



EUROPEAN COMMISSION

DIGIT
Digital Europe Programme

Access Point

Domibus 5.1.1

Plugin Cookbook

Version [6.5]

Status [Final]

© European Union, 2023

Reuse of this document is authorised provided the source is acknowledged. The Commission's reuse policy is implemented by Commission Decision 2011/833/EU of 12 December 2011 on the reuse of Commission documents.

Date: 10/10/2023

Document Approver(s):

Approver Name	Role
Bogdan DUMITRIU	eDelivery Project Officer

Document Reviewers:

Reviewer Name	Role
Caroline AEBY and Chaouki BERRAH	Technical Writers
Cosmin BACIU	Domibus Technical Leader
Ioana DRAGUSANU	eDelivery Technical Officer

Summary of Changes:

Version	Date	Created by	Short Description of Changes
0.01	21.06.2016	Christian KOCH	Initial version
0.02	14.07.2016	Christian KOCH	Changes according to comments
0.03	21.07.2016	Christian KOCH	Added link to administration guide
0.04	29.07.2016	Christian KOCH	Changes according to comments
0.05	11.08.2016	Christian KOCH	Changes according to comments
1.00	11.08.2016	Cosmin BACIU	Describe how perform the validation of the submission. First version published
1.01	15.09.2016	Cosmin BACIU	Updated the document for 3.2-RC1
1.02	04.10.2016	Ioana DRAGUSANU	Added authentication details for 3.2.0
1.03	10.10.2016	Adrien FERIAL	Finalization of the document
1.04	19.01.2017	Cosmin BACIU	Documented the new <i>messageReceiveFailed</i> method
1.05	22.03.2017	Cosmin BACIU	Upgrade the version to 3.2.3
1.06	10.04.2017	Cosmin BACIU	Upgrade the version to 3.2.4
1.07	22/05/2017	Yves ADAM	Upgrade the version to 3.2.5
1.08	20/06/2017	Ioana DRAGUSANU, Cosmin BACIU	Add 3.3-RC1 changes, ext-services, domibus-logging, getStatus API
1.09	03/10/2017	Cosmin BACIU	Documented the new <i>messageStatusChanged</i> method
2.00	05/10/2014	Caroline AEBY	Document review and corrections.
2.01	09/10/2017	CEF Support	List of reviewers updated.
2.02	24/11/2017	CEF Support	Update with Domibus 3.3.1
2.03	08/02/2018	CEF Support	Update with Domibus 3.3.2
2.04	20/03/2018	CEF Support	Reuse notice added, update with Domibus 3.3.3
2.05	16/04/2018	CEF Support	Update with Domibus 3.3.4
2.06	01/08/2018	Caroline AEBY	Updated for Domibus 4.0. Added info on notification listener. Plugin services documented.
2.07	04/09/2018	Caroline AEBY	Removed references to release candidate version
2.08	07/09/2018	Cosmin BACIU	Updated for multi-tenancy
2.09	14/09/2008	Chaouki BERRAH	Minor Update from Ioana DRAGUSANU
2.10	26/09/2018	Caroline AEBY	Contact information update
2.20	27/11/2018	Caroline AEBY	Domibus 4.0.1 update

2.3	11/02/2019	Caroline AEBY	Domibus 4.0.2 update
2.4	16/04/2019	Caroline AEBY	Domibus 4.1 updates
2.5	17/04/2019	Cosmin BACIU	Domibus 4.1 updates: added payloadSubmittedEvent & payloadProcessedEvent
2.6	07/05/2019	Cosmin BACIU	Domibus 4.1-RC1 updates
2.7	15/07/2019	Caroline AEBY	4.1-RC1 => 4.1
2.8	09/09/2019	Caroline AEBY	4.1.1 + reference to the SAD for Multitenancy
2.9	11/10/2019	Ioana Dragusanu	Domain handling in Multitenancy environment.
3.0	05/11/2019	Cosmin Baci	Password encryption documented
3.1	06/11/2019	Cosmin Baci	Notification listener information added
3.2	04/02/2020	Caroline AEBY	Domibus 4.1.3
3.3	14/04/2020	Caroline AEBY	Remark on common classloader and spring context between standard and custom plugins
3.4	27/05/2020	Ion PERPEGEL Caroline AEBY	Domibus 4.2. Section §3.10 added for Domibus 4.2
3.5	24/06/2020	Caroline AEBY Ioana Dragusanu	Domibus 4.2 Update plugin API deprecated methods
3.6	02/07/2020	Catalin Enache	Domibus 4.2 Added Section 3.8 - Ehcache documentation
3.7	28/07/2020	Cosmin BACIU	Domibus 4.2 Documented Command Service
3.8	20/08/2020	Arun Raj Venugopal	Added section 6.1.6 setting the domain MDC in logs
3.9	21/09/2020	Caroline AEBY	Domibus 4.2 RC release
4.0	18/11/2020	Caroline AEBY Cosmin BACIU	Domibus 4.2 FR - new API for plugin implementation, updated message submission and reception diagrams, deprecated API and how to migrate to the new API, plugin properties
4.1	24/02/2021	Caroline AEBY	Domibus 4.2.1 version
5.0	15/04/2021	Caroline AEBY Ion PERPEGEL	Domibus 5.0 update - Database access: DomibusJTA => DomibusEM
5.1	25/06/2021	Caroline AEBY Cosmin BACIU	Receive notifications
5.2	13/03/2022	Caroline AEBY	Domibus 5.0. RC1
5.3	30/03/2022	Cosmin BACIU Ion PERPEGEL	Domibus 5.0 updates
5.4	02/05/2022	Caroline AEBY	No more CEF references + links update – Domibus 5.0 version
5.5	30/06/2022	Chaouki BERRAH	Domibus 5.0.1 version. REST Services update
5.6	20/09/2022	Cosmin BACIU Ion PERPEGEL	Domibus 5.0.1 updates
6.0	14/10/2022	Caroline AEBY Ion PERPEGEL	Domibus 5.1 RC1 updates
6.1	25/11/2022	Caroline AEBY Ion PERPEGEL Cosmin BACIU	Domibus 5.1 RC1 updates + distributed cache documented
6.2	16/01/2023	Caroline AEBY Cosmin BACIU	Domibus 5.1 RC1 updates – updates in distributed cache
6.3	23/02/2023	Caroline AEBY Ion PERPEGEL	Enable aware interface updates
6.4	21/03/2023	Caroline AEBY	Domibus 5.1 FR

6.5	10/10/2023	Cosmin BACIU Caroline AEBY	Domibus 5.1.1 and plugin initialization section added
-----	------------	-------------------------------	---

Table of Contents

1. INTRODUCTION	6
1.1. Purpose.....	6
1.2. Users.....	6
2. BACKEND INTEGRATION	7
2.1. General Overview.....	7
2.2. Plugin Structure.....	7
2.3. Message Flow	8
3. IMPLEMENTING A PLUGIN	10
3.1. Extending AbstractBackendConnector.....	10
3.2. Implementing Message transformers.....	11
3.3. Receiving notifications	11
3.3.1. Synchronous notifications.....	12
3.3.2. Asynchronous notifications.....	12
3.4. Conditional Spring bean creation.....	14
3.5. Plugin initialization.....	14
3.6. Validation of the submission.....	15
3.7. Plugin Security	17
3.7.1. Authentication.....	17
3.7.2. Authorization.....	18
3.8. Logging	19
3.9. Caching	19
3.9.1. Local cache	19
3.9.2. Distributed cache	20
3.10. Plugin Services.....	21
3.10.1. Message acknowledgement service	21
3.10.2. Monitoring service	22
3.10.3. Command service.....	23
3.10.4. Backend-Connector-Provider-Service	24
3.11. Password encryption.....	24
3.12. Enable awareness of plugins	25
4. PLUGIN PROPERTIES	27
4.1. Property files	27
4.2. Property metadata	27

5. PLUGIN CONFIGURATION AND DEPLOYMENT	29
6. API DOCUMENTATION	30
7. MULTITENANCY	31
7.1.1. Check if Domibus runs in Multitenancy mode	31
7.1.2. Get the current domain.....	31
7.1.3. Set the current domain for an asynchronous execution	31
7.1.4. Access the database	32
7.1.5. Create a quartz job.....	35
7.1.6. Setting the domain MDC in logs.....	36
8. REMOVED API AND MIGRATING TO THE NEW API	37
9. LIST OF FIGURES	40
10. CONTACT INFORMATION	41

1. INTRODUCTION

This document describes the Domibus plugin architecture and plugin API.

1.1. Purpose

After reading this document, the reader should be aware of the capabilities provided by the Domibus plugin system. Additionally, a developer familiar with the AS4 protocol will be able to implement a plugin integrating an existing back office application into Domibus.

1.2. Users

This document is intended for the Directorate Generals and Services of the European Commission, Member States (MS) and companies of the private sector wanting to set up a connection between their backend system and the Access Point.

In particular:

- Business Architects will find it useful for determining how to best exploit the Access Point to create a fully-fledged solution.
- Analysts will find it useful to understand the Use-Cases of the Access Point.
- Architects will find it useful as a starting point for connecting a Back-Office system to the Access Point.
- Developers will find it essential as a basis of their development concerning the Access Point services.
- Testers can use this document in order to test the use cases described.

2. BACKEND INTEGRATION

2.1. General Overview

The purpose of Domibus is to facilitate B2B communication. To achieve this goal it provides a very flexible plugin model which allows the integration with nearly all back office applications.

There are three default plugins available with the Domibus distribution:

- the `domibus-default-jms-plugin`
- the `domibus-default-ws-plugin`
- the `domibus-default-fs-plugin`

Further documentation about those plugins can be found at <https://ec.europa.eu/digital-building-blocks/wikis/display/DIGITAL/Domibus> .

Important remark: Developers of custom plugins should ensure that their plugins can be deployed alongside the standard Domibus Default Plugins, given that they share a common classloader and Spring context.

2.2. Plugin Structure

A plugin is dependent on the ***domibus-plugin-api*** module which is released together with the main Domibus application. Any changes to previous API versions will be addressed in a migration guide.

In addition to this required module, another module is available (more information about this module can be found in the **Domibus Software Architecture Document**¹):

- ***domibus-logging***: may be used to maintain a uniform logging style with the Domibus core.

A plugin consists of the implementation of at least two interfaces, `eu.domibus.plugin.transformer.MessageSubmissionTransformer` and `eu.domibus.plugin.transformer.MessageRetrievalTransformer`, and the extension of one abstract class, `eu.domibus.plugin.AbstractBackendConnector`.

This way multiple plugins can share the same data formats while using different transport protocols or enforcing different security policies. It is also possible to implement transport handlers for protocols while keeping the actual data format pluggable as those classes are not necessarily coupled and can be reused independently from each other.

¹ The document can be downloaded at <https://ec.europa.eu/digital-building-blocks/wikis/display/DIGITAL/Domibus> in the documentation section.

2.3. Message Flow

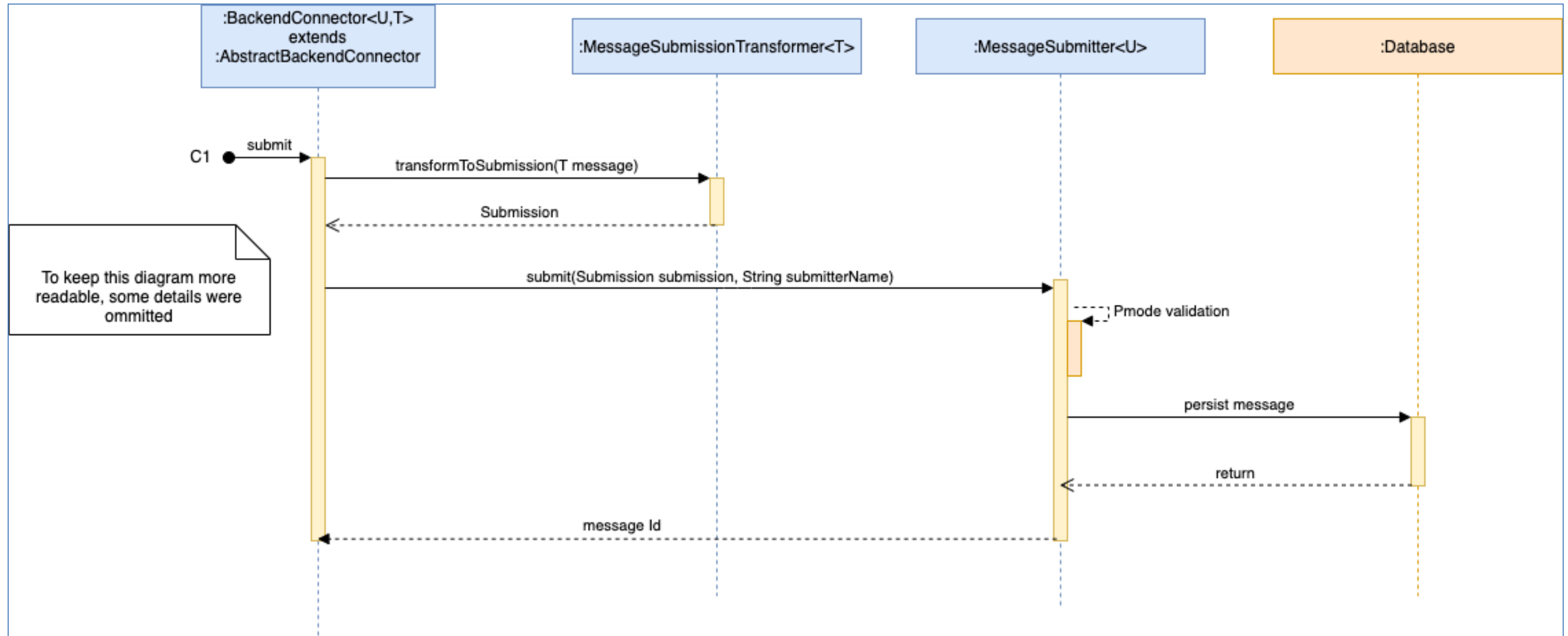


Figure 1 - Message Submission from the backend

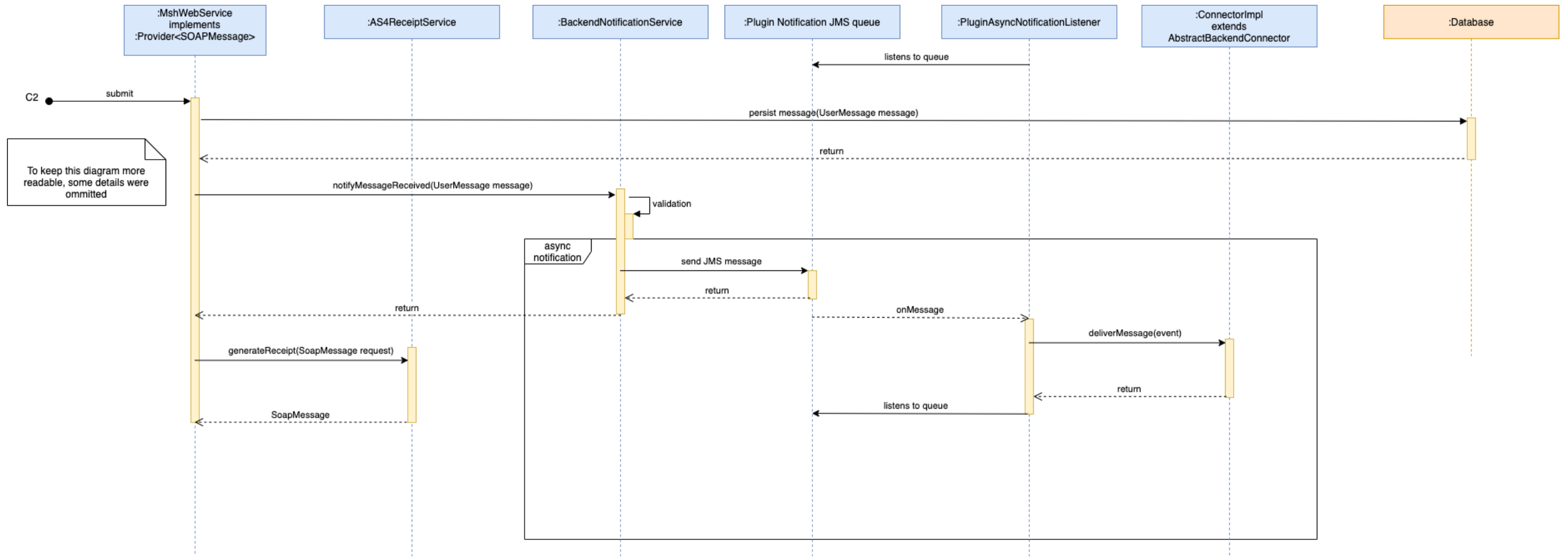


Figure 2 - Message reception by C3 from C2

3. IMPLEMENTING A PLUGIN

A Domibus plugin receives notifications for outgoing and incoming messages from Domibus via a specific API which is described in the following sections.

Once it receives a notification, a plugin has two options:

- delivers directly the notification to the backend (C1/C4)
- persists the notification (e.g. in a database), and lets the backend pull the notifications on demand.

Depending on the business case, one of the two options above will be used.

A plugin can get the status of a message on demand by calling the `eu.domibus.common.MessageStatus getStatus(java.lang.String messageId)` method. In order to get more information in case of errors, the plugin can use a dedicated method: `java.util.List<eu.domibus.common.ErrorResult> getErrorsForMessage(java.lang.String messageId)`.

3.1. Extending AbstractBackendConnector

`eu.domibus.plugin.AbstractBackendConnector` provides implementations of most methods defined in `eu.domibus.plugin.BackendConnector`. `eu.domibus.plugin.AbstractBackendConnector` should be used as basis for every plugin.

The following methods should be implemented by a plugin:

- `getMessageSubmissionTransformer()` - Implementations of this interface transform a message of a specific business type to an object of type `eu.domibus.plugin.Submission` when submitting a message to Domibus
- `getMessageRetrievalTransformer()` - Implementations of this interface transform a message of a specific business type to an object of type `eu.domibus.plugin.Submission` when received a message from Domibus
- `deliverMessage(eu.domibus.common.DeliverMessageEvent)` - Delivers the message with the associated `messageId` to the backend application
- `messageReceiveFailed(eu.domibus.common.MessageReceiveFailureEvent)` - This method gets called when an incoming message is rejected by the MSH
- `messageSendFailed(eu.domibus.common.MessageSendFailedEvent)` - This method gets called when an outgoing message associated with an associated `PMode[1].errorHandling.Report.ProcessErrorNotifyProducer=true` has finally failed to be delivered
- `messageSendSuccess(eu.domibus.common.MessageSendSuccessEvent)` - This method gets called when an outgoing message has been successfully sent to the intended receiving MSH
- `messageStatusChanged(eu.domibus.common.MessageStatusChangeEvent event)` - This method gets called when the status of a User Message changes

- *payloadSubmittedEvent* (*eu.domibus.common.PayloadSubmittedEvent*): Notifies the plugins for every payload that has been submitted to C2 but not yet saved
- *payloadProcessedEvent* (*eu.domibus.common.PayloadProcessedEvent*): Notifies the plugins for every payload that has been saved by C2
- *messageResponseSent* (*eu.domibus.common.MessageResponseSentEvent event*): Notifies the plugins on C3 just before a response message is sent back to C2

3.2. Implementing Message transformers

The implementations of the transformer classes are responsible for transformation between the native backend formats and *eu.domibus.plugin.Submission*:

eu.domibus.plugin.transformer.MessageSubmissionTransformer and
eu.domibus.plugin.transformer.MessageRetrievalTransformer

As there are two different interfaces to implement it is possible to use different DTOs for message submission and reception. This is convenient when those tasks are handled by different backend applications.

As *eu.domibus.plugin.Submission* is able to represent all kinds of messages there are many parameters that must be set, with some of them unknown to the backend application. One approach is to statically set those values in the transformer classes. Another, more flexible approach is the usage of overridable default settings as used in the bundled default JMS plugin. For further details, see the documentation and implementation of the default JMS plugin.

3.3. Receiving notifications

Domibus sends notifications to the plugins when different message events occur. Domibus notifies the plugins either synchronously, via callbacks, or asynchronously, via a JMS queue. More information about which callbacks are available can be found in *eu.domibus.plugin.BackendConnector* interface.

For example, the WS Plugin receives notifications on the *jms/domibus.notification.webservice* queue.

The notification types available are *eu.domibus.common.NotificationType*:

```
public enum NotificationType {
    MESSAGE_RECEIVED, MESSAGE_FRAGMENT_RECEIVED, MESSAGE_SEND_FAILURE,
    MESSAGE_FRAGMENT_SEND_FAILURE, MESSAGE_RECEIVED_FAILURE,
    MESSAGE_FRAGMENT_RECEIVED_FAILURE, MESSAGE_SEND_SUCCESS,
    MESSAGE_FRAGMENT_SEND_SUCCESS, MESSAGE_STATUS_CHANGE,
    MESSAGE_FRAGMENT_STATUS_CHANGE;
}
```

MESSAGE_RECEIVED – C3 receives a UserMessage from C2

MESSAGE_FRAGMENT_RECEIVED – C3 receives a UserMessage fragment from C2

MESSAGE_SEND_FAILURE - C2 fails to send a UserMessage to C3

MESSAGE_FRAGMENT_SEND_FAILURE - C2 fails to send a UserMessage fragment to C3

MESSAGE_RECEIVED_FAILURE – C3 fails to receive a UserMessage

MESSAGE_FRAGMENT_RECEIVED_FAILURE - C3 fails to receive a UserMessage

MESSAGE_SEND_SUCCESS – C2 sends successfully a UserMessage to C3

MESSAGE_FRAGMENT_SEND_SUCCESS - C2 sends successfully a UserMessage fragment to C3

MESSAGE_STATUS_CHANGE – UserMessage status changes

MESSAGE_FRAGMENT_STATUS_CHANGE – UserMessage fragment status changes

Each plugin may configure its own list of notification types for which it expects to be notified. This list is optional. By default, the plugins that use PULL mode receive notifications for **MESSAGE_RECEIVED**, **MESSAGE_SEND_FAILURE**, **MESSAGE_RECEIVED_FAILURE** while the PUSH plugins receive notifications for all notification types.

A plugin can override the default list of notifications for which it wants to be notified. This can be done by setting the list of notifications via the method `eu.domibus.plugin.AbstractBackendConnector#setRequiredNotifications`.

For example, the WS Plugin configure the list of notifications in the plugin property file and overrides its list of notifications:

```
@Bean("backendWebservice")
public WebServicePluginImpl createWSPlugin(DomibusPropertyExtService domibusPropertyExtService) {
    List<NotificationType> messageNotifications = domibusPropertyExtService.getConfiguredNotifications(WSPluginPropertyManager.MESSAGE_NOTIFICATIONS);
    Log.debug("Using the following message notifications {}", messageNotifications);
    WebServicePluginImpl webServicePlugin = new WebServicePluginImpl();
    webServicePlugin.setRequiredNotifications(messageNotifications);
    return webServicePlugin;
}
```

3.3.1. Synchronous notifications

A plugin receives notifications synchronously if no `eu.domibus.plugin.notification.PluginAsyncNotificationConfiguration` is configured for the plugin. This means that Domibus calls in the same thread the plugin notification method, for instance when a message is sent successfully it will call `eu.domibus.plugin.BackendConnector#messageSendSuccess(eu.domibus.common.MessageSendSuccessEvent)`.

While receiving a message, a plugin can throw an exception, `eu.domibus.plugin.exception.PluginMessageReceiveException`, in order to send a specific error message to the sender.

3.3.2. Asynchronous notifications

A plugin can be configured to receive notifications asynchronously from Domibus. In this mode, Domibus sends a JMS message to the plugin notification queue. The plugin JMS listener consumes JMS notification messages from the notification queue and then it will notify the plugin.

In order to receive asynchronous notifications, a plugin must create a `eu.domibus.plugin.notification.AsyncNotificationConfiguration` Spring bean. The class `eu.domibus.plugin.notification.PluginAsyncNotificationConfiguration` implements the `eu.domibus.plugin.notification.AsyncNotificationConfiguration` interface and it can be used to create the async configuration.

```

public interface AsyncNotificationConfiguration {

    /**
     * The connector which will receive async notifications via the configured JMS queue
     *
     * @return the connector
     */
    BackendConnector getBackendConnector();

    /**
     * Gets the plugin notification queue that will be used by Domibus to notify the plugin asynchronously
     *
     * @return
     */
    Queue getBackendNotificationQueue();

    /**
     * The Queue name or queue jndi name
     *
     * @return the queue name or queue jndi name
     * @throws JMSEException in case the queue name cannot be get
     */
    default String getQueueName() throws JMSEException {
        return getBackendNotificationQueue().getQueueName();
    }
}

```

The *AsyncNotificationConfiguration* must be configured with the plugin *BackendConnector* instance, the plugin JMS notification queue where Domibus will send JMS messages to notify the plugin and the JMS queue name.

For instance, please find below how the WS Plugin configures the *AsyncNotificationConfiguration* Spring bean instance for Tomcat using Java configuration:

```

@Conditional(TomcatCondition.class)
@Configuration
public class WSPluginTomcatConfiguration {

    private static final DomibusLogger LOG = DomibusLoggerFactory.getLogger(WSPluginTomcatConfiguration.class);

    @Bean("notifyBackendWebServiceQueue")
    public ActiveMQQueue notifyBackendWSQueue() {
        return new ActiveMQQueue("domibus.notification.webservice");
    }
}

```

```

@Bean("webserviceAsyncPluginConfiguration")
public PluginAsyncNotificationConfiguration pluginAsyncNotificationConfiguration(@Qualifier("notifyBackendWebServiceQueue") Queue notifyBackendWebServiceQueue,
    WebServicePluginImpl backendWebService,
    Environment environment) {
    PluginAsyncNotificationConfiguration pluginAsyncNotificationConfiguration = new PluginAsyncNotificationConfiguration(backendWebService, notifyBackendWebServiceQueue);
    if (DomibusEnvironmentUtil.INSTANCE.isApplicationServer(environment)) {
        String queueNotificationJndi = NOTIFY_BACKEND_QUEUE_JNDI;
        LOG.debug("Domibus is running inside an application server. Setting the queue name to [{}]", queueNotificationJndi);
        pluginAsyncNotificationConfiguration.setQueueName(queueNotificationJndi);
    }
    return pluginAsyncNotificationConfiguration;
}

```

3.4. Conditional Spring bean creation

Some Spring beans must be created conditionally depending on the server on which Domibus is deployed. When using Java configuration, a plugin can take advantage of the server conditions that are already existing in the Plugin API:

- `ApplicationServerCondition`: true when Domibus is deployed on WebLogic or WildFly
- `TomcatCondition`: true when Domibus is deployed on Tomcat
- `WebLogicCondition`: true when Domibus is deployed on WebLogic
- `WildFlyCondition`: true when Domibus is deployed on WildFly

For instance, the following Spring bean will be created when Domibus is deployed on Tomcat:

```
@Conditional(TomcatCondition.class)
@Configuration
public class FSPluginTomcatConfiguration
```

3.5. Plugin initialization

Plugins can execute initialization logic using a `@PostConstruct` annotation on a public method in a Spring bean. This is perfectly fine if the initialization of a Spring bean does not depend on other Spring beans. But in most of the cases, a Spring bean uses other dependencies to perform its initialization logic. Using a `@PostConstruct` annotation has several disadvantages: it can create circular dependencies because the Spring context is not yet fully initialized, and it is not easily possible to control the order of the initialization logic across multiple Spring beans.

In order to mitigate the disadvantages mentioned above, Domibus offers the possibility to the plugins to perform initialization logic after the Spring context is fully initialized. It uses the interface `PluginInitializer` which has the following methods:

- `void initializeNonSynchronized()`: Executes without any locking mechanism. In a cluster environment it is possible that this method executes in parallel on multiple nodes from the cluster.
- `void initializeWithLockIfNeeded()`: Executes with locking mechanism only in a cluster environment, in a single node it executes without locking. In a cluster environment only one node executes this method at any given time.

A plugin that wants to execute initialization logic must:

- implement the `PluginInitializer` in a Spring bean annotated with `@org.springframework.stereotype.Service`.
- return the `PluginInitializer` bean in the `eu.domibus.plugin.BackendConnector#getPluginInitializer` method of `BackendConnector` implementation

3.6. Validation of the submission

There are use cases when it is required that the Submission object is validated before it is being delivered to the plugin. For instance, the user might want to verify that one of all the payloads is valid against a custom XSD schema. In this case, it does not make sense to deliver the message to the plugin for processing if it is not valid.

In order to better understand why the current API is not sufficient for this use case we have to understand first how the Submission object is delivered to the plugin for processing.

There are two transactions involved in the Submission processing:

1. In the first transaction, the message is stored in the database and a signal is sent internally via JMS to trigger the Submission processing.
2. A JMS listener is listening to Submission processing events and triggers the processing.

If the Submission is validated in the second step it would be too late because the Submission has been already saved and accepted for processing in the first step. This is the reason why we need to perform the Submission validation in the first step. If the Submission is not valid, an exception will be raised and the processing will not be performed.

The API for Submission validation can be found in the plugin API under the package *eu.domibus.plugin.validation*.

Hereunder you can find the class diagram of the classes involved in the submission validation:

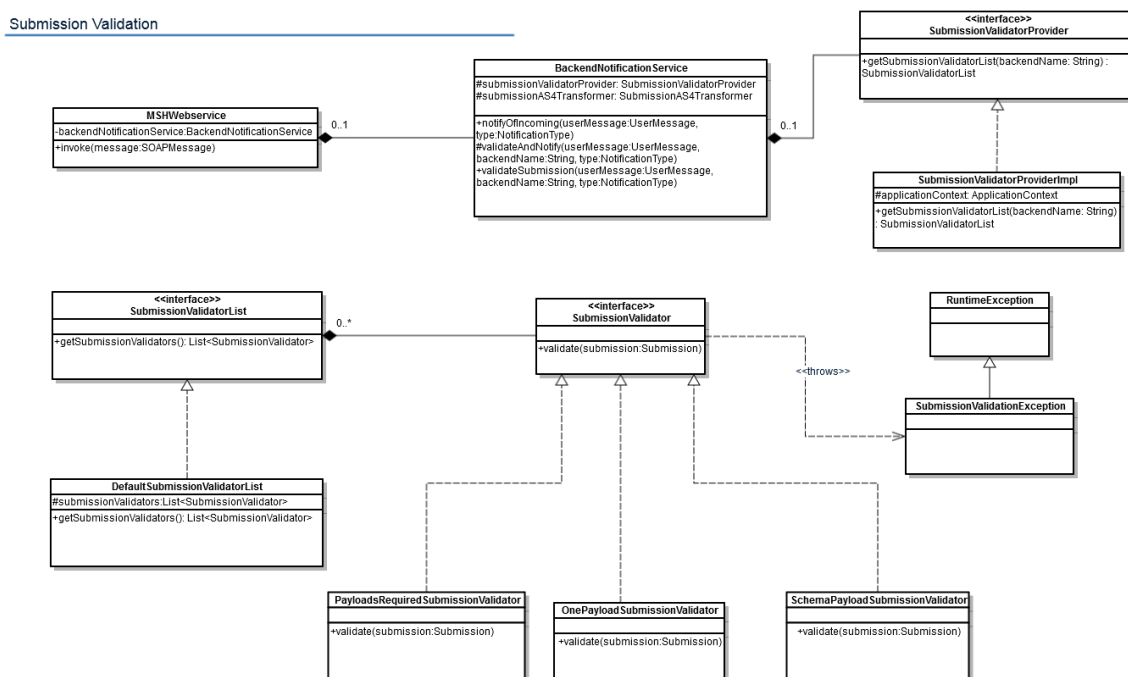


Figure 3 – Submission validation class diagram

In order to validate the Submission object, one has to declare in the plugin Spring context a bean of type *eu.domibus.plugin.validation.SubmissionValidatorList*. The bean id needs to contain the plugin name. The core will automatically discover the bean of type *SubmissionValidatorList* and perform the validation by calling the *validate* method on each configured *SubmissionValidator*.

In the plugin API there is already a default implementation of the *SubmissionValidatorList* interface *DefaultSubmissionValidatorList* that has an *java.util.ArrayList* for maintaining the list of validators.

By default Domibus comes with 3 implementations of the *SubmissionValidator* interface. An example how to use them can be found in the next paragraph.

1. *eu.domibus.submission.validation.OnePayloadSubmissionValidator* – validates that there is at least one payload present in the Submission
2. *eu.domibus.submission.validation.PayloadsRequiredSubmissionValidator* – validates that there is only one payload present in the Submission
3. *eu.domibus.submission.validation.SchemaPayloadSubmissionValidator* – validates that the payloads are valid against a custom XSD schema

Below is an extract of a custom plugin Spring context where we can see that a custom validator has been implemented and there are 3 validators used to validate the Submission:

```
<!-- custom validator -->
<bean id="customValidator"
class="eu.domibus.submission.validation.CustomSubmissionValidator"/>

<bean id="customJaxbContext" class="javax.xml.bind.JAXBContext" factory-
method="newInstance">
  <constructor-arg type="java.lang.String"
value="eu.domibus.plugin.custom.domain"/>
</bean>
<!-- schema validator -->
<bean id="customPayloadSchemaValidator"
class="eu.domibus.submission.validation.SchemaPayloadSubmissionValidator">
  <property name="jaxbContext" ref="customJaxbContext"/>
  <property name="schema" value="classpath:xsd/as4Payload.xsd"/>
</bean>

<!-- validators list -->
<bean id="customSubmissionValidatorList"
class="eu.domibus.plugin.validation.DefaultSubmissionValidatorList">
  <property name="submissionValidators">
    <list>
      <ref bean="onePayloadSubmissionValidator"/>
      <ref bean="customValidator"/>
      <ref bean="customPayloadSchemaValidator"/>
    </list>
  </property>
</bean>
```


3.7. Plugin Security

By default, the plugins security is disabled. Domibus can be configured to require authorization by setting the following property to **false** in the *domibus.properties* configuration file:

```
domibus.auth.unsecureLoginAllowed=false
```

Once the plugins security is activated, all the methods of the *eu.domibus.plugin.AbstractBackendConnector* class can only be called by authenticated users.

3.7.1. Authentication

The service **eu.domibus.ext.services.AuthenticationExtService** provided in the plugin API can be used by the plugins to authenticate the request.

It provides to the plugins two Java methods to authenticate:

1. *authenticate (HttpServletRequest httpRequest) throws AuthenticationExtException*

This method supports the following authentication types:

- Basic Authentication
- X509Certificates Authentication
- Blue Coat Authentication

Note: Blue Coat is the name of the reverse proxy at the EC. It forwards the request in HTTP with the certificate details inside the request ("Client-Cert" header key).

The *authenticate* method evaluates the three supported authentication methods in the following order: Basic Authentication, X509Certificates, Blue Coat certificates. The first authentication method found will execute, and the remaining authentication methods will not be evaluated anymore.

2. *basicAuthenticate (String username, String password) throws AuthenticationExtException;*

This method supports only basic authentication.

All the users configured in the **Plugin User** UI page can authenticate and call any operation of the *eu.domibus.plugin.AbstractBackendConnector*.

By default, there are two plugin users defined:

- "admin" has the role `ROLE_ADMIN`
- "user" has the role `ROLE_USER`, configured with Original User `"urn:oasis:names:tc:ebcore:partyid-type:unregistered:C1"`

Custom plugins may use their own custom authentication providers and perform different types of authentications. In case of custom authentication, the Spring **SecurityContextHolder** has to set correctly the **authentication** parameter after a successful authentication:

```
SecurityContextHolder.getContext().setAuthentication(authentication)
```

It is mandatory that the method *getPrincipal()* of the authentication parameter set above returns the original user value associated to the authenticated user. This original user value is used to authorize the user to a specific message. More information on how it is implemented can be found in §3.7.2 Authorization.

3.7.2. Authorization

The authorization for the method defined in *eu.domibus.plugin.AbstractBackendConnector* is performed at Java method level using Spring **@PreAuthorize** annotation.

```
@PreAuthorize("hasAnyRole('ROLE_USER', 'ROLE_ADMIN')")
public void hasUserOrAdminRole() {}

@PreAuthorize("hasAnyRole('ROLE_ADMIN')")
public void hasAdminRole() {}
```

There are three roles defined for the plugin users **ROLE_AP_ADMIN**, **ROLE_ADMIN** and **ROLE_USER**, described below.

A user with role **ROLE_AP_ADMIN** or **ROLE_ADMIN** has the right to call the following methods of *eu.domibus.plugin.AbstractBackendConnector*:

- o **submit**
- o **downloadMessage**
- o **listPendingMessages**
- o **getStatus**
- o **getMessageErrors**

A user with role **ROLE_USER** associated to an Original User has the right to call the following methods of *eu.domibus.plugin.AbstractBackendConnector*:

- o **submit** when the value of the **originalSender** from the submitted message is equal to the Original User of the authenticated user
- o **downloadMessage**, only if the **finalRecipient** value from the message to be downloaded is equal the Original User of the authenticated user
- o **listPendingMessages**, pending messages for which the **finalRecipient** value is equal to the Original User of the authenticated user
- o **getStatus** and **getMessageErrors** when the value of the **originalSender** or **finalRecipient** of the message is equal to the Original User of the authenticated user.

3.8. Logging

The logging service is provided in the **domibus-logging** module, which is released together with the main Domibus application. More information about **domibus-logging** module can be found in the Domibus Software Architecture Document (SAD) (the document is available on <https://ec.europa.eu/digital-building-blocks/wikis/display/DIGITAL/Domibus> in the documentation section).

Example of use:

```
private static final DomibusLogger LOG =  
DomibusLoggerFactory.getLogger(BackendWebServiceImpl.class);
```

3.9. Caching

Domibus has two types of caching mechanisms available: local and distributed.

The local cache is available when Domibus is deployed in a single instance and also in a cluster. The local cache must be used when you do not want to replicate the cache amongst the cluster deployment.

The distributed cache is only available in a cluster deployment. It should be used when you want to replicate the cache amongst the cluster members.

3.9.1. Local cache

Domibus uses Ehcache implementation for local caching using @Cacheable annotations or programmatically.

At plugin level it is possible to add two configuration files for Ehcache, to define their own cache names. However, please note that the caches will be merged to Domibus Ehcache manager.

3.9.1.1. Default Ehcache file (classpath file)

- The expected format is *-plugin-default-ehcache.xml e.g ws-plugin-default-ehcache.xml
- The expected location (in a Java project) is: /src/main/resources/config/ehcache/*-plugin-default-ehcache.xml which will go to .jar file of the plugin into e.g. /config/ehcache/ws-plugin-default-ehcache.xml location
- The cache names defined in this file should be prefixed with the plugin name to avoid collision with Domibus cache names. Otherwise, Domibus will throw an exception and will not deploy:

```
<ehcache>  
  <cache name="wsplugin.policyCache"  
    maxBytesLocalHeap="5m"  
    timeToLiveSeconds="3600"  
    overflowToDisk="false">  
  </cache>  
</ehcache>
```

3.9.1.2. External cache

- The expected format is *-plugin-ehcache.xml e.g ws-plugin-ehcache.xml
- The expected location is: \${domibus.config.location}/plugins/config
- The cache names defined here could override the one defined in the classpath file (see above), they must not override/collide with Domibus cache names

```
<ehcache>
  <cache name="wsplugin.policyCache"
    maxBytesLocalHeap="5m"
    timeToLiveSeconds="360"
    overflowToDisk="false">
  </cache>
  <cache name="wsplugin.crlByCert"
    maxBytesLocalHeap="5m"
    timeToLiveSeconds="3600"
    overflowToDisk="false">
  </cache>
</ehcache>
```

In the above file, wsplugin.policycache overrides the one defined in the classpath file.

The following algorithms will be used:

- Domibus parses default-ehcache.xml (classpath) and config/internal/ehcache.xml (which may override the caches declared in the first file).
- Domibus parses all plugin default files from classpath (.jar) - default-ehcache.xml and all caches to a plugin cache manager (in memory).
- Domibus parses all plugin non default files - from /plugins/config folders - the caches are added to the same plugins manager, and they may override the caches defined at step B.
- Domibus merges the plugins cache manager (step B+C) to the Domibus cache manager (step A). If there is a plugin cache which is overriding a Domibus cache -> a DomibusCoreException is thrown and the deployment is stopped

3.9.2. Distributed cache

The distributed cache is only available in a cluster deployment. In a non-cluster deployment, the distributed cache defaults to the local cache.

In a cluster deployment, once you add an entry in a distributed cache, the change is replicated automatically amongst the cluster members.

The distributed cache is accessible via Java API and via REST.

A custom plugin can have access to the distributed cache via the *eu.domibus.ext.services.DistributedCacheExtService* Java class.

You can find below the methods available:

- *void createCache(String cacheName)*: creates or gets a distributed cache with the specified name. If the cache does not exist, it will be created with the default values and near cache configuration specified in domibus-default.properties
- *void createCache(String cacheName, int cacheSize, int timeToLiveSeconds, int maxIdleSeconds)*: creates or gets a distributed cache with the specified name and configuration. If the cache does not exist, it will be created with the specified configuration and near cache configuration specified in domibus-default.properties
- *void createCache(String cacheName, int cacheSize, int timeToLiveSeconds, int maxIdleSeconds, int nearCacheSize, int nearCacheTimeToLiveSeconds, int nearCacheMaxIdleSeconds)*: creates or gets a distributed cache with the specified name and configuration.
- *void addEntryInCache(String cacheName, String key, Object value) throws CacheExtServiceException*: adds an entry in the cache
- *Object getEntryFromCache(String cacheName, String key) throws CacheExtServiceException*: gets an entry from the cache
- *void evictEntryFromCache(String cacheName, String key) throws CacheExtServiceException*: evicts an entry from the cache

For more details about the distributed caching, please check Domibus Software Architecture document and the Domibus Administration Guide.

3.10. Plugin Services

The Plugin API offers several services like monitoring or message acknowledgment, which are described below.

These services can be accessed in two ways:

- Java API

It can be used by the plugin implementers of the custom plugins.

- REST interface

The REST interface can be used directly by the C1/C4 backends if the network configuration allows it.

The documentation of the REST interface can be found on the [Digital site](#).

3.10.1. Message acknowledgement service

This service is used to acknowledge when a message is:

- delivered from C3 to the backend

- processed by the backend

Here are the typical use cases for using the *MessageAcknowledgementService*:

- a message is received by C3 from C2: the plugin that handles the message registers an acknowledgment before delivering the message to the backend
- a message is processed by the backend and it informs C3 via the plugin; the plugin registers an acknowledgment that the message has been processed by the backend
- a message is processed by the backend and informs C3 directly via the REST service exposed by the core; a REST service is exposed containing the same signature as {@link MessageAcknowledgeService}

There are two ways of performing message acknowledgments between C3 and the backend:

- synchronous

C3 (via the plugin) notifies the backend synchronously and the backend process the messages also synchronously. In this case, there is no need for the backend to send a separate message acknowledgement so the plugin at the C3 side registers the processing of the message by the backend.

```
Eg:  
BackendResponse backendResponse = plugin.callBackendWS(message)  
messageAcknowledgeService.acknowledgeMessageDelivered(message.getId(), new  
Timestamp(System.currentTimeMillis()))  
messageAcknowledgeService.acknowledgeMessageProcessed(message.getId(), new  
Timestamp(System.currentTimeMillis()))
```

- asynchronous

C3 notifies the backend synchronously and the backend process the messages asynchronously. In this case, the backend will send a separate message acknowledgement when it manages to process the message successfully.

```
Eg:  
plugin.sendMessageToTheBackend(message)  
messageAcknowledgeService.acknowledgeMessageDelivered(message.getId(), new  
Timestamp(System.currentTimeMillis()))
```

3.10.2. Monitoring service

This service is used to monitor failed messages and to restore them if necessary.

Assuming that "failed message" means failed to be sent by the sender access point and getting the status set to SEND_FAILURE, the service gives the possibility to:

- list all the failed messages

- restore a failed message
- restore all messages failed during a specific period
- know how long time a message has been failed
- get the history of all delivery attempts
- delete the message payload of a failed message

3.10.3. *Command service*

This service is used to execute commands in a cluster.

A plugin can execute a cluster command using the following steps:

1. Implement the command logic in a Spring service bean which implements the interface `eu.domibus.ext.services.CommandExtTask`. The command task must use a unique command name and must indicate that it can handle the command in the `canHandle` method.

Eg:

```
@Service
public class CustomCommandTask implements CommandExtTask {

    public static final String COMMAND_NAME = "mycommand";

    @Override
    public boolean canHandle(String command) {
        return COMMAND_NAME.equals(command);
    }

    @Override
    public void execute(Map<String, String> properties) {
        //custom logic
    }
}
```

2. Trigger the execution of the command using the method `eu.domibus.ext.services.CommandExtService#executeCommand(String commandName, Map<String, Object> properties)`. The command name is the name of the command defined at the above point 1. Custom parameters can be passed to the command using the properties parameter.

3.10.4. [Backend-Connector-Provider-Service](#)

This service is used to check and validate the backend providers configuration in relation to the enabled state, meaning that Domibus requires at least one plugin to be enabled on each domain.

- To trigger the validation of the enable state configuration on a domain:

```
void validateConfiguration(final String domainCode)
```

The method throws a ConfigurationException exception if there is no enabled plugin on this domain.

- To verify if the plugin with the specified name can be disabled on the specified domain:

```
boolean canDisableBackendConnector(String backendName, final String domainCode)
```

- The specified plugin notifies Domibus that it wants to be enabled on the specified domain. This is necessary because Domibus manages message queues and CRON trigger jobs for a plugin and this method creates these resources for the specified domain:

```
void backendConnectorEnabled(String backendName, String domainCode)
```

- The specified plugin notifies Domibus that it wants to be disabled on the specified domain. This is necessary because Domibus manages message queues and CRON trigger jobs for a plugin and this method deletes these resources for the specified domain. Validation is performed before:

```
backendConnectorDisabled(String backendName, String domainCode)
```

3.11. Password encryption

Passwords configured in the plugin configuration files are stored by default in clear text.

Domibus gives the possibility to the plugins to encrypt passwords configured in the plugin configuration file using symmetric encryption with AES/GCM/NoPadding algorithm.

The *eu.domibus.plugin.encryption.PluginPropertyEncryptionListenerinterface* interface should be implemented by users who need to encrypt their own passwords. The plugin passwords can be configured in property files or in other sources, like a database.

If password encryption is active (*domibus.password.encryption.active=true*), Domibus will generate the secret keys that are used to encrypt the passwords. Domibus will notify afterwards via the *PluginPropertyEncryptionListenerinterface* interface the subscribed plugin listeners to encrypt their own passwords. Custom plugins can use the password encryption services, *eu.domibus.ext.services.PasswordEncryptionExtService*, to handle the password encryption.

The password encryption has already been implemented in the Default File System Plugin, which can serve as an example on how to implement password encryption in your own custom plugin.

For instance, the property *fsplugin.authentication.password=test123* will be encrypted to *fsplugin.authentication.password=ENC(4DTXnc9zUuYqBOP/q7RtRHpG9VJLs3E=)*.

At the API level, the password properties are decrypted automatically at runtime by the `eu.domibus.ext.services.DomibusPropertyExtService` service when they are retrieved, so there are no additional actions that must be performed by a plugin.

3.12. Enable awareness of plugins

The interface called `EnableAware` can be implemented for the plugins, to signal that they can be enabled or disabled (this can be done per domain in Multitenancy environments).

For convenience, `AbstractBackendConnector` already implements this interface.

boolean isEnabled(final String domainCode)

The default implementation returns true for backward compatibility. There is a protected method in `AbstractBackendConnector` called `doIsEnabled` that checks the value of the property that specifies if a domain is enabled. For that, it asks the plugin implementation to provide the property manager and the property name by calling the 2 methods below:

DomibusPropertyManagerExt getPropertyManager()

String getDomainEnabledPropertyName()

If a property manager is not specified by the implementing plugin, the domibus property provider is used instead. A plugin implementor can call this method when overriding the `isEnabled`. The default plugins do exactly this.

void setEnabled(final String domainCode, final boolean enabled)

The default implementation does nothing, for backward compatibility. There is a protected method in `AbstractBackendConnector` called `doSetEnabled` that checks if the enabled property value has already the required value. If it does not have it, it sets the property value to the required value. The default property change listener for this property is called `DefaultEnabledChangeListener`. It calls one of the following methods, depending on the requested value:

void backendConnectorEnabled(String backendName, String domainCode)

void backendConnectorDisabled(String backendName, String domainCode)

These methods are described in [§3.10.4](#).

String getName()

It provides the name of the plugin.

boolean shouldCoreManageResources()

The default implementation returns false for backward compatibility. The default plugins return true. This means that Domibus will create and destroy some resources (like message listener containers and CRON triggers) when a plugin is enabled or disabled on a domain.

PluginMessageListenerContainer getMessageListenerContainerFactory()

The default implementation returns null, for backward compatibility. The custom implementation should return the plugin's service that manages the plugin message listener containers factory. It will be used by Domibus to create and destroy them on behalf of the plugin.

At startup, Domibus ensures that at least one plugin is enabled per domain. When Domibus loads the plugins at startup, if all plugins are disabled, it will enable one plugin.

4. PLUGIN PROPERTIES

A plugin will need at some point to define its own set of properties, apart from the Domibus properties. Typically the plugin properties are configured in a property file, for instance `ws-plugin.properties`.

Domibus gives the possibility to the plugins to use integrated property management. The plugin must first define its properties into the plugin property file and then it must create properties metadata, property metadata manager and property manager to manage how and where these properties are retrieved and set.

4.1. Property files

A plugin can configure properties in two locations: in the classpath or on the file system.

Domibus introspects the classpath for files under `config` location which end in **-plugin-default.properties**. When using Maven, the plugin can configure the default property file under `src/main/resources/config`. Once a default property file is found, Domibus adds all the properties in the central `org.springframework.context.support.PropertySourcesPlaceholderConfigurer`. A plugin **must not** configure another `PropertySourcesPlaceholderConfigurer`, neither via Java configuration nor XML configuration (`context:property-placeholder`).

A plugin can configure also an external property file located under `${domibus.config.location}/plugins/config`. The properties from the external property file override the default properties defined in the classpath.

4.2. Property metadata

In order to integrate into the property management, one needs to create a property manager. This can be achieved by creating a class that implements the `DomibusPropertyManagerExt` interface or by extending the abstract class `DomibusPropertyExtServiceDelegateAbstract`. If the properties are intended to be managed using its own property bag then one should implement directly the interface. If the properties are to be stored in the Domibus property bag then one should extend the abstract class.

In case of extending the abstract class (like default Jms plugin does), one should implement only the

```
public abstract Map<String, DomibusPropertyMetadataDTO> getKnownProperties();
```

method, and provide the map of properties metadata.

`DomibusPropertyMetadataDTO` class is used to store the attributes of a property.

The most important attributes are:

- *name*- the name of the property, the same as the one stored in the file with the value.
- *type*- NUMERIC/BOOLEAN/CONCURRENCY/EMAIL/CRON/STRING- used for validation when changing them at runtime.

- *writable*- specifies if the property can be changed at runtime.
- *usage*- can be GLOBAL , DOMAIN or SUPER or a combination of them, as described in SAD document (Domibus Software Architecture (SAD) document can be downloaded at <https://ec.europa.eu/digital-building-blocks/wikis/display/DIGITAL/Domibus> in the documentation section).
- *withFallback* – falls back to the global value for the domain property.
- *storedGlobally* – must be false if the plugin manages its value or true if domibus property provider does it.

In case the plugin manages the properties internally, one must implement all the methods of the *DomibusPropertyManagerExt* interface. Besides providing the map of property metadata as described above, one should also implement the get and set methods to store and retrieve the property value from the bag. In this case, the *storedGlobally* attribute must be set to false.

If a property is marked as writable, it must be possible to change it at runtime and it will appear in the admin console properties page (and users will be able to change it), so the set methods need to be implemented accordingly. If some custom code needs to be executed while changing it, one should create a class that implements the *PluginPropertyChangeListener* interface, and the method *public boolean handlesProperty(String propertyName)* must return true if the *propertyName* parameter is equal to the property name for which the custom code must be executed.

If a property has domain usage, the property manager needs to manage a different value for each domain. In this case, the methods

```
String getKnownPropertyValue(String propertyName);
```

```
void setKnownPropertyValue(String propertyName, String propertyValue);
```

need to get and set the value for the current domain of the Domibus.

5. PLUGIN CONFIGURATION AND DEPLOYMENT

The documentation for configuration of the message routing and plugin deployment for all supported deployment platforms can be found in the administration guide. It can be downloaded from the release page of Domibus, section Documentation: <https://ec.europa.eu/digital-building-blocks/wikis/display/DIGITAL/Domibus>

6. API DOCUMENTATION

Domibus scans automatically the classpath inside plugin jar:

- The expected format is *-domibusServlet.xml e.g config/ws-plugin-domibusServlet.xml
- The expected location (in a Java project) is: /src/main/resources/config/*-domibusServlet.xml which will go to .jar file of the plugin into e.g. /config/ws-plugin--domibusServlet.xml location
- This file should contains the package name used for all the REST API (ex: **com.custom.plugin.rest**):

```
<beans xmlns="http://www.springframework.org/schema/beans"
  xmlns:context="http://www.springframework.org/schema/context"
  xmlns:xsi="http://www.w3.org/2001/XMLSchema-instance"
  xsi:schemaLocation="
http://www.springframework.org/schema/beans
http://www.springframework.org/schema/beans/spring-beans-3.0.xsd
http://www.springframework.org/schema/context
http://www.springframework.org/schema/context/spring-context-3.0.xsd">

<context:component-scan base-package="com.custom.plugin.rest" />

</beans>
```

Example of a simple Rest API:

```
package com.custom.plugin.rest;

@RestController
@RequestMapping(value = "/custom/plugin")
public class CustomPluginConfiguration {
    @GetMapping(path = "/exemple")
    public ResponseEntity<String> get() {
        return ResponseEntity.ok("rest service triggered");
    }
}
```

This API will be called with the path: <http://{{url}}:{{port}}/domibus/custom/plugin/exemple>

Remark: Standard Javadoc documentation for the API can be downloaded from: <https://ec.europa.eu/digital-building-blocks/wikis/display/DIGITAL/Domibus+releases>.

7. MULTITENANCY

To understand how Multitenancy works in Domibus, please refer to [Domibus Software Architecture Document \(SAD\)](#), chapter “Multitenancy” and especially in the section “Plugins”.

After reading the SAD, the following aspects should be clear in a multitenant environment:

- Authentication is always required to submit a message (C1 to C2),
- Every plugin user is associated to one and only one domain,
- Every domain has its own schema in the database,
- A general schema exists to match users to domains,
- Default plugins already work in multitenant environment; they can be used as examples.

Any custom plugin should work in a Domibus multitenant environment.

Domibus Plugin API offers the possibility to handle the domains and access the database schema specific to each domain. Examples of domain handling using the Domibus plugin API are presented below.

7.1.1. [Check if Domibus runs in Multitenancy mode](#)

```
@Autowired
protected DomibusConfigurationExtService domibusConfigurationExtService;
boolean isMultiTenantAware = domibusConfigurationExtService.isMultiTenantAware();
```

7.1.2. [Get the current domain](#)

```
@Autowired
private DomainContextExtService domainContextExtService;
DomainDTO domainDTO = domainContextExtService.getCurrentDomainSafely();
```

7.1.3. [Set the current domain for an asynchronous execution](#)

When the plugin uses asynchronous execution, the domain code is required to be configured manually.

Let's take the scenario where a message is put in a JMS queue and a worker picks it up and sends it.

Along with the message, the domain code must be added in the JMS message. The consumer should first get the domain based on the domain code, set it as current domain, and afterwards execute the job.

Finally, the plugin is responsible to clear the current domain.

Get the domain:

```
@Autowired
protected DomainExtService domainExtService;

final DomainDTO = domainExtService.getDomain(domainCode)
```

Set current domain, execute job and clear domain:

```
@Autowired
protected DomainContextExtService domainContextExtService;

try {
    domainContextExtService.setCurrentDomain(currentDomain);

    // ... executeJob

} finally {
    domainContextExtService.clearCurrentDomain();
}
```

7.1.4. [Access the database](#)

Every domain has its own schema in the database. In case the plugin needs a new table to persist plugin specific data, it is recommended to keep the same segregation as the Domibus core and add a new table in the database schema of each domain.

The recommended naming convention is **<plugin_name>_TB_<name>** for tables storing plugin data and **<plugin_name>_QRTZ_<name>** for quartz tables.

See section §7.1.5 to see how to create a quartz job.

Below example shows how to save message info in a new table:

- a) Create the tables in the database (to be performed by the database admin)

Table: WS_PLUGIN_TB_MESSAGE

- ID_PK - primary key (auto increment)
- DESCRIPTION

- b) Create the entity class:

```
import javax.persistence.*;

@Entity
```



```

@Table(name = "WS_PLUGIN_TB_MESSAGE")
public class MessageInfoEntity {

    @Id
    @Column(name = "ID_PK")
    private long entityId;

    @Column(name = "DESCRIPTION")
    private String description;

    /**
     * @return the primary key of the entity
     */
    public long getEntityId() {
        return this.entityId;
    }

    public void setEntityId(long entityId) {
        this.entityId = entityId;
    }

    public MessageInfoEntity(final String description){
        this.description = description;
    }

    public String getDescription() {
        return description;
    }

    public void setDescription(String description) {
        this.description = description;
    }
}

```

- c) Create a basic DAO implementation providing the standard CRUD operations. The class reuses the Domibus EntityManager.

```

public abstract class BasicDao<T> {

    protected final Class<T> typeOfT;

    @PersistenceContext(unitName = "domibusEM")
    protected EntityManager em;

    /**
     * @param typeOfT The entity class this DAO provides access to
     */
    public BasicDao(final Class<T> typeOfT) {
        this.typeOfT = typeOfT;
    }
}

```

```
public <T> T findById(Class<T> typeOfT, String id) {
    return em.find(typeOfT, id);
}

@Transactional(propagation = Propagation.REQUIRED)
public void create(final T entity) {
    em.persist(entity);
}

@Transactional(propagation = Propagation.MANDATORY)
public void delete(final T entity) {
    em.remove(em.merge(entity));
}

public T read(final long id) {
    return em.find(this.typeOfT, id);
}

@Transactional(propagation = Propagation.MANDATORY)
public void updateAll(final Collection<T> update) {
    for (final T t : update) {
        this.update(t);
    }
}

@Transactional(propagation = Propagation.MANDATORY)
public void deleteAll(final Collection<T> delete) {
    for (final T t : delete) {
        this.delete(t);
    }
}

@Transactional(propagation = Propagation.MANDATORY)
public void update(final T entity) {
    em.merge(entity);
}

public void flush() {
    em.flush();
}
}
```

Note that the EntityManager is already configured in Domibus core to be multitenant aware and persist the data in the right table, of the current domain.

- d) Create the MessageInfoDao class, that extends the BasicDao:

```
@Repository
public class MessageInfoDao extends BasicDao<MessageInfoEntity> {

    public MessageInfoDao() {
        super(MessageInfoEntity.class);
    }
}
```

- e) Save the message info:

```
@Autowired
MessageInfoDao messageInfoDao;

String description = "New message messageId = " + messageInfo.getMessageId();
messageInfoDao.create(new MessageInfoEntity(description));
```

7.1.5. [Create a quartz job](#)

To create a new Quartz job that executes plugin specific tasks, it is recommended to extend the abstract class DomibusQuartzJobExtBean and override the method `executeJob()` with the specific actions. By doing this, the domain configuration is handled internally by Domibus.

```
@DisallowConcurrentExecution // Only one Worker runs at any time on the same node
public class MyPluginWorker extends DomibusQuartzJobExtBean {

    @Override
    protected void executeJob(JobExecutionContext context, DomainDTO domain) {
        //do plugin specific tasks
    }
}
```

Create the quartz job:

```
<bean id="myPluginWorkerJob"
    class="org.springframework.scheduling.quartz.JobDetailFactoryBean">
    <property name="jobClass" value="eu.domibus.plugin.worker. MyPluginWorker "/>
    <property name="durability" value="true"/>
</bean>
```

Create the Quartz job trigger:

```
<bean id="MyPluginWorkerTrigger"
  class="org.springframework.scheduling.quartz.CronTriggerFactoryBean"
  scope="prototype">
  <property name="jobDetail" ref=" myPluginWorkerJob "/>
  <property name="cronExpression" value=" 0 0/1 * * * ?"/>
  <property name="startDelay" value="20000"/>
</bean>
```

The default FileSystem plugin provides examples of how to create new Quartz jobs to purge sent, received and failed files that were archived.

7.1.6. [Setting the domain MDC in logs](#)

Refer section **Logging** in the Domibus Administration guide for details on configuring logging in Domibus (the document can be downloaded at <https://ec.europa.eu/digital-building-blocks/wikis/display/DIGITAL/Domibus> in the documentation section).

In multi-tenant scenarios, the domain name is logged in an MDC (Mapped Diagnostic Context) field represented in the logback configuration by [%X{d_domain}]. DomibusLogger class should be used for this purpose. Within the plugins, domain MDC can be set in the logs using the following code:

```
import eu.domibus.logging.DomibusLogger;
import eu.domibus.logging.DomibusLoggerFactory;
import static eu.domibus.logging.DomibusLogger.MDC_DOMAIN;
...
private static final DomibusLogger LOG = DomibusLoggerFactory.getLogger(....class);
...
LOG.putMDC(MDC_DOMAIN, domain.getCode());
```

8. REMOVED API AND MIGRATING TO THE NEW API

From the Domibus 5.0 major version on, several deprecated classes and methods from the Plugin API have been removed.

In this chapter we will provide more details about the removed deprecated Plugin API and how to use the new API.

The following classes and methods have been removed:

- *eu.domibus.plugin.NotificationListener* interface

The *NotificationListener* interface was used by a plugin to receive async notifications. It has been replaced by *eu.domibus.plugin.notification.AsyncNotificationConfiguration* which is documented in §3.3.2 Asynchronous notifications.

Please find below the list of removed methods of the *NotificationListener* interface and which methods are replacing them:

Removed method	New method
String getBackendName()	BackendConnector#getName()
BackendConnector.Mode getMode()	Removed
List<NotificationType> getRequiredNotificationTypeList()	BackendConnector#getRequiredNotifications()
void deleteMessageCallback(String messageId)	BackendConnector#messageDeletedEvent(MessageDeletedEvent)
void notify(final String messageId, final NotificationType notificationType, final Map<String, Object> properties)	Domibus notifies the connector using the lifecycle methods, e.g. messageSendSuccess, messageSendFailed, etc defined in eu.domibus.plugin.BackendConnector

- *eu.domibus.plugin.NotificationListenerService* class has been replaced by *eu.domibus.plugin.notification.PluginAsyncNotificationConfiguration*.
- The class *NotificationListenerService* was implementing *eu.domibus.plugin.NotificationListener* and *eu.domibus.plugin.MessageListener*. We have explained above how to migrate *eu.domibus.plugin.NotificationListener*.

- From the Domibus 5.0 major version on, the concept of plugin mode Mode.PUSH and Mode.PULL has been removed. All Domibus plugins are notified for various lifecycle events, and it is the responsibility of each plugin to determine how to consume the notification. For instance, a plugin can persist the notification received from Domibus and let the backend application pull the notifications from the plugin.
- *eu.domibus.submission.WeblogicNotificationListenerService* class: use *PluginAsyncNotificationConfiguration* and set the JNDI name as the queue name
- the methods from *eu.domibus.plugin.BackendConnector*
 - *deliverMessage(java.lang.String)* replaced by *deliverMessage(eu.domibus.common.DeliverMessageEvent)*
 - *messageSendSuccess(java.lang.String)* replaced by *messageSendSuccess(eu.domibus.common.MessageSendSuccessEvent)*
 - *messageSendFailed(java.lang.String)* replaced by *messageSendFailed(eu.domibus.common.MessageSendFailedEvent)*
 - *eu.domibus.plugin.BackendConnector#getMode* has been removed
- the methods from *eu.domibus.ext.services.DomibusPropertyManagerExt* class:
 - *getKnownPropertyValue(java.lang.String, java.lang.String)* replaced by *getKnownPropertyValue(java.lang.String)*
 - *setKnownPropertyValue(java.lang.String, java.lang.String, java.lang.String)* replaced by *setKnownPropertyValue(java.lang.String, java.lang.String)*
- the method from *eu.domibus.ext.services.PModeExtService*
 - *updatePModeFile(byte[], java.lang.String)* was replaced by *updatePModeFile(org.springframework.web.multipart.MultipartFile, java.lang.String)*

Below is an example with an old plugin configuration and the explanation on how to migrate to the new plugin configuration. WS Plugin is used in this example.

Old configuration:

```
<amq:queue id="notifyBackendWebServiceQueue"
           physicalName="domibus.notification.webservice"/>

<bean id="backendWebservice"
      class="eu.domibus.plugin.webService.impl.BackendWebServiceImpl">
  <constructor-arg value="backendWebservice"/>
</bean>

<bean id="webserviceNotificationListenerService"
      class="eu.domibus.plugin.NotificationListenerService"
      c:queue-ref="notifyBackendWebServiceQueue" c:mode="PULL"
      p:backendConnector-ref="backendWebservice"/>
```

New configuration:

```
<bean id="backendWebservice"
```

```
        class="eu.domibus.plugin.webService.impl.WebServicePluginImpl">
        <constructor-arg value="backendWebservice"/>
    </bean>

    <bean id="webserviceNotificationListenerService"
class="eu.domibus.plugin.notification.PluginAsyncNotificationConfiguration"
        c:queue-ref="notifyBackendWebServiceQueue"
        c:backendConnector-ref="backendWebservice"/>
```

9. LIST OF FIGURES

Figure 1 - Message Submission from the backend.....	8
Figure 2 - Message reception by C3 from C2	9
Figure 3 – Submission validation class diagram	15

10. CONTACT INFORMATION

eDelivery Support Team

By email: EC-EDELIVERY-SUPPORT@ec.europa.eu

Support Service: 8am to 6pm (Normal EC working Days)