

eDelivery Value Proposition Webinar

28 September 2023



Testimonials of eDelivery

Speakers



Speakers of today



Libor Bohac

Head of Unit

European Parliament



Pim Van der Eijk

Architect

Once-Only Technical System



eFTI Regulation

Lia Potec

Policy Officer

DG MOVE



EU Send

Kristof Popgeorgijev

Project Officer

DG DIGIT



Carlos Gonzalez Ruiz

Information Systems Architect

DG TAXUD



HealthData@EU

Natalia Zylinska-Puta

Team Leader

DG SANTE



DG DIGIT

Vincent Dijkstra

Head of Sector

DG DIGIT



EP Send

Libor Bohac



USE CASE – E-DELIVERY IN THE EUROPEAN PARLIAMENT

Reception of Official Documents

Libor Boháč / DG Presidency



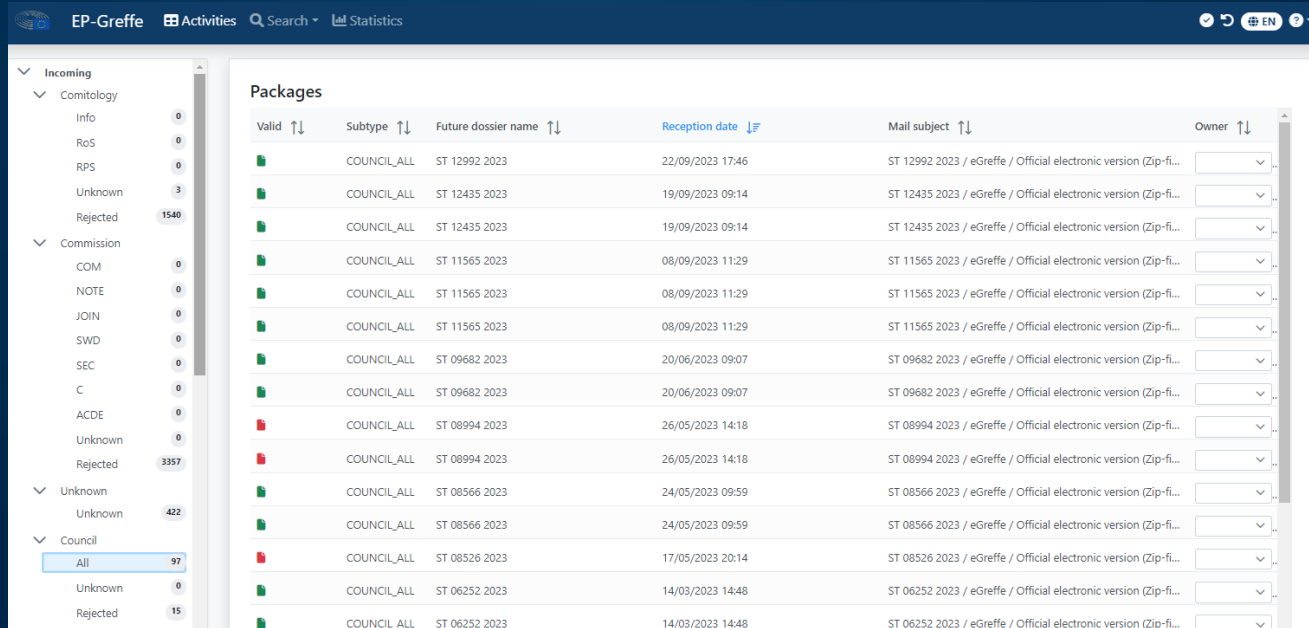
Europäisches Parlament

USE CASE – E-DELIVERY IN THE EUROPEAN PARLIAMENT

- need for structured exchange of official documents between institutions
- from printed documents to e-mails to document and data transmission systems
- eTrustex – Commission centred, 80+ clients receiving documents and accompanying metadata from the Commission; EP connected directly to the Commission
- replaced by eDelivery; EP set up its own access point (EPsend) to which its clients connect

USE CASE – E-DELIVERY IN THE EUROPEAN PARLIAMENT

- Commission end – sending client – Decide
- EP end – receiving client – EPgreffe



The screenshot displays the EP-Greffe interface. On the left, a navigation menu shows categories like 'Incoming', 'Comitology', 'Commission', 'Unknown', and 'Council'. The 'Council' category is selected, showing 97 items. The main area, titled 'Packages', contains a table with columns for 'Valid', 'Subtype', 'Future dossier name', 'Reception date', 'Mail subject', and 'Owner'. The table lists various packages, including those from 'COUNCIL_ALL' with their respective reception dates and subjects.

Valid	Subtype	Future dossier name	Reception date	Mail subject	Owner
Valid	COUNCIL_ALL	ST 12992 2023	22/09/2023 17:46	ST 12992 2023 / eGreffe / Official electronic version (Zip-fi...	
Valid	COUNCIL_ALL	ST 12435 2023	19/09/2023 09:14	ST 12435 2023 / eGreffe / Official electronic version (Zip-fi...	
Valid	COUNCIL_ALL	ST 12435 2023	19/09/2023 09:14	ST 12435 2023 / eGreffe / Official electronic version (Zip-fi...	
Valid	COUNCIL_ALL	ST 11565 2023	08/09/2023 11:29	ST 11565 2023 / eGreffe / Official electronic version (Zip-fi...	
Valid	COUNCIL_ALL	ST 11565 2023	08/09/2023 11:29	ST 11565 2023 / eGreffe / Official electronic version (Zip-fi...	
Valid	COUNCIL_ALL	ST 11565 2023	08/09/2023 11:29	ST 11565 2023 / eGreffe / Official electronic version (Zip-fi...	
Valid	COUNCIL_ALL	ST 09682 2023	20/06/2023 09:07	ST 09682 2023 / eGreffe / Official electronic version (Zip-fi...	
Valid	COUNCIL_ALL	ST 09682 2023	20/06/2023 09:07	ST 09682 2023 / eGreffe / Official electronic version (Zip-fi...	
Invalid	COUNCIL_ALL	ST 08994 2023	26/05/2023 14:18	ST 08994 2023 / eGreffe / Official electronic version (Zip-fi...	
Invalid	COUNCIL_ALL	ST 08994 2023	26/05/2023 14:18	ST 08994 2023 / eGreffe / Official electronic version (Zip-fi...	
Valid	COUNCIL_ALL	ST 08566 2023	24/05/2023 09:59	ST 08566 2023 / eGreffe / Official electronic version (Zip-fi...	
Valid	COUNCIL_ALL	ST 08566 2023	24/05/2023 09:59	ST 08566 2023 / eGreffe / Official electronic version (Zip-fi...	
Invalid	COUNCIL_ALL	ST 08526 2023	17/05/2023 20:14	ST 08526 2023 / eGreffe / Official electronic version (Zip-fi...	
Valid	COUNCIL_ALL	ST 06252 2023	14/03/2023 14:48	ST 06252 2023 / eGreffe / Official electronic version (Zip-fi...	
Valid	COUNCIL_ALL	ST 06252 2023	14/03/2023 14:48	ST 06252 2023 / eGreffe / Official electronic version (Zip-fi...	

USE CASE – E-DELIVERY IN THE EUROPEAN PARLIAMENT

- extended also to Council – EP document transfer
- further plans – EP is so far only receiving documents, in the future might be used also for sending of Documents (Commission, Council, Publications Office...)
- reuse of existing infrastructure allowing two way communication; only a question of the right client integrated in the business workflow

THANK YOU!

DG DIGIT

Vincent Dijkstra



e-Delivery Lessons Learned

Vincent DIJKSTRA

vincent.dijkstra@ec.europa.eu



e-DELIVERY

VALUE

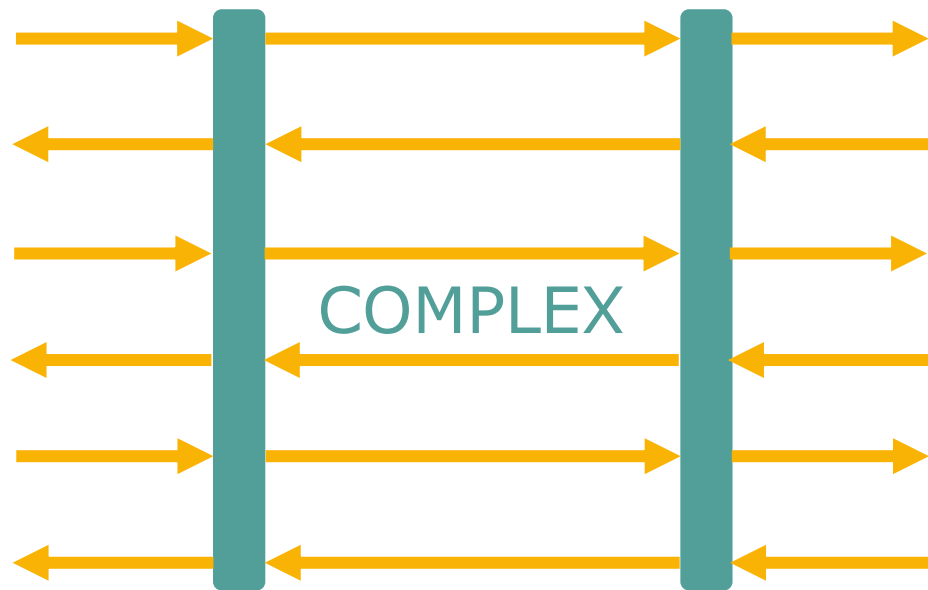
e-DELIVERY

SOLUTION

e-DELIVERY

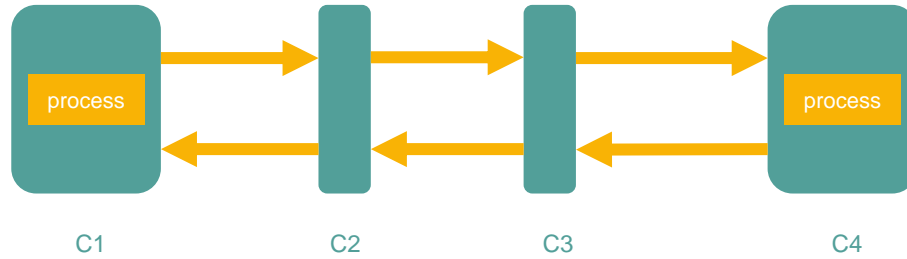


e-DELIVERY

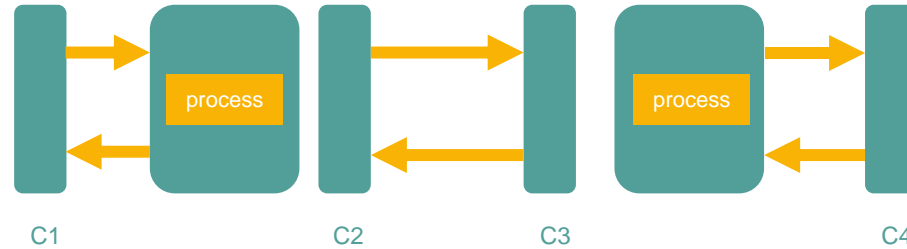


e-DELIVERY

Type: A



Type: B



e-DELIVERY

- Point-to-Point / Hub-Spoke
- Address Book (SML/SMP)
- Versioning / Release Management
- Certificates
- Ontology / Vocabulary
- Once Only Principle
- Timestamps
- Testing Strategy
- Monitoring
- e-IDAS
- SDBH / ASiC

Questions

OOTTS

Pim Van der Eijk



Once-Only Technical System (OOTS)

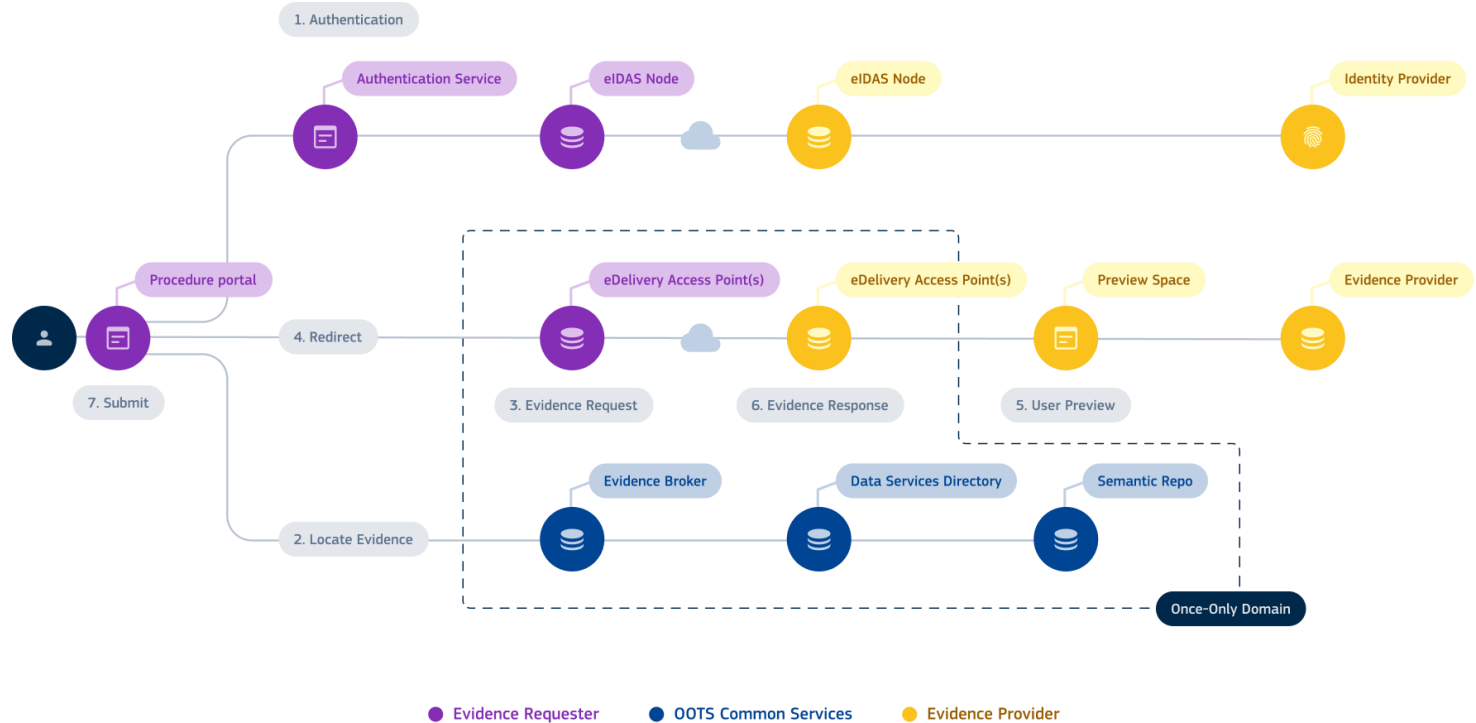
The **Once-Only Technical System** lets EU public authorities **securely exchange official documents and data** at the request of **citizens and businesses** as part of cross-border **administrative procedures**, e.g., when registering an address or vehicle when moving abroad.

This innovative system eliminates the complicated manual search, mapping, and fetching of data between Member State authorities, improving efficiency, making people's lives easier, and reducing the costs of mobility in the **Single Market**.

The Once-Only Technical System is a **technical framework for data sharing**. As of the end of 2023, citizens and businesses will be able to request official documents (known as “evidence”) to complete administrative procedures allowing people to study, work, live and retire in other EU countries in 7 simple steps.

The **decentralised architecture** connects public authorities, so they can exchange evidence at the citizen's or business' request.

OOTS Architecture



Rationale for using eDelivery in OOTS

- OOTS **leverages** the investments and successful results of many years of work by Member States and Commission on eDelivery and other Building Blocks.
- OOTS is a closed and mostly static network like many existing eDelivery systems presented today.
- eDelivery is a **stable, mature solution** proven in many other domains and used in large scale production use.
- eDelivery has advanced **security features** providing confidentiality and non-repudiation.
- eDelivery is flexible and general but can be **customised** to the standards and formats used in OOTS.
- eDelivery is **more than a specification**, also supporting documents, services, sample implementations, ecosystem of implementers, users etc.

HealthData@EU

Natalia Zylinska-Puta





European Health Data Space

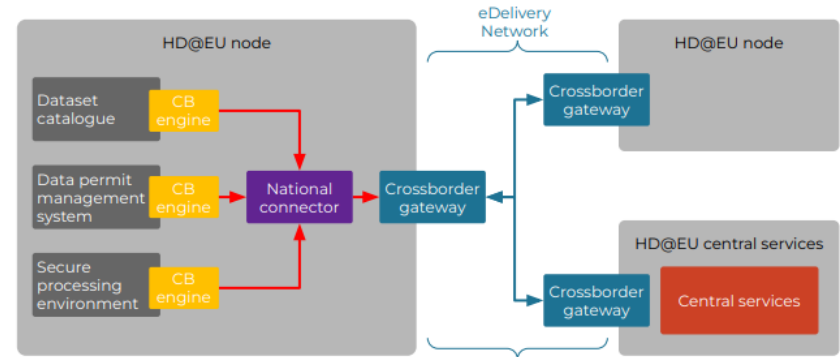
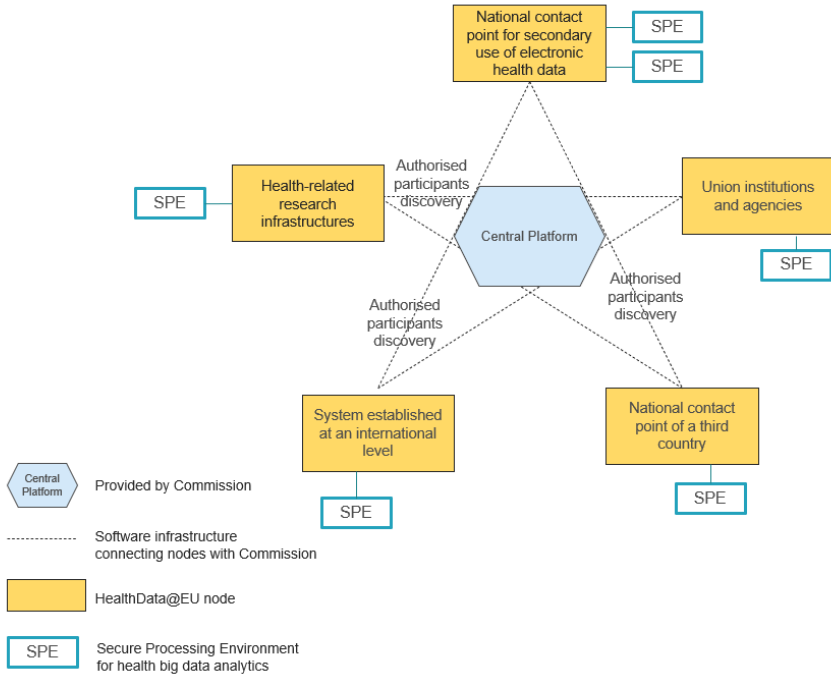
NATALIA ZYLINSKA-PUTA

Team Leader

*IT Portfolio Manager European Health Data
Space*

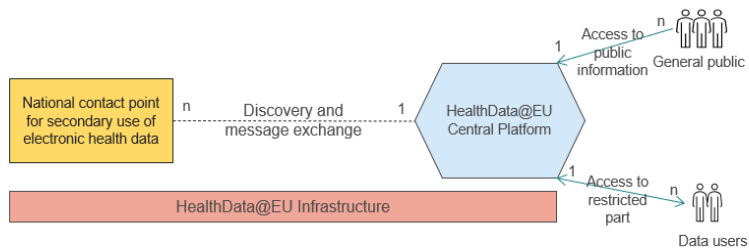
***European Commission
SANTE R4 Information systems***

HealthData@EU



Source: [EHDS Pilot Consortium POC Communication - Draft \(ehds2pilot.eu\)](https://ehds2pilot.eu)

HealthData@EU Central platform and infrastructure



Legend:

-  Operated by authorised participants
-  Operated by European Commission DG SANTE
-  Operated by authorised participants and European Commission DG SANTE

Common and secure software **infrastructure** will be ensured by the **eDelivery AS4 implementation (Domibus) and SMP/SML**

Multilingual, publicly accessible, searchable EU **Central Platform** where:

- ❖ EU metadata catalogue, aggregated from national dataset catalogues, and
- ❖ Results or output of the secondary use of electronic health data, are available – **with use of eDelivery**

After identification and authentication:

- ❖ Applying and monitoring of the status of data permit and data request
- ❖ Submitting the (1) Health Data Access Body Annual reports; (2) information about all granted and revoked permits; (3) information about applied penalties are available – **with use of eDelivery**

Useful links

- [Regulation on EHDS EUR-Lex - 52022PC0197 - EN - EUR-Lex \(europa.eu\)](#)
- Commission website on the European Health Data Space https://ec.europa.eu/health/ehealth-digital-health-and-care/european-health-data-space_en
- HaveYourSay entry on the European Health Data Space https://ec.europa.eu/info/law/better-regulation/have-your-say/initiatives/12663-Digital-health-data-and-services-the-European-health-data-space_en
- TEHDaS – Joint Action “Towards a European Health Data Space” on the secondary use of health data <https://tehdas.eu/>
- [European Health Data Space 2 Pilot Home - EHDS2 Pilot - Official website](#)

eFTI

Lia Potec





Electronic Freight Transport Information (eFTI) Regulation (EU 2020/1056)

eDelivery Webinar, 28 September 2023

Lia Potec, DG MOVE

Objectives



Promote use of digital technologies to fulfill regulatory requirements within the EU

Reduce administrative cost for operators and enhance the efficiency of rule enforcement



Acceptance by public authorities of freight transport information made available electronically



Uniform implementation of the obligation of acceptance by authorities



Interoperability of the IT systems and solutions used

“This Regulation establishes a [harmonised] legal framework for the electronic communication of regulatory information between the economic operators concerned and competent authorities in relation to the transport of goods on the territory of the Union” (Article 1)

Key elements



Information (already) required by EU & national legislation

- Legislation applicable to the transport of goods on the EU hinterland
- Legislation concerning the means of transport and the personnel not concerned



Obligation for all competent authorities in all EU Member States

- Accept the information electronically
- Use common requirements/technical specifications for acceptance (defined by EU implementing legislation)



Option for the economic operators

- Facilitation – possibility to present the information electronically; no obligation
- When opting, obligation to use certified eFTI platforms or service providers



Common requirements for service providers and platforms

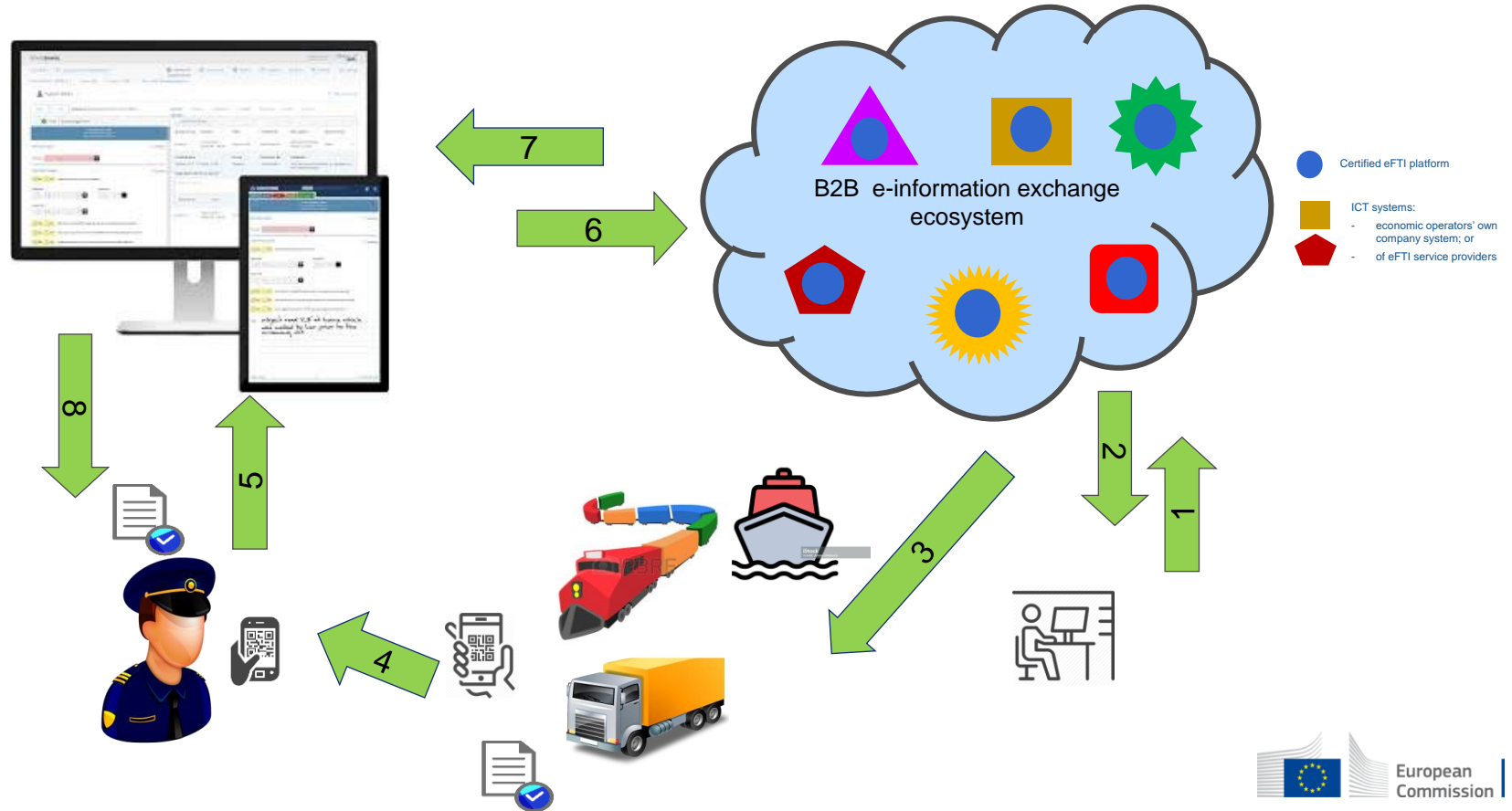
- For platforms' functionalities and, respectively, service providers' obligations
- Common implementation specifications (defined by EU implementing legislation)



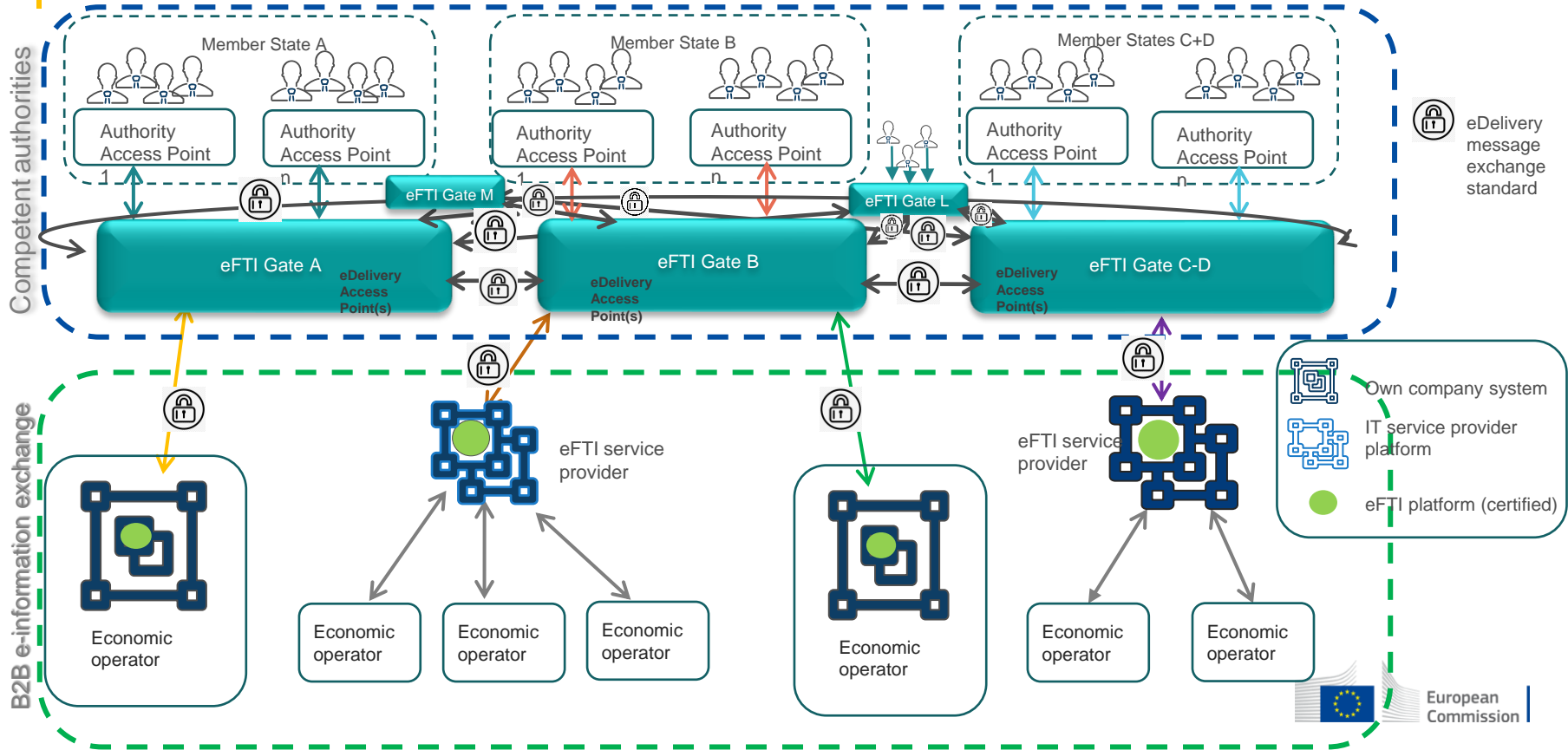
Harmonised third-party certification for service providers and platforms

- One stop shop, valid EU-wide

In practice (a simplified vision)...



Proposed implementation architecture



eDelivery for eFTI – Why?

- Decentralised cross-border architecture → need for agreed message exchange specifications among many actors/system components
 - ✓ eDelivery offers readymade standard specifications based on open standards
 - **Don't reinvent the wheel:** No need for complex, highly technical and lengthy discussions to agree on and update the specifications
 - ✓ eDelivery has already been implemented in several cross-border projects
 - **Re-use:** Member States and private stakeholders can leverage the experience and expertise already gained
 - **Convenience:** Several compliant software solutions already available
 - **Benefits of scale** : A growing community of users that can exchange experience, discuss possible improvements
 - ✓ eDelivery offers central support services
 - **Savings:** Relying on the available tools & services reduces the need for additional resources

Keep in touch



European Commission, DG MOVE, Unit D.1 Maritime Transport and Logistics

MOVE-DIGITAL-TRANSPORT@ec.europa.eu



[eFTI Regulation](#)

[eFTI Regulation impact assessment](#)



[Register of Commission Expert
Groups: DTLF](#)

www.DTLF.eu



[Videos:](#)

<https://ec.europa.eu/assets/move/video/DTLF-SG1.mp4>

<https://ec.europa.eu/assets/move/video/DTLF-SG2.mp4>

Thank you



© European Union 2020

Unless otherwise noted the reuse of this presentation is authorised under the [CC BY 4.0](https://creativecommons.org/licenses/by/4.0/) license. For any use or reproduction of elements that are not owned by the EU, permission may need to be sought directly from the respective right holders.



ICS2

Carlos Gonzalez Ruiz





eDelivery in ICS2 & CESOP

Current use in ICS2 & future use in CESOP project

September 2023

AS4 & eDelivery – Added Value

Open Standard

- Open standard ([ISO15000-2:2021](#)) for the secure and payload-agnostic exchange of messages

Confidentiality

- Supports transport & message level **encryption**

Integrity

- Message **integrity** using digital signature / sealing

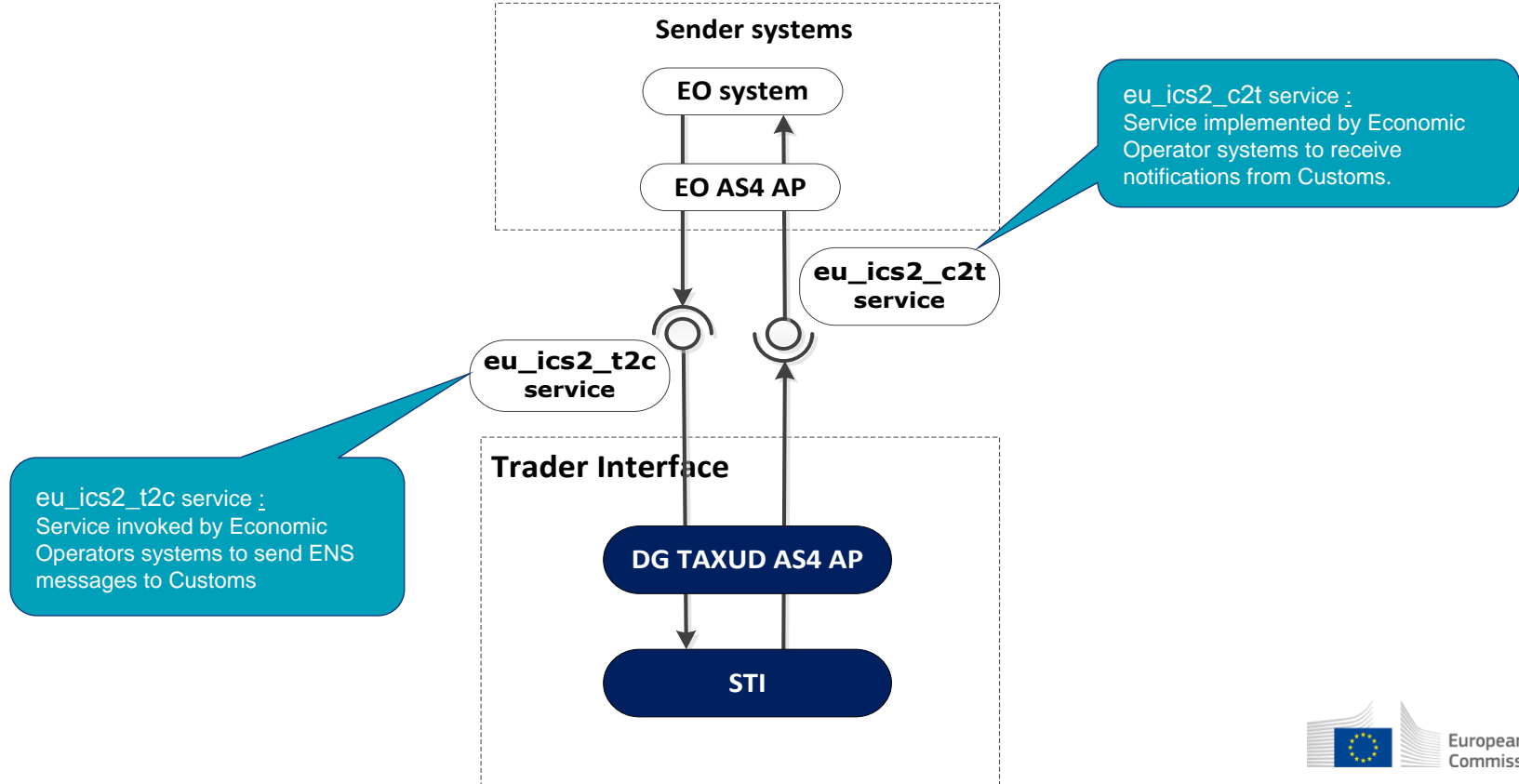
Non-Repudiation

- Support for business receipt of **non-repudiation**

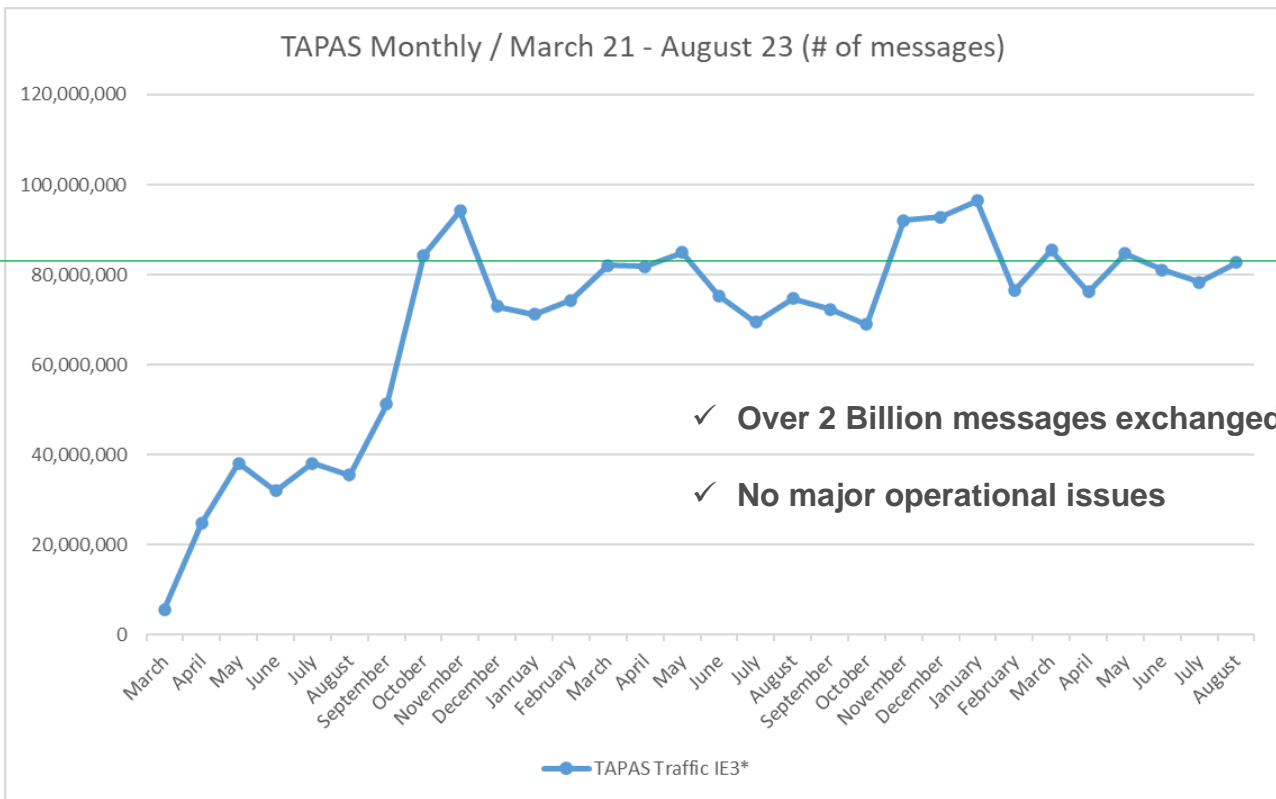
Exchange Mechanisms

- Support for **push/pull** mechanisms
- Payload compression and **split & join** functions

Trader Interface Services



Operational Capacity Data



August 2023
82.7 M messages

AS4 use in ICS2 & CESOP

Key differences:

- ICS2 - EOs while CESOP - MS
 - Authentication mechanism: different or no use of UUM&D / New type of PartyID
- Message size and frequency:
 - Much larger less frequent messages (use of Split & Join new eDelivery feature)
- Closed set of partners:
 - Any EO can decide to connect to TAPAS while MS APs would be more stable

Key similarities:

- Multiple partners connected to central AP
- Confidentiality & Integrity requirements
- Non repudiation requirements (legal obligation)
- Interoperability requirements

Thank you



© European Union 2020

Unless otherwise noted the reuse of this presentation is authorised under the [CC BY 4.0](https://creativecommons.org/licenses/by/4.0/) license. For any use or reproduction of elements that are not owned by the EU, permission may need to be sought directly from the respective right holders.



EU Send

Kristof Popgeorgijev





Exchange files in a secure way via **EU SEND**

Contact: DIGIT-EU-Send@ec.europa.eu

Managed services provided by DIGIT B3



EU Access

It is a component of the Identity and Access Management solution and it provides a reusable authorisation platform for **uniform and secure access control to applications** accessible by any EU Login user.



EU Captcha

It offers a service based on the **open source EU-CAPTCHA released under the EUPL** (European Union Public License) that is maintained, secure, user friendly and multilingual.



EU Provisioning

It is the dedicated corporate solution and the backbone for the IAM (Identity and Access Management) services for the EUIBAs. It transforms the **natural identities into digital ones** altogether with the necessary attributes to determine their access rights.

ICDT TFD recommended tools for EUIBAs



EU Sign

It enables to create, validate and/or extend **eIDAS-compliant electronic document signatures and/or seals and timestamps**



EU Login

It is the Commission's **user authentication service**. It increases the security of the Commission's IT systems while reducing how often users must supply their credentials



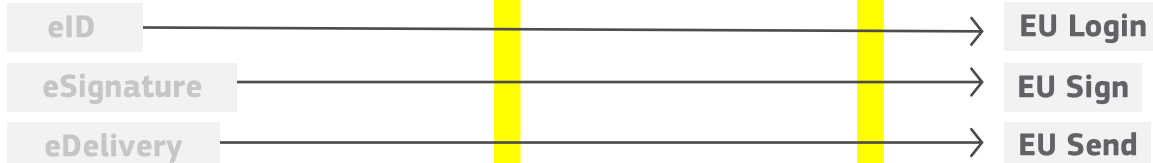
EU Send

It enables the **exchange data and documents in a secure way** with any private or public entities in the Member States and third countries.

Building Blocks vs Managed Services

DIGITAL Building Blocks

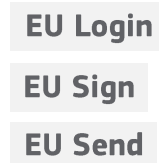
Building Blocks promote the adoption of the same open standards and specifications, to ensure interoperability across sectors for common functionalities in any project/platform.



Funded by: DIGITAL Programme

DIGIT Managed Services

DIGIT Managed Services support European Institutions and Agencies by managing the setup and operation of basic digital capabilities based on the Building Blocks.



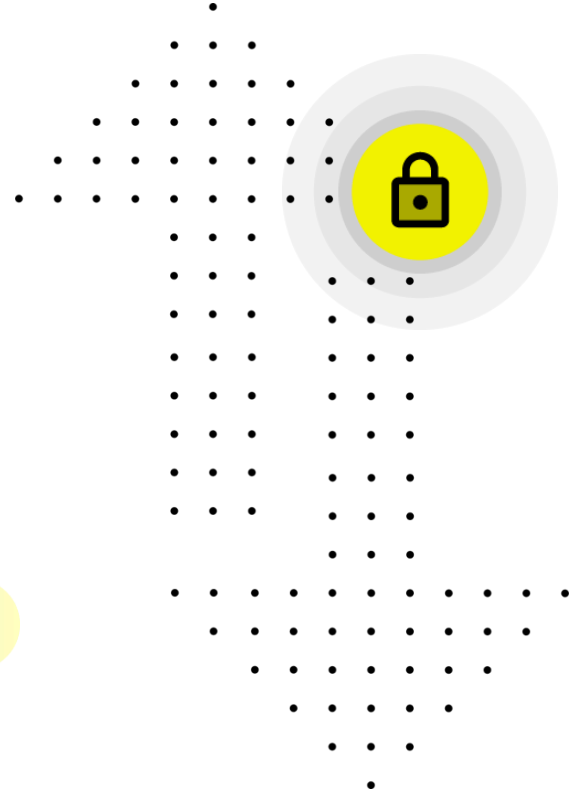
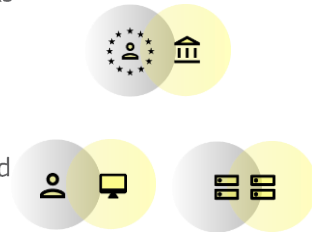
✓ **Hosting (infrastructure)**
✓ **SLAs**
✓ **Dedicated Ops and Support teams**

DIGIT operated services based on the DIGITAL Building Blocks and in the scope of the Reusable Solutions Platform

What is EU Send?

Managed service for **exchanging electronic data and/or documents in a secure way**

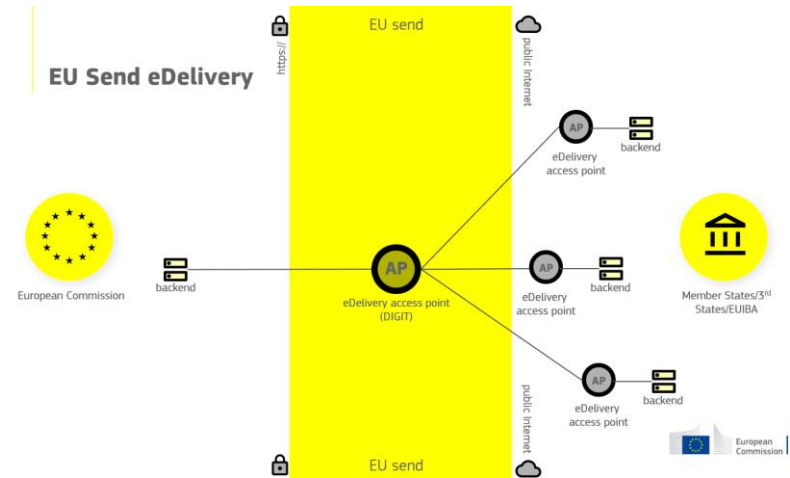
- ✓ Based on standard solutions and offers existing building blocks (eDelivery, eTrustEx, sFTP) as a service
- ✓ Offered to the EC and soon to other Institutions and Agencies
- ✓ Payload and business agnostic, secure data exchange with end users or systems
- ✓ Exchange of large payloads up to very large files and up to SNC level



The value of eDelivery as a service within the EC IT landscape

Through EU Send, **EC projects can benefit from reusing eDelivery as a service** by **outsourcing** the operations and maintenance of their eDelivery access point

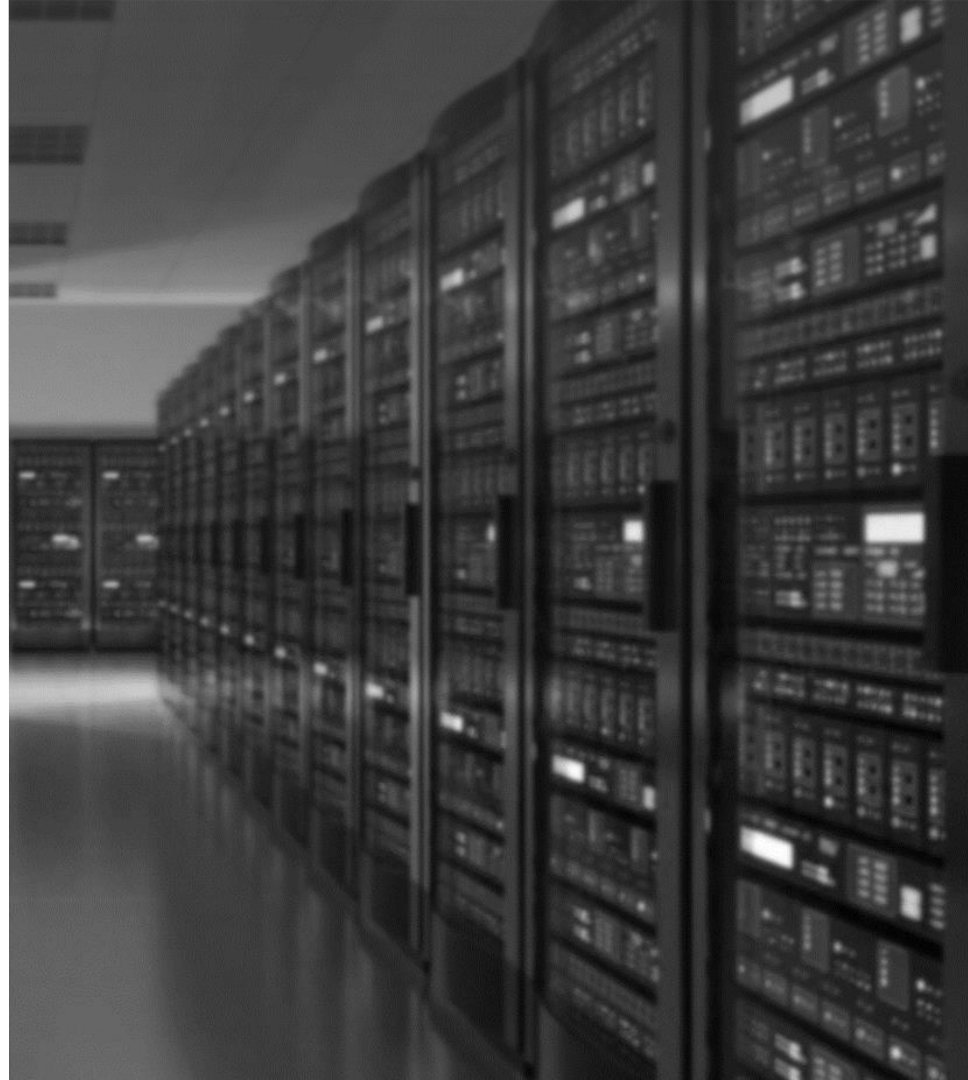
- ✓ **Concentrate** resources on their **core business** to achieve their policy objectives
- ✓ **Shorter time to market** by reusing existing shared infrastructure and expertise of the service provider
- ✓ **No resources wasted** on creating, securing, and operating their own secure exchange network



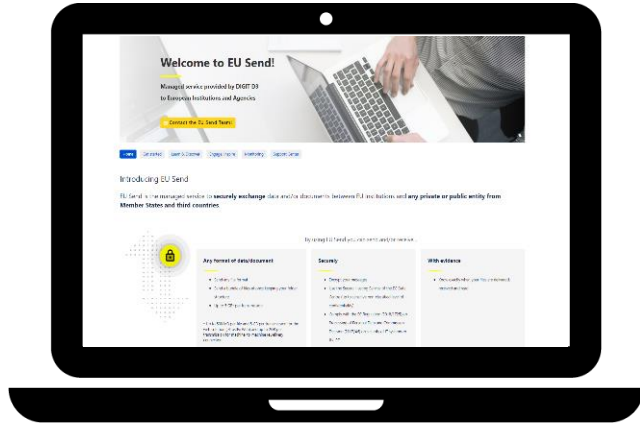
The value of eDelivery as a service on the market

eDelivery can present a **business opportunity** to commercial IT service providers

- ✓ Provide eDelivery as a **service to SMEs or MS public administration authorities**.
- ✓ Same benefits apply to the users on taking advantage of such commercial services.
- ✓ Service providers can choose from a **wide selection of eDelivery compliant solutions already available** on the market.



Thank you for your attention!



Get in touch!

Contact the team directly
DIGIT-EU-Send@ec.europa.eu

Read more about EU Send
[EU Send Wiki](#)

Q&A



Thank you

& stay in touch

