

Welcome to the CEF eDelivery Live Hands-on Webinar: Send your first AS4 message!

19 June 2018
Start 15:00 (CET)

Ground Rules for the Live Webinar



Please mute your microphone before the webinar starts



To chat with other participants and submit questions, please use the Chat function to the right of your screen

To connect your audio go to the Quick Start tab and connect your audio (dial-in, dial-out or connect via computer)



CEF eDelivery

Hands-on Webinar: Send your first AS4 message!

Adrien Ferial - DIGIT
Ioana Dragusanu - DIGIT

Today's speakers

Adrien Ferial

Adrien Ferial is the leader of the technical office of CEF eDelivery which is responsible for the evolutive maintenance of the sample implementations. He joined DIGIT in 2014 as a technical expert and has more than 10 years of experience in IT. Through his professional experience, he participated to multiple projects in software development and system analyses, including managing and implementing large, scalable, distributed systems.

Ioana Dragusanu

Ioana Dragusanu has been working for the past three years at DIGIT on the CEF eDelivery project, implementing Domibus - the open source, eDelivery AS4 conformant Access Point. She has a strong understanding and practical experience in creating robust SOAP and REST web-services using J2EE technologies, SOA principles and enhanced knowledge on the B2B communication area, ebMS3.0 standard, eDelivery AS4 profile, SOAPwA protocol, x.509 digital certificates for encryption and signing.

Agenda

- | | | |
|---|---|-----|
| 1 | Introduction to CEF eDelivery
Adrien Ferial – DIGIT | 10' |
| 2 | CEF eDelivery Service offering
Adrien Ferial – DIGIT | 10' |
| 3 | Hands-on session - Send your first AS4 message:

Launch instance on Fiware Lab
PMode Configuration
Security File Configuration
Message sending

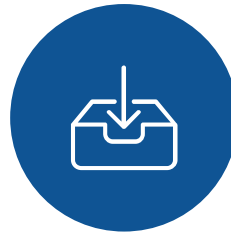
Ioana Dragusanu- DIGIT | 45' |
| 4 | Q&A and sharing of experiences
All | 25' |

Highlights of the webinar

DURING



Ask questions



Download the presentation

AFTER



Download the webinar recording



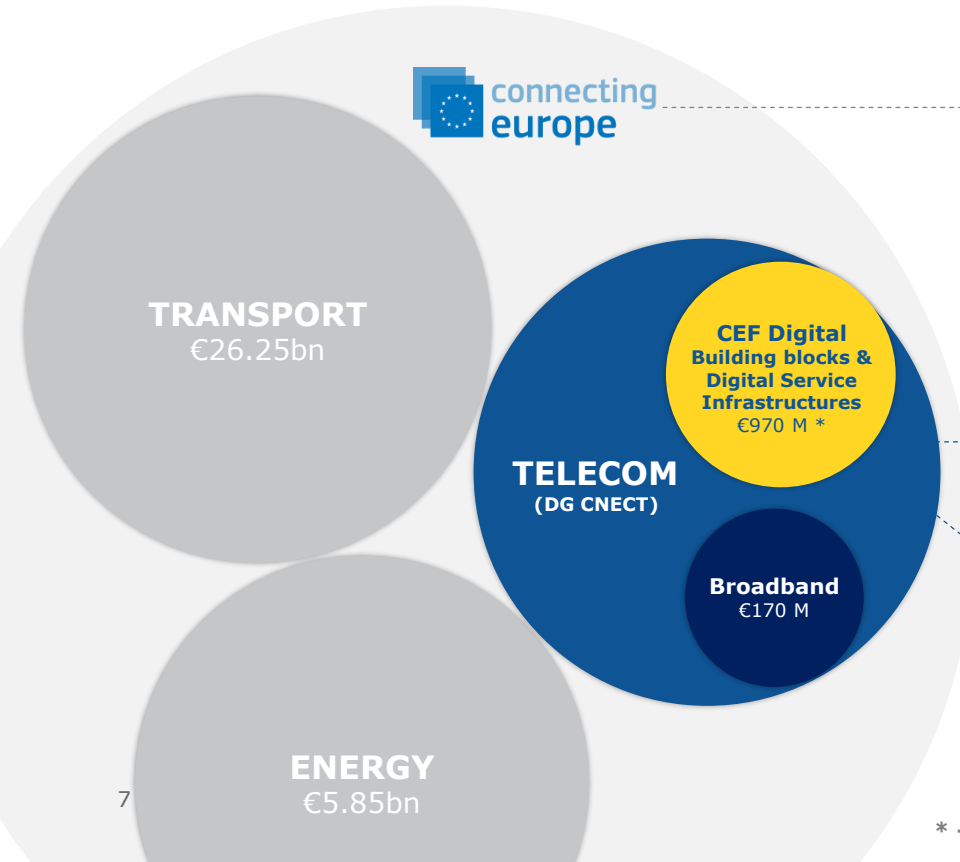
Interact with our online community

1

Introduction to CEF eDelivery

Adrien Ferial – DIGIT

The CEF building blocks are funded by the Connecting Europe Facility



CEF Regulation

The Connecting Europe Facility (CEF) is a regulation that defines how the Commission can finance support for the establishment of trans-European networks to reinforce an interconnected Europe.

CEF Telecom Guidelines

The CEF Telecom guidelines cover the specific objectives and priorities as well as eligibility criteria for funding of broadband networks and Digital Service Infrastructures (DSIs).

CEF Work Programmes

Translates the CEF Telecom Guidelines in general objectives and actions planned on a yearly basis.

CEF enables the European Digital Transformation

1 Sectorial Projects

Justice, home affairs and citizens' rights

Science and Technology

Business

Employment and Social Rights



eJustice Portal



ODR



Open Data



BRIS



EESSI

etc.

2 Building Blocks



IDENTIFY with
eID



SIGN with
eSignature



EXCHANGE with
eDelivery



INVOICE with
eInvoicing



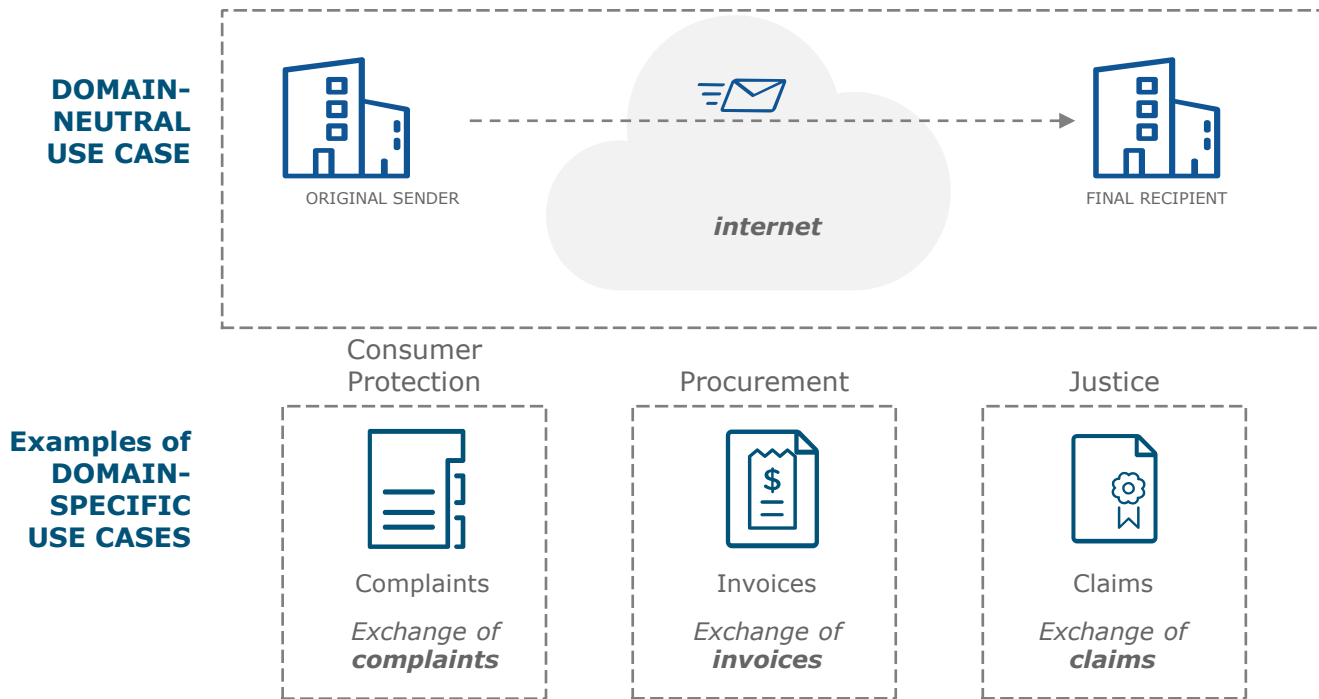
TRANSLATE with
eTranslation

3 Grants



Typically
'deployment' projects
at national level
(up to 75% of
eligible cost)

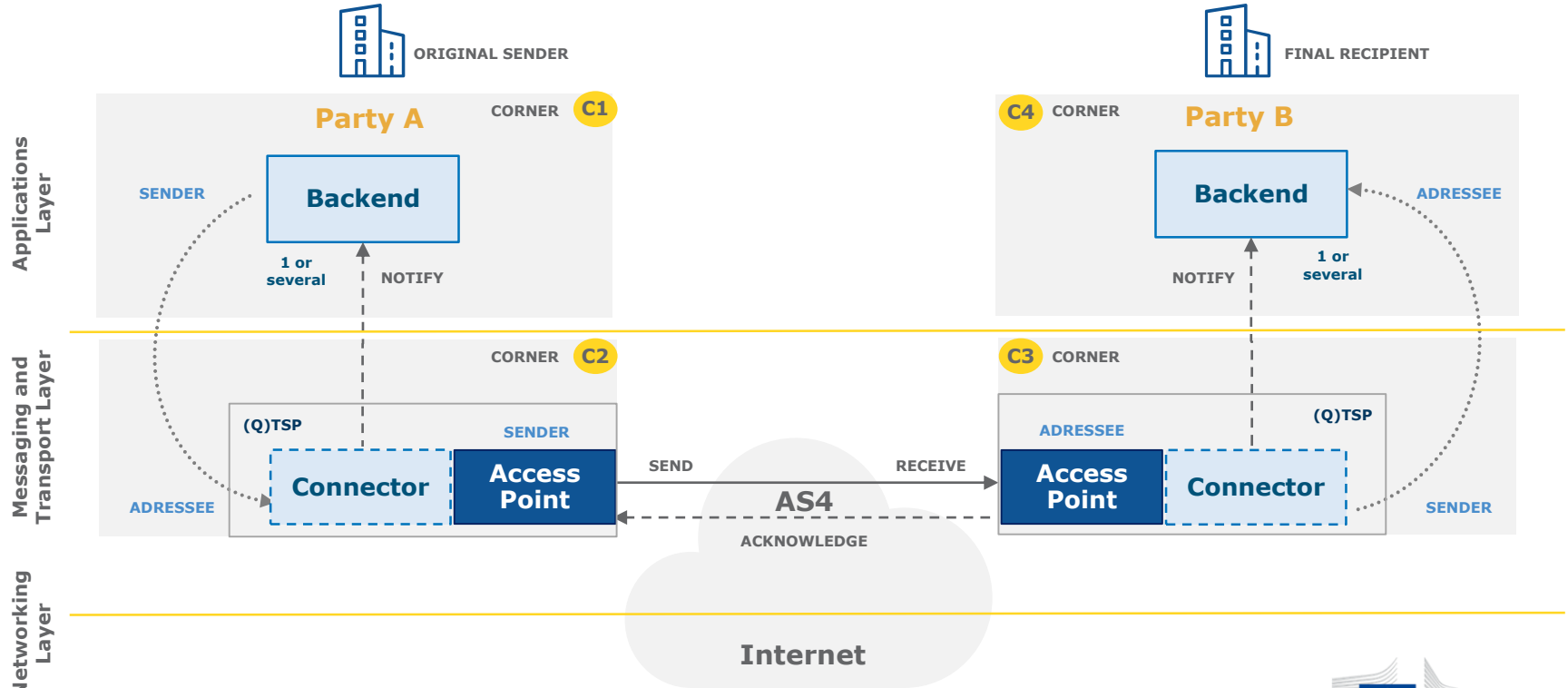
The eDelivery Use-Case



eDelivery Messaging Infrastructure based on the 4-Corner Model

Static discovery

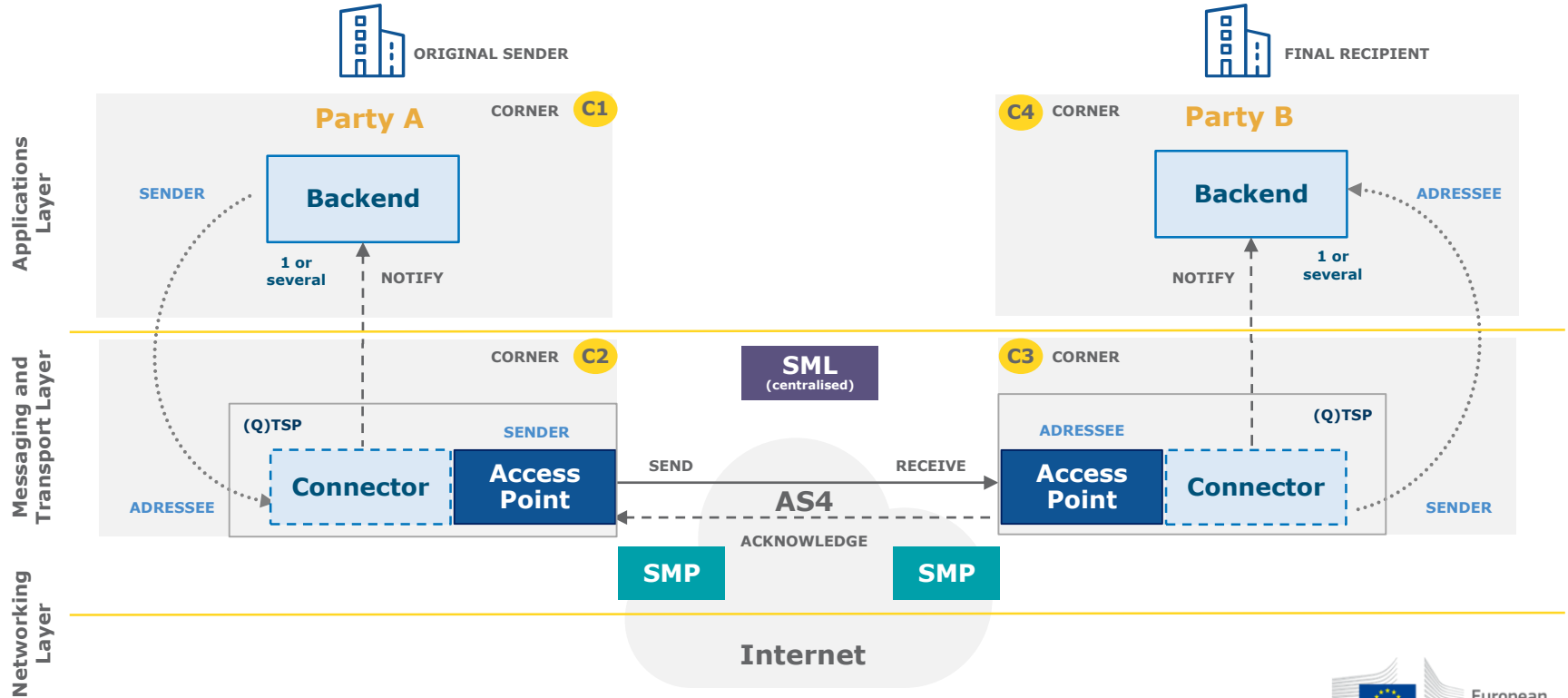
Required component
 Optional component



eDelivery Messaging Infrastructure based on the 4-Corner Model

Dynamic discovery

Required component
 Optional component



CEF eDelivery specifications

•The approach employed by eDelivery is to promote the use of existing technical specifications and standards rather than to define new ones.

•The profiling work of eDelivery and PEPPOL on these standards, i.e. constraining configuration choices, is equally taken on board. Even though eDelivery makes software available implementing these specifications, the use of commercial software or other Open Source software projects is also possible.

COMPONENT

Access Point

Digital Certificates

Connector

Service Metadata Locator (SML)

Service Metadata Publisher (SMP)

KEY SPECIFICATIONS

- **eDelivery AS4 profile of the ebMS3/AS4 OASIS Standards**
- **PEPPOL AS2 profile of AS2 and SBDH (for the eProcurement only)**

- **ETSI – Electronic Signatures and Infrastructures profile**

- **ETSI REM for evidences**

- **eDelivery Profile based on the OASIS BDXL Specification**
- **eDelivery ebCore Party ID Profile**

- **eDelivery Profile based on the OASIS BDX-SMP Specification**

CEF TELECOM 2018-2

#CEFTelecom

Deadline *18 September 2018*

**Automated
Translation**

€5 million

eDelivery

€0.5 million

eInvoicing

€5 million

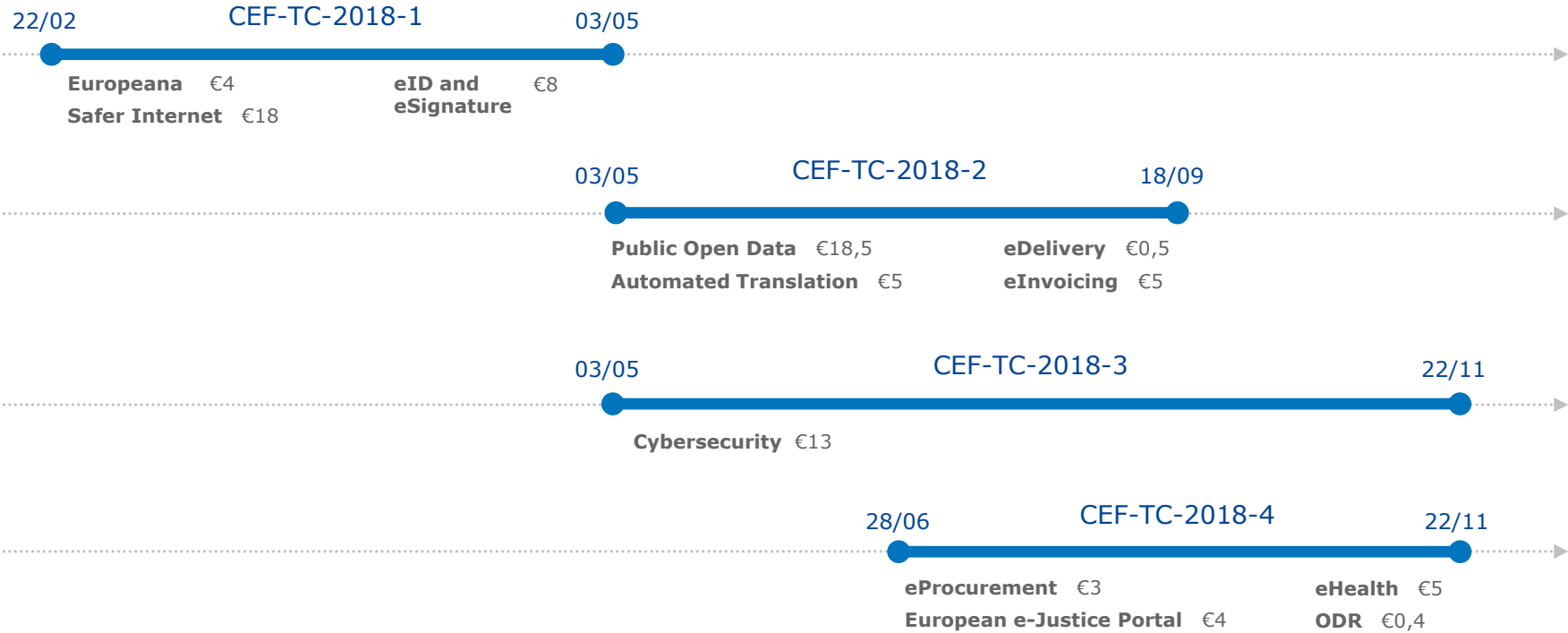


@inea_eu



European
Commission

More information: <https://ec.europa.eu/inea/>



* All values are expressed in MILLION euro

eDelivery onboarding-race



PHASE

PROSPECTING

ELICIT requirements

COMMITMENT GATE

DESIGN

eDelivery infrastructure

SET UP

SELECT

eDelivery solutions

DEPLOY

eDelivery solutions

OPERATE

eDelivery solutions

CEF DSIs

CyberSec DG CNECT
eTranslation DGT
ELRC DGT
ePayments ECB

eHealth (AS4) DG SANTE

eHealth (SMP) DG SANTE
EESSI DG EMPL

ODR DG JUST
eProcurement (*) GROW DIGIT

EU-CEG DG SANTE
PNR (<i>regulated</i>) DG HOME
e-Justice eCodex DG JUST
BRIS DG JUST

Other Policy Projects

Customs Single Window DG TAXUD
ECRIS DG JUST
IRI DG JUST
Maritime Single Window DG MOVE
Central Clearance Import DG TAXUD
IRMA DG HOME
e-enforcement academy DG JUST
IMI DG GROW

CISE DG MARE
eTransport Docs DG MOVE

TACHonet DG MOVE
eEvidence DG JUST
EUDAMED 3 DG GROW

DECIDE (upgrade) SG
EPREL DG ENER
ICS2 DG TAXUD

Member State led projects (including CEF grants)

Utdataprojektet ESV

TOOP (once-only)
Development of NL eDelivery gateway Logius.nl

Slovenia Supreme Court's communications Laurentius
e-Impact (CEF Transport)

NOBLE project (Postal Services)

PEPPOL (upgrade to AS4)

Other institutions

European Data Protection Supervisor
European Union Agency for Railways
European Chemicals Agency NEW
European Anti-Fraud Office NEW

Parliamentary Q + Triologue + OP Parliament
European Aviation Safety Agency

European Citizens' Initiative

CixP The European Council
eDocX2017 DG HOME (EMCDDA)

ENTSOG (Gas operators)

(*) Also part of PEPPOL

Roadmap to deploy CEF eDelivery

Domain Owner

Participants in eDelivery Messaging Infrastructure



PHASE

ELICIT

requirements

DESIGN

eDelivery infrastructure

SELECT

eDelivery solutions

DEPLOY

eDelivery solutions

INTEGRATE

with backend(s) with partners

OPERATE

eDelivery solutions



CEF TEAM

Technical Specifications

Onboarding

Self-Assessment tool

Documentation (COD, SOD, ...)

Design message exchange model

List of Software solutions

SML Service

PKI Service

Service Desk

Training and deployment

Connectivity Testing

Service Desk

CEF eDelivery Community



YOUR TEAM

- Attend workshops
- Complete self-assessment tool
- Identify business requirements
- Carry out feasibility study

- Design discovery model
- Design security model
- Design integration approach
- Participate in the writing of a SDD
- PoC (optional)

Open source

- Assess OSS projects
- Customise/extend solution

Commercial solution

- Assess Vendors
- Buy solution

Custom built

- Build solution

- Deploy components
- Configure components

- Integrate with eDelivery Access Point
- Perform Integration testing
- Perform Pre-production testing

- Participate in Connectivity testing
- Perform Pre-production testing

Open source

- Hosting
- Maintenance

Commercial solution

- Hosting
- Fees

Custom built

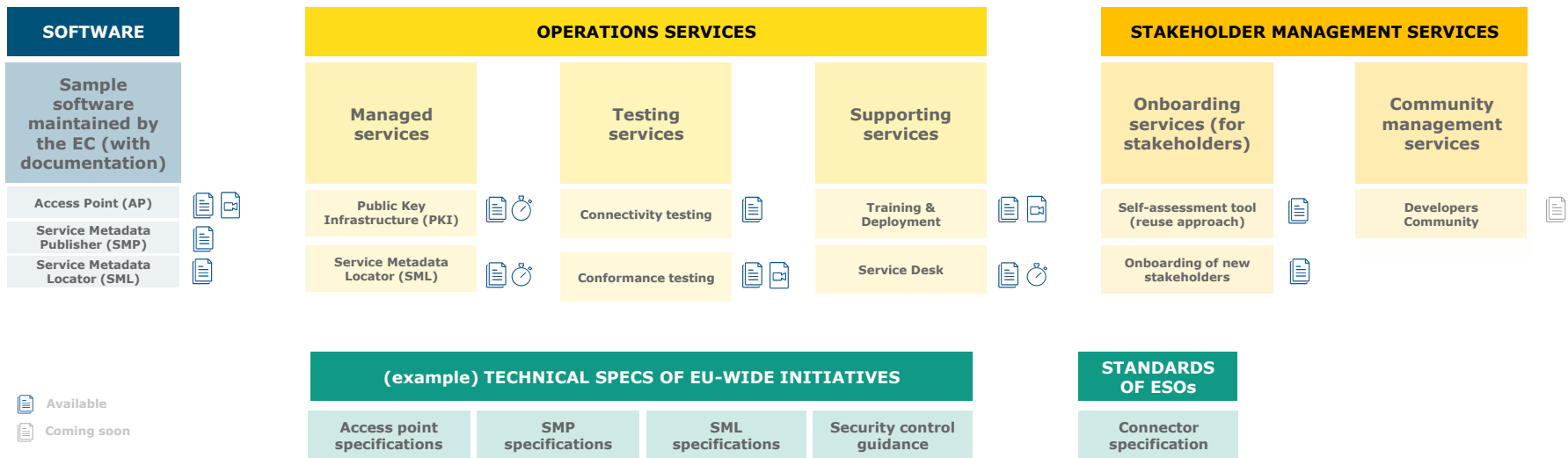
- Hosting
- Maintenance


2

CEF eDelivery Service offering

Adrien Ferial – DIGIT

CEF eDelivery Service offering



-  Available
-  Coming soon



Service offering Description (SoD)

All services are described in an SoD describing its purpose, the users for which it is for, its benefits and the process to obtain it



Service Level Arrangements (SLA)

Documents that describe Service Level Targets to be reached when delivering Building Block Services.



eLearning, videos, success stories

Some services feature multimedia such as eLearnings, instructional videos or success stories to help grasp what the service is about

CEF Digital platform

CEF eDelivery service offering, and more about the building block, can be found online

[CEF Digital >](#)

Operations services

Managed services

OBJECTIVE OF THE SERVICE

Sample software centrally hosted and managed by the EC, based on sample implementations that are based on technical specifications of CEF eDelivery.

The European Commission develops, maintains and provides software as a service for the following components of a CEF eDelivery solution:

- Public Key Infrastructure (PKI)
- Service Metadata Locator (SML)

These services facilitate the re-use of CEF eDelivery by different Policy Domains.

BENEFITS

- Reduced cost of hosting the service, which is sustained by the European Commission
- Full support by the European Commission
- Defined and agreed Service Levels



[Back to Service offering >](#)

USERS

Policy Domains

STATUS

- Service
- Documentation

More info

CEF Digital



Get started

Contact us



Connectivity testing

OBJECTIVE OF THE SERVICE

Test if a newly installed AS4 Access Point, conformant with the CEF eDelivery specifications, can successfully communicate with the sample AS4 Access Point hosted by the European Commission. If successful, these tests confirm that the new Access Point is in all likelihood correctly deployed and configured.

The CEF Support Team facilitates the Connectivity Testing by making available a sample AS4 Access Point in a cloud environment, as well as providing guidelines and support during the testing process.

BENEFITS

- Confirm that newly deployed AS4 Access Points can successfully communicate with a neutral organization i.e. the sample Access Point of the European Commission;
- Testing anywhere at anytime
- Testing supported by professional staff of the European Commission



[Back to Service offering >](#)

USERS

Software Providers

Service Providers

STATUS

Service

Documentation

More info

CEF Digital



Get started

Contact us



Conformance testing

OBJECTIVE OF THE SERVICE

Verify that an implementation of the CEF eDelivery Access Point and SMP specifications, a software package either commercial or Open Source, conforms to the specifications of the CEF eDelivery Access Point.

The following specifications are tested within the scope of this service:

- eDelivery AS4 Profile
- eDelivery SMP Profile

The CEF eDelivery Team provides ready to use test cases, a testing platform, and supports the users of the CEF eDelivery Conformance Testing service during the entire testing process.

BENEFITS

- Confirm and assure your users/customers that your software package or implementation of the CEF eDelivery Access Point conforms to the CEF eDelivery specifications
- Testing anywhere at anytime
- Testing supported by professional staff of the European Commission



[Back to Service offering >](#)

USERS

Software Providers
Service Providers

STATUS

● ● ● Service
● ● ● Documentation

More info

CEF Digital



Get started

Contact us



eDelivery AS4 conformant solutions



[CEF Digital Home](#) > [eDelivery](#) > [All CEF eDelivery services](#) > [Access Point software](#)

eDelivery AS4 conformant solutions

This page lists the solutions that have passed or are in the process of passing the conformance testing according to the eDelivery AS4 profile:

- [Axway](#)
- [Bizbrains](#)
- [Domibus](#) (EC sample implementation)
- [eefecta Server](#)
- [EESSI AS4.NET](#)
- [Edicom ASx Server](#)
- [Flame](#)
- [Holodeck](#)
- [IBM](#)
- [iFenix](#)
- [Laurentius](#)
- [Mendelson](#)
- [Navitasoft – IP Systems AS4-IP](#)
- [RSSBus](#)
- [ADES](#)
- [Integration Cloud](#)

More information on CEF Digital

[Conformant Solutions >](#)

Domibus	
Flame	
Holodeck	
IBM	
Laurentius	
Mendelson	
RSSBus	
iFenix	
Axway	
EESSI AS4.NET	
eefecta Server	
Bizbrains	
Edicom Asx server	
Navitasoft	
ADES	
Integration cloud	

Conformant

Ongoing

Software

Sample software maintained by the EC

OBJECTIVE OF THE SERVICE

Standard software implementations of the technical specifications of CEF eDelivery. The European Commission maintains and develops sample software that is openly available to be re-used. The following components of a CEF eDelivery solution are provided:

- Access Point
- Service Metadata Publisher (SMP)
- Service Metadata Locator (SML)

Through the "Operational Management Board", CEF eDelivery stakeholders define the evolution of these solutions, by suggesting features that are then developed by the CEF's team.

BENEFITS

- Released under an open source license
- Viable solutions for use in production environment
- Fully supported by the European Commission
- Based on market-driven technical specifications



[Back to Service offering >](#)

USERS

Software Providers
Service Providers
Policy Domains

STATUS

Service
 Documentation

More info

[CEF Digital >](#)

Get started

[Contact us >](#)

Operations services

Supporting services

OBJECTIVE OF THE SERVICE

The CEF eDelivery team offers:

- **Service Desk** – a Single Point of Contact (SPOC) to address questions, incidents, requests and changes reported by the Users with regards to the CEF eDelivery service offering.
- **Training and deployment support** - Training sessions about the technical specifications underpinning the components of CEF eDelivery, the services offered by the Commission and its sample implementations, and interactive sessions to support in the deployment of the solution.

BENEFITS

- Day to day monitoring and 24h/7days service to maintain a high-level of availability and capacity of the CEF eDelivery Managed Services
- Proactive incident detection and resolution
- Increased autonomy of the Public Administration in handling and maintaining the CEF eDelivery components



[Back to Service offering >](#)

USERS

Policy Domains
Software Providers
Service Providers

STATUS

Service
 Documentation

More info

[CEF Digital >](#)

Get started

[Contact us >](#)

Onboarding services

OBJECTIVE OF THE SERVICE

CEF offers onboarding services for new projects interested in re-using CEF eDelivery:

- **Self-assessment tool** - a survey that maps the requirements of the users to the CEF eDelivery Service Offering. During the self-assessment, users assign different scores to the relevant requirements of their business system and the eDelivery messaging infrastructure. Based on the answers provided, the tool calculates how CEF eDelivery can help users achieve their goals by indicating which services provided by CEF eDelivery will allow them to meet their specified needs and requirements.
- **Onboarding of new stakeholders** – A direct contact point for all policy domains interested in re-using CEF eDelivery, that will facilitate the understanding, adoption and deployment of the solutions.

BENEFITS

- Business-driven and time-efficient assessment
- Comparability – the self-assessment tool provides a benchmarking with use cases of other projects already re-using CEF eDelivery
- Direct and easy contact with the CEF eDelivery technical teams, through the onboarding services



[Back to Service offering >](#)

USERS

Service Providers

Policy Domains

STATUS

Service

Documentation

More info

CEF Digital



Get started

Contact us



Stakeholder management services

Community management

OBJECTIVE OF THE SERVICE

Develop, expand and engage with a community of developers contributing to the evolution of CEF eDelivery's open source sample implementations.

Among the 5 components that the CEF eDelivery team develops, CEF manages an online community of developers interested in contributing to the code of the sample implementations.

BENEFITS

- Cost effective development
- Wide set of skills
- Faster response to emerging requirements



[Back to Service offering >](#)

USERS

Developers

STATUS

- Service
- Documentation

More info

[CEF Digital >](#)

Get started

[Contact us >](#)

3

Hands-on session - Send your first AS4 message:

Launch instance on Fiware Lab

PMode Configuration

Security File Configuration

Message sending

Ioana Dragusanu- DIGIT

Let's get started



eDelivery
Connecting Europe

<https://ec.europa.eu/cefdigital/wiki/display/CEFDIGITAL/eDelivery>



FIWARE

Catalogue



<https://catalogue.fiware.org/enablers/electronic-data-exchange-domibus>



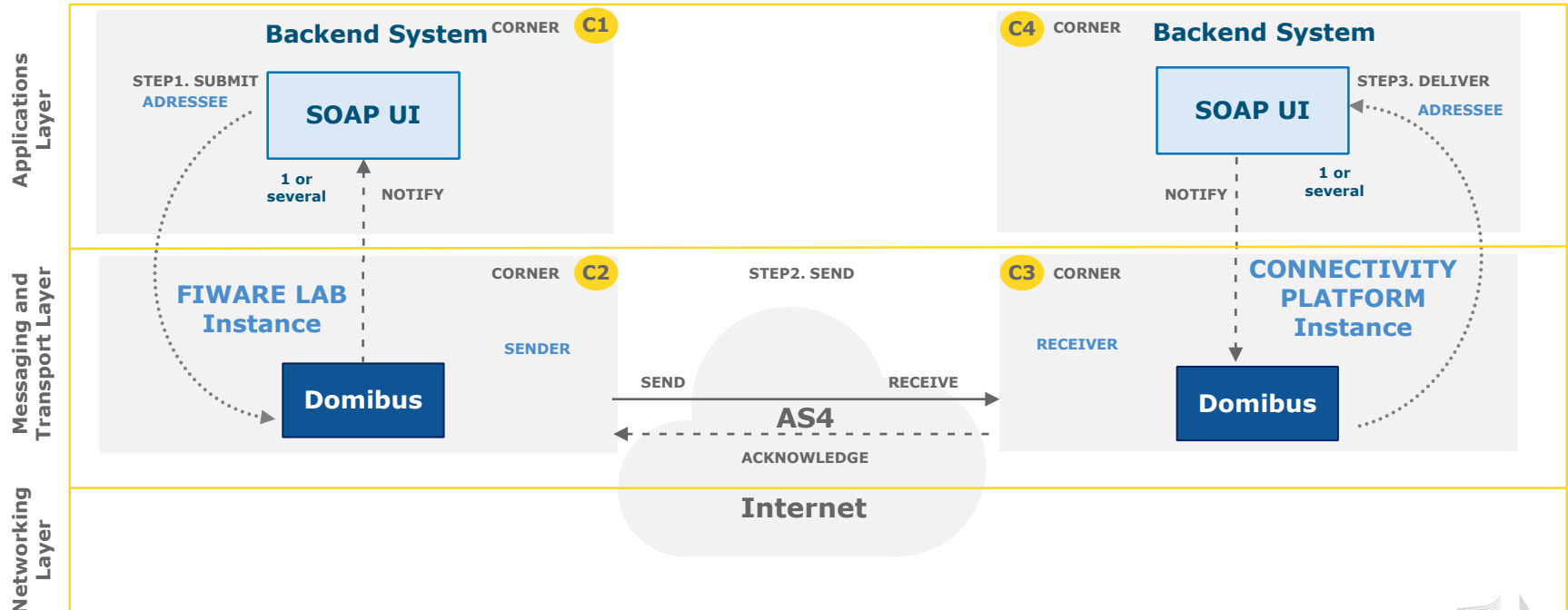
FIWARE

Lab

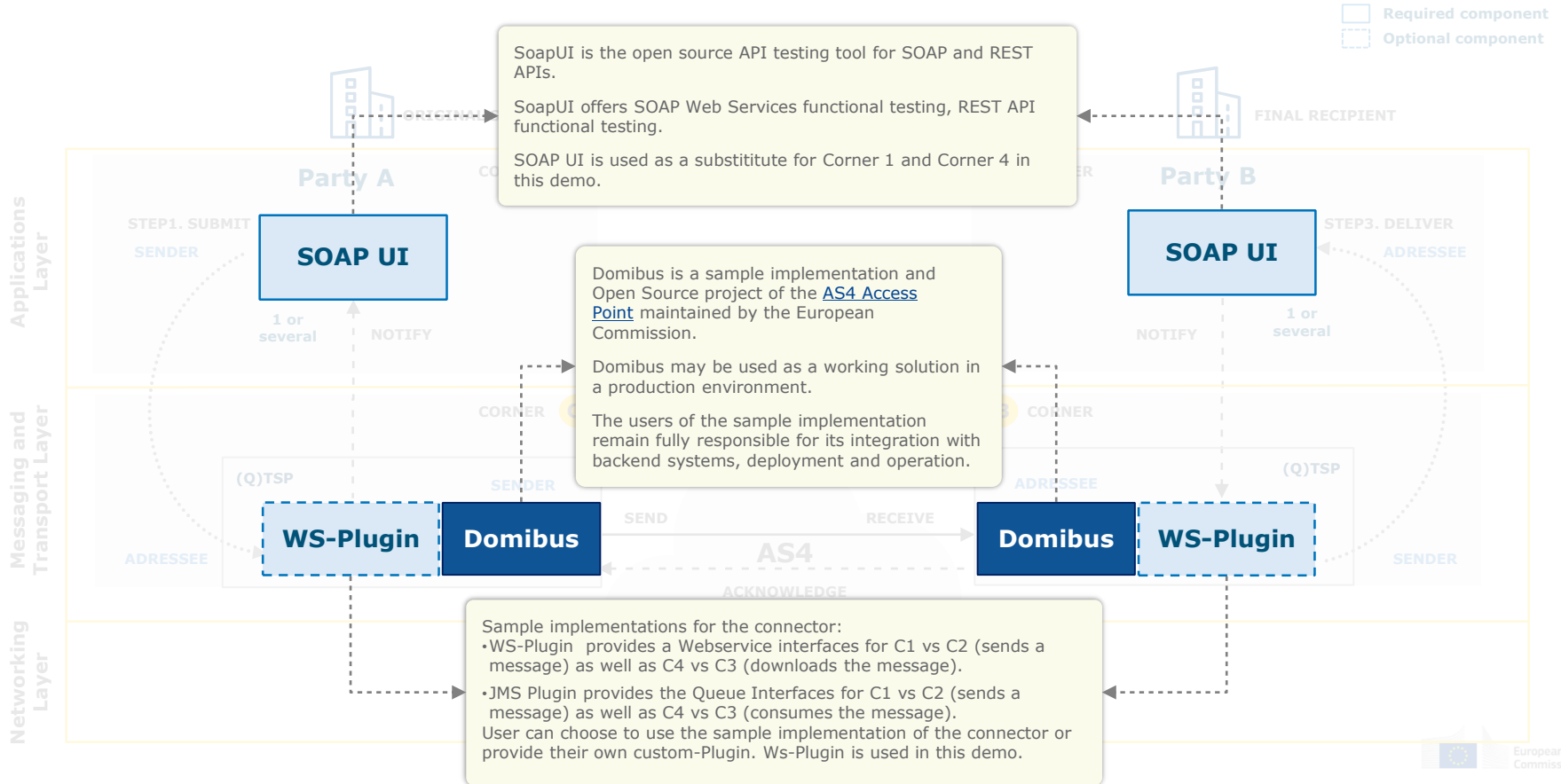


<https://www.fiware.org/lab/>

Demo in detail



Demo scenario



Demo Steps

DEMO TIME

Launch instance

FIWARE LAB Instance

- Launch an instance based on a public VM image on the FIWARE lab.

DEMO TIME

Configuration *(pre-configured)*

PMode File

- Configure the parties, endpoint URLs for the sending and receiving Access Points
- Configure compression, number of retries, etc.

Truststore .jks

- Configure the public certificate of the CTP

DEMO TIME

Runtime Scenario

Backend C1 sends the message to Access Point C2

The Message is sent from sender Access Point C2 to receiving Access Point C3

An acknowledgement is sent from C3 to C2

C4 downloads the message from C3

I. Launch instance

Image: **domibus-3.3.2**

II. Configuration

a. PMode Configuration

Configure Parties container

PMode[1].businessProcesses.parties.party: This parameter Contains the name of the partner Access Points and the address (endpoint URL) of the Receiver MSH to which User Messages under this PMode are to be sent.

PMode[1].businessProcesses.parties.party.Identifier: This Parameter contains the name of the clients' backend associated to the parent Access Point.

```
<party name="cefsupportgw"
  endpoint="http://40.115.23.114:8080/domibus/services/msh"
  allowChunking="false">
  <identifier partyId="cefsupportgw" partyIdType="partyTypeUrn"/>
</party>
<party name="ceftestparty9gw"
  endpoint="http://domibus.lab.firmware.org:8080/domibus/services/msh"
  allowChunking="false">
  <identifier partyId="ceftestparty8gw" partyIdType="partyTypeUrn"/>
</party>
```

b. Truststore upload

Truststore .jks file

Certificate Hierarchy:

 cefsupportgw

Version: 3

Subject: C=BE,O=eDelivery,CN=cefsupportgw 

Issuer: C=BE,O=eDelivery,CN=cefsupportgw 


Serial Number: 0x9877F2F02226A379


Valid From: 20/Jun/2017 17:20:42 EEST

Valid Until: 06/Sep/2025 17:20:42 EEST

Public Key: RSA 2048 bits 

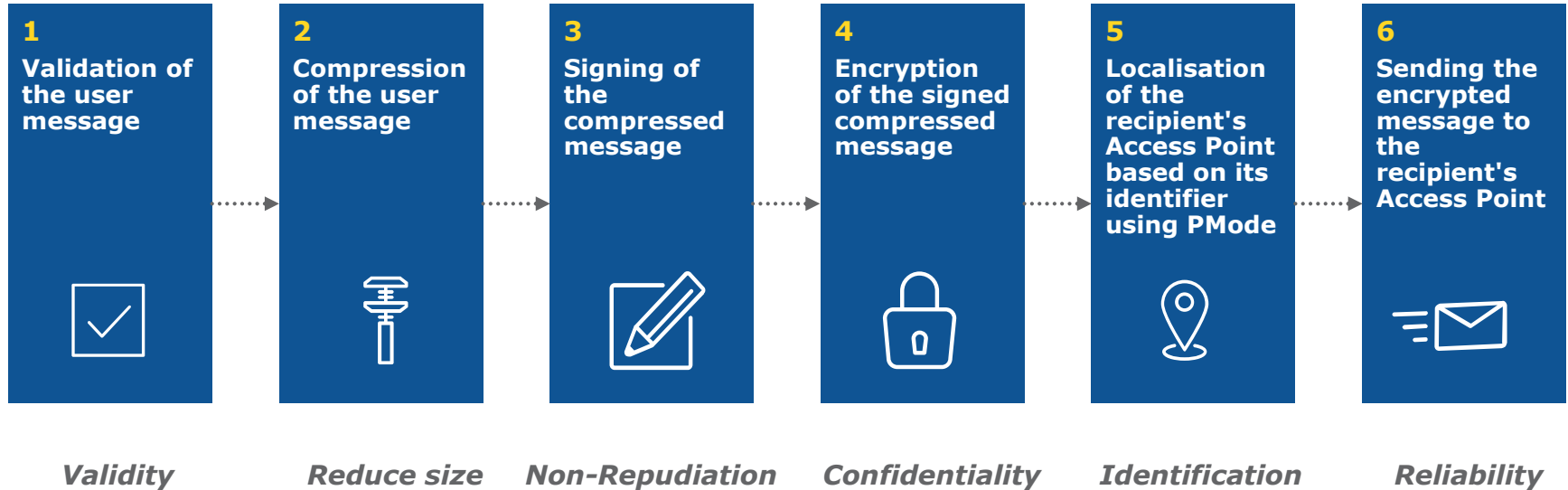
Signature Algorithm: SHA256WITHRSA

Fingerprint: SHA-1 

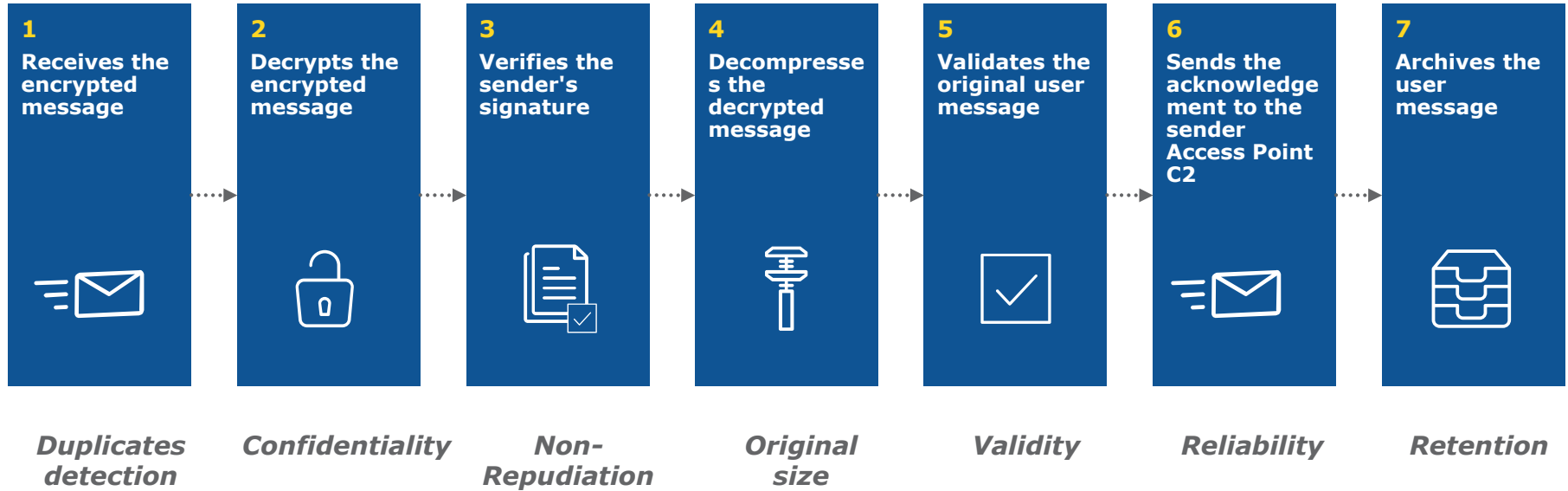
72:2A:E8:97:2C:5C:07:95:D4:CB:BB:B6:48:1B:36:04:78:7D: 

III. Run-time process

SEND: Processing at C2.



RECEIVE: Process at C3



Release 3.3

Specifications

- eDelivery AS4 Profile
- OASIS AS4 Profile
- ebMS3 Core

App servers

- Tomcat 8, WebLogic 12, Wildly 9

Databases

- MySQL, Oracle

Technologies

- SOAP 1.2 *with attachments*
- Apache CXF
- Apache WSS4J
 - WS-Security: *WSSSMA, WSSX509, WSSSWA,*
 - WS-Policy: *rsa-sha256, aes128-gcm, rsa-oaep, mgf1sha256*
- GZIP
- WS, JMS, FileSystem plugins

Anatomy of a message

```
<?xml version="1.0" encoding="utf-8"?>
<env:Envelope xmlns:env="http://www.w3.org/2003/05/soap-envelope">
  <env:Header>
    <eb:Messaging xmlns:eb="http://docs.oasis-open.org/ebxml-msg
  <eb:UserMessage mpc="http://docs.oasis-open.org/ebxml-msg           ...
    </eb:UserMessage>
  </eb:Messaging>
  <wsse:Security xmlns:wsse="http://docs.oasis-open.org/wss
    <xenc:EncryptedKey xmlns:xenc="http://www.w3.org/2001
      <xenc:EncryptionMethod Algorithm="http://www.w3.
        ...
      </xenc:EncryptedKey>
    <xenc:EncryptedData xmlns:xenc="http://www.w3.org/2001
      <xenc:EncryptionMethod Algorithm="http://www.w3.org/2009/xmlenc11#aes128-gcm"/>
        ...
      </xenc:EncryptedData>
    <ds:Signature xmlns:ds="http://www.w3.org/2000/09/xmldsig#"
      ...
    </ds:Signature>
  </wsse:Security>
</env:Header>
<env:Body/>
</env:Envelope>
```

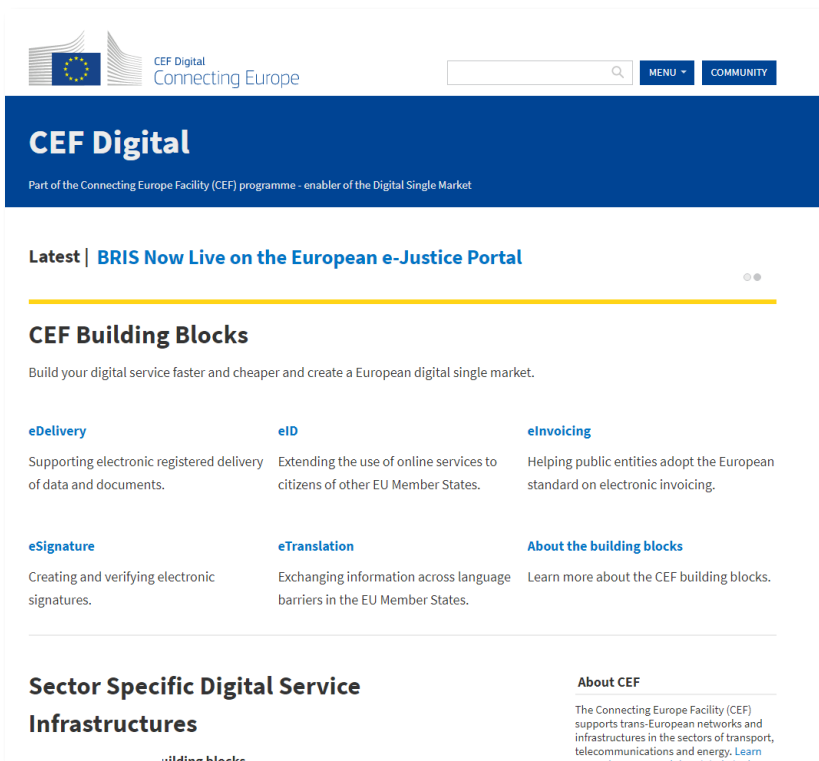
4

Q&A and sharing of experiences

All

Find out more on CEF Digital

ec.europa.eu/cefdigital



The screenshot shows the CEF Digital website interface. At the top left is the logo for CEF Digital, featuring the European Union flag and the text "CEF Digital Connecting Europe". To the right of the logo is a search bar and two buttons labeled "MENU" and "COMMUNITY". Below the header is a dark blue banner with the text "CEF Digital" and "Part of the Connecting Europe Facility (CEF) programme - enabler of the Digital Single Market". The main content area features a "Latest" section with the headline "BRIS Now Live on the European e-Justice Portal". Below this is a section titled "CEF Building Blocks" with the subtext "Build your digital service faster and cheaper and create a European digital single market." This section contains three columns of information: "eDelivery" (Supporting electronic registered delivery of data and documents), "eID" (Extending the use of online services to citizens of other EU Member States), and "eInvoicing" (Helping public entities adopt the European standard on electronic invoicing). Below these are "eSignature" (Creating and verifying electronic signatures), "eTranslation" (Exchanging information across language barriers in the EU Member States), and "About the building blocks" (Learn more about the CEF building blocks). At the bottom, there is a section for "Sector Specific Digital Service Infrastructures" and "About CEF" (The Connecting Europe Facility (CEF) supports trans-European networks and infrastructures in the sectors of transport, telecommunications and energy. Learn more about CEF Digital Building Blocks).

#BIG

REUSE

Contact us



CEF-BUILDING-BLOCKS@ec.europa.eu

© European Union, 2017. All rights reserved. Certain parts are licensed under conditions to the EU. Reproduction is authorized provided the source is acknowledged.