

Discovering EBSI

This document is meant for anyone who wishes to share news or knowledge about the European Blockchain Services Infrastructure. If you are a member of the Press, are involved in the project or are simply interested in this technology, you will find this guide useful to pass on EBSI's messages clearly and effectively.



What is EBSI?

The European Blockchain Services Infrastructure (EBSI) is a network of nodes set-up across Europe, since 2020. This infrastructure aims at leveraging blockchain technology to create cross-border services for the benefit of citizens, society, and the economy. **EBSI is the first EU-wide blockchain infrastructure driven by the public sector, in full respect of European values and regulations.**

A BIT OF HISTORY

Since 2018, 29 countries (all EU Member States, Norway and Lichtenstein) and the European Commission have joined forces to form the European Blockchain Partnership (EBP), committing to work together towards realising the potential of blockchain-based services in the EU. This Partnership is currently building the European Blockchain Services Infrastructure (EBSI), looking to use blockchain to create trustworthy cross-border services for public administrations and their ecosystems.

Our values



Public good:

EBSI must be used for the public good. As such, it will limit its usage to public and private services that improve the lives of citizens in all Member States.



Governance:

The EBSI governance system ensures that decisions are made by reaching a consensus amongst stakeholders.



Harmonisation:

EBSI governance should encourage the harmonisation of technical requirements and architecture, to prevent the proliferation of protocols or conflicting architectural assumptions.



Open source:

Wherever possible, the code-base for all EBSI services and structures should be open source to allow for maximal auditing, security, and healthy competition between service providers, vendors and other private-sector actors.



EU regulatory compliance:

EBSI must not only comply with, but model compliance with the GDPR, in addition to aligning with eIDAS and other regulations.

EBSI in numbers

€38M
Invested in 2021-2022

+300
contributors

29
countries

36+ nodes
and counting

EBSI Communication Guidelines

Our EBSI Mark

This is the EBSI mark. It is composed by the EBSI monogram and the acronym "ebsi" in a horizontal orientation. The text "ebsi" is represented in EC Square family typeface in black and written in lowercase letters.

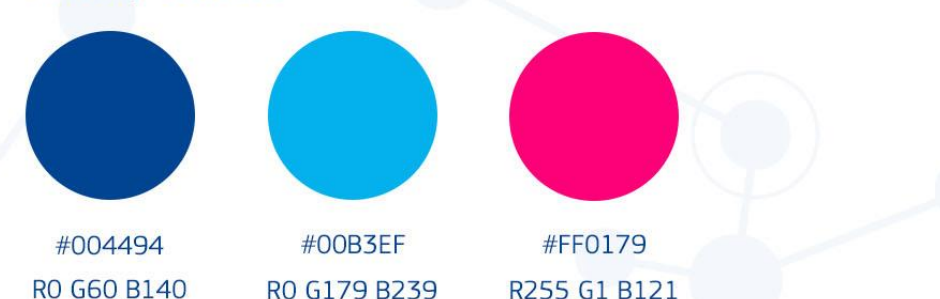


The colour palette

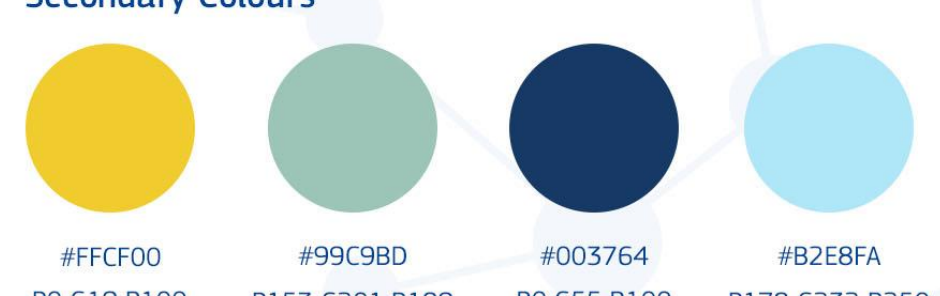
The colour palette consists of 3 primary colours: blue, light blue and pink.

Support colours are yellow, light green and night blue, all colours from the European Commission's palette as a nod to the main brand, and a clear blue for lighter designs.

Primary Colours

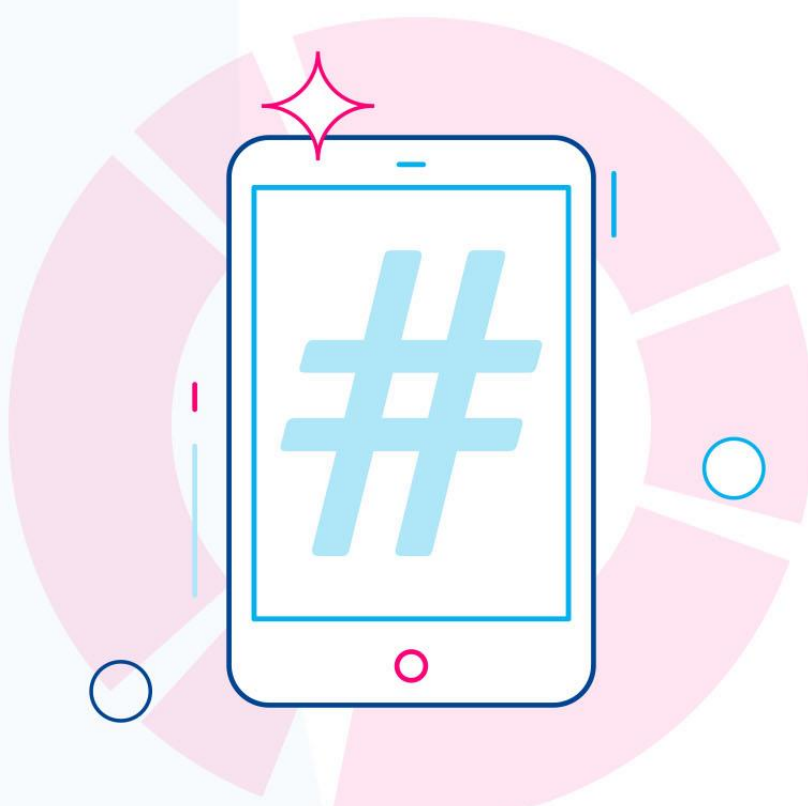


Secondary Colours



Our tone of voice

While the writing should show authority and knowledge in the area, it is also important to **maintain an inclusive and approachable tone of voice** that encourages the users to ask for assistance if necessary. To maintain accessibility, language should be kept simple.



Social media & hashtags we use

Using the correct hashtags on social media helps users find any content that is related to EBSI. When sharing or creating posts about EBSI, these are the ones we recommend you to use.

- #EBSI
- #EUBlockchain
- #EuropeanBlockchainServicesInfrastructure
- #EBSICommunity



Media library

DISCOVER EBSI

- EBSI Explained Series
- EBSI Success Stories

BUILD WITH EBSI

- EBSI VC Playbook
- EBSI Early Adopters Programme
- EBSI Developer Hub

LIBRARY

- EBSI Mark

Do you need any further information?

For more detailed information about EBSI, [visit our website](#) or contact us at: EU-EBSI@ec.europa.eu