



DIGITALISERINGSSTYRELSEN

eDelivery Perspectives in Denmark

6. december 2017

Sven Rostgaard Rasmussen



AGENDA

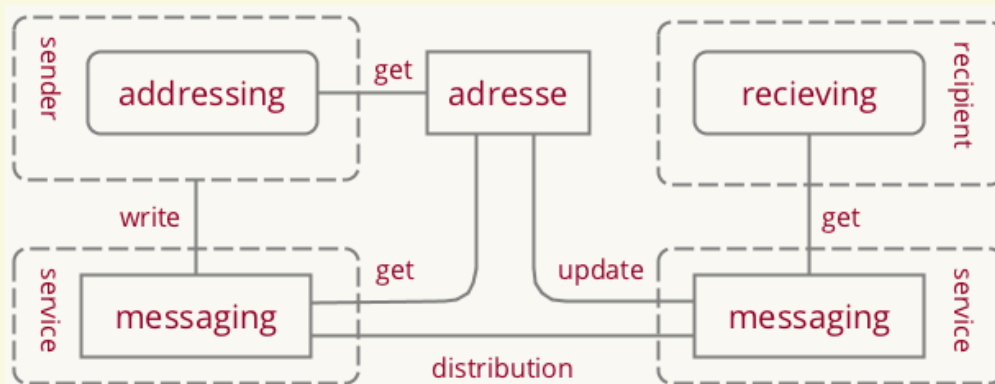
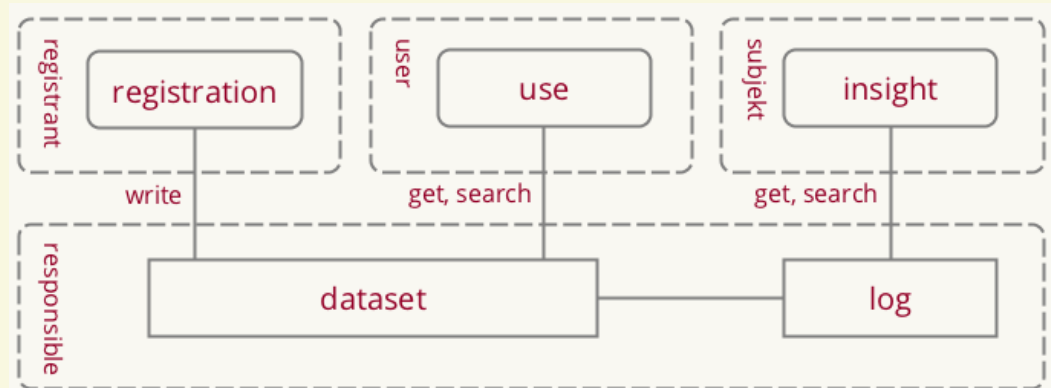
- **Current status of eDelivery in Denmark**
- **Interoperability and Architectural approach**
- **Possible use cases for further adoption**
- **Process forward**

CURRENT STATUS

- **eDelivery pre-study with major stakeholders has identified the potential for eDelivery as a general national infrastructure**
- **Many types of data sharing solutions and different technology for implementation and security is in use**
- **Limited adoption of eDelivery:**
 - PEPPOL eProcurement (Cross Border)
 - EU Cross Border project based implementations
- **Scheduled business cases analysis (2018 1H)**

INTEROPERABILITY AND ARCHITECTURE

- National Interoperability Framework aligned with EIRA
- Defined framework and reference architectures
- Reference Architecture for Data sharing
- Example patterns



POSSIBLE USE CASES FOR FURTHER ADOPTION

- **eDelivery has the potential to support increased automation of business processes needed for the digitisation process**
- **Focus on adoption as a generic infrastructure for sharing of data:**
 - System to system integration
 - Structured Data messages
 - Business process support and (semi) automatic processing
- **Use cases that are considered/planned:**
 - PEPPOL eProcurement for eInvoicing, eCatalogues and eOrders
 - Interconnections with Digital Post
 - Healthcare use cases with participation of municipalities and private actors

PROCESS FORWARD

- **eDelivery project planned with analysis phase in 2018 1H and following implementation for onboarding of initial use cases in 2019**
- **Organizational**
 - Establish Service Management and D2D operations
 - Establish community for stakeholder management
- **Technical topics**
 - Multiprotocol support: AS4 and profile for WS RESTful specification integrated with SMP and PKI security
 - Cross domain/boarder Trust Service (eIDAS)
 - Shared use of SML domain to facilitate Cross domain/boarder use

?