



EUROPEAN COMMISSION

DIRECTORATE-GENERAL INFORMATICS

AS4 Connectivity Test Procedure

© European Union, 2022

Reuse of this document is authorised provided the source is acknowledged. The Commission's reuse policy is implemented by Commission Decision 2011/833/EU of 12 December 2011 on the reuse of Commission documents.

Date: 16/05/2022

Document Approver(s):

Approver Name	Role
Bogdan DUMITRIU	Project Manager

Document Reviewers:

Reviewer Name	Role
Amar DEEP	eDelivery Support
Maarten DANIELS	Technical Office Team
Kopec GRZEGORZ	Technical Office Team

Summary of Changes:

Version	Date	Created by	Short Description of Changes
V0.1	25/02/2016	EDELMAN Cedric	Creation of the document
V1.0	07/03/2016	EDELMAN Cedric	Update of the document
V2.0	10/05/2016	EDELMAN Cedric	Update of the document based on Domibus 3.1 Final Release
V2.1	02/06/2016	EDELMAN Cedric	Update of the document based on the review of the Technical Office
V2.2	05/09/2016	EDELMAN Cedric	Update based on the Domibus 3.2 RC1
V2.3	29/06/2017	Chaouki BERRAH	Update based on Domibus 3.3
V2.4	04/09/2017	Chaouki BERRAH Caroline AEBY Amar DEEP	Add information concerning INEA grants Removed references about Domibus version number.
V2.5	21/09/2017	Chaouki BERRAH Caroline AEBY	Add reference to the AS4 Connectivity Test Procedure for Dynamic Discovery. Current doc only for AS4 conn static discovery.
V2.6	15/11/2017	Chaouki BERRAH	Static and Dynamic procedure merged procedures
V2.7	21/11/2017	Chaouki BERRAH	Update, after internal meeting
V2.8	23/11/2017	Chaouki BERRAH and Amar DEEP	Update and contents Review
V2.9	27/11/2017	Chaouki BERRAH	Figures updated.
V3.0	29/11/2017	Chaouki BERRAH	Update with review feedback.
V3.1	01/12/2017	Chaouki BERRAH	Update contact details
V3.2	02/02/2018	Chaouki BERRAH Caroline AEBY	Added information about difference between conformance and connectivity testing.
V3.3	20/03/2018	CEF Support	Reuse notice added
V3.4	26/09/2018	Caroline AEBY	No more standby service
V3.5	24/08/2020	Caroline AEBY	Admin guide Reference updated + broken link fixed
V3.6	23/11/2021	Chaouki BERRAH, Gowtham-Jegannath VAITHIAM-AMARNATH	Password comments updates.

V3.7	16/05/2022	Caroline AEBY	No more CEF references and eDel support address updated to EC-EDELIVERY
------	------------	---------------	-------------------------------------------------------------------------

Table of Contents

- 1. INTRODUCTION..... 4**
- 2. OVERVIEW OF THIS DOCUMENT 7**
- 3. STATIC DISCOVERY AS4 CONNECTIVITY REGISTRATION..... 8**
 - Step 1: Send a Registration Request to eDelivery Support8
 - Step 2: Registration details received from eDelivery Support9
- 4. DYNAMIC DISCOVERY AS4 CONNECTIVITY REGISTRATION 10**
 - 4.1. DYNAMIC DISCOVERY SCENARIO 1..... 11**
 - Step 1: Send a Registration Request to eDelivery Support11
 - Step 2: Registration details received from eDelivery Support12
 - 4.2. DYNAMIC DISCOVERY SCENARIO 2..... 13**
 - Step 1: Send a Registration Request to eDelivery Support13
 - Step 2: Registration details received from eDelivery Support14
 - Step 4 : Configure the SMP.....14
 - Step 5: Register the Access Point metadata into the SMP14
- 5. ACCESS POINT SETUP..... 15**
 - 5.1. General guidelines15
 - 5.1.1. Certificate configuration.....15
 - 5.2. Specific guidelines for Domibus.....15
 - 5.2.1. Certificate configuration.....15
 - 5.2.2. PMode configuration15
- 6. TESTING 16**
 - 6.1. General testing guidelines16
 - 6.2. Specific guidelines for Testing17
- 7. CONTACT INFORMATION..... 19**

1. INTRODUCTION

e-Delivery offers two different types of testing services:

- Connectivity Testing service: the goal is to test if a newly installed AS4 Access Point, conformant with the eDelivery specifications, can successfully communicate with the sample AS4 Access Point hosted by the European Commission or if a newly installed SMP server, conformant with the eDelivery specifications, can respond to sample requests. If successful, these tests confirm that the relevant component is in all likelihood correctly deployed and configured.

<https://ec.europa.eu/digital-building-blocks/wikis/display/DIGITAL/eDelivery+Connectivity+testing>

- Conformance Testing service: the goal is to verify that an implementation of the eDelivery Access Point and SMP specifications, a software package either commercial or Open Source, conforms to the eDelivery specifications.

<https://ec.europa.eu/digital-building-blocks/wikis/display/DIGITAL/eDelivery+Conformance+testing>

This document will only cover the connectivity testing service. It provides guidance on how Companies can test if a specific installation and configuration of a eDelivery conformant AS4 Access Point can effectively communicate with the Access Point implementation of the connectivity test platform.

This document covers both static and dynamic discovery testing.

The eDelivery team is facilitating this connectivity testing by deploying an AS4 conformant Access Point implementation using Domibus in a cloud environment and offering services and support to external parties.

The test involves the Participant's Access Point sending (and receiving from) messages to the European Commission AS4 Connectivity Test Access Point.

The **Static Discovery** procedure implies that the Participant Access Point is configured with the static address of the European Commission Access Point and vice versa. Figure 1 shows the process of sending and receiving the message.

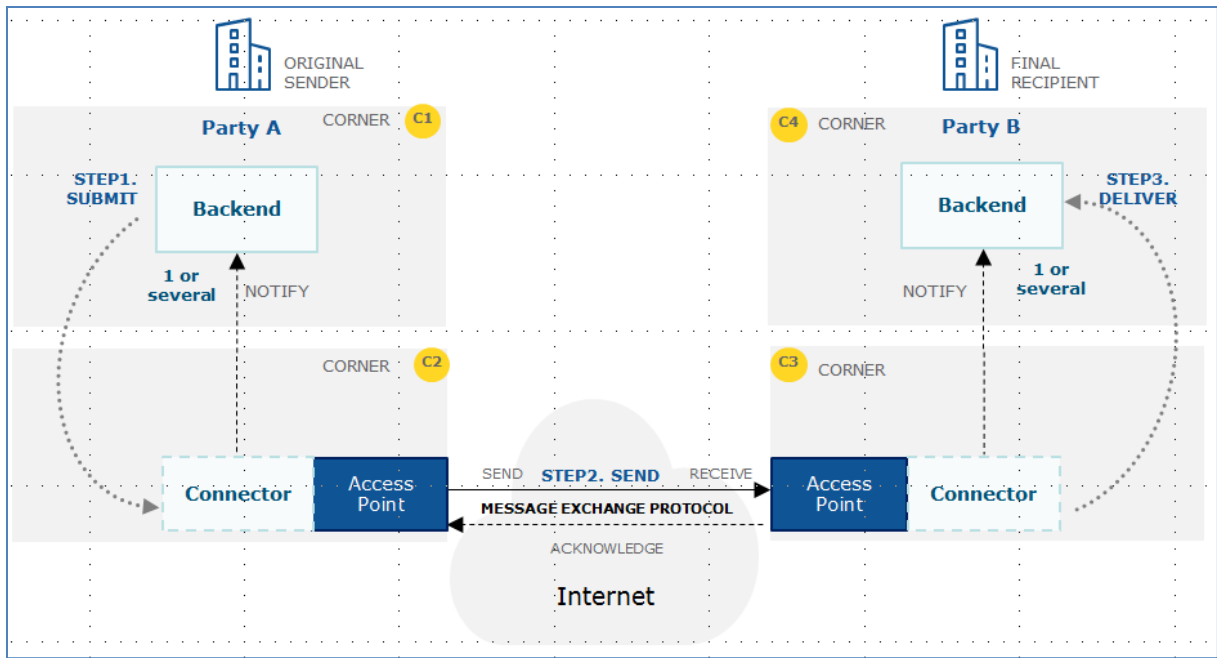


Figure 1. Static Discovery

The **Dynamic Discovery** procedure implies that each Participant Access Point must dynamically, during the message sending phase, obtain the Receiver Access Point address through a DNS and SMP lookup. The procedure also includes the use and configuration of the SMPs and SML (SMK) used. Figure 2 shows the process of sending and receiving the message using Dynamic Discovery via DNS, SML and the SMP.

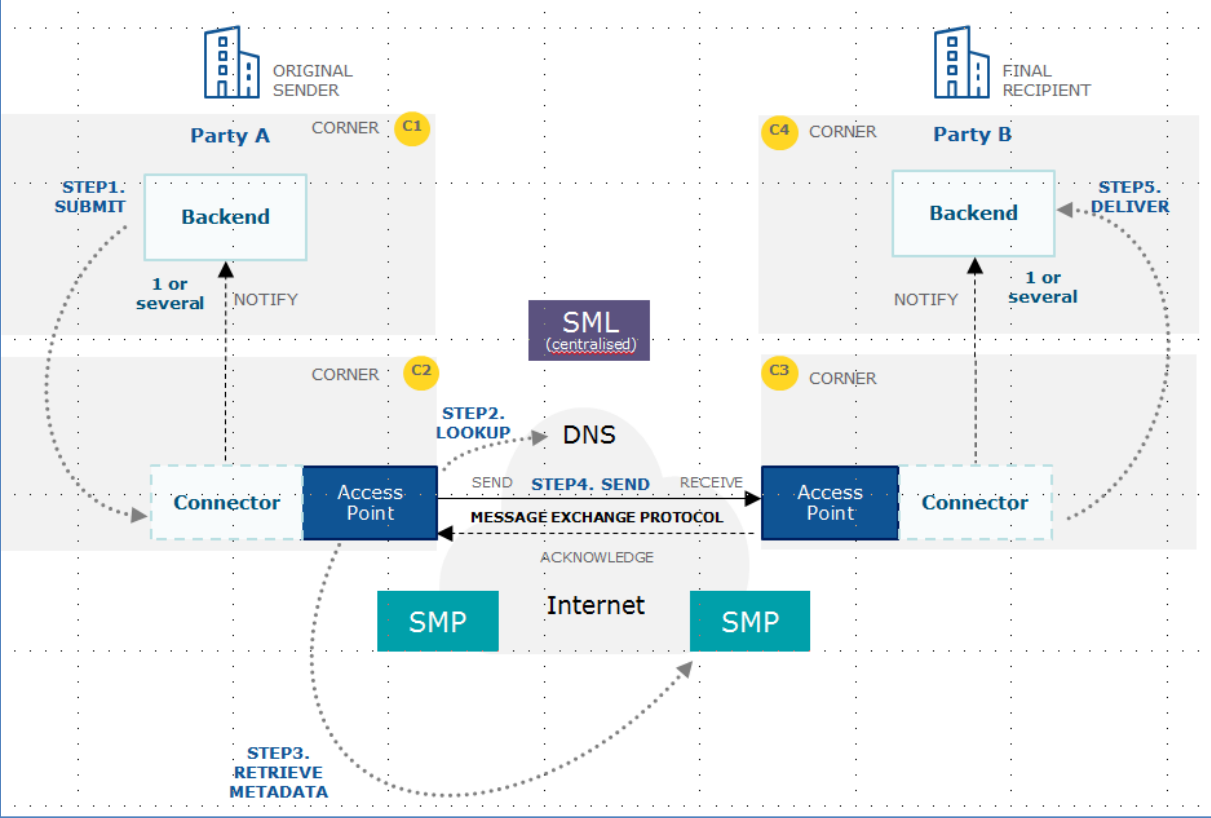


Figure 2. Dynamic Discovery

2. OVERVIEW OF THIS DOCUMENT

This document outlines the procedure and the detailed steps to be followed by connecting companies to:

- Register for the connectivity tests.
- Set up a eDelivery conformant Access Point for the connectivity tests.
- Test connectivity by sending and receiving a sample message to/from the connectivity test platform.
- Contact the eDelivery Support team in case of questions or issues during the connectivity test operation.

The document will provide general guidelines that can be used by companies or their IT providers to set up their components and send/receive the sample messages.

In addition to that, the document will also provide Domibus specific guidelines for those companies that are re-using the same eDelivery Access Point implementation as the connectivity test platform. Domibus can be downloaded via <https://ec.europa.eu/digital-building-blocks/wikis/display/DIGITAL/Domibus>.

It is important to note that the information in this document will be used for connectivity testing only. Although the aim of the connectivity test is to provide a fair level of assurance of connectivity, it is important to note that this specific setup can be different from a specific setup used in the production environment of a particular project. Examples of potential differences are as following:

- The Access Point for the connectivity test environment is not hosted in the same data centre as the production environment and where the SML is hosted.
- The Access Point version that can be used in production could use different technology stacks (e.g. Weblogic/Tomcat/Wildfly with Oracle/MySQL DBMS) from the version deployed in the connectivity test environment (Tomcat/Mysql).
- The sample request and response are not based on the same data model as the particular project.
- The PMode configurations are aligned with the eDelivery AS4 profile, but could be updated in the production environment (e.g. to take into account the correct service and action elements for a particular project).

The AS4 connectivity testing service offers the use of either **Static Discovery** or **Dynamic Discovery**. The participant should choose which one they wish to use depending on their needs.

The platform hosted by the European Commission uses a Domibus Access Point. Connecting companies can choose to connect via any other Access Point as long as it is conformant to the eDelivery AS4 profile. In the rest of this document, the term eDelivery Access Point refers to a conformant Access Point.

3. STATIC DISCOVERY AS4 CONNECTIVITY REGISTRATION

The **Static Discovery** procedure implies that the Participant Access Point is configured with the static address of the European Commission Access Point and vice versa.

Provide the information of your company's AS4 Access Point to the eDelivery Support team.

Step 1: Send a Registration Request to eDelivery Support

To initiate the process of connectivity testing between your Access Point and the test Access Point, send the information in the below format to the eDelivery Support team.

Static Discovery form:

Email To: EC-EDELIVERY-SUPPORT@ec.europa.eu

Subject: Static Discovery AS4 Connectivity test

Body:

Hello,

I am person [X] from company [Y], project [Z].

I am contacting you in the context of the AS4 connectivity.

Please find my requested details below and provide me with the certificates and configuration details.

Parameter	Value
Company Name	
AS4 Access Point Service URL	
The AS4 Gateway implementation (Holodeck, domibus, flame...)	
Are you performing the connectivity tests in the context of an INEA grant (Yes/No)? If Yes, please specify the DEP action number for the INEA grant (e.g.: 2015-NL-IA-XXXX).	
Business Domain (e.g.: EUCEG/ODR) (optional)	
Your technical team contact details, during connectivity tests.	Email: Telephone:

Best Regards, X

Step 2: Registration details received from eDelivery Support

As a response, you will receive an email with:

1. The **Certificate** for the Access Point (Truststore and Keystore).
2. The Endpoint URL of the test AS4 Access Point.
3. The **PMode settings**: This is the Domibus specific PMode XML file if Domibus is used. If another Access Point Software is used, this is a generic description of the PMode settings.
4. For Domibus only: A **SoapUI** Project to use for sending and receiving messages using the default WS plugin. It includes a "sendMessage" request for Static Discovery.

4. DYNAMIC DISCOVERY AS4 CONNECTIVITY REGISTRATION

The **Dynamic Discovery** procedure implies that each Participant Access Point must dynamically, during the message sending phase, obtain the Receiver Access Point address through a DNS and SMP lookup.

Dynamic Discovery involves the use of an SMP and the SML (called SMK in the testing environment) and is supporting the OASIS standards. . For more information, please refer to the SMP and SML documentation ¹.

For the purpose of the AS4 Connectivity Test Procedure, two test scenarios are available with Dynamic Discovery:

1- **Dynamic Discovery scenario 1:**

The user deploys an Access Point and wants to use the **SMP connectivity test server** deployed by **eDelivery Support**.

2- **Dynamic Discovery scenario 2:**

The user deploys an Access Point and an **SMP**, which is not yet registered in the **EC SML Acceptance** (or **SMK**).

¹ Information on dynamic discovery, SMP and SML can be found on: <https://ec.europa.eu/digital-building-blocks/wikis/display/DIGITAL/SML+specifications> and <https://ec.europa.eu/digital-building-blocks/wikis/display/DIGITAL/SMP+specifications>.

4.1. DYNAMIC DISCOVERY SCENARIO 1

Step 1: Send a Registration Request to eDelivery Support

To initiate the process of connectivity testing for this scenario, send the information in the below format to the eDelivery Support team.

Dynamic Discovery Scenario 1 form:

Email To: EC-EDELIVERY-SUPPORT@ec.europa.eu

Subject: Dynamic Discovery Scenario 1 AS4 Connectivity test

Body:

Hello,

I am person [X] from company [Y], project [Z].

I am contacting you in the context of the Dynamic Discovery Scenario 1 AS4 connectivity.

Please find my requested details below and provide me with the certificates and configuration details.

.

Parameter	Value
Company Name (CN)	
AS4 Access Point Service URL	
The AS4 Gateway implementation (Holodeck, domibus, flame...)	
Are you performing the connectivity tests in the context of an INEA grant (Yes/No)? If Yes, please specify the CEF action number for the INEA grant (e.g.: 2015-NL-IA-XXXX).	
Business Domain (e.g.: EUCEG/ODR) (optional)	
Your technical team contact details, during connectivity tests.	Email: Telephone:

Best Regards, X

Step 2: Registration details received from eDelivery Support

As a response, you will receive an email with:

1. The **Certificate** for the Access Point (Truststore and Keystore).
2. The **Participant ID, Participant Scheme, Document ID** and the **Document Scheme**.
3. The **PMode settings**: This is the Domibus specific PMode XML file if Domibus is used. If another Access Point Software is used, this is a generic description of the PMode settings.
4. For Domibus only: A **SoapUI** Project to use for sending and receiving messages using the default WS plugin. It includes a "sendMessage" request for Dynamic Discovery.
5. A User Guide with the detailed description of all the artefacts and information on set up of Access point.

4.2. DYNAMIC DISCOVERY SCENARIO 2

Prerequisites:

The user must have already deployed an SMP.

Step 1: Send a Registration Request to eDelivery Support

To initiate the process of connectivity testing for this scenario, send the information in the below format to the eDelivery Support team.

Dynamic Discovery Scenario 2 form:

Email To: EC-EDELIVERY-SUPPORT@ec.europa.eu

Subject: Dynamic Discovery Scenario 2 AS4 Connectivity test

Body:

Hello,

I am person [X] from company [Y], project [Z].

I am contacting you in the context of the Dynamic Discovery Scenario 2 AS4 connectivity.

Please find my requested details below and provide me with the certificates and configuration details.

Parameter	Value
Company Name	
AS4 Access Point Service URL	
SMP Endpoint URL	
The AS4 Gateway implementation (Holodeck, domibus, flame...)	
Are you performing the connectivity tests in the context of an INEA grant (Yes/No)? If Yes, please specify the CEF action number for the INEA grant (e.g.: 2015-NL-IA-XXXX).	
Business Domain (e.g.: EUCEG/ODR) (optional)	
Your technical team contact details, during connectivity tests.	Email: Telephone:

Best Regards, X

Step 2: Registration details received from eDelivery Support

As a response, eDelivery Support will **register your SMP in the SMK** under the connectivity test Domain.

You will then receive an email with:

1. The **Certificate** for the Access Point (Truststore and Keystore)
2. The **Participant ID, Participant Scheme, Document ID, Document Scheme** and the **SMP ID**
3. The **PMode settings**: This is the Domibus specific PMode XML file if Domibus is used. If another Access Point Software is used, this is a generic description of the PMode settings.
4. For Domibus only: A **SoapUI** Project to use for sending and receiving messages. It includes a "**sendMessage**" request for Dynamic Discovery.
5. The **Certificates** for your **SMP**.
6. **A User Guide**- with the detailed description of all the artefacts and information on set up of Access point and SMP.

Remark:

Step 4 and Step 5 are specific to eDelivery SMP. For other conformant implementations, please refer to the corresponding documentation.

Step 4 : Configure the SMP

Please refer to the [SMP Administration Guide](#) in section 5 "SMP Configuration".

- **SMP ID** Configuration: Use the SMP ID provided in the response email from eDelivery Support.
- **SML URL Configuration**: `regServiceRegistrationHook.regLocatorUrl=`
`https://acc.edelivery.tech.ec.europa.eu/edelivery-sml/manageparticipantidentifier.`
- **SML Acceptance Authentication**: Use the SMP Keystore provided by eDelivery Support.

Step 5: Register the Access Point metadata into the SMP

Please refer to the [SMP Administration Guide](#) in section 8 to create the required service group and register you Access Point Metadata in your SMP.

5. ACCESS POINT SETUP

5.1. General guidelines

Configure your AS4 Access Point using the details received in the connectivity registration response email.

Remark:

If Dynamic Discovery is used, make sure that the Access Point is configured for Dynamic Discovery operations.

5.1.1. Certificate configuration

[YourCompanyName].zip file contains your private key, certificate, keystore and truststore.

The password of the keystore and truststore is **test123**.

Update the certificate stores of your AS4 Access Point implementation with the relevant certificates.

5.2. Specific guidelines for Domibus

The guidelines described here are specific to Domibus and are not be valid when using other AS4 conformant Access point software.

Remark:

If Dynamic Discovery is used:

- Refer to Section 14 of the [Domibus Administration Guide](#) for specific configuration steps.
- Set **domibus.smlzone=connectivitytest.acc.edelivery.tech.ec.europa.eu** in the **domibus.properties** file.

5.2.1. Certificate configuration

[YourPartyName].zip file contains your private key, certificate, keystore and truststore.

The passwords for the keystore and truststore are set to **test123** for connectivity test purposes.

Put the keystore and truststore file in the location `.../domibus/conf/Domibus/keystores`.

Modify the **domibus-properties** file at location: `.../domibus/conf/domibus` as described in the [Domibus Administration Guide](#).

5.2.2. PMode configuration

Upload the PMode XML file to the Admin Console if you are running a Domibus AS4 instance.

6. TESTING

The goal of the AS4 connectivity testing is to verify whether Companies that want to connect via a specific installation and configuration of a conformant eDelivery Access Point can effectively communicate with the Access Point implementation of the connectivity test platform.

More specifically, this test scenario involves firstly the sending of a sample message from your AS4 Access Point of the connectivity test platform and secondly the receiving of a sample message from the AS4 Access Point of the connectivity test platform.

6.1. General testing guidelines

- Send the following XML file from your AS4 Access Point to the AS4 Access Point of the platform.

```
<?xml version="1.0" encoding="UTF-8"?>  
  
<Request>  
  
eDelivery AS4 Connectivity test. Sending Message  
  
</Request>
```

- Verify if your AS4 Access Point has correctly sent the message.
- Contact the eDelivery Support team by email indicating that the request message has been sent.
- The eDelivery Support team will check if the request has been correctly received and will verify its content.
- The eDelivery Support team will inform you about the status of the request and if positive, will send back the following XML file from the AS4 Access Point of the platform to your AS4 Access Point.

```
<?xml version="1.0" encoding="UTF-8"?>  
  
<Response>  
  
eDelivery AS4 Connectivity test conducted with success</ Response >
```

- Check your AS4 Access Point if the response message has been correctly received and verify its content.
- Inform the eDelivery Support team by email about the status of the response.
- If both the request and response message have been sent/received correctly, the connectivity test has been completed successfully.

6.2. Specific guidelines for Testing

If the default Domibus backend integration plugin is deployed in your AS4 Access Point installation, then the following procedure can be used. When using other AS4 conformant Access points, the procedure should be adapted accordingly.

- Import the SoapUI project that was provided in the connectivity registration response email.
- Expand **SendMessage** operation (under BackendService_1_1_SoapBinding). Edit the "from" PartyID according to your PMode data (it should be your PartyID provided in the mail).
- Submit the request (GREEN Button).
- Make a note of message id in the SoapUI response window (for example in our test case here **f7b96438-Odd9-4296-aeba-0da3be739d7@_@domibus.eu**).
- Your AS4 Access Point will now try to send the request to the AS4 Access point of the connectivity test platform.
- In the Admin Console of Domibus, check the most recent message under **Messages**.
- In our test case, the message with ID **f3d2edd1-911b-4e5f-847a-b7466f693366@domibus.eu** has **Message Status ACKNOWLEDGED**. This status means that your AS4 Access Point has correctly sent the message.

Message ID	Conversation ID	From Party ID	To Party ID	Message Status	Notification Status	AP Role	Message Type	Dated	Received	Send Attempts Max	Send Attempts	Final Po
f7b96438-0d9-4296-aeba-0da3be739d7@_@domibus.eu	38d8f7a-13d2-4e05-8e47-4686c511a1@domibus.eu	domibus-blue	domibus-end	ACKNOWLEDGED	NOTIFIED	SENDING	USER_MESSAGE	2017-04-08 18:22:30GMT+2	2017-04-08 18:22:30GMT+2	4	0	user:status
039d67b-74da-4d14-a11a-8759401412@domibus.eu	38d1121-8f8b-42aa-847a-9e679e2056@domibus.eu	domibus-blue	domibus-end	ACKNOWLEDGED	NOTIFIED	SENDING	USER_MESSAGE	2017-04-08 18:22:30GMT+2	2017-04-08 18:22:30GMT+2	4	0	user:status
a858a5c-750f-4d18-977b-7614a6d5240@domibus.eu	8548d2a-4c4c-48f6-9125-9a26a8f16469@domibus.eu	domibus-blue	domibus-end	ACKNOWLEDGED	NOTIFIED	SENDING	USER_MESSAGE	2017-04-08 18:22:30GMT+2	2017-04-08 18:22:30GMT+2	4	0	user:status
a6071b3-088c-4858-09c2da1197@domibus.eu	E38564f-0294-4250-a3e1-7c3d8a1a052@domibus.eu	domibus-blue	domibus-end	ACKNOWLEDGED	NOTIFIED	SENDING	USER_MESSAGE	2017-04-08 18:22:30GMT+2	2017-04-08 18:22:30GMT+2	4	0	user:status
a92a8ba-2066-4a16-aaee-7a77ac04122@domibus.eu	5a84901-3400-462-9974-4a6687782d@domibus.eu	domibus-blue	domibus-end	SEND_FAILURE	NOT_REQUIRED	SENDING	USER_MESSAGE	2017-03-21 15:55:20GMT+1		4	4	user:status
f16d2a9b-778c-4c7f-8a8b-18d234a600@domibus.eu	7874965-636c-41aa-8a03-980524611a8@domibus.eu	domibus-blue	domibus-end	RECEIVED	NOT_REQUIRED	RECEIVING	USER_MESSAGE	2017-06-13 09:30:00GMT+2		0	0	user:status
44078d1-7c73-498b-8a2c3a601307@domibus.eu	0718f4f-523a-478b-a804-a68404c479@domibus.eu	domibus-blue	domibus-end	ACKNOWLEDGED	NOTIFIED	SENDING	USER_MESSAGE	2017-04-08 18:22:30GMT+2	2017-04-08 18:22:30GMT+2	4	0	user:status
9d6d863-0327-4c16-8a8b-30c516b4d71@domibus.eu	9c18874-7367-4114-8285-a355a2c7729@domibus.eu	domibus-blue	domibus-end	ACKNOWLEDGED	NOTIFIED	SENDING	USER_MESSAGE	2017-04-08 18:18:09GMT+2	2017-04-08 18:18:09GMT+2	4	0	user:status
1a8d77b-4d11-4196-8314-3a80a16009@domibus.eu	38ba0c3-4a6b-4e15169-78d7c2a0877@domibus.eu	domibus-blue	domibus-end	ACKNOWLEDGED	NOTIFIED	SENDING	USER_MESSAGE	2017-04-08 18:22:30GMT+2	2017-04-08 18:22:30GMT+2	4	0	user:status
9a936db-8b2-484b-9182-ec4eaf2174e@domibus.eu	a10380c-0b29-4caf-a89c189611857@domibus.eu	domibus-blue	domibus-end	ACKNOWLEDGED	NOTIFIED	SENDING	USER_MESSAGE	2017-03-22 09:36:30GMT+1	2017-03-22 09:47:46GMT+1	4	3	user:status

- Contact the eDelivery Support team by email indicating that the request message has been sent.
- The eDelivery Support team will check if the request has been correctly received and will verify its content.
- The eDelivery Support team inform you about the status of the request and if positive, will send back the following XML file from the AS4 Access Point of the platform to your AS4 Access Point.

```
<?xml version="1.0" encoding="UTF-8"?>
<Response>
eDelivery AS4 Connectivity test conducted with success </ Response >
```

- Check your AS4 Access Point if the response message has been correctly received and verify its content.
- Inform the eDelivery Support team by email about the status of the response.
- If both the request and response messages have been sent/received correctly, the connectivity test has been completed successfully.

7. CONTACT INFORMATION

eDelivery Support Team

By email: EC-EDELIVERY-SUPPORT@ec.europa.eu

Support Service: 8am to 6pm (Normal EC working Days)