



# **eIDAS-Node National IdP and SP Integration Guide**

Version 2.0.1

## Document history

Version	Date	Modification reason	Modified by
1.0	16/10/2017	Origination	DIGIT
2.0	10/04/2018	Document rewritten particularly in relation to separation of Generic and Specific Parts.	DIGIT
2.0.1	19/04/2018	Correction to Figure captioning EID-609.  Corrected example of LightToken generation section 4.4.1 EID-611.	DIGIT

### Disclaimer

This document is for informational purposes only and the Commission cannot be held responsible for any use which may be made of the information contained therein. References to legal acts or documentation of the European Union (EU) cannot be perceived as amending legislation in force or other EU documentation.

The document contains a brief overview of technical nature and is not supplementing or amending terms and conditions of any procurement procedure; therefore, no compensation claim can be based on the contents of the present document.

## Table of contents

DOCUMENT HISTORY .....	2
TABLE OF CONTENTS .....	3
LIST OF FIGURES .....	5
LIST OF TABLES .....	6
LIST OF ABBREVIATIONS .....	7
LIST OF DEFINITIONS .....	8
1. INTRODUCTION .....	9
1.1. Purpose	9
1.2. Document aims .....	9
1.3. Document structure .....	9
1.4. Other technical reference documentation .....	9
2. THE CEF EID BUILDING BLOCK .....	11
2.1. CEF eIDAS-Node software .....	11
2.2. Architecture of a typical eID solution .....	12
3. DESIGNING INTEGRATION .....	15
3.1. eIDAS-Node Connector and eIDAS-Node Proxy Service in one application instance .....	15
3.2. Deployment models .....	15
3.2.1. Standard Deployment method .....	15
3.2.2. Monolithic Deployment method .....	16
3.3. Required profile and flows .....	16
3.3.1. High level flow .....	16
3.4. Requirements from MS .....	18
4. INTEGRATION POSSIBILITIES .....	20
4.1. Provided stack .....	20
4.2. Using the provided SpecificCommunication API .....	21
4.2.1. Use of LightTokens .....	23
4.2.2. Use of LightRequest/LightResponse .....	24
4.2.3. Service interface and implemented beans .....	27
4.2.4. Back-end communication with Hazelcast .....	29
4.2.5. Back-end communication with alternative to Hazelcast .....	29
4.2.6. Back-end communication in Monolithic Deployment .....	30
4.3. Re-implementing SpecificCommunication .....	30
4.4. Integrating the provided Generic with custom implementation of communication .....	30
4.4.1. Implementing the LightToken .....	31
4.4.2. Implementing LightRequest / LightResponse .....	33
APPENDIX A. DIAGRAMS AND SCHEMAS .....	40
A.1 Attribute Registry .....	40
A.1.1 Hard coded attributes .....	41
A.1.2 Class related attribute registries .....	42

A.2	XSD schemas for Light objects .....	44
A.2.1	LightRequest schema .....	44
A.2.2	Light Response schema .....	46

## List of figures

Figure 1: Architecture of a typical eID solution with MS IAM.....	13
Figure 2: Architecture of a cross-border-only service .....	14
Figure 3: High level flows .....	17
Figure 4: Delivery structure with dependencies .....	20
Figure 5: Standard Deployment – possible component layout .....	21
Figure 6: Simplified control flow .....	22
Figure 7: Interfaces and implementing classes in EIDAS-LightCommons.....	24
Figure 8: LightResponse properties .....	26
Figure 9: SpecificCommunicationService interface .....	27
Figure 10: SpecificCommunicationService.....	28
Figure 11: Basic component layout for Monolithic Deployment .....	30
Figure 12: Integrating the provided Generic with custom implementation of communication .....	31
Figure 13: XML LightRequest schema.....	34
Figure 14: Simplified XML LightResponse schema .....	36
Figure 15: Classes related to basic attribute registry .....	42
Figure 16: Attribute registry values.....	43
Figure 17: Attribute registry value marshalling.....	43

## List of tables

Table 1: Generic redirect URLs .....	23
Table 2: Specific redirect URLs .....	23
Table 3: LightRequest properties .....	24
Table 4: LightToken operations .....	28
Table 5: Hazelcast shared maps .....	29
Table 6: LightToken format.....	31

## List of abbreviations

The following abbreviations are used within this document.

<b>Abbreviation</b>	<b>Meaning</b>
eIDAS	electronic Identification and Signature. The <a href="#">Regulation (EU) N°910/2014</a> governs electronic identification and trust services for electronic transactions in the internal market to enable secure and seamless electronic interactions between businesses, citizens and public authorities.
IAM	Identity and Access Management.
IdP	Identity Provider. An institution that verifies the citizen's identity and issues an electronic ID.
LoA	Level of Assurance (LoA) is a term used to describe the degree of certainty that an individual is who they say they are at the time they present a digital credential.
MW	Middle Ware. Architecture of the integration of eIDs in services, with a direct communication between SP and the citizen's PC without any central server. The term also refers to the piece of software of this architecture that executes on the citizen's PC.
MS	Member State
SAML	Security Assertion Markup Language
SAT	Solution Architecture Template
SP	Service Provider

## List of definitions

The following definitions are used within this document.

<b>Term</b>	<b>Meaning</b>
Basic Setup	The basic configuration and Demo tools provided in a package to setup and run an eIDAS-Node strictly for demo purposes only.
Demo tools	Demo tools comprise the Demo SP and Demo IDP included in the package. These components are not production ready and should not be deployed or used in production environments.
eIDAS-Node	An eIDAS-Node is an application component that can assume two different roles depending on the origin of a received request. See eIDAS-Node Connector and eIDAS-Node Proxy Service.
eIDAS-Node Connector	The eIDAS-Node assumes this role when it is located in the <b>Service Provider's</b> Member State. In a scenario with a Service Provider asking for authentication, the eIDAS-Node Connector receives the authentication request from the Service Provider and forwards it to the eIDAS-Node of the citizen's country. This was formerly known as S-PEPS.
eIDAS-Node Proxy Service	The eIDAS-Node assumes this role when it is located in the <b>citizen's</b> Member State. The eIDAS-Node Proxy Service receives authentication requests from an eIDAS-Node of another MS (their eIDAS-Node Connector). The eIDAS-Node Proxy-Service also has an interface with the national eID infrastructure and triggers the identification and authentication for a citizen at an identity and/or attribute provider. This was formerly known as C-PEPS.



## 1. Introduction

This document is intended for a technical audience consisting of architects, developers, and those requiring detailed technical information on how an eIDAS-Node can be integrated into the National eID infrastructure.

### 1.1. Purpose

The purpose of this document is to describe how Member States can integrate the eIDAS-Node into their national infrastructure, which can be done in a number of ways.

This document provides guidance by recommending one way in which it can be done.

### 1.2. Document aims

The aims of this document are to:

- provide details of how to develop and tailor the parts that are specific to your country (Specific parts);
- describe implementation into web-based infrastructure; and
- provide information on the Protocol Engine architecture which is at the heart of all protocol related operations in the eIDAS-Node.

### 1.3. Document structure

This document is divided into the following sections:

- Chapter 1 – Introduction this section.
- Chapter 2 – *The CEF eID Building Block* describes interoperability aspects of the of CEF eID.
- Chapter 3 – *Designing integration* describes considerations of the CEF eIDAS-Node physical architecture to be taken into account when developing your integration strategy.
- Chapter 4 – *Integration possibilities* describes the recommended integration approaches, starting with that requiring the least changes.
- Appendix A – *Diagrams* contains diagrams covering some parts of the software architecture that are mentioned in this document.

### 1.4. Other technical reference documentation

We recommend that you also familiarise yourself with the following eID technical reference documents (as appropriate to your role) which are available on **CEF Digital Home > eID > All eID services > eIDAS Node integration package > eIDAS-Node software releases > Current release**:

- *eIDAS-Node Installation, Configuration and Integration Quick Start Guide* describes how to quickly install a Service Provider, eIDAS-Node Connector, eIDAS-Node Proxy Service and IdP from the distributions in the release package.

The distributions provide preconfigured eIDAS-Node modules for running on each of the supported application servers.

- *eIDAS-Node Installation and Configuration Guide* describes the steps involved when implementing a Basic Setup and goes on to provide detailed information required for customisation and deployment.
- *eIDAS-Node Demo Tools Installation and Configuration Guide* describes the installation and configuration settings for Demo Tools (SP and IdP) supplied with the package for basic testing.
- *CEF eID eIDAS-Node and SAML* describes the W3C recommendations and how SAML XML encryption is implemented and integrated in eID. Encryption of the sensitive data carried in SAML 2.0 Requests and Assertions is discussed alongside the use of AEAD algorithms as essential building blocks.
- *eIDAS-Node Error and Event Logging* provides information on the eID implementation of error and event logging as a building block for generating an audit trail of activity on the eIDAS Network. It describes the files that are generated, the file format, the components that are monitored and the events that are recorded.
- *eIDAS-Node Security Considerations* describes the security considerations that should be taken into account when implementing and operating your eIDAS-Node scheme.
- *eIDAS-Node Error Codes* contains tables showing the error codes that could be generated by components along with a description of the error, specific behaviour and, where relevant, possible operator actions to remedy the error.

Other useful resources on eID, eIDAS and how the CEF eID Building Block can be used while preserving all the characteristics and qualities that makes it a Building Block (e.g.: sustainability, reusability and replaceable parts):

- **What is eID?** helps understanding of the need and purpose of eID – <https://ec.europa.eu/cefdigital/wiki/display/CEFDIGITAL/What+is+eID>).
- **SAT for eID** and supporting links will help to understand the architectural framework that supports the CEF eID Building Block – <https://joinup.ec.europa.eu/release/eid-sat/v101>.

## 2. The CEF eID Building Block

The CEF eID Building Block helps public administrations and private online service providers to extend the use of their online services to citizens from other EU Member States by enabling **cross-border authentication**, in a secure, reliable and trusted way, by making national electronic identification systems interoperable.

Once this Building Block is deployed in a Member State, the mutual recognition of national eIDs becomes possible between participating Member States, in line with the eIDAS (electronic Identification and Signature) legal framework and with the privacy requirements of all the participating countries. Mutual recognition of national eIDs allows citizens of one Member State to access online services provided by public and private organisations of other participating Member States, using their own national eID.

The advantages of adopting this approach are:

- Sustainability;
- Greater Security;
- Better Scalability; and
- More Flexibility.

The CEF eID Building Block is primarily intended for authentication proxying and is not intended for authorisation, document transfers, etc.

### 2.1. CEF eIDAS-Node software

The eIDAS-Node software is a sample implementation of the eID eIDAS Profile. It is developed by the European Commission with the help of Member States collaborating in the technical sub-committee of the eIDAS Expert Group. The eIDAS-Node software contains the necessary modules to help Member States to communicate with other eIDAS-compliant counterparts in a centralised or distributed fashion.

The sample implementation is composed of the following:

- **eIDAS-Node**: an implementation of the eID eIDAS Profile able to communicate with other nodes of the eIDAS Network. The eIDAS-Node can either request (via an eIDAS-Node Connector) or provide (via an eIDAS-Node Proxy Service) cross-border authentication;
- **Testing tools (demo Service Provider and demo Identity Provider)**: additional tools for setting up a demo environment for testing purposes.

**Note:** The testing tools should be used for testing purposes only and should not be deployed in a production environment.

Each eIDAS-Node Connector and eIDAS-Node Proxy Service consists of two parts:

- Generic part; and
- Specific part.

## **Generic part**

A sample implementation of the Generic part, conforming to the eIDAS Technical Specifications, is developed by DIGIT and provided by the CEF eID programme. Code in the Generic part (modules eIDAS-Node, eIDAS-Metadata, eIDAS-SAMLEngine) is developed to communicate with other eIDAS-Nodes in other Member States (Connectors and Proxy Services) using the strictly defined eIDAS protocol. This ensures compatibility and interoperability between eIDAS-Nodes in the eIDAS network.

## **Specific part**

The Specific part is **designed and implemented by individual Member States** to suit their specific national requirements. This custom Specific part communicates with the Generic part by defined interfaces.

This separation of functionality between the Generic part and the Specific part defines a clear domain boundary and provides independence where, for example, Service Providers are not aware of the technology used in cross-border transactions.

Because of this separation, some functions that are required by the Interoperability Specifications must be implemented by Member States in their Specific part (or in the Member State 'Hub', see Figure 1), these are:

- MS Selection provided by the Connector solution; and
- Scheme selection provided by the Proxy Service solution.

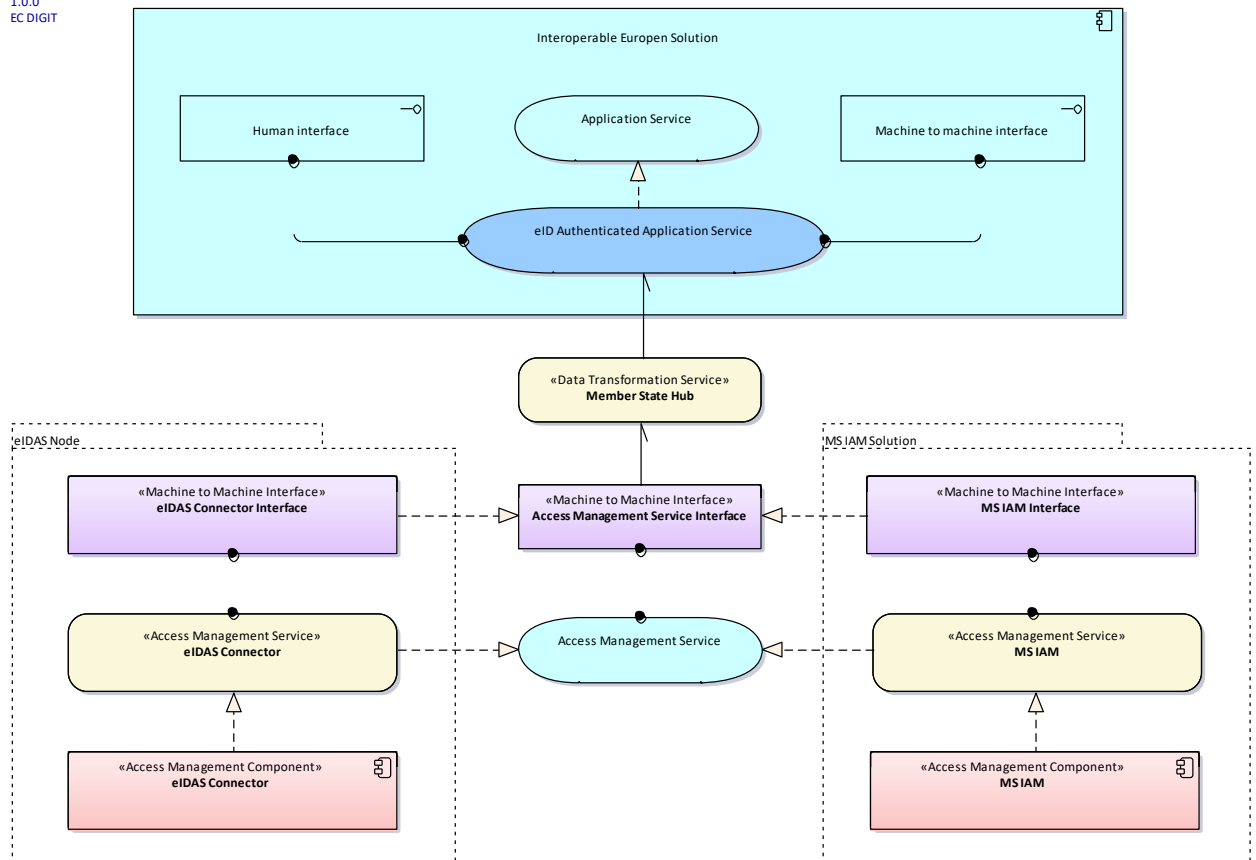
**Note:** The integration package includes a sample Specific part for demonstration only. This is not production-ready and should not be seen as a template for how functionality should be implemented.

**Disclaimer:** The users of the eIDAS-Node sample implementation remain fully responsible for its integration with back-end systems (Service Providers and Identity Providers), testing, deployment and operation. The support and maintenance of the sample implementation, as well as any other auxiliary services, are provided by the European Commission according to the terms defined in the [European Union Public Licence](#) (EUPL).

## **2.2. Architecture of a typical eID solution**

The following diagram, based on eID Solution Architecture Template (SAT 1.0.1), illustrates the application level approach for a typical eID/authentication solution.

Name: eID SBB - Technical View - Application  
 Package: eID SAT  
 Version: 1.0.0  
 Author: EC DIGIT



**Figure 1: Architecture of a typical eID solution with MS IAM**

This is a very high level ArchiMate® abstract, introducing only a concept, and not the physical level solution.

The packaging component (Interoperable European Solution) implements an Application Service using eID Authentication, therefore realising an eID Authenticated Application Service.

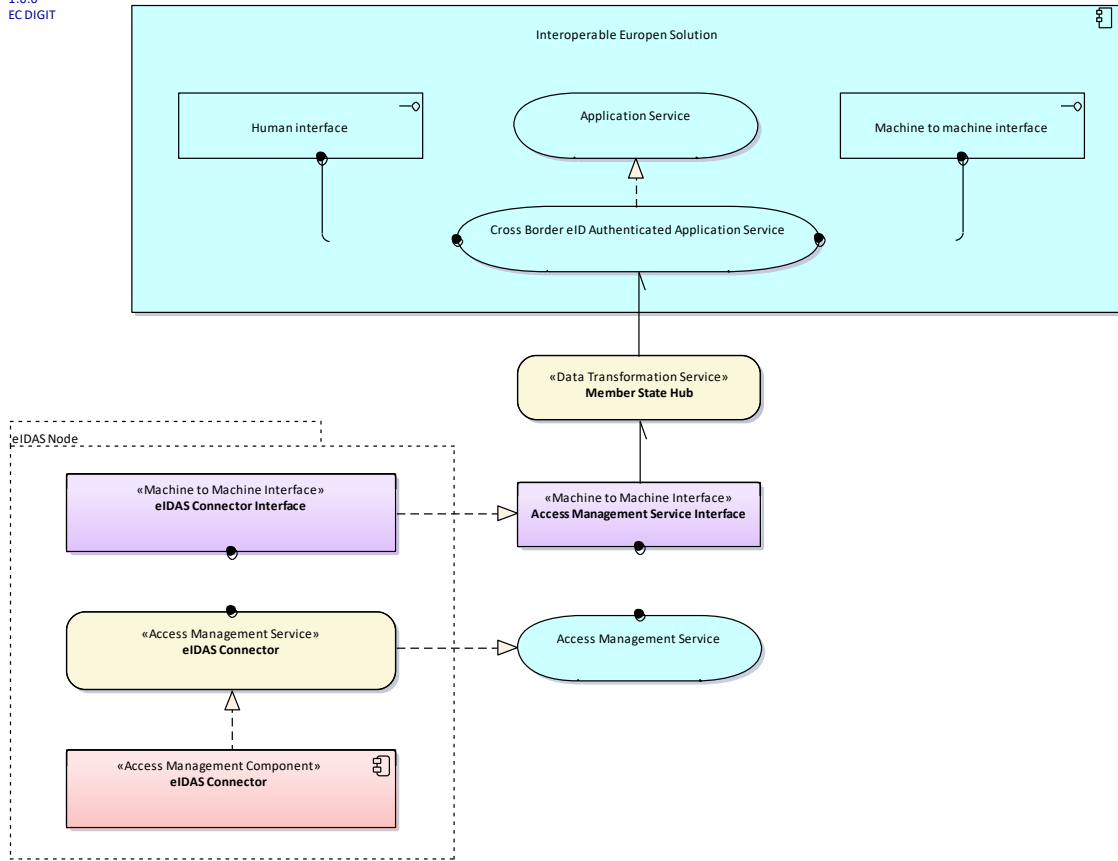
For example, opening a bank account requires identification of the person, which can be done with eID-based authentication. For the above architecture, strictly for the authentication (so not including any other processes like Anti-Money-Laundering) it is indifferent to whether the eID is local or foreign. The solution (like the online bank account) uses the local authentication ecosystem offered by eGovernment services.

This is the Member State Hub responsible for hiding the cross-border nature, but making the necessary conversion and routing between the two different implementations: eIDAS-Node Connector and (the existing) government Identity and Access Management (IAM) services. The Member State Hub is abstract, it is not necessarily a physical component, it is a service (composed of functions like the conversion and routing), that can be centralised or decentralised.

The important message from this diagram is the concept that eIDAS cross-border authentication is an alternative to the locally provided IAM services.

Reducing the solution to a cross-border-only service scenario results in this diagram:

Name: Cross-Border eID SBB - Technical View - Application  
 Package: eID SAT  
 Version: 1.0.0  
 Author: EC DIGIT



**Figure 2: Architecture of a cross-border-only service**

### 3. Designing integration

There are multiple ways the CEF eIDAS-Node can be integrated with a national network. Before going into detail, there is a need to understand the architecture of the system and set the integration strategy accordingly. Therefore this section describes the general architecture considerations.

#### 3.1. eIDAS-Node Connector and eIDAS-Node Proxy Service in one application instance

The delivered or custom built `EidasNode.war` web application contains the functionality of both eIDAS-Node Connector and eIDAS-Node Proxy Service. The roles are activated by configuration. It is possible to have both roles activated in one application instance (as shown in the Basic Setup) though this is not recommended and it is better to have two different instances for the following main reasons:

- the roles are very different, and since the eIDAS-Node Proxy Service issues identities, the security level is higher;
- besides the security level, uptime and business continuity requirements will be different, especially if bilaterally agreed; and
- there can be, and most likely there will be, multiple eIDAS-Node Connectors in the future for different purposes and sectors.

#### 3.2. Deployment models

There are two deployment methods supported:

- Standard deployment; and
- Monolithic deployment.

##### 3.2.1. Standard Deployment method

The Standard Deployment is the recommended approach for most Member States because it offers more flexibility. This is the default build target for the provided MAVEN Project Object Model.

Using the Standard Deployment the eIDAS-Node is built as a separate, independent, ready-to-use web application, that can be deployed directly. In this deployment model the Specific part may not exist at all, as the Node can be integrated closely to a domestic identity management infrastructure. There are several advantages of choosing this method:

- It is platform independent, using the provided Hazelcast technology stack (an alternative to Hazelcast can be used, see section 4.2.5 – *Back-end communication with alternative to Hazelcast* although reconfiguration and repackaging will be required). Integration with C++, .NET or custom infrastructure is also possible.
- Seamless upgrade to new versions. Upgrade of minor eIDAS-Node versions, where the interface does not change does not impact MS' Specific or infrastructure. Compatibility with major version change may also be better, just needing to adjust the background data communication.

- Impact of Java library dependencies is less in case of reusing some of the provided and supported libraries (like EIDAS-Commons), and may not exist at all if integrating with XML directly.

### 3.2.2. Monolithic Deployment method

The Monolithic Deployment is similar to the architecture delivered in CEF eIDAS Node v1.4 and earlier versions. The Specific application parts (Specific Connector and Specific Proxy Service) are built as part of the application, as included JAR files. However the communication interface is the same as in the Standard Deployment. By default the Monolithic Deployment method results in a non-distributed application at the communication interface level, as the communication cache does not default to a shared map, it uses internal memory cache. However it can be changed by editing the Maven build profile.

The Monolithic Deployment method is offered for testing and familiarisation but can be useful for those who plan to operate the eIDAS-Node as one standalone application, and accept the following restrictions:

- All Java libraries included in the Generic part are also dependencies of the Specific, so upgrade or replacement possibilities are very limited.
- Any change in these commonly used libraries introduced in future CEF eIDAS releases forces the implementer to do an impact analysis, and to take the necessary actions before upgrading.
- Overall performance of the application is dependent on Specific implementation, therefore CEF eID support possibilities may be limited.
- Troubleshooting and problem solving by CEF eID Team is limited. All incidents must be investigated locally to make sure, only those issues are being escalated to CEF eID support, that originate from the CEF provided software, and not the customised or added parts.

## 3.3. Required profile and flows

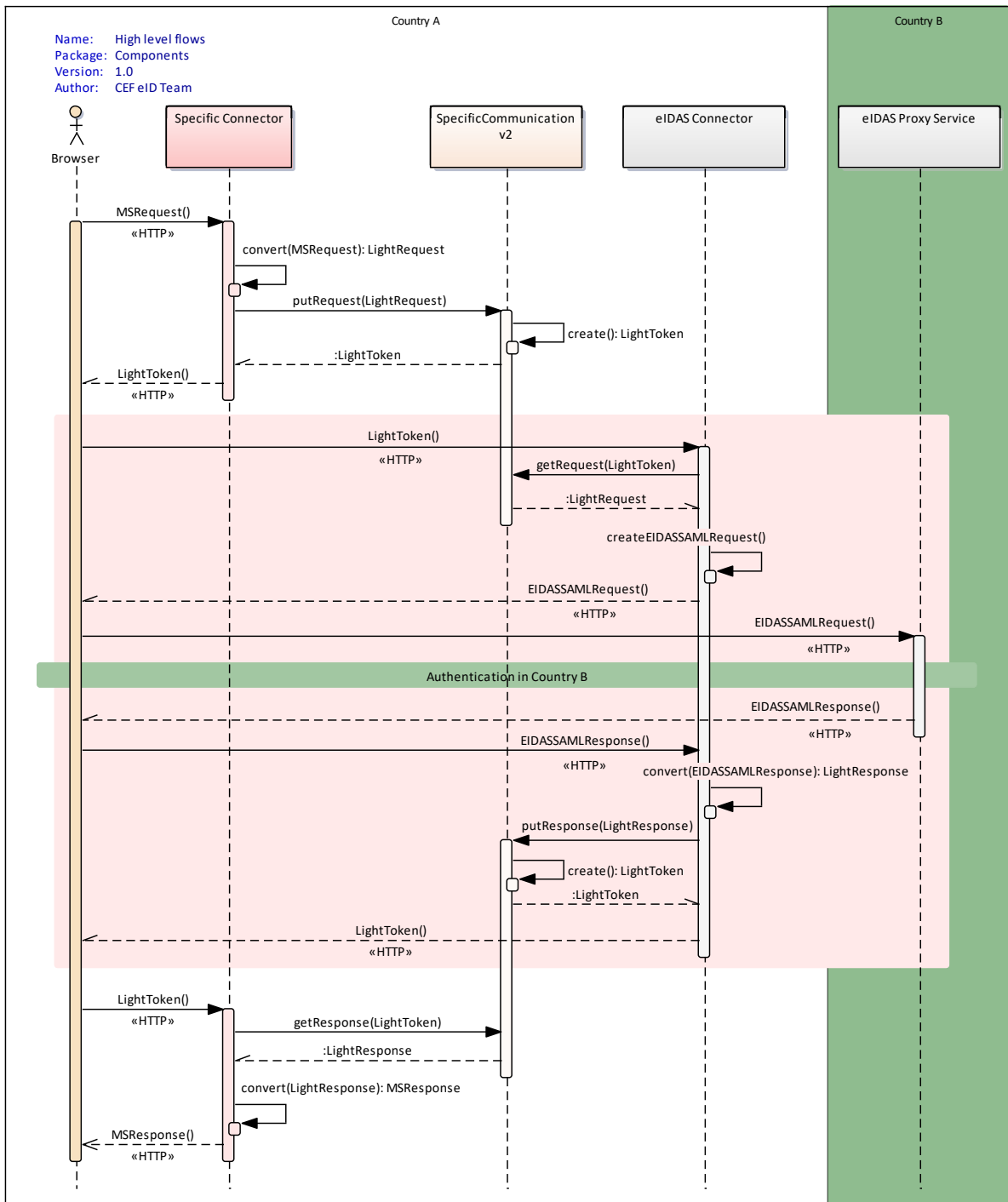
The eIDAS protocol is based on SAML2, implemented with a web profile, so whatever is used in the national infrastructure, the eIDAS-Node will require an HTTP request, and will do Redirects or form Posts containing SAML messages. It requires a client browser capable of understanding HTTP, but does not require cookies or JavaScript support by default.

Control and Data flows are decoupled. The control is done by the user agent (browser) on the public Internet, while the data is happening in the background between back-end interfaces.

### 3.3.1. High level flow

The following diagram demonstrates the high level flow during an originated Request (Receiving MS) scenario, assuming there is a Specific Connector (can be anything in the MS infrastructure, including a Hub), and the CEF eID provided SpecificCommunication API is used for the background communication.





**Figure 3: High level flows**

The scope is restricted to the invocation of cross-border eID authentication service. The highlighted area contains the flows described in the next sections.

### 3.3.1.1. Outbound from MS

This invocation pattern restricts the requester to the use of HTTP. To invoke operation on the eIDAS Network (both issuing and consuming identities), the eIDAS-Node will require a browser hit (HTTP GET or POST) from an endpoint located in the national infrastructure. The HTTP request needs to contain a reference token to a data package,

that is exchanged in the background. See section 4.4.1 – *Implementing the LightToken* for details on this token.

The incoming HTTP request is held, while processing is performed (synchronous way). The token-referenced data package (LightRequest/LightResponse) will be retrieved by the Node and an eIDAS SAML Request/Response is created based on the provided information. This SAML message is placed into the HTTP response to the corresponding HTTP request coming with the initial control flow. The user agent is redirected to the intended eIDAS Node (Proxy-Service) in the Network.

If it is a Request, originated from the MS, the Node will cache the Request in order to correlate with the incoming Response.

If it is a Response, then the Node will recover the original Request from its internal cache, to do the correlation.

### 3.3.1.2. Inbound to MS

When the eIDAS Network initiates an invocation (both response and request), the Node receives and processes the eIDAS SAML message. The incoming user agent HTTP request is held.

The resulting LightRequest/LightResponse is placed on the background communication bus, and a referencing token is created and written to the HTTP response of the initial user agent HTTP request. Then the agent is redirected to a configuration specified URL, that is interpreted as the URL of the MS-Specific.

If the incoming eIDAS message is a Response, the original Request is recovered for correlation from the internal cache.

If the incoming eIDAS message is a Request, it is stored to be recovered from the cache when the MS-based authentication is done, and the control flow returns with the response.

## 3.4. Requirements from MS

As seen in section 3.3 – *Required profile and flows* the CEF eIDAS-Node requires the MS implementation to handle Service Provider requests to:

- supply a user-agent redirect to Connector Node with a Request referencing token;
- push the referenced Request data object via back-end communication to the Connector Node;
- supply an HTTP endpoint where the eIDAS Node redirects the user-agent with a Response referencing token; and
- pull the referenced Response data object from the Connector Node via background communication.

The pattern is the same for implementing cross-border identity issuing in the Proxy Service. Here the MS is responsible for:

- supplying an HTTP endpoint where the eIDAS Node redirects the user-agent with a Request referencing token;

- pulling the referenced Request data object from the Proxy Service Node via background communication;
- supplying a user-agent redirect to the Proxy Service Node with a Response referencing token; and
- pushing the referenced Response data object via back-end communication to the Proxy Service Node.

The technical details and possibilities are described in the following section.

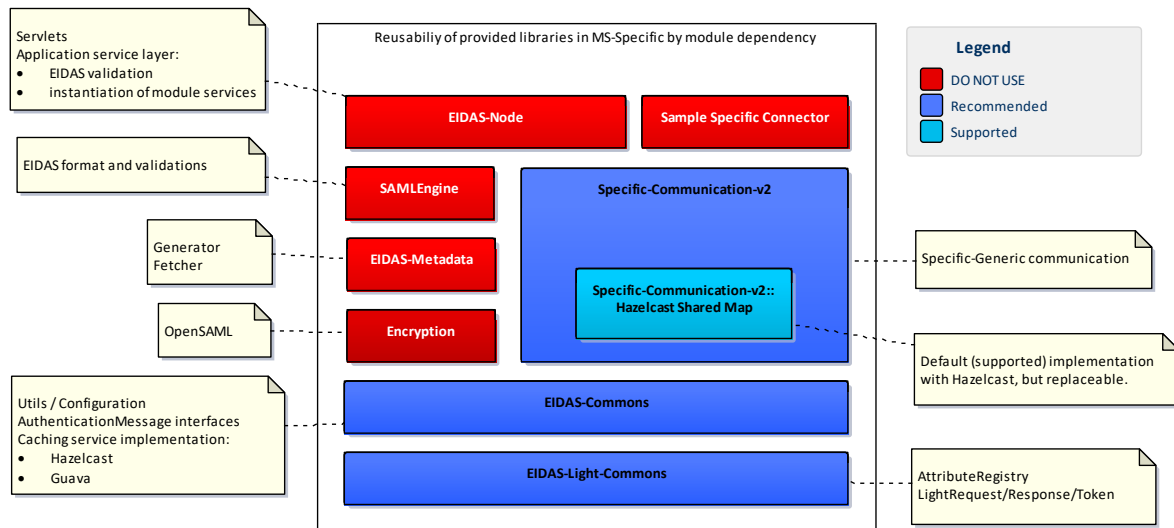
## 4. Integration possibilities

This section describes the recommended integration approaches, starting with the most straightforward.

### 4.1. Provided stack

The CEF eIDAS-Node includes a sample, demo implementation of a Member State Specific Part, that is designed to help the understanding of the recommended integration pattern. The stack itself is customisable by implementing the provided/required interfaces.

The following diagram shows the complete delivery structure (including sample modules) with dependencies. Note that the modules shown in red are labelled 'DO NOT USE' in the legend, this means use only as samples for demonstration purposes, do not use in production. Furthermore, several security vulnerabilities exist and deploying as is in production carries significant risks.



**Figure 4: Delivery structure with dependencies**

The dependencies can be seen starting from the top; everything that is below the component is a dependency, i.e. the eIDAS-Node is dependent on the full stack, the EIDAS-Metadata is only dependent on Encryption, EIDAS-Commons and EIDAS-Light-Commons.

The recommended stack shown in blue is for Java developers, and is realised mostly in `Specific-Communication-v2.0`. This module provides all the necessary functions to communicate with an eIDAS-Node. The provided Sample Specifics (Sample Specific Connector and Specific Proxy Service) demonstrate how to use this API. It is also detailed in the following chapters. The API can be redefined, in which case it must also be done in the Generic part.

The Hazelcast Shared Map (in light blue), is supported and provided. However it is also customisable, any shared map/cache/distributed database product can be used, that fulfils certain technical requirements set by the Member State, and can be integrated with the eIDAS-Node software. For example enterprise WebLogic users may favour use of

Coherence, but Redis or Memcached could equally be alternatives. This option is detailed in section 4.2.5 – *Back-end communication with alternative to Hazelcast*.

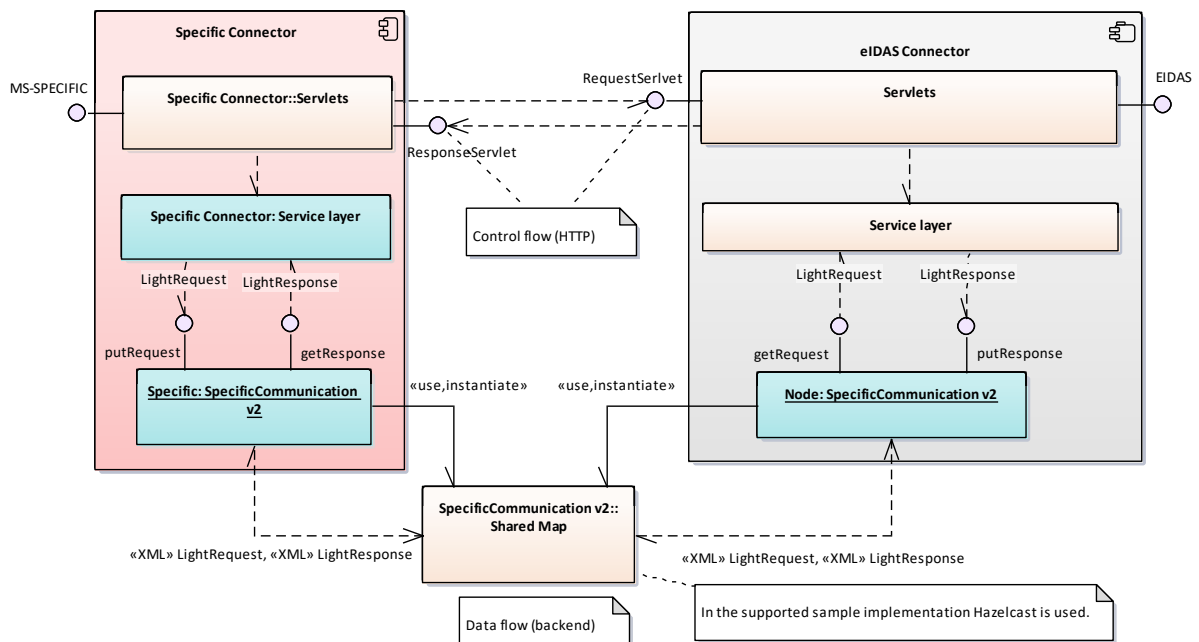
### 4.2. Using the provided SpecificCommunication API

The provided `EIDAS-SpecificCommunicationDefinition` module offers tools for developing the control and data flows. To use it, the Specific part must import the modules:

- EIDAS-Light-Commons; and
- EIDAS-Commons.

from the source delivery, or the binary built JAR files. Therefore it must be a Java application built for a supported JVM version (listed in the *eIDAS-Node Installation and Configuration Guide*).

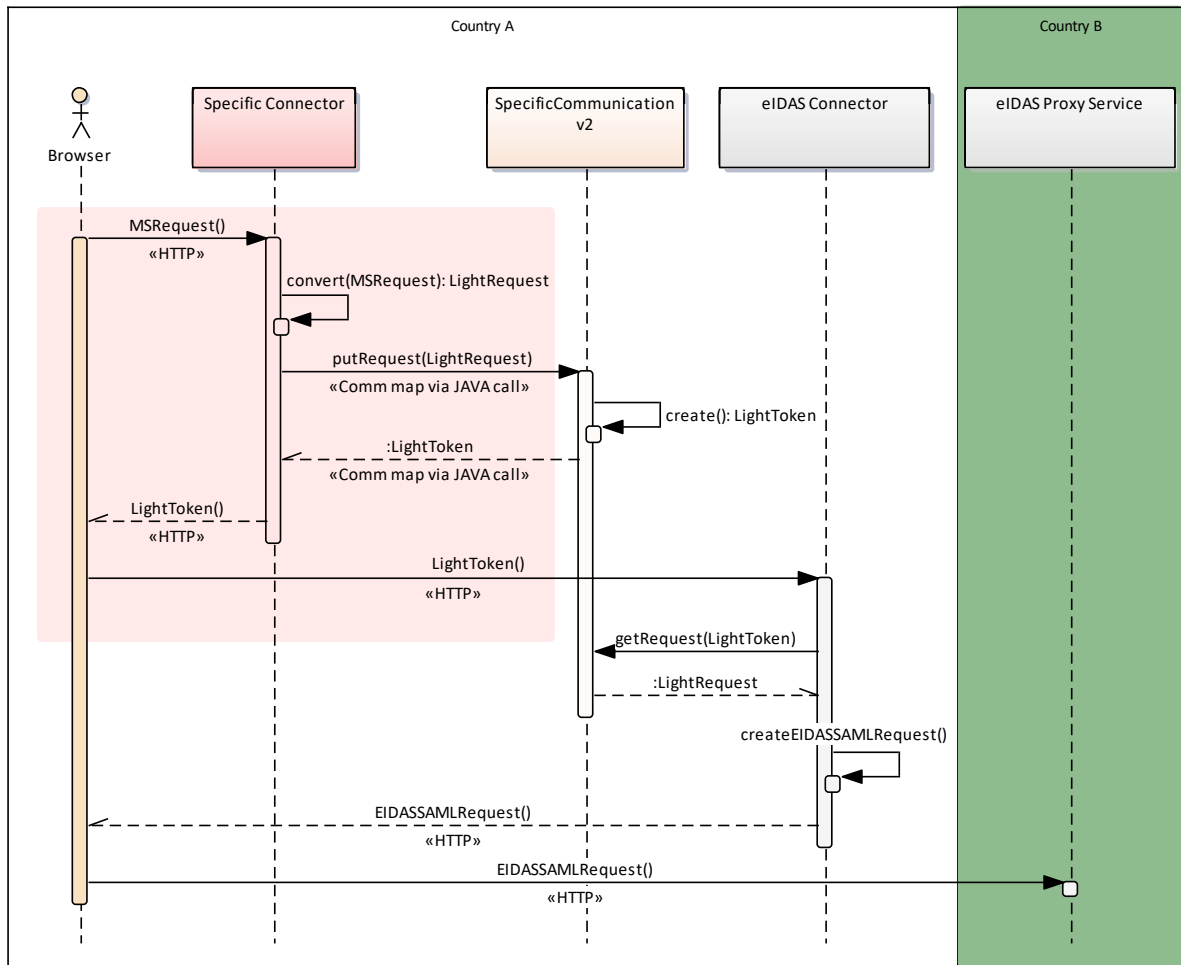
For a Standard Deployment, a possible component layout is shown below:



**Figure 5: Standard Deployment – possible component layout**

The diagram shows how the Specific component in the delivered sample demo chain works. In the Specific Connector there is a service layer that takes care of the necessary transformation of protocols, while a servlet layer helps with the HTTP connections.

The diagram is simplified regarding the control flow; there is no direct connection between the servlet layer, everything here is user-agent based. The actual control flow is visible in the following sequence diagram:



**Figure 6: Simplified control flow**

The entities shown on the diagram are those referenced as 'reference token' and 'data object' in the previous chapters, which are:

- LightToken is the 'referencing token', There is a unique id inside this token used as the internal key of referenced data object (see section 4.4.1 – *Implementing the LightToken*).
- LightRequest is the 'referenced data object' either a Java POJO or XML, containing all the necessary information to compose an eIDAS SAML Request, or alternatively, all business information that can be extracted from a standard eIDAS SAML Request (see section 4.4.2 – *Implementing LightRequest / LightResponse*).
- LightResponse is the same as the LightRequest but representing an eIDAS SAML Response (see section 4.4.2 – *Implementing LightRequest / LightResponse*).

The control flow is done by placing a `LightToken` in an HTTP Request and redirecting the user-agent to the eIDAS Node Generic. The URLs for the redirects are shown in the following table.

**Table 1: Generic redirect URLs**

Action	Relative context URL of Generic
Specific Connector sends Request to the Connector	/SpecificConnectorRequest
Specific Proxy Service sends Response to the Proxy Service	/SpecificProxyServiceResponse

This URL can be changed by updating the `web.xml` in the EIDAS-Node module. The parameter (form input field name) for the `LightToken` is 'token', and can be customised by renaming in `eu.eidas.auth.commons.EidasParameterKeys.TOKEN`.

When the Generic Node wants to initiate a communication to the Specific, it will do the same, redirect the user-agent to configured Specific URLs, with the `LightToken`:

**Table 2: Specific redirect URLs**

Action	Relative context URL of Specific
Forward a Request from the eIDAS Network to Specific Proxy Service	/ProxyServiceRequest
Forward a Response from the eIDAS Network to Specific Connector	/ConnectorResponse

These required URLs can be configured differently by changing `eu.eidas.node.NodeSpecificViewNames.SPECIFIC_SP_RESPONSE` and `IDP_REQUEST` fields.

#### 4.2.1. Use of LightTokens

The `LightToken` itself is a BASE64 encoded message token. The format is detailed in section 4.4.1 – *Implementing the LightToken*.

`LightTokens` are automatically created by the API itself, when `LightRequest/LightResponse` data is supplied to the background communication. The call returns with a `BinaryLightObject`, that is an HTTP transport ready representation of the `LightToken`. The `BinaryLightToken` has a digest and is BASE64 encoded.

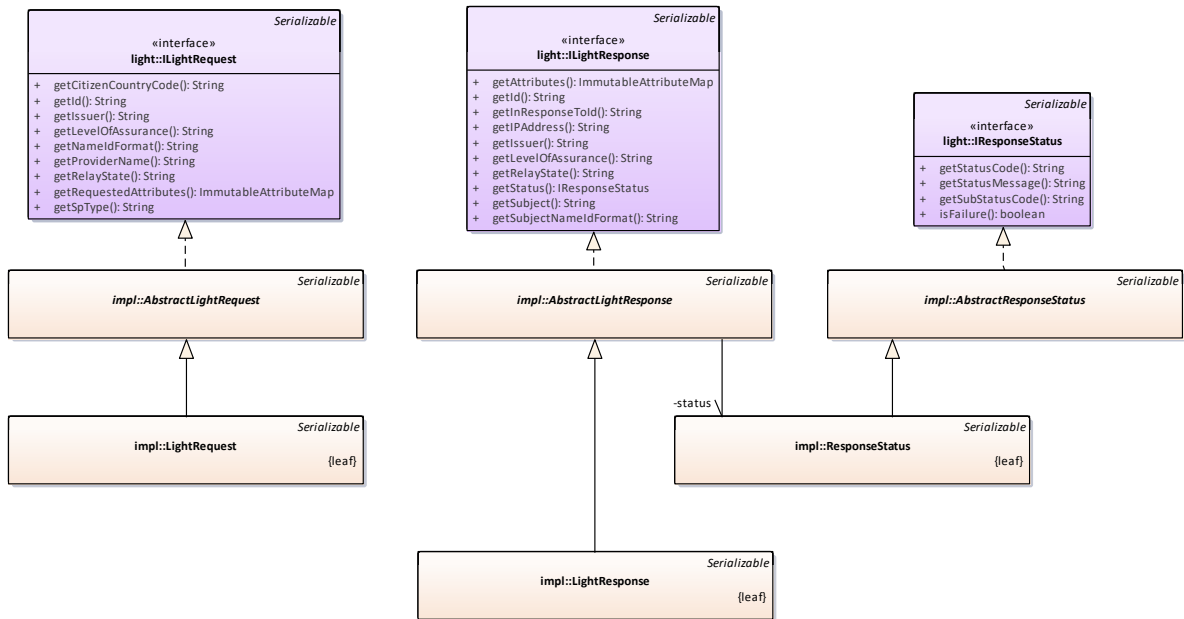
For the digest, algorithm(s) and password(s) must be supplied to the API as described in section 4.4.1 – *Implementing the LightToken*.

Since the `LightToken` implementation is internal to the Specific – Generic communication, the format can be changed, but the Generic Node must be compiled and built with the changed API.

### 4.2.2. Use of LightRequest/LightResponse

The main responsibility of the Specific (or the component responsible for invoking the Generic provided interface) is the composition of `LightRequest` and `LightResponse` objects.

The following diagram shows the interfaces and implementing classes in the EIDAS-LightCommons module.



**Figure 7: Interfaces and implementing classes in EIDAS-LightCommons**

When constructing such an object the Builder pattern needs to be used (for a sample, please see the sample Specific or Generic code).

#### 4.2.2.1. LightRequest

The `LightRequest` can be constructed by creating a `LightRequest.Builder` object using the `LightRequest.builder()` method.

The fields should be populated as shown below.

**Table 3: LightRequest properties**

Field name	Type	Description
id	String	A unique id that is used internally to correlate with the Response.
issuer	String	Not used in version 2.0. It is the issuer of the previous hop, like the Connector provided for the Specific Proxy. Please do not rely on this information.



Field name	Type	Description
<code>citizenCountryCode</code>	String	Country code of the requesting citizen. In version 2.0 and prior, for Specific Proxy it is derived from the last part of domain string of subject of the certificate used for signing. ISO ALPHA-2 format.
<code>levelOfAssurance</code>	String	Assurance level. Values defined in enumeration class <code>eu.eidas.auth.commons.protocol.eidas.LevelOfAssurance</code> can be used.
<code>nameIdFormat</code>	String	Optional string sent to the IdP regarding the identifier format requested (if supported). Maps to <code>NameIDPolicy</code> in eIDAS SAML. Values can be used from <code>eu.eidas.auth.commons.protocol.impl.SamlNameIdFormat</code> enumeration.
<code>providerName</code>	String	Almost free format text identifier of the Service Provider initiating the request. The text must fit into an XML element value (all XML formatting elements must be escaped).
<code>spType</code>	String	Optional element specifying the sector of the SP or the Connector. Must not be used if the sector of the Connector is set up in the Metadata. Possible values are from <code>eu.eidas.auth.commons.protocol.eidas.SpType</code> enumeration.
<code>relayState</code>	String	The Specific can use this value to propagate an internal state or similar with the Request, that will be returned with the Response ( <code>LightResponse</code> ). However it is not recommended to use it for correlation, or to expose internal state information, especially as this field is protected only by the transport layer.  This is a feature proper to SAML supported in all the eIDAS specified bindings.
<code>requestedAttributes</code>	ImmutableAttribute Map	The list of requested attributes. It also supports values. When populating, the Attributes from an <code>AttributeRegistry</code> must be used. The <code>AttributeRegistry</code> of the Specific and the Generic must be synchronised. For detailed information on the <code>AttributeRegistry</code> , please see Appendix A.1.

Once the fields are populated, the `build()` method produces the final object to be passed to the interface.

#### 4.2.2.2. LightResponse

The `LightResponse` is similar to the `LightRequest` in terms of construction and usage.

The fields should be populated as shown in the following table.

**Figure 8: LightResponse properties**

Field name	Type	Description
<code>id</code>	String	A unique id.
<code>inResponseToId</code>	String	A unique id that is used internally to correlate with the original <code>LightRequest</code> pair.
<code>issuer</code>	String	The name of the issuer of the Light Response.
<code>ipAddress</code>	String	The IP address of the user agent as seen on IdP. If specified, the Proxy Service Node replaces it with an address detected there, and uses it in <code>SubjectConfirmation</code> of the eIDAS SAML Response.
<code>levelOfAssurance</code>	String	Assurance level. Values defined in enumeration class <code>eu.eidas.auth.commons.protocol.eidas.LevelOfAssurance</code> can be used.
<code>subjectNameIdFormat</code>	String	Format of the identifier attribute. Values can be used from <code>eu.eidas.auth.commons.protocol.impl.SamlNameIdFormat</code> enumeration.
<code>subject</code>	String	Subject of the Assertion for the eIDAS SAML Response. It is recommended to use the (natural person) unique identifier attribute value here, that is also provided in the attribute set. Theoretically it can be different, e.g. an email address.
<code>status</code>	Complex	Complex element to provide status information from IdP. Detailed below.
<code>status.failure</code>	boolean	Set this to true if the authentication was a failure. Also, on the receiving side expect this is always true, if the authentication is a failure.
<code>status.statusCode</code>	String	Enforced by the SAML2 specifications. Please refer to the <code>EIDASStatusCode</code> enumeration for values. The value must be in alignment with the "failure" flag.
<code>status.subStatusCode</code>	String	Optional, defined by the SAML2 specifications. Please refer to the <code>EIDASSubStatusCode</code> enumeration for values.
<code>status.statusMessage</code>	String	An optional status message. It is transformed by the Proxy Service Node, a generic error code is appended if it is recognised as an error existing in the <i>eIDAS-Node Error Codes</i> document. If not, then a "null – " string is added as prefix.

Field name	Type	Description
relayState	String	According to the SAML specification if there was a value to this field in the Request, the Specific Proxy Service must return it, but if it was empty it can be used to propagate new information to the receiving party.
attributes	ImmutableAttributeMap	The list of attributes in the Assertion. It also supports typed values. When populating, the Attributes from an AttributeRegistry must be used. The AttributeRegistry of the Specific and the Generic must be synchronised. For detailed information on the AttributeRegistry, please see Appendix A.1.

Please note that the `relayState` and `inResponseToId` need to be treated according to the information the Specific Proxy Service received in the `LightRequest`. The `relayState` must be populated from the `relayState` received in the Request (if it was not empty), and the `inResponseToId` must be the same as the `Id` field from the `LightRequest` pair. This means an implicit requirement to store the information in the Specific to make the correlation.

#### 4.2.3. Service interface and implemented beans

To use the provided API, simply use the provided methods of interface `SpecificCommunicationService`.



**Figure 9: SpecificCommunicationService interface**

In the Specific Connector, calls to the `putRequest()` and the `getAndRemoveResponse()` methods are necessary, while the Specific Proxy Service must invoke `getAndRemoveRequest()` and `putResponse()`.

Placing a `LightRequest/LightResponse` with the 'put' operation results in a `LightToken`, that can be used to pass the control flow.

The methods `getAndRemove` expect the `LightToken` from the HTTP Request (BASE64 encoded), and an `AttributeDefinition` list (from `AttributeRegistry`) in order to be able to serialize/deserialize attributes to XML based on the identifier, the `nameURI`. The result is the Light data object.

The implementation of this interface is based on the generic pattern used in the eIDAS-Node. There are two classes, `SpecificConnectorCommunicationServiceImpl` and `SpecificProxyserviceCommunicationServiceImpl`, that encapsulate all the `LightToken` encoding operations (see Figure 10). They can be initialised by Spring or by

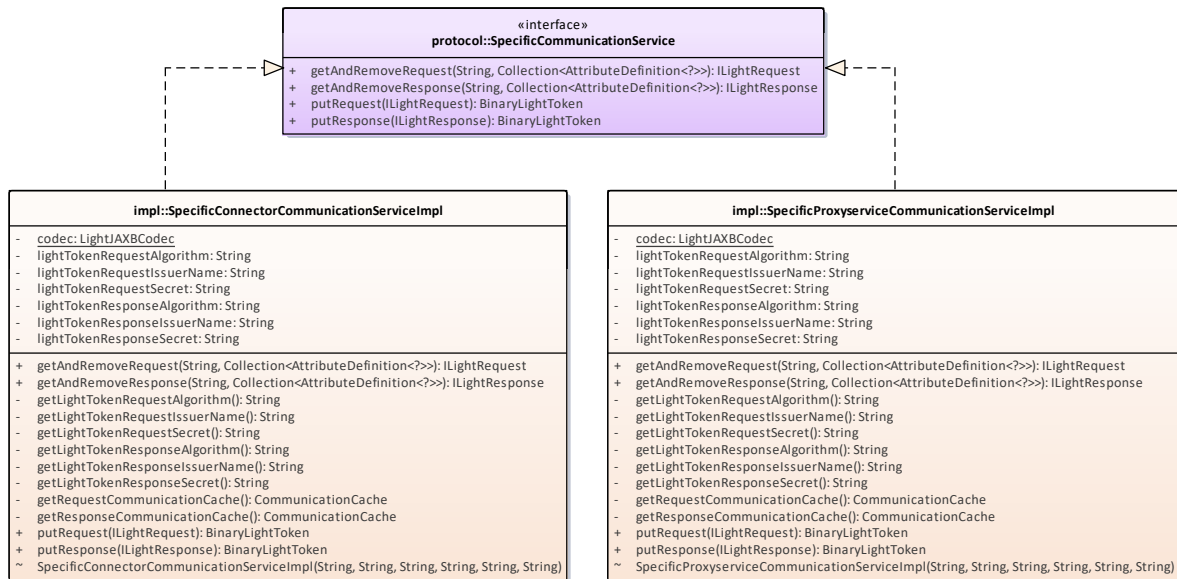
programmatic way, you can find an example of the former in the sample demo Specific implementation.

Upon initialisation the following parameters are set (by the constructor).

**Table 4: LightToken operations**

Field name	Type	Usage
lightToken[X]IssuerName	String	A custom identifier of the calling service is placed in the LightToken (like EUPROXYSERVICE)
lightToken[X]Secret	String	A secret (passphrase) that is used to create the digest. This must be shared between the communicating parties (i.e. Specific Connector and Generic Connector).
lightToken[X]Algorithm	String	A digest algorithm for the LightToken, depending on the capabilities of the underlying Java security MessageDigestSpi implementation. At least SHA256 is recommended.

The [X] can be either Request or Response, so settings can differ for handling the different directions.



**Figure 10: SpecificCommunicationService**

The sample demo Specific implementation uses Spring to instantiate these classes as Beans. Configuration is via a configuration file through the application context, so it is reloadable.

#### 4.2.4. Back-end communication with Hazelcast

The provided API uses Hazelcast to communicate between the Generic and Specific parts, and to replicate eIDAS sessions between Nodes of the same type (Generic-Generic and Specific-Specific) to achieve high availability. With this choice neither HTTP Session nor enterprise bean replication are needed.

The communication is via Shared Maps, with dedicated identifiers. The identifiers are partly hardcoded, partly declared by the Spring application context. These maps need to be declared in the Hazelcast configuration. The following shows those used by the communication API.

**Table 5: Hazelcast shared maps**

Map name	Role
<code>specificNodeConnectorRequestProviderMap</code>	Stores Requests sent from Specific Connector to Generic Connector
<code>nodeSpecificConnectorResponseProviderMap</code>	Stores Responses sent from Generic Connector to Specific Connector.
<code>nodeSpecificProxyServiceRequestProviderMap</code>	Stores Requests sent from Generic Proxy Service to Specific Proxy Service
<code>specificNodeProxyServiceResponseProviderMap</code>	Stores Responses sent from Specific Proxy Service to Generic Proxy Service

All parameters are system dependent, mostly affecting the performance. Setting 'time-to-live-seconds' has an extra security importance. This parameter should be set to a minimum value sufficient enough for the user-agent to be redirected to the next component in the control flow. This limits the possibility for a takeover of the flow by a third party (even though other security countermeasures and mechanisms applied to eIDAS authentication will prevent it happening).

Physical communication between the shared maps is via XML. This allows integration with the Generic part using your own implementation rather than the provided API, or even to use technology other than Java. See section 4.4 – *Integrating the provided Generic with custom implementation of communication* for details.

#### 4.2.5. Back-end communication with alternative to Hazelcast

It is possible to replace Hazelcast with an alternative, like Oracle Coherence, Redis, etc. without impacting the `SpecificCommunicationService`. In this case the API needs no modification, and instead of using Hazelcast `ConcurrentMapService` implementation from EIDAS-Commons, another implementation can be packaged. This must implement the `CommunicationCache` interface, and for the internal session correlation, a `ConcurrentMapService` interface. The hard coded identifier of Maps must be retained.

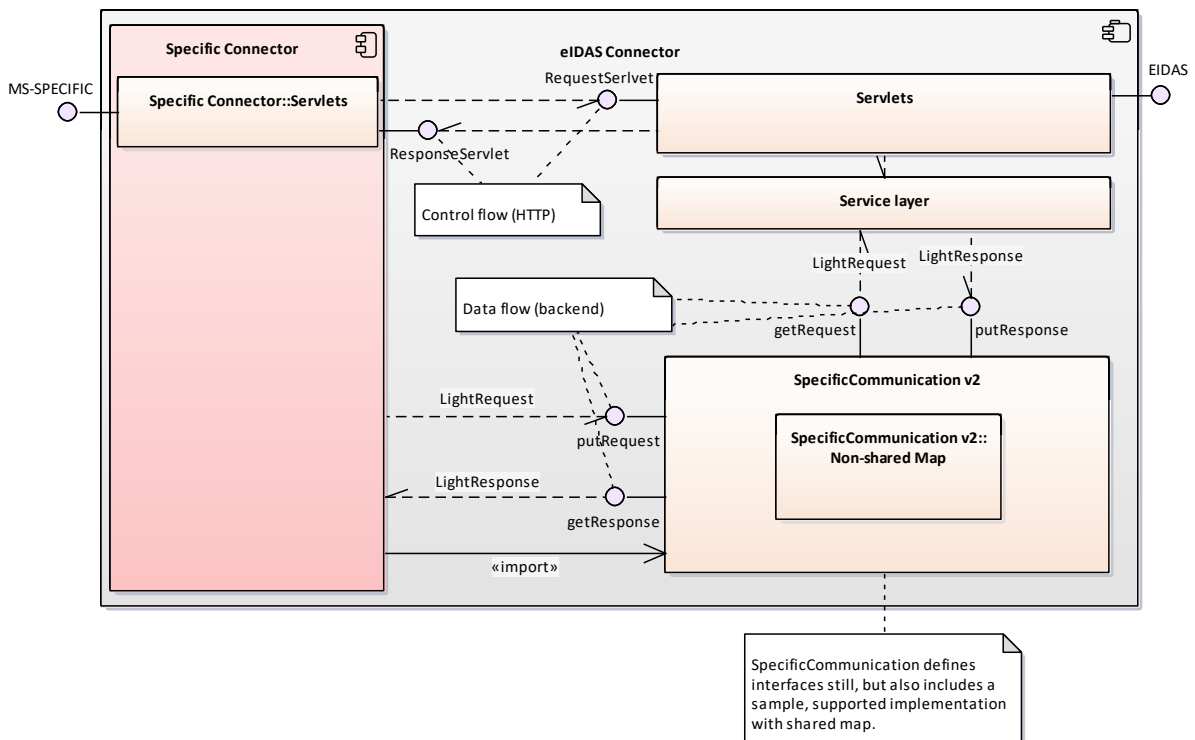
Please note that using other than Hazelcast also impacts how the Generic part correlates request-reply pairs and caches metadata between them in a cluster environment. It can

be done by implementing the `ConcurrentMapService` interface, and replacing the appropriate entries in the Spring application context of the Generic part.

#### 4.2.6. Back-end communication in Monolithic Deployment

By default the Monolithic Deployment does not provide a distributed map, only an in-memory Guava cache, so high availability can be achieved by using advanced load balancing, for example sticky sessions. This is a build-time restriction only, so it is possible to unlock the shared map.

The following diagram shows the basic component layout for the Monolithic Deployment.



**Figure 11: Basic component layout for Monolithic Deployment**

#### 4.3. Re-implementing SpecificCommunication

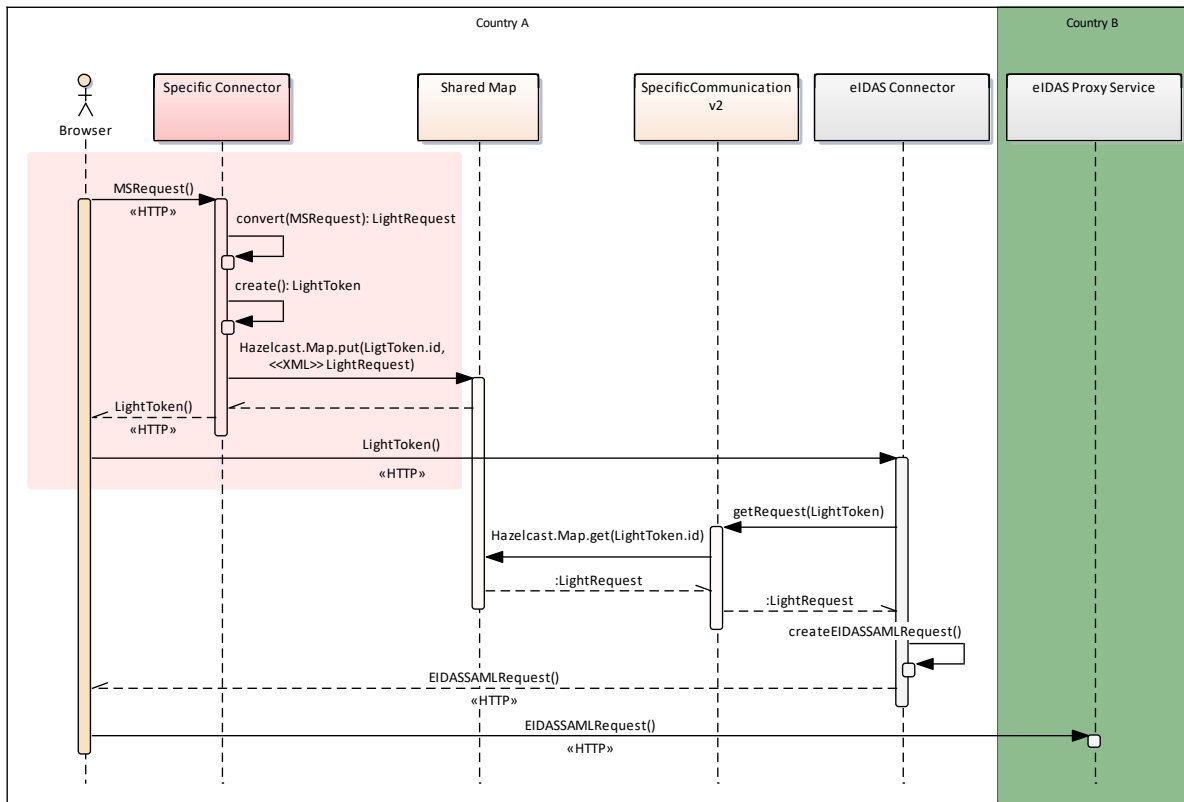
It is possible to re-implement the `EIDAS-SpecificCommunicationDefinition`, and use a very different integration approach/pattern. It means rewriting the parts responsible for the data flow and/or the control flow.

The best way to do this is by retaining the `SpecificCommunicationService` interface, so that there is less impact to the Generic part (most likely the application context driven injections need to be adjusted).

#### 4.4. Integrating the provided Generic with custom implementation of communication

Those who prefer not to use the provided API in their Specific solution can integrate with the Generic Node by implementing the control and data flows, fulfilling the same

requirements given by the CEF eID API implementation. The pattern, which is the same through the whole communication process, is shown on the following diagram.



**Figure 12: Integrating the provided Generic with custom implementation of communication**

#### 4.4.1. Implementing the LightToken

The basic concepts of `LightTokens` are described in section 4.2.1 – *Use of LightTokens*, and the communication is described in section 4.2 – *Using the provided SpecificCommunication API*. The `LightToken` needs to be placed in the 'token' parameter of the HTTP Request.

The physical form is composed of the following fields.

**Table 6: LightToken format**

Field	Description
Issuer name	A simple text string that helps identify (debug) which component is sending the redirect (e.g. EIDASPROXY)
ID	A unique identifier. This identifier is used to reference the real data object (LightRequest/LightResponse) in the backend communication. It must be unique within the eviction period defined for the data object.

Field	Description
Creation timestamp	A timestamp showing when the LightToken was created. Together with the ID it makes the token unique and prevents reuse, it also provides a first line of check when discarding an expired request. It also helps debugging. The format is: yyyy-MM-dd HH:mm:ss SSS (see <a href="https://www.joda.org/joda-time/apidocs/org/joda/time/format/DateTimeFormat.html">https://www.joda.org/joda-time/apidocs/org/joda/time/format/DateTimeFormat.html</a> ).
Digest	This is a custom digest encoded in BASE64. It guarantees a minimum level of integrity and a minimum level of assurance that the token has originated from a trusted component. It is there to help the first-line detection and discarding of requests in a denial of service attack.

These four fields must be concatenated with a vertical bar character ('|', ASCII 124) without any trailing spaces, and encoded in BASE64.

#### Example:

```
specificCommunicationDefinitionConnectorRequest|852a64c0-8ac1-445f-b0e1-992ada493033|2017-12-11 14:12:05 148|7M8p+uP8CKXuMi2IqSda1tg452WlRvcOSwu0dcisSYE=
```

#### In BASE64 encoded:

```
c3B1Y2lmaWNBb21tdW5pY2F0aW9uRGVmaW5pdG1vbknVbm51Y3Rvc1JlcXVlc3R8ODUyYTY0YzAtOGFjMS00NDVmLWIwZTEtOTkyYWRhNDkzMdMzfDIwMTctMTItMTEgMTQ6MTI6MDUgMTQ4fDdNOHArVA4Q0tYdUlpMk1xU2RhMXRnNDUyV2xSdmNPU3d1MGRjaXNTWUU9
```

To create the message digest, the fields must be concatenated together into the following sequence: 2, 1 then 3 (id, issuer, timestamp) with the vertical bar separating. Append with another vertical bar and finally the secret shared between the communicating parties (i.e., Specific Connector and Generic Connector) (see `lightToken[X]Secret` in Table 4). The digest is calculated from this string.

#### Example before calculating the digest:

```
852a64c0-8ac1-445f-b0e1-992ada493033|specificCommunicationDefinitionConnectorRequest|2017-12-11 14:12:05 148|mySecretConnectorRequest
```

Finally the secret needs to be replaced with the calculated digest value, in a BASE64 encoded form, so it results in the first example. Then the whole token must be encoded in BASE64 before going with the HTTP request.

By default the token is limited to 1024 bytes, which can be changed in `LightTokenEncoder.MAX_TOKEN_SIZE`.

When receiving a `LightToken`, it must be processed in the reverse way to how it was constructed.



First, there are some validations & checks to be performed:

1. Compare the actual size to a reasonable maximum (maximum not defined, at your discretion).
2. Decode from BASE64.
3. Split to number of parts (with a limit of four possible parts).
4. Using the parts, verify the digest.
5. Sanitise the parts, validate formats.
6. Optionally the check the timestamp for expiration.

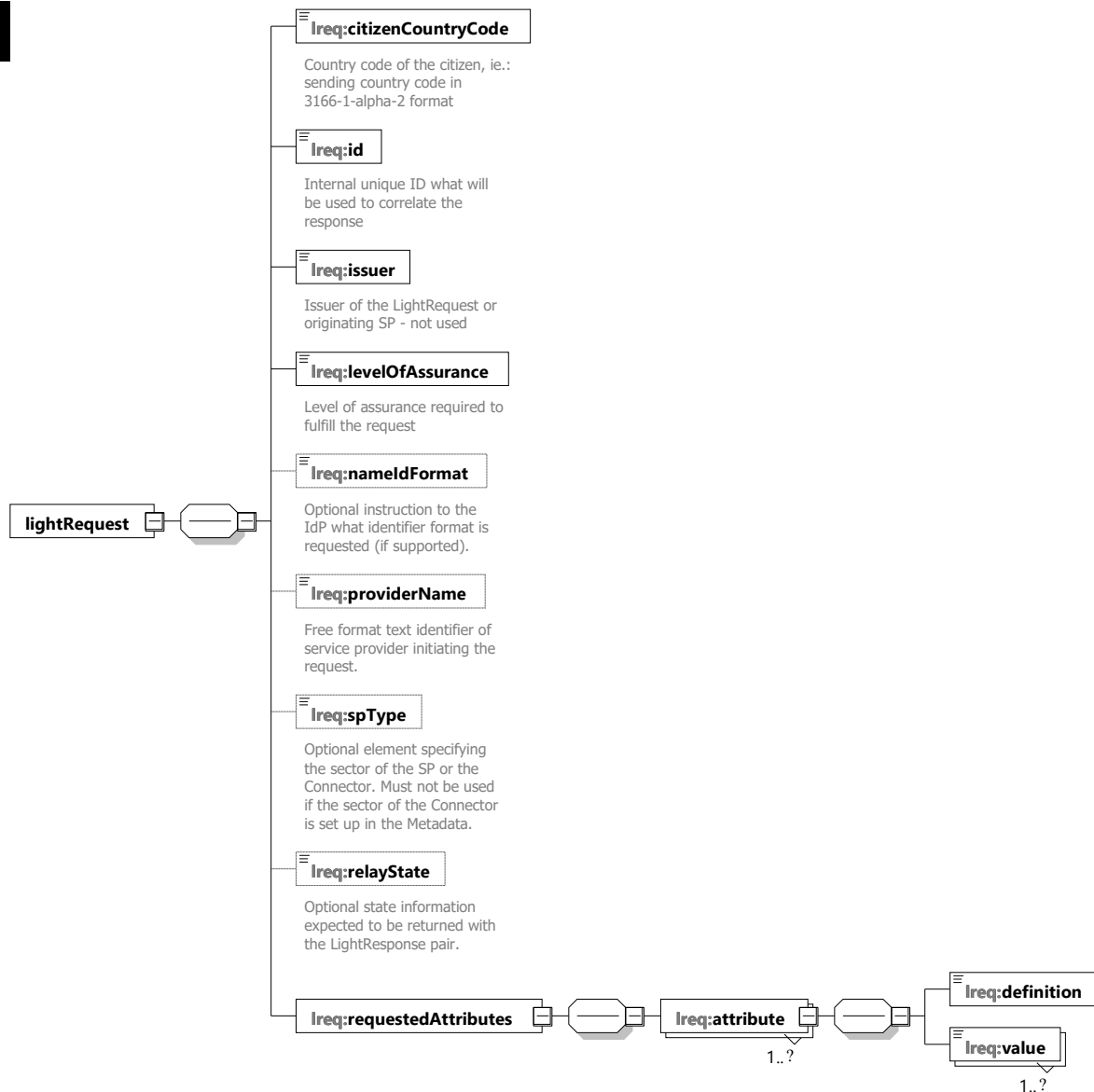
At the end of this process the ID to recover the Light data object can be used.

#### **4.4.2. Implementing LightRequest / LightResponse**

The provided CEF eIDAS-Node uses XML for background communication. The custom Specific implementation should compose and parse `LightRequest` and `LightResponse` objects according to the following schema definitions.

##### **4.4.2.1. The XML LightRequest**

The following figure shows a simplified schema diagram representing the schema for `LightRequest` XMLs.



**Figure 13: XML LightRequest schema**

The following schema definition can be found in Appendix A.2.1 (there is a copy of this schema files in `EIDAS-SpecificCommunicationDefinition/src/test/resources` folder of the source code delivery).

Note that `EuropassISOCountries_V1.6.0.xsd` is only imported to present the ISO alpha 2 country codes, it is not necessary.

Usually the Request does not contain any attribute values, just references for the requested ones. In case it is needed, please read the next section where the use of values is described with the `LightResponse`.

The XML element `requestedAttributes` is oversimplified in the schema document. The XSD accepts generic `xs:string` typed values, however – in real life – the marshalling logic expects types according to the XML type definitions defined to the `AttributeRegistry`.

The mapping is done through the `AttributeRegistry` with the `nameUri` identifier, in other words the name of the attribute.

When the `AttributeRegistry` is referencing a certain type, that type must be supplied in the value elements. Since the current implementation is using the samemarshallers/unmarshallers for constructing SAML messages and processing Light XML objects, the value format is the same as in the *eIDAS SAML Attribute Profile v1.1\_2* Technical specification.

#### **4.4.2.2. The XML `LightResponse`**

The following schema diagram shows the simplified XML `LightResponse` object:



**Figure 14: Simplified XML LightResponse schema**

The schema file is included in the folder `EIDAS-specificCommunicationDefinition/src/test/resources` of the source delivery, also available in Appendix A.2.2.

The 'attributes' element (also the `requestedAttributes` in the `LightRequest`) is not fully defined in the XSD.

When an attribute needs to be presented to this list in the `Light` object, there is a sequence which must be followed.

First the 'definition' element should be created. The text value content of this element must exactly match one `nameUri` from the `AttributeRegistry` (either from the normal eIDAS Profile or from the "additional attributes"). For example:

```
<definition>http://eid.as.europa.eu/attributes/naturalperson/PersonIdentifier</definition>
```

The `CommunicationDefinition` uses this element to identify the appropriate `AttributeRegistry` element, including the marshaller/unmarshaller methods. This also means, that any value appended to the list MUST follow the declared `XMLType` and MUST meet with the format expected by the serialisation.

The `PersonIdentifier` for example is serialized with the `LiteralStringAttributeValueMarshaller` class, so it can be a free format String, such as:

```
<value>Vivaldi-987654321</value>
```

So the whole attribute element would look as follows:

```
<attribute>
<definition>http://eid.as.europa.eu/attributes/naturalperson/PersonIdentifier</definition>
<value>Vivaldi-987654321</value>
</attribute>
```

For most attributes, there can be multiple values, like:

```
<attribute>
<definition>http://eid.as.europa.eu/attributes/naturalperson/CurrentGivenName</definition>
<value>Antonio</value>
<value>Lucio</value>
<value>Vivaldi</value>
</attribute>
```

The supported built-in types of EIDAS-Commons are described in the following sections. These can be extended if necessary.

#### 4.4.2.3. DateTimeAttribute

This type of attribute value is in the format:

YYYY + "-" + MM + "-" + DD (as defined for `xsd:date`)

Example:

```
<attribute>
<definition>http://eidas.europa.eu/attributes/naturalperson/DateOfBirth</definition>
<value>2018-02-28</value>
</attribute>
```

#### 4.4.2.4. BooleanAttribute

Boolean values need to follow simple choice of string values:

"true" or "false".

Not used in standard eIDAS Profile.

#### 4.4.2.5. IntegerAttribute

This element supports a signed Integer between `Integer.MIN_VALUE` and `Integer.MAX_VALUE`.

Not used in standard eIDAS Profile.

#### 4.4.2.6. LiteralStringAttribute

The most common generic String type, contains a simple string.

#### 4.4.2.7. GenderAttribute

This attribute can have one of three values:

"Male", "Female", and "Not Specified"<sup>1</sup>

Example:

```
<attribute>
<definition>http://eidas.europa.eu/attributes/naturalperson/Gender</definition>
<value>Male</value>
</attribute>
```

---

<sup>1</sup> At the time of publication the values "Not Specified" or "Unspecified" are under investigation by the Technical Subgroup. Until clarified it is recommended to omit this attribute instead of using the third value.

#### 4.4.2.8. PostalAddressAttribute

This is the most complex attribute value with several subfields. The structure follows the Core ISA Vocabulary definition, however when it gets serialized, to maintain a flat format it is encoded in BASE64.

In the unencoded format the `PostalAddress` XML fragment should look like:

```
<AddressId>http://address.example/id/be/eh11aa</AddressId>
<PoBox>1234</PoBox >
<LocatorDesignator>28</LocatorDesignator>
<LocatorName>DIGIT building</LocatorName>
<CvAddressArea>Etterbeek</CvAddressArea>
<Thoroughfare>Rue Belliard</Thoroughfare>
<PostName>ETTERBEEK CHASSE</PostName>
<AdminUnitFirstLine>BE</AdminUnitFirstLine>
<AdminUnitSecondLine>ETTERBEEK</AdminUnitSecondLine>
<PostCode>1040</PostCode>
<FullCvaddress>Rue Belliard 28\nBE-1040 Etterbeek</FullCvaddress>
```

For the description of the fields, please consult the Core ISA Vocabulary. It may be sufficient to use only the `fullCvaddress`.

Encoded, and in final form, it would look as follows:

```
<attribute>
<definition>http://eidas.europa.eu/attributes/naturalperson/CurrentAddress</definition>
<value>PEFkZHJlc3NJZD5odHRwOi8vYWRkcmVzcy5leGFtcGxlL2l1L2JlL2VoMTFhYTtwvQWRkcmVzc0lk
Pg0KPFbvQm94PjEyMzQ4L1BvQm94ID4NCjxMb2NhdG9yRGVzaWduYXRvcj4yODwvTG9jYXRvcjRlc2lnbmF
0b3I+DQo8TG9jYXRvcj5hbWU+RElHSVQgYnVpbGRpbmc8L0xvY2F0b3JOYW11Pg0KPEN2QWRkcmVzc0FyZW
E+RXR0ZXJiZWVrPC9DdkFkZHJlc3NBcmVhPg0KPFRob3JvdWdoZmFyZT5sdWUgQmVsbGlhcmQ8L1Rob3Jvd
WdoZmFyZT4NCjxQb3N0TmFtZT5FVFRFUKJFRUSgQ0hBU1NFPC9Qb3N0TmFtZT4NCjxBZG1pblVuaXRGaXJz
dExpbmU+QkU8L0FkbWluVW5pdEZpcnN0TGluZT4NCjxBZG1pblVuaXRtZWVvbmRMAW51PkVUVEVSQkVFSzw
vQWRtaW5Vbml0U2Vjb25kTGluZT4NCjxQb3N0Q29kZT4xMDQwPC9Qb3N0Q29kZT4NCjxGdWxsQ3ZlZGRyZX
NzPlJlZSBCZWxsYWYyZCAyOFxuQkUtMTA0MCFdHRlcmJlZWs8L0ZlZGxDbmFkZHJlc3M+</value>
</attribute>
```

## Appendix A. Diagrams and schemas

### A.1 Attribute Registry

`AttributeRegistry` is a catalogue of attributes defined for the eIDAS-Node. The attribute registry is implemented in the class `eu.eidas.auth.common.attribute.AttributeRegistry`. An attribute registry can be instantiated programmatically with the `AttributeRegistry` class or loaded from a file.

The attribute registry file is composed of attribute definitions. They represent the `eu.eidas.auth.common.attribute.AttributeDefinition` class.

An attribute definition is composed of the following properties:

- **NameUri** : [mandatory]: the name URI of the attribute (full name and must be a valid URI).
- **FriendlyName** : [mandatory]: the friendly name of the attribute (short name);
- **PersonType** : [mandatory]: either `NaturalPerson`, `LegalPerson`, `RepresentativeNaturalPerson` OR `RepresentativeLegalPerson`.
- **Required** : [optional]: whether the attribute is required by the specification (and is part of the minimal data set which must be requested).
- **TransliterationMandatory** : [optional]: whether the attribute values must be transliterated if provided in non `LatinScript` variants.
- **UniqueIdentifier** : [optional]: whether the attribute is a unique identifier of the person (at least one unique identifier attribute must be present in authentication responses).
- **XmlType.NamespaceUri** : [mandatory]: the XML namespace URI for the attribute values, for example: `http://www.w3.org/2001/XMLSchema` for an XML Schema string.
- **XmlType.LocalPart** : [mandatory]: the name of the XML type for the attributes values, for example: `'string'` for an XML Schema string.
- **XmlType.NamespacePrefix** : [mandatory]: the name of the XML namespace prefix for the attributes values, for example: `'xs'` for an XML Schema string.
- **AttributeValueMarshaller** : [mandatory]: the name of a class available in the classpath which implements the `eu.eidas.auth.common.attribute.AttributeValueMarshaller` interface.

Each attribute definition in the properties file is assigned a unique ID followed by a dot (.) which allows the parser to associate properties to one given attribute definition. The unique ID can be any string not containing a period. A convention can be to use numbers as unique IDs as in the example above.

All properties used by the parser can be found in `eu.eidas.auth.common.attribute.AttributeSetPropertiesConverter.Suffix`.



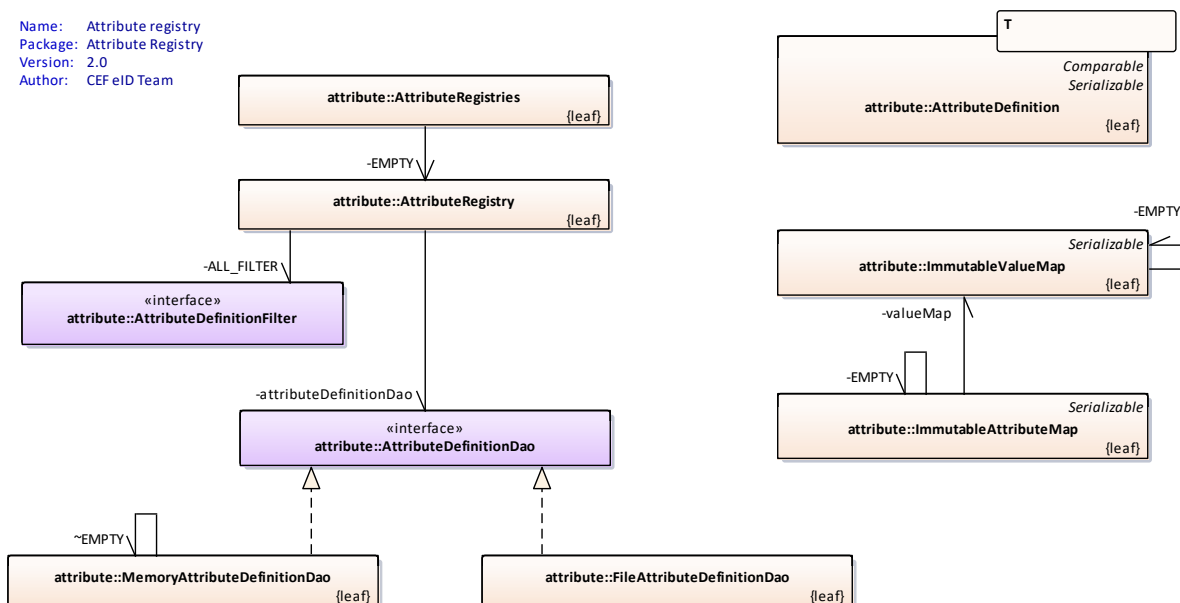
### A.1.1 Hard coded attributes

In the eIDAS-Node, the eIDAS standard attributes are hard coded in classes `NaturalPersonSpec`, `LegalPersonSpec`, `RepresentativeNaturalPersonSpec` and `RepresentativeLegalPersonSpec`. The reasons for hard coding is that they change only when the Technical Specifications are changed, and strong reference of the attributes are needed to carry out eIDAS-based validations. Beside this hard-wired specification, there are also XML schema definitions `saml_eidas_natural_person.xsd`, `saml_eidas_legal_person.xsd`, `saml_eidas_representative_natural_person.xsd` and `saml_eidas_representative_legal_person.xsd` in `SAMLEngine` common resources folder, loaded by SAML bootstrap and used only to validate not encrypted response assertions (thus may never be used in production environment).

There is another set of attribute definitions that can be configured by specifying `additionalAttributeRegistryFile` in `SamLEngine.xml` - as a general xml definition for so called 'additional attributes'. By default the package includes a `saml-engine-additional-attributes.xml` example file configured for the specific `ProtocolEngine` instance.

## A.1.2 Class related attribute registries

The Demo Specific and Demo SP / IdP use file/memory based registries instead of hard coded.



**Figure 15: Classes related to basic attribute registry**

The diagram above shows the classes related to basic attribute registry. The `AttributeRegistries` class acts like a static factory for creating registries. Depending on which method is called, it provides an `AttributeRegistry` encapsulating a `MemoryAttributeDefinitionDao` (method 'of') or a `FileAttributeDefinitionDao` (fromFile), both extending the `AttributeDefinitionDao` interface. Both are based on `SingletonAccessors` of `ImmutableSortedSets` containing the actual `AttributeDefinitions`.

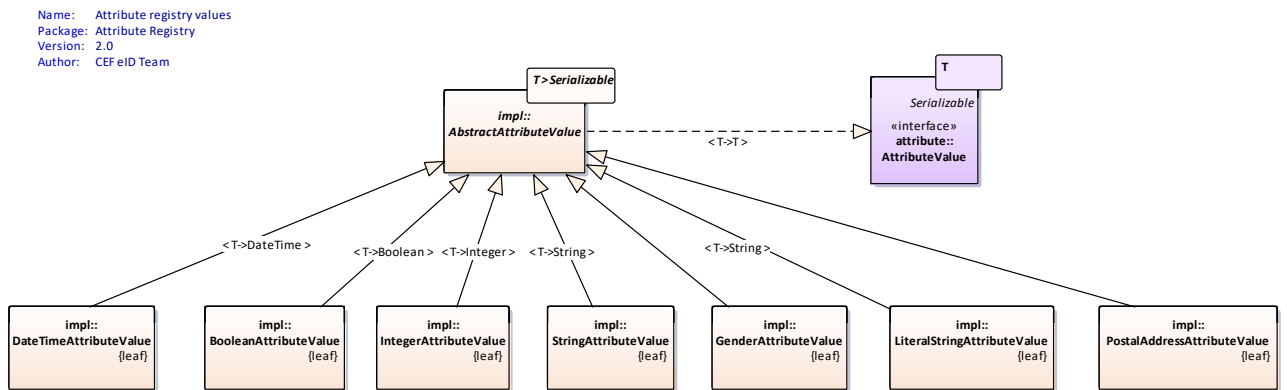
`AttributeRegistry` class also provides an interface called `AttributeDefinitionFilter`, that enables quick filtering of received attributes based on anonymous classes. The example legal MDS filter from `EidasProtocolProcessor`:

```

public static final AttributeRegistry.AttributeDefinitionFilter
MANDATORY_LEGAL_FILTER =
    new AttributeRegistry.AttributeDefinitionFilter() {
        @Override
        public boolean accept(@Nonnull AttributeDefinition<?>
attributeDefinition) {
            return attributeDefinition.isRequired()
                && attributeDefinition.getPersonType() ==
PersonType.LEGAL_PERSON;
        }
    };
  
```

An `AttributeRegistry` contains definitions only, where values are also needed `ImmutableAttributeMap` are being used. `ImmutableAttributeMap` is thread safe, serializable and immutable - instantiated by builder pattern - follows the heterogeneous

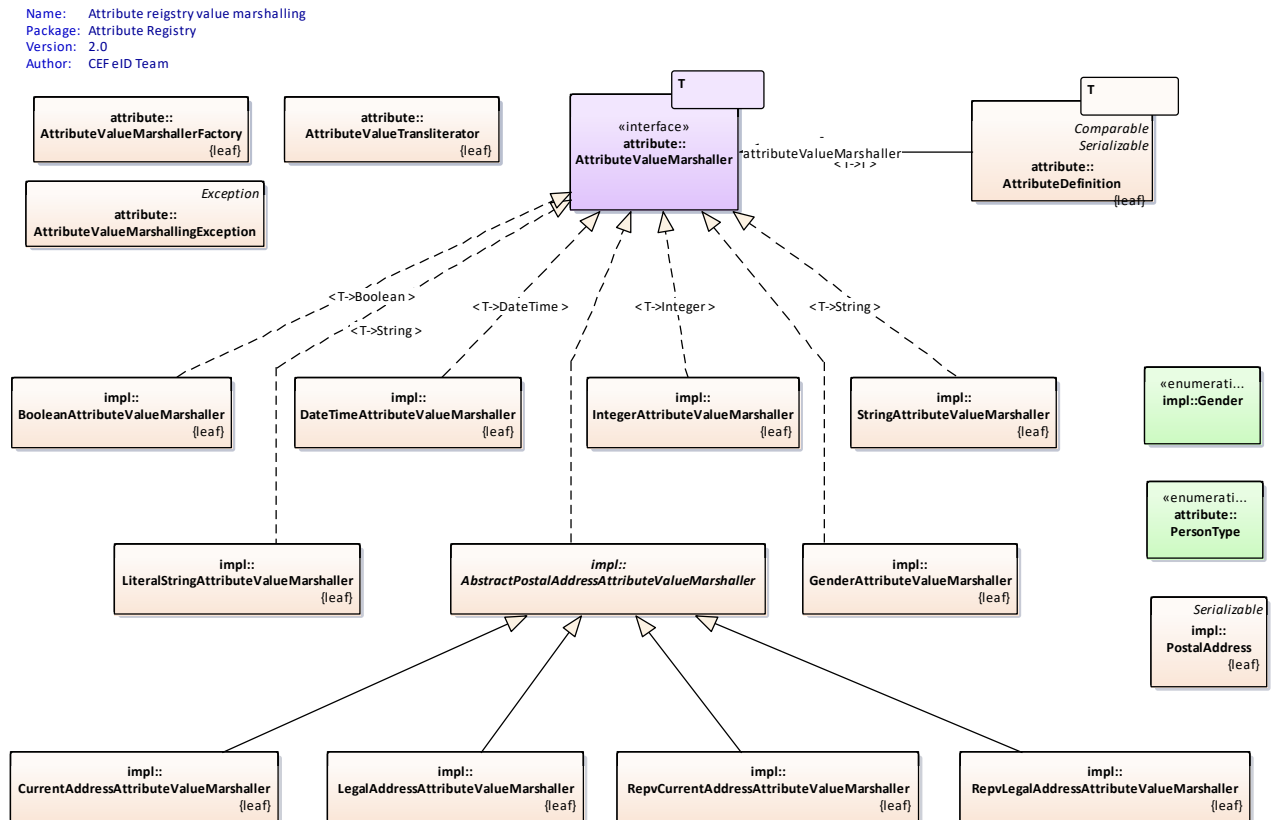
container pattern. When built, internally contains `ImmutableValueMap`, but basically a set of `AttributeDefinitions` with associated `AttributeValue(s)`.



**Figure 16: Attribute registry values**

The values are typed, therefore can contain complex elements like `PostalAddressAttributeValue`. The generic `AbstractAttributeValue` is responsible to hold any information on SAML attribute level (only transliteration by now).

Since the values are needed to be converted between user types and XML representation eligible for SAML Assertion, there are `AttributeValueMarshallers` defined for each type:



**Figure 17: Attribute registry value marshalling**

The marshaller interface definition is actually a part of the attribute definition.

## A.2 XSD schemas for Light objects

### A.2.1 LightRequest schema

```
<?xml version="1.0" encoding="utf-8"?>
<xs:schema xmlns:xs="http://www.w3.org/2001/XMLSchema"
  xmlns:lreq="http://cef.eidas.eu/LightRequest"
  xmlns:ep="http://europass.cefdefop.europa.eu/Europass"
  targetNamespace="http://cef.eidas.eu/LightRequest" elementFormDefault="qualified">
  <xs:import namespace="http://europass.cefdefop.europa.eu/Europass"
    schemaLocation="EuropassISOCountries_V1.6.0.xsd"/>
  <!--
http://europass.cefdefop.europa.eu/xml/included/EuropassISOCountries_V1.6.0.xsd -->
  <xs:element name="lightRequest">
    <xs:complexType>
      <xs:sequence>
        <xs:element name="citizenCountryCode" minOccurs="1"
maxOccurs="1">
          <xs:annotation>
            <xs:documentation xml:lang="en">Country code of the
citizen, ie.: sending country code in 3166-1-alpha-2 format</xs:documentation>
          </xs:annotation>
        </xs:element>
        <xs:element name="id" type="xs:string" minOccurs="1"
maxOccurs="1">
          <xs:annotation>
            <xs:documentation xml:lang="en">Internal unique ID
that will be used to correlate the response</xs:documentation>
          </xs:annotation>
        </xs:element>
        <xs:element name="issuer" type="xs:string">
          <xs:annotation>
            <xs:documentation xml:lang="en">Issuer of the
LightRequest or originating SP - not used</xs:documentation>
          </xs:annotation>
        </xs:element>
        <xs:element name="levelOfAssurance" minOccurs="1"
maxOccurs="1">
          <xs:annotation>
            <xs:documentation xml:lang="en">Level of assurance
required to fulfil the request</xs:documentation>
          </xs:annotation>
          <xs:simpleType>
            <xs:restriction base="xs:string">
              <xs:enumeration
value="http://eidas.europa.eu/LoA/low"/>
              <xs:enumeration
value="http://eidas.europa.eu/LoA/substantial"/>
              <xs:enumeration
value="http://eidas.europa.eu/LoA/high"/>
            </xs:restriction>
          </xs:simpleType>
        </xs:element>
      </xs:sequence>
    </xs:complexType>
  </xs:element>
</xs:schema>
```

```

        <xs:element name="nameIdFormat" minOccurs="0" maxOccurs="1">
            <xs:annotation>
                <xs:documentation xml:lang="en">Optional instruction
to the IdP that identifier format is requested (if supported).</xs:documentation>
            </xs:annotation>
            <xs:simpleType>
                <xs:restriction base="xs:string">
                    <xs:enumeration
value="urn:oasis:names:tc:SAML:2.0:nameid-format:persistent"/>
                    <xs:enumeration
value="urn:oasis:names:tc:SAML:2.0:nameid-format:transient"/>
                    <xs:enumeration
value="urn:oasis:names:tc:SAML:1.1:nameid-format:unspecified"/>
                </xs:restriction>
            </xs:simpleType>
        </xs:element>
        <xs:element name="providerName" type="xs:string" minOccurs="0"
maxOccurs="1">
            <xs:annotation>
                <xs:documentation xml:lang="en">Free format text
identifier of service provider initiating the request.</xs:documentation>
            </xs:annotation>
        </xs:element>
        <xs:element name="spType" minOccurs="0" maxOccurs="1">
            <xs:annotation>
                <xs:documentation xml:lang="en">Optional element
specifying the sector of the SP or the Connector. Must not be used if the sector of
the Connector is set up in the Metadata.</xs:documentation>
            </xs:annotation>
            <xs:simpleType>
                <xs:restriction base="xs:string">
                    <xs:enumeration value="public"/>
                    <xs:enumeration value="private"/>
                </xs:restriction>
            </xs:simpleType>
        </xs:element>
        <xs:element name="relayState" type="xs:string" minOccurs="0"
maxOccurs="1">
            <xs:annotation>
                <xs:documentation xml:lang="en">Optional state
information expected to be returned with the LightResponse pair.</xs:documentation>
            </xs:annotation>
        </xs:element>
        <xs:element name="requestedAttributes">
            <xs:complexType>
                <xs:sequence>
                    <xs:element name="attribute"
maxOccurs="unbounded">
                        <xs:complexType>
                            <xs:sequence>
                                <xs:element name="definition"
type="xs:string" minOccurs="1" maxOccurs="1"/>
                                <xs:element name="value"
type="xs:string" maxOccurs="unbounded"/>
                            </xs:sequence>

```

```

        </xs:complexType>
    </xs:element>
</xs:sequence>
</xs:complexType>
</xs:element>
</xs:sequence>
</xs:complexType>
</xs:element>
</xs:schema>

```

## A.2.2 Light Response schema

```

<?xml version="1.0" encoding="utf-8"?>
<xs:schema xmlns:xs="http://www.w3.org/2001/XMLSchema"
  xmlns:lreq="http://cef.eidas.eu/LightResponse"
  targetNamespace="http://cef.eidas.eu/LightResponse" elementFormDefault="qualified">
  <xs:element name="lightResponse">
    <xs:complexType>
      <xs:sequence>
        <xs:element name="id" type="xs:string" minOccurs="1"
maxOccurs="1">
          <xs:annotation>
            <xs:documentation xml:lang="en">Internal unique
ID</xs:documentation>
          </xs:annotation>
        </xs:element>
        <xs:element name="inResponseToId" type="xs:string"
minOccurs="1" maxOccurs="1">
          <xs:annotation>
            <xs:documentation xml:lang="en">The original unique
ID of the Request this Response is issued for</xs:documentation>
          </xs:annotation>
        </xs:element>
        <xs:element name="issuer" type="xs:string" minOccurs="1"
maxOccurs="1">
          <xs:annotation>
            <xs:documentation xml:lang="en">Issuer of the
LightRequest or originating SP - not used</xs:documentation>
          </xs:annotation>
        </xs:element>
        <xs:element name="ipAddress" type="xs:string" minOccurs="0"
maxOccurs="1">
          <xs:annotation>
            <xs:documentation xml:lang="en">Optional IP address
of the user agent as seen on IdP</xs:documentation>
          </xs:annotation>
        </xs:element>
        <xs:element name="relayState" type="xs:string" minOccurs="0"
maxOccurs="1">
          <xs:annotation>
            <xs:documentation xml:lang="en">Optional state
information to return to the Consumer.</xs:documentation>
          </xs:annotation>
        </xs:element>

```

```

        <xs:element name="subject" type="xs:string" minOccurs="1"
maxOccurs="1">
            <xs:annotation>
                <xs:documentation xml:lang="en">Subject of the
Assertion for the eIDAS SAML Response.</xs:documentation>
            </xs:annotation>
        </xs:element>
        <xs:element name="subjectNameIdFormat" minOccurs="1"
maxOccurs="1">
            <xs:annotation>
                <xs:documentation xml:lang="en">Format of the
identifier attribute.</xs:documentation>
            </xs:annotation>
            <xs:simpleType>
                <xs:restriction base="xs:string">
                    <xs:enumeration
value="urn:oasis:names:tc:SAML:2.0:nameid-format:persistent"/>
                    <xs:enumeration
value="urn:oasis:names:tc:SAML:2.0:nameid-format:transient"/>
                    <xs:enumeration
value="urn:oasis:names:tc:SAML:1.1:nameid-format:unspecified"/>
                </xs:restriction>
            </xs:simpleType>
        </xs:element>
        <xs:element name="levelOfAssurance" minOccurs="1"
maxOccurs="1">
            <xs:annotation>
                <xs:documentation xml:lang="en">Level of assurance
required to fulfil the request</xs:documentation>
            </xs:annotation>
            <xs:simpleType>
                <xs:restriction base="xs:string">
                    <xs:enumeration
value="http://eidas.europa.eu/LoA/low"/>
                    <xs:enumeration
value="http://eidas.europa.eu/LoA/substantial"/>
                    <xs:enumeration
value="http://eidas.europa.eu/LoA/high"/>
                </xs:restriction>
            </xs:simpleType>
        </xs:element>
        <xs:element name="status" minOccurs="1" maxOccurs="1">
            <xs:annotation>
                <xs:documentation xml:lang="en">Complex element to
provide status information from IdP</xs:documentation>
            </xs:annotation>
            <xs:complexType>
                <xs:sequence>
                    <xs:element name="failure" type="xs:boolean"
minOccurs="0" maxOccurs="1">
                        <xs:annotation>
                            <xs:documentation>Value "true"
represents that the authentication request is failed</xs:documentation>
                        </xs:annotation>
                    </xs:element>

```

```

maxOccurs="1">
    <xs:element name="statusCode" minOccurs="0"
    <xs:annotation>
        <xs:documentation>SAML2 defined
    status code</xs:documentation>
    </xs:annotation>
    <xs:simpleType>
        <xs:restriction base="xs:string">
            <xs:enumeration
value="urn:oasis:names:tc:SAML:2.0:status:Success">
                <xs:annotation>
                    <xs:documentation>Authentication success</xs:documentation>
                </xs:annotation>
            </xs:enumeration>
            <xs:enumeration
value="urn:oasis:names:tc:SAML:2.0:status:Requester">
                <xs:annotation>
                    <xs:documentation>Authentication failure: the requester did something
wrong</xs:documentation>
                </xs:annotation>
            </xs:enumeration>
            <xs:enumeration
value="urn:oasis:names:tc:SAML:2.0:status:Responder">
                <xs:annotation>
                    <xs:documentation>Authentication failure: error at the responder
side</xs:documentation>
                </xs:annotation>
            </xs:enumeration>
        </xs:restriction>
    </xs:simpleType>
</xs:element>
<xs:element name="subStatusCode" minOccurs="0"
maxOccurs="1">
    <xs:annotation>
        <xs:documentation>Optional SAML2
defined sub status code used in case of failure</xs:documentation>
    </xs:annotation>
    <xs:simpleType>
        <xs:restriction base="xs:string">
            <xs:enumeration
value="urn:oasis:names:tc:SAML:2.0:status:AuthnFailed"/>
            <xs:enumeration
value="urn:oasis:names:tc:SAML:2.0:status:InvalidAttrNameOrValue"/>
            <xs:enumeration
value="urn:oasis:names:tc:SAML:2.0:status:InvalidNameIDPolicy"/>
            <xs:enumeration
value="urn:oasis:names:tc:SAML:2.0:status:VersionMismatch"/>
            <xs:enumeration
value="urn:oasis:names:tc:SAML:2.0:status:RequestDenied"/>
        </xs:restriction>
    </xs:simpleType>
</xs:element>

```



```

        <xs:element name="statusMessage"
type="xs:string" minOccurs="0" maxOccurs="1">
        <xs:annotation>
        <xs:documentation>An optional status
message</xs:documentation>
        </xs:annotation>
        </xs:element>
    </xs:sequence>
</xs:complexType>
</xs:element>
<xs:element name="attributes">
    <xs:complexType>
        <xs:sequence>
            <xs:element name="attribute"
maxOccurs="unbounded">
                <xs:complexType>
                    <xs:sequence>
                        <xs:element name="definition"
type="xs:string" minOccurs="1" maxOccurs="1"/>
                        <xs:element name="value"
type="xs:string" maxOccurs="unbounded"/>
                    </xs:sequence>
                </xs:complexType>
            </xs:element>
        </xs:sequence>
    </xs:complexType>
</xs:element>
</xs:sequence>
</xs:complexType>
</xs:element>
</xs:sequence>
</xs:complexType>
</xs:element>
</xs:schema>

```