



# **eIDAS-Node Integration Package Service Offering Description**

Version 1.0

## Document history

Version	Date	Modification reason	Modified by
1.0	21/03/2018	Origination	DIGIT

### Disclaimer

This document is for informational purposes only and the Commission cannot be held responsible for any use which may be made of the information contained therein. References to legal acts or documentation of the European Union (EU) cannot be perceived as amending legislation in force or other EU documentation.

The document does not supplement or amend terms and conditions of any procurement procedure; therefore, no compensation claim can be based on the contents of the present document.

This Service Offering Description (SOD) is a statement of the intentions of the Commission within the context of the Connecting Europe Facility (CEF) Work Programme. However, the SOD is a non-binding statement made in good faith, which is not legally enforceable against the Commission, and which creates no new binding legal obligations on the Commission. Any references to duties or obligations within this SOD should therefore be understood as a good faith statement of intent only, without any obligation of result or legal recourse in case of breaches of such duties or obligations.

## Table of contents

DOCUMENT HISTORY .....	2
TABLE OF CONTENTS .....	3
TABLE OF FIGURES .....	4
TABLE OF TABLES .....	5
1. INTRODUCTION .....	7
1.1. Purpose of the service .....	7
1.2. CEF eID Building Block .....	7
1.3. Users .....	8
1.4. Scope .....	8
1.5. Benefits .....	8
2. ROLES AND RESPONSIBILITIES .....	9
2.1. eIDAS-Node Provider .....	10
2.2. CEF eID Support Team .....	10
3. HOW TO IMPLEMENT AND INTEGRATE AN EIDAS-NODE STEP BY STEP .....	11
3.1. Process overview .....	11
3.2. Step 1: Release package .....	11
3.3. Step 2: Assess .....	11
3.4. Step 3: Download and build .....	12
3.5. Step 4: Test implementation .....	12
3.6. Step 5: Test interoperability readiness .....	13
3.7. Step 6: Operate .....	13
4. TERMS AND CONDITIONS .....	15
4.1. Financial implications, compensation and public procurement .....	15
4.2. Intellectual Property Rights .....	15
4.3. Further Provisions and Limitations .....	15
5. CONTACT INFORMATION .....	16

**Table of figures**

Figure 1: Integration package service process overview .....	11
Figure 2: Step 2: Assess.....	12
Figure 3: Step 3: Download and build .....	12
Figure 4: Step 5: Test interoperability readiness.....	13
Figure 5: Step 6: Operate.....	14

**Table of tables**

Table 1 – CEF eID eIDAS-Node Integration Package Service Roles and Responsibilities .. 9

## Approach and purpose of the document

This document is the CEF eID eIDAS-Node Integration Package Service Offering Description (SOD).

The document is intended for Member States operating or wanting to operate an eIDAS-Node and for any non-Member State third parties that have been mandated by a Member State to operate an eIDAS-Node on their behalf.

**DISCLAIMER:** This document is provided for information purposes and does not constitute a commitment or obligation on the part of the European Commission.

## Glossary

The key terms used in this Service Offering Description are defined in the CEF Definitions section on the CEF Digital Single Web Portal:

<https://ec.europa.eu/cefdigital/wiki/display/CEFDIGITAL/CEF+Definitions>

The key acronyms used in this Service Offering Description are defined in the CEF Glossary on the CEF Digital Single Web Portal:

<https://ec.europa.eu/cefdigital/wiki/pages/viewpage.action?spaceKey=CEFDIGITAL&title=CEF+Glossary>

## 1. Introduction

### 1.1. Purpose of the service

The goal of the CEF eID Integration Package service is to provide a downloadable sample software, aimed at helping to implement the CEF eID Building Block, consisting of the source code for an eIDAS-Node and demo tools (Identity Provider (IdP) and Service Provider (SP)).

The eIDAS-Node software is a sample implementation of the eID eIDAS Profile. It is developed by the European Commission with the help of Member States collaborating in the technical sub-group of the eIDAS Expert Group. The eIDAS-Node software contains the necessary modules to help Member States to communicate with other eIDAS-compliant counterparts in a centralised or distributed fashion.

The sample implementation is composed of the following:

- **eIDAS-Node**: an implementation of the eID eIDAS Profile able to communicate with other nodes of the eIDAS Network. The eIDAS-Node can either request (via an eIDAS-Node Connector) or provide (via an eIDAS-Node Proxy Service) cross-border authentication;
- **Testing tools (demo Service Provider and demo Identity Provider)**: additional tools for setting up a demo environment for testing purposes; and
- **Documentation** to facilitate in the implementation.

**Note:** The testing tools should be used for demo purposes only and should not be deployed in a production environment.

**Note:** Specific Parts (i.e. functionality that is specific to the Member State's implementation rather than common to all) must be developed by the eIDAS-Node Provider. A sample implementation is provided for demo purposes only.

**Disclaimer:** The users of the eIDAS-Node sample implementation remain fully responsible for its integration with back-end systems (Service Providers and Identity Providers), testing, deployment and operation. The support and maintenance of the sample implementation, as well as any other auxiliary services, are provided by the European Commission according to the terms defined in the [European Union Public Licence](#) (EUPL).

### 1.2. CEF eID Building Block

The CEF eID building block helps public administrations and private online service providers to extend the use of their online services to citizens from other EU Member States. It allows **cross-border authentication**, in a secure, reliable and trusted way, by making national electronic identification systems interoperable.

Once this building block is deployed in a Member State, the **mutual recognition of national eIDs** becomes possible between participating Member States, in line with the eIDAS (electronic Identification and Signature) legal framework and with the privacy requirements of all the participating countries. Mutual recognition of national eIDs allows citizens of one Member State to access online services provided by public and private organisations from other participating EU Member States, using their own national eID.

The CEF eID building block provides a set of services which are designed to make it as easy as possible for eIDAS-Node implementers and operators to build and maintain an eIDAS compliant Node.

CEF eID also provides community management services and up to date information on the status of eID across Europe, both of which are of benefit to the broader eIDAS eID ecosystem.

### **1.3. Users**

The CEF eID integration package is intended for the following type of Users:

- eIDAS-Node Provider – any person who is responsible for implementation, validation, testing, quality assurance and acceptance of an eIDAS-Node; and
- CEF eID Support Team – responsible for providing the sample implementation and for providing support.

### **1.4. Scope**

The CEF eID Integration Package service is intended to manage:

- the release on CEF Digital of incremental versions of the eIDAS-Node sample implementation;
- the release on CEF Digital of intermediate versions of the eIDAS-Node sample implementation as required to fix issues, bugs and security weaknesses; and
- publication on CEF Digital of updates to documentation as required by software releases.

### **1.5. Benefits**

The adoption of the eIDAS-Node sample implementation brings the following benefits:

- reduced costs of creating and maintaining eIDAS compliant software components;
- reduced learning curve for adopters interested in joining the eIDAS Network; and
- demonstration that it is feasible to implement eIDAS specifications by providing a working end-to-end demonstrator.



## 2. Roles and responsibilities

This section describes the main roles in the CEF eID eIDAS-Node Integration package service and their responsibilities.

The following table summarises the split of roles and responsibilities between the different actors in the CEF eID eIDAS-Node Integration package service process in the form of a RACI matrix where:

- **Responsible (R)**: indicates the entities that perform the process-step. Every process-step has at least one responsible entity. Responsibilities can also be shared.
- **Accountable (A)**: indicates the entity that is ultimately accountable for the process-step. Every process-step has only one accountable entity.
- **Consulted (C)**: indicates the entities that give feedback or are consulted during the process-step. This is a two-way process. Not every process-step has an entity that is being consulted.
- **Informed (I)**: indicates the entities that need to be informed on the results of the process-step. This is a one-way process. Not every process-step has an entity that is being informed.

The process is described in detail in Section 3 — '*How to implement and integrate an eIDAS-Node step by step*'.

**Table 1 – CEF eID eIDAS-Node Integration Package Service Roles and Responsibilities**

Process/Service	Responsible Entity	
	eIDAS-Node Provider	CEF eID Support team
Step 1: Release package		A/R
Step 2: Assess	A/R	C/I
Step 3: Download and build	A/R	C/I
Step 4: Develop Specific Parts and integrate with SP and IdP	A/R	C
Step 5: Test implementation	R/A	
Step 6: Test interoperability readiness <sup>1</sup>	A/I	R/C

<sup>1</sup> As part of the CEF eID Interoperability Readiness Testing Service offering

Process/Service	Responsible Entity	
	eIDAS-Node Provider	CEF eID Support team
Step 7: Test Cross-border interoperability	R/A	I/C
Step 8: Test end-to-end services	R/A	I/C
Step 9: Operate	R/A	C

## 2.1. eIDAS-Node Provider

**Role:** eIDAS-Node Provider

**Responsibilities:**

- Implement Members State's Specific Parts (Connector/Proxy Service);
- Integrate Service Provider and National IdP;
- Tests (internal and external); and
- Operates.

## 2.2. CEF eID Support Team

**Role:** Support team

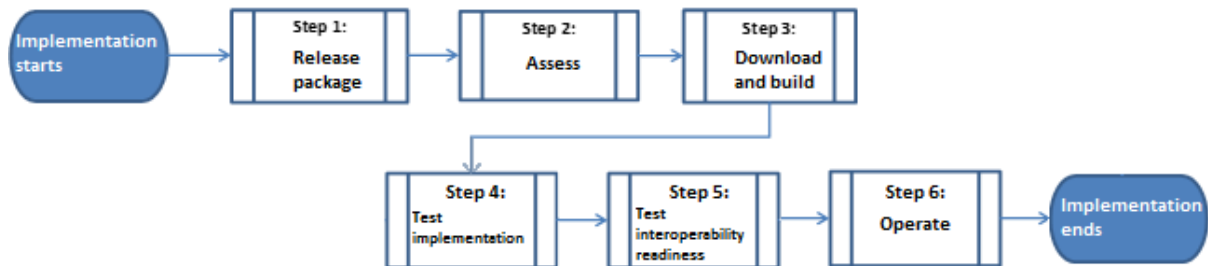
**Responsibilities:**

- Maintenance of the CEF eID sample implementations based on the eIDAS Technical Specifications;
- When available, provision of the Middleware components together with the CEF eID sample implementation;
- Perform change management and release management for the CEF eID sample implementation;
- Provide technical documentation; and
- Provide technical support for the CEF eID sample implementation;

### 3. How to implement and integrate an eIDAS-Node step by step

#### 3.1. Process overview

The figure below presents an overview of the main steps of the eIDAS-Node integration process. Each of the process steps is described in more detail in the next sections.



**Figure 1: Integration package service process overview**

#### 3.2. Step 1: Release package

**Purpose:** To make available the integration package on the public website.

**Actor:** CEF eID Support Team

CEF eID Support Team:

1. Prepares the Integration package for publication.
2. Uploads the package and documentation to CEF Digital.

#### 3.3. Step 2: Assess

**Purpose:** To study the eIDAS eID Profile Technical Specifications to ensure that the eIDAS-Node Provider has the correct understanding of what is required to build an eIDAS-compliant Node.

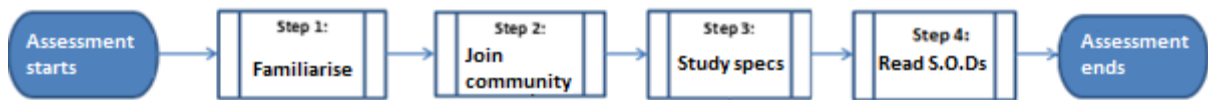
**Actor:** eIDAS-Node Provider

**Process:**

eIDAS-Node Provider:

1. Familiarises themselves with the information on CEF Digital.
2. Joins the eID implementation community.
3. Studies the eIDAS eID Profile & Technical Specifications.
4. Reads the available Service Offering Descriptions:
  - CEF eID Training SOD;
  - CEF eID Service Desk SOD; and

- CEF eID Interoperability Readiness Testing Service SOD.



**Figure 2: Step 2: Assess**

### 3.4. Step 3: Download and build

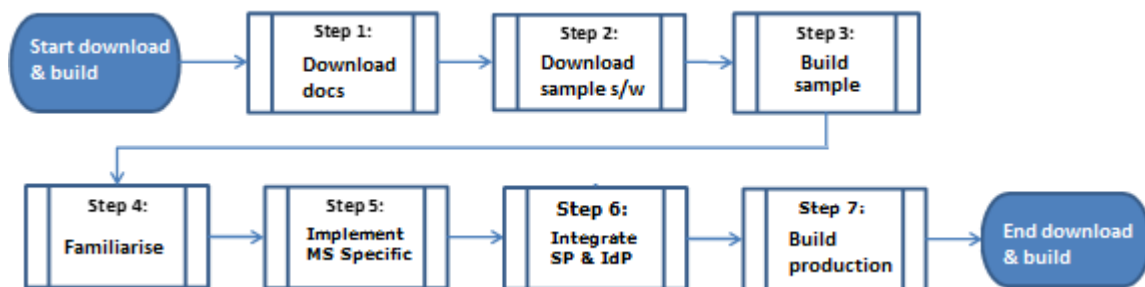
**Purpose:** To implement an eIDAS-Node that can either request (via an eIDAS-Node Connector) or provide (via an eIDAS-Node Proxy Service) cross-border authentication.

**Actor:** eIDAS-Node Provider

**Process:**

**eIDAS-Node Provider:**

1. Downloads the technical installation and configuration documentation.
2. Downloads the sample eIDAS-Node software.
3. Builds the sample eIDAS-Node software according to the documentation.
4. Familiarises themselves by running the sample eIDAS-Node software.
5. Implements their Member State Specific Parts.
6. Integrates their SP and National IdP.
7. Builds and integrates a production eIDAS-Node.



**Figure 3: Step 3: Download and build**

### 3.5. Step 4: Test implementation

**Purpose:** To verify the stability of the eIDAS-Node and communication with its SP and IdP.

**Actor:** eIDAS-Node Provider

**Process:**

The eIDAS-Node Provider performs tests according to their in-house testing strategy.

**3.6. Step 5: Test interoperability readiness**

**Purpose:** To verify that the deployment of an eIDAS-Node is ready to send/receive authentication requests/responses to/from other eIDAS-Nodes.

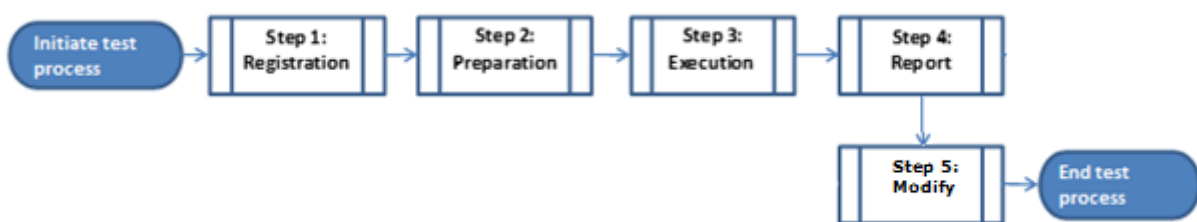
**Actors:**

- eIDAS-Node Provider; and
- CEF eID Support Team

**Process:**

For detailed information on the steps to perform to participate in the Interoperability readiness testing service see the **CEF eID Interoperability readiness testing Service Offering Description**. The following is an outline of the process.

1. eIDAS-Node Provider and CEF eID Support Team complete the **Registration** procedure.
2. eIDAS-Node Provider and CEF eID Support Team complete the **Preparation** procedure to prepare the eIDAS-Node implementation and the CEF eID testing platform in readiness for testing.
3. CEF eID Support Team runs the tests and generates the report in accordance with the **Execution** procedure.
4. CEF eID Support Team Provide and publish the test report in accordance with the **Report** procedure.
5. As necessary eIDAS-Node Provider modifies their eIDAS-Node in accordance with the report recommendations produced by the CEF eID Support Team.



**Figure 4: Step 5: Test interoperability readiness**

**3.7. Step 6: Operate**

**Purpose:** To operate an eIDAS-Node as part of the eID network to enable cross-border authentication.

**Actor:** eIDAS-Node Provider

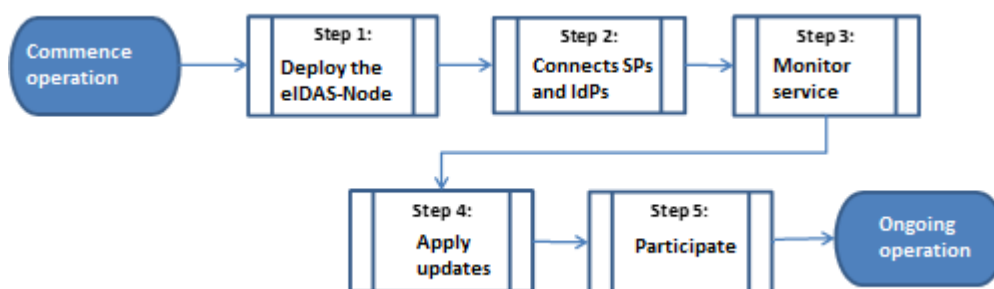
**Process:**

eIDAS-Node Provider:

1. Deploys the eIDAS-Node.
2. Connects new Service and Identity Providers as and when required.
3. Monitors the service on an ongoing basis and reports any Incident, Request, Request for Change and Security Incident to the CEF eID Support Team as described in the **CEF eID Service Desk – Service Offering Description**.
4. Applies updates and patches issued by the CEF eID Support Team as and when necessary to ensure that the service is always up to date and in line with the Technical Specifications.

For the sample implementation it is intended that there will be two major releases announced three months in advance but that will take place around April and September every year. In-between these releases there may be minor releases, mainly dealing with bug fixes, and will be managed in an agile way.

5. Regularly participates as a member of the eID Community to keep abreast of developments.



**Figure 5: Step 6: Operate**

## 4. Terms and conditions

### 4.1. Financial implications, compensation and public procurement

This Service Offering Description does not create any financial obligations towards the Commission; in particular, no transfer of funds or other resources from the Commission is required for any of the actions described herein. No compensation claims can be based on any provision of this Service Offering Description.

The Commission will execute its tasks described herein on the basis of their existing mandates, i.e. the Connecting Europe Facility.

### 4.2. Intellectual Property Rights

This Service Offering Description does not alter the intellectual property rights of the Commission on the CEF eID sample implementation, which is provided to Member States under the terms and conditions of the applicable EUPL licence.

### 4.3. Further Provisions and Limitations

The technical requirements, and, where relevant, timelines for the agreed tasks are set out in this section

- Maintenance of the CEF eID sample implementations based on the eIDAS technical specifications;
  - DIGIT will provide the CEF eID sample implementation in accordance with the eIDAS technical specifications available at that time and in accordance with the changes approved by the Operational Management Board set up under the CEF governance.
- Long-term support CEF eID sample implementations based on the eIDAS Technical implementation;
  - DIGIT will provide the CEF eID sample implementation and following versions based on the necessary changes approved under the CEF Governance arrangements. Regarding the long-term support, as keeping the security of the node is a Member State responsibility it is presumed that the security updates are done by the Member State as soon as possible. Regarding the other CEF eID Sample Implementation releases, DIGIT will support each version for a timeframe of six months while the Member State users evaluate, test and update the new version. This should not impact decisions of the Member States to adopt or not new optional features.
- When available, DIGIT shall publish on CEF Digital the middleware components for integration by Member States into their implementation. DIGIT shall not be responsible for the MW components.
- Documentation and technical support for the above sample implementation.
  - DIGIT will provide for the CEF eID sample implementation documentation and technical support.
  - DIGIT will provide third line support at the request of the Member State.

## 5. Contact information

CEF eID Support Team

By email: [CEF-EID-SUPPORT@ec.europa.eu](mailto:CEF-EID-SUPPORT@ec.europa.eu)

Standard Service: Normal EC business hours