



Funded by the European  
Commission

## **CEF eInvoicing conformance testing service**

### **Process Overview Description**

# Table of Contents

- 1. HOW TO USE THE CONFORMANCE TESTING SERVICE STEP BY STEP ..... 4**
- 1.1. Public entities, solution and service providers and software owners ..... 4
- 1.2. Process Overview ..... 4
  - 1.2.1. Web form upload (only for sender scenario) ..... 5
  - 1.2.2. Web service (only for sender scenario) ..... 5
  - 1.2.3. eDelivery ..... 5
- 1.3. Processes steps for eDelivery (AS4) method ..... 6
  - 1.3.1. Step 1: Registration ..... 6
  - 1.3.2. Step 2: Preparation ..... 10
  - 1.3.3. Step 3: Execution & report feedback ..... 13
- 2. CONTACT INFORMATION ..... 19**

European Union, 2020

Reuse of this document is authorised provided the source is acknowledged. The Commission's reuse policy is implemented by Commission Decision 2011/833/EU of 12 December 2011 on the reuse of Commission documents

The CEF eInvoicing Conformance testing Process Overview Description is intended for solution and service providers and public entities that need detailed instructions for using the Conformance testing Service. This document is to be used as an extension of the eInvoicing Conformance testing Service Offering Description (SOD).

# 1. HOW TO USE THE CONFORMANCE TESTING SERVICE STEP BY STEP

This section describes the way users can use the CEF eInvoicing Conformance testing Service.

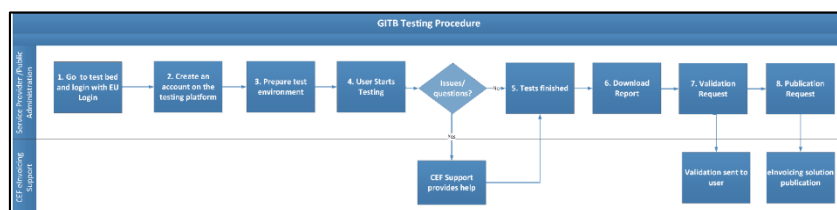
## 1.1. Public entities, solution and service providers and software owners

Public entities, solution and service providers and Solution Owners have the following responsibilities in the context of the CEF eInvoicing Conformance testing Service:

- Test the invoice compliance against the core invoice specifications;
- Perform the test as evidence for their INEA funded project;
- Provide (on a voluntary basis) details of their solution to the Service Desk, so that they are listed on the [eInvoicing Conformant Solutions page](#).

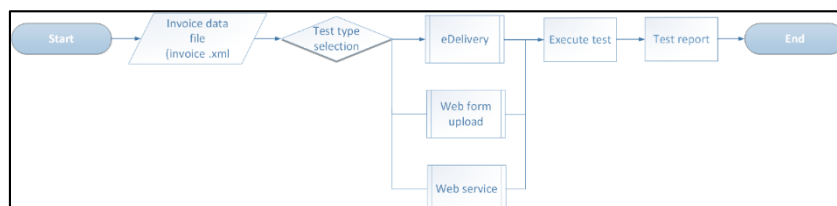
## 1.2. Process Overview

The figure below presents the main steps of the CEF eInvoicing Conformance testing Service process. Each process step is detailed in the next sections.



The figure below presents the technical options which any user can choose to apply for conformance testing. The sender scenario option starts with a file of an invoice in .xml format (hereafter called invoice.xml) issued by the user's system. Depending on the choice the user makes, he will need to perform the below steps (described on the picture).

These steps are described in the following sections.



**Remark:**

*If tests are conducted for INEA grants purposes, it is necessary to use the eDelivery methods (AS4) for the test results, as only the eDelivery testing sessions are recorded in the TestBed and can be validated or downloaded at a later stage if needed.*

### 1.2.1. Web form upload (only for sender scenario)

If the user chooses to apply for the Conformance testing Service via web form upload, he can request validation via uploading the invoice.xml file(s) through <https://www.itb.ec.europa.eu/invoice/upload>. This service is provided to all users (anonymous). Once the eInvoice is uploaded, it is validated and a detailed report is presented to the user, which can be downloaded and cross-checked against the submitted content.

### 1.2.2. Web service (only for sender scenario)

If the user chooses to apply for the Conformance testing Service via web service, he can request the validation of an invoice via a web service call to a GITB-compliant content validation service. The web service (WSDL) is available at:

<https://www.itb.ec.europa.eu/invoice/api/validation?wsdl>

To facilitate the use of the web service, the user needs to contact the [Service Desk](#) to obtain the relevant configuration files needed for the SOAP UI test case.

### 1.2.3. eDelivery

The eDelivery (AS4) option implies that at least one user is registered in the TestBed (see section §1.3.1 - Step 1: Registration).

#### *eDelivery AS4 validation (For both sender and receiver scenarios)*

- The user can choose to **send** an eInvoice for conformance testing via *eDelivery AS4*. If the message arrives successfully and the validation process is completed, the validation report can be checked or downloaded on the TestBed portal.
- The user can also choose to **receive** an eInvoice for conformance testing via *eDelivery AS4*. The testing platform (or TestBed) then sends an eInvoice to the user's AS4 gateway. In case the user needs certification for the successful receiver scenario for INEA grants, he is responsible for uploading the relevant pieces of evidence in the TestBed platform.

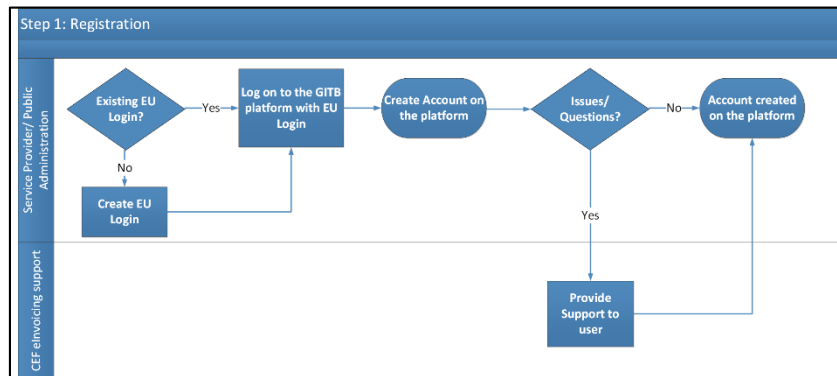
A test scenario can be executed after the user logged into the TestBed at <https://www.itb.ec.europa.eu/cef/itb/#/login>, using assigned credentials.

## 1.3. Processes steps for eDelivery (AS4) method

### 1.3.1. Step 1: Registration

**Purpose:** to register the user accounts and organisations/systems on the test platform. This registration is only required when applying for the Conformance testing Service via the [AS4 eDelivery](#) protocol.

The overview of the registration process is shown in the diagram below:



#### Process:

##### 1. Open the TestBed Welcome page

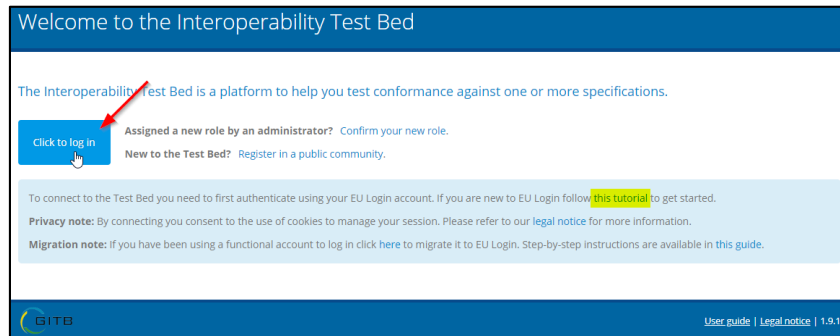
<https://www.itb.ec.europa.eu/cef/itb/#/login>

##### 2. Login

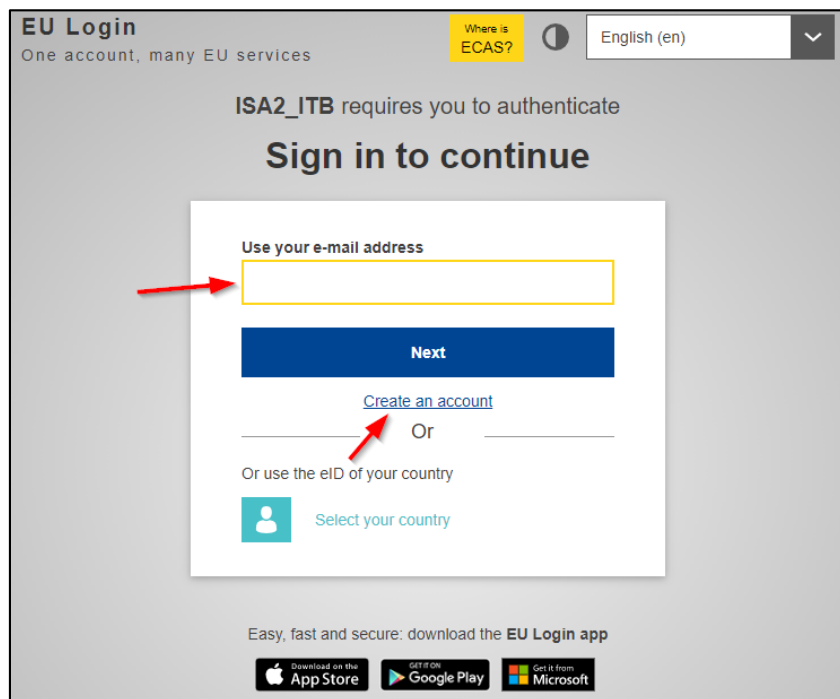
To be able to create an account on the GITB TestBed platform, the user must have an EU Login account. If the user does not have an EU Login account, he can create one on the EU Login [page](#). If

the user needs more help regarding EU login, he can use the link to the [EU Login tutorial](#) on the TestBed Welcome page.

2.1. The user clicks on the **Click to log in** button:

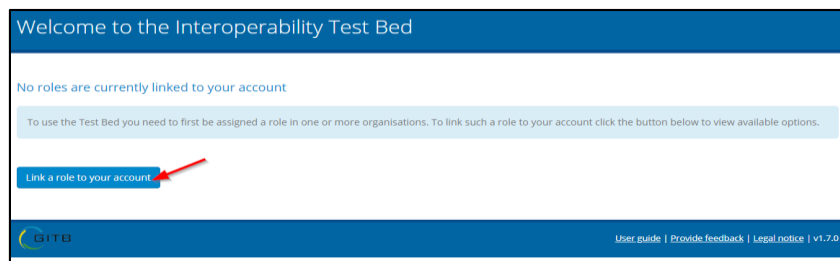


2.2. The user provides his EU Login account credentials or creates his EU Login account:



### 3. Choose role/Create Organisation

3.1. If the user is already logged in but does not have any assigned role or registered Organisation, he clicks on the **“Link a role to your account”** button:



3.2. The user chooses the option **Register in a public community**

3.3. The user provides the **Token** for joining the **CEF elnvoicing community** (token: cefeinvoicing)

3.4. The user starts registering his organisation by filling the required fields.

- **Short name:** a short name for his organisation to appear in reports;
- **Full name:** the full name of his organisation;
- **Access Point (gateway) implementation:** the AS4 software implementation and version he uses.
- **INEA Action Number:** if the user's tests are initiated under an INEA action, this field is **mandatory** and should be filled with the INEA action number.

*Remark: The parameters signed by “ \* ” are mandatory, the test will not start if the user does not fill in the information*

4. The user clicks on **Complete:**

Link a new role to your account

I want to ...  Confirm a role assigned to me by an administrator  
 Register in a public community  
 Migrate an existing account to my EU Login account

Select the community you want to register for and provide the requested information. If your community is not listed you need to request from an administrator to register you on your behalf.

Privacy note: By registering you grant your consent to link your name, email and EU Login user ID to your new administrator account.

Community

Name	Description
CEF elnvoicing community	The exchange of electronic invoices using the Universal Business Language (UBL) 2.1 and Cross Industry Invoice (CII) syntaxes.

\* Registration token: \*\*\*\*\*  
You can find information about how to get token, in the Service Offering Document here: [CEF elnvoicing Conformance testing.](#)

Organisation details

\* Short name: ACME

\* Full name: ACME Corporation

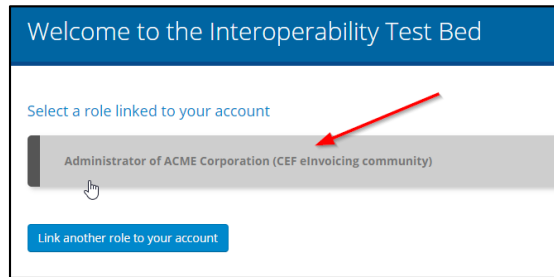
\* Access Point (gateway) implementation: Domibus 4.1.3

INEA Action Number: 2020-EU-IA-0123

Complete Cancel

4.1. The user chooses his new linked role by clicking on it



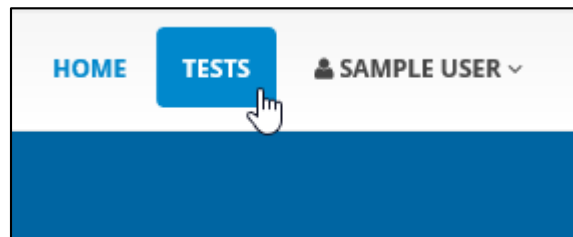


This completes the login process, and makes the user enter to the system as an organisation administrator.

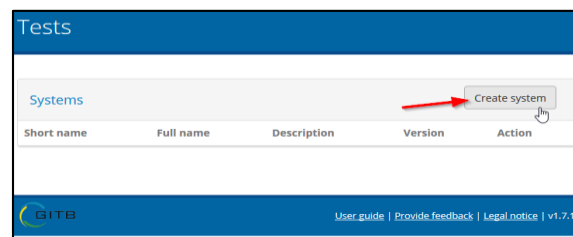
### 1.3.2. Step 2: Preparation

**Purpose:** to prepare the test scenario on the TestBed.

1. The user logs on to the GITB platform on <https://www.itb.ec.europa.eu/cef/itb/#/login> with his EU Login.  
For more information about EU Login, check §1.3.1 - Step 1: Registration.
2. The user clicks on the **TESTS** button on the menu bar:



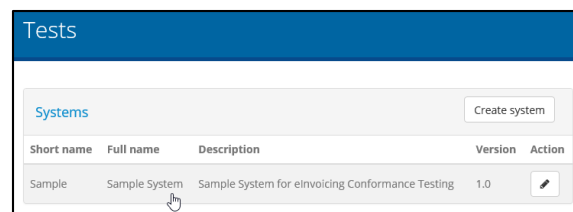
3. The user clicks on the **Create system** button:



4. The user fills in the details of the new system information and clicks on **Save**:

A screenshot of the 'Create system' form. It has a title 'Create system' and four input fields: '\* Short name:' with the value 'Sample', '\* Full name:' with the value 'Sample System', 'Description:' with the value 'Sample System for invoicing Conformance Testing', and '\* Version:' with the value '1.0'. At the bottom right, there are 'Save' and 'Cancel' buttons.

5. The user clicks on the newly created system:

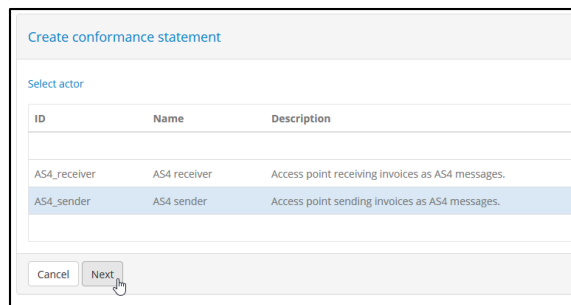


6. The user clicks on the **Create conformance statement** button:

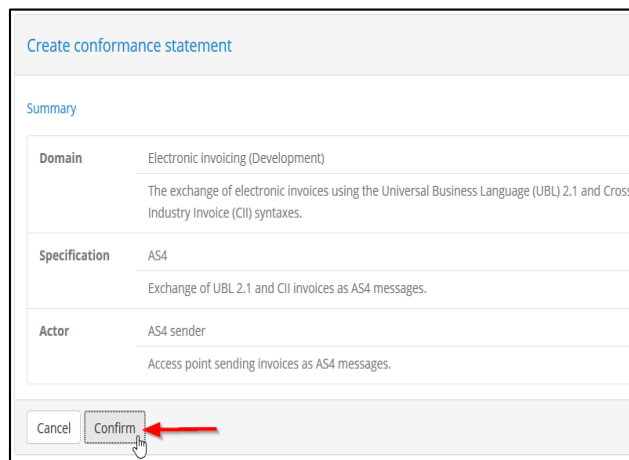


7. The user chooses the **actor** for his scenario and clicks on **Next**:

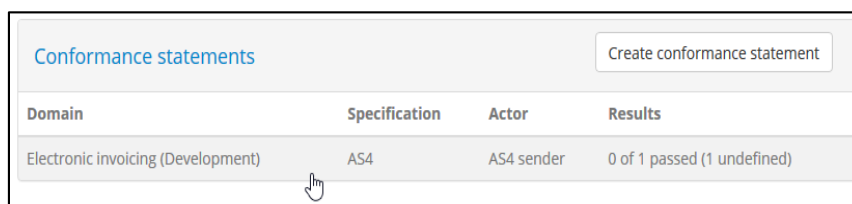
- SENDER scenario> **AS4\_sender**  
The user's access point sends messages to the TestBed with the eInvoices he wants to test.
- RECEIVER scenario> **AS4\_receiver**  
The TestBed sends messages to the user's access point with sample eInvoices, so that he can test the reception and processing of compliant eInvoices in his eInvoicing system.



8. The user clicks on **Confirm** on the Summary screen:



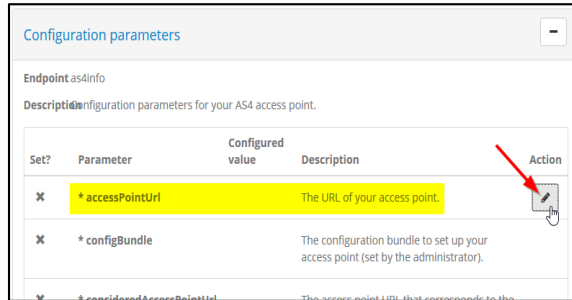
9. The test is now ready to be configured, the user clicks on the conformance statement created:



10. The user expands the Configuration parameters with the **Visible/Hidden** button:

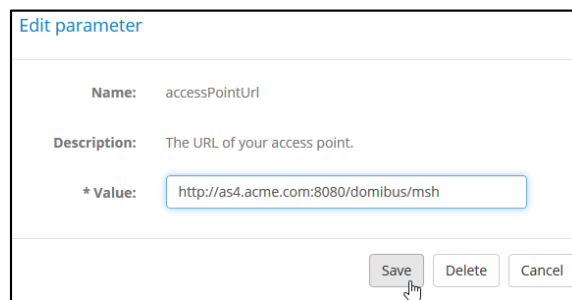


and sets the **accessPointUrl** parameter by clicking on the  (edit) button:



11. The user inputs his Access Point public URL into **accessPointUrl** and clicks on **Save**:

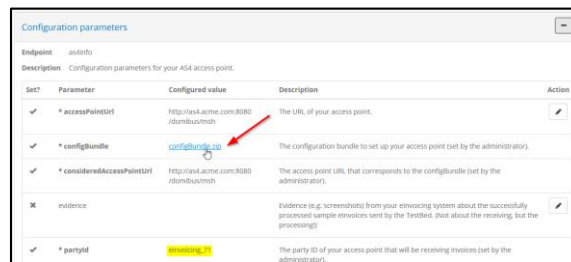
**Remark:** This is a mandatory parameter; the test will not start if the user does not fill in the information.



12. The user downloads his configuration package.

If the user saved his valid **accessPointUrl** parameter, the TestBed generates a Party ID and a configuration package for him.

The user refreshes the Tests page and expands the **Configuration parameters** until he finds the downloadable package in the **configBundle** parameter, then he clicks on it for downloading.



The user has now completed the preparation and continues with the execution as described in §1.3.3-Step 3: Execution & report feedback.

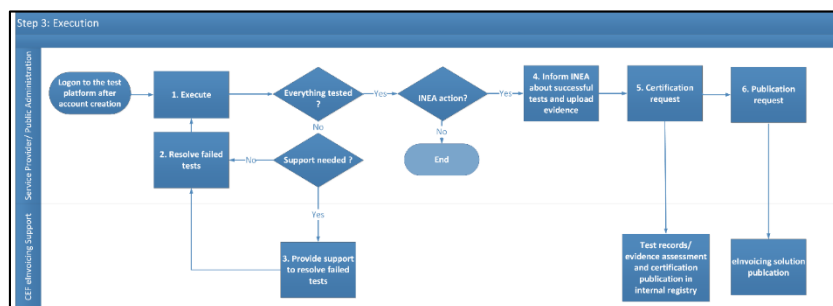
If the user needs support while conducting the test, he can contact the CEF elnvoicing team ([CEF-EINVOICING-SUPPORT@ec.europa.eu](mailto:CEF-EINVOICING-SUPPORT@ec.europa.eu)). For contact information see also §2 - Contact Information.

### 1.3.3. Step 3: Execution & report feedback

**Purpose:** to execute the conformance tests and generate a test report.

1. The user executes the conformance tests using the testing platform.
2. The user resolves the failed tests (with or without the support of the CEF eInvoicing Service Desk).
3. The CEF eInvoicing Service Desk provides technical support to the user during the execution of the conformance tests.
4. If the test was performed under an INEA action, the user requests certifying from the CEF eInvoicing Service Desk, once all conformance tests have successfully passed and the required evidence was uploaded.
5. If the user requested funding from INEA, the CEF eInvoicing Service Desk assesses the recorded test sessions and the provided evidence. If the results are found correct, the CEF eInvoicing Service Desk logs the successful test record in an internal register which is shared with INEA.
6. On a voluntary basis, the user can promote his solution on the [CEF Digital eInvoicing page](#). To do so, the user must share the solution information with the CEF eInvoicing Service Desk (information listed on the page).

The overview of the Execution process is shown in the diagram below:



The user can validate an eInvoice once the registration and the preparation on the GITB platform are completed and when he has configured his Access Point and eInvoicing system. To do so the user shall download and use the configuration package that contains the required files (manual, sample SOAP project, a private key, a Pmode and a Truststore). The package can be downloaded from the configBundle parameter (see configuration section at § 1.3.2 - Step 2: Preparation - Step 12.), which needs to be adapted to the user's environment. Non-Domibus users should use the Pmode as a guideline for setting up his environment.

1. The user logs on to the GITB platform at <https://www.itb.ec.europa.eu/cef/itb/#/login> with his EU Login account credentials.  
For more information about EU Login, check §1.3.1 - Step 1: Registration.
2. The user selects the required role (organisation) linked to his account.
3. The user clicks on the **TESTS** button.
4. The user selects the System created in the preparation phase.
5. The user selects the Conformance statement created in the preparation phase.

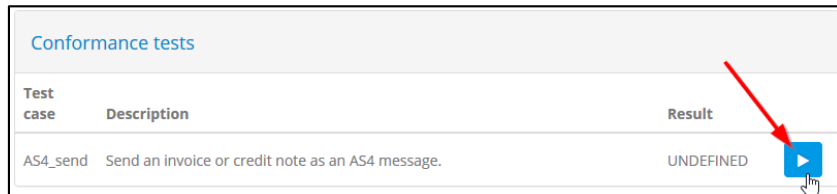
- The user verifies that the configuration parameter was set correctly as described in the preparation phase (**accessPointUrl**) and that other mandatory parameters were generated successfully by the TestBed (configBundle, consideredAccessPointUrl, partyId).

The next steps depend on the chosen scenario of the Conformance statement:

- Sender scenario:**

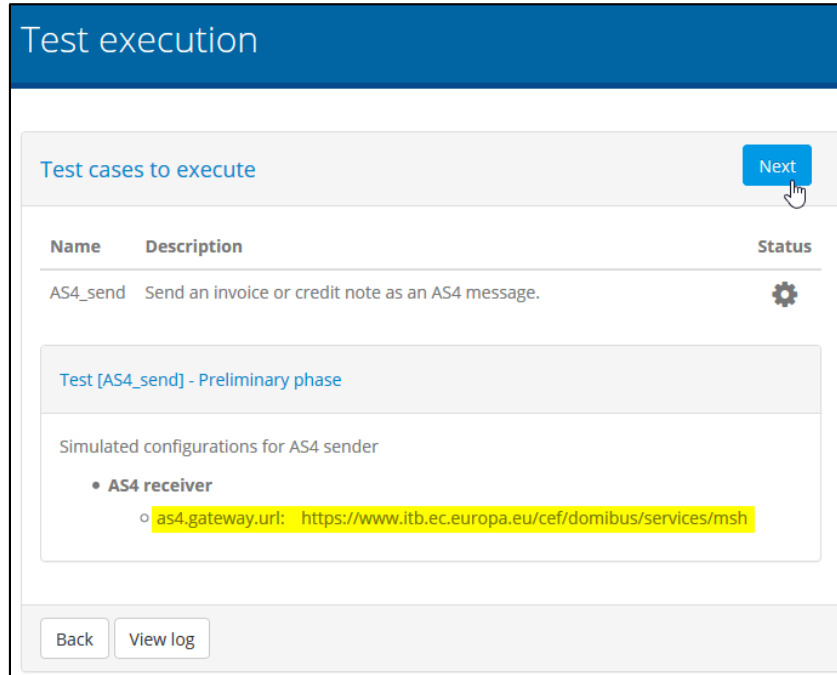
The user is the **sender** and will send an AS4 message using the eInvoice intended to be tested to the GITB TestBed which is the receiver.

- The user chooses the only available Test Case (**AS4\_send**) and opens it by clicking on the **Play** button:



**Remark:** If any mandatory parameter is missing for the test, the user will get a list of missing parameters in the next screen instead of the screen below. The user must fill them before continuing with the further steps.

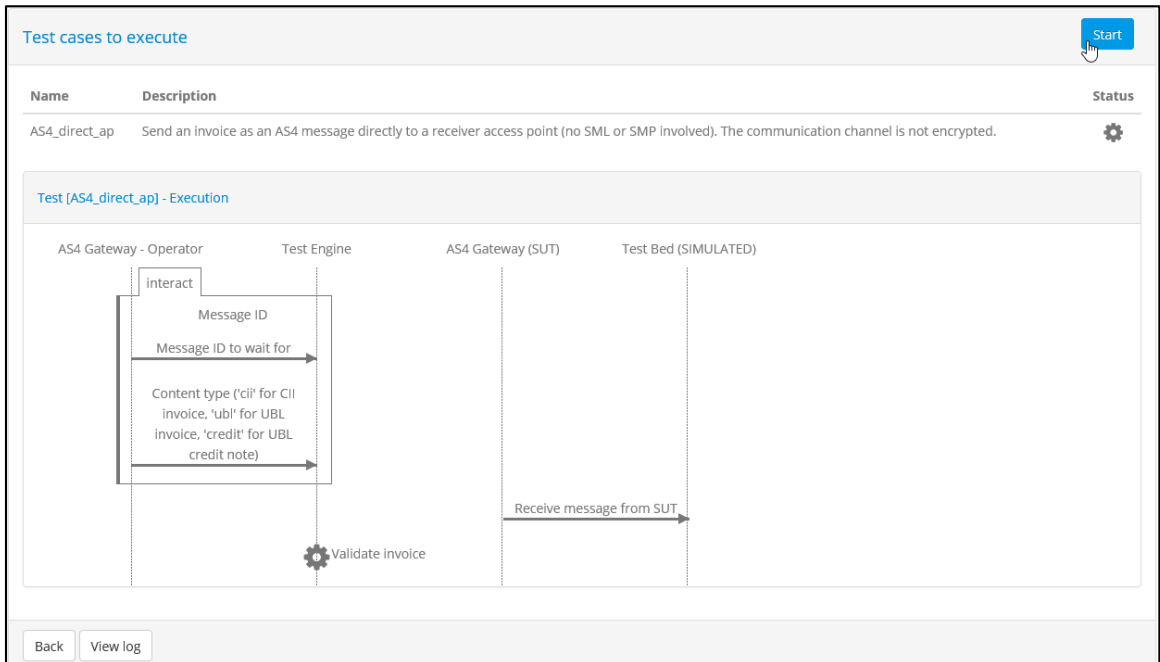
On the **Test execution** page, the user can find the required data he needs for configuring his AS4 access point. The user must note the **as4.gateway.url** of the TestBed (Receiver) Access Point. He will use this when configuring the PMode of his (Sender) Access Point.



- The user updates (if needed) and installs the Pmode downloaded in the configuration package, at preparation phase on his (Sender) Access Point.
- The user installs the Truststore downloaded from the configuration package, on his (Sender) Access Point: by default, the Truststore password is set to "test123".

- The user installs the Keystore downloaded from the configuration package, on his (Sender) Access Point: by default, the Keystore password is set to “test123”.

2. The user clicks on the **Next** button to complete and clicks on the **Start** button to start the test:



3. Once the process starts, the **Server interaction** screen will be displayed:

The screenshot shows a 'Server interaction' form with the following fields and buttons:
 

- A header 'Server interaction'.
- A label 'Message ID to wait for' above a text input field.
- A label 'Content type ('cii' for CII invoice, 'ubl' for UBL invoice, 'credit' for UBL credit note)' above another text input field.
- A 'Send' button at the bottom right.

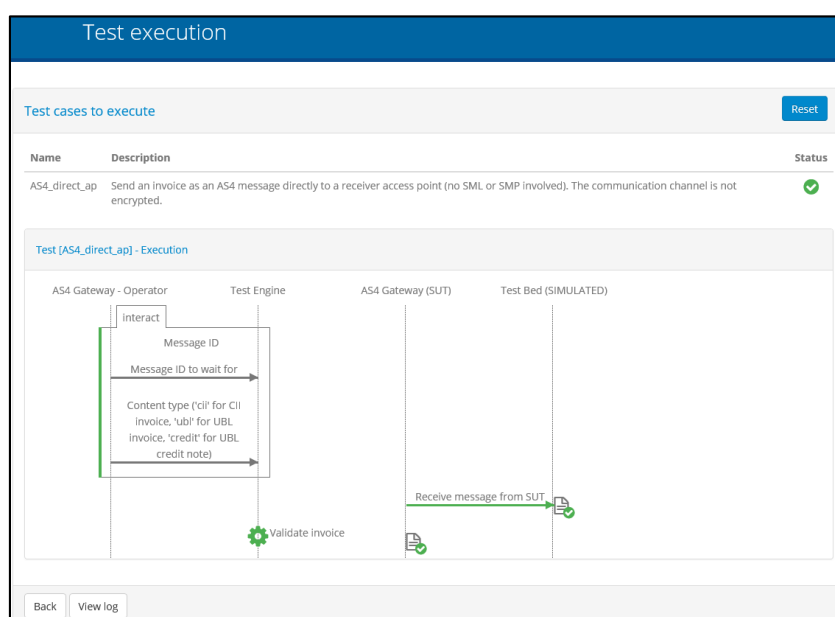
4. At this point the user can start his Access Point and send an AS4 message to the TestBed with the eInvoice in the attachment. If needed, he can use the SOAPUI project provided by the CEF eInvoicing Service Desk as a template.
5. The user writes down the resulting **messageID**.
6. The user inputs the messageID in the **Server interaction** screen, together with the chosen eInvoice format (**cii** or **ubl**) and clicks on **Send** to execute:

### Server interaction

**Message ID to wait for**

**Content type ('cii' for CII invoice, 'ubl' for UBL invoice, 'credit' for UBL credit note)**

- The test status will then be displayed. If all phases were successful, they will be displayed in **green** as shown in this successful test example below:



- If any phase is marked with a red cross, this means it was unsuccessful. The user clicks on the document with the red **x** to get detailed information on the error.
- If all phases are finished successfully, the user can check or download his report of the performed test. The user navigates back to the **Performed Tests page** to find his test results.
- If the test was performed under an INEA action, the user should request certification from CEF eInvoicing Service Desk for INEA to accept his test results.
- If the user's solution successfully passed all the Conformance testing and the results were certified, the user can promote (on a voluntary basis) his solution on the [CEF Digital eInvoicing page](#). To do so, the user must share the solution information with the CEF eInvoicing Service Desk (information listed on the page).



- **Receiver scenario:**

The user is the **receiver** and receives an AS4 message with a sample compliant eInvoice, from the GITB TestBed who is the sender.

1. There are multiple sample eInvoices in the GITB TestBed repository. The user can select any of them according to his need or his eInvoicing system requirements.

The user chooses any of the available Receiver test cases and opens it by clicking on the **Play** button:

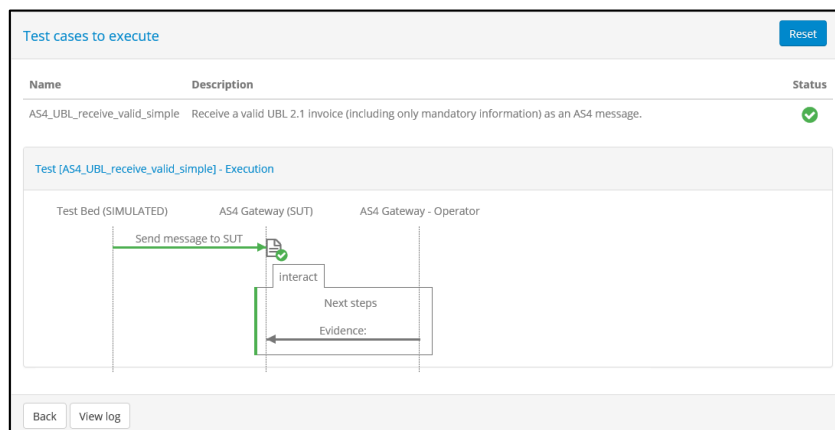
**Remark:** For INEA grants purposes, it is sufficient to fulfil one of the test cases.

Test case	Description	Result
AS4_UBL_receive_valid_simple	Receive a valid UBL 2.1 invoice (including only mandatory information) as an AS4 message.	UNDEFINED
AS4_UBL_receive_valid_simple_vat	Receive a valid UBL 2.1 VAT invoice (including only mandatory information) as an AS4 message.	UNDEFINED
AS4_UBL_receive_valid_complete	Receive a valid UBL 2.1 invoice (including mandatory and	UNDEFINED

**Remark:** If any mandatory parameter is missing for the test, the user will get a list of missing parameters in the next screen instead of the screen below. The user should fill them before moving to the next steps.

The user clicks on the **Next** button to complete and clicks on the **Start** button to start the test. The TestBed then sends the chosen sample eInvoice in an AS4 message to his Access Point.

2. If the message was received successfully, it will be displayed in **green** as shown in the successful test example below:



3. If any of the phases is marked with a red **x**, it means that it was unsuccessful. The user should click on the document with the red **x** to get detailed information on the error.
4. After successfully completing one of the receiving test scenarios, the user can check or download his report of the performed test. The user navigates back and opens the **Performed Tests page**, where he will find all his test results.
5. If the test was performed under an INEA action, the user should request the CEF eInvoicing Service Desk to certify the test results so that INEA can accept his test results. Note that CEF eInvoicing Service Desk will also request the user's test evidence of the **processing** of the received sample eInvoice to certify that the user's receiver action was

successfully completed. This test evidence can consist of screenshots from the user's **eInvoicing system**, where the sent sample eInvoices are successfully **processed** and where it is possible to identify the sample eInvoices on the picture.

The evidence files should be uploaded into the **evidence** parameter at the Configuration parameters section on the Tests page (see configuration section § 1.3.2 - Step 2: Preparation – *Step 13*). If the user wants to provide more than one file, he can put all his files together in a zip file.

6. If the user's solution successfully passed all the Conformance testing and the results were certified: on a voluntary basis, the user can promote his solution on the [CEF Digital eInvoicing page](#). To do so, the user must share the solution information with the CEF eInvoicing Service Desk (information listed on the page).

## 2. CONTACT INFORMATION

CEF eInvoicing team

**CEF Digital:** <https://ec.europa.eu/cefdigital/wiki/x/WgPvB>

By email: CEF-EINVOICING-SUPPORT@ec.europa.eu

Support Service: 8am to 6pm (Normal EC working Days)