



Gautam Hazari and Marta Ienco

GSMA

2017-03-07

eID under eIDAS webinar

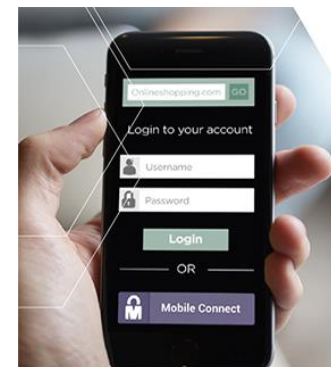
Introducing Mobile Connect

Mobile Connect is the mobile operator facilitated authentication and identity service that provides simple, secure and convenient access to online services from any device.

It uses the user's possession of the mobile device ("*Something the user has*") utilising the unique mobile number as the authentication factor and combines with other factors like an optional PIN or biometrics for added security, to verify and authenticate the user everywhere they see Mobile Connect.

Mobile Connect for Government:

- Easy to use as it uses the mobile phone for authentication (i.e. no passwords)
- Anonymous but secure log-in (no passwords to steal, improved user experience, reduce friction)
- Adds trust into digital transactions (e.g. by confirming location, user identity, usage)
- Protects privacy (operator confirm credentials, user gives consent for sharing)
- Simple and cost effective to deploy



Secure digital identity is now in consumers' hands

Convenient

Seamless consistent and simple log-in experience across all providers across any device

Secure

Authentication via trusted operators over secure regulated networks

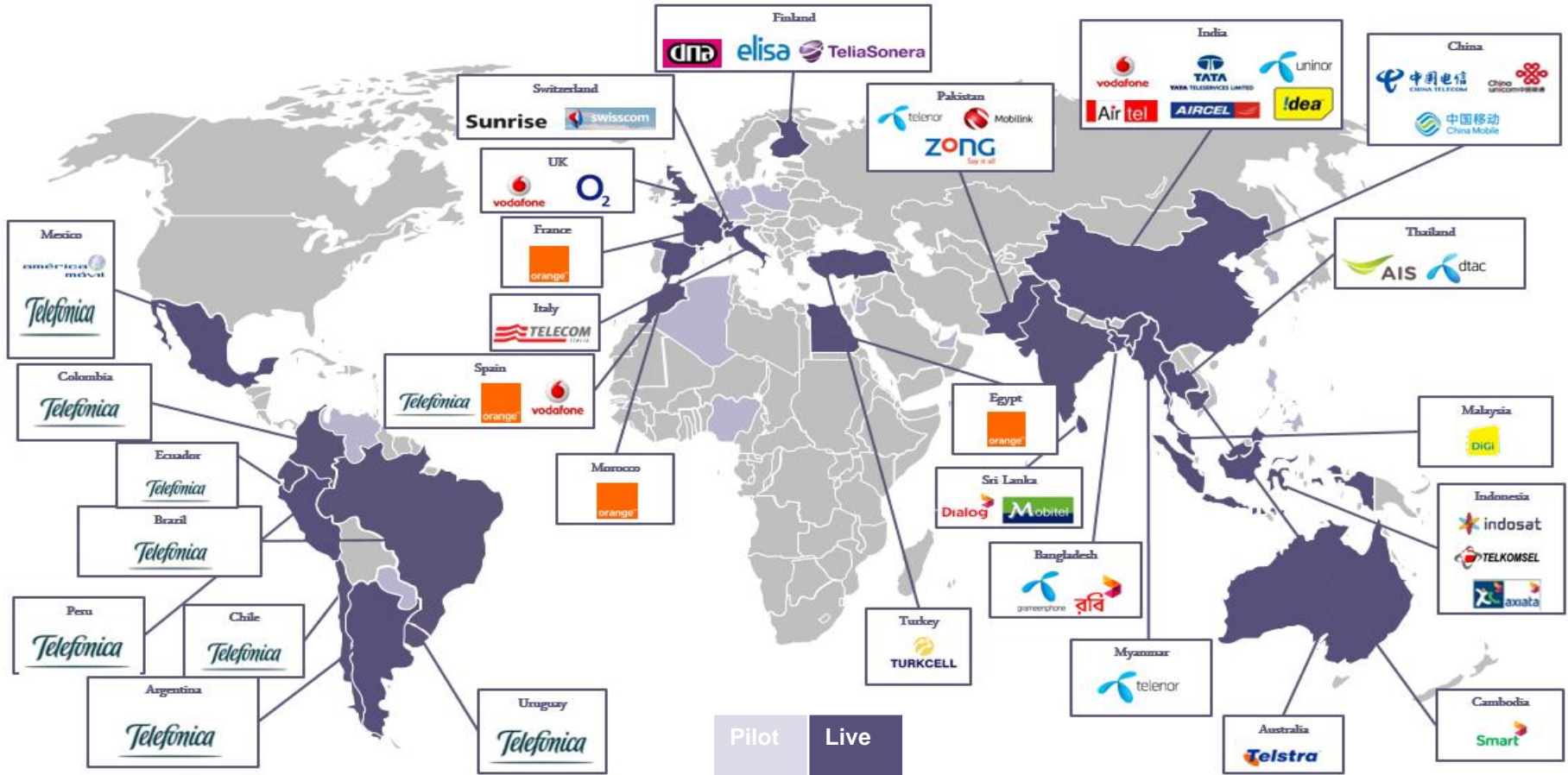
Private

No data shared without explicit consent



Increasing global footprint:

50 Operators in 29 countries & 40.9 million registered connections



High Level View: Mobile Connect for cross-border authentication

Citizens connect to national Public Service, cross borders



MARKET STATE A



Leverage existing strong authentication mechanisms, like SIM Applet

Authentication through MNO and federation using GSMA Discovery Service

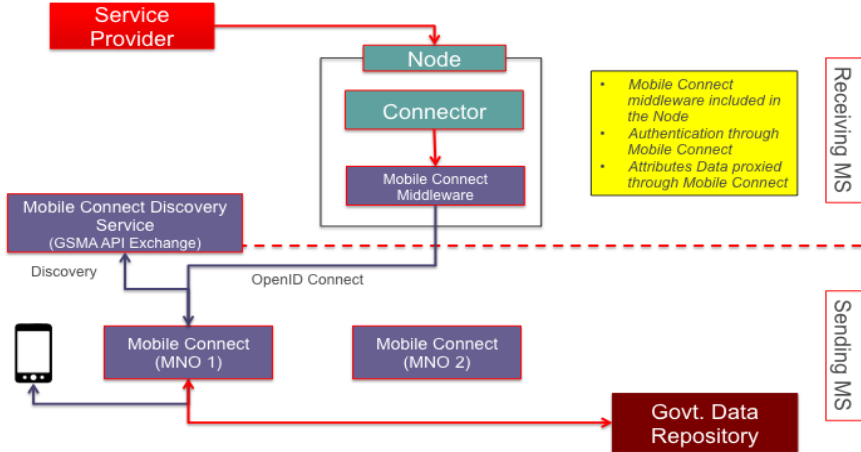
Authentication service on both ends



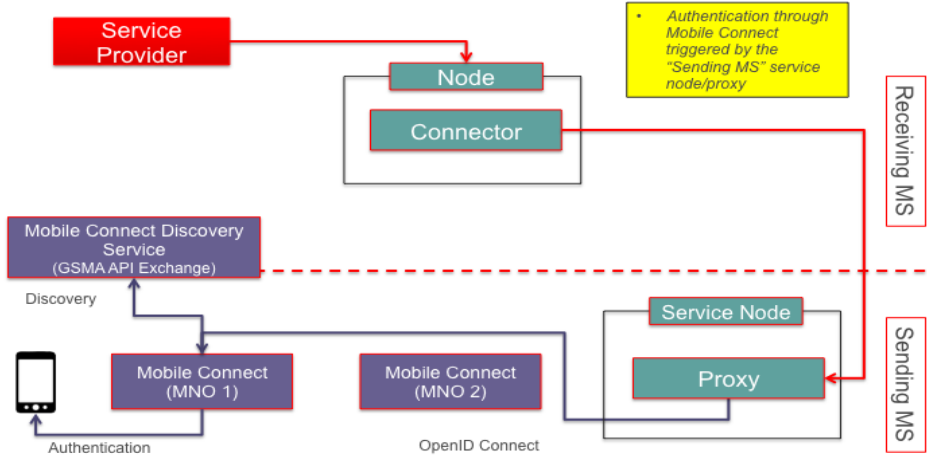
Unique user experience through Mobile Connect discovery

MARKET STATE B

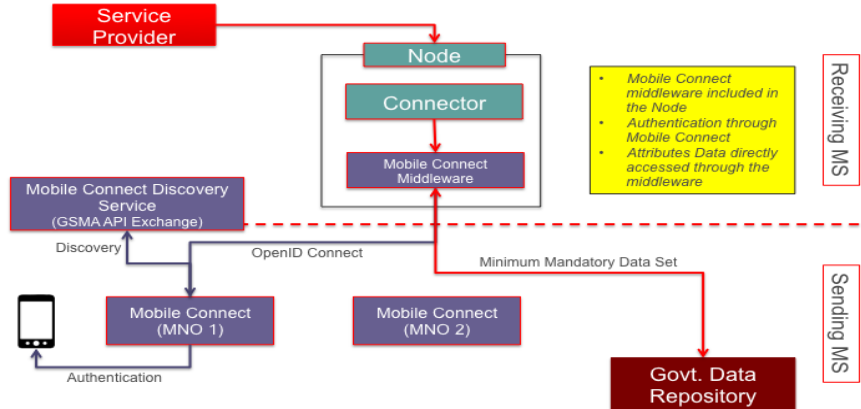
Architecture Option 1 [Middleware approach]



Architecture Option 3



Architecture Option 2 [Middleware approach]



Authentication through Mobile Connect

Attributes owned by the Govt. Repository

Attributes can be proxied through Mobile Connect or can be fetched directly – architecture flexibility