

Strengthening European Identity through Education and Culture

The Commission's Contribution to the Leaders' Working Lunch
Gothenburg, 17 November 2017

#FutureOfEurope #EURoad2Sibiu

COOPERATION ON CURRICULA DEVELOPMENT

WHAT EXISTS TODAY

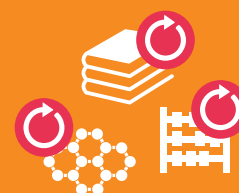
⚙️ **2006: Recommendation on Key Competences for Lifelong Learning** that defined the competences each and every citizen needs.



KEY ACHIEVEMENTS SO FAR

- ▶ The 2006 Recommendation was followed by a majority of **Member States that implemented related reforms to their educational system.**
- ▶ June 2016: the **New Skills Agenda for Europe** shed light on the need to review and update the 2006 Recommendation on Key Competences.

The latest OECD Programme for International Student Assessment (PISA) data shows that **one in five pupils** in the EU has **insufficient proficiency in reading, mathematics and science**. Between 2012 and 2015, the trend in underachievement for the EU worsened. 20% of the EU working age population have low literacy and low numeracy skills and 44% of the EU population have low or no (19%) digital competencies.



In the countries involved in the OECD Survey of Adult Skills (PIAAC) 2012, between 5% and 28% of adults are proficient at only the lowest levels in literacy and 8% to 32% are proficient at only the lowest levels in numeracy.

WHAT CAN BE DONE IN THE NEXT TWO YEARS?

- ▶ January 2018: update the **Recommendation on Key Competences for Lifelong Learning** key competences: literacy, language, science, technology and engineering and maths, digital competences, personal, social and learning competence, civic and sustainability competence, entrepreneurship and cultural awareness and expression.
- ▶ As part of the Recommendation, an **EU scoreboard** will be developed to assess the key competences.



POSSIBLE INITIATIVES WITH A 2025 PERSPECTIVE

- ▶ **Allow for comparability of curricula** and study courses across borders.
- ▶ **Set new benchmarks on basic skills** (10% of 15-year-olds do not have basic skills; current benchmark is set at 15%).