



Europe  
for Citizens

## **Results 2007-2013**

## **SUMMARY**

<b>1.</b>	<b>QUANTITATIVE INFORMATION .....</b>	<b>p.</b>
1.1.	1.1. Geographical origin of projects.....	p.
1.2.	1.2. Participants and Partners .....	p.
	1.2.1. Participants.....	p.
	1.2.2. Partners.....	p.
1.3.	Quality of the projects.....	p.
1.4.	Funding of the projects.....	p.
<b>2.</b>	<b>QUALITATIVE REMARKS.....</b>	<b>p.</b>
2.1.	2.1. Balanced coverage in geographical terms .....	p.
2.2.	Impact of the programme : a more strategic approach.....	p.
2.3.	2.3. Development of European civil society through the programme.....	p.
<b>3.</b>	<b>RATIONAL AND INNOVATIVE MANAGEMENT .....</b>	<b>p.</b>

## **ANNEXES**

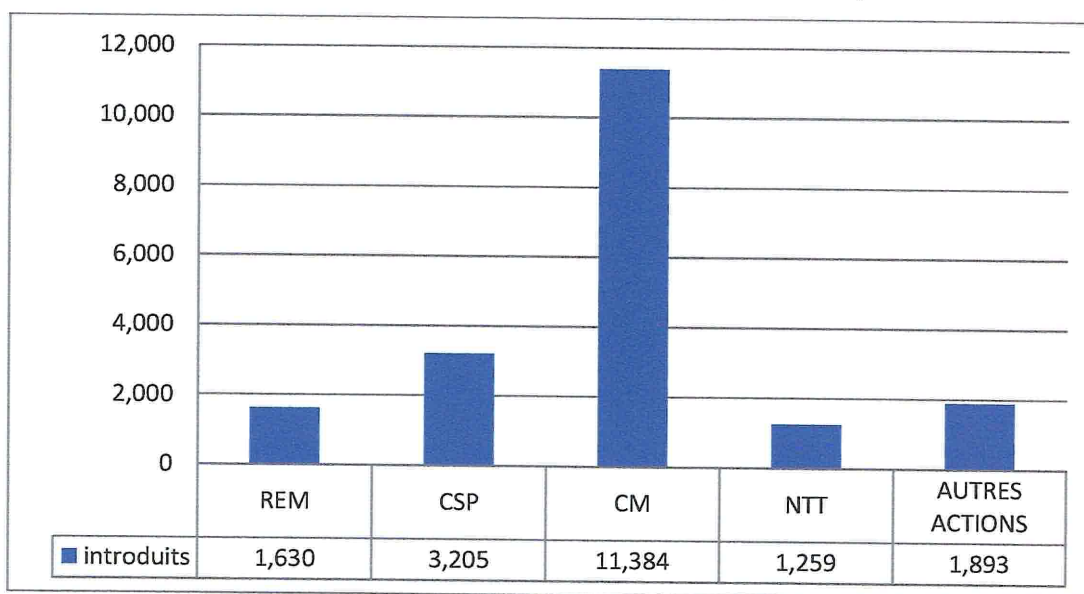
The "Europe for citizens" programme was created on **12 December 2006** by **Decision No 1904/2006/EC of the European Parliament and of the Council** and was allocated a budget of **215 million euros**. The aim was to promote active European citizenship and to bring the European Union and its institutions closer to the citizens in the Member States: "For citizens to give their full support to European integration, greater emphasis should be placed on their common values, history and culture as key elements of their membership of a society founded on the principles of freedom, democracy, respect for human rights, cultural and linguistic diversity, tolerance and solidarity. "

## 1. QUANTITATIVE INFORMATION

Over the period 2007-2013, almost **20 000 applications** were submitted under the "Europe for citizens" programme.

The four main actions of the programme - Active European Remembrance (**REM**), Active Civil Society projects (**CSP**), Town Twinning Citizens' Meetings (**CM**) and Networks of Twinned Towns (**NTT**) represented more than **90%** of that figure.

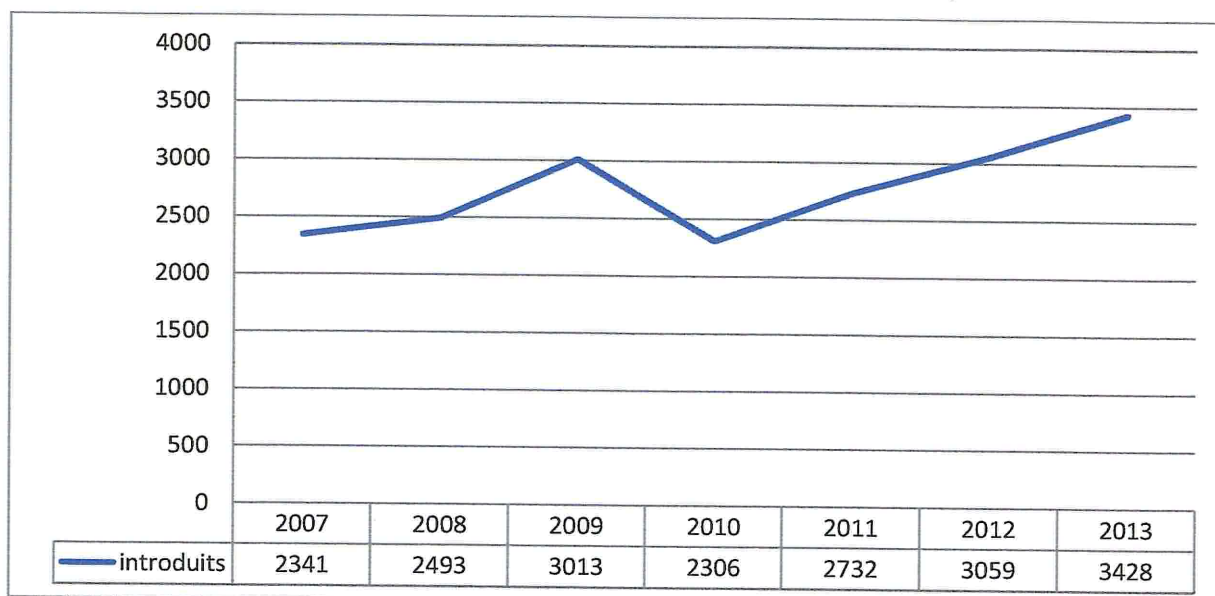
### 1. Total number of projects submitted (2007-2013)



The programme saw steady growth <sup>1</sup> in the number of **applications** of more than **45 %** between 2007 and 2013. The lion's share of applications concerned town twinning (almost two thirds of applications), an existing and well known tradition of European towns and cities.

<sup>1</sup> The drop in 2010 (see Figure 2) was the result of a technical adjustment due to the creation of a new selection calendar.

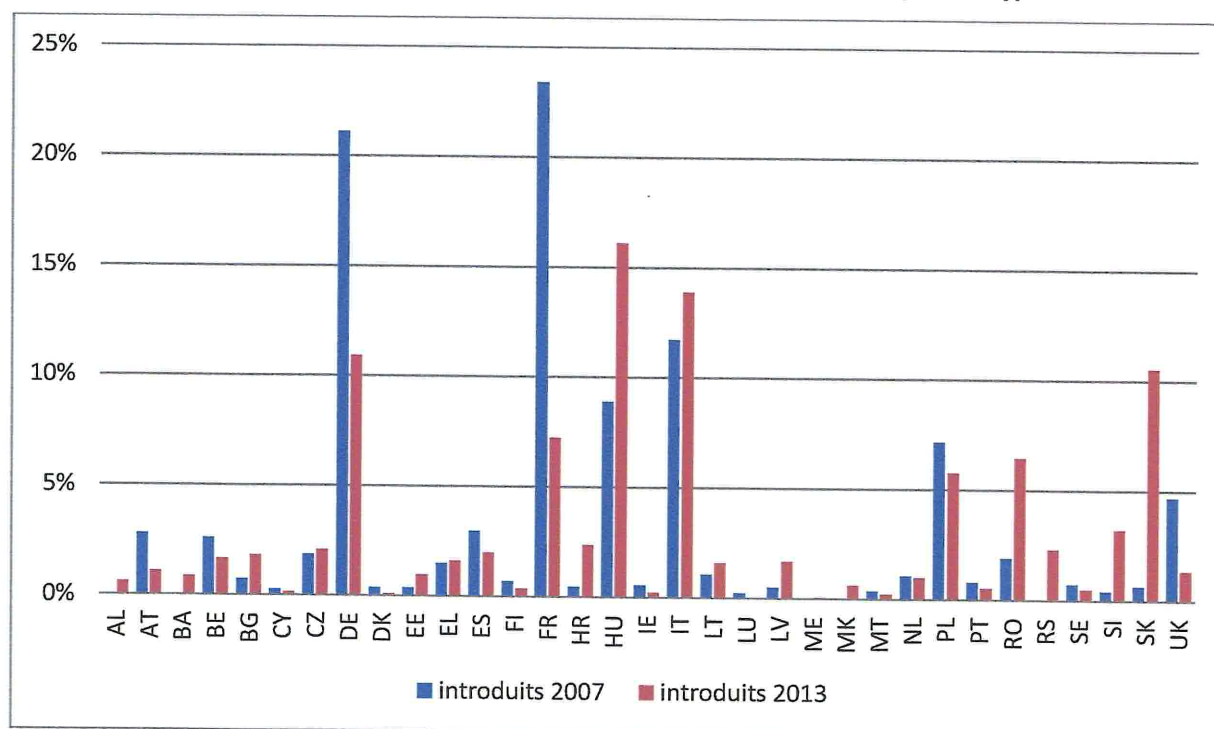
## 2. Total number of projects submitted (2007-2013)



### 1.1. Geographical origin of projects

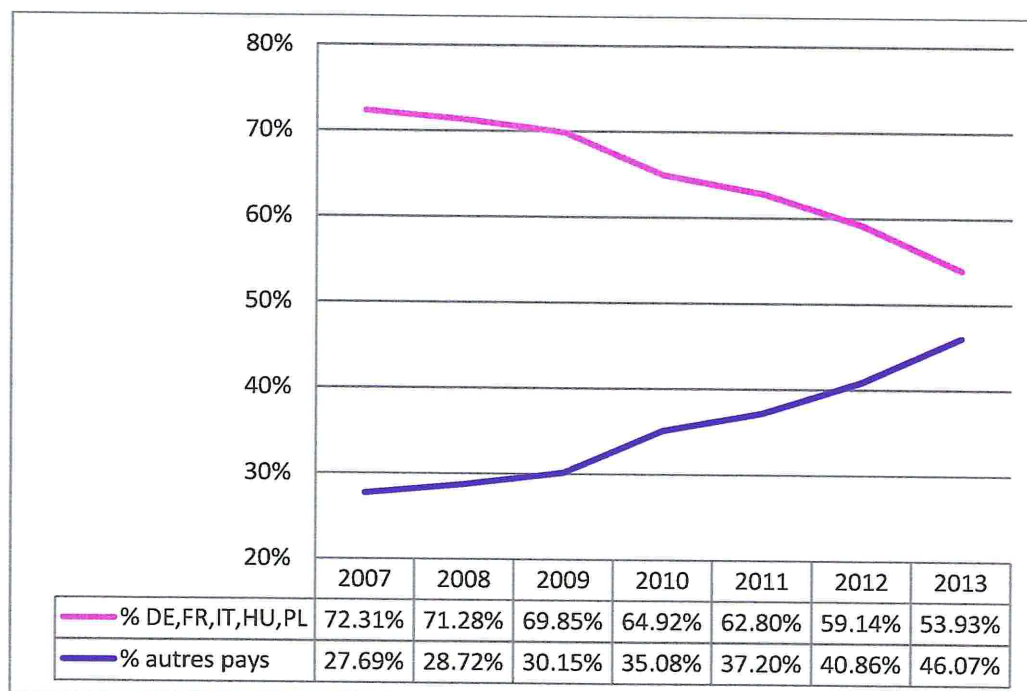
With regard to the four main actions of the programme mentioned above, **Germany** was the Member State introducing the greatest number of projects (2 791), followed by **France** (2 537), **Hungary** (2 434), **Italy** (2 265) and **Poland** (1 219).

## 3. % of projects submitted in 2013 compared to 2007 (by country)



In 2007, the 5 Member States mentioned above represented more than **70 %** of the projects submitted. In 2013, that share was **54 %**. However, the figure disguises differing realities: indeed, whilst the shares of **France** (- 16 points) and **Germany** (-10 points) and, to a lesser extent, **Poland** (-1 point)<sup>2</sup> dropped significantly, those of **Italy** (+ 2 points) and above all **Hungary** (+ 7 points) grew considerably, with Hungary accounting for the greatest number of applications submitted during the final year of the programme.

#### 4. Trend in projects submitted by DE, FR, IT, HU and PL from 2007 to 2013, compared to other countries



Contrary to the overall trend seen for these five countries, certain Member States saw significant growth, in particular **Slovakia** (+ 10 points), **Romania** (+ 5 points) and **Slovenia** (+ 3 points). Slovakia thus overtook France in terms of applications and almost caught up with Germany in absolute terms. The **Baltic countries** (Estonia, Latvia, Lithuania) tripled the number of applications over the period<sup>3</sup>.

In addition to the increases seen in certain new Member States, this general trend appears to be due to a move in the more experienced Member States away from small projects (like twinning) towards more large-scale, long-lasting and structured projects, such as **networks of twinned towns** and **civil society projects**. The share of networks thus almost tripled between 2007 and 2013, whilst, over the same period, that of town twinning fell by 30%.

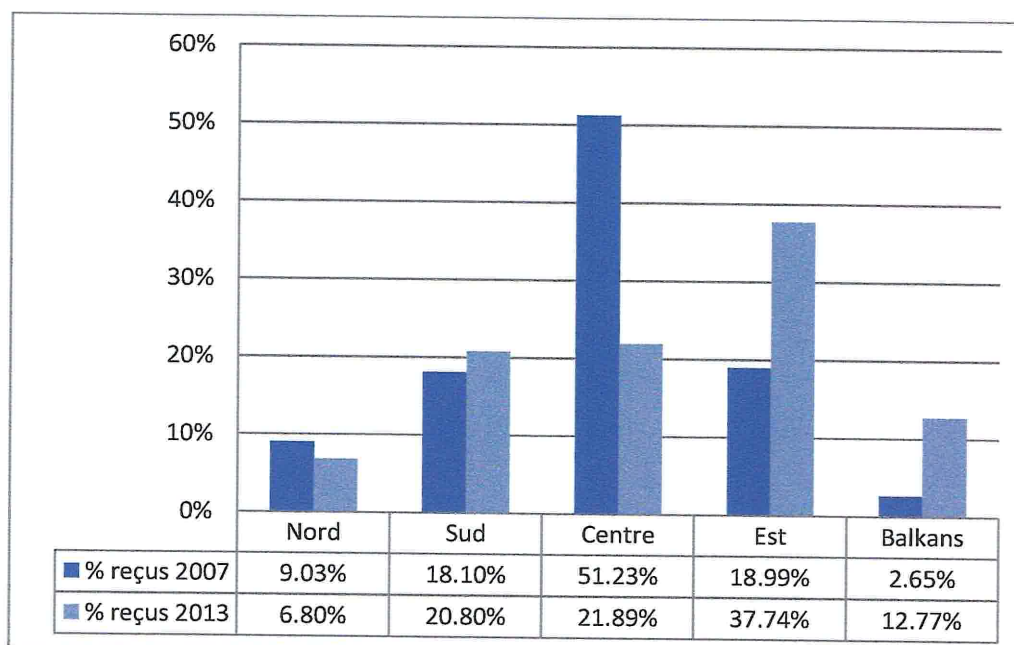
<sup>2</sup> It should be noted that Poland is the only country which has seen a drop in relative terms but an increase in absolute terms.

<sup>3</sup> However, applications from other Member States largely stagnated: Belgium, Spain, Finland, Portugal, the Netherlands (which did see an increase in absolute terms) and Sweden, or decreased: Austria, UK.



Looking at the regions from which submitted projects came<sup>4</sup> we can see that, between the first and the final year of the programme, the relative share of applications from eastern Europe and the Balkans grew and the relative share of central and northern Europe fell<sup>5</sup>.

#### 5. % of projects submitted from each geographical region in 2013 compared to 2007



<sup>4</sup> **Central Europe** : Germany, Austria, Belgium, France, Luxembourg, Netherlands

**Eastern Europe** : Hungary, Poland, Slovenia, Slovakia, Czech Republic

**Balkans** : Bulgaria, Romania, Albania, Bosnia, Former Yugoslav Republic of Macedonia, Montenegro, Serbia.

**Northern Europe** Denmark, Estonia, Finland, Ireland, Latvia, Lithuania, UK, Sweden

**Southern Europe** Spain, Cyprus, Croatia, Greece, Italy, Malta, Portugal

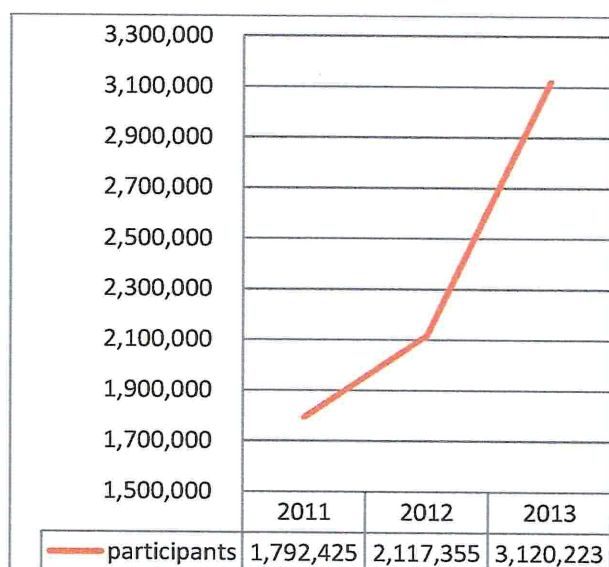
<sup>5</sup> Non-EU countries taking part in the programme submitted 200 projects over the period 2007-2013, of which 28 were granted EU funding.

## 1.2. Participants and Partners

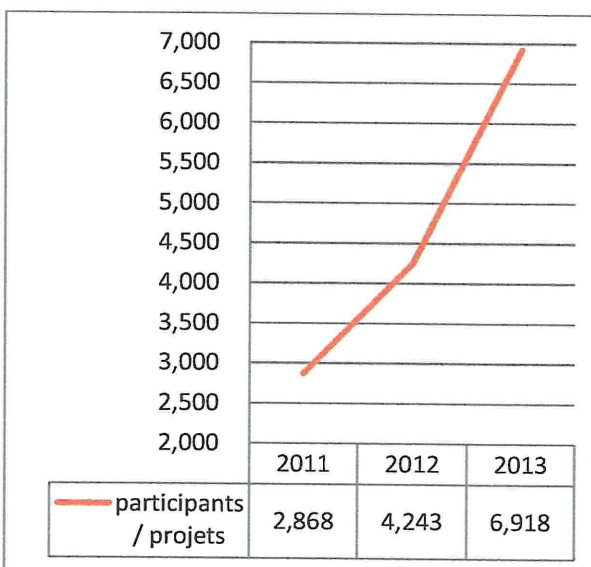
### 1.2.1. Participants

Over the years, the projects submitted involved a growing number of participants<sup>6</sup>. An analysis of the last three years of the programme gives the following results: the project operators estimated a total of 1 792 425 participants in projects presented in 2011 and 3 120 225 in 2013, in other words an increase of almost 75%, the average number of participants per project rising from 2 868 in 2011 to 6 918 in 2013.

**6. Total number of participants 2011-2013  
in projects presented**



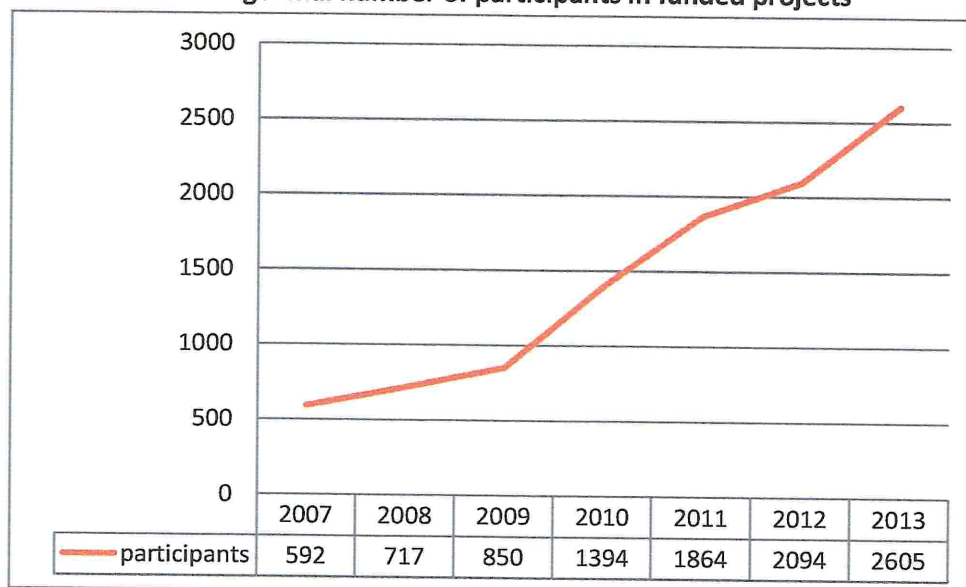
**7. Total number of participants/  
Total number of projects 2011-2013**



This increase can also be seen in terms of the number of projects funded, albeit to a lesser extent.

<sup>6</sup> "Participant" means any person directly involved in a project or benefiting directly from it, e.g. a visitor to an exhibition.

#### 8. Average final number of participants in funded projects



Overall, the total number of participants increased from 700 000 in 2007 to **1 175 000** in 2013.

#### 1.2.2. Partners

The total number of partners for each project also increased considerably. For example, between 2007 and 2013, the number of partners in civil society projects doubled, and the number of partners in networks of twinned towns rose by a factor of 2.5.

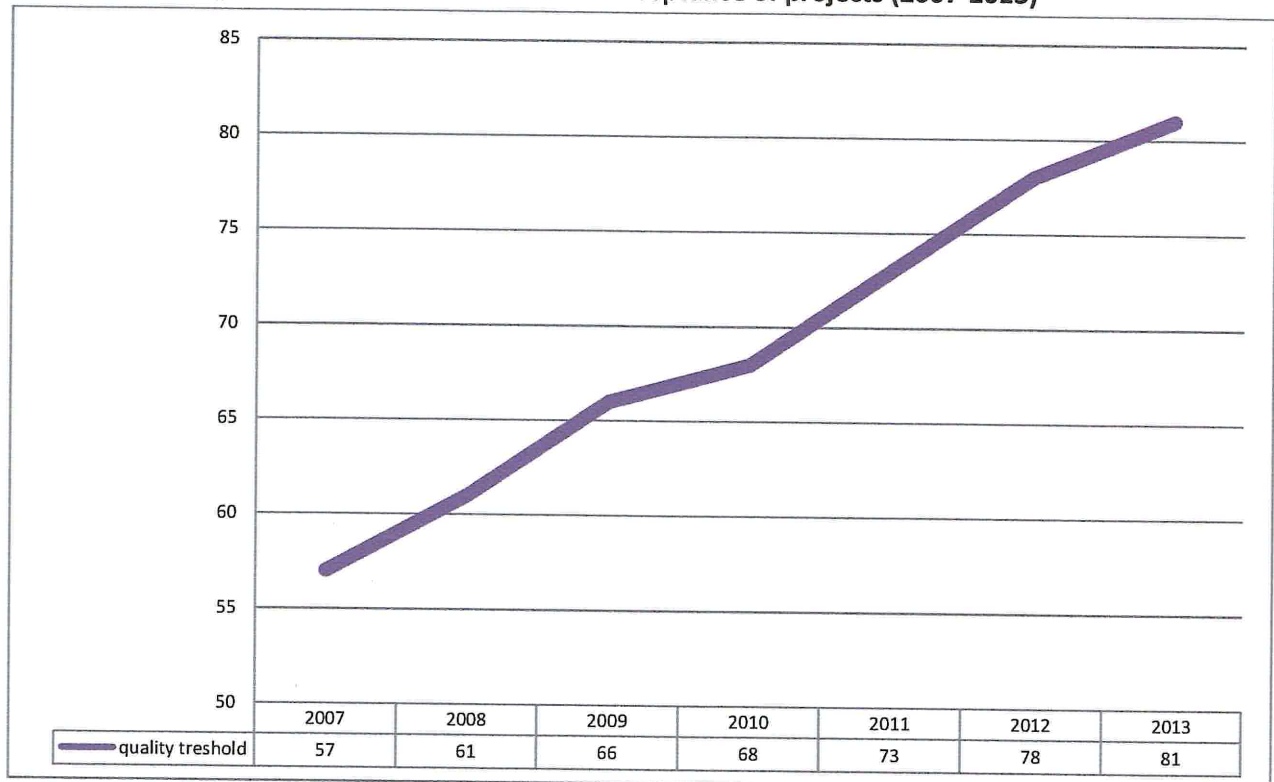
#### 1.3. Quality of the projects

The quality of the dossiers submitted improved during the programme, in particular as a result of operators gearing their projects to the requirements of the strategy.

The threshold for the financing of projects was thus increased from 57/100 in 2007 to **81/100** in 2013.



### 9. Trend in the threshold for the acceptance of projects (2007-2013)

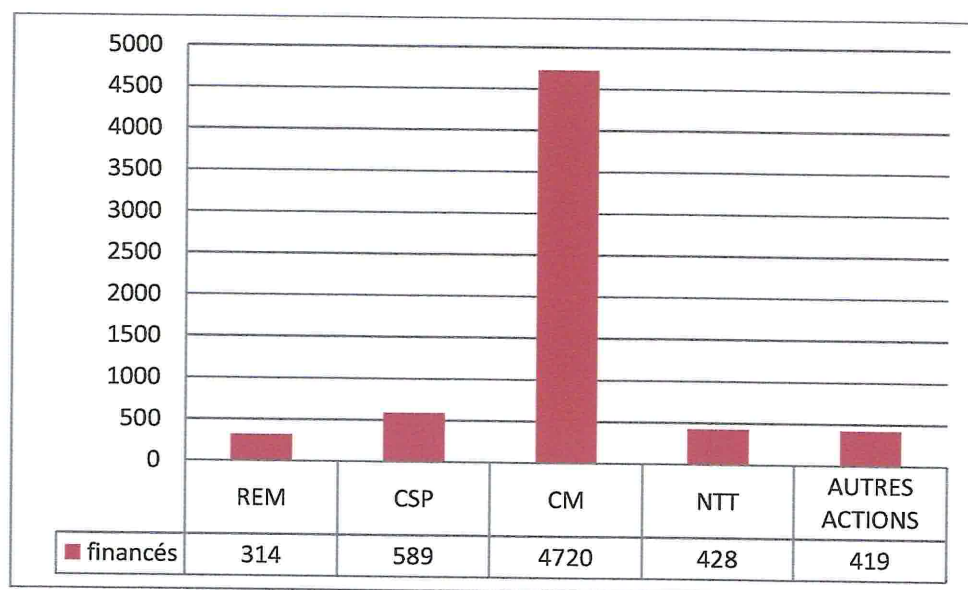


#### **Example from the 'Remembrance' action:**

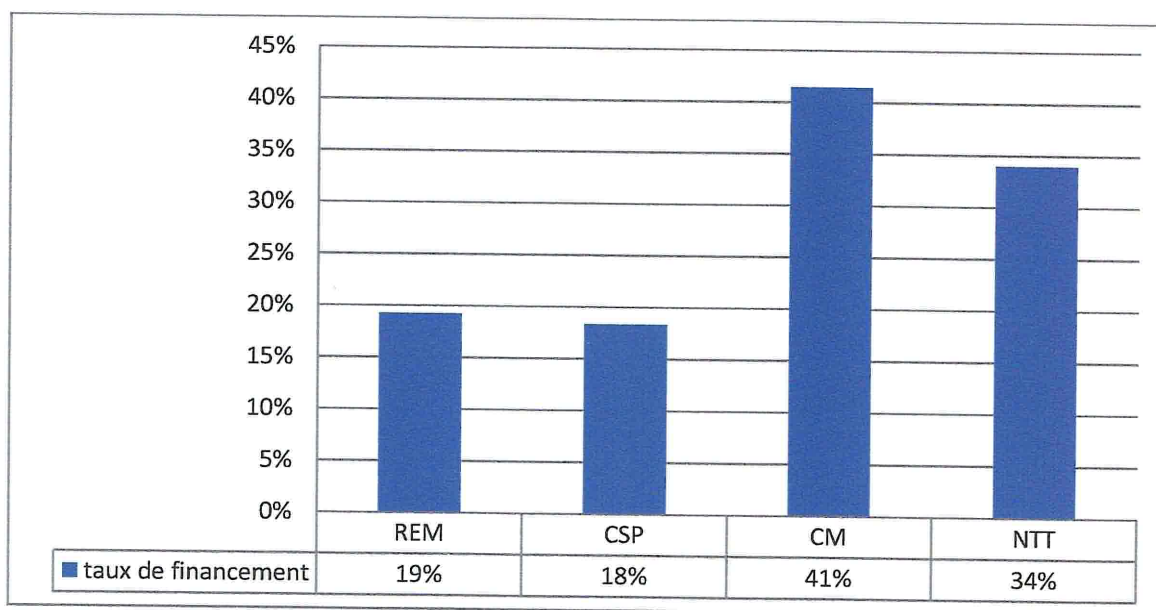
In this context, certain projects developed innovative methods, such as transmitting history using music ("Les voix étouffées du III Reich" – Voices stifled by the Third Reich) or activities for children ("The Crocus Project"), which were particularly popular and attracted large audiences.

In total, using this threshold as a basis, around **6500** projects benefited from EU funding, representing overall a financing rate (compared to applications) in the order of **33%**.

### 10. Total number of projects financed (2007-2013)



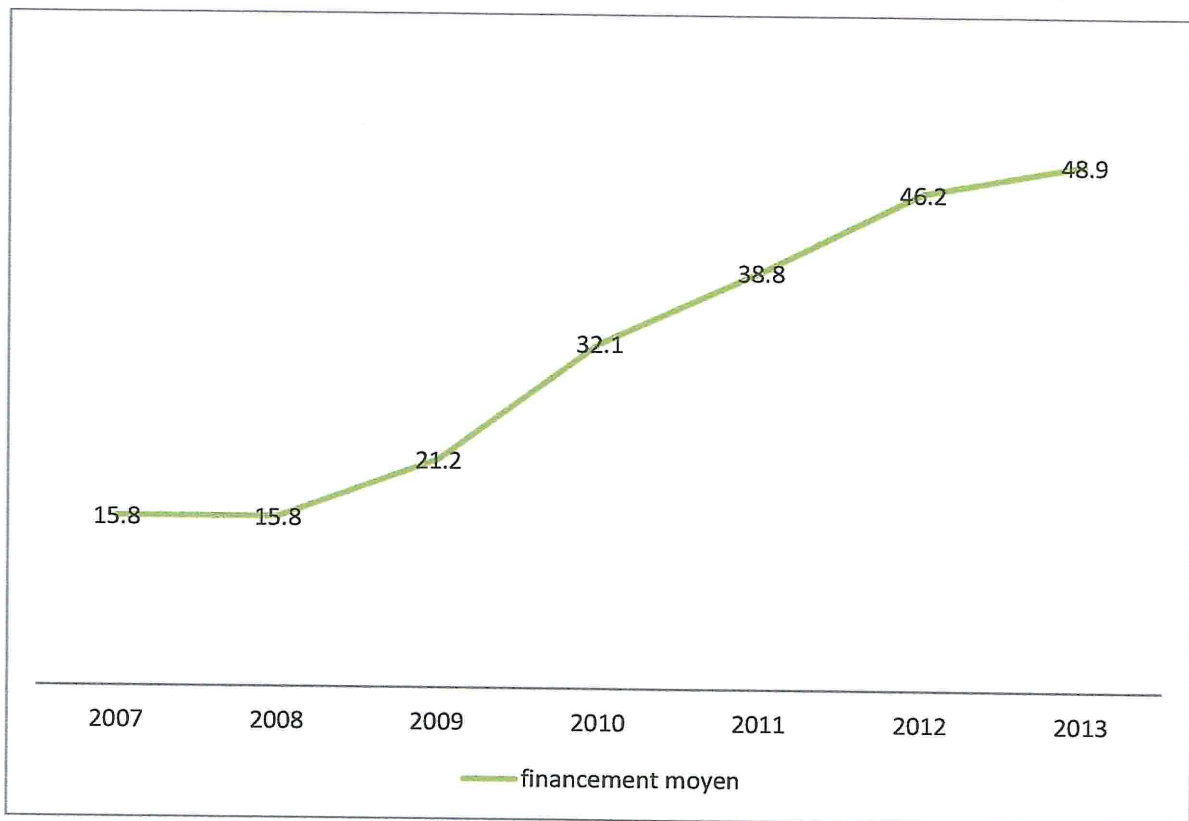
### 11. Rate of funding (projects financed as a percentage of projects submitted), by action (2007-2013)



#### 1.4. Funding of projects

The average grant tripled from 2007 to 2013, from 15 800 to 48 900 euros. Over the years, as they became more experienced, operators submitted more ambitious and complex projects centred on topical issues and involving more participants. The diagram below shows how funding developed over the period (all actions combined).

**12. Average funding per project between 2007 and 2013 (x 1000 euros)**



Not including twinning (for which the subsidy was capped at 25 000 euros), the average funding amount rose from around 20 000 euros in 2007 to 110 000 euros in 2013.

## 2. QUALITATIVE REMARKS

### 2.1. Balanced coverage in geographical terms

In 2007, for the four main actions, more than 70 % of applications came from five Member States (Germany, France, Italy, Hungary, Poland), with more than half coming from Germany or France. Today, each Member State - with two exceptions - introduces a number of applications corresponding more or less to its **respective weight in the EU in terms of population**.

This is the result of several measures:

- firstly, stepped up, targeted information for the 'new' Member States and less involved countries, in particular by way of the **"Europe for Citizens" contact points**;
- then, the package of **procedural simplification** which provided **more immediate access** to the programme, in particular abandoning the need for a strict and formal twinning agreement (which made a whole series of new towns eligible), the establishment of flat rates to allow very fast *ex-ante* and *ex-post* identification by operators of the grant awarded, and the establishment of multi annual partnerships;
- finally - as a result of the measure outlined above - **fast payment** of the advance funding (less than 10 days), giving operators the funds necessary to launch their projects.

### 2.2. Impact of the programme: a more strategic approach

The analyses conducted in 2008 and 2009 demonstrated that the activities developed during that period were sometimes little more than just meetings between people from different countries, without any real leitmotif or direct link with the programme objectives<sup>7</sup>.

Strategic action enabled this situation to be mitigated to a certain extent by turning town twinning projects into more ambitious projects involving a larger number of towns and cities, focusing on common problems such as the **integration of migrants and travellers or how to process urban waste**, etc. These were more structured and larger scale projects with a much greater impact on citizens. The number of applications for the action 'Networks of Twinned Towns' thus increased by a factor of 2.5 between 2007 and 2013, from 89 to 319.

In the same way, the requirements in terms of content were also tightened up for civil society projects, taking into account the EU's social and societal objectives. Consequently, increasing numbers of large-scale organisations introduced often innovative projects with a real European dimension.

---

<sup>7</sup> All manner of topics were addressed: culture, youth, education, film, sport, journalism, tourism, scouting, etc. Almost 75 % of the projects submitted, according to figures from 2009, had only a tenuous link with promoting European citizenship. This situation was difficult to remedy. 42 % of the projects funded had only an indirect link to citizenship.

With regard to Remembrance projects - which, previously, were mainly local operations - the recommendations were intended to widen the geographical coverage of the activities and establish transnational partnerships.

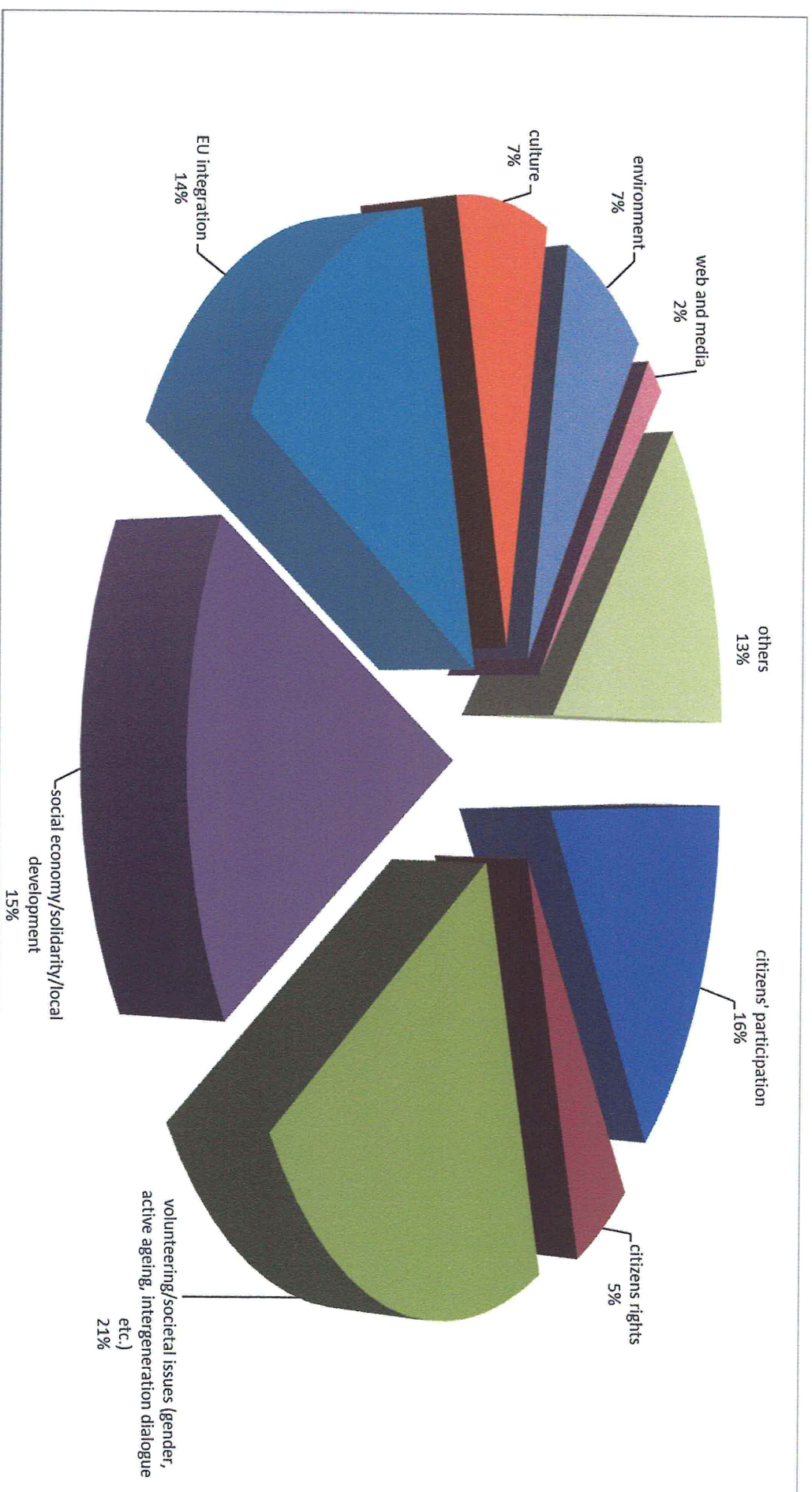
Finally, at the outset the participants in two thirds of the projects were also the organisers and could therefore already be considered as mobilised citizens. Another important goal was therefore to reach out beyond these multipliers, whose role remains crucial, to reach new groups of people who are less aware of European issues.

Over the final three years of the programme, the fact that the projects were of higher quality and larger in scale, with closer links to the main themes associated with citizenship (see diagram 13), and that new people were involved considerably augmented its impact.

**Ultimately, the programme reached almost 25 000 towns and cities in Europe and created 350 networks of towns and cities around common issues. 4 250 civil society organisations were mobilised to meet citizens' concerns and to pass them on to various government levels. More than 500 organisations were involved in Remembrance activities vis-à-vis citizens.**



### 13. NTT, CM and CSP actions 2013



### **2.3. Development of European civil society through the programme**

The fact of having to gear eligible projects to certain themes connected to citizens' priorities and concerns led the organisations in question to reconsider some of their strategies and work programmes and to take European citizenship and its implications more directly into account in the design of projects.

The expressed wish to involve as many new citizens as possible encouraged the organisations in question to develop methodologies to address this issue.

The programme therefore prompted a number of changes within civil society organisations themselves by encouraging them to evolve in line with changes in society.

### 3. RATIONAL AND INNOVATIVE MANAGEMENT

The changes made to the implementation of the programme led to the results mentioned in chapter 2 in terms of geographical coverage and impact on citizens and operators in the field of citizenship being achieved. In addition to the wish to be closer to citizens, in particular via the Europe for Citizens contact points, the programme created a dense network of projects and mobilised citizens throughout Europe on a scale rarely seen before.

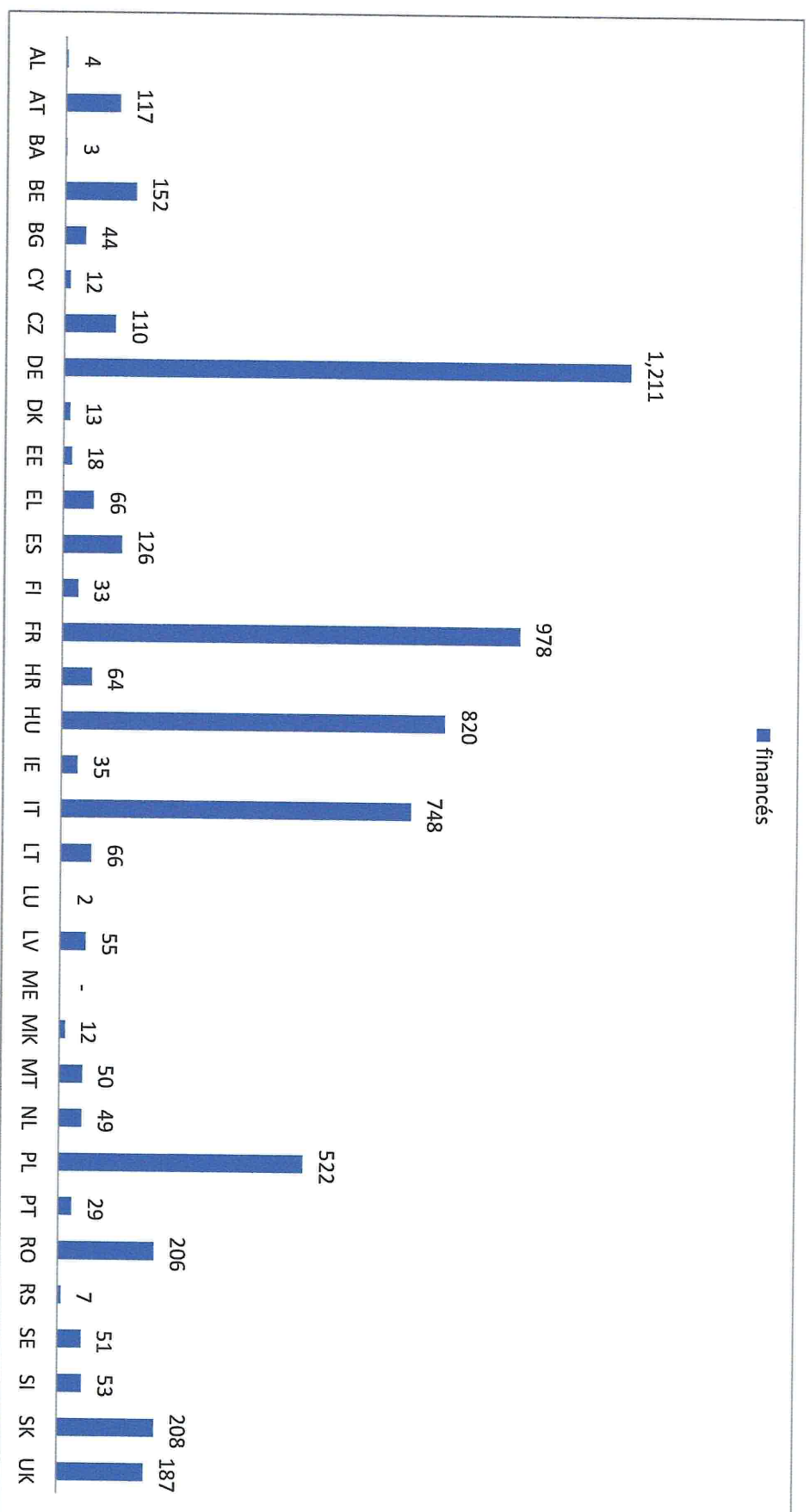
The rationalisation exercise undertaken included, in particular:

- calls for proposals better focused on more precise priorities, with fewer submission dates but broader coverage over time;
- non-discriminatory eligibility criteria by means of electronic applications;
- a single overall innovative system (all Member States combined), which was simple to apply and helped to rectify the chronic under-subscription which used to characterise the programme;
- paperless management of the entire procedure, from the initial application to the final report;
- a modern and effective system for the monitoring of expenditure, also paperless;
- simplification of internal procedures, leading to greater management flexibility;
- drastic shortening of contract conclusion and payment terms (6 days for advance funding, 30 days for final reports);
- an effective monitoring strategy, with the use of multi-project visits.

Beyond these technical aspects, the measures led to a refocusing and, to a certain extent, remodelling of the applications submitted by operators in the sense that these applications became more targeted, ambitious and demanding.

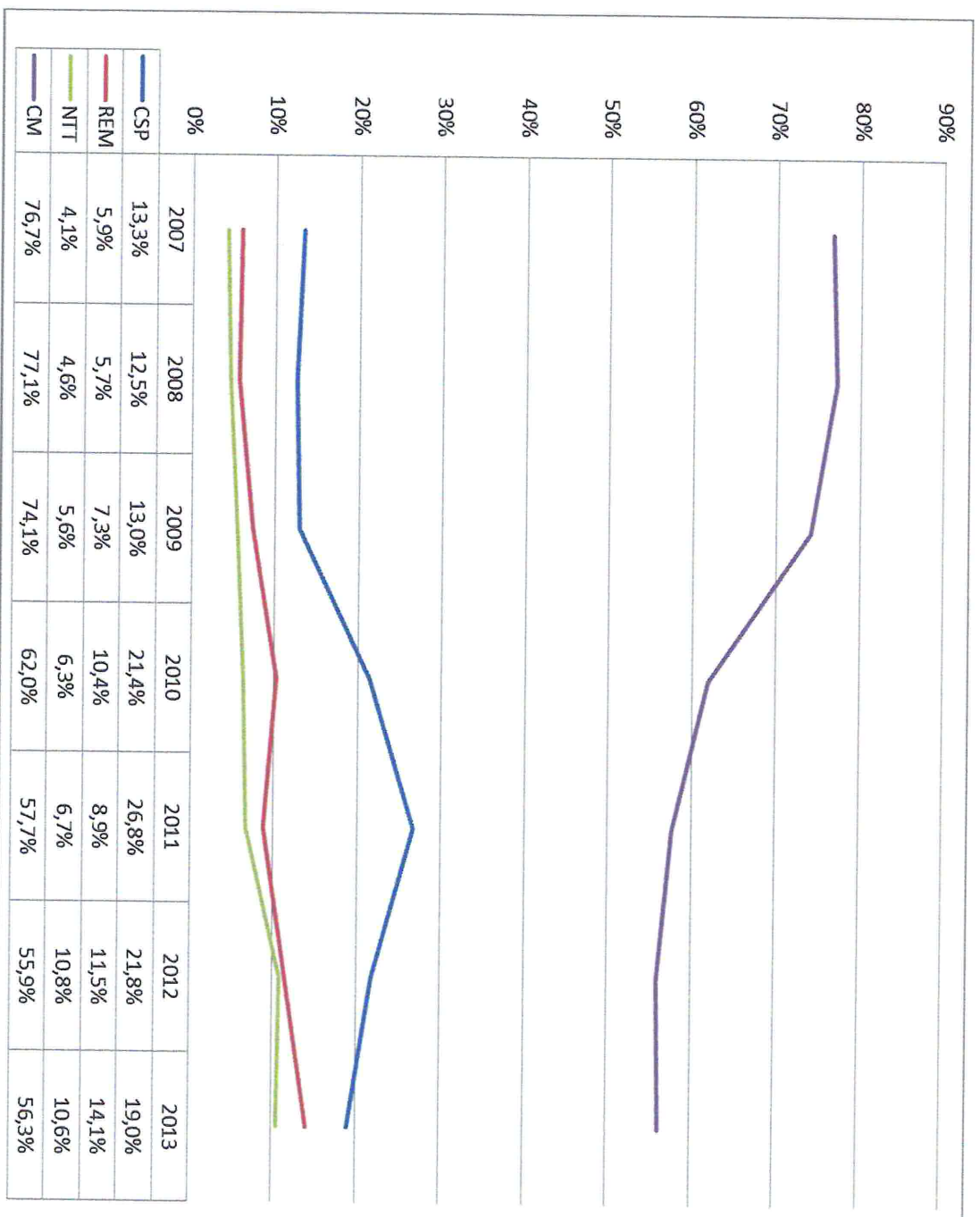
# **ANNEXES**

## Total number of CM, NTT, REM and CSP projects financed 2007-2013 (by country)





## Share of the proportion represented by each action (2007/2013)



### FINANCIAL PARAMETERS – COMPARATIVE TABLE 2007-2013

	2007	2013
Commitments in millions of €	18,5	26,6
Payments in millions of €	20,2	25,9
Implementation rate commitments %	100%*	100%
Implementation rate payments %	76 %	100%
No of payments	656	1205
Time taken for advance payment (in days)	42	11,8
Time taken for final payment (in days)	88	25,6
Time take for the payment of administrative appropriations (in days)	23,6	10,2
Time taken for selection (months)	4,5	2,4
Time taken for conclusion of the contract (months)	2,9	1

\* taking into account overall commitment for one round of twinning

## CM + NTT + REM + CSP

projects awarded a grant												
2007%	2007	2008	2009	2010	2011	2012	2013	2013%	TOT	TOT %		
0.00%	0	0	0	0	0	0	4	0.89%	4	0.04%		
2.39%	27	33	19	11	11	8	8	1.77%	117	1.94%		
0.04%	0	0	0	0	0	0	1	0.44%	3	0.05%		
2.39%	27	45	24	21	19	10	6	1.33%	152	2.51%		
0.71%	8	7	7	11	2	4	5	1.11%	44	0.73%		
0.09%	1	3	3	2	2	0	1	0.22%	12	0.20%		
1.59%	18	29	34	8	8	6	7	1.53%	110	1.82%		
21.95%	248	306	212	152	134	88	71	15.74%	1,211	20.01%		
0.27%	3	1	4	1	1	2	1	0.22%	13	0.21%		
0.71%	8	4	1	1	2	1	1	0.22%	18	0.30%		
1.06%	12	10	14	12	6	6	6	1.33%	66	1.09%		
1.85%	21	31	28	17	8	13	8	1.77%	126	2.08%		
0.53%	6	6	7	4	1	4	5	1.11%	33	0.55%		
23.11%	284	228	213	98	69	53	33	7.32%	978	16.16%		
0.27%	3	5	11	12	10	14	9	2.80%	64	1.06%		
10.27%	116	174	159	114	107	75	75	16.61%	820	13.55%		
0.35%	4	6	6	10	3	4	2	0.44%	35	0.58%		
10.97%	124	189	158	104	83	44	46	10.20%	748	12.36%		
0.85%	10	14	9	14	9	5	5	1.11%	66	1.09%		
0.00%	0	1	1	0	0	0	0	0.00%	2	0.03%		
0.53%	6	7	8	7	9	12	6	1.33%	55	0.91%		
0.60%	0	0	0	0	0	0	0	0.00%	-	0.00%		
0.03%	0	0	1	4	4	2	1	0.22%	12	0.20%		
0.44%	5	4	14	10	11	2	4	0.89%	50	0.83%		
0.62%	7	19	8	5	4	3	3	0.67%	49	0.81%		
8.18%	97	140	112	68	32	38	35	7.76%	522	8.63%		
0.80%	9	8	6	3	2	0	1	0.22%	29	0.48%		
1.86%	21	18	41	34	28	31	33	7.33%	206	3.40%		
0.00%	0	0	0	0	0	0	7	1.55%	7	0.12%		
0.62%	7	12	12	6	4	7	3	0.67%	51	0.84%		
0.27%	3	3	6	13	5	13	10	2.22%	53	0.88%		
0.53%	6	25	24	29	35	45	44	9.76%	208	3.44%		
4.24%	49	46	41	18	16	8	9	2.00%	187	3.09%		
100%	1,130	1,374	1,183	789	625	499	451	100%	6,051	100%		

participants									
2011	2012	2013	TOT						
1,792,425	2,117,355	3,120,223	7,030,003						

participants / projects awarded a grant									
2011	2012	2013	TOT						
2,868	4,243	6,918	4,463						

projects received												
Country	Area	2007%	2007	2008	2009	2010	2011	2012	2013	2013%	TOT	TOT %
AL	Bk	0.00%	0	0	0	1	0	2	18	0.63%	21	0.12%
AT	C	2.79%	60	62	56	28	51	39	33	1.09%	329	1.88%
BA	Bk	0.00%	0	0	0	0	3	26	0.86%	29	0.17%	
BE	C	2.61%	56	72	59	52	61	45	50	1.66%	395	2.26%
BG	Bk	0.74%	16	14	11	37	30	37	55	1.83%	200	1.14%
CY	S	0.28%	6	7	9	5	4	3	5	0.17%	39	0.22%
CZ	E	1.86%	40	49	68	39	41	62	63	2.09%	362	2.07%
DE	C	21.13%	454	466	500	347	356	339	329	10.91%	2791	15.97%
DK	N	0.37%	8	4	6	5	5	5	3	0.10%	36	0.21%
EE	N	0.37%	8	6	8	5	5	7	29	0.96%	68	0.39%
EL	S	1.49%	32	29	44	27	34	37	49	1.63%	252	1.44%
ES	S	2.98%	64	79	91	58	55	67	60	1.99%	474	2.71%
FI	N	0.70%	15	14	18	15	13	15	11	0.36%	101	0.58%
FR	C	23.41%	503	422	537	294	209	264	218	7.23%	2,537	14.52%
HR	S	0.47%	10	20	32	31	73	73	71	2.35%	310	1.77%
HU	E	8.89%	191	246	329	269	430	483	486	16.12%	2,434	13.93%
IE	N	0.56%	12	13	18	16	9	17	7	0.23%	92	0.53%
IT	S	11.75%	252	306	341	306	284	357	419	13.90%	2,265	12.96%
LT	N	1.07%	23	28	55	66	51	50	48	1.59%	321	1.84%
LU	C	0.23%	5	2	1	0	2	1	0	0.09%	11	0.06%
LV	N	0.51%	11	14	20	19	47	51	51	1.69%	213	1.22%
ME	Bk	0.00%	0	0	0	0	0	0	2	0.07%	2	0.01%
MK	Bk	0.00%	0	0	2	7	35	17	19	0.63%	80	0.46%
MT	S	0.37%	8	7	20	46	26	8	7	0.23%	123	0.70%
NL	C	1.07%	23	27	22	13	22	18	30	1.09%	155	0.89%
PL	E	7.17%	154	186	209	144	191	161	174	5.77%	1,219	6.97%
PT	S	0.79%	17	19	12	13	13	16	16	0.53%	106	0.61%
RO	Bk	1.91%	41	30	58	86	104	140	195	6.47%	654	3.74%
SE	Bk	0.03%	0	0	0	0	0	0	70	2.32%	70	0.40%
SI	N	0.74%	16	19	19	16	12	15	15	0.50%	112	0.64%
SK	E	0.42%	9	5	19	41	54	75	97	3.22%	300	1.72%
UK	E	0.65%	14	35	45	61	108	249	318	10.55%	830	4.75%
TOTAL	N	4.70%	101	99	134	48	69	56	41	1.36%	548	3.14%
		100%	2,149	2,280	2,743	2,095	2,484	2,712	3,015	100%	17,478	100%

TOT DE, FR, IT, HU, PL	11,246
% TOT DE, FR, IT, HU, PL	64.34%
% TOT OTHERS	35.66%

TOT DE, FR, IT, HU, PL	1,626
% TOT DE, FR, IT, HU, PL	72.31%
% TOT OTHERS	27.69%

TOT DE, FR, IT, HU, PL	1,626
% TOT DE, FR, IT, HU, PL	72.31%
% TOT OTHERS	27.69%

TOT DE, FR, IT, HU, PL	1,626
% TOT DE, FR, IT, HU, PL	72.31%
% TOT OTHERS	27.69%

TOT DE, FR, IT, HU, PL	1,626
% TOT DE, FR, IT, HU, PL	72.31%
% TOT OTHERS	27.69%

TOT DE, FR, IT, HU, PL	1,626
% TOT DE, FR, IT, HU, PL	72.31%
% TOT OTHERS	27.69%

TOT DE, FR, IT, HU, PL	1,626
% TOT DE, FR, IT, HU, PL	72.31%
% TOT OTHERS	27.69%

TOT DE, FR, IT, HU, PL	1,626
% TOT DE, FR, IT, HU, PL	72.31%
% TOT OTHERS	27.69%

TOT DE, FR, IT, HU, PL	1,626
% TOT DE, FR, IT, HU, PL	72.31%
% TOT OTHERS	27.69%

TOT DE, FR, IT, HU, PL	1,626
% TOT DE, FR, IT, HU, PL	72.31%
% TOT OTHERS	27.69%

TOT DE, FR, IT, HU, PL	1,626
% TOT DE, FR, IT, HU, PL	72.31%
% TOT OTHERS	27.69%

TOT DE, FR, IT, HU, PL	1,626
% TOT DE, FR, IT, HU, PL	72.31%
% TOT OTHERS	27.69%

TOT DE, FR, IT, HU, PL	1,626
% TOT DE, FR, IT, HU, PL	72.31%
% TOT OTHERS	27.69%

TOT DE, FR, IT, HU, PL	1,626
% TOT DE, FR, IT, HU, PL	72.31%
% TOT OTHERS	27.69%

TOT DE, FR, IT, HU, PL	1,626
% TOT DE, FR, IT, HU, PL	72.31%
% TOT OTHERS	27.69%

TOT DE, FR, IT, HU, PL	1,626
% TOT DE, FR, IT, HU, PL	72.31%
% TOT OTHERS	27.69%

TOT DE, FR, IT, HU, PL	1,626
% TOT DE, FR, IT, HU, PL	72.31%
% TOT OTHERS	27.69%

TOT DE, FR, IT, HU, PL	1,626
% TOT DE, FR, IT, HU, PL	72.31%
% TOT OTHERS	27.69%

TOT DE, FR, IT, HU, PL	1,626
% TOT DE, FR, IT, HU, PL	72.31%
% TOT OTHERS	27.69%

TOT DE, FR, IT, HU, PL	1,626
% TOT DE, FR, IT, HU, PL	72.31%
% TOT OTHERS	27.69%

TOT DE, FR, IT, HU, PL	1,626
% TOT DE, FR, IT, HU, PL	72.31%
% TOT OTHERS	27.69%

TOT DE, FR, IT, HU, PL	1,626
% TOT DE, FR, IT, HU, PL	72.31%
% TOT OTHERS	27.69%

TOT DE, FR, IT, HU, PL	1,626
% TOT DE, FR, IT, HU, PL	72.31%
% TOT OTHERS	27.69%

TOT DE, FR, IT, HU, PL	1,626
% TOT DE, FR, IT, HU, PL	72.31%
% TOT OTHERS	27.69%

TOT DE, FR, IT, HU, PL	1,626
% TOT DE, FR, IT, HU, PL	72.31%
% TOT OTHERS	27.69%

TOT DE, FR, IT, HU, PL	1,626
% TOT DE, FR, IT, HU, PL	72.31%
% TOT OTHERS	27.69%

TOT DE, FR, IT, HU, PL	1,626
% TOT DE, FR, IT, HU, PL	72.31%
% TOT OTHERS	27.69%

TOT DE, FR, IT, HU, PL	1,626
% TOT DE, FR, IT, HU, PL	72.31%
% TOT OTHERS	27.69%

TOT DE, FR, IT, HU, PL	1,626
% TOT DE, FR, IT, HU, PL	72.31%
% TOT OTHERS	27.69%

TOT DE, FR, IT, HU, PL	1,626
% TOT DE, FR, IT, HU, PL	72.31%
% TOT OTHERS	27.69%

TOT DE, FR, IT, HU, PL	1,626
% TOT DE, FR, IT, HU, PL	72.31%
% TOT OTHERS	27.69%

TOT DE, FR, IT, HU, PL	1,626
% TOT DE, FR, IT, HU, PL	72.31%
% TOT OTHERS	27.69%

TOT DE, FR, IT, HU, PL	1,626
% TOT DE, FR, IT, HU, PL	72.31%
% TOT OTHERS	27.69%

TOT DE, FR, IT, HU, PL	1,626
% TOT DE, FR, IT, HU, PL	72.31%
% TOT OTHERS	27.69%

TOT DE, FR, IT, HU, PL	1,626
% TOT DE, FR, IT, HU, PL	72.31%
% TOT OTHERS	27.69%

TOT DE, FR, IT, HU, PL	1,626
% TOT DE, FR, IT, HU, PL	72.31%
% TOT OTHERS	27.69%

TOT DE, FR, IT, HU, PL	1,626
% TOT DE, FR, IT, HU, PL	72.31%
% TOT OTHERS	27.69%

TOT DE, FR, IT, HU, PL	1,626
% TOT DE, FR, IT, HU, PL	72.31%
% TOT OTHERS	27.69%

TOT DE, FR, IT, HU, PL	1,626
% TOT DE, FR, IT, HU, PL	72.31%
% TOT OTHERS	27.69%

TOT DE, FR, IT, HU, PL	1,626
% TOT DE, FR, IT, HU, PL	72.31%
% TOT OTHERS	27.69%

TOT DE, FR, IT, HU, PL	1,626
% TOT DE, FR, IT, HU, PL	72.31%
% TOT OTHERS	27.69%

TOT DE, FR, IT, HU, PL	1,626
% TOT DE, FR, IT, HU, PL	72.31%
% TOT OTHERS	27.69%

TOT DE, FR, IT, HU, PL	1,626
% TOT DE, FR, IT, HU, PL	72.31%
% TOT OTHERS	27.69%

TOT DE, FR, IT, HU, PL	1,626
% TOT DE, FR, IT, HU, PL	

1	Northern Europe	N	9,03%	194	197	278	190	211	216	205	6,80%	1491	8,53%
2	Southern Europe	S	18,10%	389	467	549	486	489	561	627	20,80%	3568	20,41%
3	Central Europe	C	51,21%	1101	1051	1175	734	791	706	660	21,89%	6218	35,58%
4	Eastern Europe	E	18,99%	408	521	670	554	824	1030	1138	37,74%	5145	29,44%
5	Balkans	Bk	2,65%	57	44	71	131	169	199	385	12,77%	1056	6,04%
			100%	2.149	2.280	2.743	2.095	2.484	2.712	3.015	100%	17478	100%



# CM – Town twinning citizens' meetings

projects received																		participants				projects awarded a grant										participants / projects awarded a grant								
Country	Area	2007%	2007	2008	2009	2010	2011	2012	2013	2013%	TOT	TOT %	2007%	2007	2008	2009	2010	2011	2012	2013	2013%	TOT	TOT %	2007%	2007	2008	2009	2010	2011	2012	2013	2013%	TOT	TOT %	2011	2012	2013	TOT		
AL	BK	0.00%	0	0	0	0	0	1	4	0.24%	5	0.04%	0.00%	0	0	0	0	0	0	0	0	0.28%	1	0.02%	1.44%	13	12	6	4	6	4	4	1.13%	49	1.04%					
AT	C	1.70%	28	20	25	8	15	16	8	0.47%	120	1.05%	0.00%	0	0	0	0	0	0	1	1	0.28%	2	0.04%	0.00%	0	0	0	0	0	0	1	1	0.28%	2	0.04%				
BA	BK	0.00%	0	0	0	0	0	0	1	7	0.41%	8	0.07%	27	44	35	27	34	15	21	1.24%	203	1.78%	1.44%	13	28	11	10	15	6	3	0.85%	86	1.82%						
BE	C	1.64%	27	44	35	27	34	15	21	1.24%	203	1.78%	0.44%	4	4	4	4	3	2	4	0.53%	30	0.26%	0.44%	4	3	2	3	1	2	3	0.85%	18	0.38%						
BG	BK	0.24%	4	4	4	4	4	4	9	0.53%	30	0.26%	0.00%	0	2	2	2	2	2	2	0	0.00%	8	0.17%	0.00%	0	2	2	2	2	0	0	0.00%	8	0.17%					
CY	S	0.18%	3	3	4	2	3	2	3	0.18%	20	0.18%	1.22%	11	20	16	4	3	2	4	1.13%	60	1.27%	24.12%	218	263	182	113	118	72	63	17.85%	1,029	21.80%						
CZ	E	23.42%	386	393	416	257	260	245	246	14.50%	2,203	19.35%	0.11%	1	0	1	1	1	1	1	0	0.00%	5	0.11%	0.11%	1	0	1	1	1	1	0	0.00%	5	0.11%					
DK	N	0.24%	4	1	3	1	2	2	2	0.06%	13	0.11%	0.55%	5	3	1	0	1	1	1	1	0.28%	12	0.25%	0.55%	5	3	1	0	1	1	1	0.28%	12	0.25%					
EE	N	0.30%	5	5	5	3	1	2	3	12	0.71%	31	0.27%	13	15	19	10	8	9	5	0.29%	79	0.69%	2.32%	21	31	23	11	7	8	5	1.42%	106	2.35%						
EL	S	0.79%	13	15	19	10	8	9	5	0.29%	79	0.69%	0.22%	2	3	4	3	0	2	1	0.28%	15	0.32%	0.22%	2	3	4	3	0	2	1	0.28%	15	0.32%						
ES	S	3.40%	56	67	73	41	31	28	29	1.71%	325	2.85%	28.65%	259	202	190	82	58	45	29	8.22%	865	18.33%	0.00%	0	1	3	2	5	13	6	1.70%	30	0.64%						
FI	N	0.36%	6	7	8	10	2	8	3	0.18%	44	0.39%	0.00%	0	1	1	1	0	0	0	0.00%	2	0.04%	0.00%	0	1	1	0	0	0	0	0.00%	2	0.04%						
FR	C	27.73%	457	377	480	244	243	205	170	10.02%	2,176	19.11%	0.44%	4	6	3	8	3	3	1	0.28%	28	0.59%	0.44%	4	6	3	8	3	3	1	0.28%	28	0.59%						
HR	S	0.00%	0	7	5	4	14	28	32	1.89%	90	0.79%	9.73%	88	136	124	79	90	64	69	19.55%	650	13.77%	0.33%	3	7	5	5	1	3	2	0.57%	26	0.55%						
HU	E	8.15%	135	179	237	161	236	286	346	23.39%	1,580	13.88%	0.00%	0	0	0	0	0	0	0	0.00%	0	0.00%	0.00%	0	0	0	0	0	0	0	0.00%	0	0.00%						
IE	N	0.73%	12	13	11	11	8	10	3	0.18%	68	0.60%	0.00%	0	0	0	0	0	0	0	0.00%	0	0.00%	0.00%	0	0	0	0	0	0	0	0.00%	0	0.00%						
IT	S	10.19%	168	233	244	185	157	136	145	8.34%	1,268	11.14%	0.00%	0	0	0	0	0	0	0	0.00%	0	0.00%	0.55%	5	4	12	8	10	1	3	0.85%	43	0.91%						
LT	N	0.36%	6	12	9	9	4	9	16	0.94%	65	0.57%	8.36%	81	122	90	60	28	33	29	8.22%	443	9.19%	0.73%	7	5	4	2	0	0	1	0.28%	19	0.40%						
LU	C	0.24%	4	2	1	0	1	1	0	0.00%	9	0.08%	0.00%	0	0	0	0	0	0	0	0.00%	0	0.00%	0.00%	0	0	0	0	0	0	0	0.00%	0	0.00%						
LV	N	0.36%	6	7	7	8	15	21	18	1.06%	82	0.72%	0.00%	0	0	0	0	0	0	0	0.00%	0	0.00%	0.00%	0	0	0	0	0	0	0	0.00%	0	0.00%						
ME	BK	0.60%	0	0	0	0	0	0	0	0.00%	0	0.00%	0.00%	0	0	0	0	0	0	0	0.00%	0	0.00%	0.00%	0	0	0	0	0	0	0	0.00%	0	0.00%						
MK	BK	0.00%	0	0	0	0	0	0	0	0.00%	0	0.00%	0.00%	0	0	0	0	0	0	0	0.00%	0	0.00%	0.00%	0	0	0	0	0	0	0	0.00%	0	0.00%						
MT	S	0.42%	7	6	18	16	14	4	4	0.24%	69	0.61%	0.00%	0	0	0	0	0	0	0	0.00%	0	0.00%	0.00%	0	0	0	0	0	0	0	0.00%	0	0.00%						
NL	C	0.91%	15	15	15	4	11	7	8	0.47%	75	0.66%	0.00%	0	0	0	0	0	0	0	0.00%	0	0.00%	0.00%	0	0	0	0	0	0	0	0.00%	0	0.00%						
PL	E	7.28%	120	151	154	109	151	100	99	5.83%	884	7.77%	8.96%	81	122	90	60	28	33	29	8.22%	443	9.19%	0.73%	7	5	4	2	0	0	1	0.28%	19	0.40%						
PT	S	0.79%	13	11	9	7	3	3	4	0.24%	50	0.44%	2.10%	19	14	35	30	22	30	31	8.78%	181	3.84%	0.00%	0	0	0	0	0	0	0	0	0.00%	0	0.00%					
RO	BK	2.06%	34	26	45	55	55	81	132	7.78%	428	3.76%	0.00%	0	0	0	0	0	0	0	0.00%	0	0.00%	0.00%	0	0	0	0	0	0	0	0.00%	0	0.00%						
RS	BK	0.00%	0	0	0	0	0	0	0	0.00%	0	0.00%	0.00%	0	0	0	0	0	0	0	0.00%	0	0.00%	0.00%	0	0	0	0	0	0	0	0.00%	0	0.00%						
SE	N	0.55%	9	8	13	9	4	7	4	0.24%	54	0.47%	0.44%	4	7	7	4	2	2	1	0.28%	27	0.57%	0.11%	1	2	4	4	4	8	7	1.98%	30	0.64%						
SI	E	0.24%	4	2	8	7	16	30	37	2.18%	104	0.91%	0.35%	5	23	23	24	31	42	38	10.76%	186	3.94%	4.20%	38	39	33	17	14	7	7	1.98%	155	3.38%						
SK	E	0.67%	11	30	39	48	70	186	258	15.34%	642	5.64%	100%	994	1,111	914	555	492	391	353	100%	4,720	100%	100%	994	1,111	914	555	492	391	353	100%	4,720	100%						
UK	N	5.34%	88	87	118	38	49	39	28	1.65%	447	3.93%	100%	994	1,111	914	555	492	391	353	100%	4,720	100%	100%	994	1,111	914	555	492	391	353	100%	4,720	100%						
TOTAL		100%	1,648	1,758	2,033	1,298	1,433	1,517	1,697	100%	11,384	100%	100%	994	1,111	914	555	492	391	353	100%	4,720	100%	100%	994	1,111	914	555	492	391	353	100%	4,720	100%						

TOT DE, FR, IT, HU, PL	1,266	1,333	1,531	956	1,047	972	1,006
% TOT DE, FR, IT, HU, PL	76.82%	75.82%	75.31%	73.65%	73.06%	64.07%	59.28%
% TOT OTHERS	23.18%	24.18%	24.69%	26.35%	26.94%	35.93%	40.72%

TOT DE, FR, IT, HU, PL	8,111
% TOT DE, FR, IT, HU, PL	71.25%
% TOT OTHERS	28.75%

735	874	703	402	350	244	225
81.31%	78.67%	76.91%	72.43%	71.14%	62.40%	63.74%
18.69%	21.33%	23.09%	27.57%	28.86%	37.60%	36.26%

3,533
74,855
25,155

6,64%	60	70	58	41	27	27	17	4.82%	300	6.36%
14.05%	127	202	168	98	83	54	50	14.16%	782	16.57%
56.19%	508	519	394	211	200	127	100	28.33%	2,059	43.63%
20.58%	186	303	257	171	156	149	147	41.64%	1,369	29.00%
2.54%	23	17	37	34	26	34	39	11.05%	210	4.45%
100%	904	1,111	914	555	492	391	353	100%	4,720	100%



# NTT – Networks of twinned towns

participants				
2011	2012	2013	TOT	
153,106	152,000	156,509	461,606	

participants / projects awarded a grant				
2011	2012	2013	TOT	
3,125	3,455	3,817	3,445	

projects awarded a grant										
2007%	2007	2008	2009	2010	2011	2012	2013	2013%	TOT	TOT %
0.00%	0		0	0	0	0	2	4.88%	2	0.47%
1.92%	1	2	3	1	1	3	1	2.44%	12	2.80%
0.00%						0	1	2.44%	1	0.23%
1.92%	1	0	1	0	0	0	1	2.44%	2	0.47%
0.00%	0	0	1	0	0	0	1	2.44%	3	0.70%
1.92%	1	2	3	0	1	0	0	0.00%	1	0.23%
13.46%	7	15	17	10	7	8	4	9.76%	68	15.89%
1.92%	1	0	1	0	0	1	0	0.00%	3	0.70%
1.92%	1	1	0	0	0	0	0	0.00%	2	0.47%
5.77%	3	0	2	3	1	2	3	7.32%	14	3.27%
0.00%	0	0	2	3	1	1	0	0.00%	7	1.64%
1.92%	1	0	2	0	0	1	2	4.88%	6	1.40%
11.54%	6	4	5	2	3	3	1	2.44%	24	5.61%
0.00%	0	0	2	3	2	1	2	4.88%	10	2.34%
3.85%	2	12	13	14	10	7	3	7.32%	61	14.25%
0.00%	0	0	0	0	0	0	0	0.00%	-	0.00%
28.85%	15	18	16	17	13	7	4	9.76%	90	21.03%
1.92%	1	1	0	1	1	0	0	0.00%	4	0.93%
0.00%	0	0	0	0	0	0	0	0.00%	-	0.00%
3.85%	2	0	3	3	1	1	1	2.44%	11	2.57%
0.00%	0	0	1	1	0	0	0	0.00%	-	0.00%
0.00%	0	0	2	1	0	1	1	2.44%	3	0.70%
0.00%	0	3	2	1	0	1	1	2.44%	5	1.17%
0.00%	0	3	2	1	0	1	0	0.00%	7	1.64%
1.92%	1	7	11	2	0	2	3	7.32%	26	6.07%
1.92%	1	2	0	0	0	0	0	0.00%	3	0.70%
0.00%	0	1	1	2	3	0	1	2.44%	8	1.87%
0.00%							2	4.88%	2	0.47%
3.85%	2	4	2	1	2	3	1	2.44%	15	3.50%
1.92%	1	0	2	1	1	2	1	2.44%	8	1.87%
1.92%	1	2	0	3	1	0	4	9.76%	11	2.57%
7.69%	4	2	4	0	1	0	1	2.44%	12	2.80%
100%	52	77	96	69	49	44	41	100%	428	100%

31	56	62	45	33	27	15
59.62%	72.73%	64.58%	65.22%	67.35%	61.36%	36.59%
40.38%	27.27%	35.42%	34.78%	32.65%	38.64%	63.41%

269	
62.85%	
37.15%	

projects received												
Country	Area	2007%	2007	2008	2009	2010	2011	2012	2013	2013%	TOT	TOT %
AL	Bk	0.00%	0			0	0	0	0	1.25%	4	0.32%
AT	C	1.12%	1	2	3	1	4	5	4	1.25%	20	1.59%
BA	Bk	0.00%						2	6	1.88%	8	0.64%
BE	C	1.12%	1	2	1	0	1	0	4	1.25%	9	0.71%
BG	Bk	2.25%	2	1	2	0	0	2	9	2.82%	16	1.27%
CY	S	0.00%	0	1	2	1	0	1	0	0.00%	5	0.40%
CZ	E	1.12%	1	2	5	0	4	6	8	2.51%	26	2.07%
DE	C	14.61%	13	21	27	15	15	20	22	6.90%	133	10.56%
DK	N	1.12%	1	0	1	0	0	1	0	0.00%	3	0.24%
EE	N	1.12%	1	1	1	0	0	0	2	0.63%	5	0.40%
EL	S	4.49%	4	1	3	6	6	13	20	6.27%	53	4.21%
ES	S	0.00%	0	0	2	3	3	9	1	0.31%	18	1.43%
FI	N	4.49%	4	1	4	1	1	3	2	0.63%	16	1.27%
FR	C	8.99%	8	6	9	8	6	10	9	2.82%	56	4.45%
HR	S	0.00%	0	0	3	6	5	13	7	2.19%	34	2.70%
HU	E	7.87%	7	16	21	23	41	52	38	11.91%	198	15.73%
IE	N	0.00%	0	0	0	0	0	2	0	0.00%	2	0.16%
IT	S	26.97%	24	21	23	29	28	56	66	20.69%	247	19.62%
LT	N	3.37%	3	2	0	4	4	6	5	1.57%	24	1.91%
LU	C	0.00%	0	0	0	0	0	0	0	0.00%	0	0.00%
LV	N	1.12%	1	0	4	5	10	7	7	2.19%	34	2.70%
ME	Bk	0.00%							0	0.00%	0	0.00%
MK	Bk	0.00%	0	0	1	1	1	3	4	1.25%	10	0.79%
MT	S	1.12%	1	0	2	1	0	1	2	0.63%	7	0.56%
NL	C	0.00%	0	4	3	2	0	1	0	0.00%	10	0.79%
PL	E	4.49%	4	8	20	9	7	22	22	6.90%	92	7.31%
PT	S	1.12%	1	4	0	1	1	1	2	0.63%	10	0.79%
RO	Bk	2.25%	2	0	5	4	5	13	15	4.70%	44	3.49%
RS	Bk	0.00%							18	5.64%	18	1.43%
SE	N	3.37%	3	6	3	3	3	5	3	0.94%	26	2.07%
SI	E	1.12%	1	0	3	5	7	8	8	2.51%	32	2.54%
SK	E	1.12%	1	2	0	3	10	30	28	8.78%	74	5.88%
UK	N	5.62%	5	5	5	1	4	2	3	0.94%	25	1.99%
TOTAL		100%	89	106	153	132	166	204	319	100%	1259	100%

56	72	100	84	97	160	157
62.92%	67.92%	65.36%	63.64%	58.43%	54.42%	49.22%
37.08%	32.08%	34.64%	36.36%	41.57%	45.58%	50.78%

TOT DE, FR, IT, HU, PL	
% TOT DE, FR, IT, HU, PL	
% TOT OTHERS	

726	
57.66%	
42.34%	

12	8	12	5	5	6	5	12.20%	53	12.38%
19	20	25	27	17	12	10	24.39%	130	30.37%
14	25	27	14	11	15	7	17.07%	113	26.40%
6	23	29	20	13	11	11	26.83%	113	26.40%
1	1	3	3	3	0	8	19.51%	19	4.44%
100%	52	77	96	69	49	44	100%	428	100%

1	Northern Europe	N	20.22%	18	15	18	14	22	26	22	6.90%	135	10.72%
2	Southern Europe	S	33.71%	30	27	35	47	43	94	98	30.72%	374	29.71%
3	Central Europe	C	25.84%	23	35	43	26	26	36	39	12.23%	228	18.11%
4	Eastern Europe	E	15.73%	14	28	49	40	69	118	104	32.60%	422	33.52%
5	Balkans	BK	4.49%	4	1	8	5	6	20	56	17.55%	100	7.94%
			100%	89	106	153	132	166	204	319	100%	1259	100%



REM – Active European Remembrance

projects received													participants				projects awarded a grant											participants / projects awarded a grant				
Country	Area	2007%	2007	2008	2009	2010	2011	2012	2013	2013%	TOT	TOT %	2011	2012	2013	TOT	2007%	2007	2008	2009	2010	2011	2012	2013	2013%	TOT	TOT %	2011	2012	2013	TOT	
AL	Bk	0.00%	0	0	0	0	0	0	3	0.71%	3	0.18%	6	847	1290	2.143	0.00%	0	0	0	0	0	0	0	0.00%	-	0.00%	-	-	-	TOT	
AT	C	3.97%	5	14	10	7	13	6	8	1.85%	63	3.87%	3327	7338	11187	21.852	5.56%	2	8	2	1	3	1	2	6.45%	19	6.05%	1.109	7.338	5.594	3.642	
BA	Bk	0.00%	0	0	0	0	0	0	2	0.47%	2	0.12%	0	0	5515	5.515	0.00%	0	0	0	0	0	0	0	0.00%	-	0.00%	-	-	-		
BE	C	3.97%	5	3	6	3	2	7	9	2.15%	35	2.15%	1466	27701	20112	49.279	2.78%	1	3	3	2	1	2	1	3.23%	13	4.14%	1.466	13.851	20.112	12.320	
BG	Bk	3.17%	4	3	1	5	5	8	12	2.83%	38	2.43%	2934	3886	18342	25.162	0.00%	0	1	1	1	1	1	1	0.03%	6	1.91%	2.934	3.886	18.342	8.487	
CY	S	0.00%	0	0	0	0	0	0	0	0.00%	0	0.00%	0	110	44	154	0.00%	0	0	0	0	0	0	0	0.03%	-	0.00%	-	-	-		
CZ	E	4.76%	6	8	14	9	8	14	18	4.24%	77	4.72%	26539	44102	51193	121.834	8.33%	3	4	9	3	2	2	2	6.45%	25	7.96%	13.270	22.051	25.597	20.306	
DE	C	15.67%	21	18	24	23	16	26	26	6.12%	154	9.45%	39808	57625	37612	135.045	11.11%	4	9	5	10	6	4	3	9.68%	41	13.06%	6.635	14.406	12.537	10.388	
DK	N	0.79%	1	1	0	0	0	0	0	0.00%	2	0.12%	0	5	49	54	0.00%	0	0	0	0	0	0	0	0.03%	-	0.00%	-	-	-		
EE	N	1.59%	2	0	2	3	2	1	8	1.88%	18	1.40%	551	2226	16819	19.596	8.33%	3	1	1	1	1	0	1	2	6.45%	9	2.87%	-	7.489	8.408	12.846
EL	S	4.76%	6	4	8	3	10	5	12	2.83%	48	2.04%	14233	7489	16816	38.538	3.56%	2	0	0	1	1	0	0	0.00%	4	1.27%	-	4.677	19.103	10.548	
ES	S	0.00%	0	4	5	6	4	7	8	1.88%	34	2.09%	503	14031	38206	52.740	0.00%	0	0	0	0	0	0	0	0.00%	-	0.00%	-	-	-		
FI	N	0.79%	1	2	2	2	1	0	1	0.24%	9	0.55%	18	1816	1878	3.712	0.00%	0	0	0	0	0	0	0	3.23%	7	2.23%	18	-	1.878	1.856	
FR	C	10.32%	13	14	20	18	16	13	16	3.76%	110	6.75%	37035	8556	23286	68.877	8.33%	3	6	5	5	1	2	2	6.45%	24	7.64%	37.035	4.278	11.643	13.775	
HR	S	0.00%	0	3	3	4	6	6	7	1.65%	29	1.78%	3730	8964	15990	28.684	0.00%	0	1	2	1	1	0	0	0.00%	5	1.59%	3.730	-	-	-	
HU	E	7.14%	9	11	14	21	19	38	30	7.06%	142	8.71%	9229	20210	75811	105.250	2.78%	1	1	3	6	6	3	1	3.23%	21	6.69%	1.538	6.737	75.811	10.525	
IE	N	0.00%	0	0	1	1	0	1	1	0.24%	4	0.25%	0	16401	16410	32.811	0.00%	0	0	0	1	1	0	1	3.23%	4	1.27%	-	16.401	16.410	16.406	
IT	S	15.87%	20	12	30	43	37	73	116	27.29%	331	20.31%	46385	179622	176043	402.050	13.89%	5	5	14	7	9	3	5	16.13%	48	15.29%	5.154	59.874	35.209	23.650	
LT	N	0.79%	1	0	0	0	0	0	0	0.00%	1	0.06%	9768	9529	21349	40.646	0.00%	0	0	0	0	0	0	0	0.00%	-	0.00%	-	-	-		
LU	C	0.79%	1	0	0	0	0	0	0	0.00%	1	0.06%	4	149	4010	4.163	0.00%	0	0	0	0	0	0	0	0.00%	-	0.00%	-	-	-		
LV	N	3.17%	4	7	5	4	13	17	16	3.76%	66	4.05%	4344	24920	12727	41.991	2.78%	1	2	0	1	2	2	0	0.00%	8	2.55%	2.172	12.460	-	-	
ME	Bk	0.00%	0	0	0	0	0	0	1	0.24%	1	0.06%	0	0	470	470	0.00%	0	0	0	0	0	0	0	0.00%	-	0.00%	-	-	-		
MK	Bk	0.00%	0	0	1	1	3	0	3	0.71%	8	0.49%	3327	448	475	4.250	0.00%	0	0	0	1	0	0	0	0.00%	-	0.00%	-	-	-		
MT	S	0.00%	0	1	0	0	0	0	0	0.00%	1	0.06%	0	2018	2050	4.068	0.00%	0	0	0	0	0	0	0	0.00%	-	0.00%	-	-	-		
NL	C	0.79%	1	1	0	1	4	8	9	2.15%	24	1.47%	408	32953	38147	71.508	0.00%	0	1	0	0	1	2	1	3.23%	5	1.59%	-	-	-		
PL	E	15.87%	20	17	21	15	11	22	30	7.06%	136	8.14%	24201	127339	85531	237.071	25.00%	9	5	4	4	2	2	2	6.45%	28	8.93%	12.101	63.670	42.766	39.512	
PT	S	0.00%	0	1	0	0	1	1	3	0.71%	6	0.37%	59	176	8499	8.734	0.00%	0	1	1	1	3	1	0	0.00%	7	2.23%	59	-	-		
RO	BR	1.59%	2	1	3	9	8	10	17	4.00%	50	3.07%	1636	11535	25363	38.534	0.00%	0	1	1	1	3	1	0	0.00%	1	0.32%	-	-	-		
RS	Bk	0.00%	0	0	0	0	0	0	7	1.65%	7	0.43%	0	0	0	0	0.00%	0	0	0	0	0	0	0	0.00%	-	0.00%	-	-	-		
SE	N	0.79%	1	2	1	0	1	1	4	0.94%	10	0.61%	448	1330	8966	10.744	0.00%	0	0	0	1	0	0	1	3.23%	1	0.32%	-	-	-		
SI	E	0.79%	1	0	2	9	5	11	25	5.88%	53	3.25%	524	10371	43982	54.877	0.00%	0	0	0	0	0	0	0	0.00%	2	0.64%	-	1.330	-	-	
SK	E	0.00%	0	1	4	3	17	14	11	2.59%	50	3.07%	16129	13469	27619	57.217	0.00%	0	0	0	0	2	0	2	1	3.23%	5	1.59%	-	5.186	43.982	18.292
UK	N	1.59%	2	1	2	2	2	0	2	0.47%	11	0.67%	2598	6663	6828	16.089	0.00%	2	0	0	0	2	2	1	3.23%	7	2.23%	8.065	6.735	27.619	11.443	
TOTAL		100%	126	130	201	217	220	311	425	100%	1630	100%	249.210	641.829	823.933	1.714.972	100%	36	48	56	57	49	37	31	100%	314	100%	5.086	17.347	26.578	14.658	

TOT DE, FR, IT, HU, PL	83	72	109	120	99	172	218
% TOT DE, FR, IT, HU, PL	65.87%	55.38%	54.23%	55.30%	45.00%	55.31%	51.29%
% TOT OTHERS	34.13%	44.62%	45.77%	44.70%	55.00%	44.69%	48.71%

873
53.56%
46.44%

83	72	109	120	99	172	218
65.87%	55.38%	54.23%	55.30%	45.00%	55.31%	51.29%
34.13%	44.62%	45.77%	44.70%	55.00%	44.69%	48.71%

156.658	393.352	398.283	948.293
62.86%	61.29%	48.34%	55.29%
37.14%	38.71%	51.66%	44.71%

22	26	31	32	24	14	13
61.11%	54.17%	55.36%	56.10%	48.98%	37.84%	41.94%
38.89%	45.83%	44.64%	43.86%	51.02%	62.16%	58.06%

162
51.59%
48.41%

1	Northern Europe	N	9.52%	12	14	35	37	35	42	52	12.24%	227	13.93%
2	Southern Europe	S	20.63%	26	25	46	56	58	92	146	34.35%	449	27.55%
3	Central Europe	C	36.51%	46	50	60	52	51	60	68	16.00%	387	23.74%
4	Eastern Europe	E	26.57%	36	37	55	57	60	99	114	26.82%	458	28.10%
5	Balkans	Bk	4.76%	6	4	5	15	16	18	45	10.59%	109	6.69%

17.727	62.890	85.026	165.643
64.910	212.410	257.648	534.968
82.048	134.322	134.354	350.724
76.622	215.491	284.136	576.249
7.903	16.716	62.769	87.388
240.210	641.829	823.933	1.434.972



# CSP – Support to projects initiated by civil society organisations

projects awarded a grant													participants			projects awarded a grant													participants / projects awarded a grant								
Country	Area	2007%	2007	2008	2009	2010	2011	2012	2013	TOT	TOT %	2007%	2007	2008	2009	2010	2011	2012	2013	2013%	TOT	TOT %	2007%	2007	2008	2009	2010	2011	2012	2013	TOT	TOT %	2011	2012	2013	TOT	
AL	Bk	0,00%	0	0	0	1	0	1	7	59.622	0,00%	0	0	0	0	0	0	0	1	3,85%	1	0,17%	7,97%	11	11	8	5	1	0	0	1	3,85%	37	6,28%	-	46.752	59.622
AT	C	9,09%	26	26	18	12	19	12	13	75.831	7,97%	11	11	8	5	1	0	0	1	3,85%	37	6,28%	0,00%	0	0	0	0	0	0	0	0	0,00%	-	-	23.511	37.915	
BA	Bk	0,00%	0	0	0	0	0	0	11	7.095	0,00%	0	0	0	0	0	0	0	0	0,00%	-	-	0,00%	0	0	0	0	0	0	0	0,00%	-	-	-	-	-	
BE	C	8,04%	23	23	17	22	24	23	16	168.938	9,42%	13	13	10	9	3	2	1	3,85%	51	8,66%	9,42%	13	13	10	9	3	2	1	2	3,85%	51	8,66%	8.574	18.896	105.424	
BG	Bk	2,10%	6	6	4	29	23	23	25	128.359	2,17%	3	3	3	3	7	0	1	0	0,03%	17	2,89%	0,72%	3	3	3	3	7	0	1	1	3,85%	17	2,89%	-	32.448	-
CY	S	1,05%	3	3	3	2	1	0	2	10.610	0,72%	1	1	0	0	0	0	0	1	3,85%	3	0,51%	0,72%	3	3	3	6	1	2	2	1	3,85%	18	3,96%	-	3.264	10.610
CZ	E	2,10%	6	6	19	9	12	14	13	125.303	2,17%	3	3	6	1	2	2	1	3,85%	18	3,96%	2,17%	3	3	6	1	2	2	1	3,85%	18	3,96%	38.545	7.092	34.031		
DE	C	1,89%	34	33	52	65	48	35	6,10%	134.323	13,77%	19	19	8	19	3	4	1	3,85%	73	12,39%	13,77%	19	19	8	19	3	4	1	3,85%	73	12,39%	14.229	7.202	62.801		
DK	N	0,70%	2	2	2	4	3	2	3	2.497	0,72%	1	1	2	0	0	0	0	1	3,85%	5	0,85%	0,72%	1	1	2	0	0	0	0	0,03%	-	-	-	1.089	2.497	
EE	N	0,09%	0	0	0	2	1	1	3	13.572	0,09%	0	0	0	0	0	0	0	0	0,03%	-	-	0,09%	0	0	0	0	0	0	0	0,03%	-	-	-	-	-	
EL	S	3,15%	9	9	14	8	10	10	12	66.453	0,72%	1	1	4	3	2	1	1	3,85%	13	2,21%	0,72%	1	1	4	3	2	1	1	3,85%	13	2,21%	16.927	27.041	5.559		
ES	S	2,80%	8	8	11	8	17	23	22	98.126	0,60%	0	0	2	2	0	1	1	3,85%	6	1,02%	2,17%	3	3	1	1	1	0	1	1	3,85%	10	1,70%	-	5.571	4.086	
FI	N	1,40%	4	4	4	2	9	4	5	21.853	2,17%	3	3	1	1	1	0	1	3,85%	10	1,70%	11,59%	16	16	13	9	7	3	1	3,85%	65	11,04%	4.402	18.310	84.048		
FR	C	8,74%	25	25	28	24	34	36	23	169.792	11,59%	16	16	13	9	7	3	1	3,85%	65	11,04%	2,17%	3	3	4	6	2	0	1	3,85%	19	3,24%	13.621	-	24.614		
HR	S	3,50%	10	10	21	17	48	26	25	104.933	18,12%	25	25	19	15	1	1	2	7,69%	88	14,94%	18,12%	25	25	19	15	1	1	2	7,69%	88	14,94%	48.483	35.793	69.561		
HU	E	13,99%	40	40	57	64	134	107	72	223.397	0,00%	0	0	2	1	0	0	0	0,00%	3	0,51%	0,00%	0	0	2	1	0	0	0	0,00%	3	0,51%	-	-	-	-	-
IE	N	0,00%	0	0	0	6	4	1	4	20.989	0,00%	0	0	0	0	0	0	0	0	0,00%	4	0,68%	0,00%	0	0	1	0	1	1	1	3,85%	4	0,68%	4.218	18.249	47.460	
IT	S	13,99%	40	40	44	49	62	92	92	189.005	16,87%	15	15	11	12	5	4	2	7,69%	64	10,87%	16,87%	15	15	11	12	5	4	2	7,69%	64	10,87%	25.378	-	8.229		
LT	N	4,55%	13	13	24	28	27	13	7	40.940	4,55%	6	6	1	2	1	0	1	3,85%	17	2,89%	0,00%	0	0	0	0	0	0	0	0	0,00%	-	-	-	-	-	
LU	C	0,00%	0	0	0	0	1	0	0	33.285	0,00%	0	0	0	0	0	0	0	0	0,00%	-	-	0,00%	0	0	0	0	0	0	0	0,00%	-	-	-	-	-	
LV	N	0,00%	0	0	4	2	9	6	10	27.213	0,00%	0	0	1	0	1	0	1	3,85%	4	0,68%	0,00%	0	0	1	0	1	1	1	1	3,85%	4	0,68%	13.632	5.550	8.031	
ME	Bk	0,00%	0	0	0	0	0	0	0	10.637	0,00%	0	0	0	0	0	0	0	0	0,00%	-	-	0,00%	0	0	0	0	0	0	0	0,00%	-	-	-	-	-	
MK	Bk	0,00%	0	0	0	3	25	12	9	56.376	0,00%	0	0	0	0	1	1	1	0	0,04%	3	0,51%	0,00%	0	0	0	0	1	1	1	0	0,04%	3	0,51%	17.661	7.738	-
MT	S	0,00%	0	0	0	29	12	3	1	3.092	0,09%	0	0	0	0	1	1	1	0	0,04%	2	0,34%	0,00%	0	0	0	0	1	1	0	0,04%	2	0,34%	-	-	-	-
NL	C	2,45%	7	7	4	6	7	2	13	50.980	1,45%	2	2	2	2	2	0	1	3,85%	9	1,63%	1,45%	2	2	2	2	2	0	0	1	3,85%	25	4,24%	35.444	22.274	89.819	
PL	E	3,50%	10	10	14	11	22	17	23	182.980	9,42%	6	6	7	2	2	1	1	0	0,03%	6	1,02%	9,42%	6	6	7	2	2	1	1	3,85%	25	4,24%	1.946	-	-	
PT	S	1,05%	3	3	3	5	8	11	7	38.598	0,72%	1	1	2	1	1	0	0	1	3,85%	10	1,70%	0,72%	1	1	2	1	1	0	0	1	3,85%	10	1,70%	-	-	-
RO	Bk	1,05%	3	3	5	18	36	36	31	393.883	1,45%	2	2	4	1	0	0	0	1	3,85%	10	1,70%	1,45%	2	2	4	1	0	0	1	3,85%	10	1,70%	-	-	344.686	
RS	Bk	0,00%	0	0	0	0	0	0	26	50.506	0,00%	0	0	0	0	0	0	0	1	3,85%	1	0,17%	0,00%	0	0	0	0	0	0	1	3,85%	1	0,17%	-	-	50.506	
SE	N	1,05%	3	3	2	4	4	2	4	7.005	0,72%	1	1	2	1	0	1	1	3,85%	7	1,19%	0,72%	1	1	2	1	0	1	1	3,85%	7	1,19%	-	3.029	2.798		
SI	E	1,05%	3	3	6	20	26	27	4	67.434	0,72%	1	1	0	6	0	1	1	3,85%	10	1,70%	0,72%	1	1	0	6	0	1	1	3,85%	10	1,70%	-	29.345	13.370		
SK	E	0,70%	2	2	2	7	11	19	21	111.779	0,00%	0	0	1	0	1	1	1	3,85%	4	0,68%	0,00%	0	0	1	0	1	1	1	1	3,85%	4	0,68%	32.954	19.196	59.629	
UK	N	2,10%	6	6	9	7	14	15	8	45.920	3,62%	5	5	4	1	1	1	1	3,85%	18	3,06%	3,62%	5	5	4	1	1	1	1	1	3,85%	18	3,06%	5.292	31.893	8.735	
TOTAL		100%	286	286	356	448	665	590	574	2.741.325	100%	138	138	117	108	35	27	26	100%	589	100%	100%	138	138	117	108	35	27	26	100%	589	100%	18.135	24.390	55.696	31.151	

TOT DE, FR, IT, HU, PL	149	149	176	200	317	300	245
% TOT DE, FR, IT, HU, PL	52,10%	49,44%	44,64%	47,67%	50,85%	42,68%	
% TOT OTHERS	47,90%	47,90%	50,56%	52,33%	49,15%	57,32%	

TOT DE, FR, IT, HU, PL	149	149	176	200	317	300	245
% TOT DE, FR, IT, HU, PL	52,10%	49,44%	44,64%	47,67%	50,85%	42,68%	
% TOT OTHERS	47,90%	47,90%	50,56%	52,33%	49,15%	57,32%	

TOT DE, FR, IT, HU, PL	213.991	214.797	470.709	899.497
% TOT DE, FR, IT, HU, PL	33,71%	32,62%	32,51%	32,81%
% TOT OTHERS	66,29%	67,38%	67,49%	67,19%

TOT DE, FR, IT, HU, PL	81	81	58	57	18	13	7
% TOT DE, FR, IT, HU, PL	58,70%	58,70%	49,57%	52,78%	51,43%	48,15%	26,92%
% TOT OTHERS	41,30%	41,30%	50,43%	47,22%	48,57%	51,85%	73,08%

TOT DE, FR, IT, HU, PL	315
% TOT DE, FR, IT, HU, PL	53,48%
% TOT OTHERS	46,52%

1 Northern Europe	N	9,79%	28	28	53	52	68	49	47	8,19%	325	10,14%
2 Southern Europe	S	25,52%	73	73	96	118	158	165	161	28,03%	844	26,33%
3 Central Europe	C	40,21%	115	115	100	116	150	121	100	17,42%	817	25,49%
4 Eastern Europe	E	21,33%	61	61	98	111	205	183	156	27,18%	875	27,30%
5 Balkans	Bk	3,05%	9	9	9	51	84	72	110	19,16%	344	10,73%
TOTAL		100%	286	286	356	448	665	590	574	100%	3205	100%

1 Northern Europe	16	16	13	6	3	4	6	23,08%	64	10,87%
2 Southern Europe	21	21	23	25	11	6	6	23,08%	113	19,19%
3 Central Europe	61	61	41	44	14	9	5	19,23%	235	39,98%
4 Eastern Europe	35	35	33	24	6	6	6	23,08%	145	24,62%
5 Balkans	5	5	7	9	1	2	3	11,54%	32	5,43%
TOTAL	138	138	117	108	35	27	26	100%	589	100%

1 Northern Europe	25.068	15.140	7.371	13.845
2 Southern Europe	9.215	35.157	33.085	22.209
3 Central Europe	8.418	21.323	64.678	22.612
4 Eastern Europe	42.355	20.132	55.995	39.404
5 Balkans	86.157	37.164	181.998	117.746
TOTAL	18.135	24.390	55.696	31.151