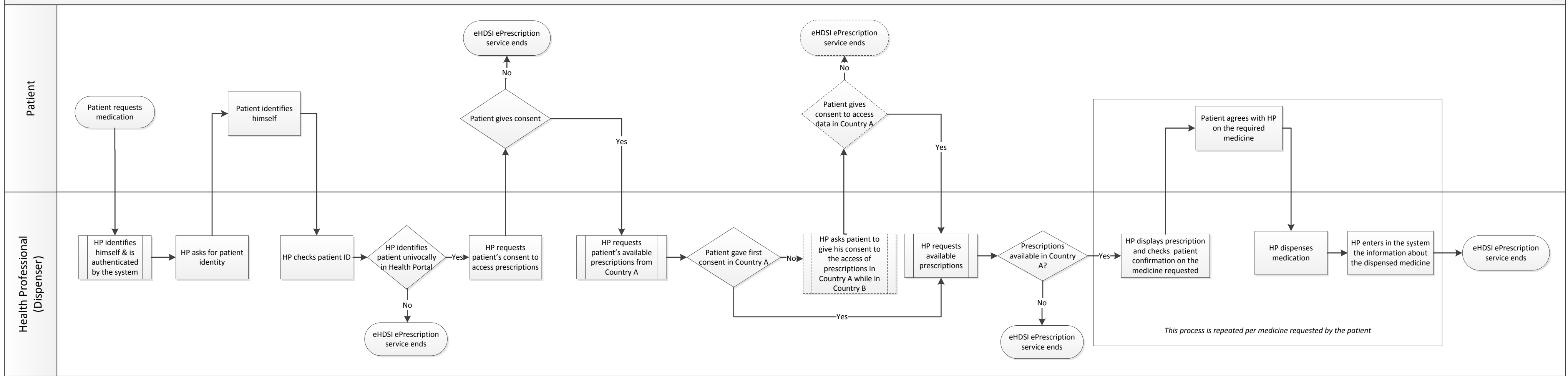


eHDSI - ePrescription use case

18/08/2017 V0.10

Phase



This diagram shows a simplified version of the ePrescription workflow with the aim of helping health professionals participating in the end-to-end functional testing.
 The interactions with the NCPeH in Country A and B as well as with the national infrastructure in Country A are not shown.
 Dashed lines are used to indicate that a process is optional (might be applicable depending on the specific case).