



Changes from the OCR

Jan Baele

RASFF Head of Sector

Smarter rules for safer food conference

RASFF is part of a new network: the ACN

- Alert and Cooperation Network (ACN) consisting of:

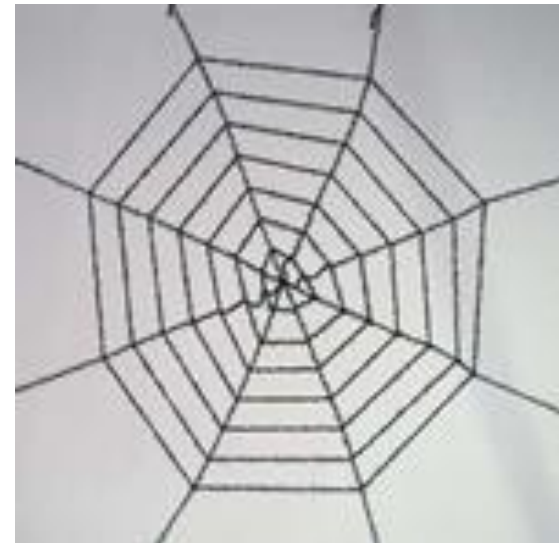
- Rapid Alert System for Food and Feed (RASFF)
- Administrative Assistance and Cooperation network (AAC)
- Food Fraud Network (FFN)



Single Contact Point

- Components of IMSOC:

- iRASFF
- ADIS
- EUROPHYT
- TRACES



New types of notifications in iRASFF



- iRASFF in IMSOC Regulation: mandatory use for
 - Non-compliance notification: **non-compliance that does not present a risk**
 - Alert notification
 - Information notification
 - News notification: **informal source, unverified information or as yet unidentified product**
 - Border rejection notification
 - Food fraud notification: **non-compliance notification in iRASFF concerning suspected intentional action by businesses or individuals for the purpose of deceiving purchasers and gaining undue advantage therefrom**

Follow-up notifications available for all but they do not require any more validation by the Commission, they are directly available to peers (except if they change the notification classification).

IMSOC = links between existing applications

- Link between iRASFF and TRACES to be reinforced to allow exchange of data concerning border rejections: border control posts to be informed of new iRASFF border rejection notifications through TRACES
- Link between iRASFF, TRACES and EUROPHYT allowing exchange of data concerning operators' past records of compliance



For IMSOC and the data exchange,

- the Commission shall:
 - Provide data dictionaries and business rules
 - Draw up a service-level agreement
 - Have access to all data for monitoring purpose
- The Commission may:
 - Grant partial access to a third country or international organisation



Partial access to IMSOC for third country competent authority or international organisation

- Needs to have the legal and operational capacity to provide assistance
- Needs to designate a contact point
- No access to personal data unless conditions fulfilled



Single contact point for RASFF and AAC

- Ensure immediate transmission of notifications, requests and responses and maintain them in good order
- Determine roles and responsibilities of competent authorities regarding the notifications, requests and responses
- Food fraud contact point may be part of single contact point
- Communication within RASFF network through the single contact point

RASFF versus AAC

- RASFF notifications:
 - Alert, information, news, border rejection
- AAC notifications:
 - Non-compliance notifications
 - Food fraud notifications

RASFF versus AAC (cont.)

- Workflow in RASFF: Commission verifies the notification first and then transmits to all members: except border rejection which will now be verified after transmission.
- Workflow in AAC: one member requests assistance or shares for info with other members. Only those members have access to the notification.
- Increased transparency of AAC: other members as well as the public will have access to a summary concerning the AAC notifications.
- An annual report will be prepared of all notifications in iRASFF.
- Food fraud notifications are restricted to the food fraud network.

Notification withdrawal, amendment or closure: rules of RASFF extended

- Withdrawal:
 - non-compliance notification, food fraud notification or follow-up notification: by the notifying contact point
 - RASFF notification: by the Commission contact point in agreement with the notifying contact point
- Amendments: with the agreement of the notifying contact point

Notification withdrawal, amendment or closure: rules of RASFF extended (cont.)

- Closure: automatic if one of the following conditions is met
 - No follow-up requests pending
 - All requests responded
 - No response to the last request six months after the request was transmitted
- Personal data retention period: 10 years counting from the date of closure