



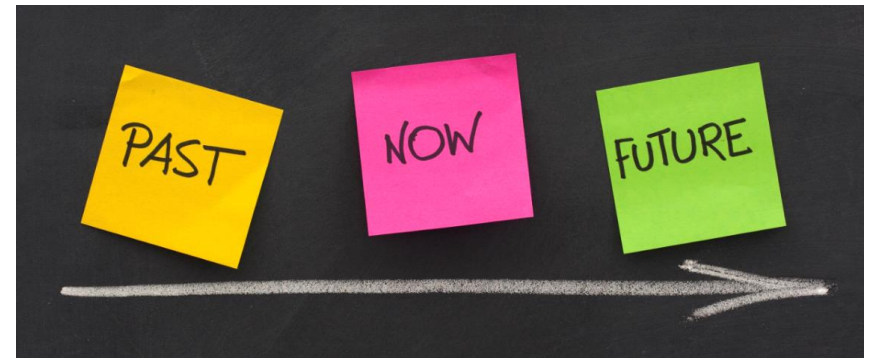
The new Official Controls Regulation – an overview

**Bernard Van Goethem,
Director SANTE/G,
European Commission**

Continuation

The new legislation is based on existing principles, such as:

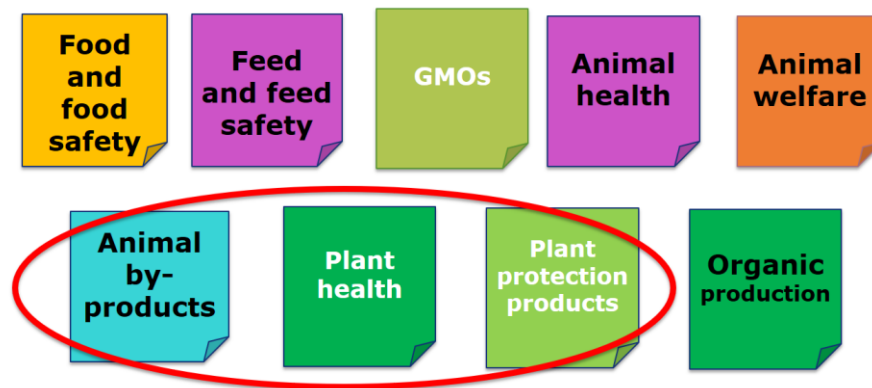
- a risk-based approach to controls, and
- early detection and prevention.



Harmonisation

Wider scope of the Official Controls Regulation to also include plant health.

Extensive, risk-based system for official controls along the entire agri-food chain, including on animals and goods entering the EU.



Modernisation

New digital tools for a more efficient enforcement.

Stronger stance to support animal welfare.

Better mechanisms to prevent food fraud.



Greater transparency

Member States' multi-annual Control Plans must be published.

Consult stakeholders on the methods used for calculating the fees, and to make public the data used.

Result: Increased transparency will enhance the accountability of the Competent Authorities.



Stronger stance against food fraud

Food fraud is threatening the proper functioning of the internal market, and may also lead to public health risks.

Competent authorities will be obliged to take into account the risk of fraud when deciding the appropriate frequency of their controls.



Stringent penalties in place

Effective, proportional and dissuasive penalties.

More stringent rules for financial penalties for fraud, to reflect the economic advantage of the operator or a percentage of the operator's turnover.



Better (cross-border) cooperation

Strengthened rules on Member States' cooperation and administrative assistance.

Facilitated exchange of information between authorities.

"IMSOC" will integrate existing computerised systems, including TRACES and RASFF.



Conclusion

The Official Controls Regulation and the Plant Health Regulation represent important continuation, harmonisation, and modernisation.

The new Official Controls Regulation:

- more risk-based and efficient controls along the entire the agri-food chain,
- greater accountability of public authorities and
- a stronger stance against food fraud.

