

# 40 years of RASFF

Now that RASFF has 40 years on its counter, what is the path ahead?

Supported by science with the European Food Safety Authority (EFSA) RACE tool (rapid assessment of contaminants exposure)



Connected to the world with a systematic communication with INFOSAN

With iRASFF, an online system connected to the TRACES system



THE PAST DECADE, WE HAVE MODERNISED RASFF...



and to consumers through the RASFF Consumers' Portal

But we still face formidable challenges to...

● Improve interactions between RASFF and stakeholders, and improve collaboration globally on rapid alerts.

● Tackle the increasing complexity of food/feed processing and distribution.

● Become smarter to differentiate between trivial and serious health risks.

● Respond to an enhanced capacity to analyse foods and detect foodborne outbreaks.

● Address novel commercial practices such as e-commerce.

● Contribute to a more sustainable and eco-friendly food system while maintaining a high level of health protection.



Publications Office  
of the European Union

Luxembourg: Publications Office  
of the European Union, 2019  
© European Union, 2019  
Reuse is authorised provided the  
source is acknowledged.

PRINT  
ISBN 978-92-76-11256-3  
doi:10.2875/46362  
EW-04-19-759-EN-C

PDF  
ISBN 978-92-76-11257-0  
doi:10.2875/885361  
EW-04-19-759-EN-N



# Official Controls Regulation (OCR)

The new Official Controls Regulation becomes applicable on 14 December 2019, and aims at establishing an integrated and uniform approach to official controls along the agri-food chain.

By bringing greater transparency to controls, the new rules will further increase the authorities' accountability to consumers and businesses and enable them to obtain information about the way agri-food chain rules are applied and enforced in the EU.

## REVISED

the OCR builds on the risk-based approach and common principles of the existing regulatory framework ensuring continuity to authorities, stakeholders and trading partners.

## MODERNISED

the OCR takes a stronger stance to support animal welfare and prevent food fraud. It contains new digital tools and promotes a more efficient enforcement.



## HARMONISED

with an extended scope, the OCR establishes a common system for official controls as regards food and feed safety, animal health and welfare and plant health in the internal market and for controls on animals and goods entering the EU.

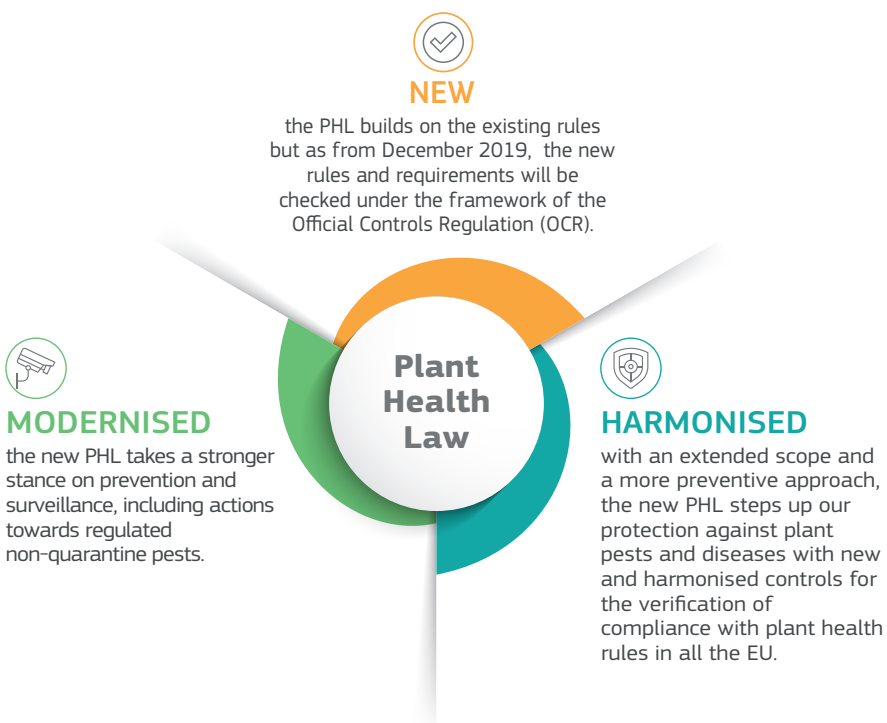


# Plant Health Regulation (PHL)

The new Plant Health Regulation (PHL) becomes applicable on 14 December 2019. It provides comprehensive and clear rules for the prevention of plant pests entering into the Union and spread within its territory.

If they are not stopped at borders they can rapidly spread, damaging private and public green spaces, devastating crops, and harming Europe's landscapes and the health of the environment.

Under the OCR five Plant Health European Reference Laboratories (EURLs) have been designated: bacteria, viruses, insects, fungi and nematodes (roundworms).



The UN has proclaimed 2020 the International Year of Plant Health.

