



Union Database for Biofuels (UDB)

UDB Onboarding Training

Registering Trade Transactions Online

Liquid Fuel Value Chain

DEMO – End To End Scenario

Register trades as below:

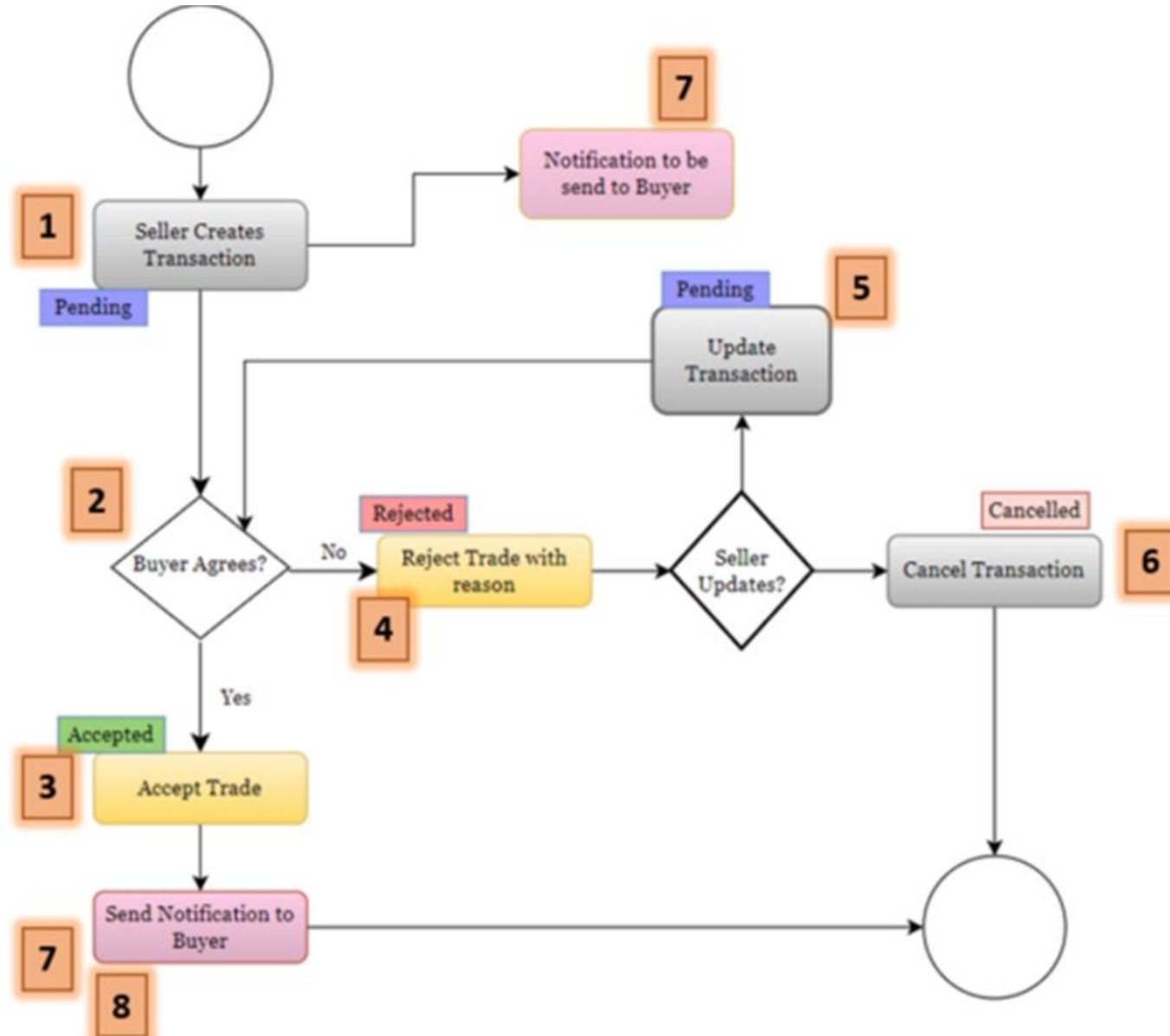
- **Initial Stock Registration** - Soybean
- **Seller Transaction** - to Conversion Unit

(Unique identifier POSs generated from Point of Origin trade)
- **Material processing** - at Conversion Unit (Soybeans to Vegetable Oil).

(Previous POS generated from previous seller transaction and original POS from initial stock – Unique identifier POS)
- **Seller Transaction** - Conversion unit to Biodiesel plant for Vegetable oil.

(Previous POS and Original POS (Unique identifier) generated from material processing as it is now a new material)
- **Material processing** - for Biodiesel producer – (Input= Vegetable Oil and Output = Glycerin)
- **Seller Transaction** - The Glycerin from the output of Biodiesel Producer sold to another Trader

Transaction Flow



Thank you