



European
Commission

May 2018

Statistical Factsheet

United Kingdom



CONTENTS

Main figures	1
1. KEY DATA	2
2. POPULATION & ECONOMY	3
3. FINANCIAL ASPECTS	4-5
4. ECONOMIC ACCOUNTS	6-12
5. AGRICULTURAL TRADE	13-14
6. FARM STRUCTURE	15-16

Main figures - Year 2017		
Population (1 st January)	65 808 573	persons
Area*	248 530	km ²
Currency	GBP	pound sterling
Nominal GDP at current prices	2 318 052	million EUR
GDP per capita at current prices	35 106	EUR
GDP per capita at purchasing power	31 862	PPS
Harmonised index of consumer prices	2.7%	change over previous year
Unemployment rate	4.5	% of labour force
Exports (goods & services)**	546 018	million EUR
Imports (goods & services)**	611 429	million EUR
Balance (goods & services)***	-33 660	million EUR
Exports of agricultural products	25 413	million EUR
Imports of agricultural products	54 109	million EUR
Current account balance	-5.1	% of GDP
General government balance	-2.1	% of GDP
General government gross debt	86.6	% of GDP

Sources: European Commission, Eurostat, and Directorate General for Economic and Financial Affairs.

Updated: May 2018

* Data refer to the year 2015

** 2010 prices

*** current prices

United Kingdom

1. KEY DATA

Macroeconomics				
Population (new European Commission methodology)				
Total population (number of persons), of which:	2016	65 382 556	12.9%	of EU-28
in predominantly rural regions (PR)	2016	3.6%	19.2%	in EU-28
in intermediate regions	2016	21.7%	36.0%	in EU-28
in predominantly urban regions	2016	74.6%	44.8%	in EU-28
Population in PR regions (number of persons)	2016	2 379 643	2.4%	of EU-28
GDP				
In EUR (current prices):				
Million EUR	2017	2 318 052	14.4%	of EU-28
GDP per capita	2017	35 106	29 833	in EU-28
GDP per capita (PPS)	2017	31 862	29 833	in EU-28
Real GDP growth rate (% change over previous year)	2017	1.5%	2.3%	in EU-28
Gross value added				
Agriculture, forestry and fishing (% of total GVA)	2017	0.6%	1.6%	in EU-28
Financial aspects				
Agricultural expenditure				
Total expenditure (million EUR), of which:	2017	3 927.0	0.0%	of EU-28
Direct payments (%)	2017	78.5%	70.6%	in EU-28
Market measures (%)	2017	2.3%	5.1%	in EU-28
Rural development (%)	2017	19.2%	24.3%	in EU-28
Economic accounts of agriculture				
Agricultural output				
Agricultural goods output (million EUR), of which:	2017	27 862.2	7.2%	of EU-28
Crop output, of which:	2017	40.1%	5.3%	of EU-28
Cereals (including seeds)	2017	13.2%	8.0%	of EU-28
Industrial crops	2017	5.0%	6.5%	of EU-28
Forage plants	2017	1.3%	1.5%	of EU-28
Vegetables and horticultural products	2017	11.6%	5.9%	of EU-28
Potatoes	2017	3.4%	8.5%	of EU-28
Fruits	2017	3.1%	3.4%	of EU-28
Wine	2017	0.0%	0.0%	of EU-28
Olive oil	2017	0.0%	0.0%	of EU-28
Animal output, of which:	2017	59.9%	9.6%	of EU-28
Cattle	2017	15.7%	13.3%	of EU-28
Pigs	2017	5.6%	4.1%	of EU-28
Sheep and goats	2017	6.4%	33.2%	of EU-28
Poultry	2017	10.7%	14.0%	of EU-28
Milk	2017	17.4%	8.2%	of EU-28
Eggs	2017	2.8%	7.4%	of EU-28
Gross value added at basic prices (million EUR)	2017	11721.2	6.5%	of EU-28
Agricultural input				
Total intermediate consumption (million EUR)	2016	19 163.9	7.9%	of EU-28
Agricultural income				
Indicator A (% change over previous year)	2017	18.8%	8.4%	in EU-28
Farm structure				
Holdings				
Total (No), of which:	2013	183 040	1.7%	of EU-28
UAA < 5 ha (%)	2013	6.9%	66.3%	in EU-28
Economic size < 4 000 €	2013	15.8%	55.7%	in EU-28
Holder < 35 years (%)	2013	3.9%	6.0%	in EU-28
Holder > 64 years (%)	2013	30.5%	31.1%	in EU-28
UAA per holding (has)	2013	94.7	16.1	in EU-28
Labour force				
Persons (No), of which:	2013	431 260	1.9%	of EU-28
Women (%)	2013	29.0%	41.8%	in EU-28
Holders (%)	2013	40.3%	46.8%	in EU-28
Agriculture in % of total employment	2016	1.0%	4.0%	in EU-28

Sources: European Commission, Eurostat and Directorate General for Agriculture and Rural Development.

Updated: May 2018

United Kingdom

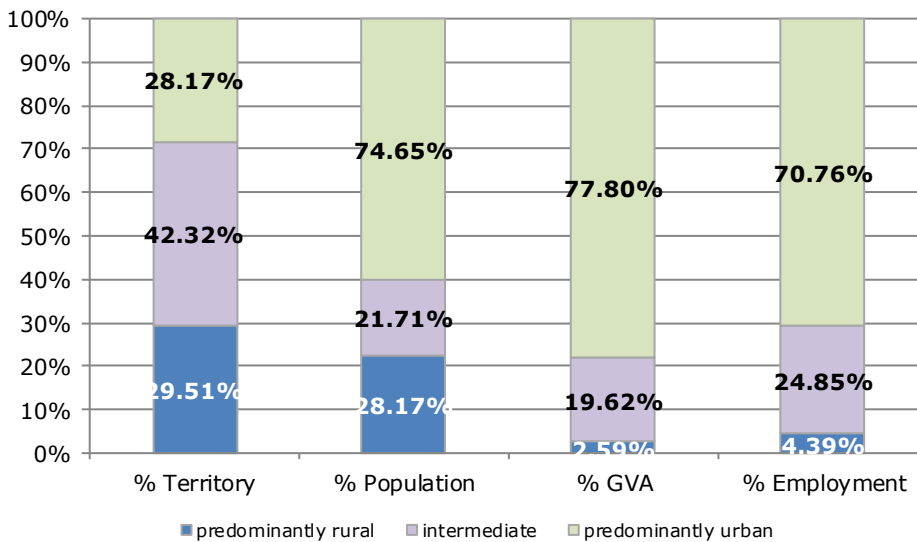
2. POPULATION AND ECONOMY

Importance of rural areas

	Territory (km ²)	Population (persons)	GVA (Million EUR)	Employment (persons)
Year	2015	2016	2014	2016
Predominantly Rural Regions	73 332	2 379 643	51 456	1 146 000
Intermediate Regions	105 185	14 197 566	390 339	6 485 200
Predominantly Urban Regions	70 013	48 805 347	1 548 186	18 463 000
Total	248 530	65 382 556	1 989 982	26 094 200

Source: Eurostat.

Updated: May 2018



Economic forecast

Indicators	2010	2011	2012	2013	2014	2015	2016	2017	2018	2019
GDP										
In million EUR (current prices)	1 841 684	1 883 963	2 078 291	2 063 636	2 278 893	2 602 156	2 393 124	2 318 052	2 356 182	2 424 375
Per capita (in PPS; current prices)	27 426	27 601	28 488	28 881	30 142	31 466	31 547	31 862	32 485	33 154
% change over previous period										
GDP growth (at constant prices)	1.7%	1.5%	1.5%	2.1%	3.1%	2.3%	1.8%	1.5%	1.3%	1.1%
GDP deflator	5.5%	0.8%	8.7%	-2.7%	7.2%	11.6%	-9.7%	-4.5%	0.4%	1.7%
Harmonised index of consumer prices	3.3%	4.5%	2.8%	2.6%	1.5%	0.0%	0.6%	2.7%	2.6%	2.1%
Exports (goods and services)	5.9%	6.2%	0.2%	0.8%	2.7%	5.0%	1.1%	4.7%	3.1%	2.9%
Imports (goods and services)	8.5%	0.9%	2.7%	3.1%	4.5%	5.1%	4.3%	2.6%	2.1%	2.1%
Net exports of goods and services (million EUR)	-47 990	-29 003	-41 146	-41 645	-45 689	-44 597	-52 488	-33 660	-23 536	-15 524
% of total employment										
Unemployment rate	7.8	8.1	7.9	7.5	6.1	5.3	4.8	4.5	4.7	4.8
% of GDP										
Current account balance	-2.7	-1.8	-3.6	-4.4	-4.6	-4.2	-4.3	-5.1	-4.6	-4.4
General government balance	-9.4	-7.5	-8.2	-5.4	-5.5	-4.3	-2.9	-2.1	-2.0	-1.5
General government gross debt	75.6	81.3	84.5	85.6	87.4	88.2	88.3	86.6	85.3	84.2

Source: European Commission, Eurostat and Directorate General for Economic and Financial Affairs

Updated: May 2018

Data for 2018 and 2019 is a forecast

3.1. AGRICULTURE: FINANCIAL ASPECTS

CAP expenditure

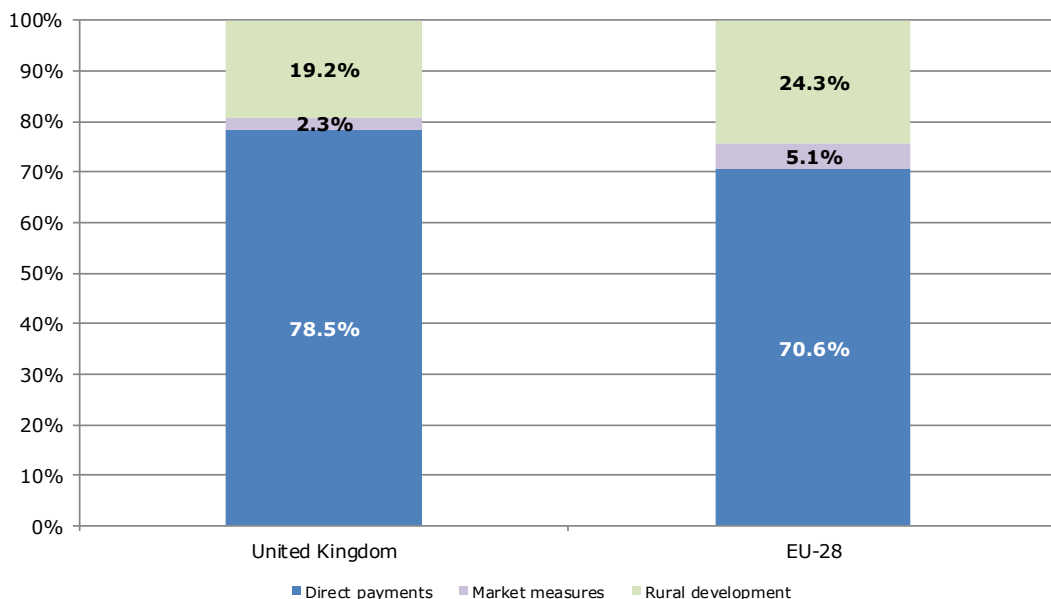
Measures	2017		
	1 000 EUR		
Decoupled direct aids	2 991 213	76.2%	97.1%
Other direct aids	52 385	1.3%	1.7%
Additional amounts of aid	1	0.0%	0.0%
Reimbursement of direct aids in relation to financial discipline	38 355	1.0%	1.2%
Direct payments	3 081 954	78.5%	100.0%
Olive oil	0	0.0%	0.0%
Textile plants	0	0.0%	0.0%
Fruit and vegetables	40 175	1.0%	44.4%
Wine sector	0	0.0%	0.0%
Promotion	2 640	0.1%	2.9%
Other plant products/measures	0	0.0%	0.0%
Milk and milk products	47 028	1.2%	52.0%
Beef and veal	0	0.0%	0.0%
Sheepmeat and goatmeat	0	0.0%	0.0%
Pigmeat, eggs, poultry and other	591	0.0%	0.7%
School schemes*	0	0.0%	0.0%
Market measures	90 435	2.3%	100%
Rural development	754 570	19.2%	
TOTAL	3 926 959	100.0%	

Note: Expenditure in commitments for direct payments and market measures; ceilings of support for rural development.

* Programme implementation based on school years; reimbursement possible in the next financial year

Source: European Commission, Directorate General for Agriculture and Rural Development

Distribution of CAP expenditure



3.2. AGRICULTURE: FINANCIAL ASPECTS

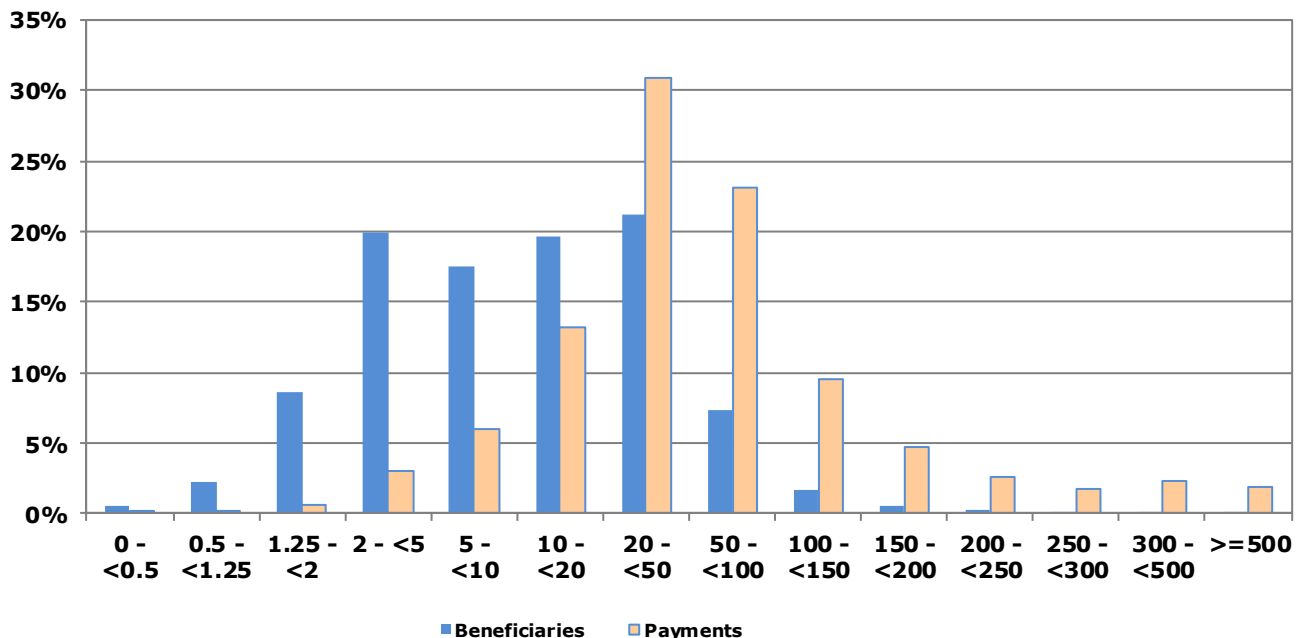
Distribution of direct aids to the producers

Size-class of aid (all direct payments)	Financial year 2017			
	Beneficiaries		Payments in EUR	
	x 1 000	% of total	x 1 000	% of total
< 0 €	0.03	0.02%	- 36	0.0%
≥ 0 and < 500 €	0.76	0.53%	196	0.0%
≥ 500 and < 1 250 €	3.25	2.26%	2 992	0.1%
≥ 1 250 and < 2 000 €	12.32	8.58%	19 759	0.6%
≥ 2 000 and < 5 000 €	28.57	19.91%	94 923	3.1%
≥ 5 000 and < 10 000 €	25.26	17.60%	183 728	6.0%
≥ 10 000 and < 20 000 €	28.28	19.71%	407 493	13.2%
≥ 20 000 and < 50 000 €	30.39	21.18%	954 057	30.9%
≥ 50 000 and < 100 000 €	10.48	7.30%	714 349	23.2%
≥ 100 000 and < 150 000 €	2.45	1.71%	294 080	9.5%
≥ 150 000 and < 200 000 €	0.86	0.60%	147 322	4.8%
≥ 200 000 and < 250 000 €	0.36	0.25%	79 807	2.6%
≥ 250 000 and < 300 000 €	0.20	0.14%	54 539	1.8%
≥ 300 000 and < 500 000 €	0.20	0.14%	73 128	2.4%
≥ 500 000 €	0.07	0.05%	58 837	1.9%
Total	143.47	100%	3 085 174	100%

Source: European Commission, Directorate General for Agriculture and Rural Development.

Note: In order to protect the anonymity of the beneficiaries, numbers less than 10 have been made invisible in this table.

Indicative figures on the distribution of direct aid by size-class of aid (1 000 EUR)



4.1. AGRICULTURE: ECONOMIC ACCOUNTS

Agricultural output

Output components (constant prices)	2015	2016	2017		
	Million EUR		Million EUR	% of total	% of EU-28
Cereals:	3210	2555	3122	13.2%	7.4%
Wheat and spelt	2 217	1 717	2 114	8.9%	10.0%
Rye and meslin	3	3	3	0.0%	0.3%
Barley	895	741	909	3.8%	11.7%
Oats and summer cereal mixtures	92	92	94	0.4%	7.4%
Grain maize	0	0	0	0.0%	0.0%
Rice	0	0	0	0.0%	0.0%
Other cereals	2	1	2	0.0%	0.1%
Industrial crops:	1 138	910	1 180	5.0%	6.0%
Oil seeds and oleaginous fruits	778	588	755	3.2%	6.7%
Protein crops	148	139	165	0.7%	13.0%
Raw tobacco	0	0	0	0.0%	0.0%
Sugar beet	187	159	236	1.0%	6.8%
Other industrial crops	24	24	24	0.1%	0.7%
Forage plants	291	295	298	1.3%	1.4%
Vegetables and horticultural products	2 669	2 759	2 741	11.6%	5.3%
Potatoes	623	792	805	3.4%	7.8%
Fruits	745	708	737	3.1%	3.0%
Wine	0	0	0	0.0%	0.0%
Olive oil	0	0	0	0.0%	0.0%
Other crop products	555	606	606	2.6%	21.6%
Crop output	9 230	8 624	9 488	40.1%	4.8%
Animals:	9 051	8 944	9 324	39.4%	9.9%
Cattle	3 720	3 613	3 716	15.7%	12.2%
Pigs	1 171	1 169	1 329	5.6%	3.8%
Equines	197	197	192	0.8%	18.7%
Sheep and goats	1 522	1 543	1 510	6.4%	30.6%
Poultry	2 399	2 380	2 535	10.7%	12.8%
Other animals	42	42	41	0.2%	1.8%
Animal products:	4 758	4 176	4 845	20.5%	7.3%
Milk	3 963	3 467	4 123	17.4%	7.6%
Eggs	736	639	653	2.8%	6.8%
Other animal products	59	70	69	0.3%	2.7%
Animal output	13 809	13 120	14 168	59.9%	8.8%
Agricultural goods output	23 040	21 744	23 656	100.0%	6.6%

Source: Eurostat, Economic Accounts for Agriculture (values at real producer prices).

Updated: May 2018

4.2. AGRICULTURE: ECONOMIC ACCOUNTS

Agricultural input

Input components	2015	2016	2017	2016/2015	2017/2016
	Million EUR			% Change	
Seeds and planting stock	769	774	815	0.7%	5.2%
Energy	1 285	1 212	1 371	-5.7%	13.1%
Fertilisers and soil improvers	1 504	1 324	1 412	-12.0%	6.6%
Plant protection products	1 040	1 009	1 017	-3.0%	0.7%
Veterinary expenses	500	486	484	-2.8%	-0.4%
Feedingstuffs	5 111	4 821	4 903	-5.7%	1.7%
Maintenance of materials	1 024	1 011	1 018	-1.3%	0.7%
Maintenance of buildings	705	689	673	-2.3%	-2.4%
Agricultural services	1 187	1 163	1 155	-2.0%	-0.8%
Other goods and services	3 421	3 326	3 314	-2.8%	-0.4%
Total intermediate consumption	16 653	15 926	16 271	-4.4%	2.2%
Fixed capital consumption	2 943	2 969	2 971	0.9%	0.0%

Note: 2017 data are estimates and may still change

Source: Eurostat, Economic Accounts for Agriculture: values at real basic prices (2010 = 100)

Updated: May 2018

Agricultural income

Values at basic prices	2015	2016	2017	2016/2015	2017/2016
	Million EUR			% Change	
Output of the agricultural "industry":	25 619	24 328	26 223	-5.0%	7.8%
Crop output	9 230	8 624	9 488	-6.6%	10.0%
Animal output:	13 809	13 120	14 168	-5.0%	8.0%
<i>Animals</i>	9 051	8 944	9 324	-1.2%	4.2%
<i>Animal products</i>	4 758	4 176	4 845	-12.2%	16.0%
Agricultural services	1 187	1 163	1 155	-2.0%	-0.8%
Secondary activities	1 393	1 420	1 412	2.0%	-0.6%
- Intermediate consumption	16 653	15 926	16 271	-4.4%	2.2%
= Gross value added at basic prices	9 006	8 448	9 998	-6.2%	18.3%
- Consumption of fixed capital	2 943	2 969	2 971	0.9%	0.0%
- Taxes	103	100	97	-3.6%	-2.2%
+ Subsidies	3 059	3 281	3 331	7.3%	1.5%
= Factor income	9 019	8 661	10 261	-4.0%	18.5%
Agricultural income* (2010=100)	99.3	96.5	114.6	-2.8%	18.8%

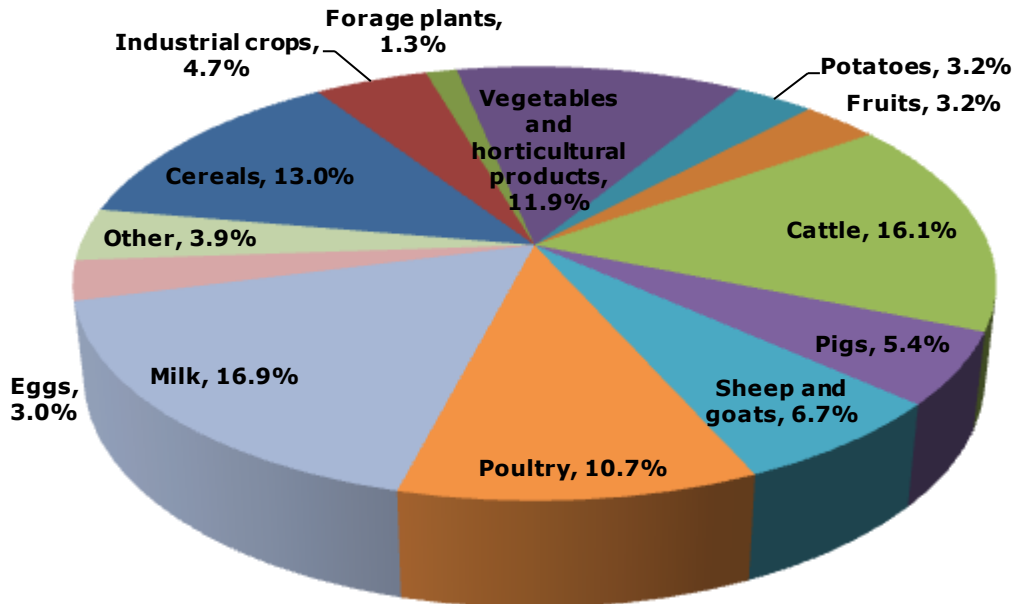
Note: 2017 data are estimates and may still change

Source: Eurostat, Economic Accounts for Agriculture (values at real prices; constant prices for *Indicator A - see definition at the end of this document).

Updated: May 2018

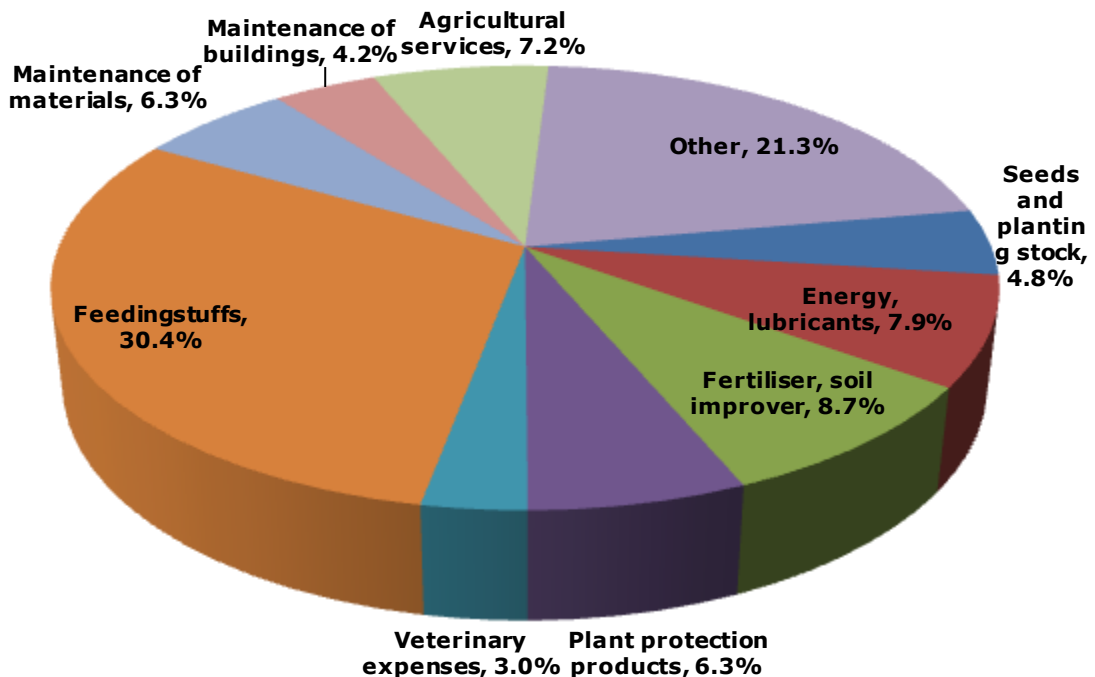
4.3. AGRICULTURE: ECONOMIC ACCOUNTS

Output components (2015-2017 average)



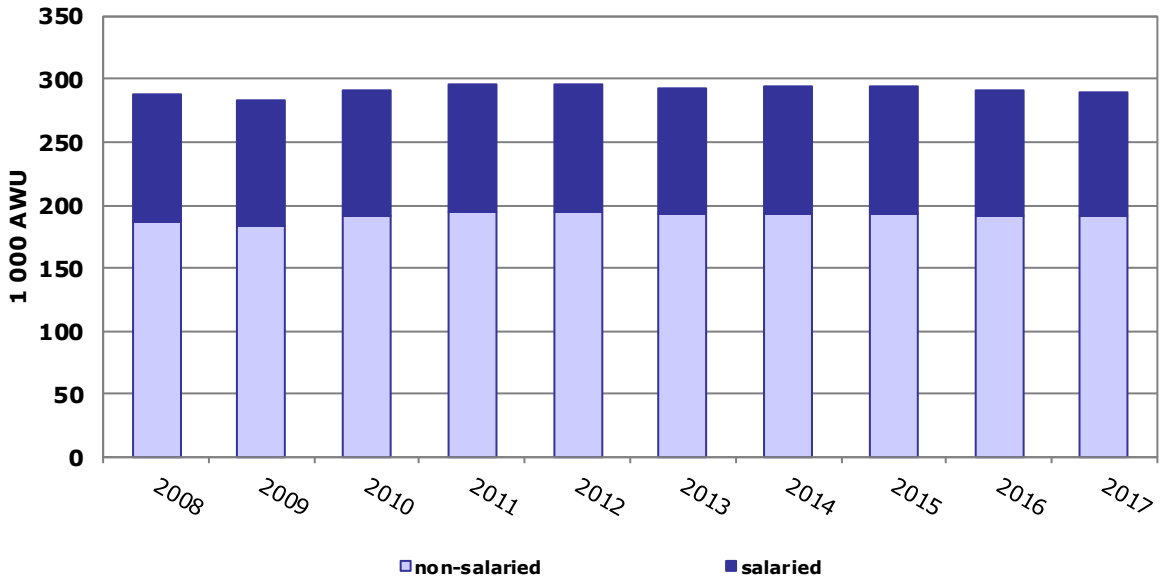
Source: Eurostat, Economic Accounts for Agriculture (values at real producer prices)
Updated: May 2018

Intermediate consumption (2015-2017 average)



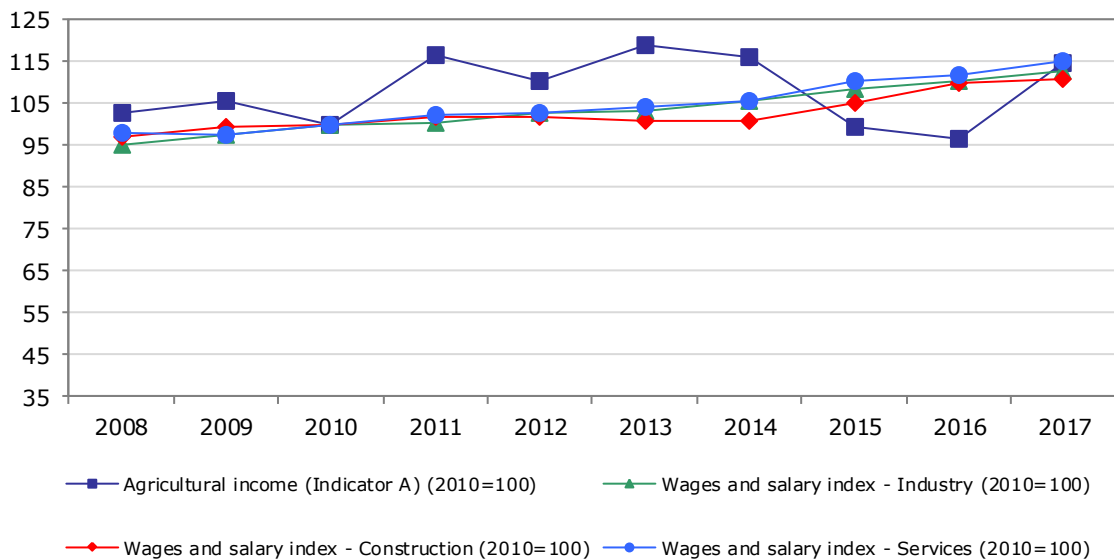
Source: Eurostat, Economic Accounts for Agriculture (values at real basic price)
Updated: May 2018

Evolution of agricultural labour input



Source: Eurostat Updated: May 2018

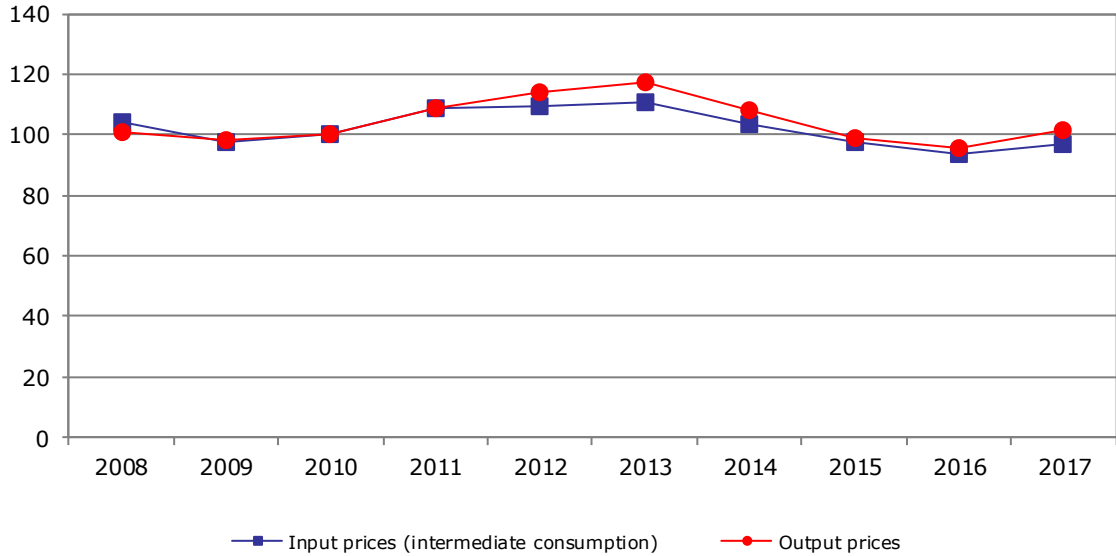
Evolution of agricultural income (*) compared to wages and salaries in other sectors of the economy



Source: Eurostat Updated: May 2018

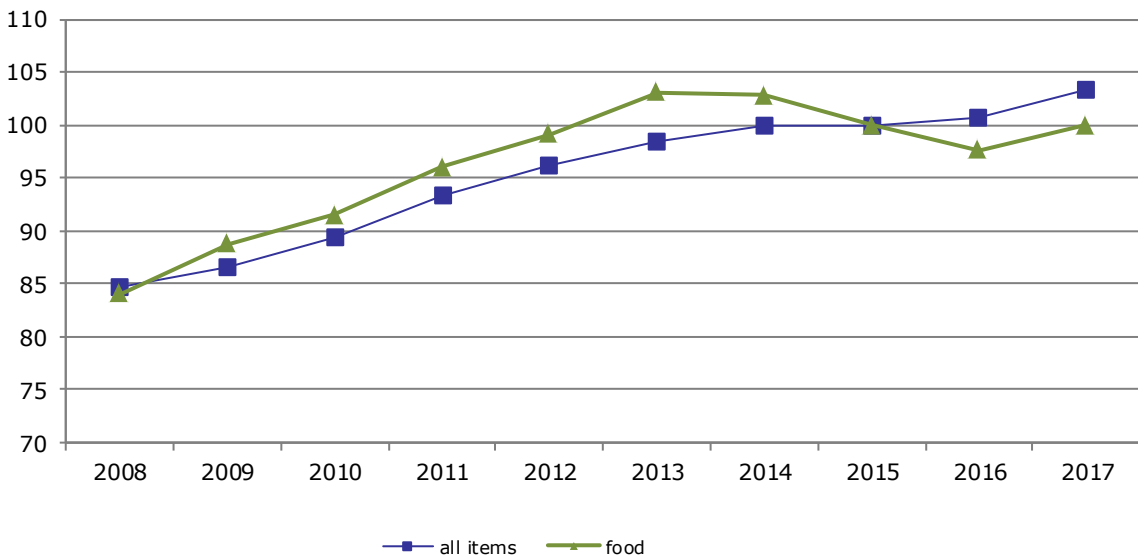
(*) The so-called indicator A is the real net value added at factor cost of agriculture per annual work unit (AWU). The net value added at factor cost (factor income) is calculated by subtracting the consumption of fixed capital from gross value added at basic prices and adding the value of subsidies less taxes. The AWU is defined as the work volume corresponding to one full-time employed worked.

Evolution of agricultural input and output prices



Source: Eurostat Updated: May 2018

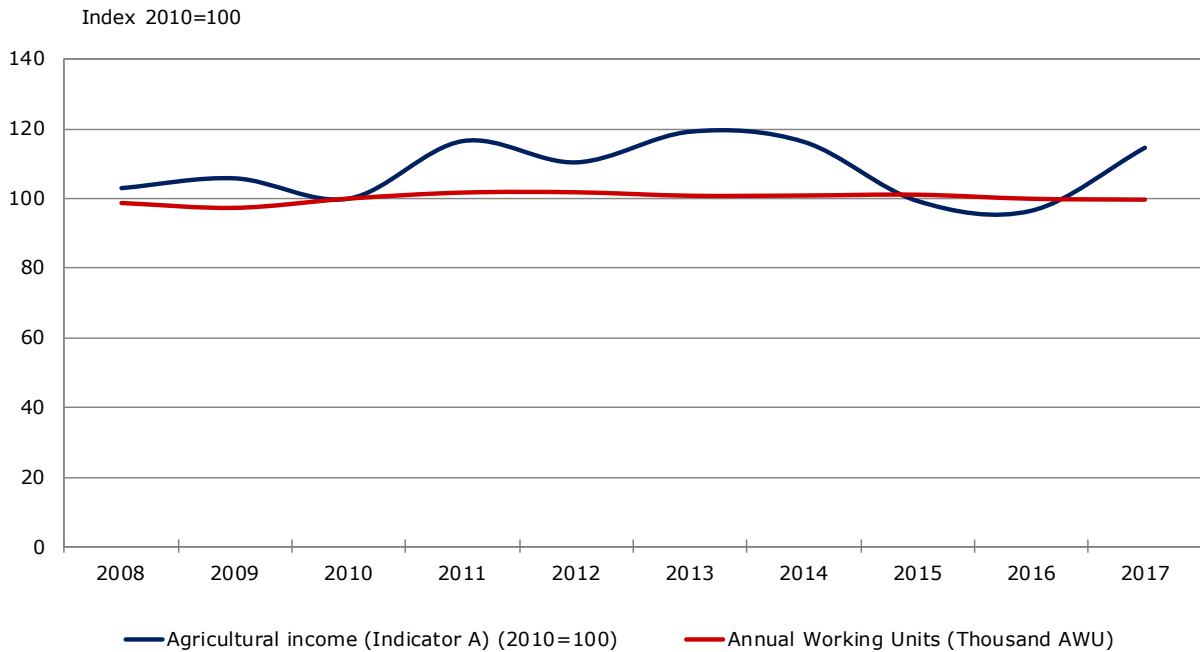
Evolution of harmonised indices of consumer prices



Source: Eurostat Updated: May 2018

4.6. AGRICULTURE: ECONOMIC ACCOUNTS

Farmers' income and labour development index (real terms)

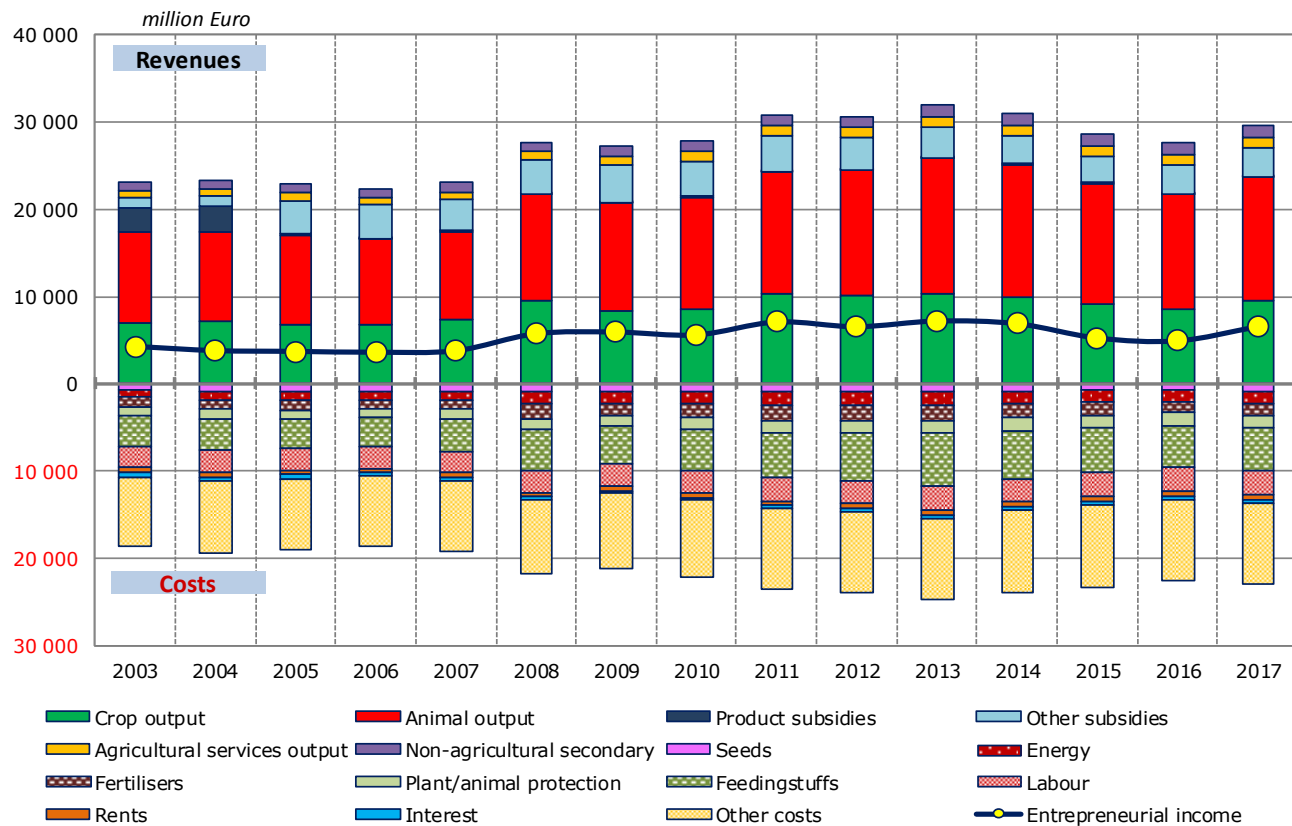


Source: Eurostat and DG Agriculture and Rural Development

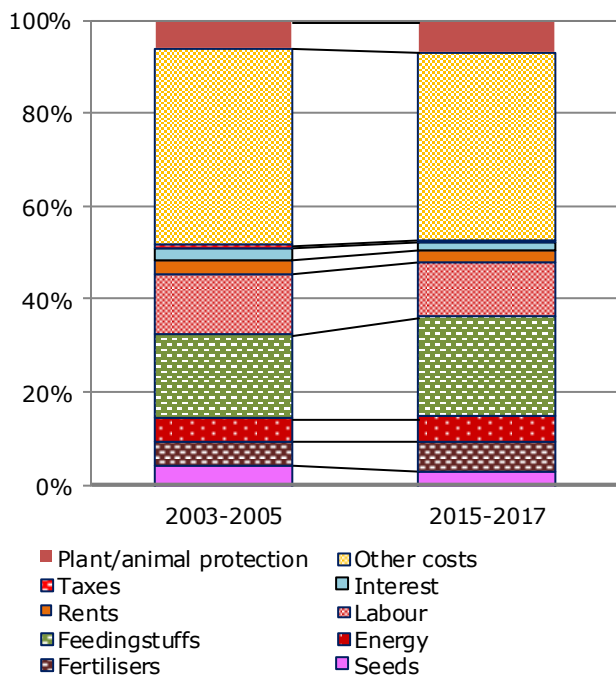
Updated: May 2018

(*) The so-called indicator A is the real net value added at factor cost of agriculture per annual work unit (AWU). The net value added at factor cost (factor income) is calculated by subtracting the consumption of fixed capital from gross value added at basic prices and adding the value of subsidies less taxes. The AWU is defined as the work volume corresponding to one full-time employed worked.

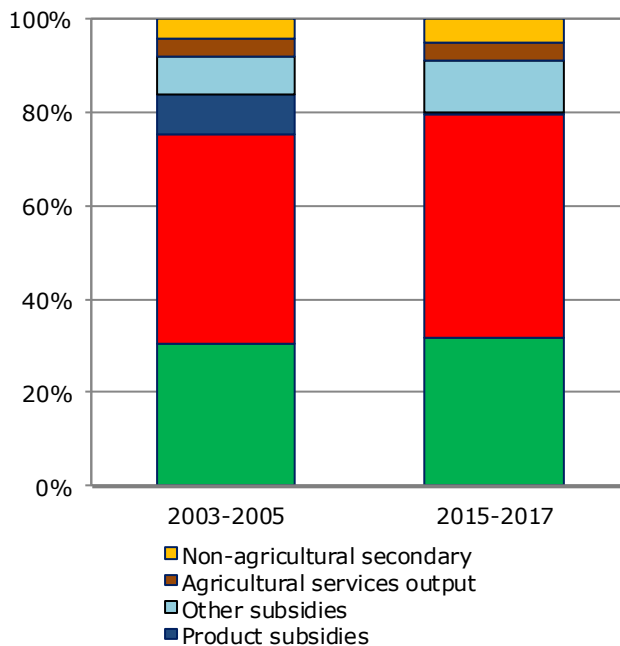
Agricultural income (real prices)



Cost Structure



Revenue Structure



United Kingdom

5.1. AGRICULTURAL TRADE

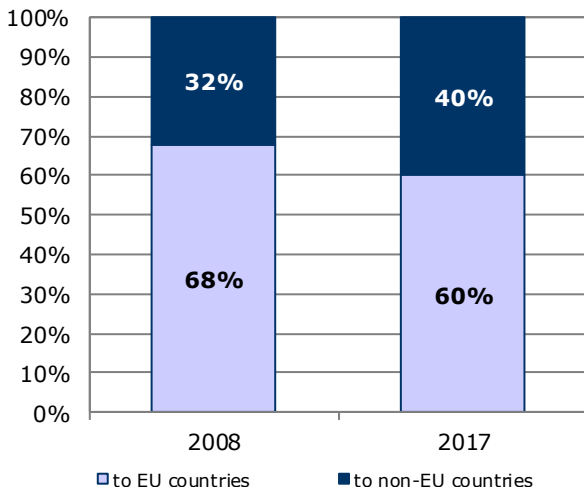
Agricultural trade in 2017

By category of product	Total trade	Trade with EU countries		Trade with non-EU countries	
	Million EUR	Million EUR	% change 2017/2016	Million EUR	% change 2017/2016
Exports					
Commodities	2476.3	1791.3	-11.0%	685.0	-21.75%
Other primary products	3963.6	3071.0	10.4%	892.6	-0.81%
Processed products	2734.5	1828.4	11.6%	906.2	5.37%
Food preparations	6674.5	4376.6	2.7%	2297.9	12.01%
Beverages	7559.0	2844.4	0.5%	4714.5	-1.21%
Non edible	2004.6	1344.4	5.4%	649.9	17.16%
Total agricultural products	25412.5	15256.2	3.1%	10146.1	1.32%
as % of total exports	6.5%	8.1%	-	5.0%	-
Imports					
Commodities	7747.1	3932.9	13.9%	3810.2	7.9%
Other primary products	15149.4	9976.3	0.6%	5172.9	-0.9%
Processed products	12761.2	10173.6	5.0%	2586.6	-2.4%
Food preparations	10539.4	9223.2	-0.9%	1240.9	1.5%
Beverages	2497.5	1977.3	-8.7%	520.3	16.3%
Non edible	5414.3	4326.7	9.3%	912.6	-0.5%
Total agricultural products	54108.9	39609.9	2.9%	14243.5	1.80%
as % of total imports	9.5%	13.5%	-	5.2%	-
Balance					
Commodities	-5270.9	-2141.6	-	-3125.3	-
Other primary products	-11185.7	-6905.3	-	-4280.2	-
Processed products	-10026.7	-8345.2	-	-1680.4	-
Food preparations	-3864.9	-4846.5	-	1056.9	-
Beverages	5061.4	867.2	-	4194.3	-
Non edible	-3409.7	-2982.3	-	-262.7	-
Total agricultural products	-28696.4	-24353.7	-	-4097.5	-

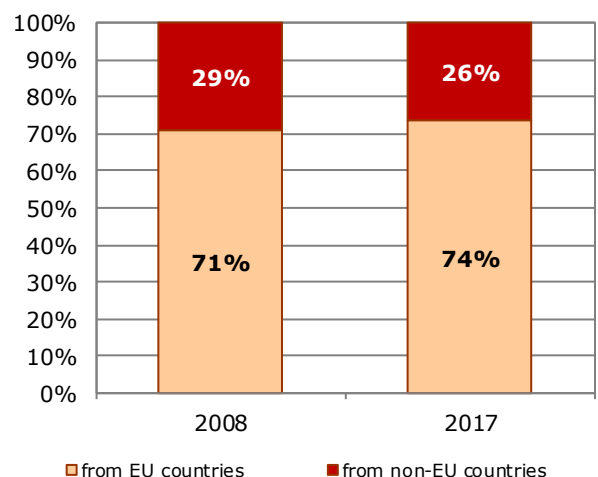
Source: Directorate General for Agriculture and Rural Development, based on COMEXT data

Updated: May 2018

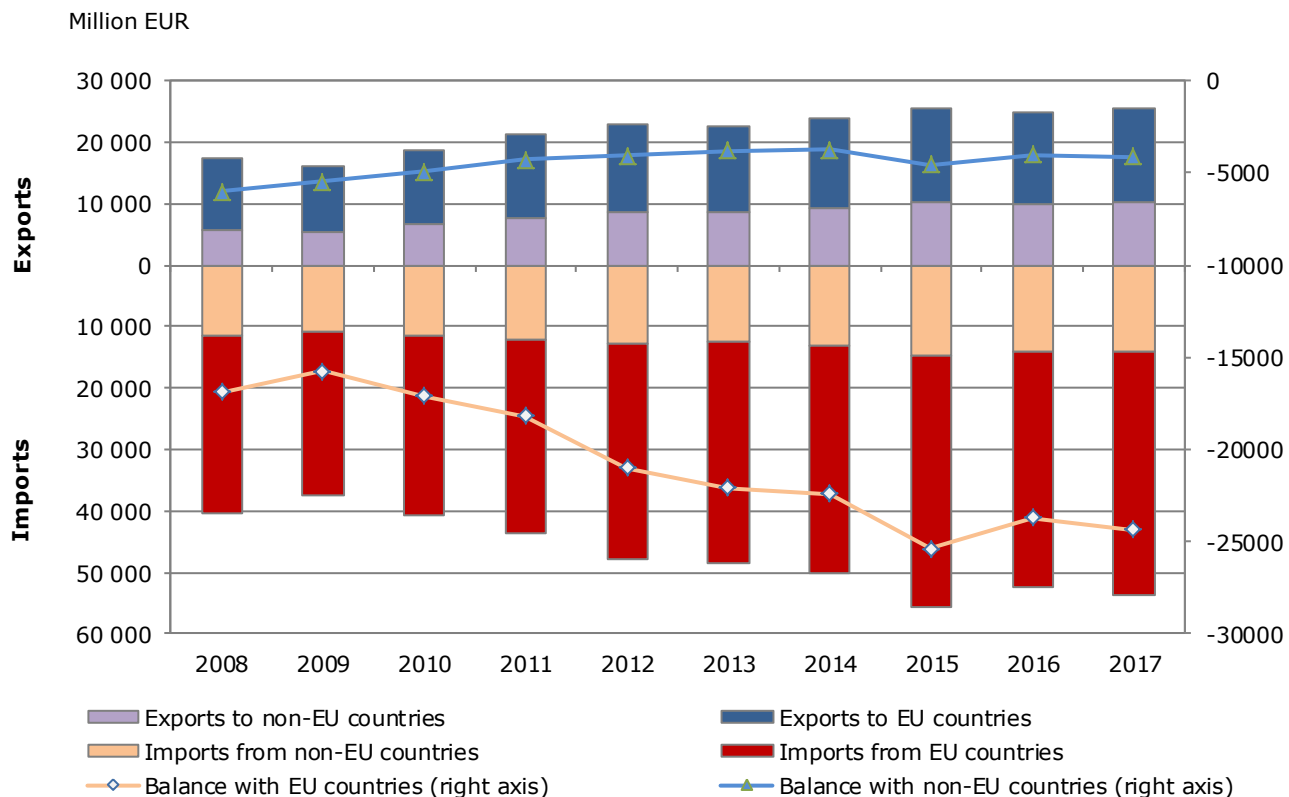
Exports of agricultural products



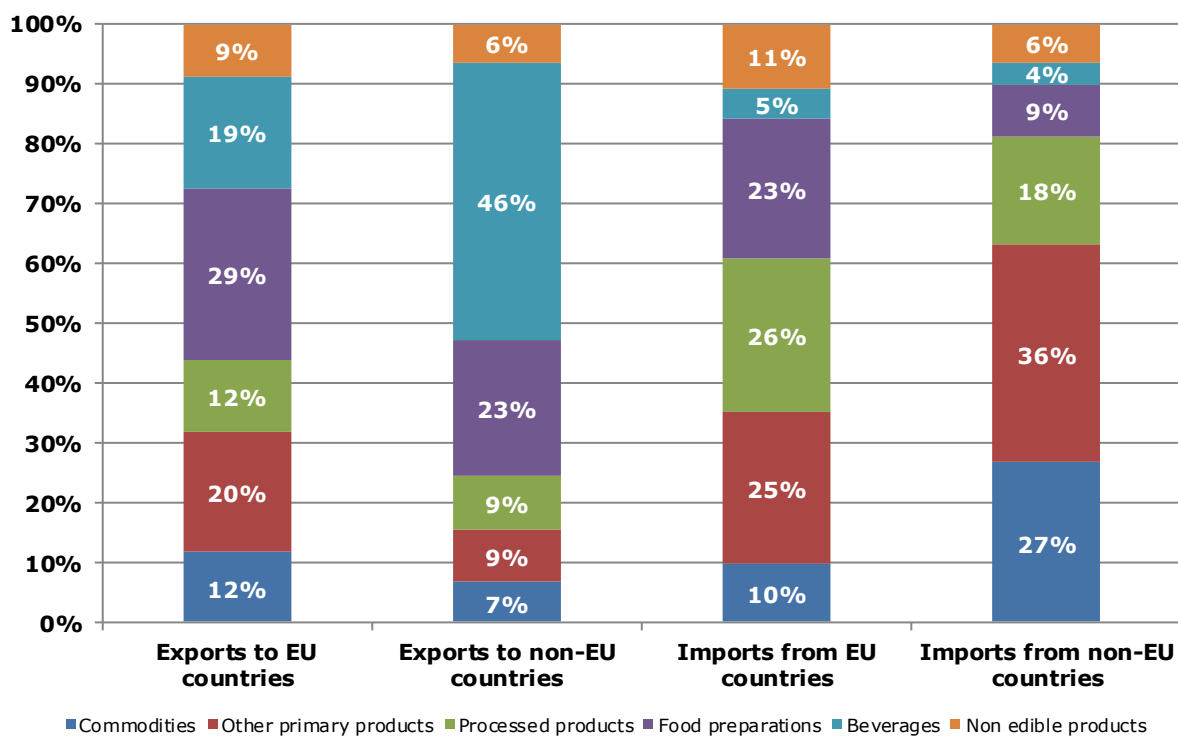
Imports of agricultural products



Evolution of agricultural trade with EU and non-EU countries



Structure of agricultural exports and imports



6.1. FARM STRUCTURE

Structure of agricultural holdings

Holdings		2005		2013	
		Total	%	Total	%
By UAA (*)	< 5 ha	106 900	37.3%	12 570	6.9%
	5-10 ha	28 070	9.8%	26 990	14.7%
	10-20 ha	30 600	10.7%	28 810	15.7%
	20-30 ha	19 660	6.9%	17 810	9.7%
	30-50 ha	27 020	9.4%	23 420	12.8%
	50-100 ha	35 670	12.4%	32 470	17.7%
	> 100 ha	38 810	13.5%	40 980	22.4%
By economic size (**)	< 4 000 €	99 160	34.6%	28 900	15.8%
	< 8 000 €	30 410	10.6%	19 730	10.8%
	< 15 000 €	31 030	10.8%	21 660	11.8%
	< 25 000 €	23 750	8.3%	18 560	10.1%
	< 50 000 €	28 140	9.8%	23 560	12.9%
	< 100 000 €	28 240	9.8%	22 530	12.3%
	< 250 000 €	29 790	10.4%	25 550	14.0%
	=/ > 500 000 €	5 080	1.8%	8 800	4.8%
By LSU (***)	0	103 700	36.2%	44 050	24.0%
	0-5	43 120	15.0%	21 350	11.6%
	5-10	18 960	6.6%	15 330	8.3%
	10-15	12 400	4.3%	10 740	5.8%
	15-20	9 360	3.3%	8 360	4.6%
	20-50	32 240	11.2%	27 380	14.9%
	50-100	25 380	8.9%	19 700	10.7%
	100-500	38 520	13.4%	33 100	18.0%
	> 500	3 070	1.1%	3 680	2.0%
By age of holder	< 35 years	12 620	4.4%	7 140	3.9%
	35-44 years	45 670	15.9%	20 320	11.1%
	45-54 years	70 340	24.5%	48 720	26.6%
	55-64 years	80 060	27.9%	51 070	27.9%
	> 64 years	78 060	27.2%	55 790	30.5%
Total	286 750	100	183 040	100	
UAA in 1 000 ha	15 957		17 327		
UAA (ha) per holding	55.6		94.7		

Source: Eurostat, Farm Structure Survey

Updated: January 2017

(*) UAA = Utilised agricultural area.

(**) Economic size: The standard output of an agricultural product (crop or livestock), abbreviated as SO, is the average monetary value of the agricultural output at farm-gate price, in euro per hectare or per head of livestock. There is a regional SO coefficient for each product, as an average value over a reference period (5 years, except for the SO 2004 coefficient calculated using the average of 3 years). The sum of all the SO per hectare of crop and per head of livestock in a farm is a measure of its overall [economic size](#), expressed in euro.

(***) LSU = Livestock units. A LSU is equivalent to a dairy cow. The number of animals (heads) is converted into LSU using a set of coefficients reflecting the feed requirements of the different animal categories.

Structure of farm labour force

2013			
Family labour force		Non family labour force	
persons:	321 110		
of which women:	31.1%		
AWUs (*):	182 250	AWUs:	92 280
Holders	Family members	Regular non family labour force	Non regular non family labour force
persons:	persons:	persons:	
173 970	147 150	110 140	
of which women:	of which women:	of which women:	
14.5%	50.7%	29.6%	
AWUs:	AWUs:	AWUs:	AWUs:
110 090	72 160	73 600	18 680
Total farm labour force (persons)		431 260	
Total farm labour force (AWUs)		274 530	

Source: Eurostat, Farm Structure Survey

Updated: January 2017

* AWUs = Annual work units. An AWU is equivalent to a worker employed on a full time basis for one year.

This document does not necessarily represent the official views of the European Commission
© European Union, 2018 - Reproduction authorised provided the source is acknowledged

Contact: DG Agriculture and Rural Development, Farm Economics Unit

Tel: +32-2-29 75471 / E-mail: Agri-C3@ec.europa.eu