



European  
Commission

May 2018

## Statistical Factsheet

# Romania



### CONTENTS

Main figures	1
1. KEY DATA	2
2. POPULATION & ECONOMY	3
3. FINANCIAL ASPECTS	4-5
4. ECONOMIC ACCOUNTS	6-12
5. AGRICULTURAL TRADE	13-14
6. FARM STRUCTURE	15-16

Main figures - Year 2017		
Population (1 <sup>st</sup> January)	19 644 350	persons
Area*	238 391	km <sup>2</sup>
Currency	RON	leu
Nominal GDP at current prices	179 967	million EUR
GDP per capita at current prices	9 232	EUR
GDP per capita at purchasing power	18 439	PPS
Harmonised index of consumer prices	1.0%	change over previous year
Unemployment rate	5.3	% of labour force
Exports (goods & services)**	308 899	million EUR
Imports (goods & services)**	342 268	million EUR
Balance (goods & services)***	-4 113	million EUR
Exports of agricultural products	6 443	million EUR
Imports of agricultural products	7 363	million EUR
Current account balance	-2.8	% of GDP
General government balance	-3.0	% of GDP
General government gross debt	37.9	% of GDP

Sources: European Commission, Eurostat, and Directorate General for Economic and Financial Affairs.

Updated: May 2018

\* Data refer to the year 2015

\*\* 2010 prices

\*\*\* current prices

# Romania

## 1. KEY DATA

Macroeconomics				
<b>Population</b> (new European Commission methodology)				
Total population (number of persons), of which:	2016	19 760 314	3.9%	of EU-28
in predominantly rural regions (PR)	2016	53.8%	19.2%	in EU-28
in intermediate regions	2016	33.1%	36.0%	in EU-28
in predominantly urban regions	2016	13.1%	44.8%	in EU-28
Population in PR regions (number of persons)	2016	10 625 451	10.9%	of EU-28
<b>GDP</b>				
In EUR (current prices):				
Million EUR	2017	179 967	1.0%	of EU-28
GDP per capita	2017	9 232	29 833	in EU-28
GDP per capita (PPS)	2017	18 439	29 833	in EU-28
Real GDP growth rate (% change over previous year)	2017	5.7%	2.3%	in EU-28
<b>Gross value added</b>				
Agriculture, forestry and fishing (% of total GVA)	2017	4.8%	1.6%	in EU-28
Financial aspects				
<b>Agricultural expenditure</b>				
Total expenditure (million EUR), of which:	2017	2 920.1	0.0%	of EU-28
Direct payments (%)	2017	57.9%	70.6%	in EU-28
Market measures (%)	2017	1.5%	5.1%	in EU-28
Rural development (%)	2017	40.6%	24.3%	in EU-28
Economic accounts of agriculture				
<b>Agricultural output</b>				
Agricultural goods output (million EUR), of which:	2017	16 062.0	4.2%	of EU-28
Crop output, of which:	2017	76.0%	5.7%	of EU-28
Cereals (including seeds)	2017	26.2%	9.2%	of EU-28
Industrial crops	2017	12.3%	9.2%	of EU-28
Forage plants	2017	8.8%	6.0%	of EU-28
Vegetables and horticultural products	2017	15.2%	4.4%	of EU-28
Potatoes	2017	5.9%	8.5%	of EU-28
Fruits	2017	5.7%	3.6%	of EU-28
Wine	2017	1.8%	1.4%	of EU-28
Olive oil	2017	0.0%	0.0%	of EU-28
Animal output, of which:	2017	24.0%	2.2%	of EU-28
Cattle	2017	1.6%	0.8%	of EU-28
Pigs	2017	5.7%	2.4%	of EU-28
Sheep and goats	2017	1.2%	3.6%	of EU-28
Poultry	2017	3.0%	2.2%	of EU-28
Milk	2017	6.4%	1.7%	of EU-28
Eggs	2017	4.0%	6.2%	of EU-28
Gross value added at basic prices (million EUR)	2017	7591.7	4.2%	of EU-28
<b>Agricultural input</b>				
Total intermediate consumption (million EUR)	2016	10 164.6	4.2%	of EU-28
<b>Agricultural income</b>				
Indicator A (% change over previous year)	2017	7.5%	8.4%	in EU-28
Farm structure				
<b>Holdings</b>				
Total (No), of which:	2013	3 629 660	33.5%	of EU-28
UAA < 5 ha (%)	2013	92.2%	66.3%	in EU-28
Economic size < 4 000 €	2013	84.6%	55.7%	in EU-28
Holder < 35 years (%)	2013	4.7%	6.0%	in EU-28
Holder > 64 years (%)	2013	41.0%	31.1%	in EU-28
UAA per holding (has)	2013	3.6	16.1	in EU-28
<b>Labour force</b>				
Persons (No), of which:	2013	6 577 930	29.6%	of EU-28
Women (%)	2013	48.1%	41.8%	in EU-28
Holders (%)	2013	54.7%	46.8%	in EU-28
Agriculture in % of total employment	2016	20.7%	4.0%	in EU-28

Sources: European Commission, Eurostat and Directorate General for Agriculture and Rural Development.

Updated: May 2018

# Romania

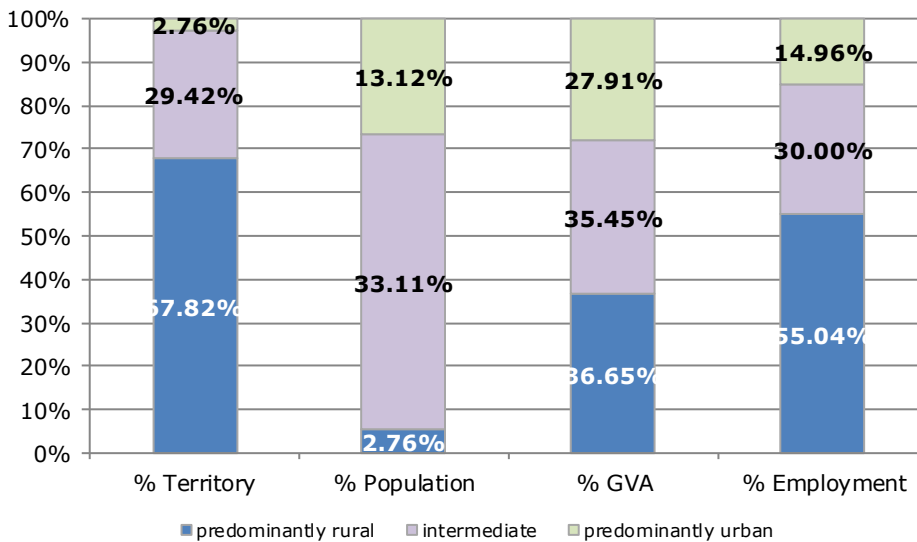
## 2. POPULATION AND ECONOMY

### Importance of rural areas

	Territory (km <sup>2</sup> )	Population (persons)	GVA (Million EUR)	Employment (persons)
Year	2015	2016	2014	2016
Predominantly Rural Regions	161 678	10 625 451	48 720	4 494 800
Intermediate Regions	70 127	6 542 703	47 130	2 449 600
Predominantly Urban Regions	6 587	2 592 160	37 100	1 221 700
<b>Total</b>	<b>238 391</b>	<b>19 760 314</b>	<b>132 950</b>	<b>8 166 100</b>

Source: Eurostat.

Updated: May 2018



### Economic forecast

Indicators	2010	2011	2012	2013	2014	2015	2016	2017	2018	2019
<b>GDP</b>										
In million EUR (current prices)	126 748	133 306	133 511	144 254	150 357	160 313	169 577	179 967	193 036	207 480
Per capita (in PPS; current prices)	13 120	13 648	14 342	14 583	15 253	16 500	17 223	18 439	19 633	20 892
<b>% change over previous period</b>										
GDP growth (at constant prices)	-0.8%	1.1%	0.6%	3.5%	3.1%	4.0%	4.6%	5.7%	4.4%	4.1%
GDP deflator	6.1%	4.1%	-0.5%	4.4%	1.1%	2.5%	1.1%	0.4%	2.7%	3.3%
Harmonised index of consumer prices	6.1%	5.8%	3.4%	3.2%	1.4%	-0.4%	-1.1%	1.0%	2.9%	3.0%
Exports (goods and services)	15.2%	11.9%	1.0%	19.7%	8.0%	4.6%	8.3%	8.3%	7.3%	6.7%
Imports (goods and services)	12.6%	10.2%	-1.8%	8.8%	8.7%	8.0%	9.8%	9.9%	8.1%	7.3%
Net exports of goods and services (million EUR)	-7 784	-7 420	-6 640	-1 119	-662	-996	-1 591	-4 113	-5 573	-6 161
<b>% of total employment</b>										
Unemployment rate	7.0	7.2	6.8	7.1	6.8	6.8	5.9	5.3	5.1	5.0
<b>% of GDP</b>										
Current account balance	-5.1	-4.9	-4.8	-1.1	-0.7	-1.2	-2.1	-2.8	-2.8	-2.6
General government balance	-6.9	-5.4	-3.7	-2.1	-1.4	-0.8	-3.0	-3.0	-3.9	-4.1
General government gross debt	29.9	34.2	37.3	37.8	39.4	37.9	37.6	37.9	39.1	40.5

Source: European Commission, Eurostat and Directorate General for Economic and Financial Affairs

Updated: May 2018

Data for 2018 and 2019 is a forecast

## 3.1. AGRICULTURE: FINANCIAL ASPECTS

### CAP expenditure

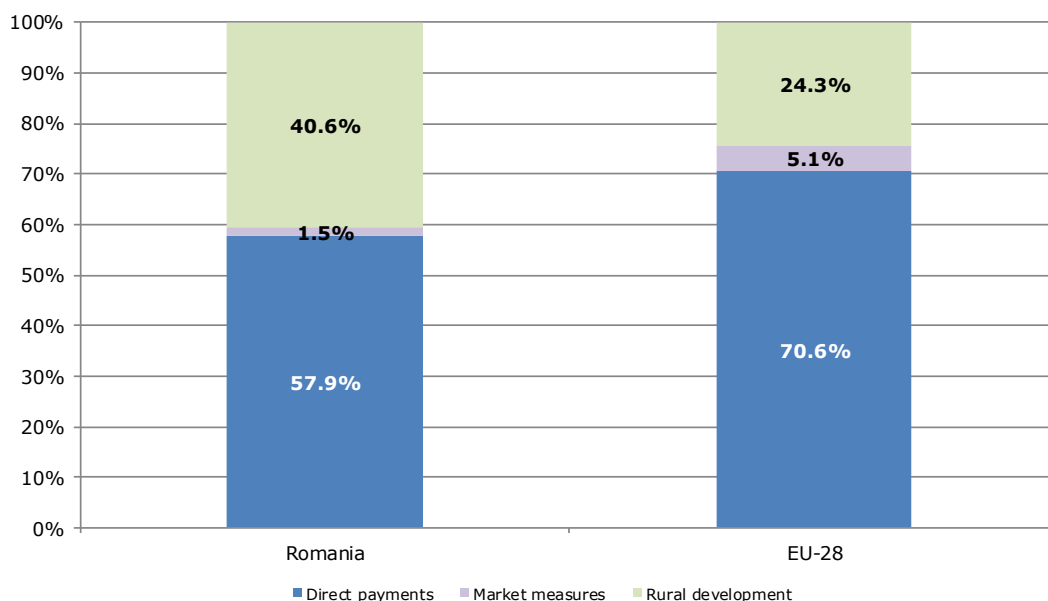
Measures	2017	
	1 000 EUR	%
Decoupled direct aids	1 242 633	42.6%
Other direct aids	448 026	15.3%
Additional amounts of aid	0	0.0%
Reimbursement of direct aids in relation to financial discipline	0	0.0%
<b>Direct payments</b>	<b>1 690 659</b>	<b>57.9%</b>
Olive oil	0	0.0%
Textile plants	0	0.0%
Fruit and vegetables	6 521	0.2%
Wine sector	11 534	0.4%
Promotion	266	0.0%
Other plant products/measures	0	0.0%
Milk and milk products	15 592	0.5%
Beef and veal	0	0.0%
Sheepmeat and goatmeat	0	0.0%
Pigmeat, eggs, poultry and other	8 990	0.3%
School schemes*	0	0.0%
<b>Market measures</b>	<b>42 904</b>	<b>1.5%</b>
<b>Rural development</b>	<b>1 186 544</b>	<b>40.6%</b>
<b>TOTAL</b>	<b>2 920 107</b>	<b>100.0%</b>

Note: Expenditure in commitments for direct payments and market measures; ceilings of support for rural development.

\* Programme implementation based on school years; reimbursement possible in the next financial year

Source: European Commission, Directorate General for Agriculture and Rural Development

### Distribution of CAP expenditure



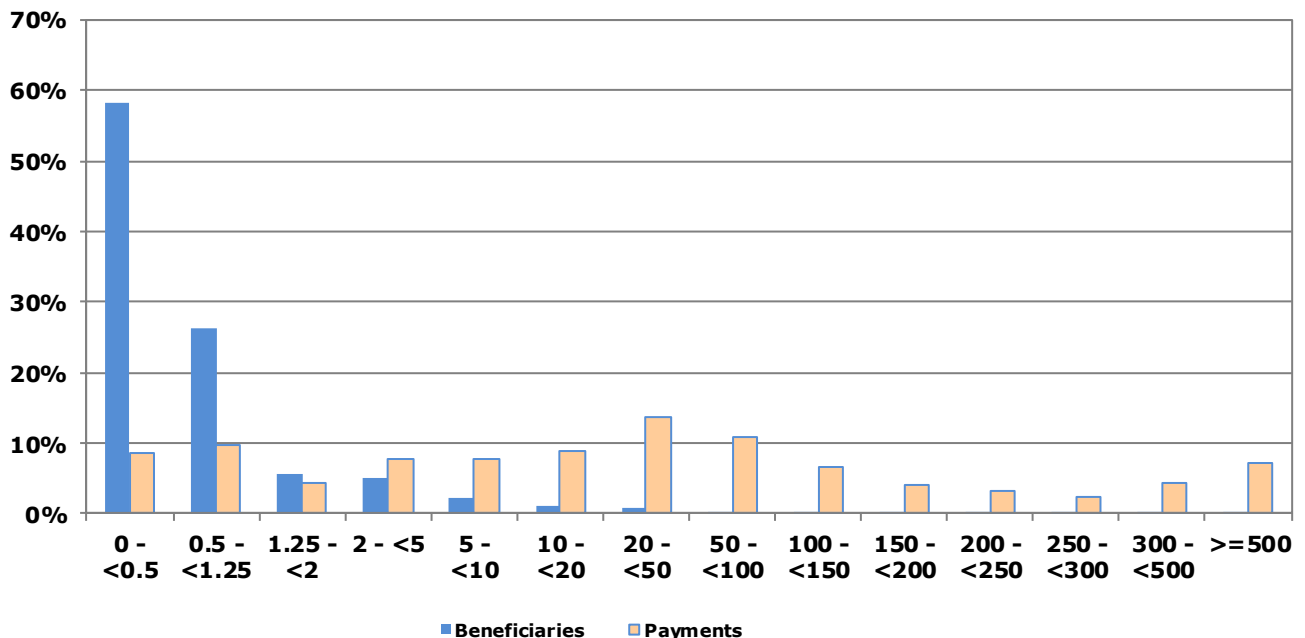
### Distribution of direct aids to the producers

Size-class of aid (all direct payments)	Financial year 2017			
	Beneficiaries		Payments in EUR	
	x 1 000	% of total	x 1 000	% of total
< 0 €	0.19	0.02%	- 103	0.0%
≥ 0 and < 500 €	491.25	58.17%	145 350	8.6%
≥ 500 and < 1 250 €	221.09	26.18%	165 703	9.8%
≥ 1 250 and < 2 000 €	48.03	5.69%	75 468	4.5%
≥ 2 000 and < 5 000 €	42.40	5.02%	129 824	7.7%
≥ 5 000 and < 10 000 €	18.72	2.22%	132 252	7.8%
≥ 10 000 and < 20 000 €	10.59	1.25%	149 796	8.9%
≥ 20 000 and < 50 000 €	7.50	0.89%	231 789	13.7%
≥ 50 000 and < 100 000 €	2.66	0.32%	184 714	10.9%
≥ 100 000 and < 150 000 €	0.93	0.11%	112 952	6.7%
≥ 150 000 and < 200 000 €	0.41	0.05%	69 771	4.1%
≥ 200 000 and < 250 000 €	0.26	0.03%	56 666	3.4%
≥ 250 000 and < 300 000 €	0.14	0.02%	38 546	2.3%
≥ 300 000 and < 500 000 €	0.20	0.02%	74 668	4.4%
≥ 500 000 €	0.12	0.01%	122 942	7.3%
<b>Total</b>	<b>844.48</b>	<b>100%</b>	<b>1 690 338</b>	<b>100%</b>

Source: European Commission, Directorate General for Agriculture and Rural Development.

Note: In order to protect the anonymity of the beneficiaries, numbers less than 10 have been made invisible in this table.

### Indicative figures on the distribution of direct aid by size-class of aid (1 000 EUR)



## 4.1. AGRICULTURE: ECONOMIC ACCOUNTS

### Agricultural output

Output components (constant prices)	2015	2016	2017		
	Million EUR		Million EUR	% of total	% of EU-28
<b>Cereals:</b>	<b>2981</b>	<b>3068</b>	<b>3667</b>	<b>26.2%</b>	<b>8.7%</b>
Wheat and spelt	1 195	1 059	1 254	9.0%	5.9%
Rye and meslin	4	3	4	0.0%	0.5%
Barley	284	287	317	2.3%	4.1%
Oats and summer cereal mixtures	63	65	63	0.4%	4.9%
Grain maize	1395	1614	1980	14.1%	22.1%
Rice	10	9	8	0.1%	1.3%
Other cereals	31	31	41	0.3%	2.6%
<b>Industrial crops:</b>	<b>1 001</b>	<b>1 191</b>	<b>1 721</b>	<b>12.3%</b>	<b>8.7%</b>
Oil seeds and oleaginous fruits	895	1085	1486	10.6%	13.2%
Protein crops	30	42	168	1.2%	13.3%
Raw tobacco	1	2	1	0.0%	0.2%
Sugar beet	34	26	32	0.2%	0.9%
Other industrial crops	41	37	34	0.2%	1.0%
<b>Forage plants</b>	<b>1147</b>	<b>1108</b>	<b>1230</b>	<b>8.8%</b>	<b>5.6%</b>
<b>Vegetables and horticultural products</b>	<b>1 911</b>	<b>1 768</b>	<b>2 127</b>	<b>15.2%</b>	<b>4.1%</b>
Potatoes	<b>632</b>	<b>720</b>	<b>830</b>	<b>5.9%</b>	<b>8.0%</b>
Fruits	<b>911</b>	<b>876</b>	<b>805</b>	<b>5.7%</b>	<b>3.3%</b>
Wine	<b>213</b>	<b>199</b>	<b>251</b>	<b>1.8%</b>	<b>1.3%</b>
Olive oil	<b>0</b>	<b>0</b>	<b>0</b>	<b>0.0%</b>	<b>0.0%</b>
Other crop products	<b>16</b>	<b>16</b>	<b>20</b>	<b>0.1%</b>	<b>0.7%</b>
<b>Crop output</b>	<b>8 811</b>	<b>8 947</b>	<b>10 651</b>	<b>76.0%</b>	<b>5.4%</b>
<b>Animals:</b>	<b>1 704</b>	<b>1 608</b>	<b>1 624</b>	<b>11.6%</b>	<b>1.7%</b>
Cattle	298	292	225	1.6%	0.7%
Pigs	747	705	804	5.7%	2.3%
Equines	17	14	13	0.1%	1.3%
Sheep and goats	193	170	166	1.2%	3.4%
Poultry	450	426	416	3.0%	2.1%
Other animals	1	0	0	0.0%	0.0%
<b>Animal products:</b>	<b>1 910</b>	<b>1 755</b>	<b>1 738</b>	<b>12.4%</b>	<b>2.6%</b>
Milk	941	887	897	6.4%	1.6%
Eggs	660	597	559	4.0%	5.8%
Other animal products	309	272	282	2.0%	11.1%
<b>Animal output</b>	<b>3 614</b>	<b>3 363</b>	<b>3 362</b>	<b>24.0%</b>	<b>2.1%</b>
<b>Agricultural goods output</b>	<b>12 425</b>	<b>12 310</b>	<b>14 013</b>	<b>100.0%</b>	<b>3.9%</b>

Source: Eurostat, Economic Accounts for Agriculture (values at real producer prices).

Updated: May 2018

## 4.2. AGRICULTURE: ECONOMIC ACCOUNTS

### Agricultural input

Input components	2015	2016	2017	2016/2015	2017/2016
	Million EUR			% Change	
Seeds and planting stock	636	697	837	9.6%	20.0%
Energy	1 613	1 671	1 797	3.6%	7.6%
Fertilisers and soil improvers	535	582	942	8.7%	61.8%
Plant protection products	229	271	287	18.0%	5.9%
Veterinary expenses	296	250	210	-15.4%	-16.0%
Feedingstuffs	2 270	2 208	2 075	-2.7%	-6.0%
Maintenance of materials	408	429	501	5.0%	16.8%
Maintenance of buildings	100	108	116	7.9%	7.3%
Agricultural services	174	178	214	2.6%	20.2%
Other goods and services	1 768	1 499	1 862	-15.2%	24.2%
<b>Total intermediate consumption</b>	<b>8 058</b>	<b>7 921</b>	<b>8 868</b>	<b>-1.7%</b>	<b>12.0%</b>
<b>Fixed capital consumption</b>	<b>2 202</b>	<b>2 060</b>	<b>2 250</b>	<b>-6.4%</b>	<b>9.2%</b>

Note: 2017 data are estimates and may still change

Source: Eurostat, Economic Accounts for Agriculture: values at real basic prices (2010 = 100)

Updated: May 2018

### Agricultural income

Values at basic prices	2015	2016	2017	2016/2015	2017/2016
	Million EUR			% Change	
<b>Output of the agricultural "industry":</b>	<b>13 902</b>	<b>13 741</b>	<b>15 491</b>	<b>-1.2%</b>	<b>12.7%</b>
Crop output	8 811	8 947	10 651	1.5%	19.0%
Animal output:	3 614	3 363	3 362	-6.9%	0.0%
<i>Animals</i>	1 704	1 608	1 624	-5.7%	1.0%
<i>Animal products</i>	1 910	1 755	1 738	-8.1%	-1.0%
Agricultural services	174	178	214	2.6%	20.2%
Secondary activities	1 303	1 252	1 264	-3.9%	0.9%
<b>- Intermediate consumption</b>	<b>8 058</b>	<b>7 921</b>	<b>8 868</b>	<b>-1.7%</b>	<b>12.0%</b>
<b>= Gross value added at basic prices</b>	<b>5 844</b>	<b>5 820</b>	<b>6 623</b>	<b>-0.4%</b>	<b>13.8%</b>
- Consumption of fixed capital	2 202	2 060	2 250	-6.4%	9.2%
- Taxes	20	20	19	-2.0%	-1.9%
+ Subsidies	1 417	2 338	2 217	65.0%	-5.2%
<b>= Factor income</b>	<b>5 040</b>	<b>6 079</b>	<b>6 571</b>	<b>20.6%</b>	<b>8.1%</b>
<b>Agricultural income* (2010=100)</b>	<b>121.6</b>	<b>119.1</b>	<b>128.0</b>	<b>-2.1%</b>	<b>7.5%</b>

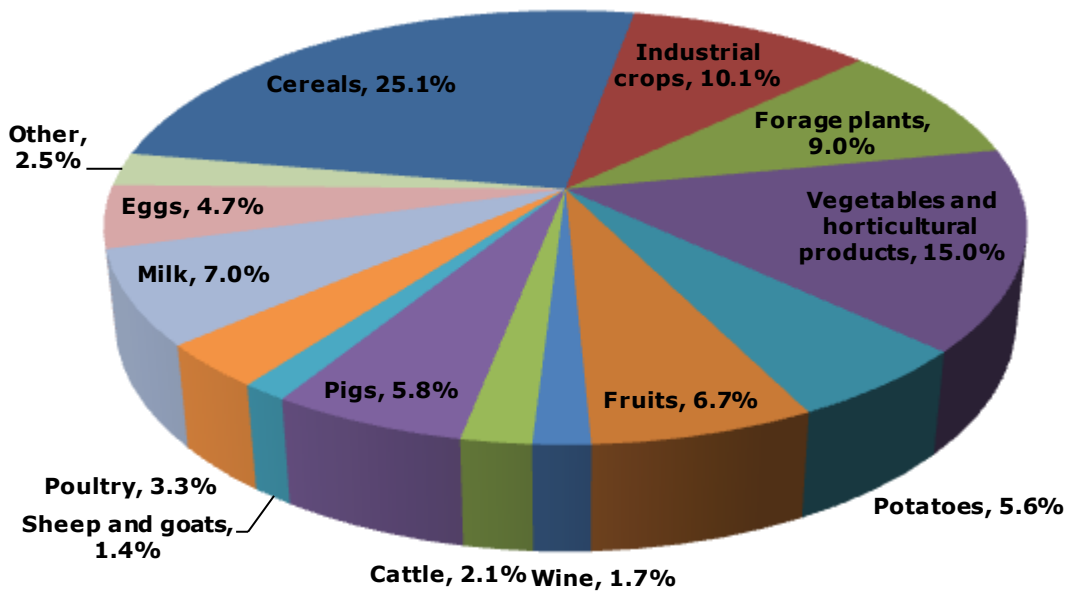
Note: 2017 data are estimates and may still change

Source: Eurostat, Economic Accounts for Agriculture (values at real prices; constant prices for \*Indicator A - see definition at the end of this document).

Updated: May 2018

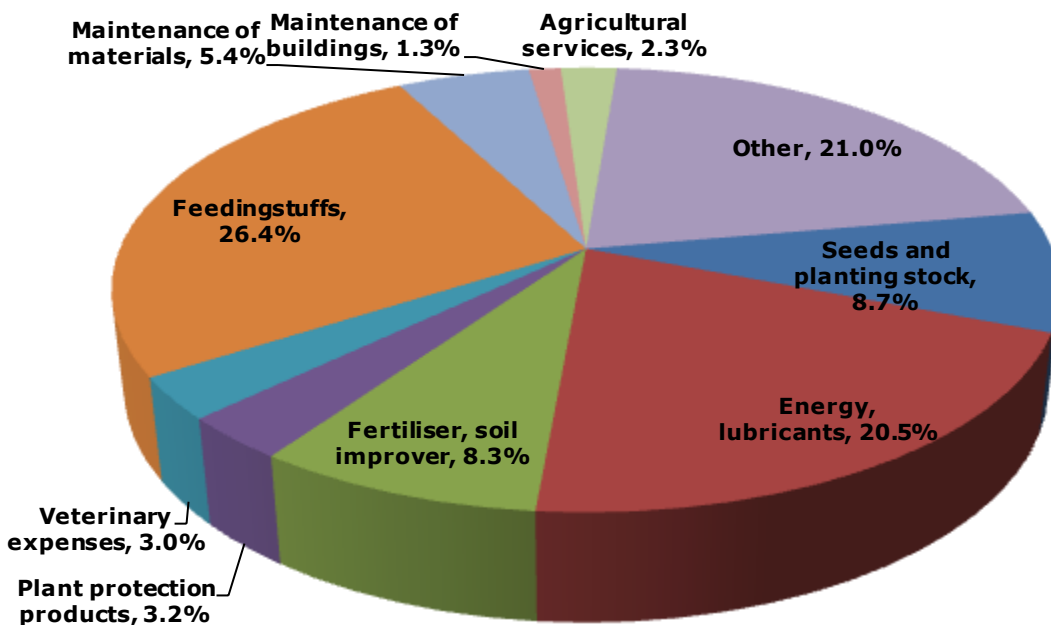
## 4.3. AGRICULTURE: ECONOMIC ACCOUNTS

### Output components (2015-2017 average)



Source: Eurostat, Economic Accounts for Agriculture (values at real producer prices)  
Updated: May 2018

### Intermediate consumption (2015-2017 average)

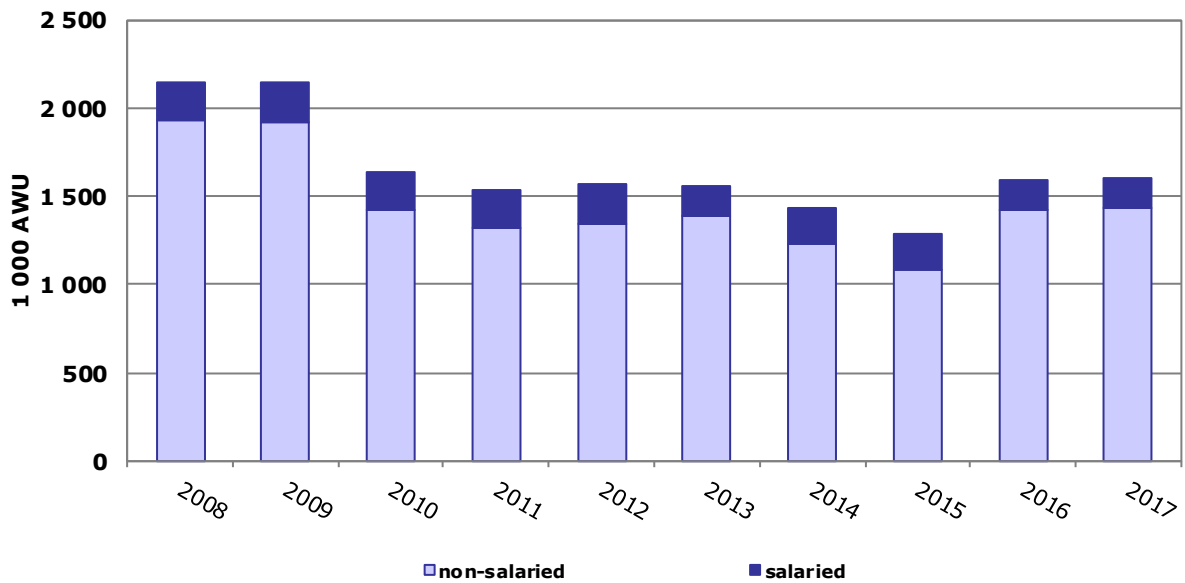


Source: Eurostat, Economic Accounts for Agriculture (values at real basic price)  
Updated: May 2018



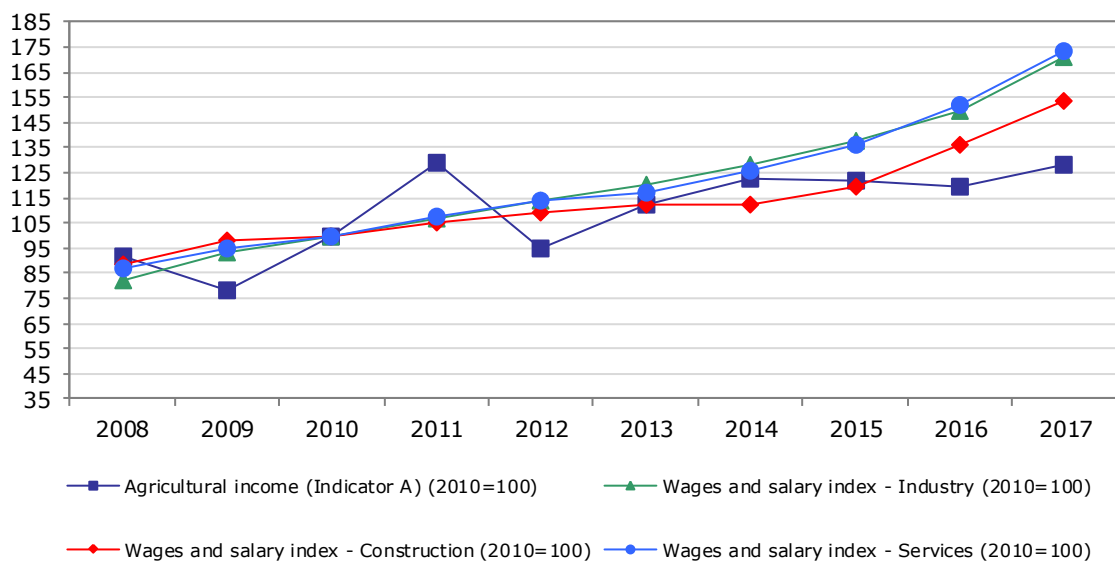
## 4.4. AGRICULTURE: ECONOMIC ACCOUNTS

### Evolution of agricultural labour input



Source: Eurostat Updated: May 2018

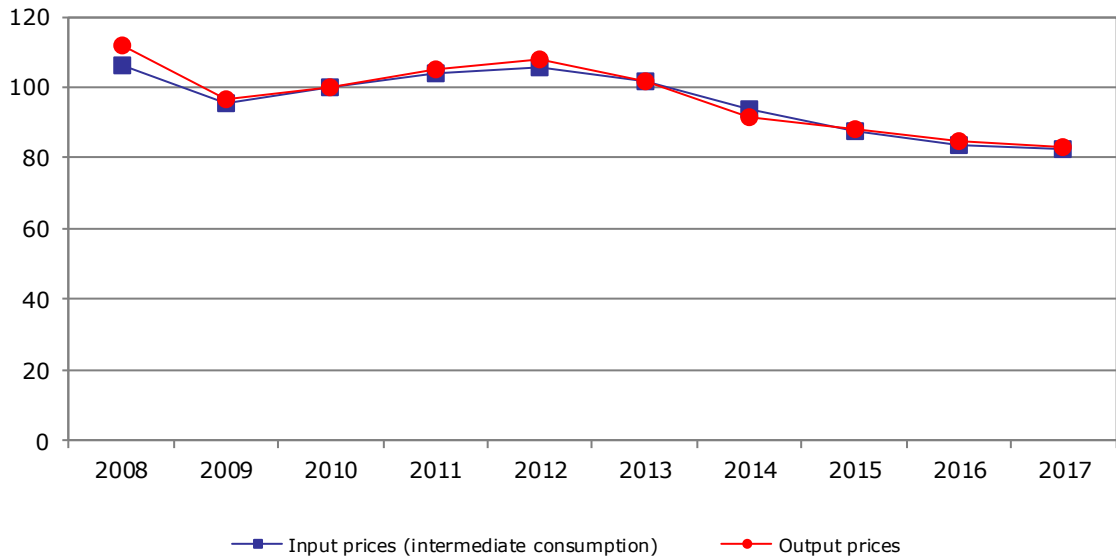
### Evolution of agricultural income (\*) compared to wages and salaries in other sectors of the economy



Source: Eurostat Updated: May 2018

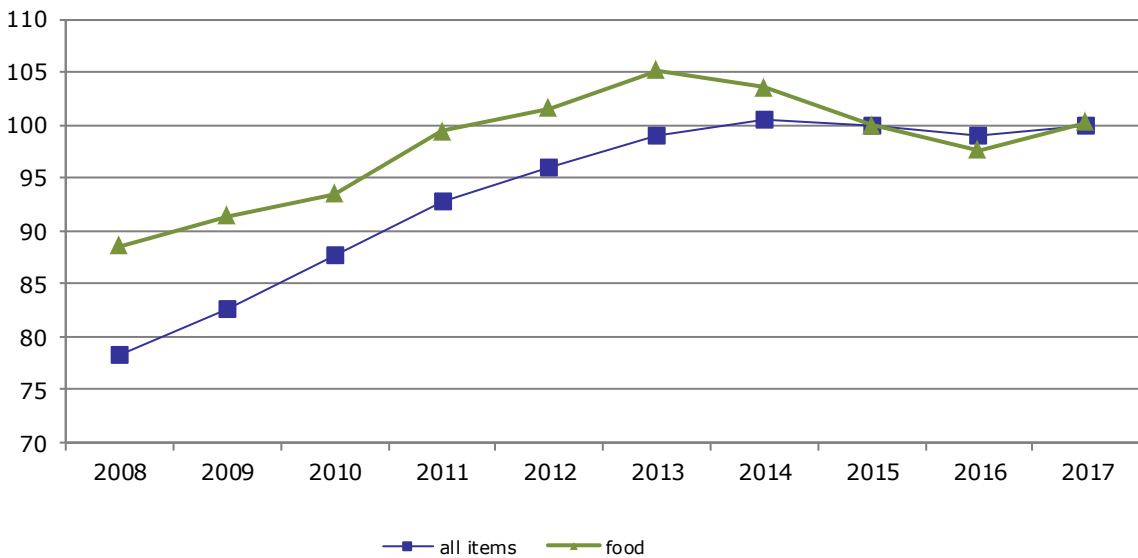
(\*) The so-called indicator A is the real net value added at factor cost of agriculture per annual work unit (AWU). The net value added at factor cost (factor income) is calculated by subtracting the consumption of fixed capital from gross value added at basic prices and adding the value of subsidies less taxes. The AWU is defined as the work volume corresponding to one full-time employed worked.

### Evolution of agricultural input and output prices



Source: Eurostat Updated: May 2018

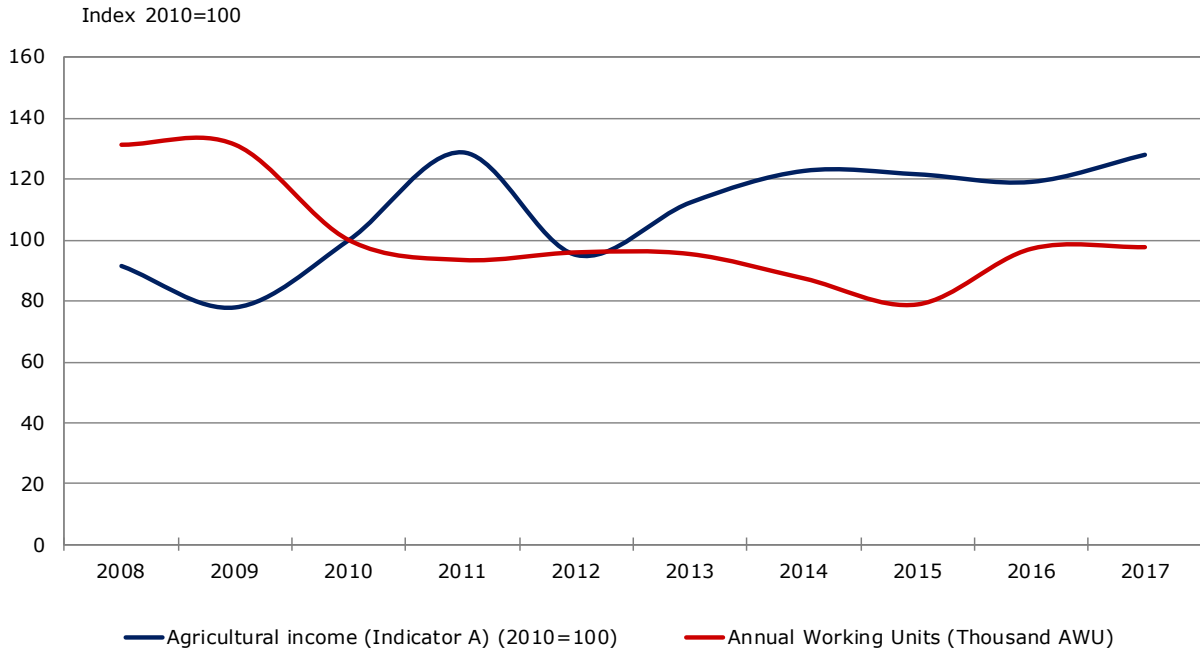
### Evolution of harmonised indices of consumer prices



Source: Eurostat Updated: May 2018

## 4.6. AGRICULTURE: ECONOMIC ACCOUNTS

### Farmers' income and labour development index (real terms)



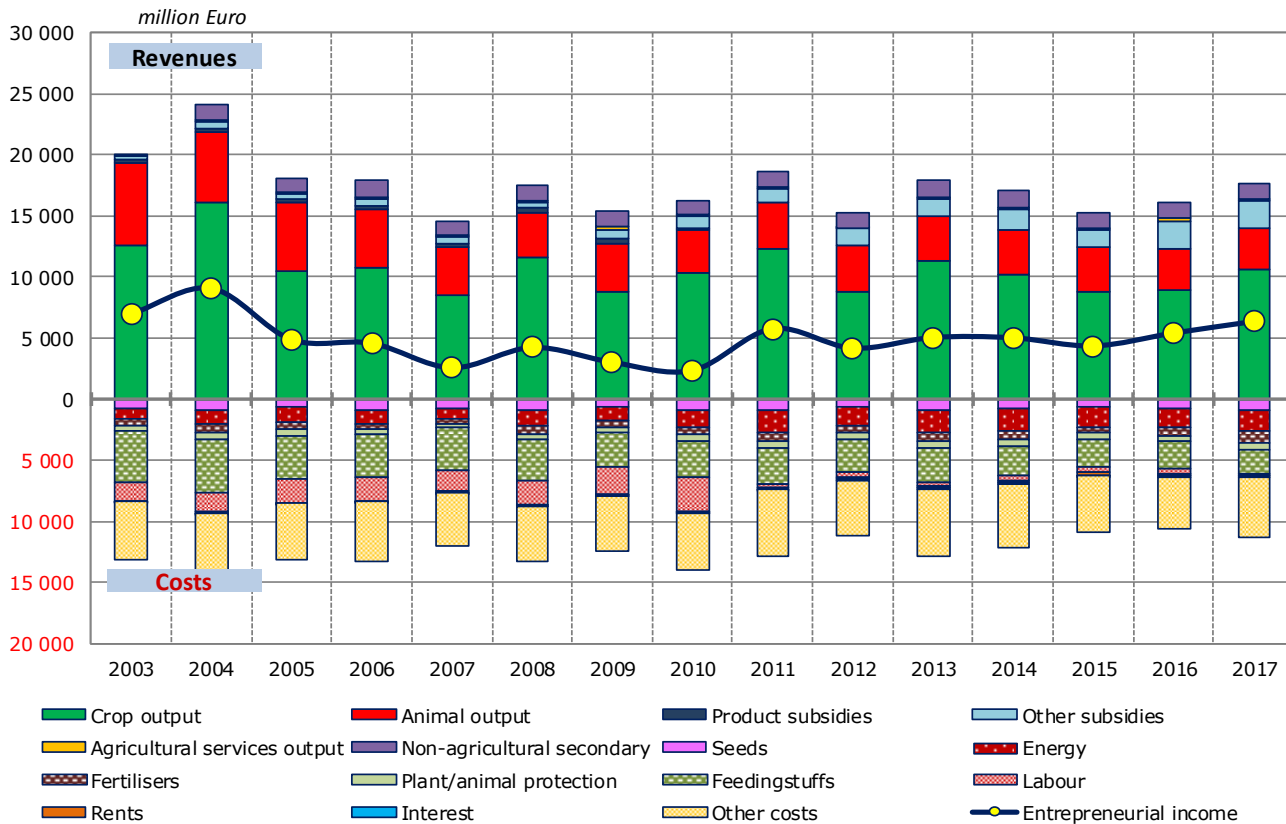
Source: Eurostat and DG Agriculture and Rural Development

Updated: May 2018

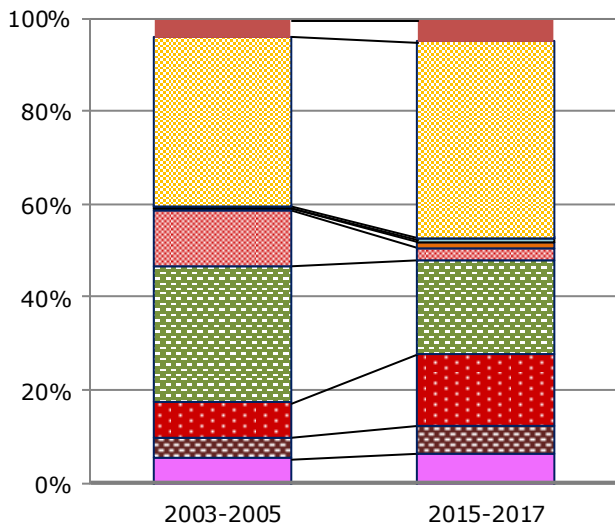
(\*) The so-called indicator A is the real net value added at factor cost of agriculture per annual work unit (AWU). The net value added at factor cost (factor income) is calculated by subtracting the consumption of fixed capital from gross value added at basic prices and adding the value of subsidies less taxes. The AWU is defined as the work volume corresponding to one full-time employed worked.

## 4.7. AGRICULTURE: ECONOMIC ACCOUNTS

### Agricultural income (real prices)

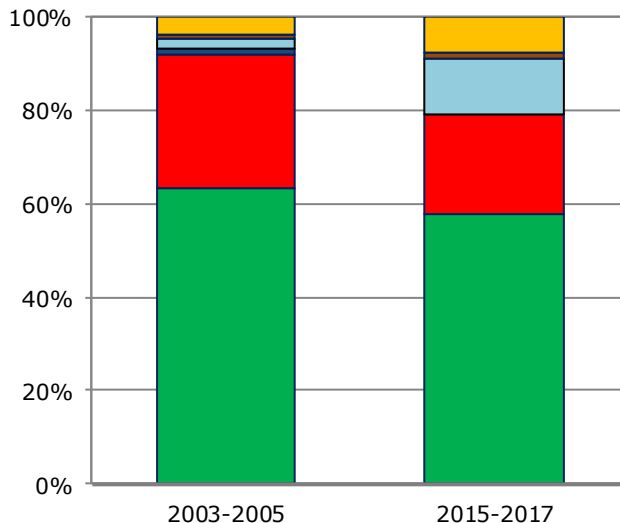


#### Cost Structure



- Plant/animal protection
- Other costs
- Taxes
- Interest
- Rents
- Labour
- Feedingstuffs
- Energy
- Fertilisers
- Seeds

#### Revenue Structure



- Non-agricultural secondary
- Agricultural services output
- Other subsidies
- Product subsidies

## 5.1. AGRICULTURAL TRADE

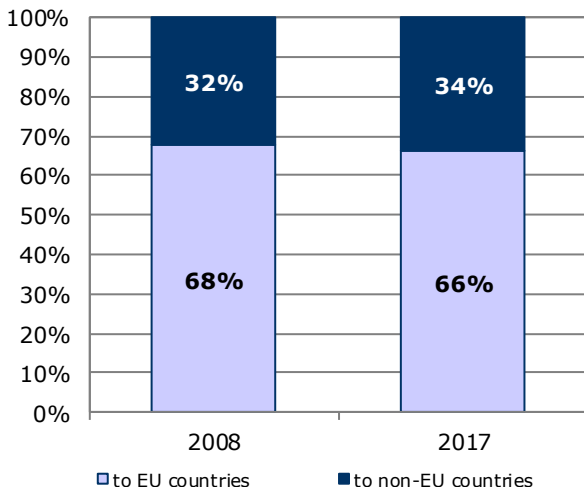
### Agricultural trade in 2017

By category of product	Total trade	Trade with EU countries		Trade with non-EU countries	
	Million EUR	Million EUR	% change 2017/2016	Million EUR	% change 2017/2016
<b>Exports</b>					
Commodities	3639.1	2085.3	17.5%	1553.7	-16.60%
Other primary products	1046.6	663.4	18.0%	383.2	26.24%
Processed products	281.7	257.1	14.4%	24.6	6.98%
Food preparations	468.0	366.4	11.1%	101.7	11.11%
Beverages	97.2	68.7	26.1%	28.4	2.49%
Non edible	910.4	824.9	-8.4%	85.5	99.54%
<b>Total agricultural products</b>	<b>6443.0</b>	<b>4265.9</b>	<b>10.9%</b>	<b>2177.1</b>	<b>-7.43%</b>
as % of total exports	10.3%	9.0%	-	14.4%	-
<b>Imports</b>					
Commodities	1618.1	1081.8	-10.6%	536.2	13.8%
Other primary products	2219.3	1952.1	14.8%	267.1	15.5%
Processed products	883.3	826.7	13.1%	56.6	-3.5%
Food preparations	1442.6	1293.7	10.5%	148.8	9.1%
Beverages	323.2	296.6	37.3%	26.7	9.6%
Non edible	876.8	682.8	15.0%	194.0	-4.9%
<b>Total agricultural products</b>	<b>7363.3</b>	<b>6133.7</b>	<b>9.1%</b>	<b>1229.4</b>	<b>9.20%</b>
as % of total imports	9.7%	10.7%	-	6.7%	-
<b>Balance</b>					
Commodities	2021.0	1003.5	-	1017.5	-
Other primary products	-1172.7	-1288.6	-	116.1	-
Processed products	-601.6	-569.6	-	-32.0	-
Food preparations	-974.5	-927.3	-	-47.1	-
Beverages	-226.1	-227.8	-	1.8	-
Non edible	33.5	142.0	-	-108.5	-
<b>Total agricultural products</b>	<b>-920.4</b>	<b>-1867.8</b>	<b>-</b>	<b>947.7</b>	<b>-</b>

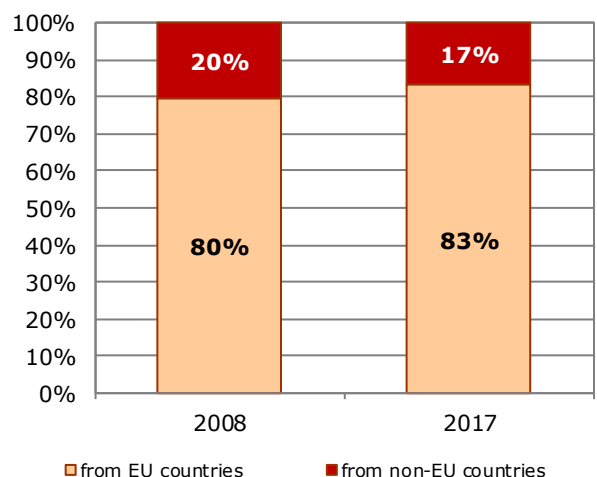
Source: Directorate General for Agriculture and Rural Development, based on COMEXT data

Updated: May 2018

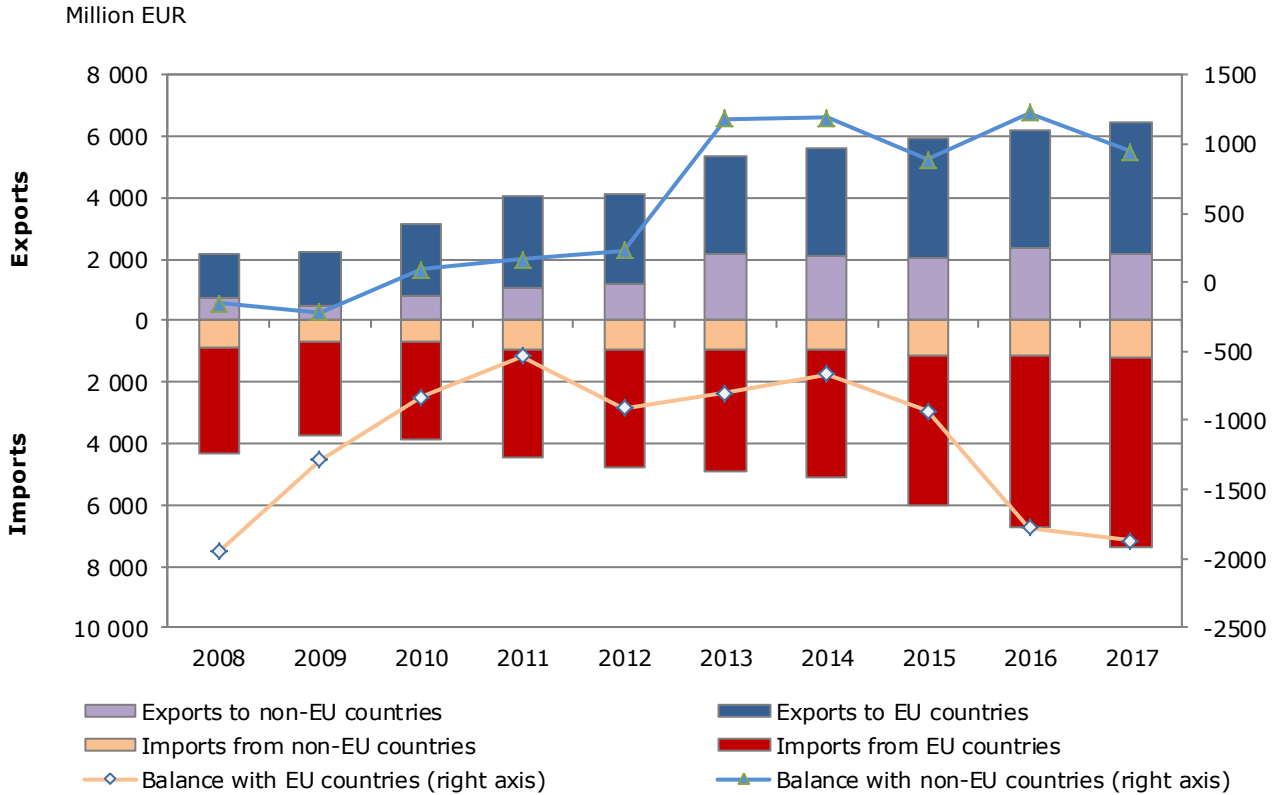
#### Exports of agricultural products



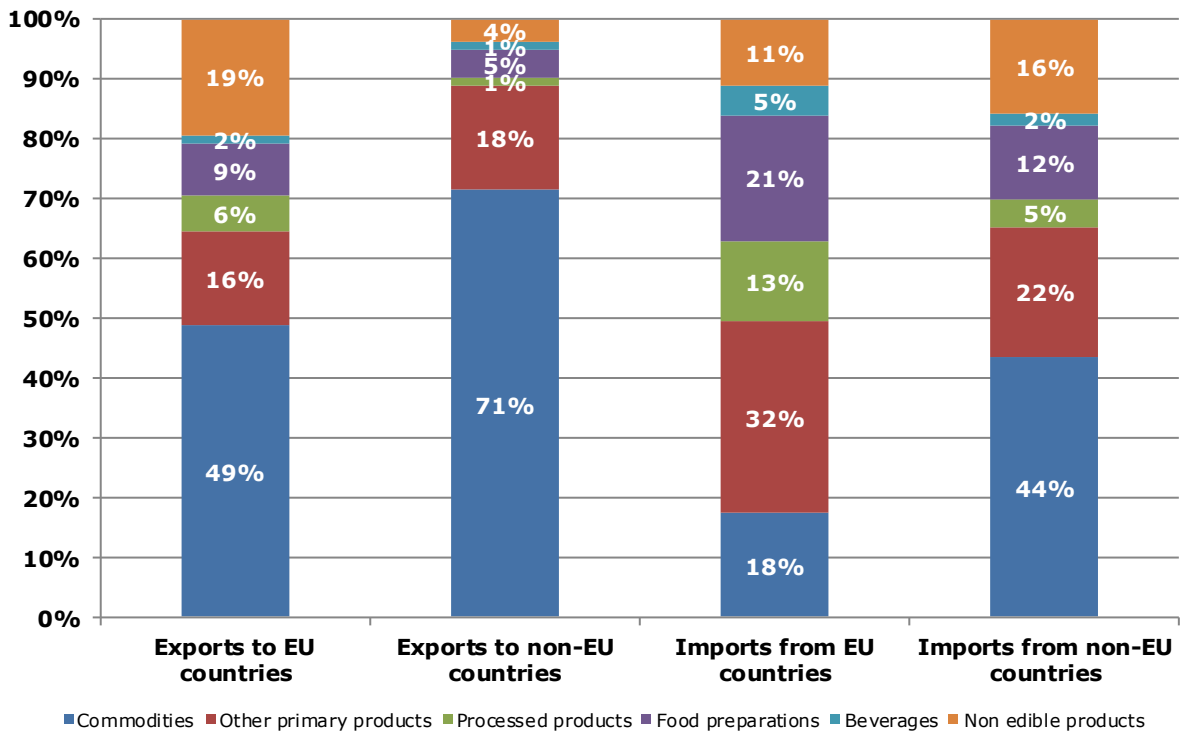
#### Imports of agricultural products



### Evolution of agricultural trade with EU and non-EU countries



### Structure of agricultural exports and imports



## 6.1. FARM STRUCTURE

### Structure of agricultural holdings

Holdings		2005		2013	
		Total	%	Total	%
By UAA (*)	< 5 ha	3 870 730	90.9%	3 347 070	92.2%
	5-10 ha	289 580	6.8%	193 870	5.3%
	10-20 ha	65 910	1.5%	49 650	1.4%
	20-30 ha	10 130	0.2%	10 260	0.3%
	30-50 ha	5 990	0.1%	8 470	0.2%
	50-100 ha	4 900	0.1%	7 260	0.2%
	> 100 ha	8 930	0.2%	13 080	0.4%
By economic size (**)	< 4 000 €	3 702 250	87.0%	3 071 070	84.6%
	< 8 000 €	435 640	10.2%	375 280	10.3%
	< 15 000 €	82 240	1.9%	114 280	3.1%
	< 25 000 €	17 560	0.4%	33 830	0.9%
	< 50 000 €	9 520	0.2%	18 820	0.5%
	< 100 000 €	4 200	0.1%	7 830	0.2%
	< 250 000 €	2 900	0.1%	5 000	0.1%
	=/> 500 000 €	740	0.0%	1 470	0.0%
By LSU (***)	0	812 210	19.1%	912 270	25.1%
	0-5	3 256 870	76.5%	2 584 810	71.2%
	5-10	140 000	3.3%	79 560	2.2%
	10-15	22 610	0.5%	20 450	0.6%
	15-20	8 900	0.2%	10 130	0.3%
	20-50	12 380	0.3%	17 210	0.5%
	50-100	2 260	0.1%	3 690	0.1%
	100-500	760	0.0%	1 270	0.0%
> 500	170	0.0%	280	0.0%	
By age of holder	< 35 years	226 230	5.3%	171 960	4.7%
	35-44 years	513 710	12.1%	504 810	13.9%
	45-54 years	756 300	17.8%	614 550	16.9%
	55-64 years	946 830	22.2%	851 230	23.5%
	> 64 years	1 813 090	42.6%	1 487 110	41.0%
<b>Total</b>	<b>4 256 150</b>	<b>100</b>	<b>3 629 660</b>	<b>100</b>	
UAA in 1 000 ha	13 907		13 056		
UAA (ha) per holding	3.3		3.6		

Source: Eurostat, Farm Structure Survey

Updated: January 2017

(\*) UAA = Utilised agricultural area.

(\*\*) Economic size: The standard output of an agricultural product (crop or livestock), abbreviated as SO, is the average monetary value of the agricultural output at farm-gate price, in euro per hectare or per head of livestock. There is a regional SO coefficient for each product, as an average value over a reference period (5 years, except for the SO 2004 coefficient calculated using the average of 3 years). The sum of all the SO per hectare of crop and per head of livestock in a farm is a measure of its overall [economic size](#), expressed in euro.

(\*\*\*) LSU = Livestock units. A LSU is equivalent to a dairy cow. The number of animals (heads) is converted into LSU using a set of coefficients reflecting the feed requirements of the different animal categories.

## 6.2. FARM STRUCTURE

### Structure of farm labour force

2013			
Family labour force		Non family labour force	
persons:	6 488 130		
of which women:	48.5%		
AWUs (*):	1 386 370	AWUs:	166 260
Holders	Family members	Regular non family labour force	Non regular non family labour force
persons:	persons:	persons:	
3 597 280	2 890 850	89 800	
of which women:	of which women:	of which women:	
33.3%	67.4%	22.2%	
AWUs:	AWUs:	AWUs:	AWUs:
782 770	603 610	65 490	100 770
<b>Total farm labour force (persons)</b>		6 577 930	
<b>Total farm labour force (AWUs)</b>		1 552 640	

Source: Eurostat, Farm Structure Survey

Updated: January 2017

\* AWUs = Annual work units. An AWU is equivalent to a worker employed on a full time basis for one year.

This document does not necessarily represent the official views of the European Commission  
© European Union, 2018 - Reproduction authorised provided the source is acknowledged

Contact: DG Agriculture and Rural Development, Farm Economics Unit

Tel: +32-2-29 75471 / E-mail: [Agri-C3@ec.europa.eu](mailto:Agri-C3@ec.europa.eu)