

4.15.0.1 Cattle numbers (December of previous year)

13/09/2012

	1 000 head				% of EU-27	% TAV
	2008	2009	2010	2011	2011	<u>2011</u> <u>2010</u>
1	2	3	4	5	6	7
EU-27	89 236	88 683	86 636	86 231	100.0	-0.5
Belgique/België	2 538	2 535	2 510	2 472	2.9	-1.5
Bulgaria	574	548	531	567	0.7	6.8
Česká republika	1 358	1 356	1 319	1 340	1.6	1.5
Danmark	1 599	1 621	1 630	1 612	1.9	-1.1
Deutschland	12 988	12 897	12 706	12 528	14.5	-1.4
Eesti	238	235	236	239	0.3	1.3
Éire/Ireland	6 304	6 232	5 918	5 925	6.9	0.1
Elláda	682	675	679	627	0.7	-7.7
España	6 020	6 082	6 075	5 923	6.9	-2.5
France	19 366	19 199	18 992	19 142	22.2	0.8
Italia	6 486	6 447	5 833	5 898	6.8	1.1
Kýpros	56	54	55	57	0.1	4.0
Latvija	380	378	380	381	0.4	0.3
Lietuva	771	759	748	752	0.9	0.6
Luxembourg	196	195	194	188	0.2	-3.0
Magyarország	701	700	681	701	0.8	2.9
Malta	18	16	15	15	0.0	0.7
Nederland	3 996	3 998	3 960	3 912	4.5	-1.2
Österreich	1 997	2 026	2 013	1 977	2.3	-1.8
Polska	5 564	5 590	5 562	5 501	6.4	-1.1
Portugal	1 439	1 391	1 375	1 519	1.8	10.5
România	2 684	2 512	2 009	2 002	2.3	-0.3
Slovenija	470	473	470	462	0.5	-1.7
Slovensko	488	472	467	463	0.5	-0.8
Suomi/Finland	907	908	909	903	1.0	-0.7
Sverige	1 505	1 482	1 475	1 450	1.7	-1.7
United Kingdom	9 911	9 901	9 896	9 675	11.2	-2.2
Hrvatska	454	447	444	:	:	-100.0
Ísland	:	:	:	:	:	:
P J R Makedonija	:	:	:	:	:	:
Montenegro	:	:	:	:	:	:
Srbija	:	:	:	:	:	:
Türkiye	:	:	:	:	:	:

Source: European Commission (Eurostat and Agriculture and Rural Development DG)

4.15.1.1 Slaughterings of adult bovine animals, calves and young cattle⁽¹⁾

		1 000 head				% TAV	Average carcass weight in kg				% TAV
		2008	2009	2010	2011	<u>2011</u> 2010	2008	2009	2010	2011	<u>2011</u> 2010
1	2	3	4	5	6	7	8	9	10	11	12
Adult bovine animals	EU-27	18 782	17 057	17 096	16 924	-1.0	7 934	8 158	8 243	8 252	0.1
	Belgique/België	492	452	475	514	8.1	432.1	437.4	428.2	419.2	-2.1
	Bulgaria	43	13	15	15	2.3	160.3	230.9	220.8	227.3	2.9
	Česká republika	241	232	220	214	-2.7	306.0	300.6	306.0	305.8	-0.1
	Danmark	440	299	320	324	1.2	261.2	286.0	286.5	278.8	-2.7
	Deutschland	3 055	2 941	2 891	2 793	-3.4	337.7	337.9	342.5	343.4	0.2
	Eesti	52	34	32	28	-13.5	244.1	247.0	248.6	246.2	-1.0
	Éire/Ireland	1 178	1 118	1 194	1 149	-3.7	340.5	339.5	344.4	351.2	2.0
	Elláda	163	212	190	184	-3.1	257.6	235.7	256.5	258.9	0.9
	España	1 542	1 142	992	971	-2.1	287.6	290.0	299.7	298.8	-0.3
	France	3 029	2 955	3 050	3 148	3.2	374.1	369.7	373.0	371.8	-0.3
	Italia	2 349	2 292	2 268	2 106	-7.1	330.4	327.0	330.0	333.0	0.9
	Kýpros	16	8	8	10	17.4	228.1	312.3	329.8	350.8	6.4
	Latvija	80	70	66	61	-8.8	218.1	223.2	219.8	221.4	0.7
	Lietuva	158	142	141	138	-2.2	240.6	251.4	253.4	252.5	-0.3
	Luxembourg	22	20	20	18	-12.9	374.5	376.3	381.4	386.0	1.2
	Magyarország	108	93	87	85	-3.1	266.1	271.4	268.5	269.5	0.4
	Malta	5	5	5	4	-17.9	276.0	266.5	265.5	271.0	2.1
	Nederland	461	570	526	517	-1.7	306.4	307.7	310.7	309.4	-0.4
	Österreich	519	525	523	514	-1.8	358.4	356.3	356.9	357.2	0.1
	Polska	1 114	1 130	1 118	1 134	1.4	280.1	283.4	292.6	285.1	-2.6
	Portugal	248	229	211	215	1.7	299.1	286.4	284.4	283.5	-0.3
	România	886	85	89	79	-11.6	179.3	230.4	235.6	240.9	2.2
	Slovenija	93	88	88	88	-0.3	336.9	336.9	341.4	338.1	-1.0
	Slovensko	67	53	45	38	-16.6	270.2	273.7	275.5	272.3	-1.2
	Suomi/Finland	233	229	226	228	1.1	311.9	314.4	321.9	320.6	-0.4
	Sverige	358	377	371	381	2.6	314.5	319.2	319.0	314.6	-1.4
	United Kingdom	1 829	1 743	1 924	1 971	2.5	342.3	346.3	350.0	345.5	-1.3
Calves and Young Cattle	EU-27	5 804	6 166	6 402	6 512	1.7	139.0	151.2	155.4	:	-100.0
	Belgique/België	310	328	347	330	-4.8	163.6	160.1	160.6	160.1	-0.4
	Bulgaria	80	4	4	6	43.0	113.7	143.4	159.5	153.7	-3.7
	Česká republika	9	12	11	10	-4.7	61.5	91.0	82.0	78.1	-4.7
	Danmark	11	137	132	145	10.2	142.9	207.7	209.2	212.0	1.3
	Deutschland	316	332	345	375	8.6	126.8	138.8	139.2	144.0	3.5
	Eesti	7	3	3	2	-25.8	51.8	95.1	92.3	92.5	0.2
	Éire/Ireland	1	3	6	8	0.0	109.5	178.8	146.0	160.7	0.0
	Elláda	96	47	57	68	18.0	155.2	152.2	164.5	172.8	5.1
	España	185	638	870	994	14.3	156.8	220.7	229.9	232.2	1.0
	France	1 630	1 573	1 568	1 560	-0.5	142.4	140.5	142.6	144.9	1.6
	Italia	873	924	932	869	-6.7	145.5	147.7	148.2	148.2	0.0
	Kýpros	0	7	6	4	:	:	212.9	205.9	213.4	x
	Latvija	23	14	14	12	-13.1	75.4	95.2	85.7	87.4	2.0
	Lietuva	27	10	10	9	-14.9	40.0	49.8	56.4	54.6	-3.2
	Luxembourg	2	1	1	1	-0.6	156.6	157.7	164.3	163.6	-0.4
	Magyarország	2	7	6	4	-39.0	75.5	162.2	122.7	111.2	-9.4
	Malta	0	0	0	0	-83.5	65.2	45.9	69.1	64.5	-6.7
	Nederland	1 419	1 484	1 490	1 499	0.6	157.2	150.3	149.1	145.9	-2.2
	Österreich	81	80	77	73	-5.3	98.1	100.2	100.2	99.2	-1.0
	Polska	350	246	209	192	-8.5	59.5	62.4	53.0	49.7	-6.2
	Portugal	143	152	131	145	10.1	146.6	152.5	154.3	158.6	2.8
	România	130	22	25	36	40.2	124.3	151.0	171.8	176.4	2.6
	Slovenija	25	25	24	23	-4.5	89.3	94.4	98.8	100.2	1.4
	Slovensko	4	1	1	1	-6.8	63.6	65.8	86.2	75.0	-12.9
	Suomi/Finland	7	3	3	3	-2.7	95.3	138.8	138.2	130.2	-5.8
	Sverige	29	68	64	62	-3.0	148.9	226.3	230.1	229.7	-0.2
	United Kingdom	44	43	62	81	29.9	30.4	32.8	38.3	44.9	17.1

(1) Total slaughterings of animals of domestic and foreign origin.

Source: European Commission (Eurostat).

4.15.1.2 Net production of beef/veal in the EU (adult bovine animals, calves and young cattle) ⁽¹⁾

03/08/2012

		1 000 t. ⁽²⁾				% TAV
		2008	2009	2010	2011	<u>2011</u> 2010
1	2	3	4	5	6	7
Adult bovine animals	EU-27	6 079	5 657	5 758	5 696	-1.1
	Belgique/België	212	198	203	215	5.8
	Bulgaria	7	3	3	3	5.3
	Česká republika	74	70	67	66	-2.7
	Danmark	115	86	92	90	-1.5
	Deutschland	1 032	994	990	959	-3.1
	Eesti	13	9	8	7	-14.4
	Éire/Ireland	401	380	411	404	-1.9
	Elláda	42	50	49	48	-2.2
	España	444	331	297	290	-2.5
	France	1 133	1 092	1 138	1 170	2.9
	Italia	776	749	748	701	-6.3
	Kýpros	4	2	3	3	24.9
	Latvija	18	16	15	13	-8.1
	Lietuva	38	36	36	35	-2.5
	Luxembourg	8	7	8	7	-11.9
	Magyarország	29	25	23	23	-2.8
	Malta	1	1	1	1	-16.2
	Nederland	141	176	163	160	-2.1
	Österreich	186	187	187	184	-1.7
	Polska	312	320	327	323	-1.2
	Portugal	74	65	60	61	1.3
	România	159	20	21	19	-9.6
	Slovenija	31	30	30	30	-1.3
	Slovensko	18	15	13	10	-17.6
	Suomi/Finland	73	72	73	73	0.7
	Sverige	113	120	118	120	1.2
	United Kingdom	626	604	673	681	1.1
Calves and Young Cattle	EU-27	403	933	995	1 027	3.2
	Belgique/België	25	53	56	53	-5.1
	Bulgaria	0	1	1	1	40.4
	Česká republika	0	1	1	1	-9.2
	Danmark	1	29	28	31	11.6
	Deutschland	20	46	48	54	12.3
	Eesti	0	0	0	0	-25.6
	Éire/Ireland	0	1	1	1	38.9
	Elláda	15	7	9	12	24.0
	España	11	141	200	231	15.4
	France	129	221	224	226	1.1
	Italia	60	136	138	129	-6.8
	Kýpros	0	2	1	1	0.0
	Latvija	1	1	1	1	-11.3
	Lietuva	1	1	1	0	-17.7
	Luxembourg	0	0	0	0	-1.0
	Magyarország	0	1	1	0	-44.7
	Malta	0	0	0	0	-84.6
	Nederland	104	223	222	219	-1.6
	Österreich	4	8	8	7	x
	Polska	10	15	11	10	-14.2
	Portugal	6	23	20	23	13.2
	România	9	3	4	6	44.0
	Slovenija	1	2	2	2	-3.1
	Slovensko	0	0	0	0	-18.8
	Suomi/Finland	0	0	0	0	-8.3
	Sverige	5	15	15	14	-3.3
	United Kingdom	1	1	2	4	52.1
Beef/veal	EU-27	8 072	7 717	7 918	7 844	-0.9
	Belgique/België	267	255	263	272	3.5
	Bulgaria	15	5	5	5	9.4
	Česká republika	80	77	74	72	-2.9
	Danmark	128	126	131	133	1.4
	Deutschland	1 210	1 174	1 187	1 159	-2.3
	Eesti	15	10	9	8	-15.0
	Éire/Ireland	537	514	559	547	-2.2
	Elláda	57	57	58	59	2.1
	España	658	598	607	606	-0.2
	France	1 518	1 467	1 521	1 559	2.5
	Italia	1 059	1 055	1 075	1 009	-6.2
	Kýpros	4	4	4	5	7.5
	Latvija	21	19	18	17	-2.7
	Lietuva	48	44	43	41	-3.7
	Luxembourg	10	9	10	9	-7.0
	Magyarország	32	30	27	26	-4.1
	Malta	1	2	1	1	-21.5
	Nederland	378	402	389	382	-1.8
	Österreich	221	224	225	217	-3.4
	Polska	381	385	386	380	-1.6
	Portugal	109	103	94	96	2.5
	România	190	25	28	28	-2.8
	Slovenija	37	35	36	36	-0.6
	Slovensko	20	16	14	11	-17.1
	Suomi/Finland	83	81	82	83	0.6
	Sverige	129	150	148	148	-0.4
	United Kingdom	862	850	925	937	1.3

⁽¹⁾ Total slaughtering of animals including those of foreign origin.⁽²⁾ Carcass weight.

NB: These figures do not correspond to gross domestic production; for this see Table 4.14.1.1.

Source: European Commission (Eurostat).

4.15.2.1 World production and production of principal beef/veal producing/exporting countries ⁽¹⁾

08/02/2013

	%				1 000 t				% TAV
	2008	2009	2010	2011	2008	2009	2010	2011	<u>2011</u> <u>2010</u>
1	2	3	4	5	6	7	8	9	10
World	100.0	100.0	100.0	100.0	63 374	64 032	64 276	62 543	-2.7
- EU-27	12.7	12.1	12.3	12.5	8 072	7 717	7 917	7 844	-0.9
- USA	19.2	18.6	18.7	19.2	12 163	11 891	12 046	11 988	-0.5
- Russia	2.8	2.7	2.7	2.6	1 769	1 741	1 727	1 625	-5.9
- Brazil	14.2	14.7	14.2	14.4	9 024	9 395	9 115	9 030	-0.9
- Argentina	4.9	5.3	4.1	3.9	3 132	3 378	2 630	2 420	-8.0
- Uruguay	0.8	0.8	0.8	0.8	527	491	524	479	-8.6
- Australia	3.4	3.3	3.3	3.4	2 132	2 124	2 108	2 110	0.1
- New Zealand	1.0	1.0	1.0	1.0	635	637	635	623	-2.0
- Peop. Rep. China	9.2	9.5	9.7	9.9	5 841	6 060	6 244	6 182	-1.0
- Canada	2.0	2.0	2.0	1.8	1 288	1 252	1 272	1 154	-9.3
- Mexico	2.6	2.7	2.7	2.9	1 667	1 705	1 745	1 804	3.4
- Colombia	1.4	1.5	1.4	1.5	917	936	930	940	1.1
- India	3.5	3.5	1.7	1.7	1 037	1 056	1 076	1 087	1.0
- Japan	0.8	0.8	0.8	0.8	520	517	515	500	-2.8
- South Africa	1.2	1.2	1.3	1.3	783	771	848	829	-2.2
- Switzerland	0.2	0.2	0.2	0.2	135	142	143	144	0.7
- Norway	0.1	0.1	0.1	0.1	86	85	84	74	-12.0

⁽¹⁾ Net production.

Sources: FAO and other international organizations (GATT).

4.15.3.1 Beef/veal - EU trade by species

EU-27

13/09/2012

		A. Live animals in number (per 1 000 head)				B. Live animals converted to meat weight (per 1 000 t carcass weight)	C. Meat (1 000 t carcass weight)				
		Calves	Adult bovine animals	Pure-bred breeding animals	Total live animals		Fresh or chilled from adult bovine animals	Frozen	Salted or in brine, dried or smoked	Prepared and preserved (cooked or uncooked)	Total beef/veal (B + C)
1	2	3	4	5	6	7	8	9	10	11	12
<i>Imports</i> Extra-EU	2009	0.1	1.1	4.0	5.2	1.4	156.7	137.0	1.9	124.2	421.2
	2010	0.0	0.2	0.4	0.7	0.2	150.1	113.4	2.5	103.8	369.9
	2011	18.5	0.1	0.4	19.0	0.1	142.8	96.5	3.0	72.7	315.1
<i>Exports</i> Extra-EU	2009	255.2	67.8	80.1	403.0	60.8	58.4	29.9	1.1	27.4	177.6
	2010	280.4	220.6	116.0	617.0	115.7	128.5	122.5	2.0	22.8	391.4
	2011	403.7	239.6	158.4	801.7	155.6	207.9	119.8	1.8	25.2	510.2
Intra-EU	2009	2 364.0	1 242.1	328.7	3 934.7	214.8	2 113.8	340.3	17.2	238.0	2 924.1
	2010	2 247.9	1 361.7	255.8	3 865.4	475.7	2 112.2	372.5	18.2	259.2	3 237.8
	2011	3 005.4	1 289.0	219.2	4 513.6	507.9	2 111.9	362.5	34.9	264.7	3 281.9
Total	2009	2 619.1	1 309.9	408.8	4 337.8	275.6	2 172.2	370.2	18.3	265.4	3 101.7
	2010	2 528.3	1 582.3	371.8	4 482.4	591.4	2 240.6	495.0	20.2	282.0	3 629.2
	2011	3 409.1	1 528.6	377.6	5 315.3	663.5	2 319.8	482.3	36.7	289.9	3 792.1

NB: Coefficients for carcass weight:

- Live animals Live weight x 0,50
- Boneless meat || Product weight x 1.3
- Prepared and preserved meat

Source: European Commission (Eurostat and Agriculture and Rural Development DG)

4.15.3.2 Beef/veal - trade with non-member countries

13/09/2012
(1 000 tonnes carcass weight)

Reporting countries	2008	%	2009	%	2010	%	2011	%
1	2	3	4	5	6	7	8	9
A. Exports								
EU-27	216.7	100.0	177.6	100.0	390.9	100.0	510.2	100.0
Belgique/belgië	4.7	2.2	1.3	0.7	5.8	1.5	6.4	1.3
Bulgaria	6.5	3.0	5.8	3.3	4.6	1.2	3.3	0.6
Česká republika	2.6	1.2	2.9	1.7	5.4	1.4	4.9	1.0
Danmark	7.2	3.3	7.8	4.4	17.6	4.5	13.6	2.7
Deutschland	48.1	22.2	30.9	17.4	76.7	19.6	82.8	16.2
Eesti	0.3	0.1	0.1	0.1	0.8	0.2	1.8	0.3
Éire/Ireland	10.9	5.0	4.8	2.7	16.4	4.2	20.4	4.0
Elláda	0.2	0.1	0.4	0.2	1.2	0.3	2.3	0.5
España	6.5	3.0	4.9	2.8	21.1	5.4	23.6	4.6
France	15.2	7.0	16.3	9.2	37.5	9.6	80.9	15.8
Italia	27.5	12.7	21.4	12.1	35.7	9.1	37.6	7.4
Kýpros	0.1	0.1	0.1	0.0	0.0	0.0	0.0	0.0
Latvija	0.5	0.2	0.9	0.5	0.8	0.2	1.6	0.3
Lietuva	18.1	8.3	10.4	5.8	17.4	4.5	22.9	4.5
Luxembourg	0.0	0.0	0.0	0.0	0.0	0.0	0.0	0.0
Magyarország	5.9	2.7	7.0	3.9	17.9	4.6	26.9	5.3
Malta	0.0	0.0	0.0	0.0	0.0	0.0	0.0	0.0
Nederland	13.3	6.1	18.6	10.5	24.0	6.1	29.7	5.8
Österreich	13.0	6.0	9.7	5.4	21.3	5.4	28.4	5.6
Polska	18.7	8.6	15.3	8.6	53.9	13.8	93.6	18.3
Portugal	0.2	0.1	0.4	0.2	0.6	0.1	0.9	0.2
România	9.0	4.2	10.2	5.8	18.9	4.8	16.2	3.2
Slovenija	3.1	1.4	1.6	0.9	6.5	1.7	2.6	0.5
Slovensko	1.2	0.6	2.2	1.3	1.9	0.5	2.2	0.4
Suomi/Finland	0.3	0.1	0.3	0.2	0.2	0.1	0.5	0.1
Sverige	0.7	0.3	0.5	0.3	0.7	0.2	0.8	0.2
United Kingdom	2.8	1.3	3.8	2.1	4.1	1.0	6.4	1.2
B. Imports								
EU-27	386.2	100.0	421.1	100.0	369.9	100.0	315.1	100.0
Belgique/belgië	7.9	2.0	8.2	2.0	7.1	1.9	2.8	0.9
Bulgaria	0.7	0.2	0.0	0.0	0.0	0.0	0.0	0.0
Česká republika	0.1	0.0	0.1	0.0	0.1	0.0	0.1	0.0
Danmark	2.9	0.8	3.2	0.8	2.4	0.7	1.8	0.6
Deutschland	60.7	15.7	68.4	16.2	65.1	17.6	62.9	19.9
Eesti	0.2	0.1	0.2	0.0	0.2	0.1	0.2	0.1
Éire/Ireland	4.9	1.3	7.0	1.7	4.0	1.1	1.5	0.5
Elláda	1.9	0.5	3.8	0.9	1.6	0.4	0.6	0.2
España	25.3	6.6	26.9	6.4	22.2	6.0	20.3	6.5
France	8.7	2.3	9.2	2.2	8.2	2.2	6.7	2.1
Italia	53.6	13.9	68.8	16.3	63.8	17.3	58.6	18.6
Kýpros	1.0	0.3	1.1	0.3	1.2	0.3	0.9	0.3
Latvija	0.0	0.0	0.0	0.0	0.0	0.0	0.0	0.0
Lietuva	0.0	0.0	0.0	0.0	0.0	0.0	0.0	0.0
Luxembourg	0.7	0.2	0.4	0.1	0.4	0.1	0.6	0.2
Magyarország	0.0	0.0	0.0	0.0	0.0	0.0	0.0	0.0
Malta	1.2	0.3	1.0	0.2	0.9	0.2	0.9	0.3
Nederland	72.3	18.7	80.6	19.1	75.1	20.3	71.7	22.8
Österreich	0.1	0.0	0.1	0.0	0.1	0.0	0.2	0.1
Polska	1.5	0.4	0.1	0.0	0.0	0.0	0.0	0.0
Portugal	4.2	1.1	4.0	1.0	3.7	1.0	2.6	0.8
România	0.0	0.0	0.0	0.0	0.0	0.0	0.0	0.0
Slovenija	1.4	0.4	1.4	0.3	1.4	0.4	1.6	0.5
Slovensko	0.0	0.0	0.0	0.0	0.0	0.0	0.0	0.0
Suomi/Finland	1.0	0.3	1.3	0.3	1.1	0.3	0.7	0.2
Sverige	6.3	1.6	7.2	1.7	6.4	1.7	5.7	1.8
United Kingdom	129.3	33.5	128.1	30.4	104.9	28.3	74.5	23.6

NB: Coefficients for carcass weight:

- Live animals Live weight x 0,50
- Boneless meat
- Prepared and preserved meat || Product weight x 1.3

Source: European Commission (Eurostat and Agriculture and Rural Development DG)

4.15.4.1 Supply balance - beef/veal

13/09/2012

EU-27

	1 000 t ⁽²⁾				% TAV
	2008	2009	2010	2011	<u>2011</u> 2010
1	2	3	4	5	6
Gross internal production	8 022	7 657	7 802	7 689	-1.5
Net production	8 072	7 717	7 918	7 844	-0.9
Change in stocks	0	0	0	0	x
Imports ⁽¹⁾	391	421	370	315	-14.8
Exports ⁽¹⁾	166	178	391	510	30.4
Intra-EU trade ⁽¹⁾	2 290	2 924	3 238	3 282	1.4
Internal use (total)	8 297	7 960	7 896	7 649	-3.1
Gross consumption (kg/head/year)	16.1	15.3	15.6	15.3	-1.7
Self-sufficiency (%)	97.3	96.9	100.3	102.6	2.3

⁽¹⁾ Total trade, with the exception of live animals.

⁽²⁾ Carcass weight.

Source: European Commission (Eurostat and Agriculture and Rural Development DG)

4.15.5.1 Market prices ⁽¹⁾ for beef/veal(EUR/100 kg) ⁽²⁾ 03/11/2012

	Adult male bovines R3 ⁽⁴⁾				Heifers R3 ⁽⁴⁾				Cows O3 ⁽⁵⁾			
	2009	2010	2011	% TAV 2011 2010	2009	2010	2011	% TAV 2011 2010	2009	2010	2011	% TAV 2011 2010
1	2	3	4	5	6	7	8	9	10	11	12	13
EU-27 ⁽³⁾	307.42	317.92	352.10	10.8	312.39	316.22	350.70	10.9	226.97	231.18	268.27	16.0
Belgique/België	271.26	262.01	276.06	5.4	274.07	273.53	283.32	3.6	231.59	222.77	254.68	14.3
Bulgaria	:	220.78	281.75	x	:	221.66	281.25	x	178.95	187.61	208.14	10.9
Česká republika	280.19	292.67	322.46	10.2	230.32	237.92	261.90	10.1	196.64	203.48	227.53	11.8
Danmark	319.54	323.86	364.37	12.5	297.15	309.43	342.12	10.6	223.26	241.65	282.79	17.0
Deutschland	312.20	320.24	360.53	12.6	297.24	295.34	327.04	10.7	230.14	235.00	284.99	21.3
Eesti	274.13	259.89	268.19	3.2	237.76	249.05	247.47	-0.6	158.70	168.22	188.23	11.9
Éire/Ireland	287.05	291.12	343.39	18.0	293.13	298.99	353.21	18.1	235.45	241.96	290.65	20.1
Elláda	419.69	420.74	428.24	1.8	403.41	409.70	405.75	-1.0	189.15	194.10	197.49	1.7
España	325.58	322.57	348.92	8.2	295.93	312.47	360.72	15.4	181.80	177.85	204.88	15.2
France	312.66	311.70	337.27	8.2	321.01	324.27	341.60	5.3	253.39	262.92	290.52	10.5
Italia	359.98	345.47	371.64	7.6	398.61	380.81	396.00	4.0	218.50	217.11	262.30	20.8
Kýpros	:	:	:	:	:	:	:	:	:	:	:	:
Latvija	201.20	177.13	221.31	24.9	181.84	166.22	197.15	18.6	164.87	163.70	200.77	22.6
Lietuva	220.12	246.16	296.87	20.6	201.94	197.07	229.72	16.6	171.39	184.72	226.20	22.5
Luxembourg	313.36	313.99	339.58	8.2	325.38	325.82	340.36	4.5	250.28	252.30	290.90	15.3
Magyarország	235.87	:	:	:	207.03	217.75	251.46	15.5	195.87	194.87	240.89	23.6
Malta	279.71	289.70	278.49	-3.9	:	:	:	:	:	:	:	:
Nederland	295.02	279.22	308.18	10.4	255.25	237.16	283.76	19.6	230.63	227.92	261.20	14.6
Österreich	316.53	320.99	357.53	11.4	283.63	286.02	315.72	10.4	208.17	216.46	254.59	17.6
Polska	247.32	256.05	309.68	20.9	214.23	225.44	262.64	16.5	189.99	199.24	240.71	20.8
Portugal	344.80	341.58	348.48	2.0	:	:	:	:	186.96	176.79	185.94	5.2
România	244.47	248.57	280.61	12.9	262.53	255.70	264.16	3.3	209.84	190.68	209.45	9.8
Slovenija	300.63	298.73	336.05	12.5	266.16	272.19	305.90	12.4	169.61	166.03	209.31	26.1
Slovensko	285.16	286.18	307.09	7.3	216.98	220.34	231.42	5.0	187.23	190.16	194.04	2.0
Suomi/Finland	344.59	333.24	351.96	5.6	308.96	294.75	310.09	5.2	220.53	210.55	217.19	3.2
Sverige	254.86	306.76	349.31	13.9	257.04	307.61	349.61	13.7	205.48	251.05	289.61	15.4
United Kingdom	316.49	316.37	357.96	13.1	313.31	314.33	355.64	13.1	238.16	230.38	281.00	22.0

(1) Country Ø.

(2) Slaughter weight.

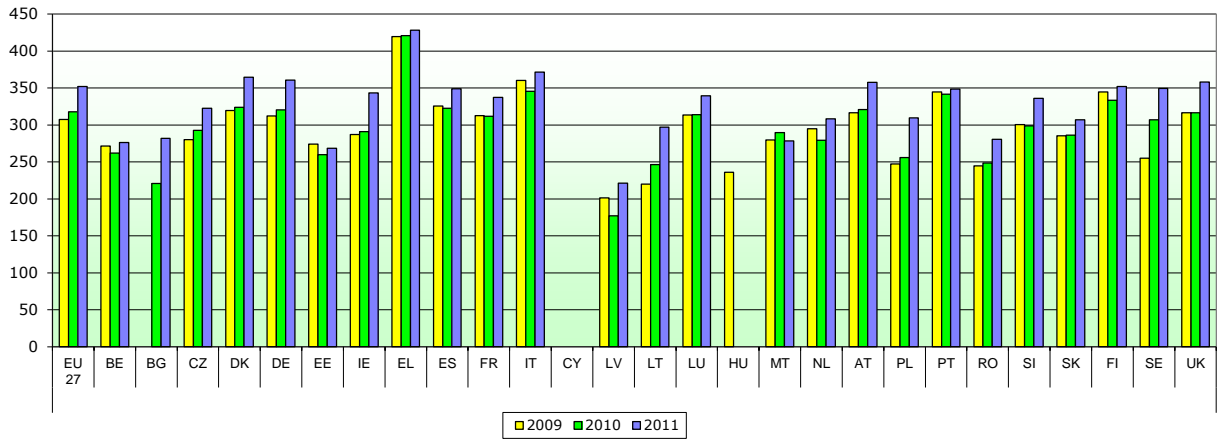
(3) Weighted Ø EUR/100 kg.

(4) Good conformation and average fat cover.

(5) Fairly good conformation and average fat cover.

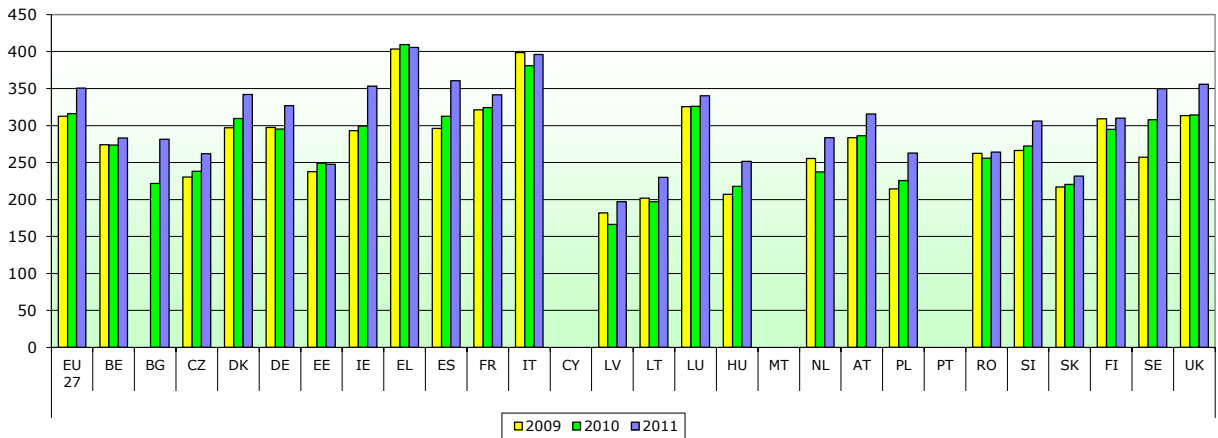
Source: European Commission, Agriculture and Rural Development DG

**Market prices for Adult male bovines (R3)
(EUR/100kg) (1)**



Graph 4.15.5.1 col 5 - 6 - 8

**Market prices for Heifers (R3)
(EUR/100kg) (1)**



Graph 4.15.5.1 col 10 - 11 - 12

**Market prices for Cows (O3)
(EUR/100kg) (1)**

