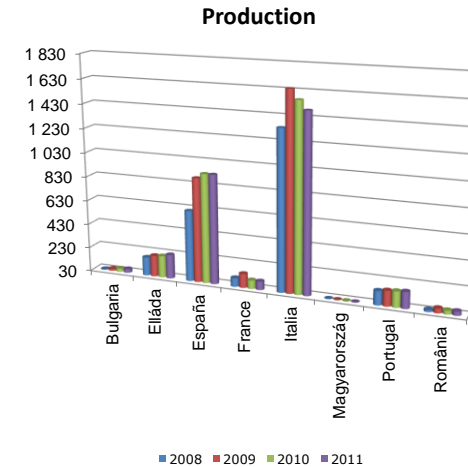
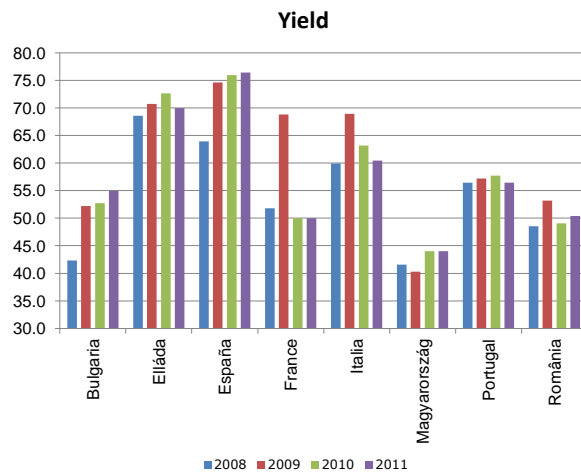
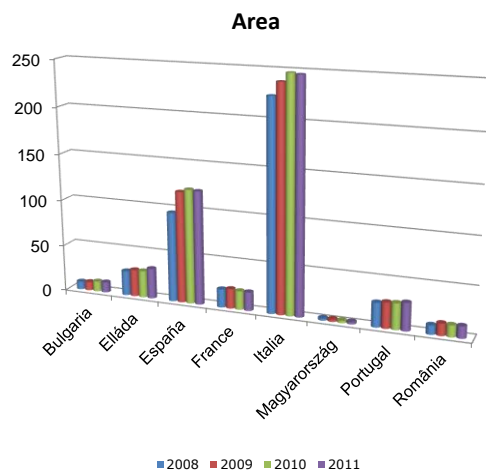


4.2.1.1 Area, yield and production of rice (paddy)

04/11/2012

1	Area					Yield					Production				
	1 000 ha				% TAV	100 kg/ha				% TAV	1 000 t				% TAV
	2008	2009	2010	2011	<u>2011</u> <u>2010</u>	2008	2009	2010	2011	<u>2011</u> <u>2010</u>	2008	2009	2010	2011	<u>2011</u> <u>2010</u>
3	4	5	5	6	8	9	10	10	11	13	14	15	15	16	
Bulgaria	8	9	11	11	1.8	42.3	52.2	52.7	55.0	4.2	36	48	57	61	6.2
Elláda	27	29	29	33	12.8	68.6	70.7	72.7	69.9	-3.8	182	205	210	228	8.6
España	96	119	122	122	-0.6	64.0	74.6	75.9	76.4	0.7	615	889	930	930	0.0
France	20	21	20	20	0.0	51.8	68.8	50.0	50.0	0.0	102	145	100	100	0.0
Italia	224	238	248	247	-0.4	59.9	68.9	63.2	60.4	-4.3	1 343	1 643	1 564	1 490	-4.8
Magyarország	3	3	3	3	0.0	41.6	40.3	44.0	44.0	0.0	10	11	11	11	0.0
Portugal	26	28	28	30	6.0	56.4	57.2	57.7	56.4	-2.2	146	157	161	167	3.6
România	10	13	12	13	2.5	48.5	53.2	49.1	50.4	2.7	47	68	61	64	5.3
EU-27	413	460	473	477	0.8	60.1	68.8	65.5	64.0	-2.3	2 482	3 167	3 095	3 050	-1.4



Source: European Commission (Eurostat) and reports from Member States.

4.2.4.1 Supply balance - rice ⁽¹⁾

EU-27

04/11/2012

	1 000 t wholly milled rice				% TAV
	2007/08	2008/09	2009/10	2010/11	$\frac{2010/11}{2009/10}$
1	2	3	4	5	6
Usable production	1 676	1 495	1 883	1 789	-5.0
Changes in stock	87.0	-92.0	140.0	-53.4	-138.1
Imports	1 115	841	896	972	8.5
Exports	127	105	209	215	2.9
Internal use	2 577	2 323	2 430	2 599	7.0
Self-sufficiency (%)	65.4	64.3	77.5	68.8	-11.2

(1) Broken rice excluded.

Source: European Commission (Eurostat) and reports from Member States.

4.2.5.1 Cif Rotterdam prices ⁽¹⁾ for long-grain rice

(EUR/t) 05/11/2012

	IX	X	XI	XII	I	II	III	IV	V	VI	VII	VIII	Ø	% TAV compared with previous year
1	2	3	4	5	6	7	8	9	10	11	12	13	14	15
<i>Long-grain rice</i>														
2002/03	221.4	221.9	214.3	211.6	202.0	197.7	196.8	207.2	213.7	235.1	241.4	278.6	220.1	-11.0
2003/04	285.2	271.9	272.3	264.2	275.5	286.4	301.2	326.5	341.0	369.2	359.8	345.1	308.2	40.0
2004/05	295.1	278.8	261.1	250.7	258.2	264.0	255.6	258.6	263.5	274.8	271.4	265.5	266.4	-13.6
2005/06	269.9	280.8	289.7	290.3	300.1	323.4	329.0	320.7	313.0	315.4	317.9	351.1	308.4	15.8
2006/07	275.0	277.5	303.7	321.5	331.0	311.2	363.5	304.3	329.7	319.4	317.9	336.5	315.9	2.4
2007/08	294.1	290.0	293.2	299.1	305.4	317.1	319.8	333.9	364.4	430.9	506.5	507.8	355.2	12.4
2008/09	512.7	564.0	524.3	543.5	472.0	432.1	451.0	469.6	421.3	442.8	441.2	427.9	475.2	33.8
2009/10	397.7	348.8	342.3	354.8	379.8	389.8	434.8	472.9	451.0	456.8	454.6	464.2	412.3	-13.2
2010/11	435.2	368.1	420.4	507.5	466.0	485.6	448.9	427.6	416.9	372.0	384.7	367.1	425.0	3.1
2011/12	408.5	465.3	419.3	427.3	440.5	503.3	427.6	423.6	414.9	497.6	466.0	442.0	444.7	4.6

(1) Monthly averages.

Source: European Commission, Agriculture and Rural Development DG.

4.2.6.1 Market prices ⁽¹⁾ for Community paddy rice compared with intervention prices

04/11/2012

Month	Italia ^(a)				España (b)			
	Round-grain rice		Long-grain rice		Medium-grain rice		'Indica' rice	
	EUR/t	% of intervention price	EUR/t	% of intervention price	EUR/t	% of intervention price	EUR/t	% of intervention price
1	2	3	4	5	6	7	8	9
IX 2010	:	:	:	:	265.0	176.7	242.0	161.3
X	285.0	190.0	243.7	162.4	268.0	178.7	239.0	159.3
XI	319.0	212.7	286.4	190.9	265.0	176.7	241.0	160.7
XII	333.0	222.0	280.0	186.7	266.0	177.3	250.0	166.7
I 2011	335.3	223.5	287.5	191.7	267.0	178.0	254.0	169.3
II	382.3	254.8	311.3	207.5	273.0	182.0	256.0	170.7
III	425.0	283.3	321.0	214.0	286.0	190.7	268.0	178.7
IV	417.5	278.3	310.0	206.7	294.0	196.0	291.0	194.0
V	411.0	274.0	322.0	214.7	290.0	193.3	300.0	200.0
VI	372.5	248.3	320.0	213.3	288.0	192.0	:	:
VII	302.5	201.7	320.0	213.3	280.0	186.7	:	:
VIII	291.7	194.4	:	:	270.0	180.0	:	:
IX	:	:	270.0	:	270.0	:	:	:
X	323.0	215.3	280.0	186.7	270.0	180.0	:	:
XI	343.0	228.7	289.0	192.7	270.0	180.0	:	:
XII	329.0	219.3	285.0	190.0	275.0	183.3	:	:
I 2012	324.0	216.0	281.0	187.3	281.0	187.3	:	:
II	312.0	208.0	270.0	180.0	285.0	190.0	267.0	178.0
III	315.0	210.0	271.0	180.7	295.0	196.7	267.0	178.0
IV	325.0	216.7	275.0	183.3	298.0	198.7	266.0	177.3
V	309.0	206.0	279.0	186.0	300.0	200.0	267.0	178.0
VI	305.0	203.3	290.0	193.3	320.0	213.3	:	:
VII	317.0	211.3	305.0	203.3	320.0	213.3	:	:
VIII	:	:	:	:	:	:	:	:

(1) Monthly averages. Intervention price as from 2004/2005: 150 Euro/t

Source: (a) Este Nazionale Risi, (b) Ministry of Agriculture.