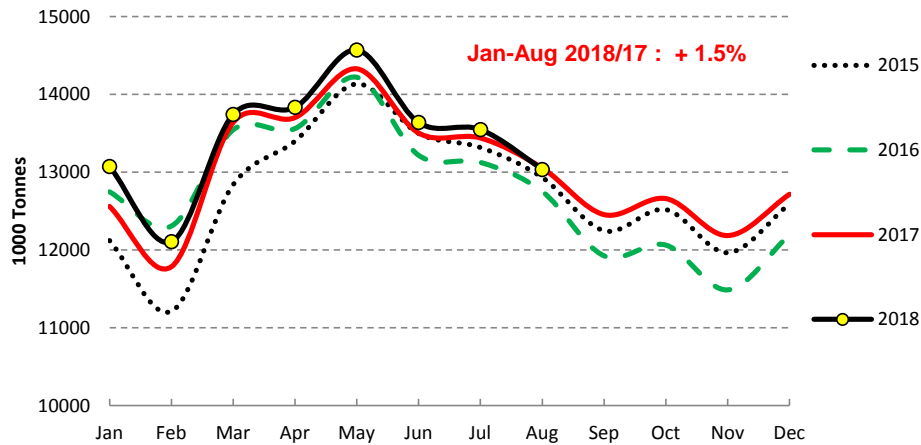


EU Cow's Milk collected

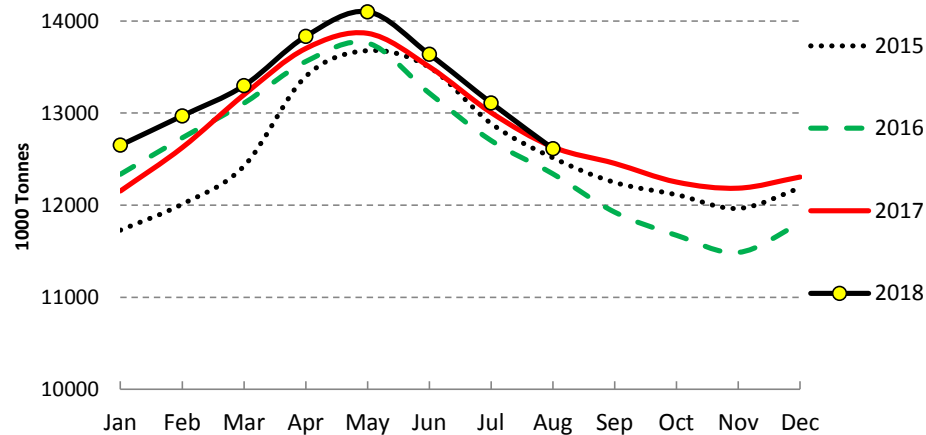
EU - Cows' milk collected



Source : Estat - Newcronos

Last update : Jan-Aug

EU - Cows' milk collected (30d ajusted months)

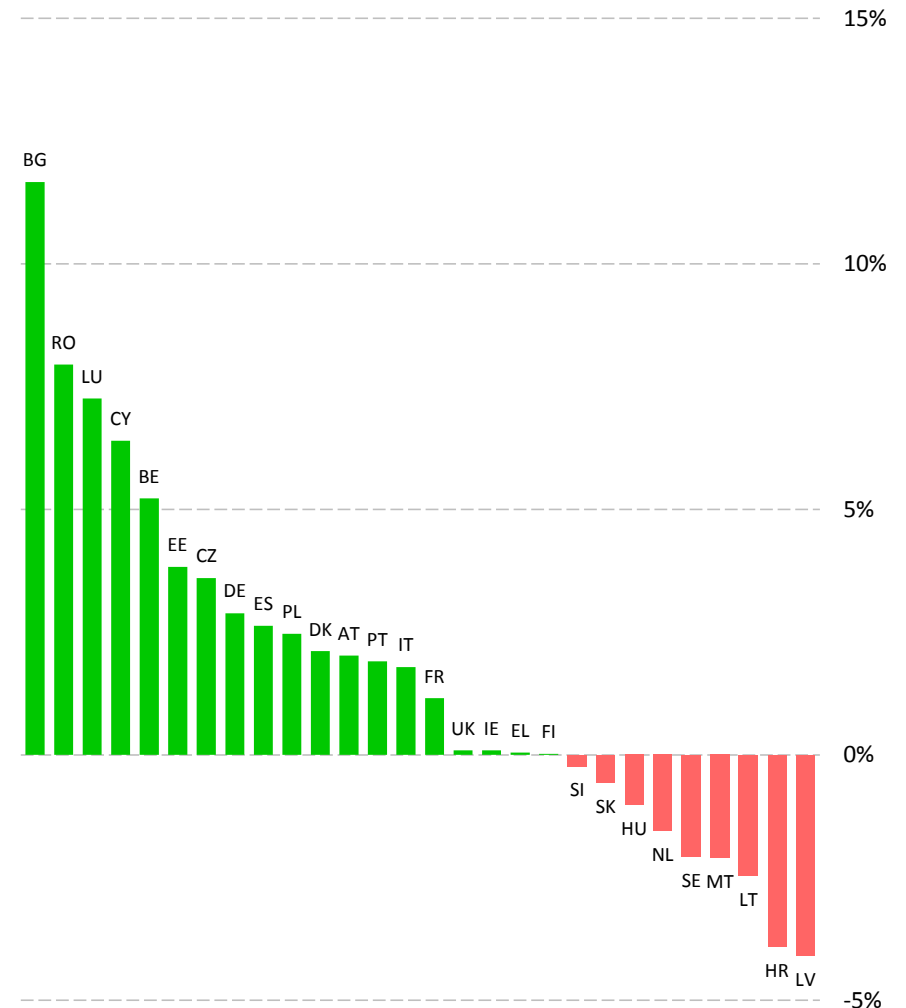


Source : Estat - Newcronos

Last update : Jan-Aug

Cows' milk collected

2018/17 Jan-Aug (y/y %Chg)

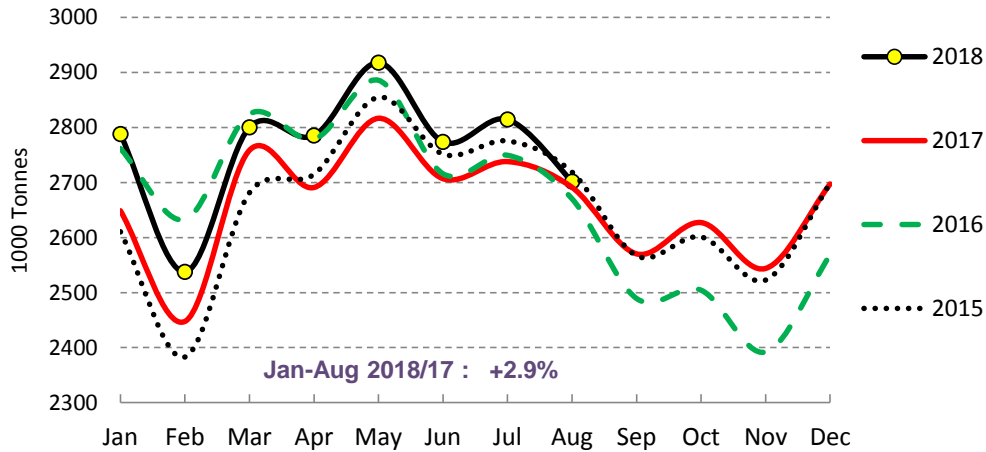


Source : EStat - Newcronos

Last update : Jan-Aug

EU Cows' milk collected - MAIN PRODUCERS (1/2)

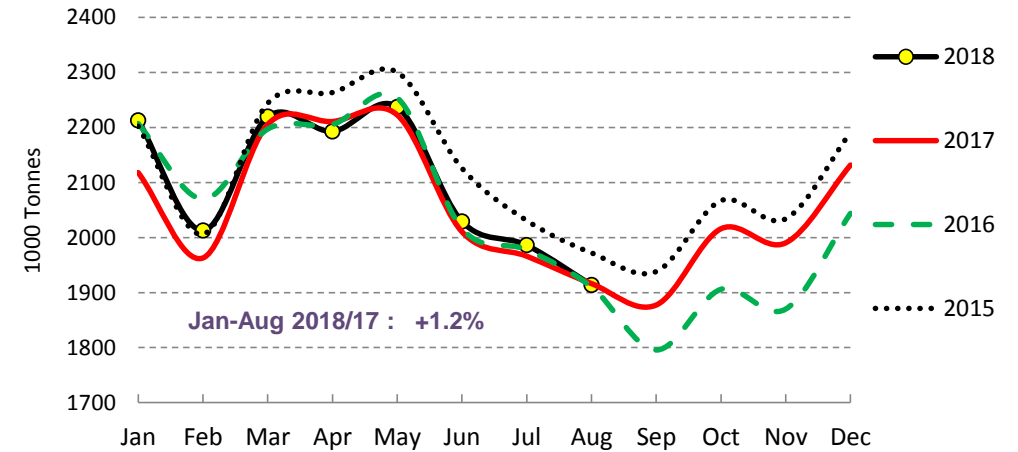
Cows' milk collected - DE



Source : Estat, Newcronos

Last update : Jan-Aug

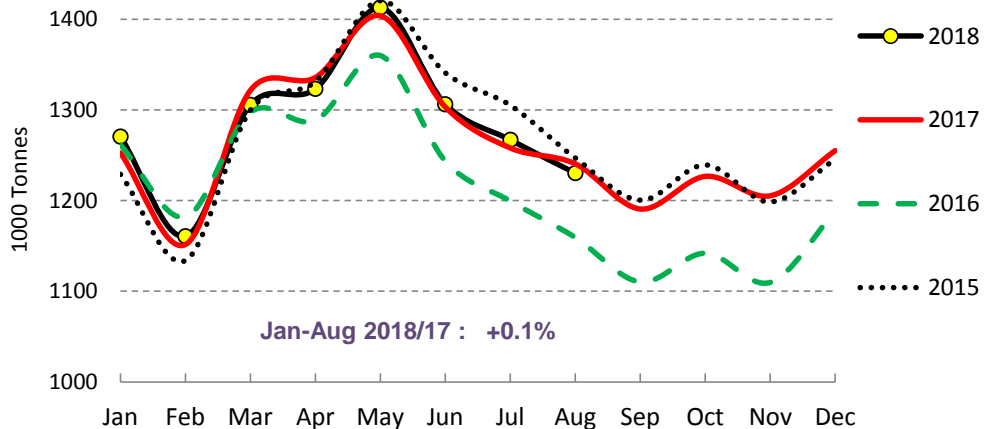
Cows' milk collected - FR



Source : Estat, Newcronos

Last update : Jan-Aug

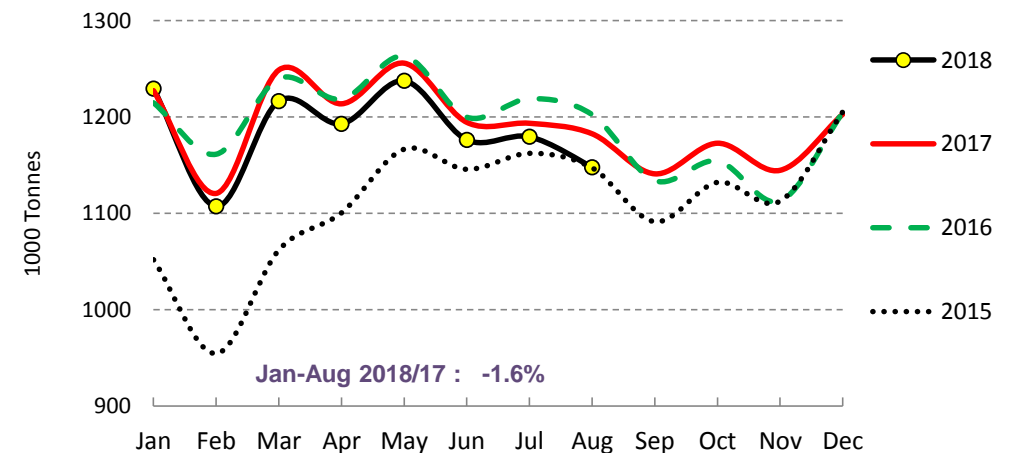
Cows' milk collected - UK



Source : Estat, Newcronos

Last update : Jan-Aug

Cows' milk collected - NL

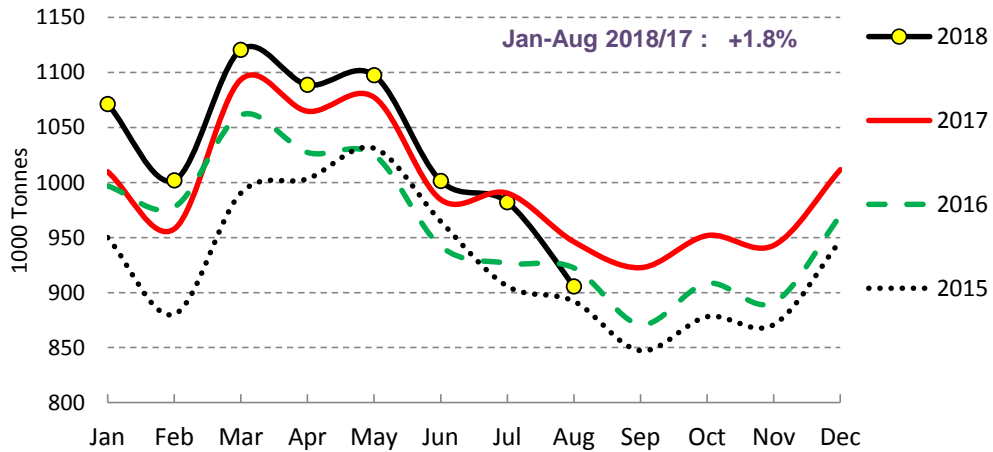


Source : Estat, Newcronos

Last update : Jan-Aug

EU Cows' milk collected - MAIN PRODUCERS (2/2)

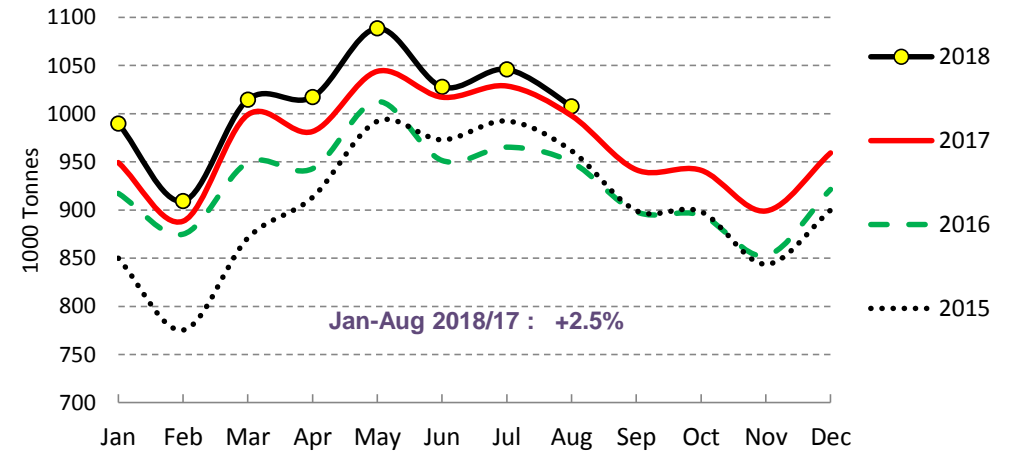
Cows' milk collected - IT



Source : Estat, Newcronos , AGEA

Last update : Jan-Aug

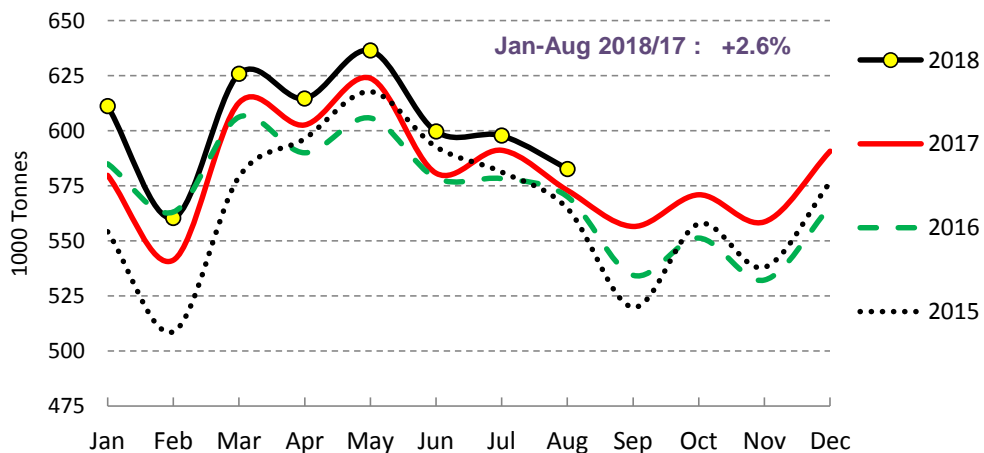
Cows' milk collected - PL



Source : Estat, Newcronos

Last update : Jan-Aug

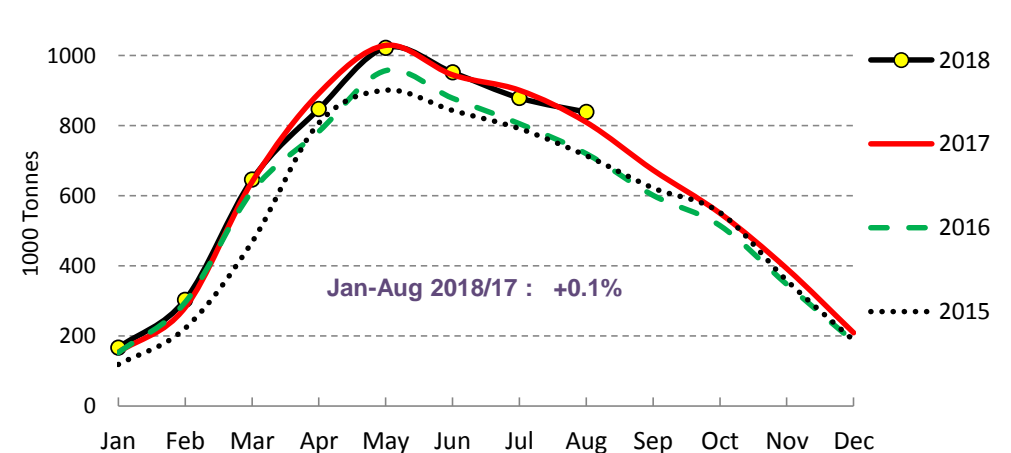
Cows' milk collected - ES



Source : Estat, Newcronos

Last update : Jan-Aug

Cows' milk collected - IE



Source : Estat, Newcronos

Last update : Jan-Aug

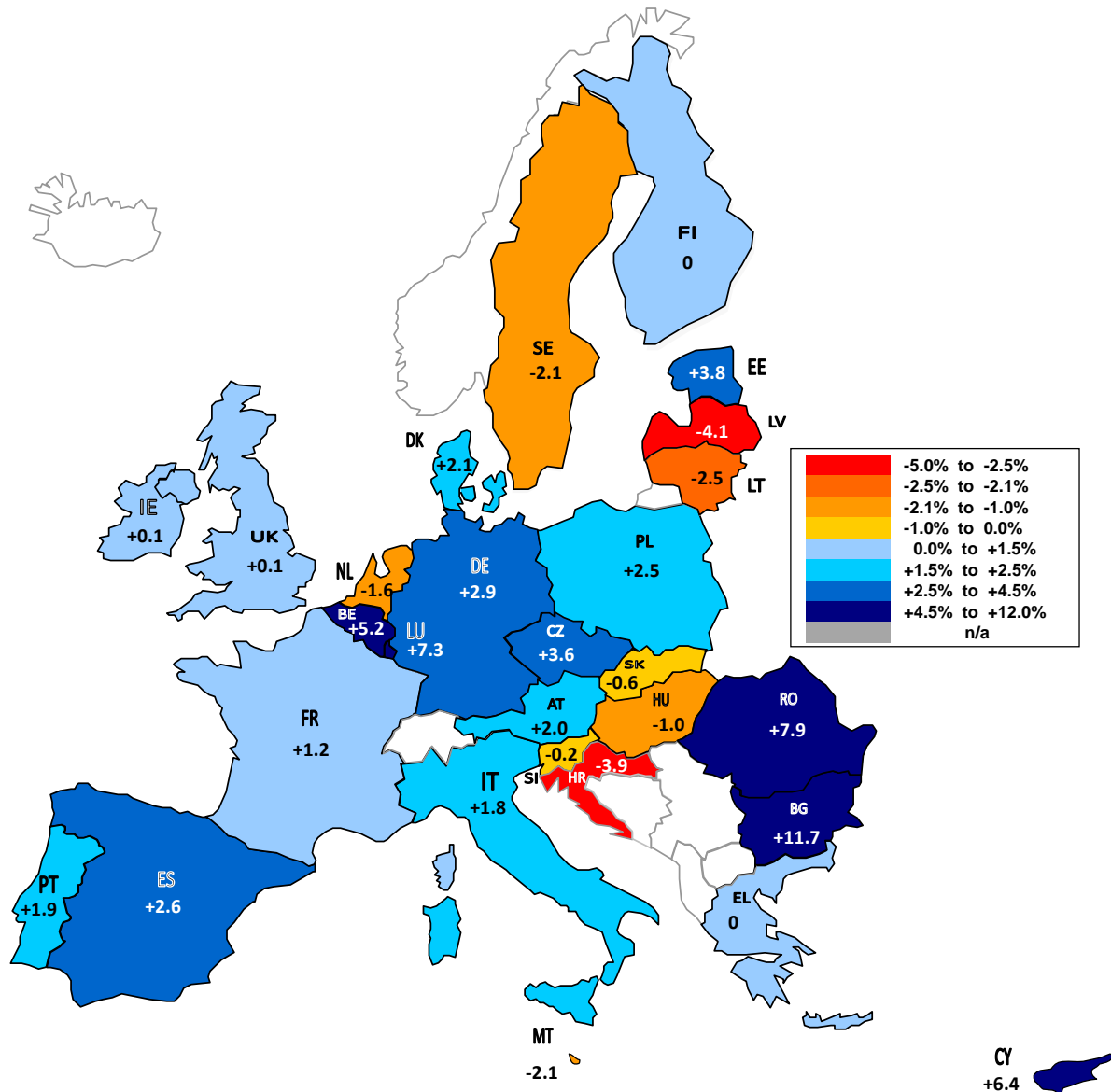
EU Cow's Milk collected

comparison of the last available month with the same month of the previous year

Aug 18 compared to Aug 17					Aug 17 compared to Aug 16					Aug 16 compared to Aug 15				
Rank	evolution in %		evolution in 1000 Tons		Rank	evolution in %		evolution in 1000 Tons		Rank	evolution in %		evolution in 1000 Tons	
	MS	%	MS	Tons		MS	%	MS	Tons		MS	%	MS	Tons
1.	RO	+9.7%	IE	+29	1.	BG	+28.8%	IE	+90	1.	CY	+23.6%	NL	+55
2.	EL	+6.6%	DK	+23	2.	IE	+12.5%	UK	+81	2.	MT	+9.4%	IT	+30
3.	CY	+5.4%	BE	+12	3.	RO	+7.6%	PL	+48	3.	LU	+5.6%	IE	+6
4.	DK	+5.1%	DE	+11	4.	UK	+7.0%	IT	+24	4.	RO	+5.5%	ES	+5
5.	BG	+3.7%	ES	+10	5.	CY	+6.5%	DE	+21	5.	NL	+4.8%	RO	+4
6.	BE	+3.6%	PL	+10	6.	LU	+5.4%	BE	+16	6.	EL	+4.6%	CY	+3
7.	IE	+3.6%	RO	+9	7.	PL	+5.1%	BG	+12	7.	IT	+3.4%	EL	+2
8.	LU	+3.5%	EL	+3	8.	BE	+5.1%	AT	+12	8.	SI	+3.0%	LU	+2
9.	ES	+1.7%	CZ	+3	9.	AT	+4.9%	RO	+6	9.	ES	+0.9%	SI	+1
10.	EE	+1.3%	BG	+2	10.	EE	+3.1%	FR	+6	10.	IE	+0.8%	MT	+0
11.	CZ	+1.1%	LU	+1	11.	IT	+2.6%	ES	+3	11.	CZ	+0.0%	CZ	+0
12.	PL	+1.0%	CY	+1	12.	LT	+1.2%	EE	+2	12.	DK	-0.9%	LV	-1
13.	HU	+0.7%	HU	+1	13.	SK	+1.2%	LT	+2	13.	LV	-1.2%	EE	-2
14.	DE	+0.4%	EE	+1	14.	PT	+0.9%	LU	+2	14.	PL	-1.2%	HU	-2
15.	PT	-0.1%	MT	-0	15.	DE	+0.8%	PT	+1	15.	HU	-1.3%	FI	-3
16.	FR	-0.1%	PT	-0	16.	SI	+0.7%	CZ	+1	16.	FI	-1.4%	HR	-3
17.	UK	-0.8%	SK	-1	17.	CZ	+0.5%	CY	+1	17.	DE	-1.8%	BG	-4
18.	SK	-1.7%	SI	-2	18.	ES	+0.5%	SK	+1	18.	EE	-2.5%	DK	-4
19.	FI	-1.9%	FR	-3	19.	LV	+0.4%	FI	+1	19.	FR	-3.1%	SK	-5
20.	MT	-1.9%	HR	-3	20.	FR	+0.3%	LV	+0	20.	AT	-3.6%	LT	-6
21.	SE	-2.3%	FI	-4	21.	FI	+0.3%	SI	+0	21.	LT	-3.7%	PT	-7
22.	NL	-2.9%	SE	-5	22.	DK	-0.3%	MT	-0	22.	SE	-4.1%	AT	-9
23.	AT	-4.2%	LV	-8	23.	SE	-0.7%	HR	-1	23.	PT	-4.5%	SE	-10
24.	IT	-4.3%	UK	-10	24.	NL	-1.7%	SE	-2	24.	SK	-6.8%	PL	-12
25.	SI	-4.4%	AT	-11	25.	HU	-1.7%	DK	-2	25.	HR	-6.8%	BE	-25
26.	HR	-7.6%	LT	-12	26.	HR	-3.0%	HU	-2	26.	UK	-7.0%	DE	-49
27.	LT	-7.9%	NL	-35	27.	EL	-4.8%	EL	-2	27.	BE	-7.2%	FR	-62
28.	LV	-9.9%	IT	-40	28.	MT	-10.6%	NL	-20	28.	BG	-7.9%	UK	-88
	EU28	-0.1%	EU28	-19		EU28	+2.4%	EU28	+301		EU28	-1.4%	EU28	-180

EU Milk Deliveries compared to last period (in %)

(Jan - Aug 2018 / Jan - Aug 2017)

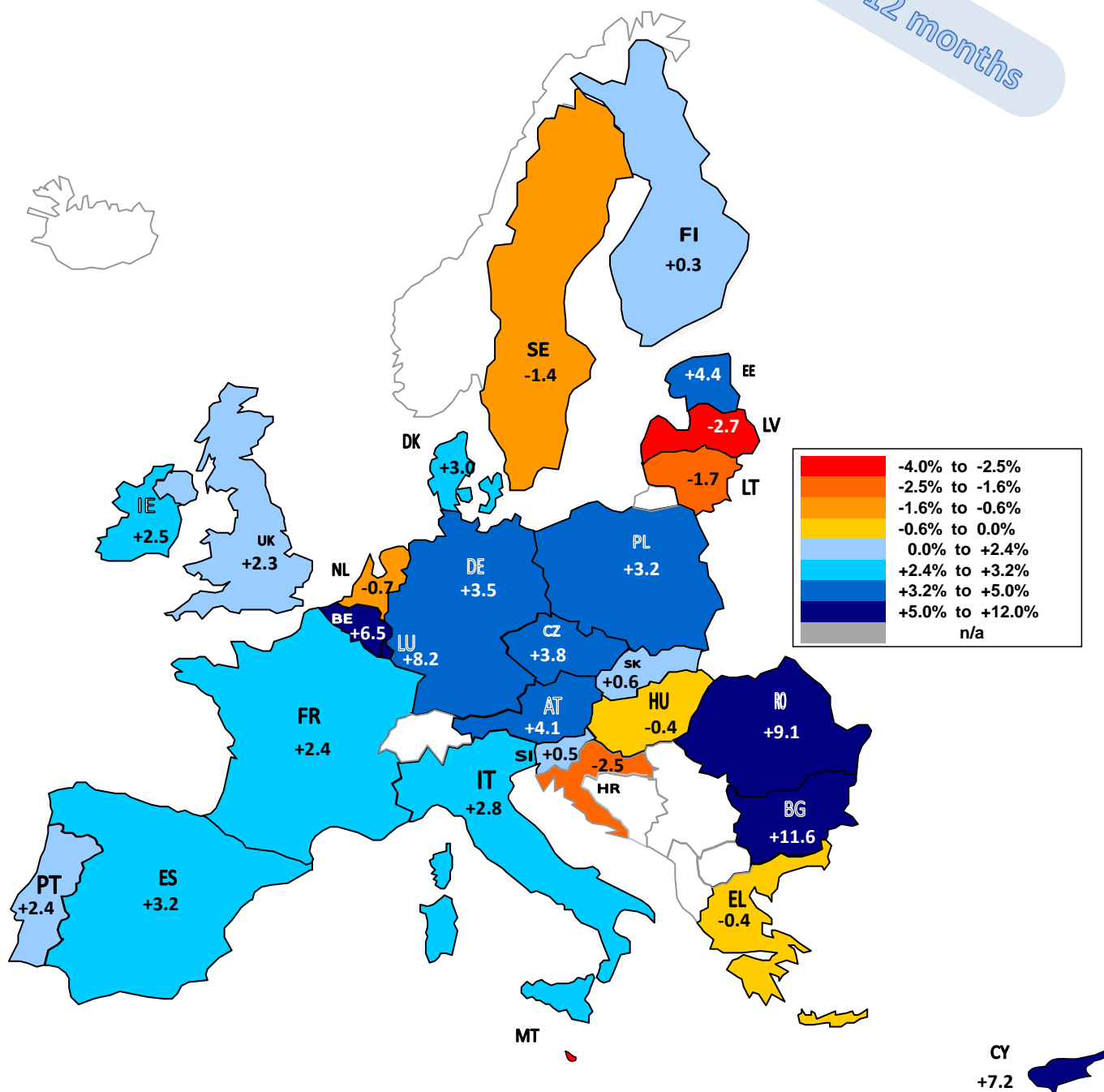


Source : MS' Communications to Eurostat, FEAGA, AGEA, Reg.479/2010.1(a)1

EU Milk Deliveries compared to last period (in %)

(Sep 2017 - Aug 2018 / Sep 2016 - Aug 2017)

Last 12 months



Source : MS' Communications to Eurostat, FEAGA, AGEA, Reg.479/2010.1(a)1