



➔ [Imports](#)

Last update : 23.05.2019

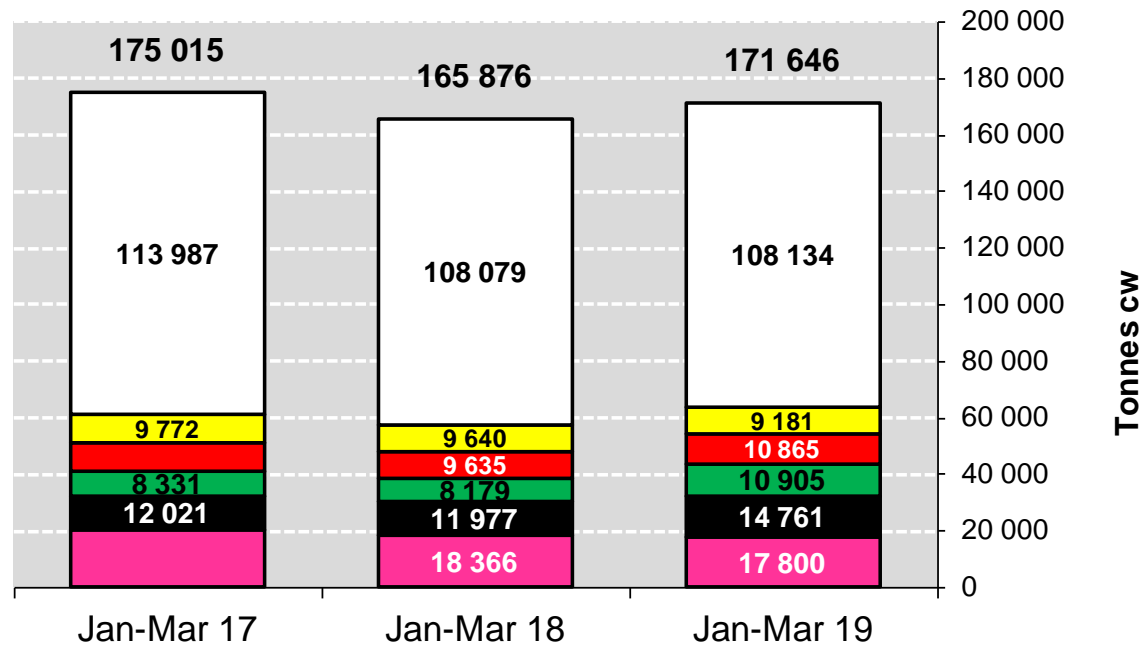
Exports in Tons

Carcase weight	2015		2016		2017		2018		Jan-Mar 19		Compared to Jan-Mar 18
	tonnes	%	tonnes	%	tonnes	%	tonnes	%	tonnes	%	
Hong Kong	45 198	7.5%	58 383	8.3%	90 659	11.9%	69 795	9.5%	17 800	10.4%	- 3.1%
Israel	18 851	3.1%	41 535	5.9%	44 196	5.8%	47 812	6.5%	14 761	8.6%	+ 23.2%
Algeria	16 085	2.7%	25 004	3.5%	26 305	3.4%	35 361	4.8%	10 905	6.4%	+ 33.3%
Ghana	39 225	6.6%	39 680	5.6%	41 007	5.4%	39 906	5.4%	10 865	6.3%	+ 12.8%
Lebanon	50 263	8.4%	47 033	6.7%	38 554	5.0%	42 525	5.8%	9 181	5.3%	- 4.8%
Bosnia-Herz.	39 896	6.7%	38 875	5.5%	34 711	4.5%	38 763	5.3%	8 772	5.1%	+ 44.4%
Philippines	13 052	2.2%	24 454	3.5%	38 271	5.0%	29 794	4.1%	7 870	4.6%	+ 11.1%
Ivory Coast	36 018	6.0%	37 210	5.3%	38 582	5.0%	37 744	5.1%	6 904	4.0%	- 25.8%
Turkey	57 504	9.6%	71 030	10.1%	96 414	12.6%	95 505	13.0%	6 225	3.6%	- 74.1%
Switzerland	26 015	4.3%	25 599	3.6%	27 369	3.6%	24 416	3.3%	5 838	3.4%	+ 5.3%
China	6 027	1.0%	10 804	1.5%	6 229	0.8%	7 347	1.0%	4 733	2.8%	+ 184.6%
Chile	50	0.0%	2 228	0.3%	8 961	1.2%	16 410	2.2%	4 090	2.4%	+ 44.4%
Libya	19 691	3.3%	29 723	4.2%	27 848	3.6%	27 832	3.8%	3 788	2.2%	+ 10.1%
Morocco	4 703	0.8%	7 517	1.1%	10 015	1.3%	11 430	1.6%	3 575	2.1%	+ 38.5%
Ukraine	2 859	0.5%	7 875	1.1%	7 331	1.0%	10 465	1.4%	3 546	2.1%	+ 63.0%
South Africa	7 508	1.3%	7 335	1.0%	7 569	1.0%	12 113	1.7%	3 509	2.0%	+ 13.5%
Russia	13 546	2.3%	16 433	2.3%	22 989	3.0%	17 336	2.4%	3 407	2.0%	+ 79.9%
Other Destinations	202 225	33.8%	215 988	30.6%	197 226	25.8%	168 778	23.0%	45 878	26.7%	
Extra-EU	598 715		706 705		764 236		733 332		171 646		
% change			+ 18%		+ 8%		- 4%		+ 3.5%		

Source : Estat - Comext



EU EXPORTS of Beef & Veal (Tonnes cwe)



■ Hong Kong
 ■ Israel
 ■ Algeria
 ■ Ghana
 □ Other destinations



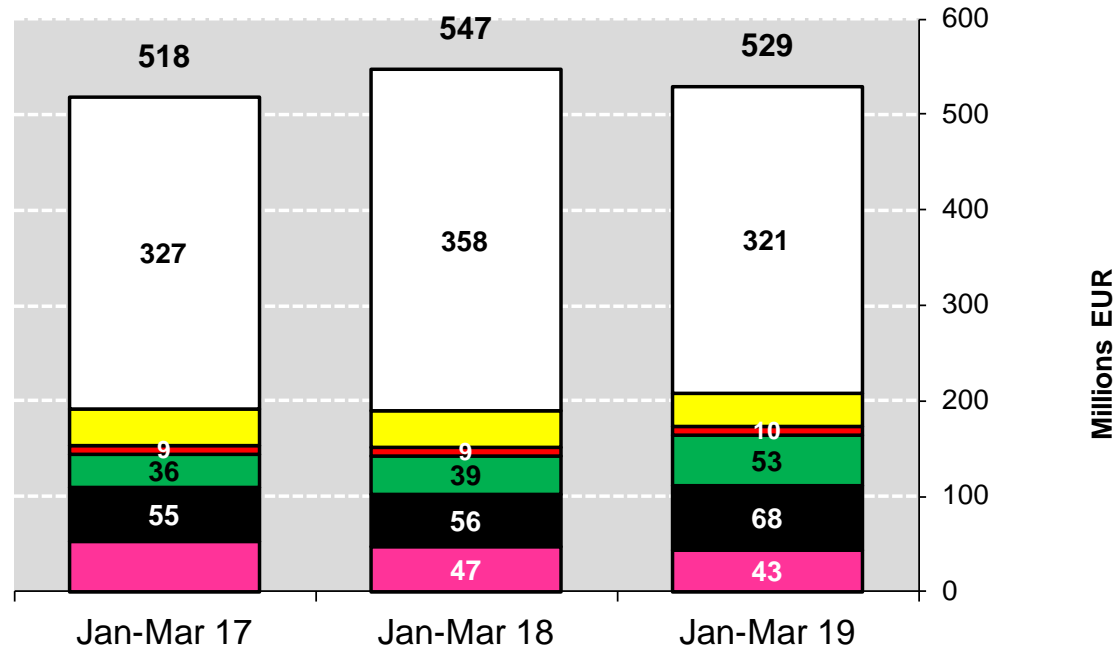
Exports in thousand EUR

	2015		2016		2017		2018		Jan-Mar 19		Compared to Jan-Mar 18
	Millions €	%	Millions €	%	Millions €	%	Millions €	%	Millions €	%	
Israel	83	4.4%	187	9.9%	205	10.8%	224	11.8%	68	3.6%	+ 20.3%
Algeria	80	4.2%	112	5.9%	113	6.0%	167	8.8%	53	2.8%	+ 35.2%
Hong Kong	121	6.4%	138	7.3%	236	12.4%	190	10.0%	43	2.3%	- 7.2%
Turkey	342	18.1%	419	22.1%	537	28.3%	464	24.5%	35	1.8%	- 71.3%
Lebanon	192	10.1%	180	9.5%	150	7.9%	168	8.9%	35	1.8%	- 8.5%
Switzerland	133	7.0%	132	7.0%	139	7.3%	131	6.9%	29	1.5%	+ 0.7%
Russia	74	3.9%	75	4.0%	135	7.1%	137	7.2%	27	1.4%	+ 83.5%
Bosnia-Herz.	100	5.3%	94	5.0%	90	4.8%	108	5.7%	24	1.3%	+ 41.2%
Morocco	19	1.0%	37	2.0%	52	2.8%	60	3.2%	19	1.0%	+ 34.3%
Libya	89	4.7%	136	7.2%	123	6.5%	130	6.9%	16	0.8%	+ 1.9%
Philippines	20	1.0%	35	1.9%	64	3.4%	49	2.6%	13	0.7%	+ 4.6%
Ghana	33	1.8%	34	1.8%	36	1.9%	36	1.9%	10	0.5%	+ 9.9%
USA	11	0.6%	16	0.8%	23	1.2%	29	1.5%	10	0.5%	+ 56.4%
China	12	0.6%	19	1.0%	12	0.6%	12	0.6%	8	0.4%	+++
Norway	70	3.7%	63	3.3%	45	2.4%	29	1.5%	7	0.4%	- 35.9%
Uzbekistan	48	2.5%	27	1.4%	25	1.3%	32	1.7%	7	0.3%	+++
North Macedonia	28	1.5%	28	1.5%	29	1.5%	27	1.4%	6	0.3%	+ 8.3%
Other Destinations	439	23.2%	486	25.7%	497	26.2%	482	25.4%	122	6.4%	
Extra-EU	1 895		2 220		2 510		2 474		529		
% change			+ 17%		+ 13%		- 1%		- 3.2%		

Source : Estat - Comext



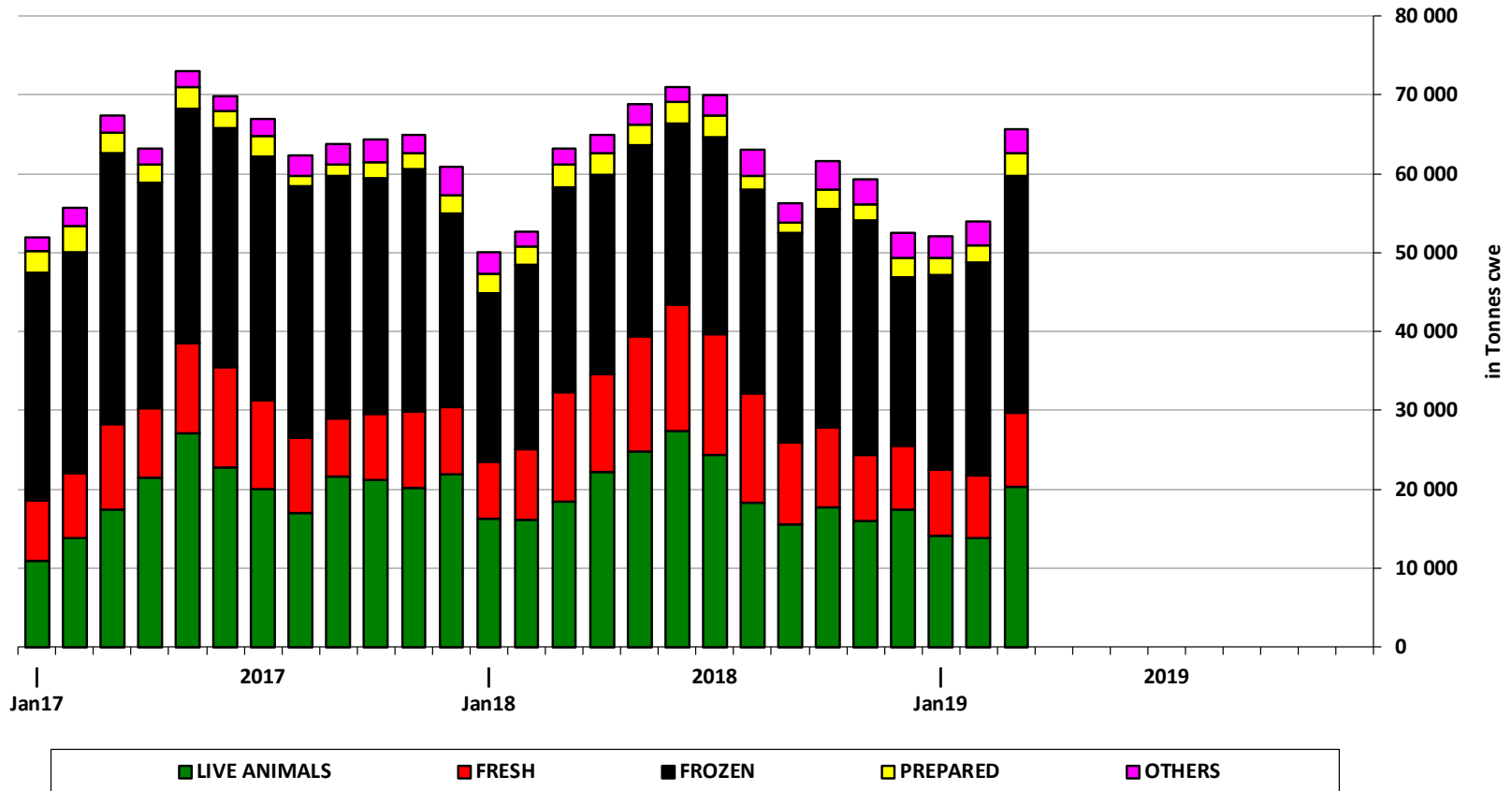
EU EXPORTS of Beef & Veal (Million EUR)



■ Hong Kong ■ Israel ■ Algeria ■ Ghana □ Other destinations



EU-28 Exports of BEEF products





➔ [Exports](#)

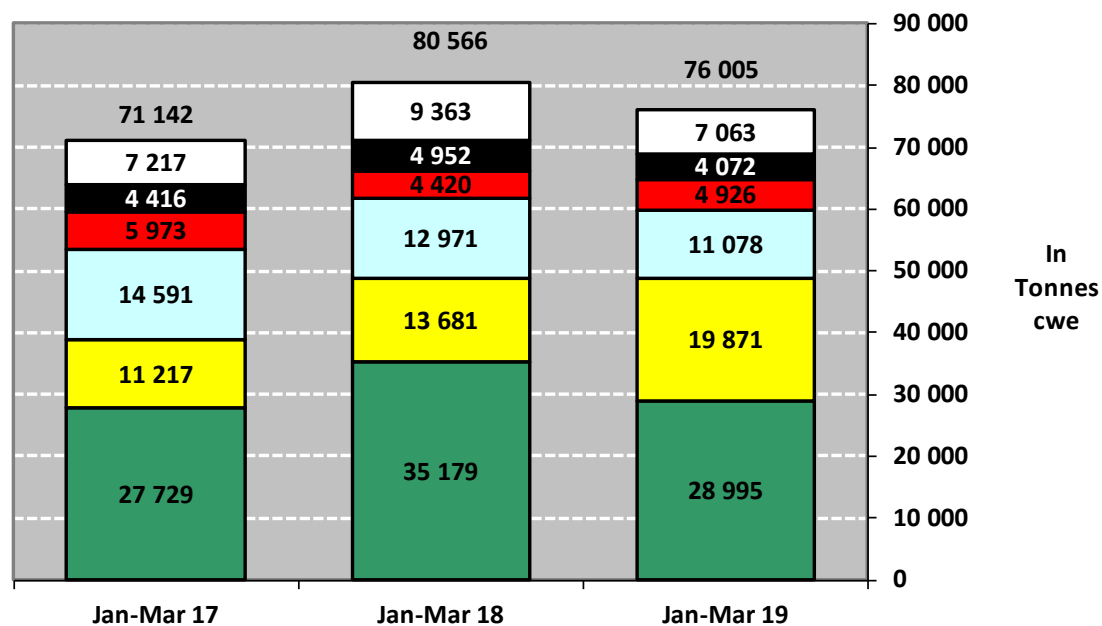
Imports in Tons

Carcase Weight	2015		2016		2017		2018		Jan-Mar 19		Compared to Jan-Mar 18
	tonnes	%	tonnes	%	tonnes	%	tonnes	%	tonnes	%	
Brazil	136 858	42.4%	140 319	42.0%	115 392	37.7%	140 243	41.1%	28 995	38.1%	- 17.6%
Argentina	42 149	13.0%	43 542	13.0%	49 890	16.3%	69 996	20.5%	19 871	26.1%	+ 45.2%
Uruguay	46 287	14.3%	56 747	17.0%	58 016	19.0%	52 462	15.4%	11 078	14.6%	- 14.6%
USA	24 132	7.5%	20 499	6.1%	21 624	7.1%	19 319	5.7%	4 926	6.5%	+ 11.4%
Australia	30 884	9.6%	27 850	8.3%	21 990	7.2%	20 868	6.1%	4 072	5.4%	- 17.8%
New Zealand	11 380	3.5%	9 869	3.0%	8 093	2.6%	8 669	2.5%	1 632	2.1%	- 25.5%
Paraguay	1 915	0.6%	5 979	1.8%	6 915	2.3%	6 287	1.8%	1 315	1.7%	- 24.0%
Switzerland	5 090	1.6%	5 500	1.6%	5 138	1.7%	5 437	1.6%	1 244	1.6%	- 13.0%
Namibia	12 112	3.7%	10 686	3.2%	7 705	2.5%	5 585	1.6%	794	1.0%	- 43.2%
Botswana	9 258	2.9%	9 382	2.8%	7 718	2.5%	7 025	2.1%	770	1.0%	- 53.8%
Canada	428	0.1%	421	0.1%	513	0.2%	1 343	0.4%	624	0.8%	+++
Other Origins	2 607	0.8%	3 157	0.9%	3 111	1.0%	3 818	1.1%	685	0.9%	
Extra-EU	323 099		333 952		306 105		341 053		76 005		
% change			+ 3%		- 8%		+ 11%		- 5.7%		

Source : Estat - Comext



IMPORTS of Beef & Veal into EU (Tonnes cwe)





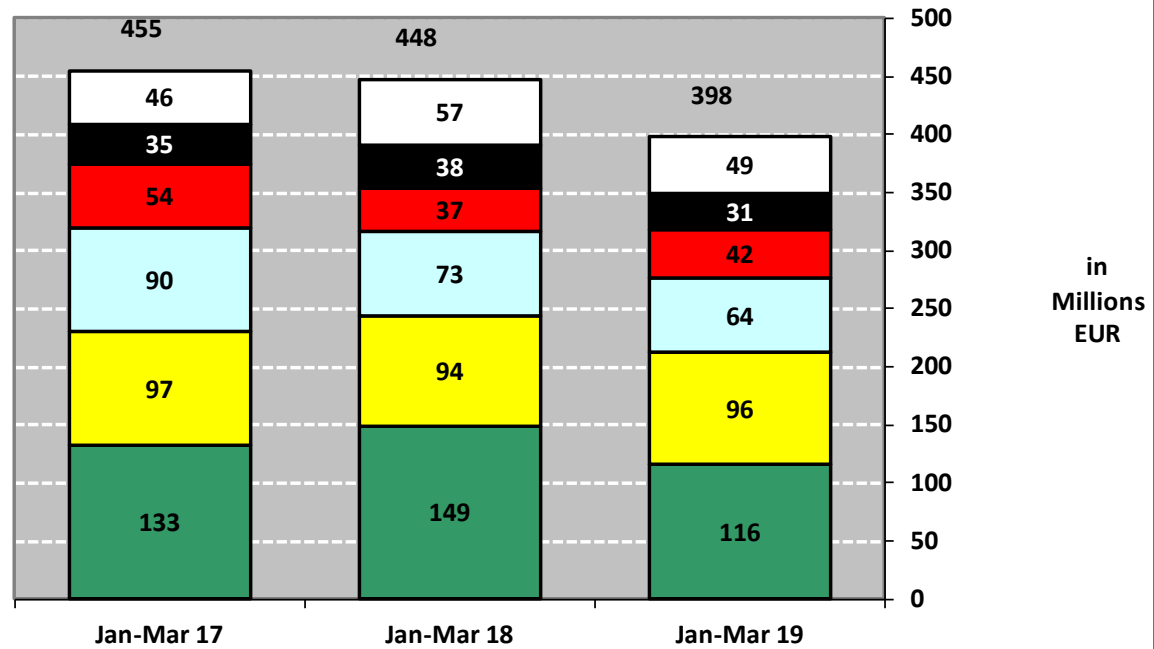
Imports in Million EUR

	2015		2016		2017		2018		Jan-Mar 19		Compared to Jan-Mar 18
	Million €	%	Million €	%	Million €	%	Million €	%	Million €	%	
Brazil	674	32.7%	637	30.9%	537	26.0%	585	28.3%	116	5.6%	- 22.2%
Argentina	374	18.2%	389	18.8%	409	19.8%	442	21.4%	96	4.6%	+ 1.5%
Uruguay	308	14.9%	325	15.7%	333	16.1%	303	14.7%	64	3.1%	- 11.9%
USA	245	11.9%	189	9.1%	185	8.9%	161	7.8%	42	2.0%	+ 13.7%
Australia	212	10.3%	200	9.7%	173	8.4%	157	7.6%	31	1.5%	- 18.9%
New Zealand	83	4.0%	76	3.7%	68	3.3%	69	3.4%	13	0.6%	+ 12.6%
Paraguay	12	0.6%	33	1.6%	37	1.8%	31	1.5%	12	0.6%	- 30.7%
Switzerland	39	1.9%	43	2.1%	40	1.9%	45	2.2%	6	0.3%	- 29.0%
Namibia	54	2.6%	44	2.1%	32	1.5%	25	1.2%	5	0.3%	+++
Botswana	39	1.9%	35	1.7%	30	1.5%	28	1.4%	4	0.2%	+ 48.8%
Canada	4	0.2%	4	0.2%	6	0.3%	13	0.6%	4	0.2%	- 45.4%
Other Origins	19	0.9%	22	1.1%	21	1.0%	24	1.2%	6	0.3%	
Extra-EU	2 063		1 996		1 871		1 883		398		
% change			- 3%		- 6%		+ 1%		- 11.1%		

Source : Estat - Comext



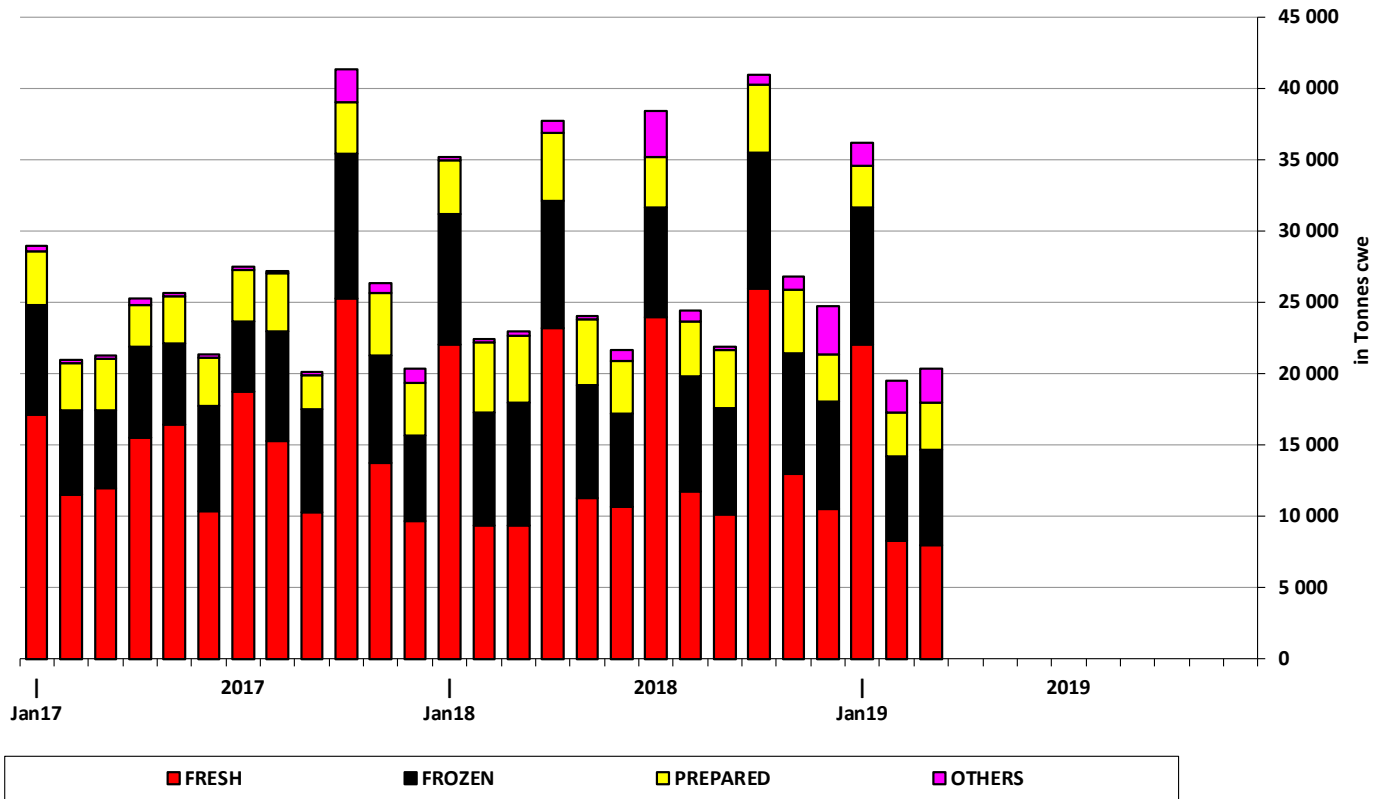
IMPORTS of Beef & Veal into EU (Millions EUR)



■ Brazil
 ■ Argentina
 ■ Uruguay
 ■ USA
 ■ Australia
 ■ Other Destinations

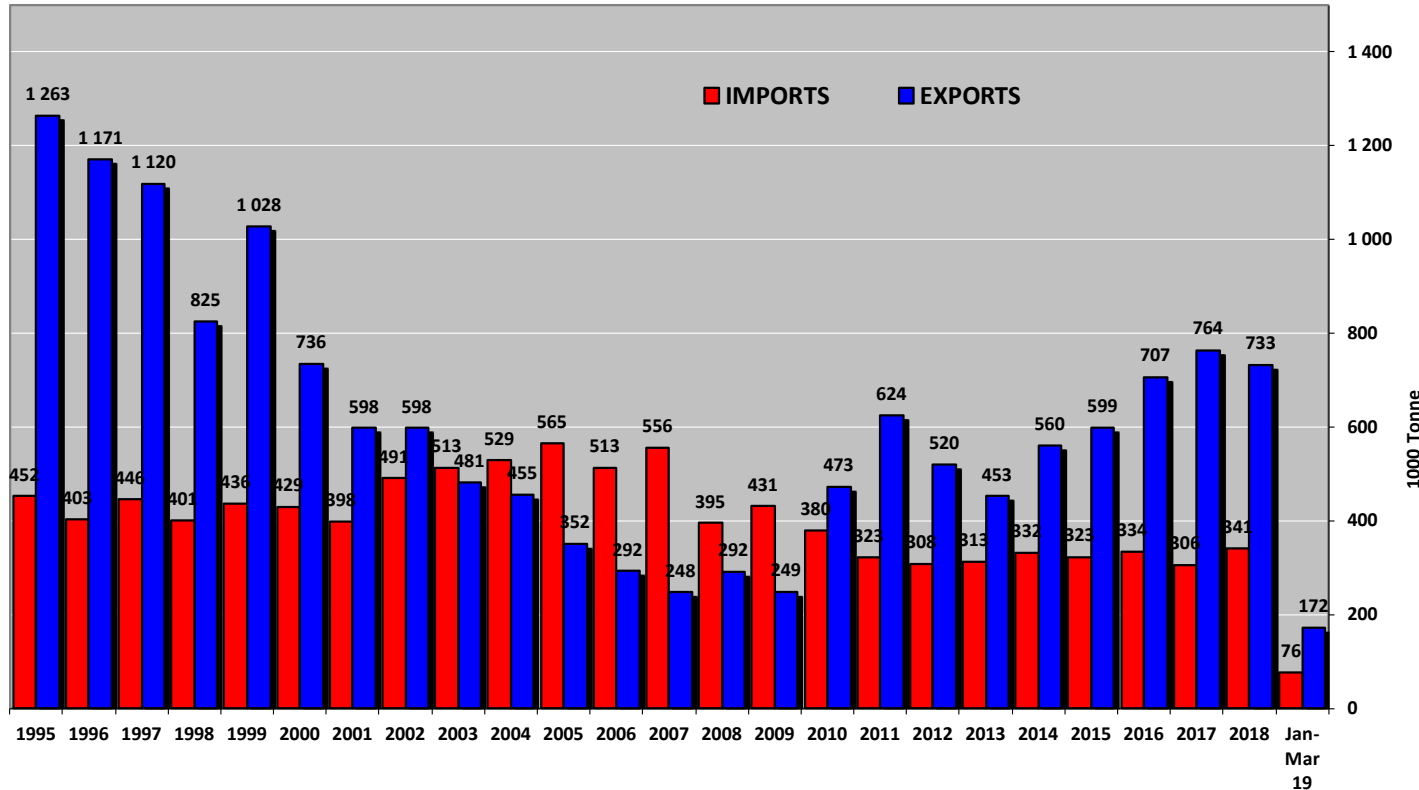


EU-28 Imports of BEEF products



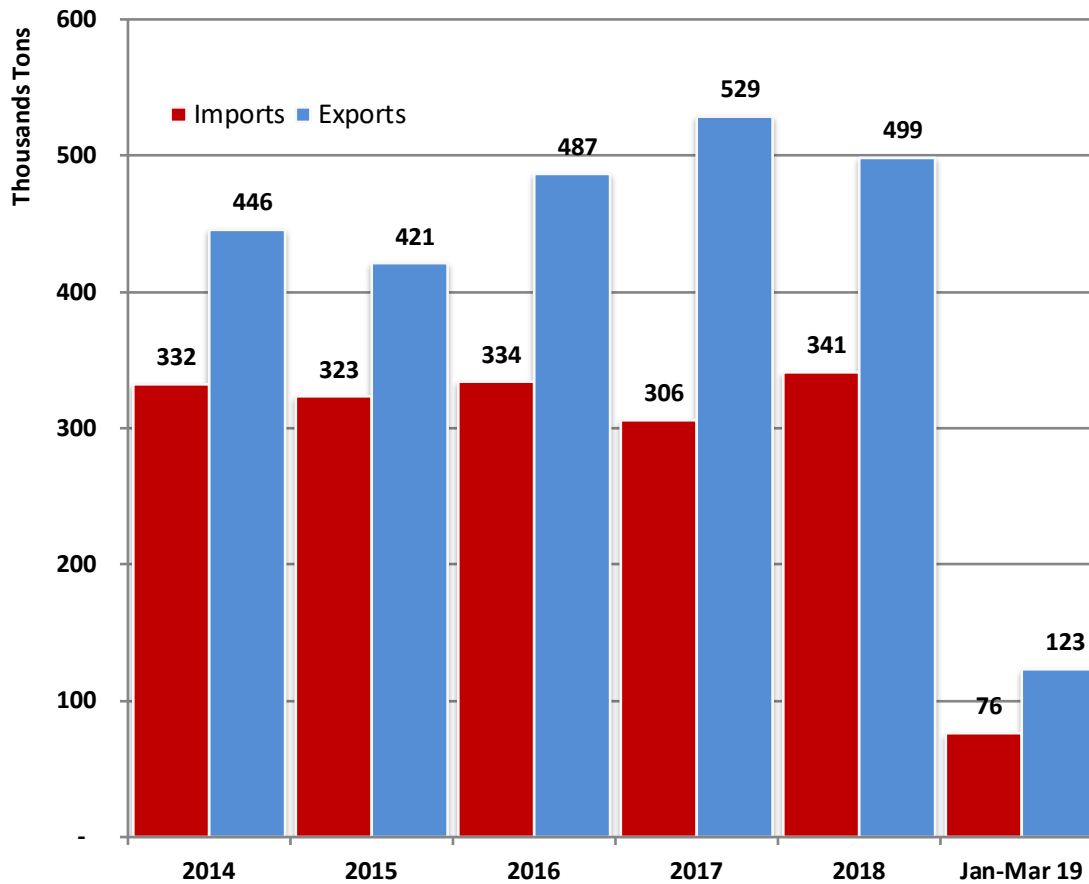


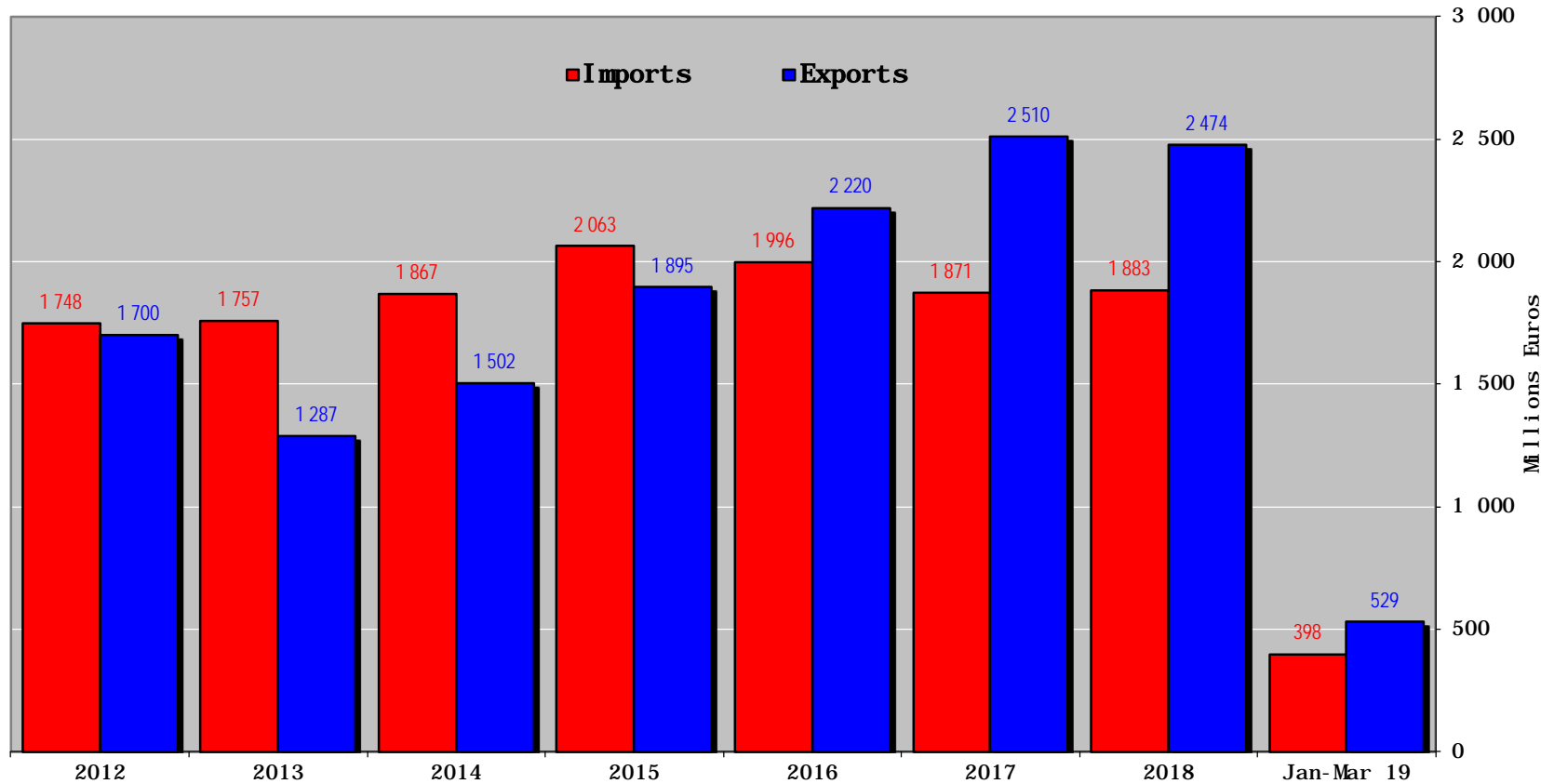
Beef Trade in 1000 Tons





EU Trade of Beef Products (except Live Animals)







EU Trade of Beef Products (except Live Animals)

