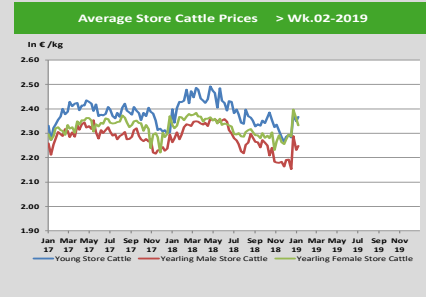
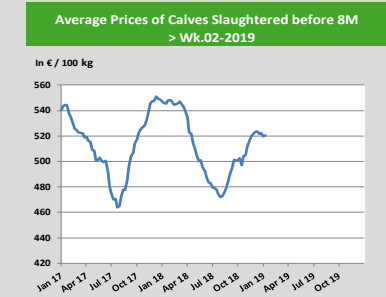
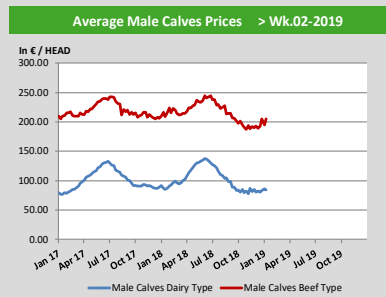
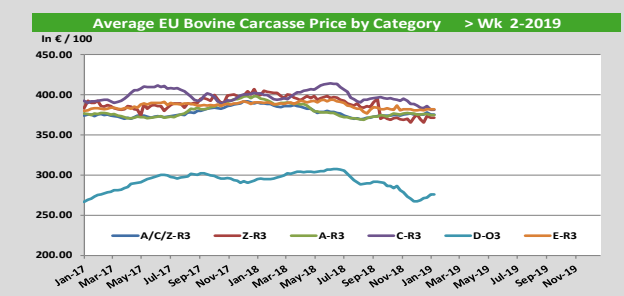
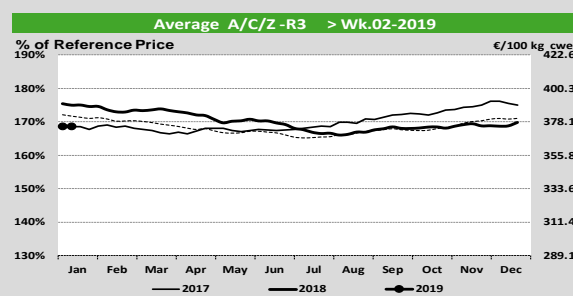
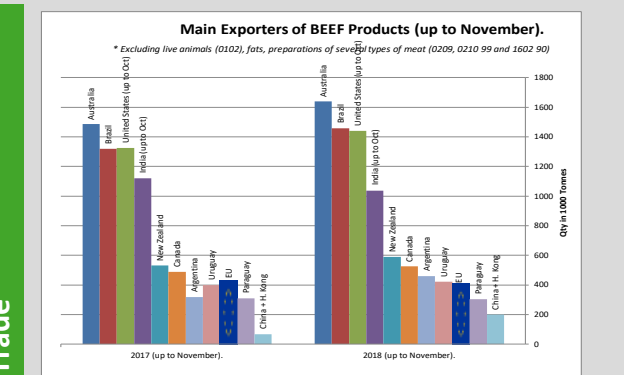
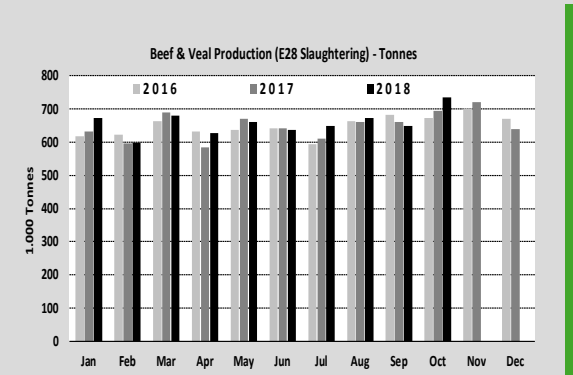
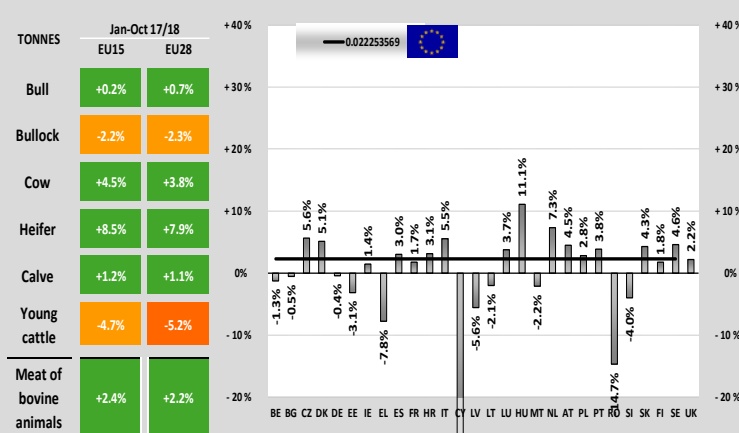


Prices

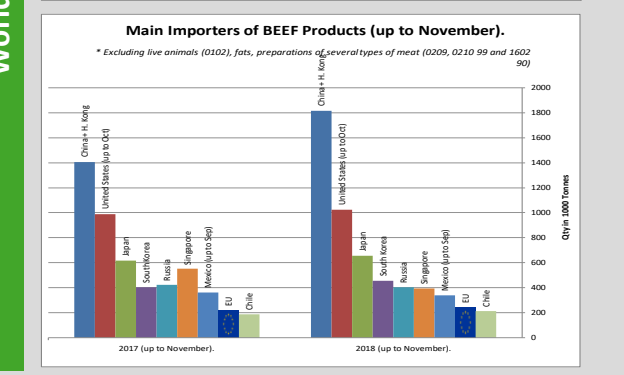
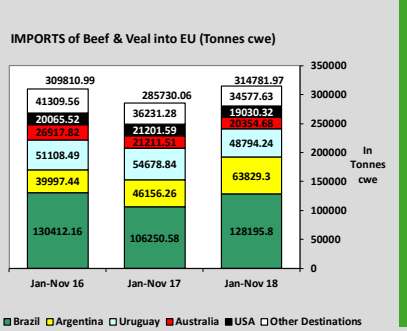
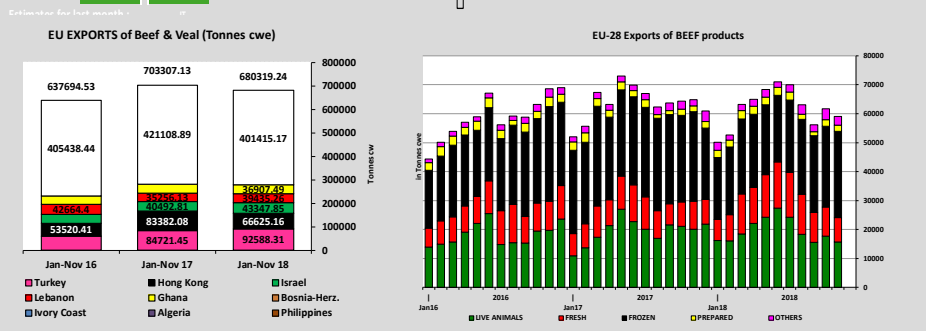
EU Prices week		2	Evolution since last week	Evolution since last month	Evolution since last year
Carcasse	Average A/C/Z -R3	375.1	-0.5%	-0.1%	-3.6%
	Young Bovines (Z)	371.4	+0.4%	-1.0%	+0.4%
	Young Bulls (A)	377.1	-0.3%	+0.7%	-4.0%
	Steers (C)	383.8	-0.3%	-1.2%	-4.9%
	Cows (D)	275.9	+0.8%	+3.3%	-6.7%
Heifers (E)	381.5	-0.1%	+0.3%	-2.3%	
Live Animals	Male Calves Dairy Type	84.66	-2.2%	+5.3%	-2.9%
	Male Calves Beef Type	205.1	+5.3%	+6.2%	+5.3%
	Young Store Cattle	2.37	+0.7%	+3.5%	+1.0%
	Yearling Male Store Cattle	2.25	+0.7%	+2.6%	-1.3%
	Yearling Female Store Cattle	2.33	-1.2%	+2.5%	+0.5%
	Calves slaughtered <8M	520.7	+0.2%	-0.5%	-4.6%



Production



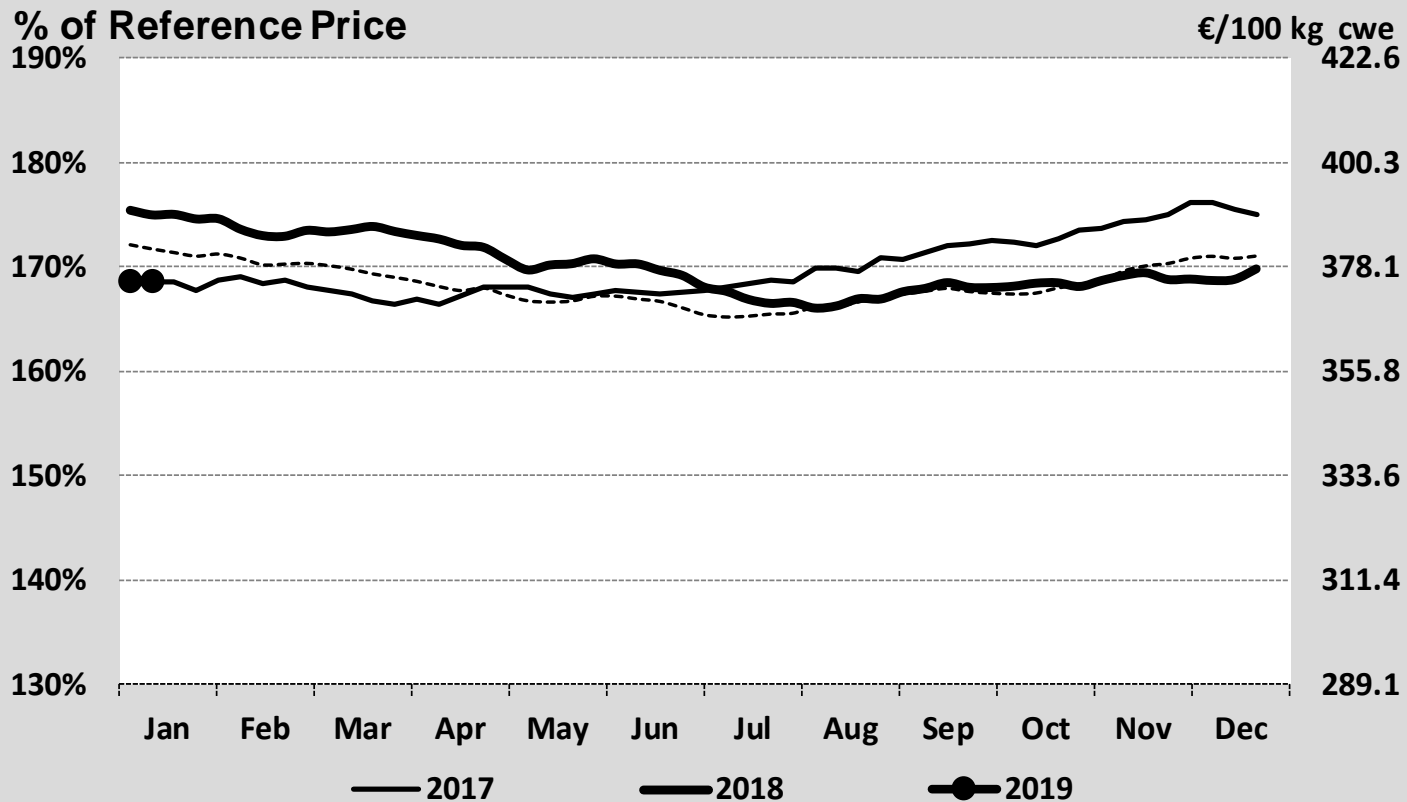
Trade



EU Prices week		2	Evolution since last week	Evolution since last month	Evolution since last year
Carcasse	Average A/C/Z -R3	375.1	- 0.5%	- 0.1%	- 3.6%
	Young Bovines (Z)	371.4	+ 0.4%	- 1.0%	+ 0.4%
	Young Bulls (A)	377.1	- 0.3%	+ 0.7%	- 4.0%
	Steers (C)	383.8	- 0.3%	- 1.2%	- 4.9%
	Cows (D)	275.9	+ 0.8%	+ 3.3%	- 6.7%
	Heifers (E)	381.5	- 0.1%	+ 0.3%	- 2.3%
Live Animals	Male Calves Dairy Type	84.66	- 2.2%	+ 5.3%	- 2.9%
	Male Calves Beef Type	205.1	+ 5.3%	+ 6.2%	+ 5.3%
	Young Store Cattle	2.37	+ 0.7%	+ 3.5%	+ 1.0%
	Yearling Male Store Cattle	2.25	+ 0.7%	+ 2.6%	- 1.3%
	Yearling Female Store Cattle	2.33	- 1.2%	+ 2.5%	+ 0.5%
	Calves slaughtered <8M	520.7	+ 0.2%	- 0.5%	- 4.6%

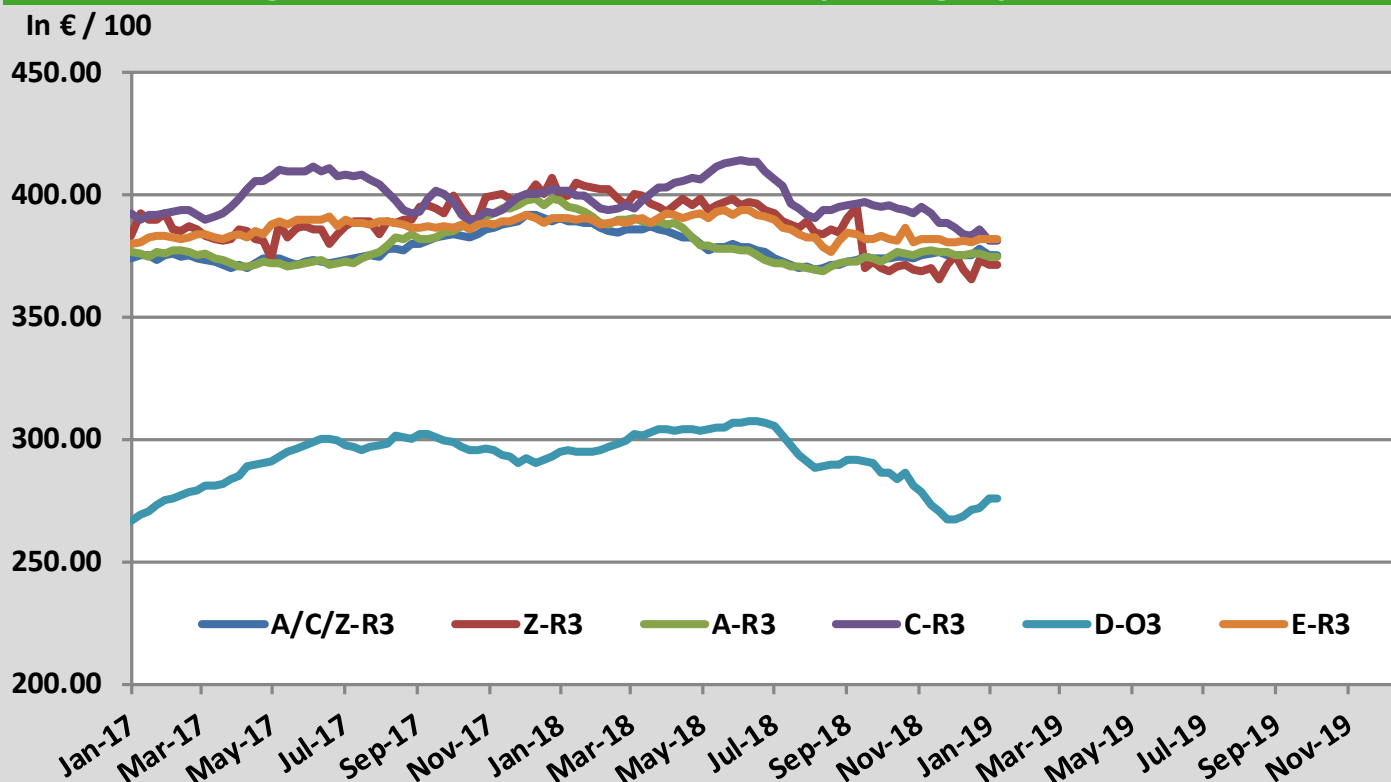
Sources : MSs notifications (Regulation (EC) 1249/2008 and 807/2013)

Average A/C/Z -R3 > Wk.02-2019



Source : MSs notifications (Regulation (EC) 1249/2008)

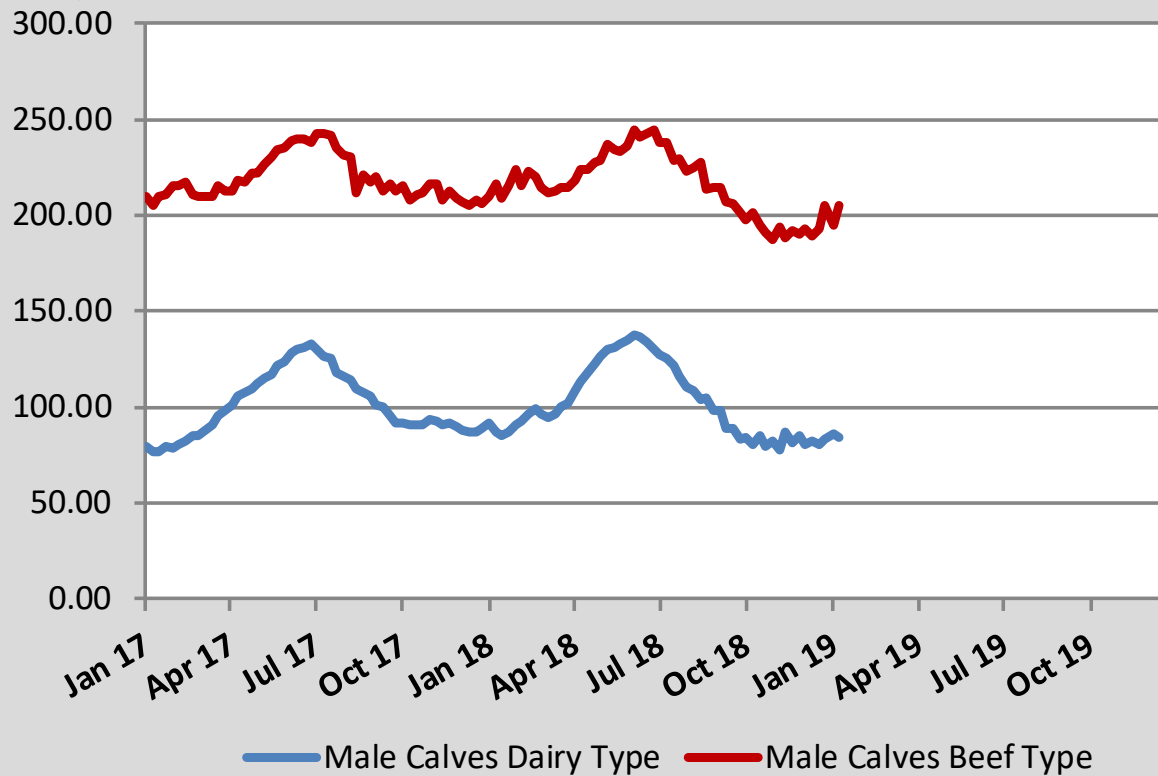
Average EU Bovine Carcasse Price by Category > Wk 2-2019



Source : MSs notifications (Regulation (EC) 1249/2008)

Average Male Calves Prices > Wk.02-2019

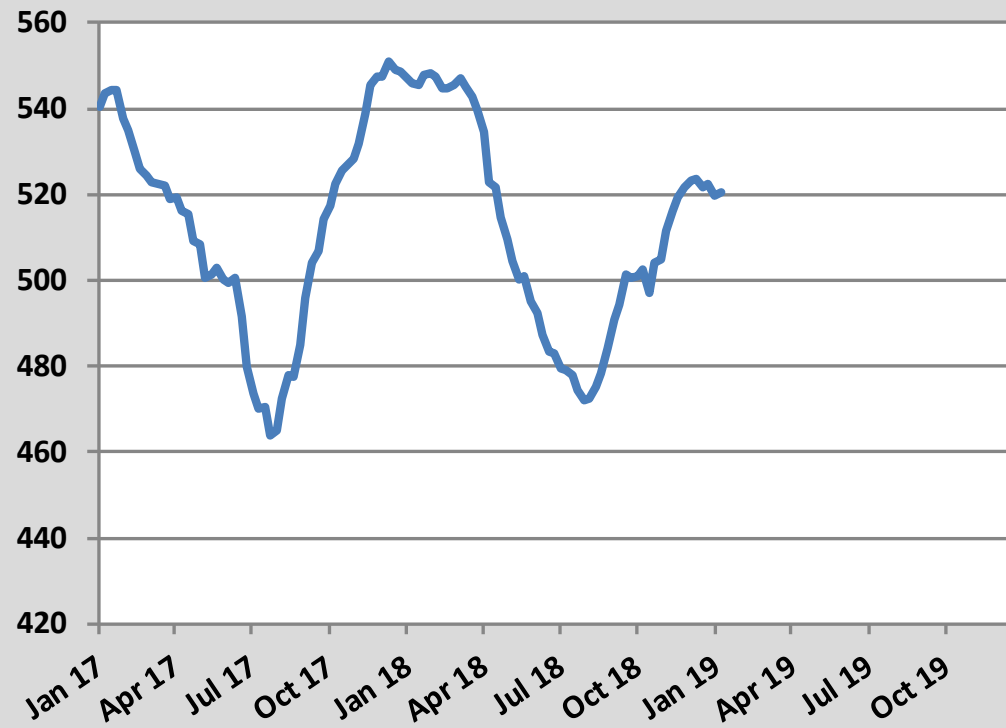
In € / HEAD



Source : MSs notifications (Regulation (EC) 807/2013)

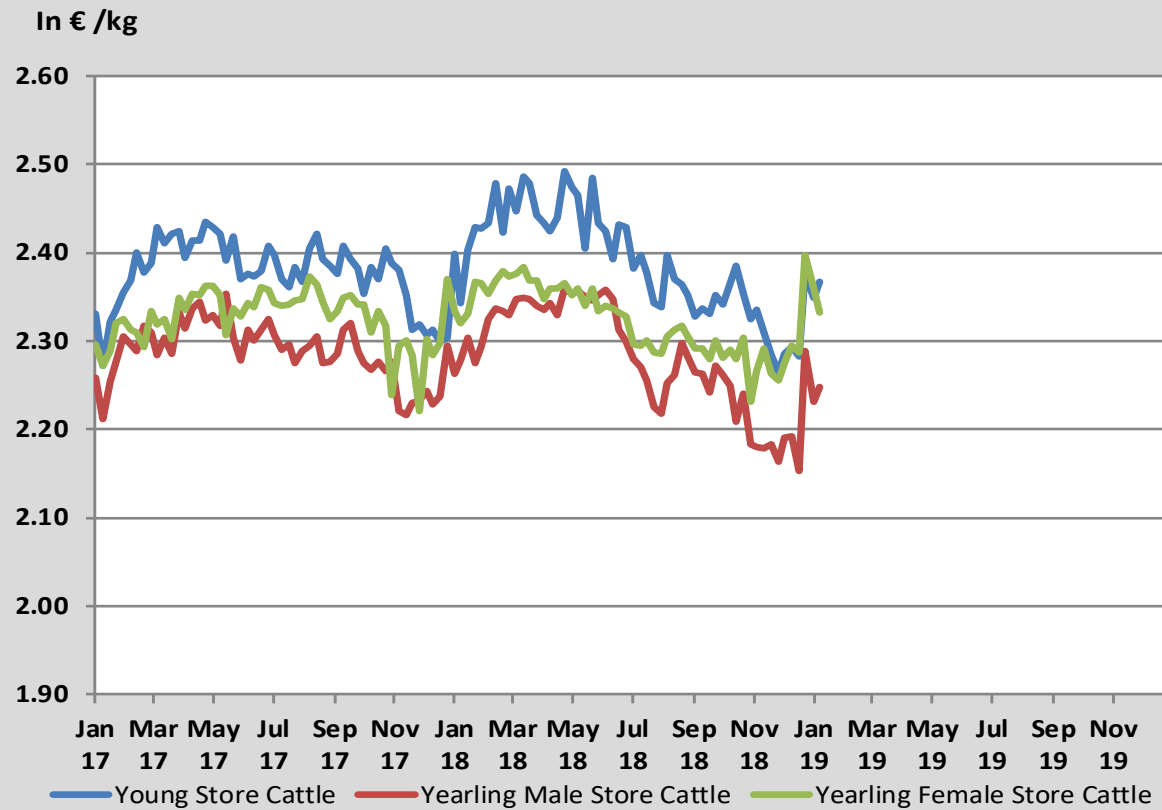
Average Prices of Calves Slaughtered before 8M > Wk.02-2019

In € / 100 kg



Source : MSs notifications (Regulation (EC) 807/2013

Average Store Cattle Prices > Wk.02-2019

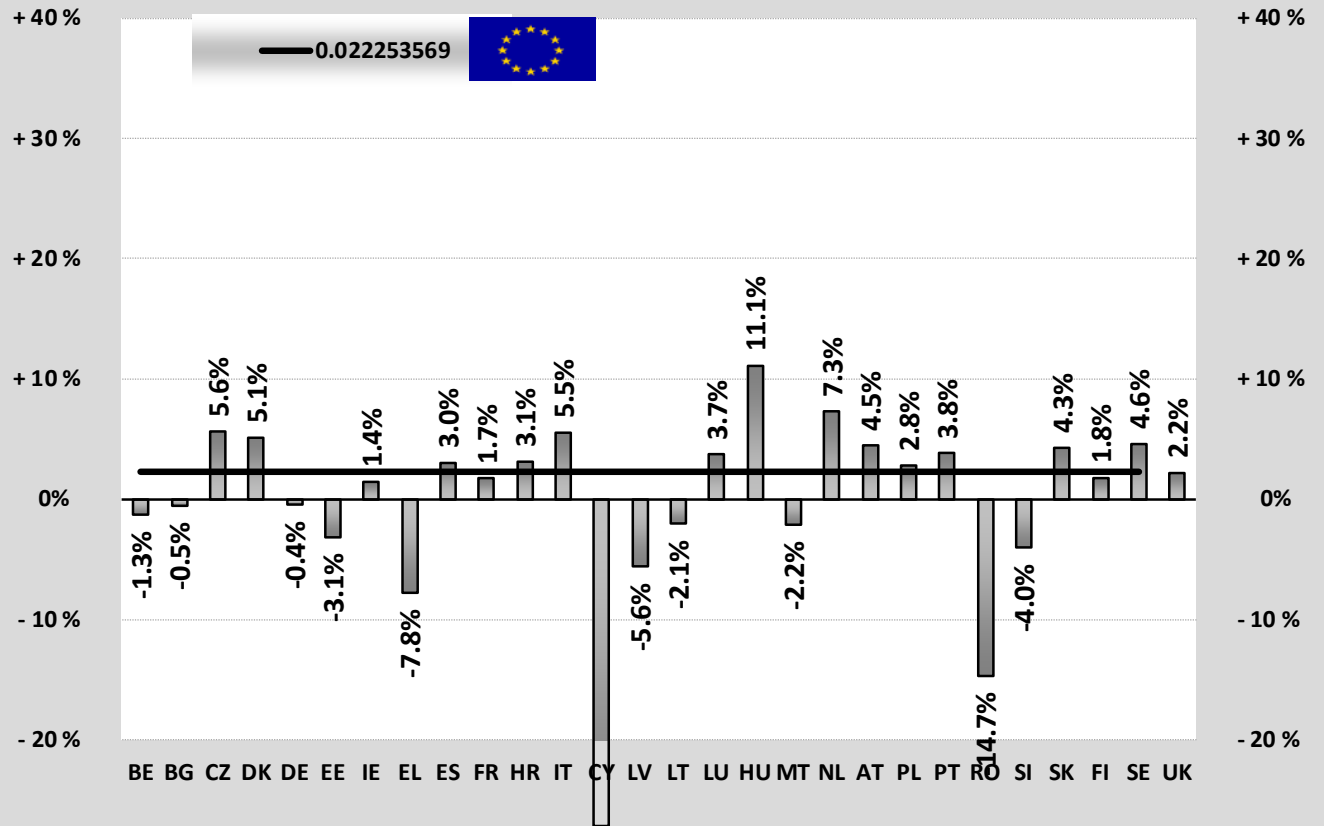


Source : MSs notifications (Regulation (EC) 807/2013)

TONNES	Jan-Oct 17/18	
	EU15	EU28
Bull	+0.2%	+0.7%
Bullock	-2.2%	-2.3%
Cow	+4.5%	+3.8%
Heifer	+8.5%	+7.9%
Calve	+1.2%	+1.1%
Young cattle	-4.7%	-5.2%
Meat of bovine animals	+2.4%	+2.2%

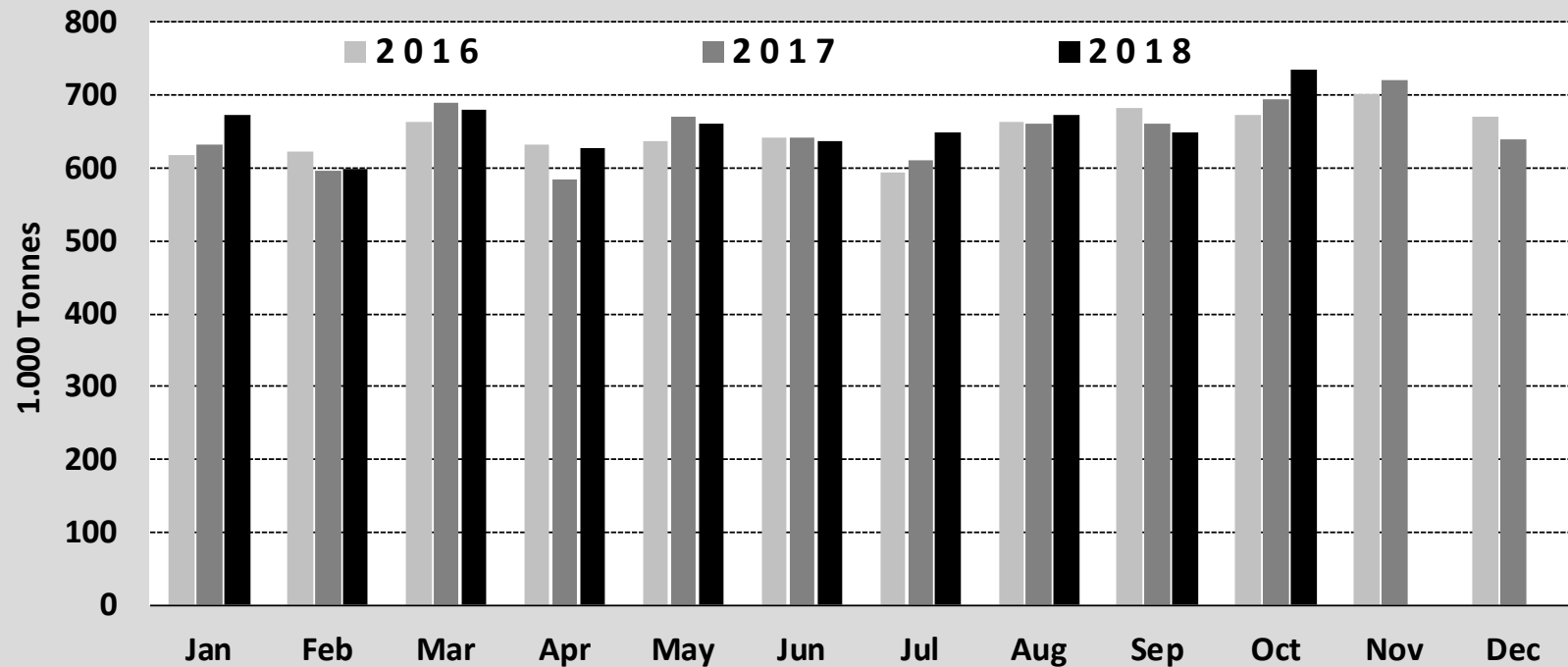
Estimates for last month :

IT



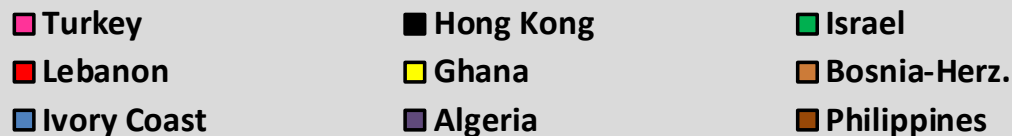
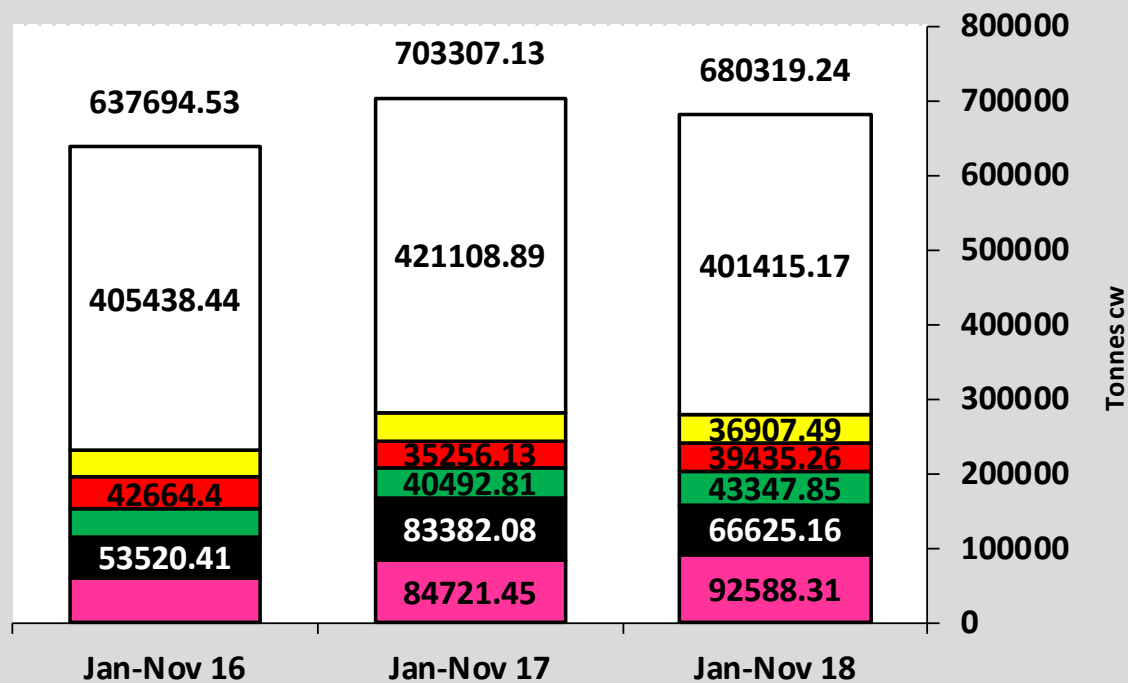
Source : Eurostat

Beef & Veal Production (E28 Slaughtering) - Tonnes



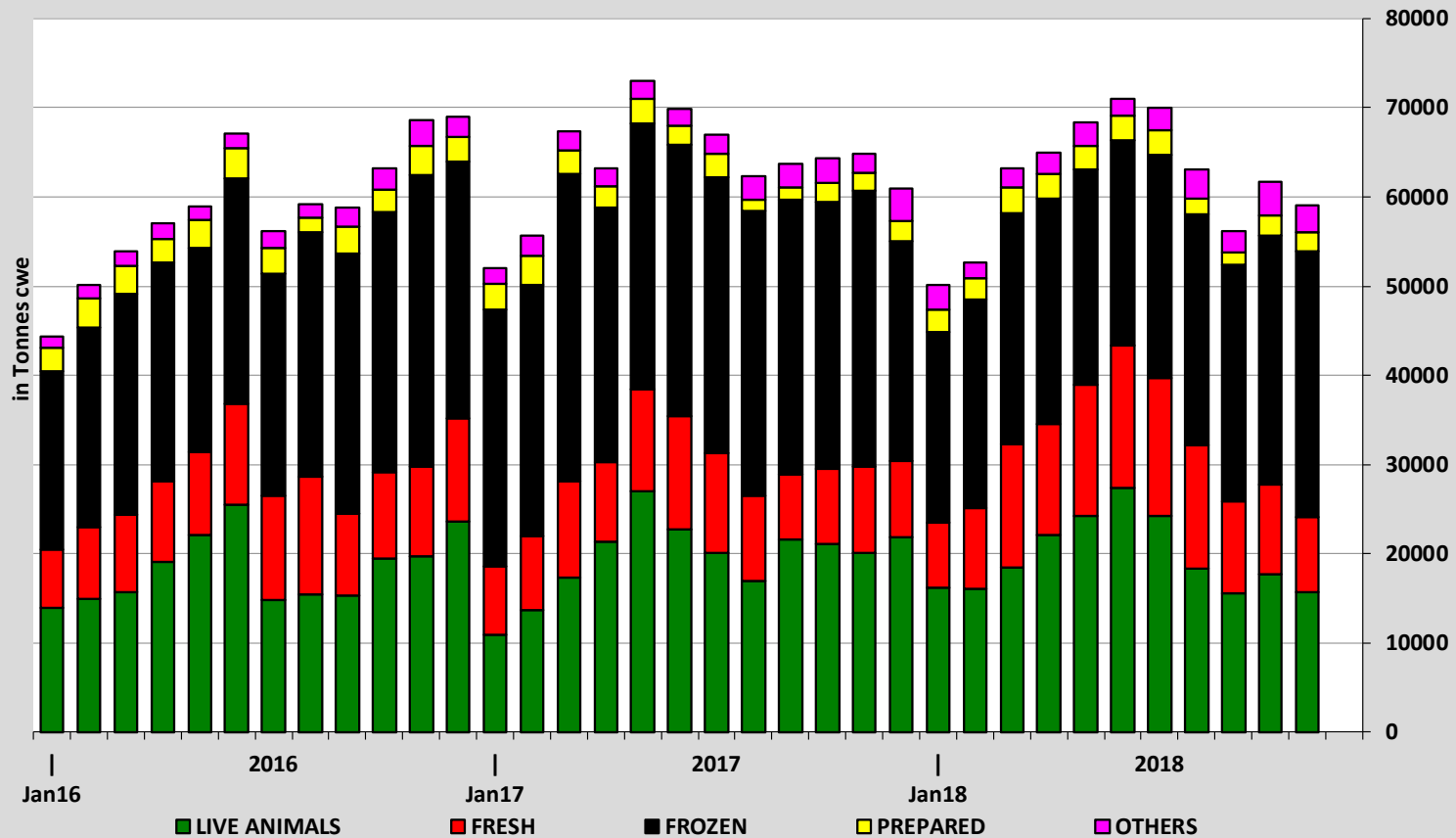
Source : Eurostat

EU EXPORTS of Beef & Veal (Tonnes cwe)



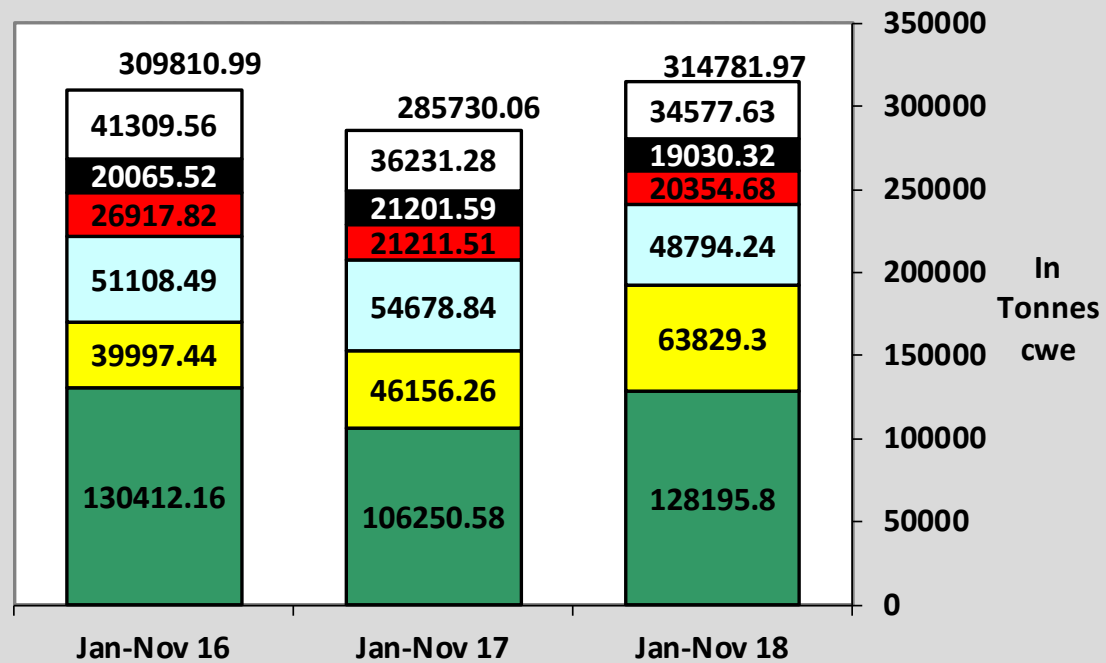
Source : Eurostat - Comext

EU-28 Exports of BEEF products



Source : Eurostat - Comext

IMPORTS of Beef & Veal into EU (Tonnes cwe)

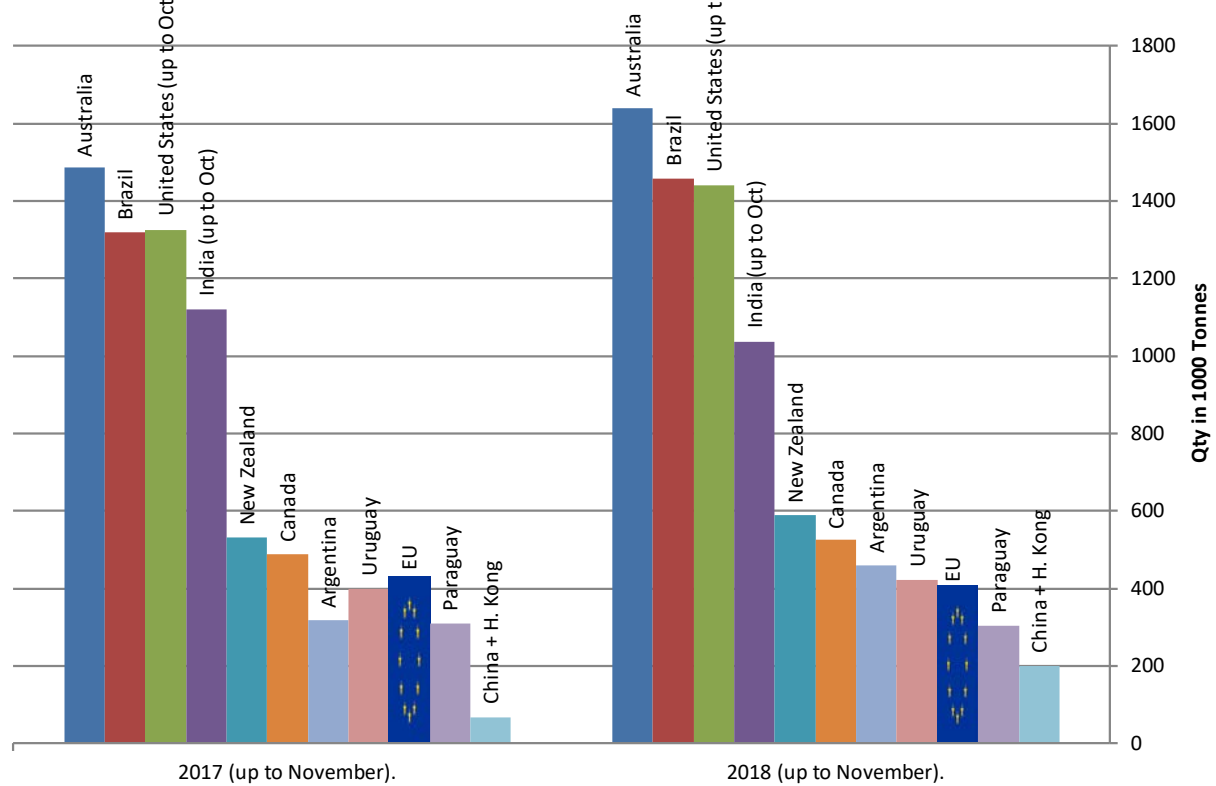


■ Brazil
 ■ Argentina
 ■ Uruguay
 ■ Australia
 ■ USA
 ■ Other Destinations

Source : Eurostat - Comext

Main Exporters of BEEF Products (up to November).

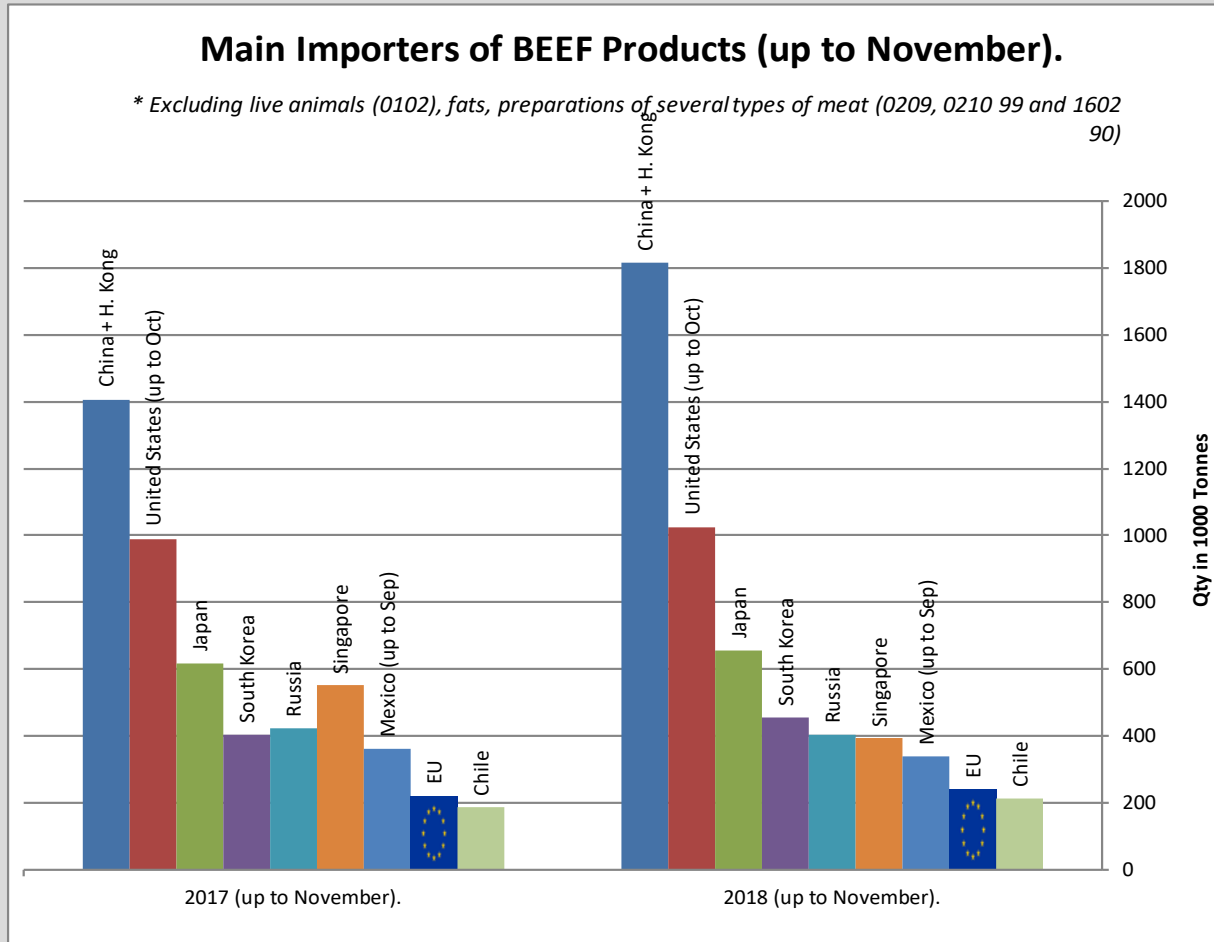
* Excluding live animals (0102), fats, preparations of several types of meat (0209, 0210 99 and 1602 90)



Sources : Global Trade Information Services, Inc. and Eurostat - Comext

Main Importers of BEEF Products (up to November).

* Excluding live animals (0102), fats, preparations of several types of meat (0209, 0210 99 and 1602 90)



Sources : Global Trade Information Services, Inc. and Eurostat - Comext