



## **The Southern African Development Community (SADC) EPA**

- **SADC CONFIGURATION**

The Southern African Development Community consists of 15 members (Madagascar currently suspended). Seven of them are negotiating an EPA with the EU as the SADC EPA Group. These countries are:

Angola, Botswana, Lesotho, Mozambique, Namibia, Swaziland and South Africa
--

- **EPA STATE OF PLAY (AS AT MARCH 2013)**

***Interim EPA negotiations and agreements:***

South Africa initially participated as an observer, but requested the SADC EPA countries to join the negotiation in 2006. The EU accepted it in 2007 on the basis of an amended mandate, which takes into account that South Africa's level of competitiveness and development differs from its neighbours.

At the end of 2007 Botswana, Lesotho, Swaziland, Mozambique (23 November) and Namibia (3 December) agreed and initialled an Interim region-to-region SADC EPA with the EU.

Interim agreement was signed by: Botswana, Lesotho and Swaziland on 4 June 2009  
Mozambique on 15 June 2009.

Namibia has not yet signed. South Africa had decided not to be part of the Interim EPA agreement due to disagreements on some key provisions of the agreement. Angola has not joined the agreement, since they have not presented any market access offer so far.

In the meantime Angola, being a Least Developed Country, maintains duty free market access to the EU under the "*Everything But Arms*" initiative, while EU - South Africa trade is governed by the Trade, Development and Cooperation Agreement (TDCA).

The SADC EPA countries that have signed the Interim EPA agreement, as well as Namibia, Angola and South Africa, have remained committed to continue negotiating for a full EPA.

The EU is committed to concluding negotiations as rapidly as possible with all members of SADC EPA group. Negotiations are ongoing on agricultural market access, rules of origin, some trade disciplines and trade related issues.

More information on state of play of negotiations:

[http://ec.europa.eu/trade/wider-agenda/development/economic-partnerships/negotiations/#\\_sadc](http://ec.europa.eu/trade/wider-agenda/development/economic-partnerships/negotiations/#_sadc)

- **IMPORTANCE OF AGRICULTURE IN SADC REGION**

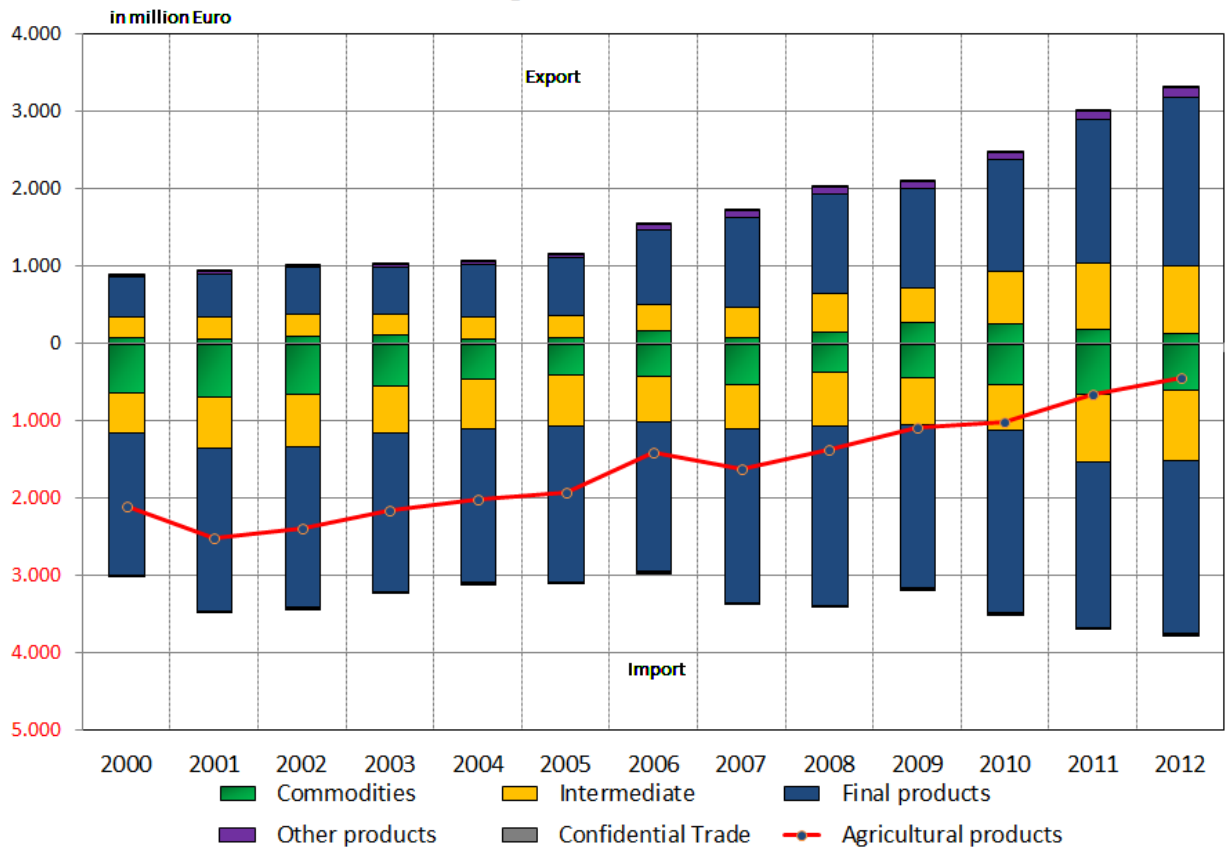
Country	Population (millions)	GNI per capita Atlas (\$)	Value added, agriculture (% of GDP)
Angola	19.1	3940	10
Botswana	2.0	6790	3
Lesotho	2.2	1040	8
Mozambique	23.4	440	32
Namibia	2.3	4510	8
South Africa	50.0	6090	3
Swaziland	1.1	2950	7

Source: The Little Data Book 2012. The World Bank

- **AGRICULTURE TRADE**

# EU27 Agricultural trade with SADC

Source: COMEXT



Agriculture  
and Rural  
Development