

CAP post-2013: Key graphs & figures

Graph 3

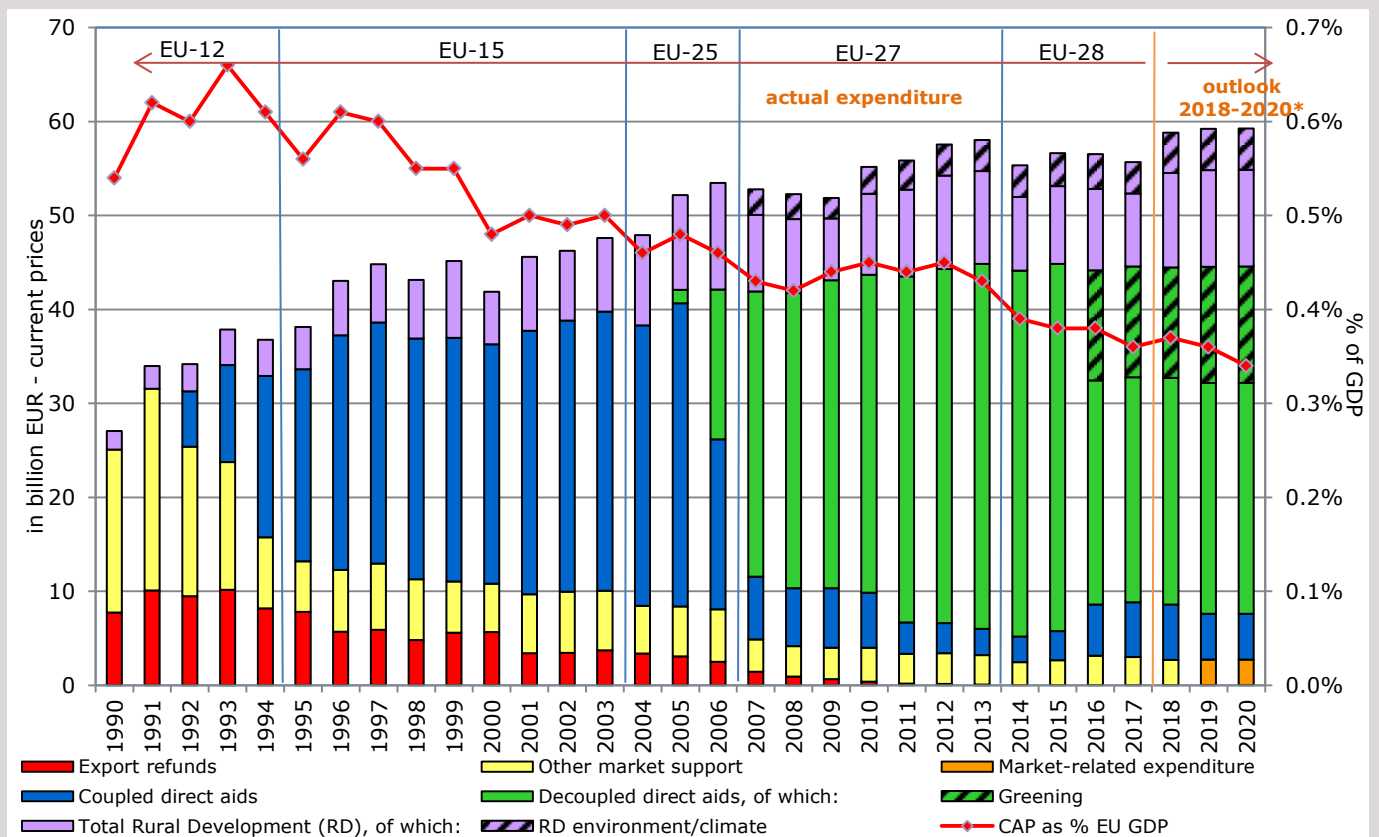
April 2018

CAP expenditure and CAP reform path post-2013

This graph shows the evolution of CAP expenditure since 1990 and includes the funds allocated to the CAP under the multiannual financial framework (MFF) from 2014-2020.

- With the CAP reform post-2013, the new direct payments include compulsory schemes and voluntary schemes, depending on the choice of the Member States.
- The focus on environmental sustainability is shown by the fact that the new Greening payment accounts for 30% of direct aids to farmers and that at least 30% of the Rural Development envelope must be reserved for environmental/climate related actions.
- Market support includes expenditure for wine programmes, producer organisations in the fruit and vegetables sector, the school fruit and milk schemes, promotion, beekeeping, etc.

CAP expenditure and CAP Reform path (current prices)



*) 2018: budget amounts; 2019-2020: Annex III Regulation 1307/2013 broken down based on notifications by August 2017 and January 2018, coupled direct payments including POSEI and SAI direct payment component and Annex I Regulation 1305/2013

Sources: CAP expenditure for past years: European Commission, DG Agriculture and Rural Development (Financial Report). GDP: Eurostat and Global Insight.