



European  
Commission

# **CAP CONTEXT INDICATORS**

## **2014-2020**

### **35. FARMLAND BIRDS INDEX**

2016 update

## CONTEXT INDICATOR 35: FARMLAND BIRDS INDEX

**The population of farmland birds in Europe and in most of the Member States is still declining, although at a slower pace than in the decade 1990-2000**

The farmland bird indicator is intended as a barometer of change for the biodiversity of agricultural land in Europe. Assuming a close link between the selected bird species and the farmland habitat, a negative trend signals that the farmed environment is becoming less favourable to birds and, by extension, to agricultural biodiversity in general.

In this chapter reference is made to the Pan European Common Bird Monitoring Scheme (PECBMS). Where more recent data are available, reference is made to national indices as they have been delivered to the PECBMS coordination team by countries. The main difference between the common Farmland Bird Index (FBI) and national indices concerns the number and type of species monitored, ranging from 8 to 39, and the calculation method<sup>1</sup>.

At EU level<sup>2</sup>, the decline registered from 1990 to 2010 continued also between 2010 and 2013 at a more stable pace, with a reduction of 2.9 points over the last four years. Since 2000, the downward trend seems to have slowed down compared to the previous period (-15.6 points from 2000 to 2013 compared to -22.8 points from 1990 to 2000). However, the annual average change remained the same (-1.63) between 1990-2000 and 2000-2013.

**Latvia shows an increasing trend in farmland birds**

Most Member States witnessed the same decline in farmland bird populations, although there are differences in the pace of the decline and the rate of change. Some countries like the Netherlands, Denmark, Spain, Italy and the United Kingdom report a steady decline while other countries like the Czech Republic, Belgium, Latvia and Estonia show frequent fluctuations that still result in a quite stable trend. Between 2000 and 2013 some countries registered a decline of more than 20 points: Belgium (-31.7), the Czech Republic (-22.9), Denmark (-21.9), France (-20.2), the Netherlands (-26.3), Austria (-34.9), and Finland (-26.4).

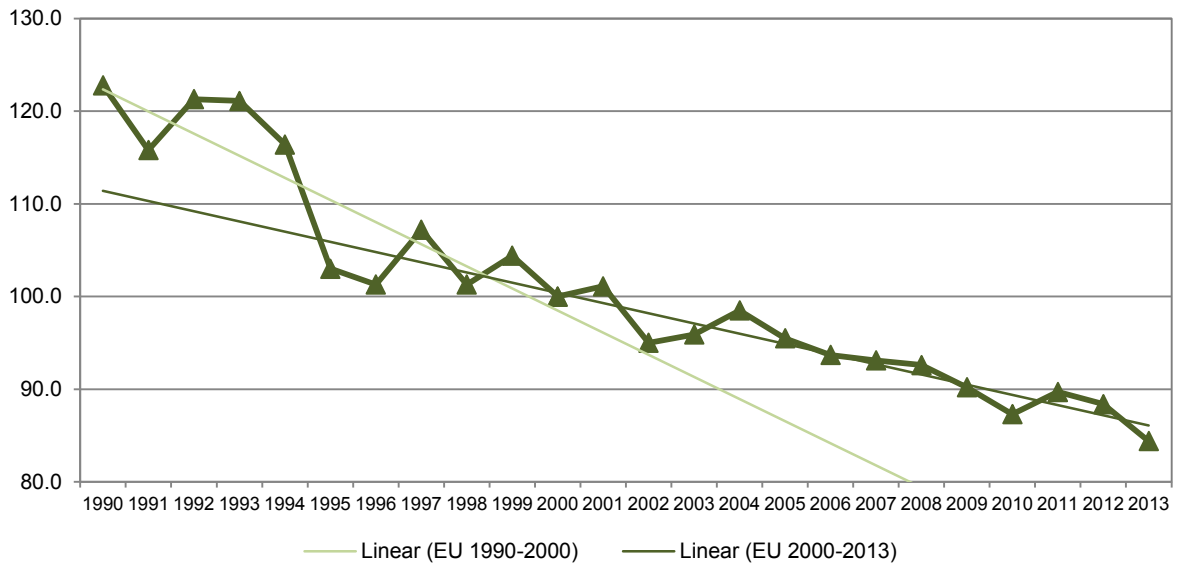
Only Latvia shows an increase of 11.5 points between 2000 and 2013.

---

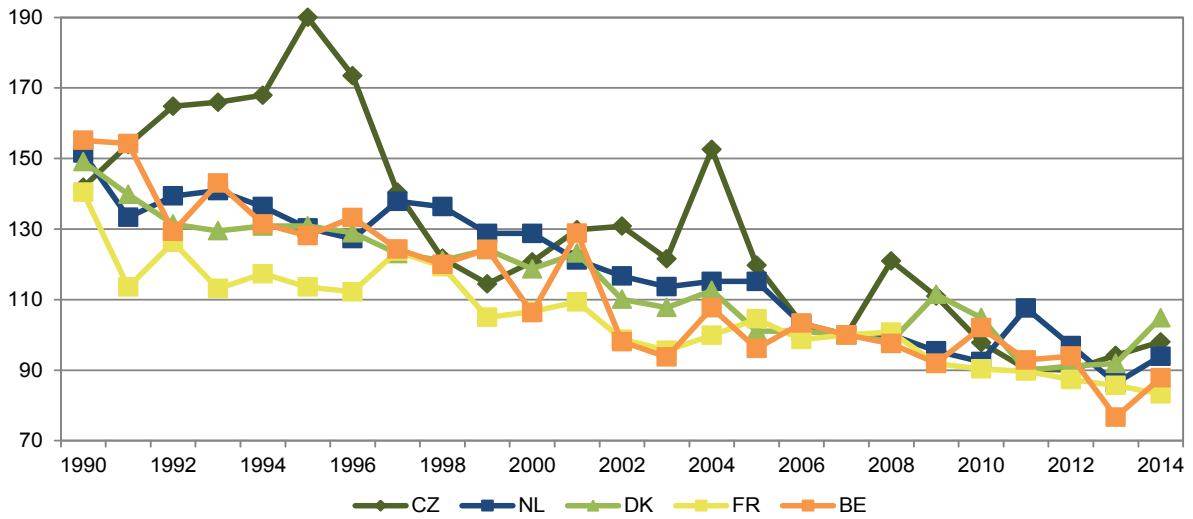
<sup>1</sup> See also methodological box at the end of the text.

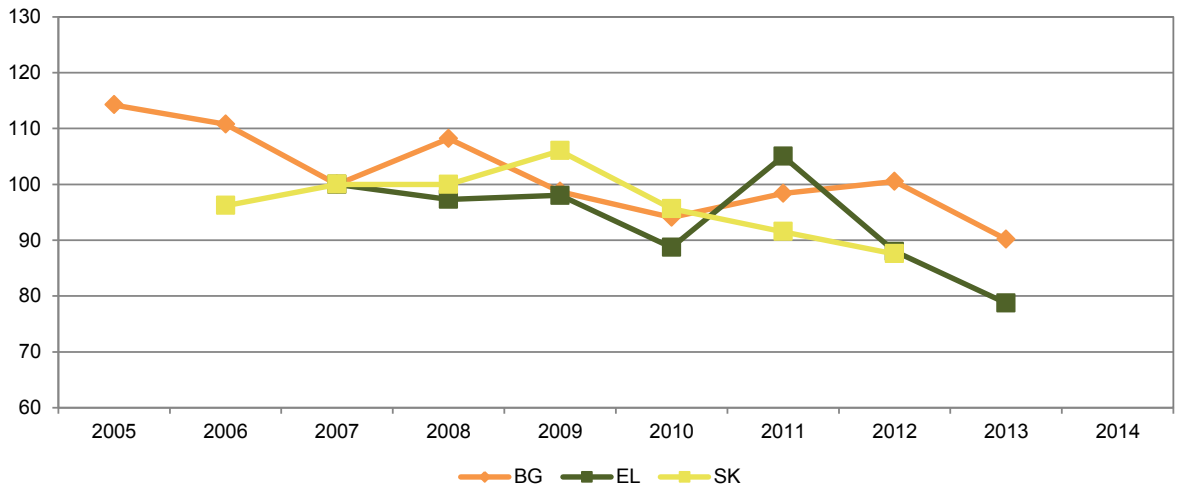
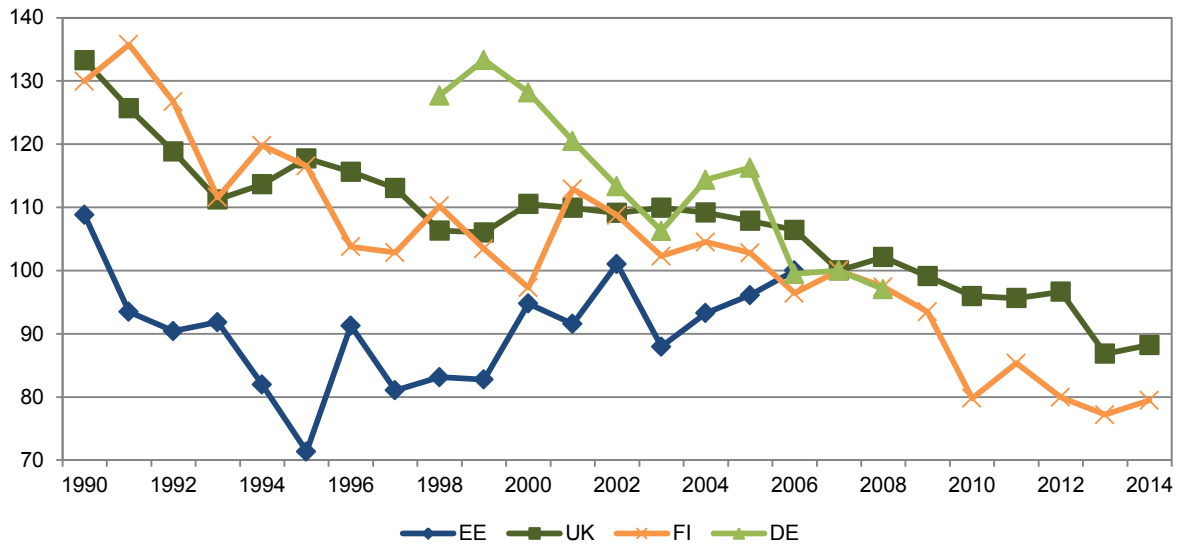
<sup>2</sup> The EU aggregate figure is an estimate based on the Member States for which data are available from Eurostat in the reference year.

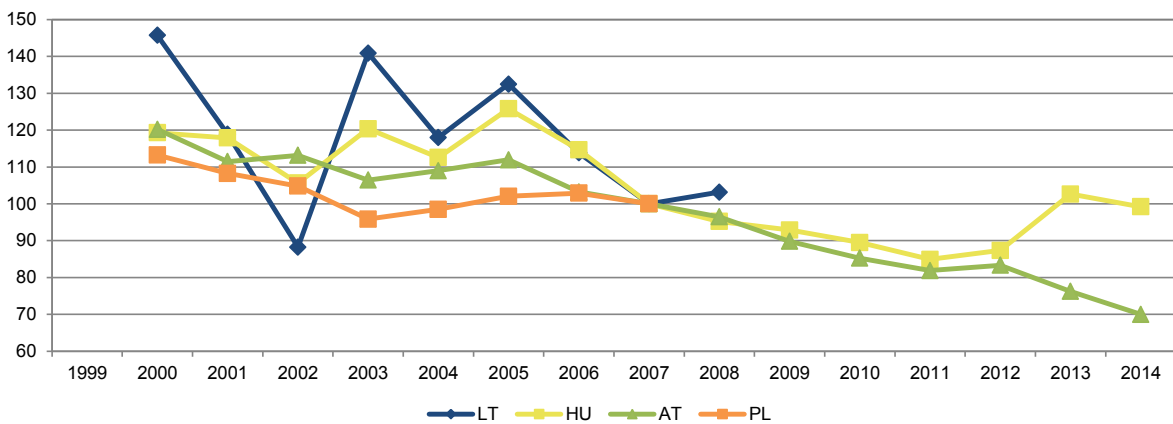
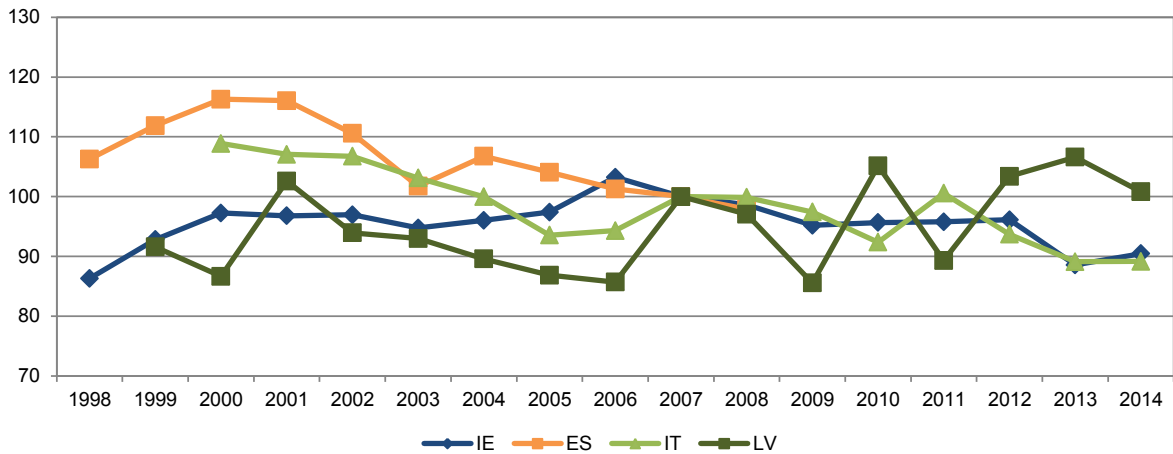
**Graph 1 - Population trends of farmland birds in the European Union (2000 = 100), 1990-2013**



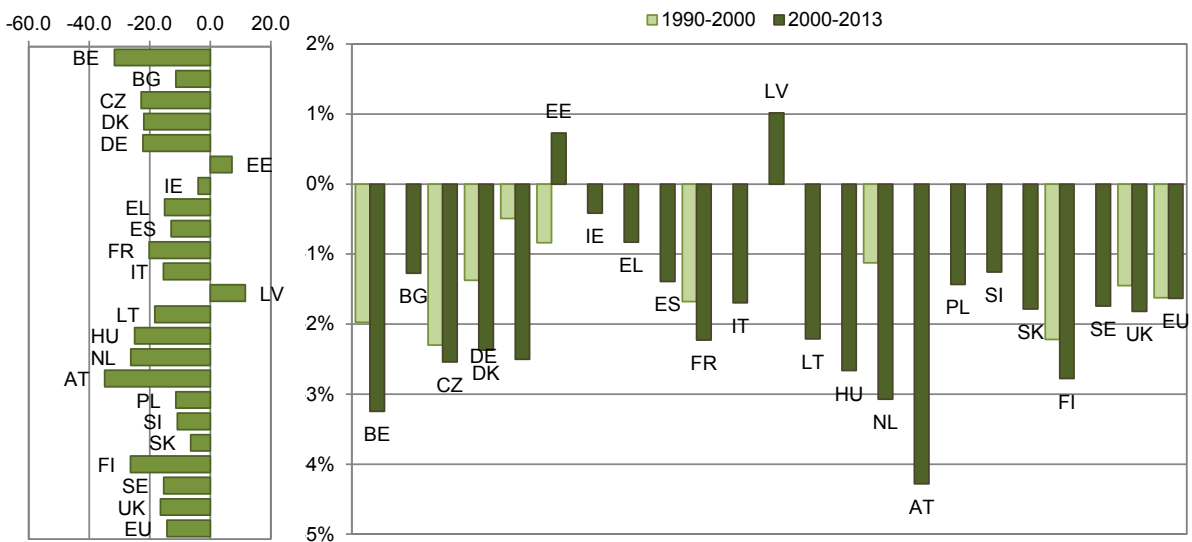
**Graph 2 - Population trends of farmland birds in groups of Member States (2007 = 100), 1990-2014**







**Graph 3 – Change in FBI, 2000 to 2013, and annual average change in the Farmland Bird Index, 1990-2000 and 2000-2013**



Note: Only Member States for which relevant data are available are shown. 1) The annual average change is calculated on 3-year average in order to reduce the distortion due to annual fluctuations (for 2000: 2000/2002, for 2013: 2012/2014). The reference period is different in some MSs: BG (2006-2013), DE (2000-2007), EL (2008-2012), ES (2000-2007), IT (2001-2013), CY (2007-2013), PL (2001-2013), SI (2009-2013), SK (2006-2012), EU (2000-2012). 2) The annual average change is calculated on 3-year average in order to reduce the distortion due to annual fluctuations (for 1990: 1990/1992, for 2000: 1998/2000, for 2013: 2012/2014). For the class (2000-2013) the reference period is different for some MSs: BG (2006-2013), DE (2000-2007), EL (2008-2012), ES (2000-2007), IT (2001-2013), CY (2007-2013), PL (2001-2013), SI (2009-2013), SK (2006-2012), EU (2000-2012).

**Table 1 - Population of farmland birds**

Indicator	C.35 Farmland birds index (FBI)					
Measurement	Trends of index of population of farmland birds (2000 = 100)					
Source	EU: Eurostat, MS level: National Index from countries via PECBM (for DE, ES: Eurostat) PECBM (Pan-European Common Bird Monitoring) and national programmes					
Year	2009	2010	2011	2012	2013	2014
Unit	Index (2000 = 100)					
Country						
Belgium	86.5	96.0	87.4	88.4	72.1	82.6
Bulgaria	86.4	82.3	86.1	88.0	78.9	:
Czech Republic	91.9	81.0	74.8	74.6	78.0	81.2
Denmark	93.9	88.4	75.8	76.8	77.4	88.3
Germany	:	:	:	:	:	:
Estonia	:	:	:	:	:	:
Ireland	97.9	98.4	98.5	98.8	91.1	93.0
Greece	98.1	88.7	105.1	88.0	78.8	:
Spain	:	:	:	:	:	:
France	86.1	84.7	84.2	81.9	80.3	78.1
Croatia	:	:	:	:	:	:
Italy	89.5	84.8	92.4	86.1	81.8	81.9
Cyprus	:	:	:	:	:	:
Latvia	98.7	121.3	103.1	119.3	123.0	116.3
Lithuania	77.7	83.1	74.9	69.7	72.2	78.0
Luxembourg	:	:	:	:	:	:
Hungary	77.9	75.0	71.2	73.2	86.0	83.2
Malta	:	:	:	:	:	:
Netherlands	74.1	71.8	83.5	75.3	67.1	72.9
Austria	74.7	70.9	68.1	69.3	63.4	58.2
Poland	93.7	87.8	87.2	84.5	85.1	84.4
Portugal	:	:	:	:	:	:
Romania	:	:	:	:	:	:
Slovenia	95.1	80.7	82.9	84.7	79.3	79.0
Slovakia	108.9	98.2	94.0	90.0	:	:
Finland	96.1	82.0	87.7	82.2	79.3	81.7
Sweden	80.7	86.1	80.4	77.2	82.2	80.4
United Kingdom	89.7	86.8	86.5	87.4	78.6	79.8
EU	90.2	87.3	89.7	88.4	84.4	:
EU-15	n.a.	n.a.	n.a.	n.a.	n.a.	n.a.
EU-N13	n.a.	n.a.	n.a.	n.a.	n.a.	n.a.

Notes: The EU aggregate figure is an estimate based on the MSs for which data are available from Eurostat in the reference year.

Note: The EU aggregate figure is an estimate based on the Member States for which data are available from Eurostat in the reference year.

Context indicator	35 – Farmland birds index
Comments on methodology and data	Last update done in 2015; no more recent data available.