



EU rice trade 2012/13

DG AGRI C.5

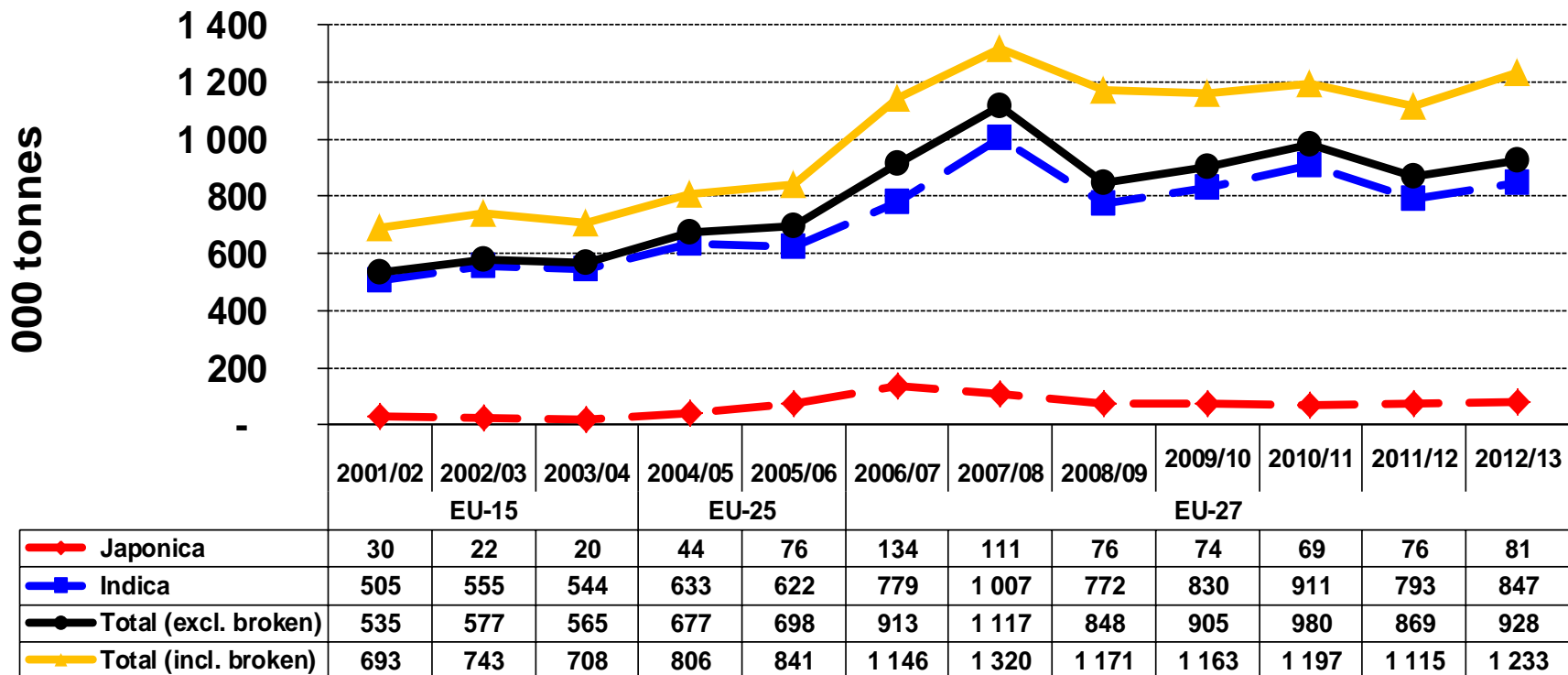
**Management Committee for the Common
Organisation of Agricultural Markets / Rice**

24/10/2013



Actual trade (Customs data)

EXTERNAL TRADE - IMPORTS (milled basis, Eurostat data)



Rice imports per origin

(2012/13, milled basis, broken rice incl.)

■ India

■ Cambodia

■ Thailand

■ Egypt

■ Pakistan

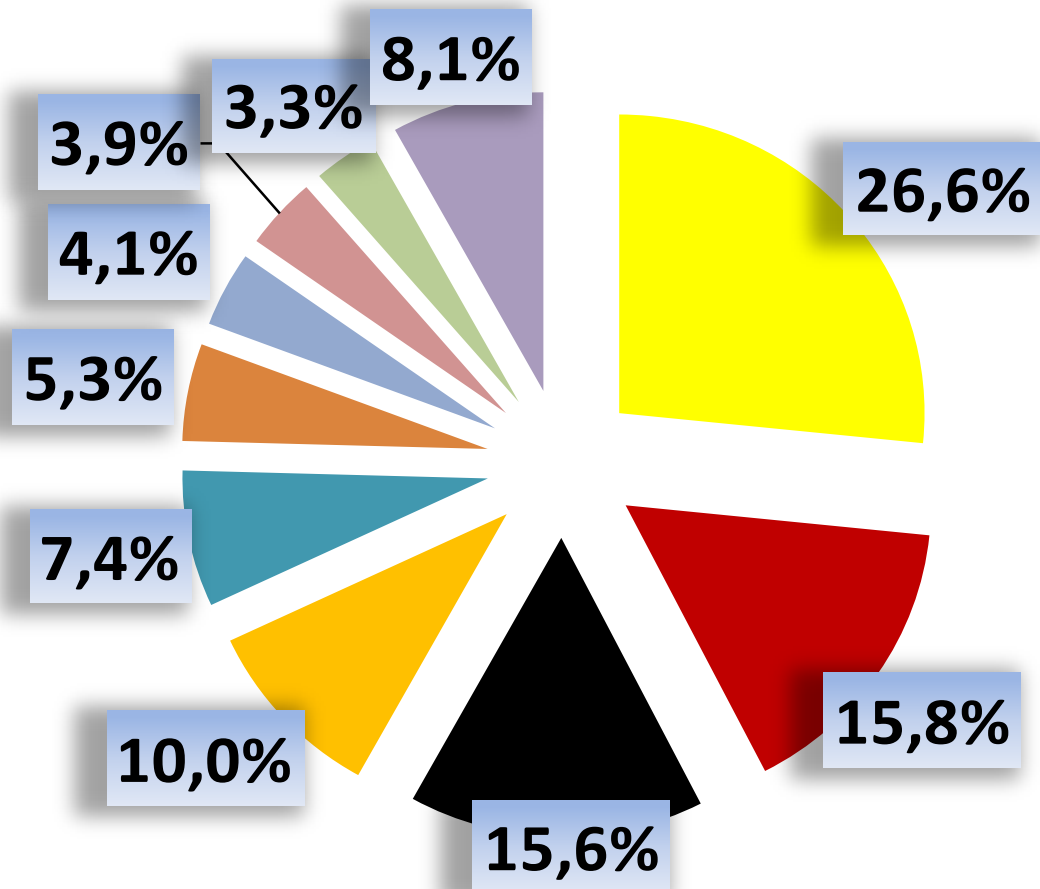
■ Uruguay

■ United States

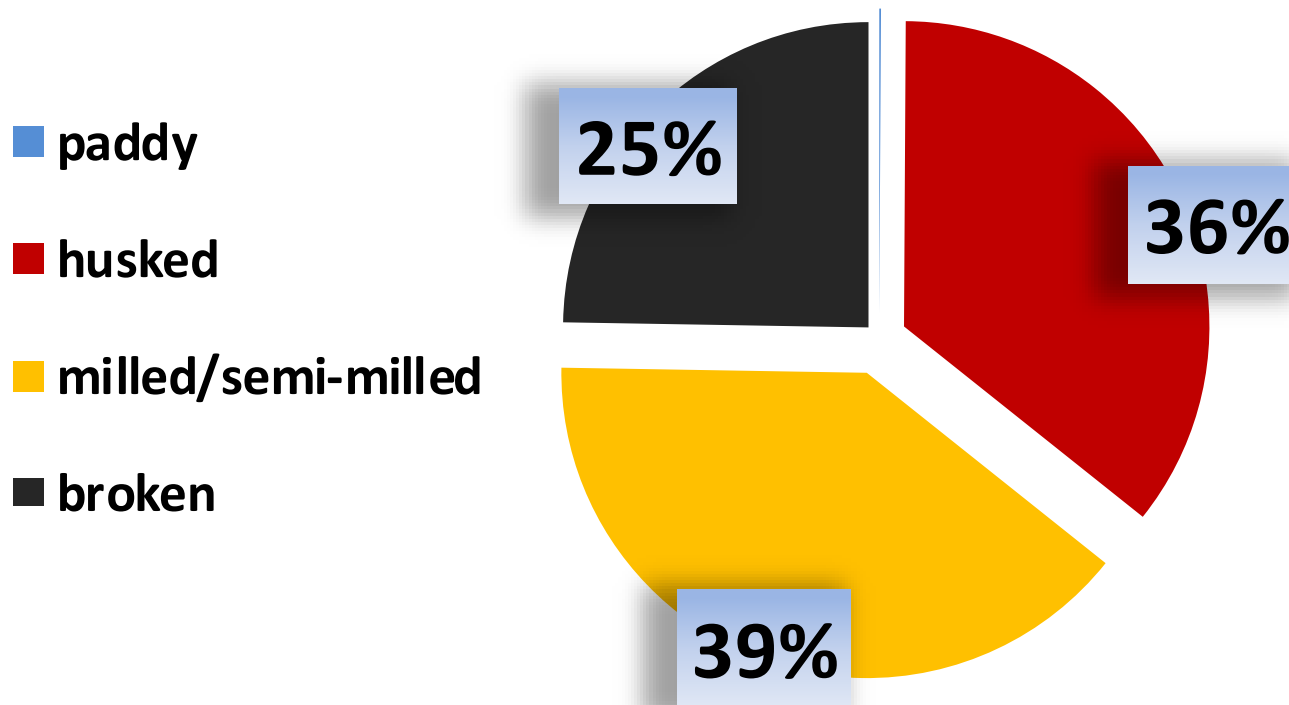
■ Vietnam

■ Guyana

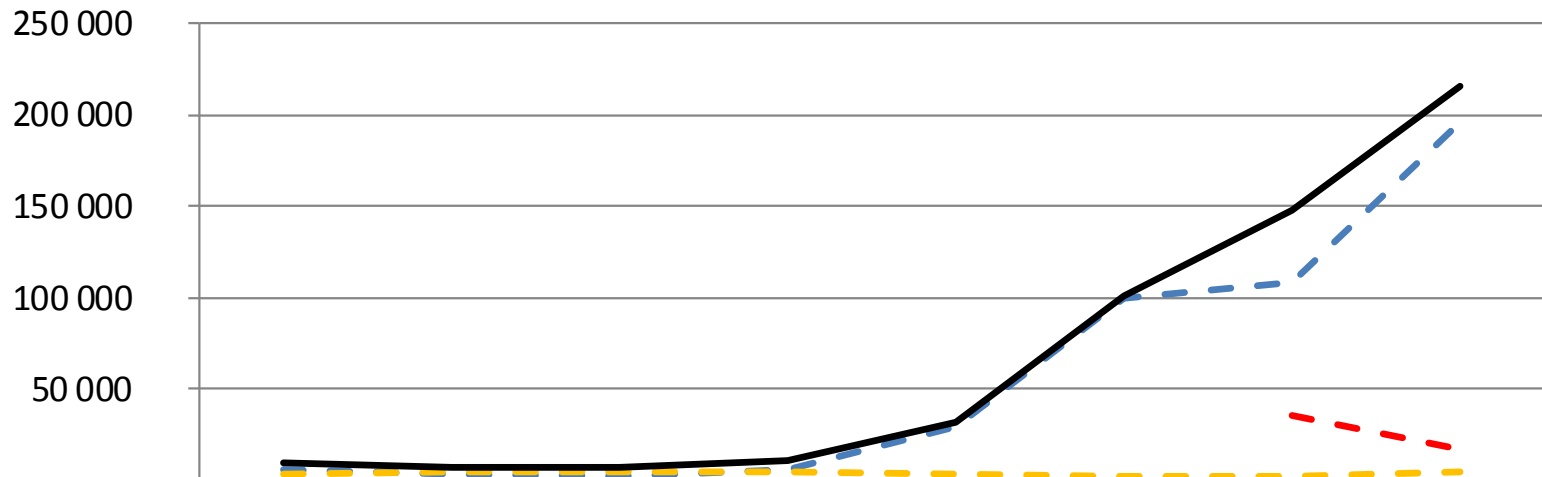
■ other



Rice imports per type (2012/13, milled basis)



EBA rice exports to the EU (in t, milled basis, broken rice included)



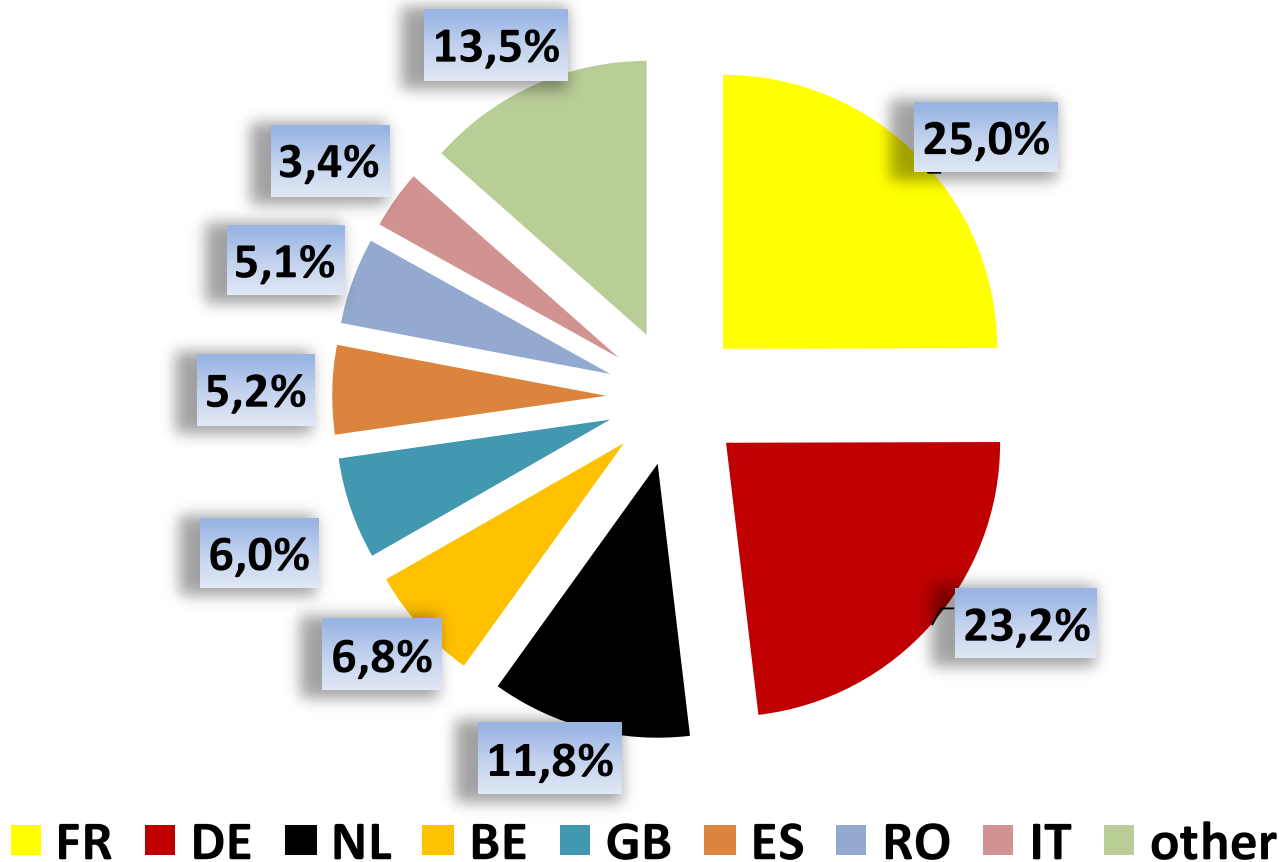
	2005-06	2006-07	2007-08	2008-09	2009-10	2010-11	2011-12	2012-13
— • Cambodia	5 915	2 809	1 987	6 012	28 617	98 986	108 784	195 544
- - • Myanmar							35 938	16 420
- - • other	3 628	4 414	4 898	4 268	2 940	2 362	2 321	3 972
— Grand Total	9 542	7 223	6 885	10 280	31 557	101 348	147 044	215 936

*EBA rice exports to the EU: Type of rice
(milled basis, in tonnes)*

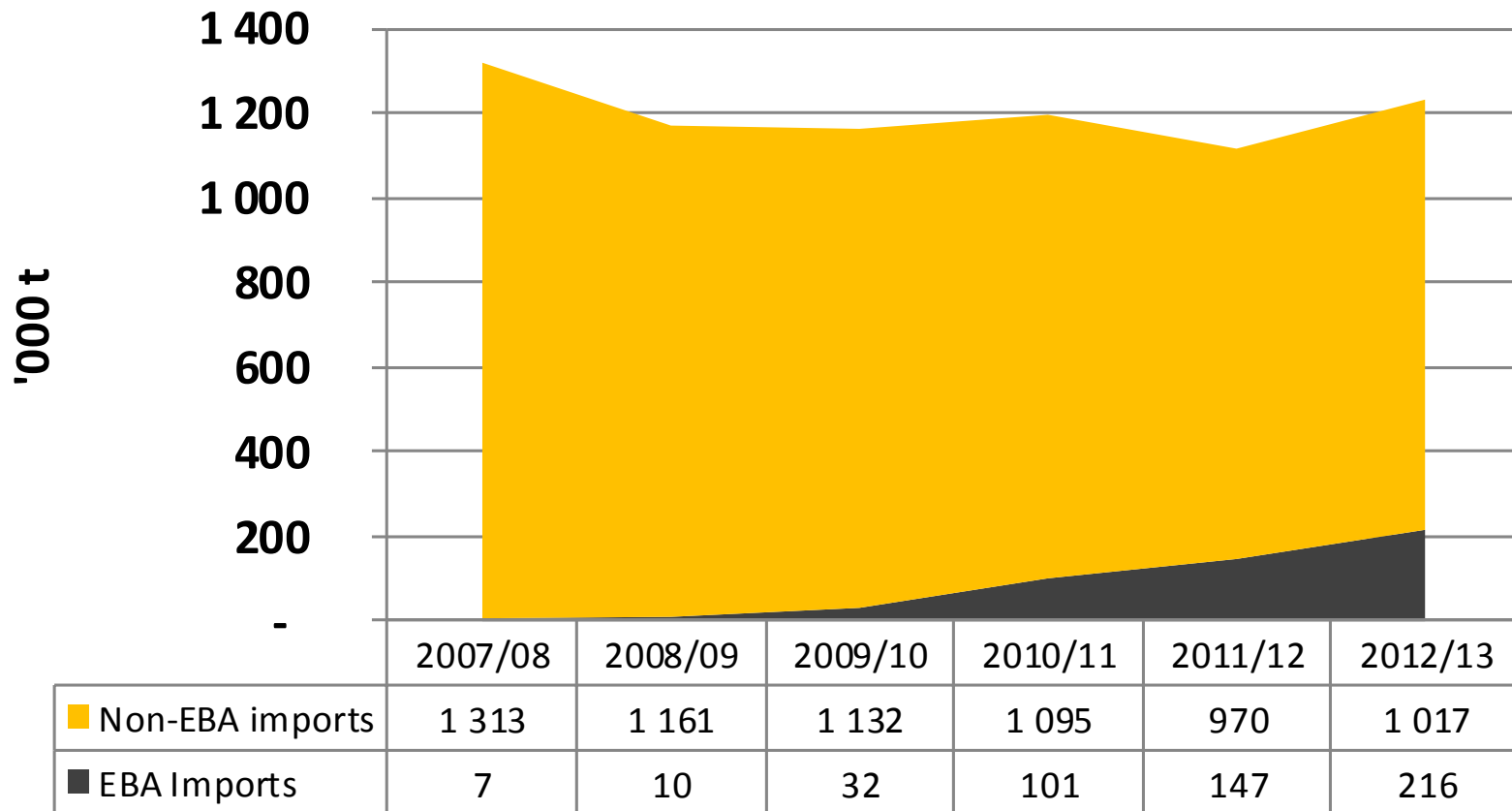
	2005-06	2006-07	2007-08	2008-09	2009-10	2010-11	2011-12	2012-13
paddy	294	6	23	1	12	33	0	2
husked	3 410	2 548	2 517	2 030	595	433	36	453
semi-milled	217	494	480	759	273	149	520	481
milled	4 805	3 816	3 704	6 926	30 607	92 848	100 242	189 024
broken	816	360	160	564	70	7 886	46 245	25 975
Grand Total	9 542	7 223	6 885	10 280	31 557	101 348	147 044	215 936

EBA exports to EU: MS shares

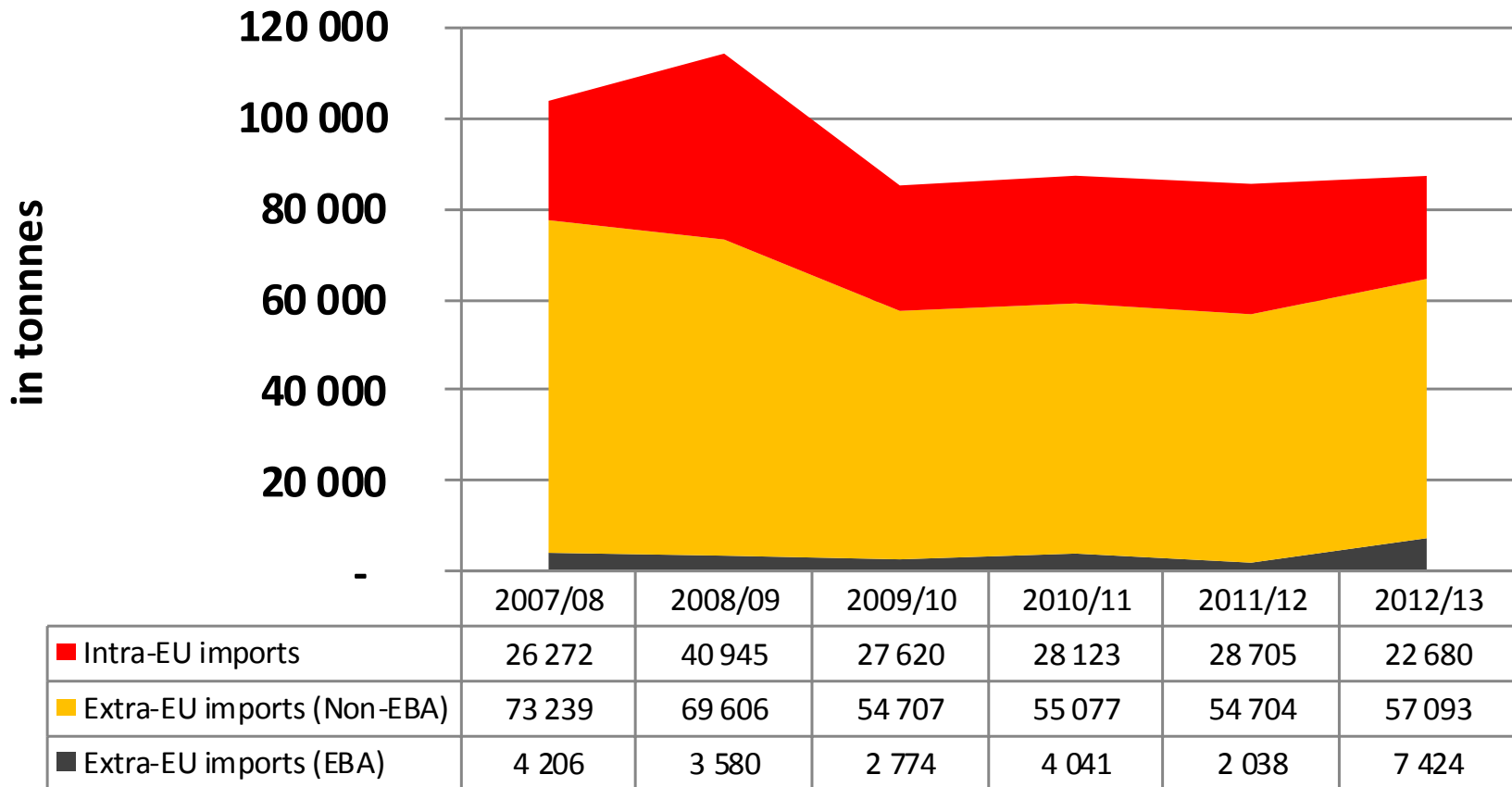
(2012/13, milled basis, broken rice included)



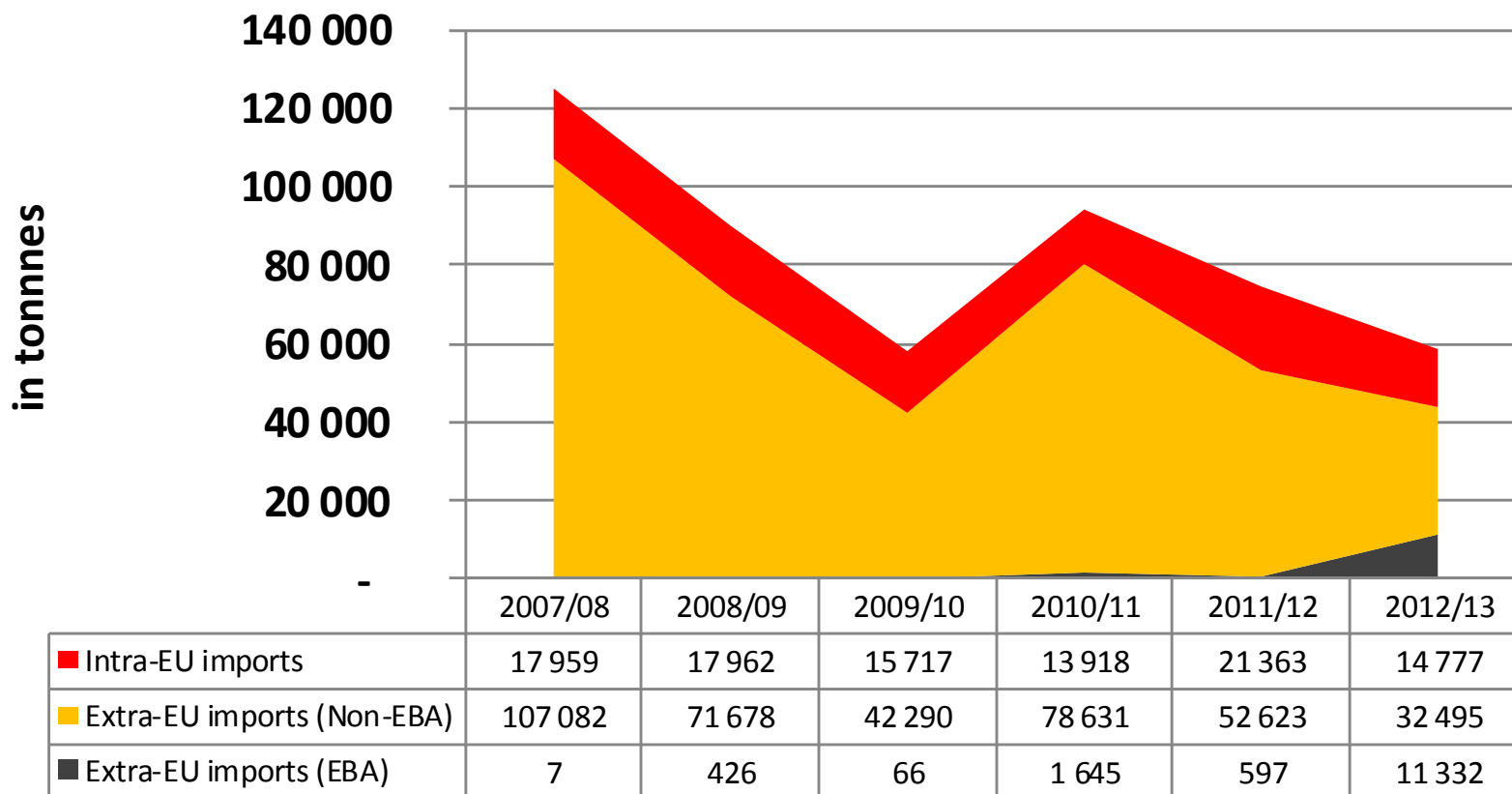
Rice imports - EU27



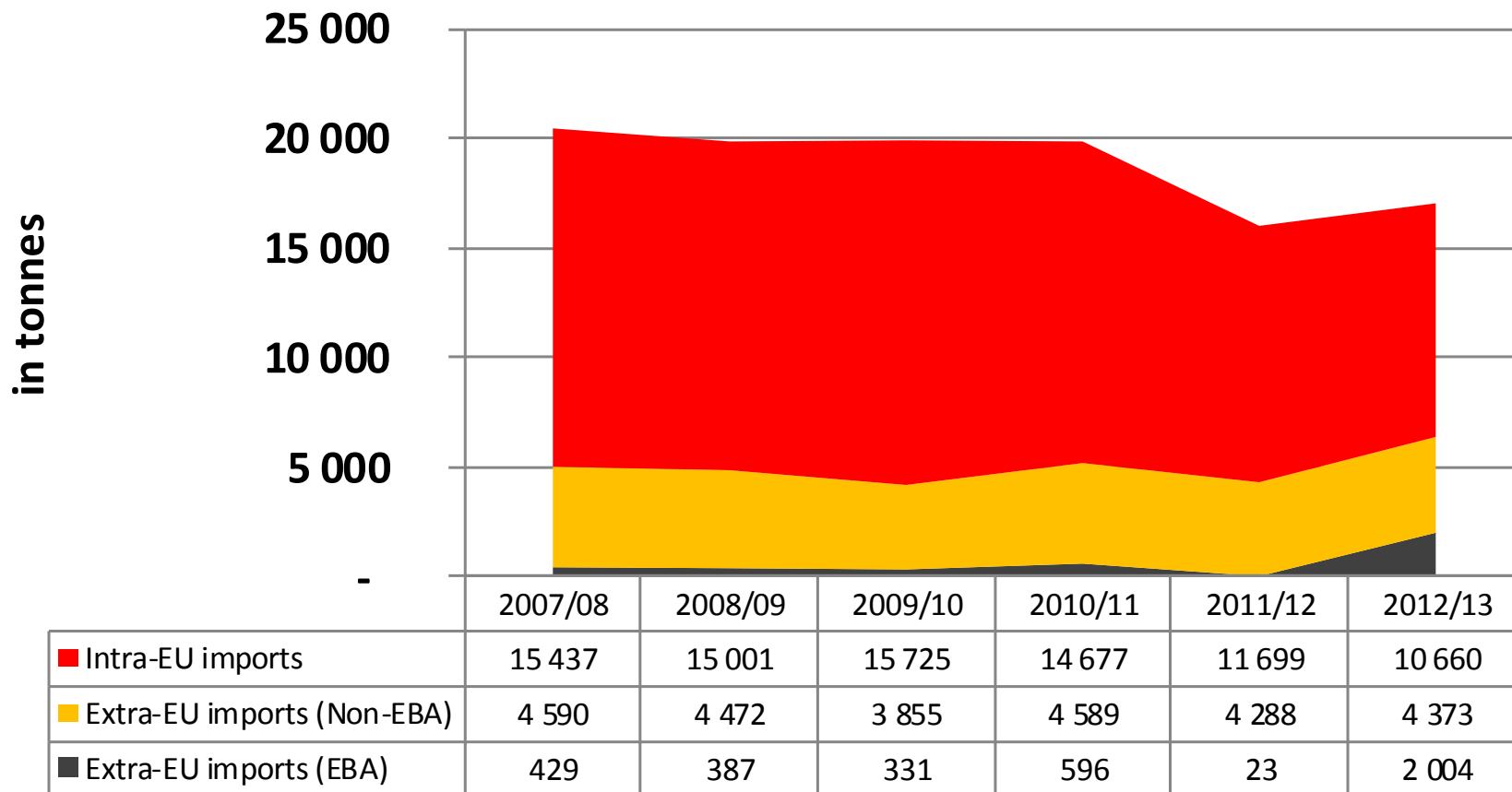
Rice imports - Italy



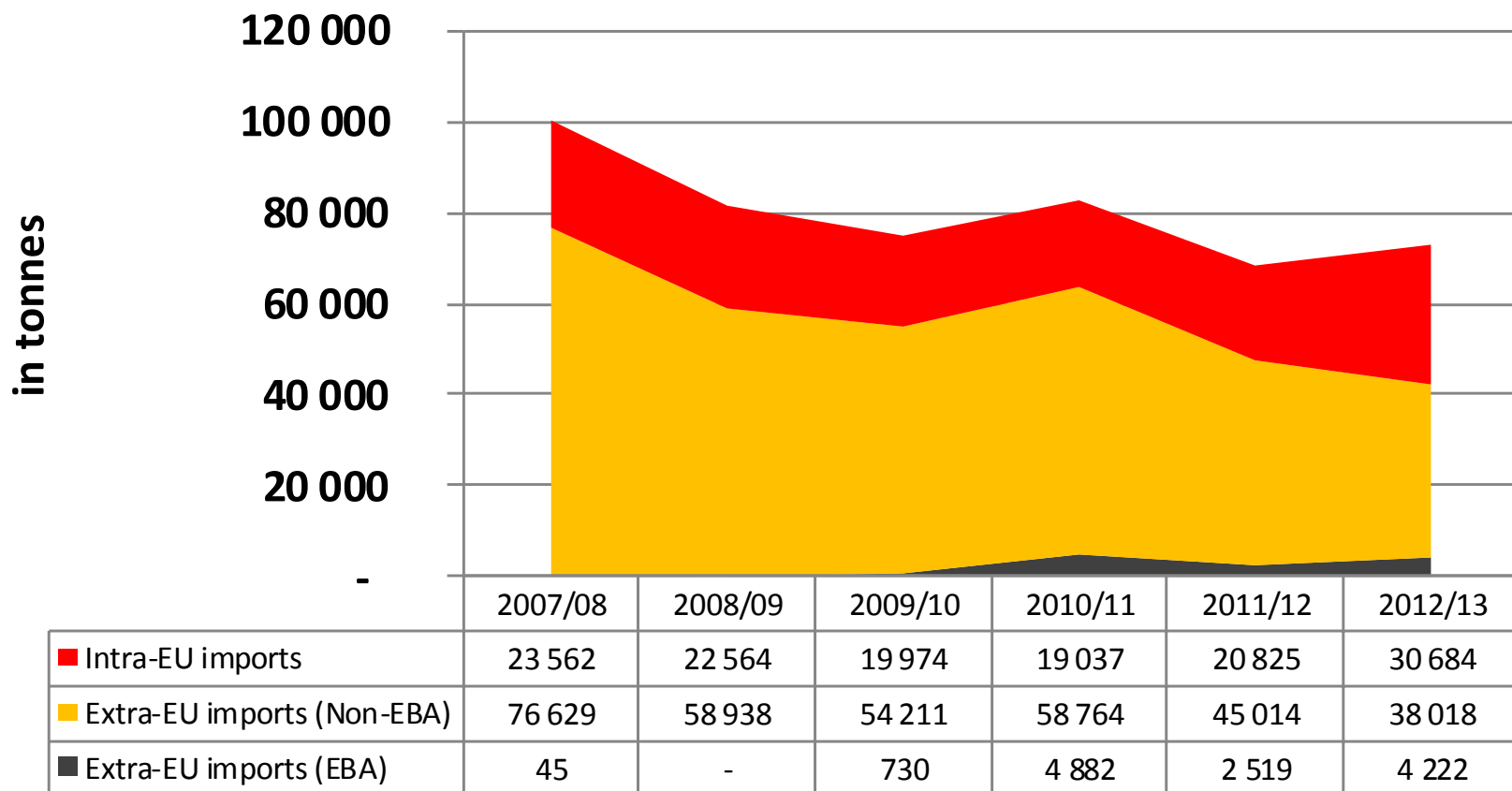
Rice imports - Spain



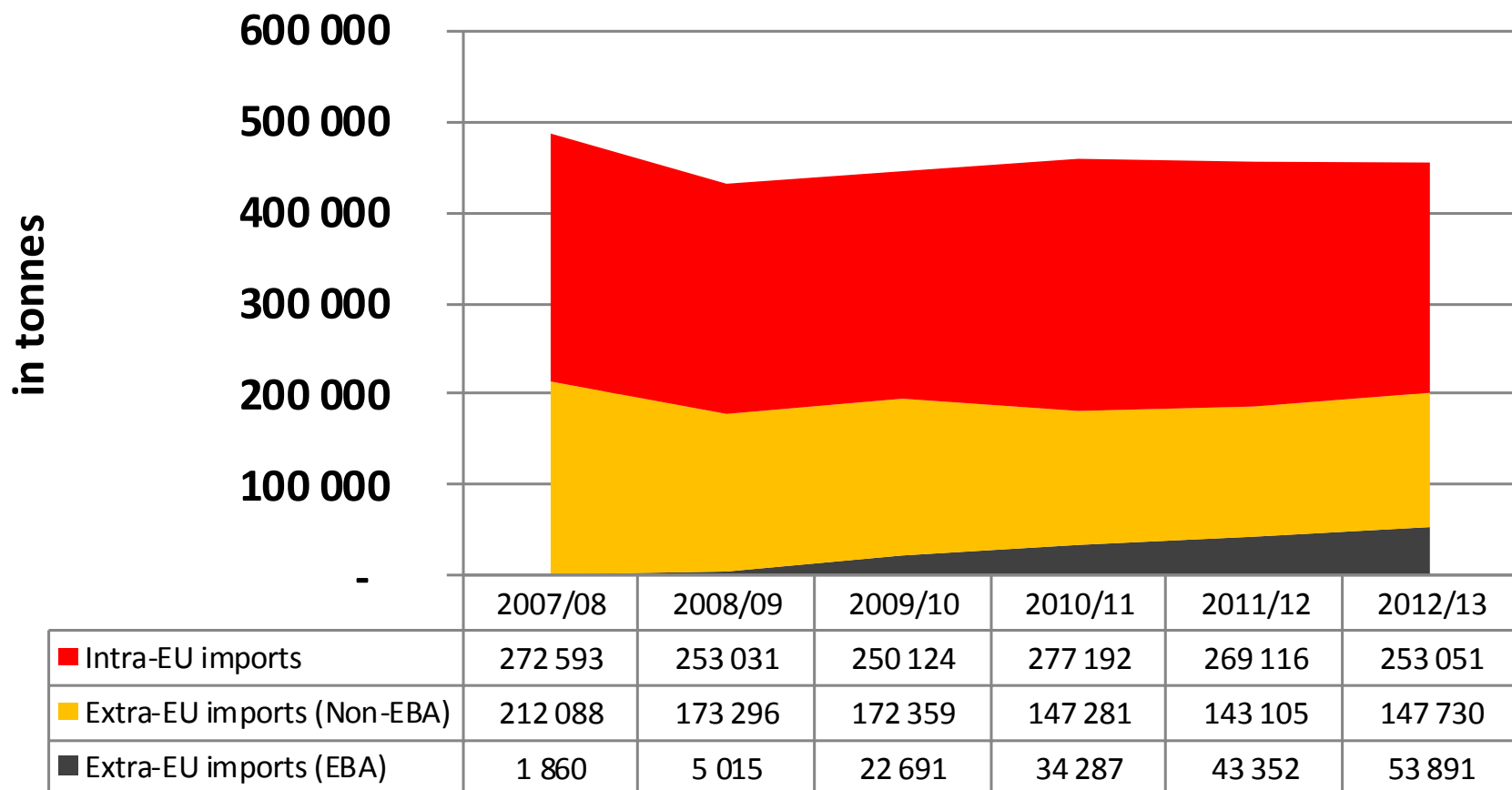
Rice imports - Greece



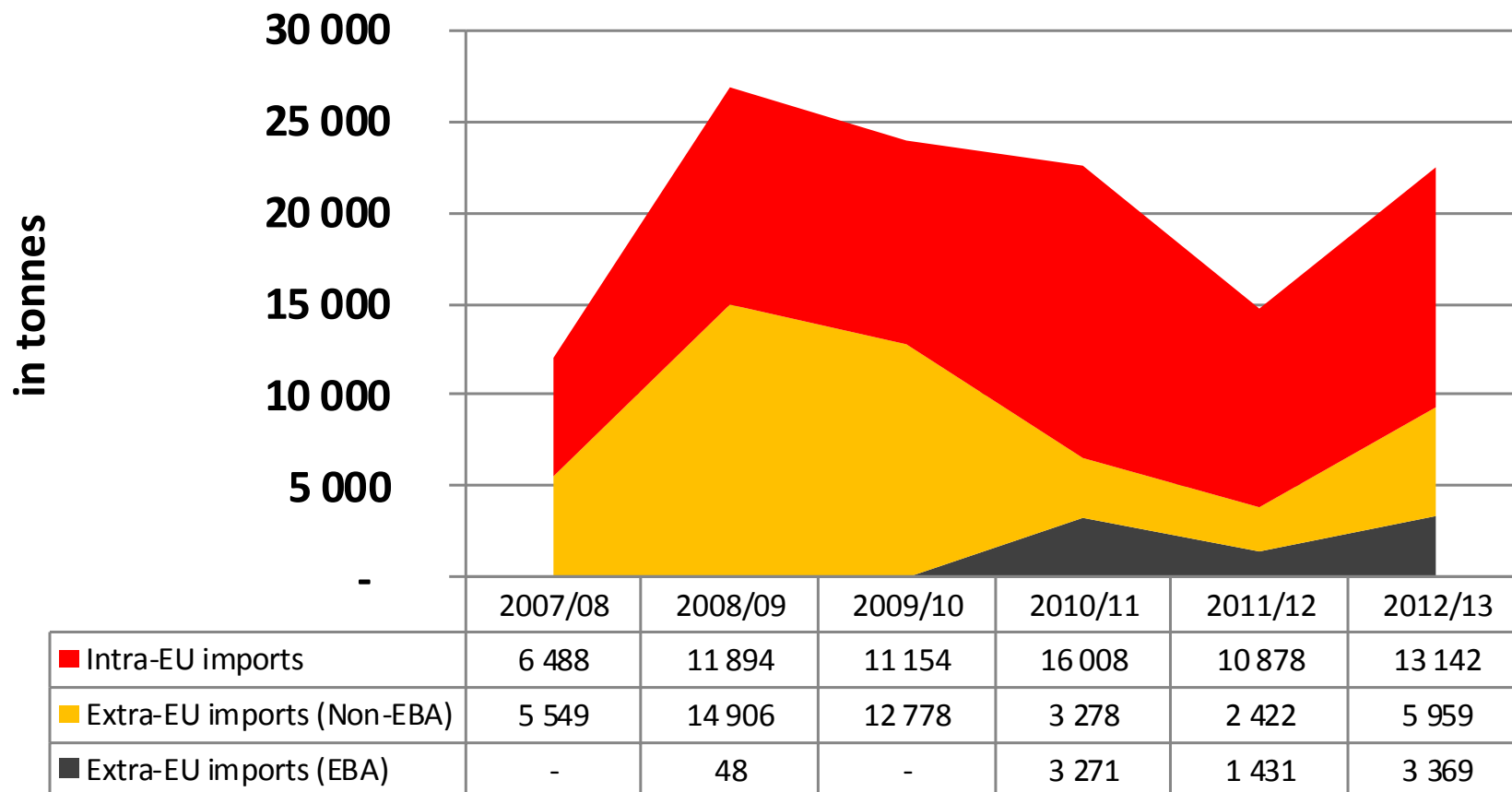
Rice imports - Portugal



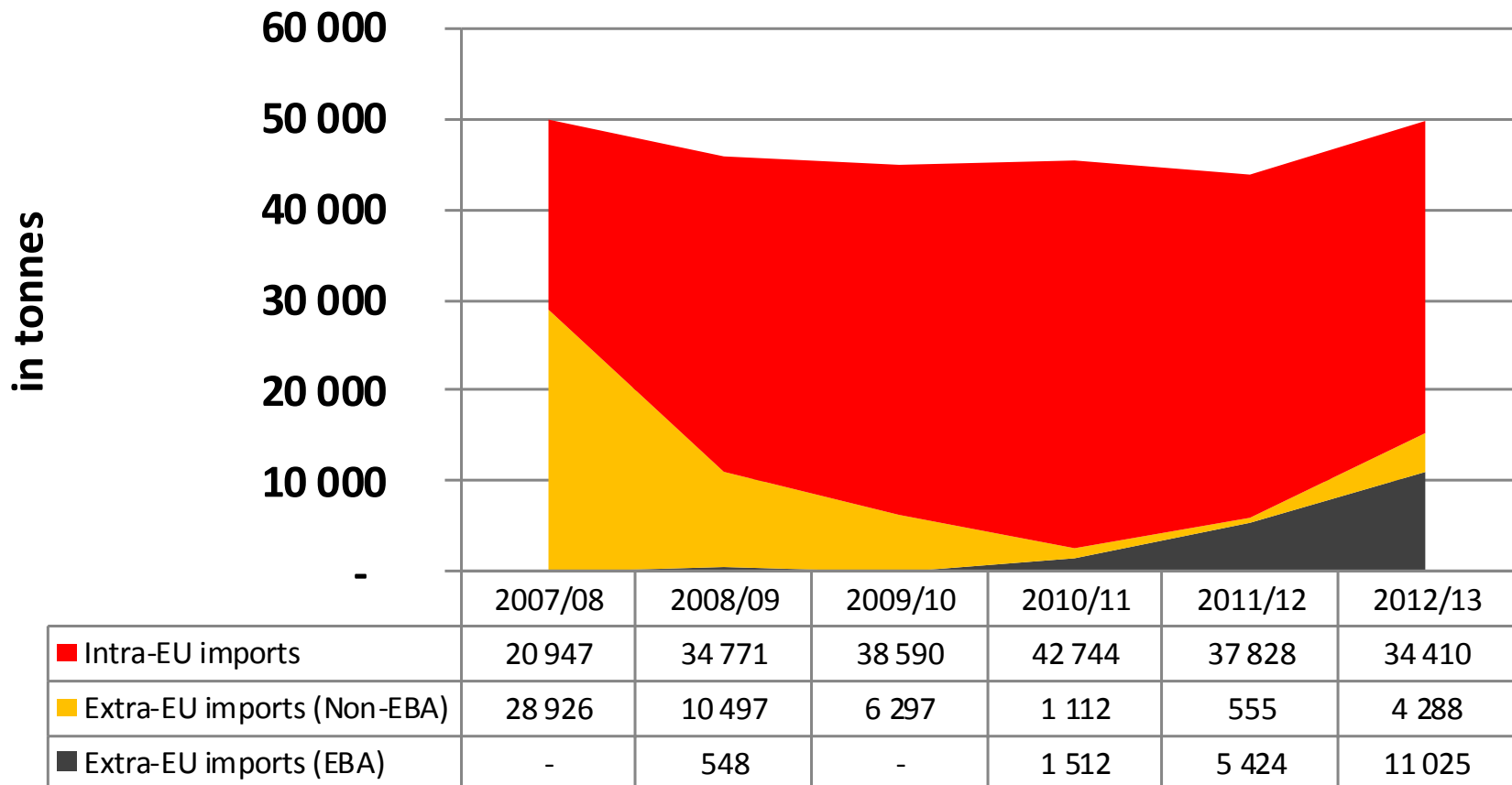
Rice imports - France



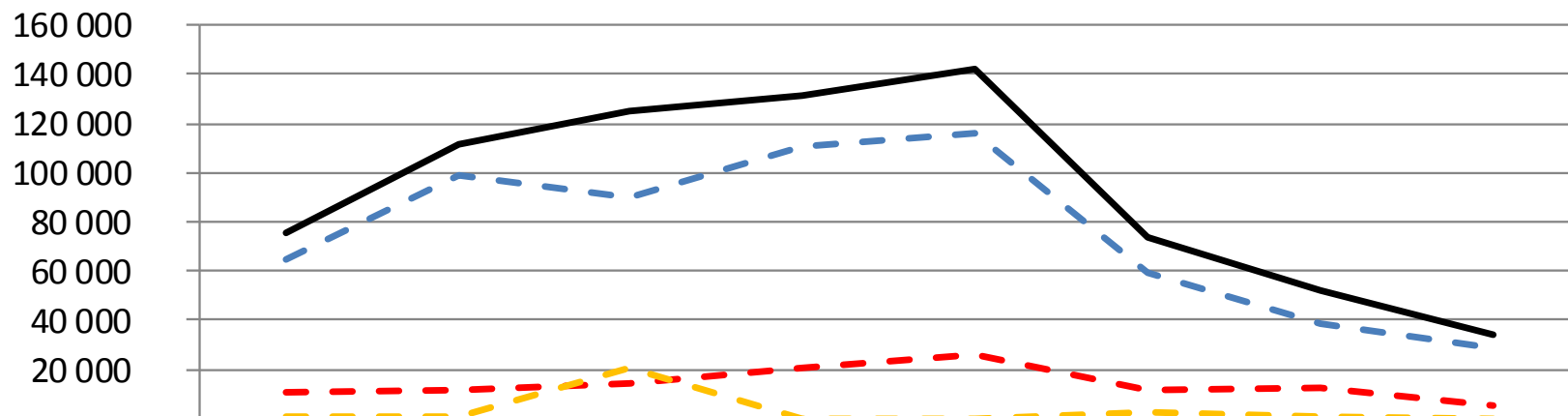
Rice imports - Bulgaria



Rice imports - Romania



ACP rice exports to the EU (in t, milled basis, broken rice included)



	2006	2007	2008	2009	2010	2011	2012	2013 01-08
— Guyana	64 299	99 010	89 913	110 800	115 755	58 987	38 768	28 742
— Suriname	10 664	11 358	14 597	20 665	26 297	12 010	12 252	5 456
— other	410	1 041	20 332	184	67	2 593	941	206
— Total	75 373	111 409	124 841	131 648	142 119	73 590	51 961	34 404

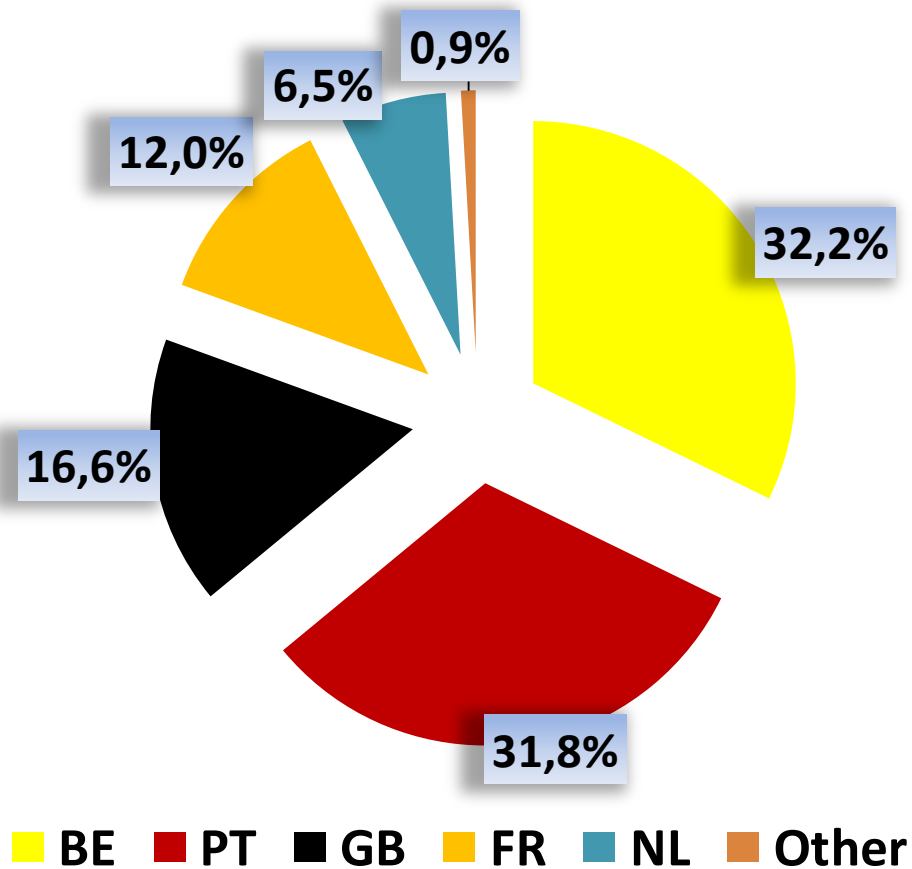
ACP rice exports to the EU: Type of rice

(milled basis, in tonnes)

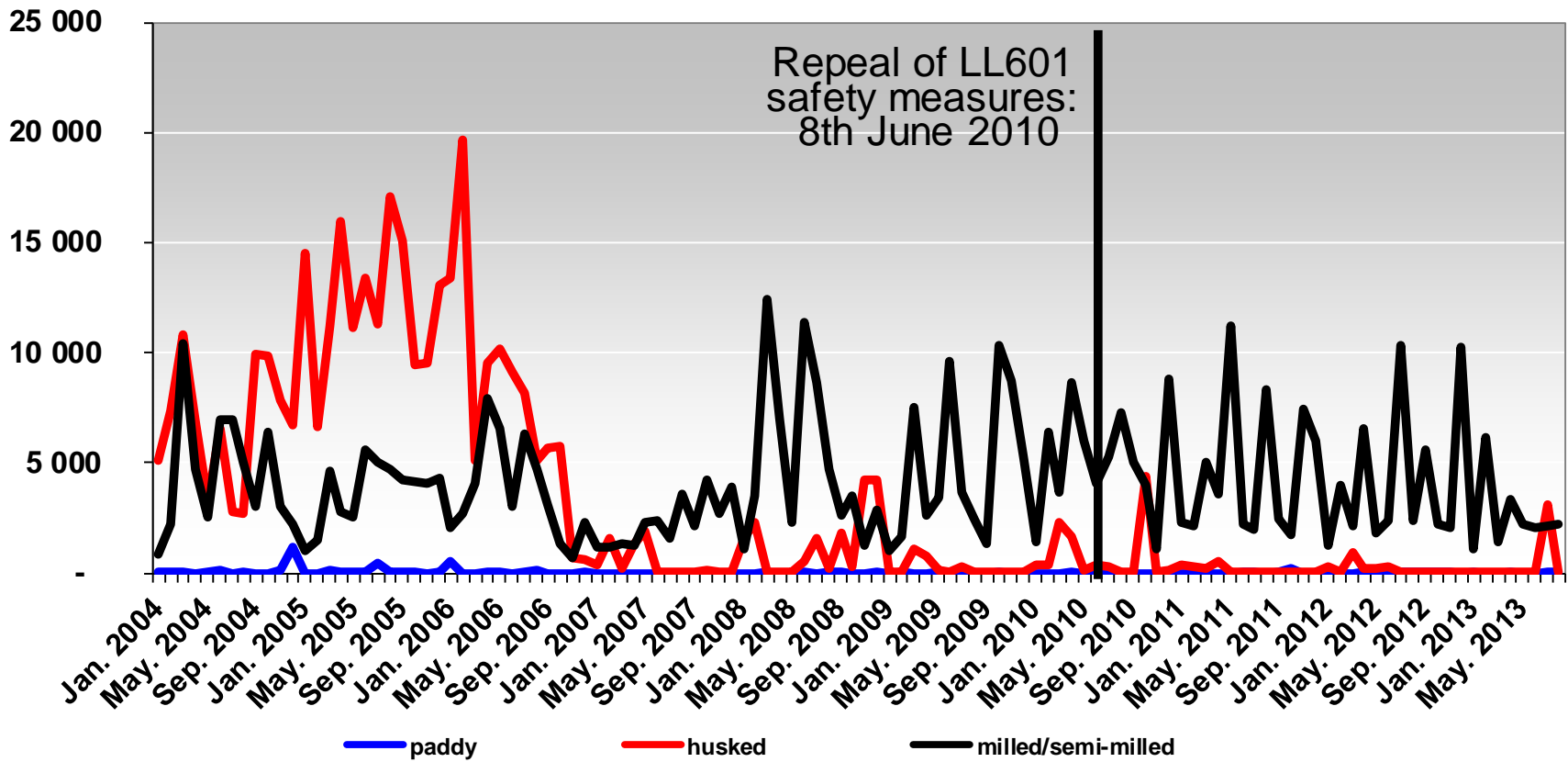
	2006	2007	2008	2009	2010	2011	2012	2013 (8 months)
paddy			22	237	166	33	0	72
husked	68 773	86 849	99 042	90 764	84 618	37 637	17 796	14 347
semi-milled	27	7	11	180	24	12	0	0
milled	2 019	3 364	5 641	2 608	10 473	4 416	3 258	1 964
broken	4 555	21 190	20 125	37 859	46 839	31 491	30 907	18 022
Grand Total	75 373	111 409	124 841	131 648	142 119	73 590	51 961	34 404

ACP exports to EU: MS shares

(2013 01-08, milled basis, broken rice included)

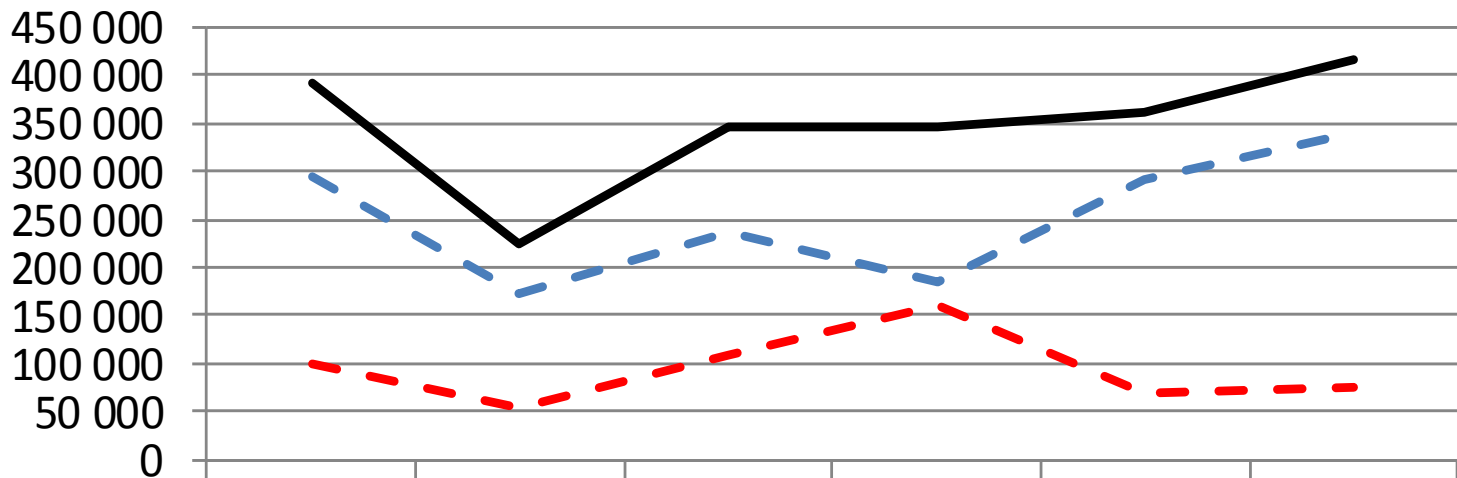


US rice exports to the EU (milled basis, in tonnes)



Basmati rice imports

(husked form, in t, only varieties eligible for zero duty)



	2007-08	2008-09	2009-10	2010-11	2011-12	2012-13
— — India	294 175	173 290	235 648	184 515	292 045	339 259
— — Pakistan	98 336	52 384	109 982	160 634	70 303	76 094
— Total	392 510	225 674	345 630	345 149	362 347	415 353

Basmati imports per MS

(2012/13, husked form, only varieties eligible for zero duty)

■ United Kingdom

■ Netherlands

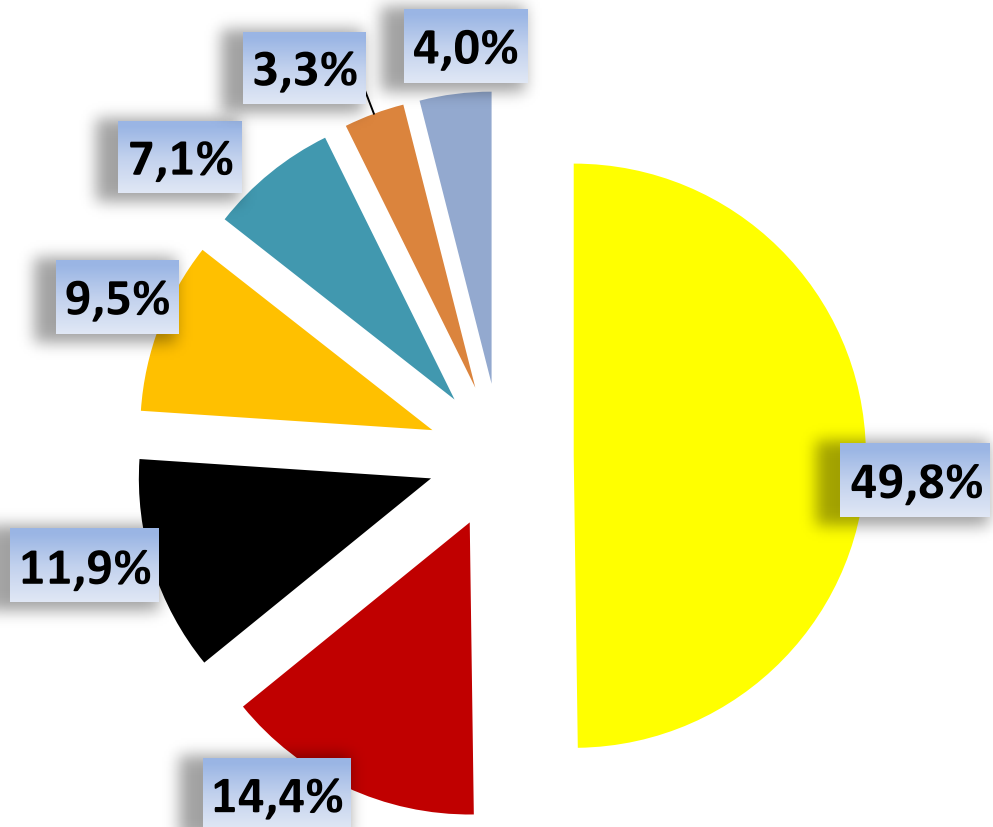
■ France

■ Italy

■ Belgium

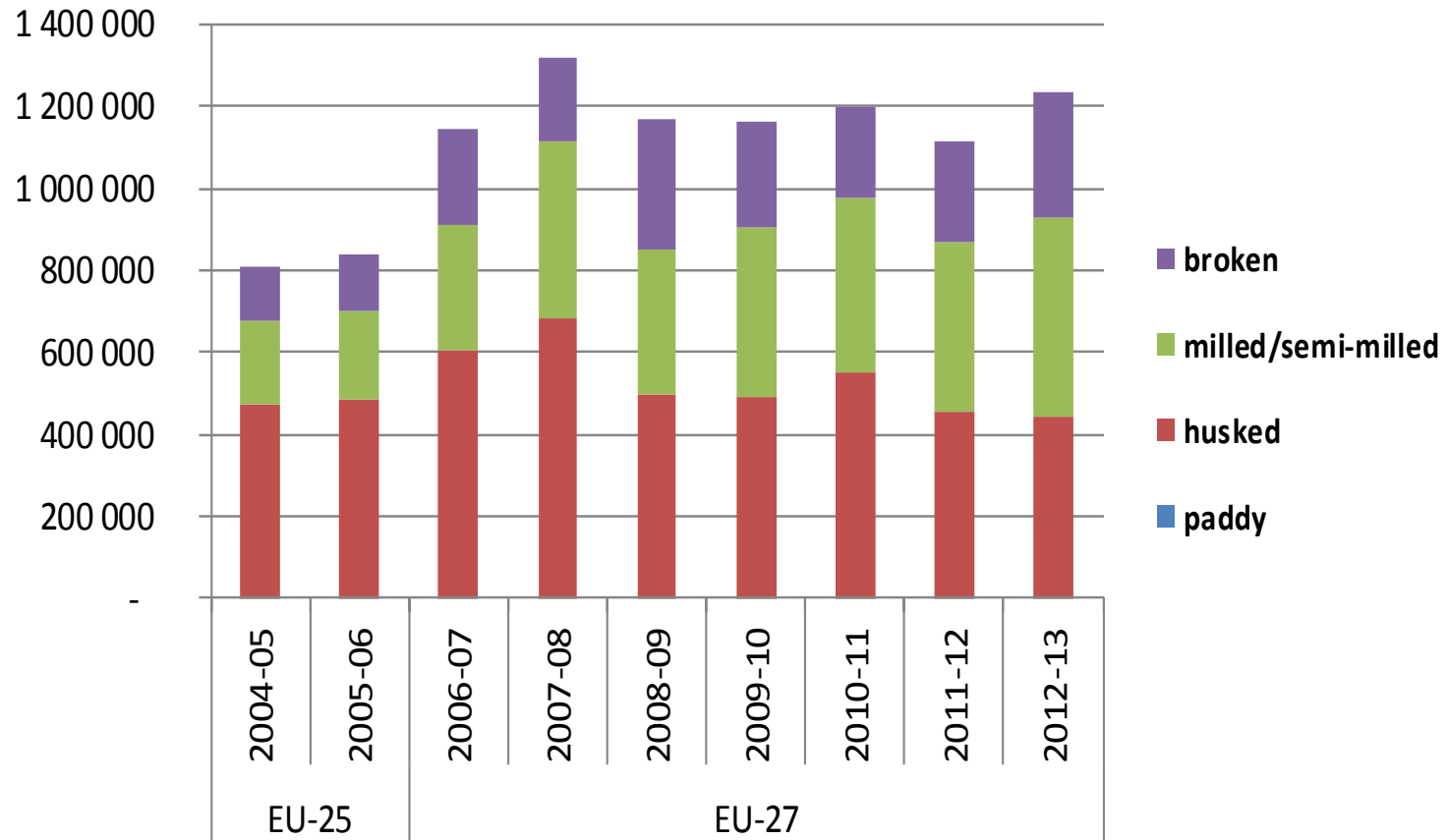
■ Germany

■ other



Rice imports: milled vs husked

(milled basis, in tonnes)



Rice imports: milled vs husked

(milled basis, in tonnes)

Imports (in tonnes, in milled eq.)	EU-25		EU-27						
	2004-05	2005-06	2006-07	2007-08	2008-09	2009-10	2010-11	2011-12	2012-13
paddy	645	468	786	288	988	934	337	651	1 138
husked	475 263	482 220	601 671	685 128	494 091	492 776	552 324	454 934	439 075
<i>husked basmati</i>	<i>186 872</i>	<i>186 870</i>	<i>223 287</i>	<i>270 832</i>	<i>155 715</i>	<i>238 485</i>	<i>238 153</i>	<i>250 020</i>	<i>286 593</i>
<i>husked non-basmati</i>	<i>288 391</i>	<i>295 350</i>	<i>378 384</i>	<i>414 296</i>	<i>338 375</i>	<i>254 291</i>	<i>314 171</i>	<i>204 914</i>	<i>152 482</i>
milled/semi-milled	200 720	215 898	311 003	431 955	353 312	411 072	426 904	413 144	487 509
broken	129 880	142 041	232 502	202 491	322 768	258 670	217 206	246 067	304 859
TOTAL	806 508	840 627	1 145 962	1 319 862	1 171 159	1 163 451	1 196 771	1 114 796	1 232 582

Husked rice imports: Country of origin

(milled basis, in tonnes)

	2006-07	2007-08	2008-09	2009-10	2010-11	2011-12	2012-13
India	231 562	216 222	129 261	176 766	131 936	218 873	255 605
<i>Basmati</i>	196 676	202 981	119 570	162 597	124 842	191 554	234 089
<i>non-Basmati</i>	34 886	13 241	9 691	14 169	7 093	27 319	21 516
Pakistan	62 261	88 732	41 279	84 947	115 218	51 914	58 518
<i>Basmati</i>	26 613	67 852	36 145	75 888	110 135	47 571	52 505
<i>non-Basmati</i>	35 648	20 880	5 134	9 060	5 083	4 343	6 013
Uruguay	59 367	90 706	79 186	33 152	50 284	55 023	45 343
Thailand	112 497	151 652	100 340	76 215	97 340	35 872	14 672
Guyana	81 142	68 118	68 289	87 967	37 630	14 241	13 812
Brazil	19	6 504	6 424	1 862	53 377	25 395	13 081
Vietnam	1 184	4 603	20 490	8 688	6 077	3 644	12 441
Argentina	9 515	2 568	14 385	1 032	39 093	36 957	12 004
Suriname	9 413	14 433	13 532	10 481	12 361	6 455	7 186
US	18 036	6 333	12 738	5 580	6 007	1 934	3 317
other	16 675	35 257	8 166	6 085	3 002	4 626	3 096
TOTAL	601 671	685 128	494 091	492 776	552 324	454 934	439 075

Milled/semi-milled rice imports: Country of origin

(milled basis, in tonnes)

	2006-07	2007-08	2008-09	2009-10	2010-11	2011-12	2012-13
Thailand	158 251	207 333	177 763	188 811	174 632	150 974	144 445
Cambodia	2 169	1 872	5 417	28 362	89 886	96 373	181 019
US	21 862	63 389	41 490	67 665	55 023	47 262	40 699
India	31 539	34 986	17 735	21 640	23 715	44 246	57 065
Pakistan	25 490	40 727	29 009	41 810	43 364	32 560	28 108
Vietnam	5 538	16 771	32 770	10 614	7 144	6 617	11 325
Uruguay	13 250	10 809	7 552	7 231	6 902	5 409	4 267
Brazil	100	441	1 352	1 778	1 586	3 884	1 902
Suriname	1 514	1 156	1 749	2 658	3 224	3 141	2 918
Laos	99	184	86	147	1 416	1 978	2 149
other	43 131	44 846	27 443	26 926	7 235	4 308	13 612
TOTAL	305 150	424 987	344 494	398 190	414 308	396 758	487 509

1/A.) EU27 Rice imports in small packages up to 5 kg Wholly-milled and semi-milled rice

Marketing Year	<i>2009/10</i> (12 months)	<i>2010/11</i> (12 months)	<i>2011/12</i> (12 months)	<i>2012/13</i> (12 months)
Total (in tonnes)	56 826	51 195	57 905	52 187
Thailand	35 687	31 418	37 296	30 273
India	4 044	5 686	8 512	11 763
Pakistan	7 362	7 129	4 509	2 760
Cambodia	4 142	3 801	3 665	3 300
United States	2 980	765	903	766
Vietnam	751	436	706	812
Suriname	271	547	689	677
Sri Lanka	298	437	340	336
Uruguay	288	133	147	97
Brazil	305	266	331	187
China	143	89	20	52
Turkey	93	136	144	171
Others	463	352	644	993

Source: European Commission, DG TAXUD, 2 Sept. 2013

Disclaimer EC DG AGRI:

Imports as notified by Member States at the time of indicated extraction. Figures may be subject to correction.

1/B.) EU27 Rice imports in small packages from 5 to 20 kg Wholly-milled and semi-milled rice

Marketing Year	<i>2011/12</i> (12 months)	<i>2012/13</i> (12 months)
Total (in tonnes)	102 332	136 884
Thailand	42 256	52 604
Cambodia	27 141	42 431
India	13 651	20 683
Pakistan	9 220	8 439
United States	7 155	7 972
Laos	1 136	1 600
Vietnam	1 042	1 788
Bangladesh	14	847
Others	730	1 368

Source: European Commission, DG TAXUD, 3 Sept. 2013

Disclaimer EC DG AGRI

Imports as notified by Member States at the time of indicated extraction. Figures may be subject to correction.

1.) EU27 Rice imports in small packages up to 20 kg

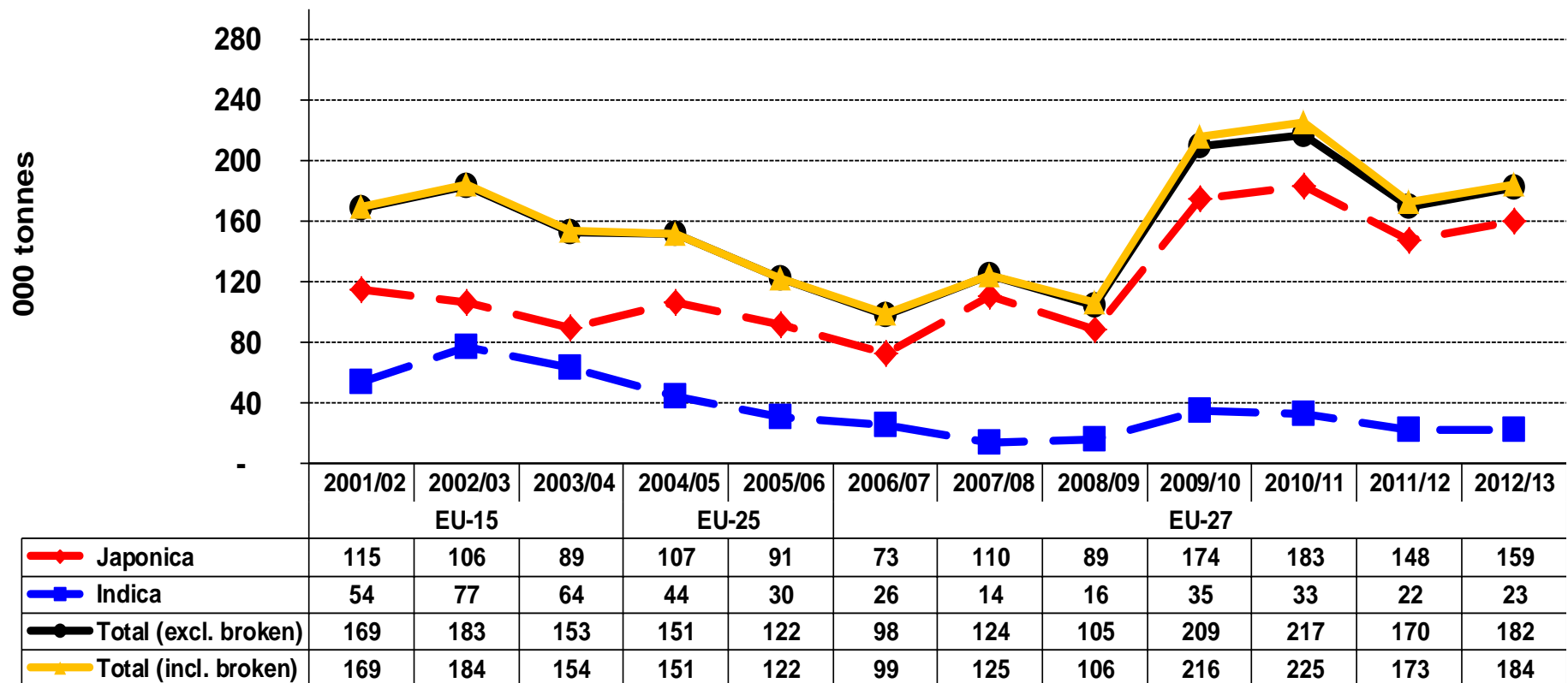
Marketing Year	2011/12 (12 months)	2012/13 (12 months)
Total (in tonnes)	160 237	189 071
Thailand	79 551	82 877
Cambodia	30 806	45 732
India	22 163	32 445
Pakistan	13 729	11 199
United States	8 059	8 738
Laos	1 136	1 600
Vietnam	1 748	2 599
Bangladesh	14	847
Others	1 374	2 361

Source: European Commission, DG TAXUD, 3 Sept. 2013

Disclaimer EC DG AGRI

Imports as notified by Member States at the time of indicated extraction. Figures may be subject to correction.

EXTERNAL TRADE - EXPORTS (milled basis, Eurostat data)





Issued licences

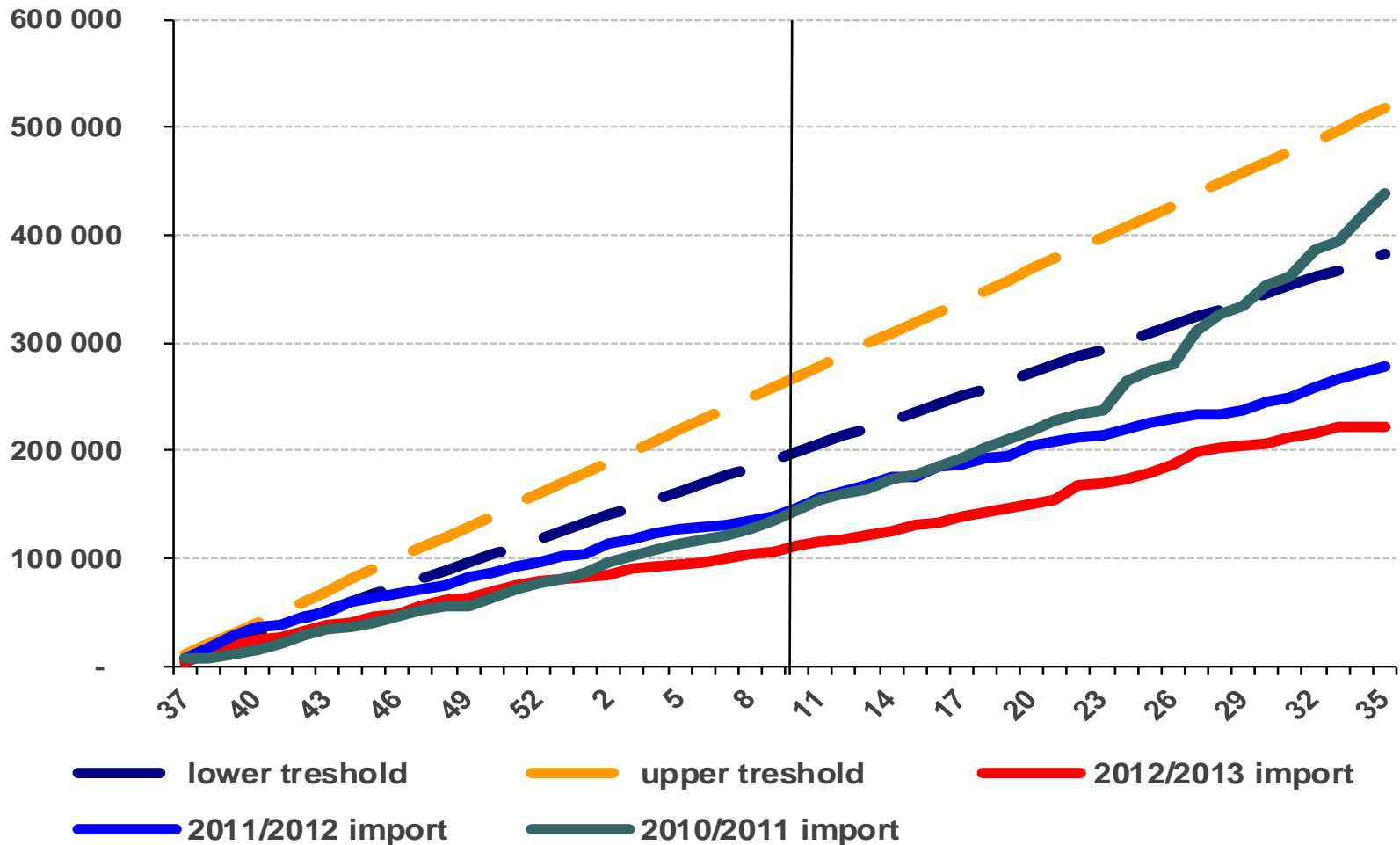
Issued import licences

in tonnes	2012/13	2011/12	2012/13 vs 2011/12
Paddy *	2 177	1 258	73,0%
Rice for sowing**	118,2	101,9	16,0%
Japanica	1 925	1 068	80,2%
Indica	135	88	52,4%
Husked	593 093	633 665	-6,4%
Japanica	8 963	15 568	-42,4%
Indica	584 130	618 097	-5,5%
<i>Basmati</i>	370 786	356 153	4,1%
<i>Indica excl. basmati</i>	213 344	261 944	-18,6%
<i>Husked excl. Basmati</i>	222 307	277 512	-19,9%
Milled / semi-milled	477 181	430 513	10,8%
Japanica	85 830	61 386	39,8%
Indica	391 351	369 127	6,0%
Total (milled eq.)	886 449	867 517	2,2%
Japanica	92 553	72 342	27,9%
Indica	793 896	795 176	-0,2%
Broken rice	298 853	256 641	16,4%

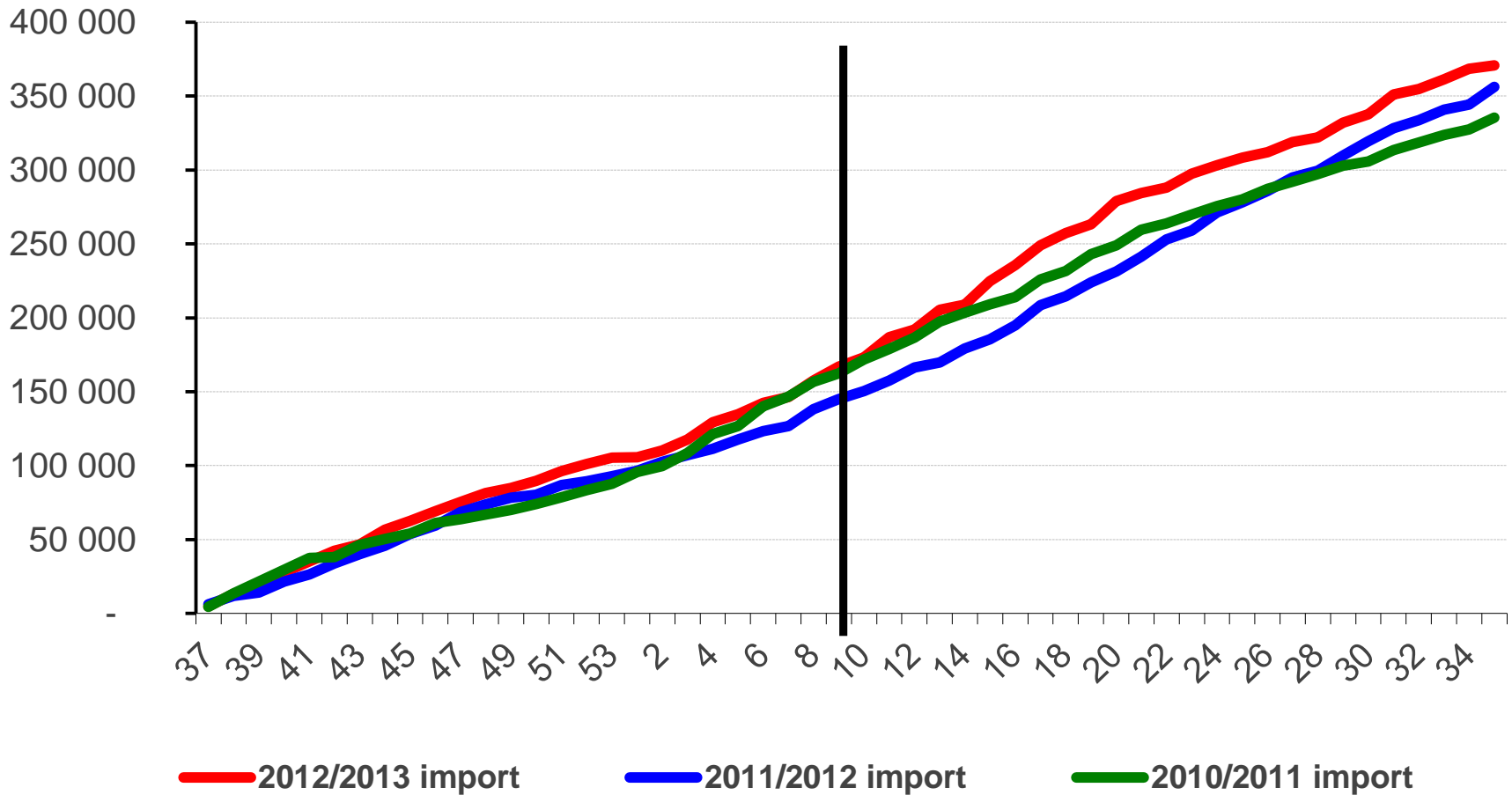
*paddy rice: COMEXT (available only till the end of July)

** Rice for sowing not included into 'Total (in milled equivalent)'

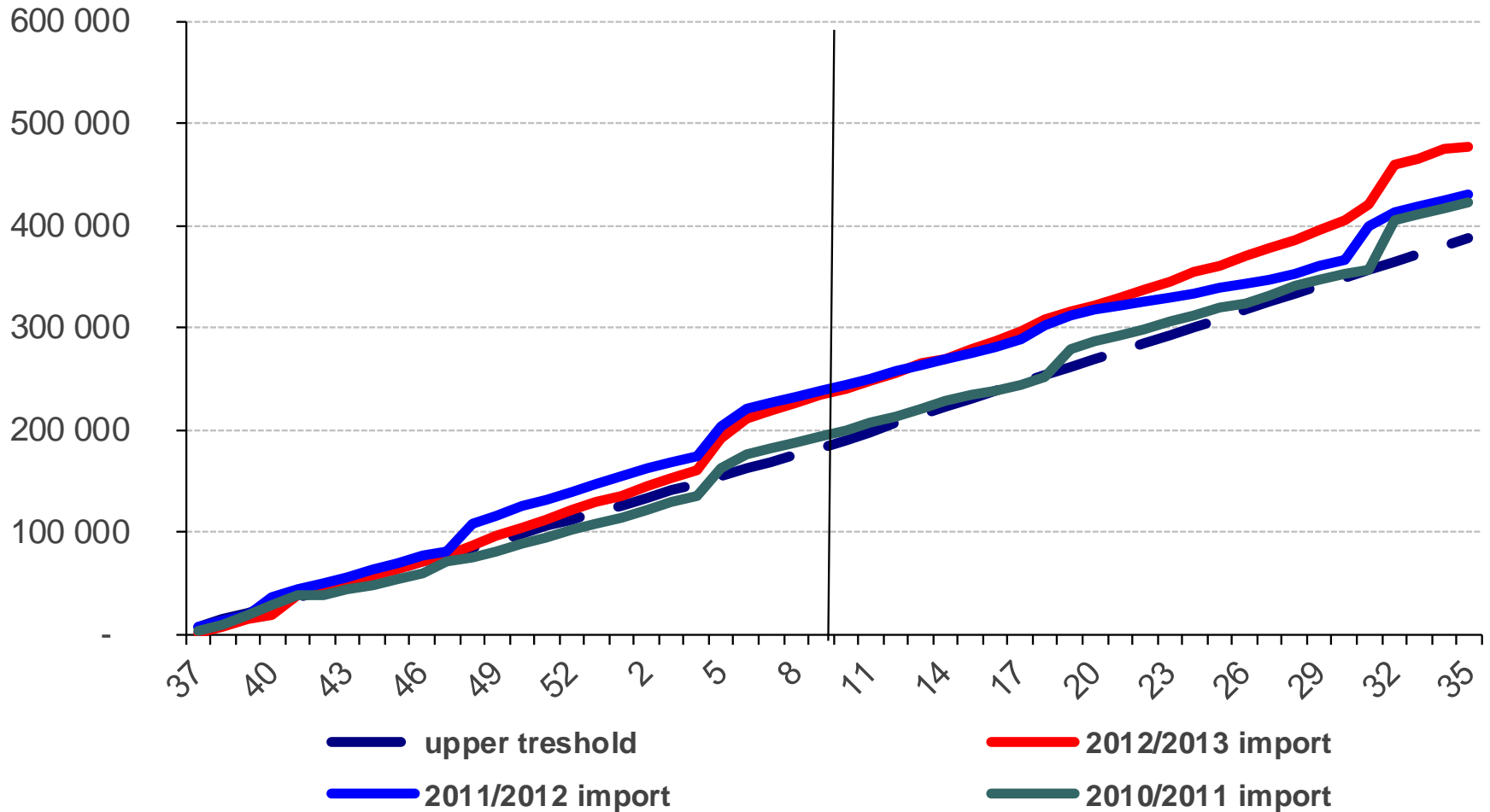
Issued import licences – husked non-basmati



Issued import licences – husked basmati



Issued import licences – milled/semi-milled



Issued export licences

in tonnes	2012/13	2011/12	2012/13 vs 2011/12
Paddy *	33 161	29 181	13,6%
Rice for sowing**	1 536	1 945	-21,0%
Japonica	31 314	23 513	33,2%
Indica	311	3 724	-91,7%
Husked	11 452	34 736	-67,0%
Japonica	9 875	32 746	-69,8%
Indica	1 577	1 990	-20,8%
Milled / semi-milled	156 047	148 816	4,9%
Japonica	136 008	132 537	2,6%
Indica	20 039	16 279	23,1%
Total (in milled eq.)	182 328	187 053	-2,5%
Japonica	146 703	158 987	-7,7%
Indica	35 625	28 066	26,9%

*paddy rice: COMEXT (available only till the end of July)

** Rice for sowing not included into 'Total (in milled equivalent)'



Thank you for your attention!

Market presentation available:

http://ec.europa.eu/agriculture/cereals/presentations/index_en.htm