



European
Commission

CAP CONTEXT INDICATORS

2014-2020

14. LABOUR PRODUCTIVITY IN AGRICULTURE

2017 update

CONTEXT INDICATOR 14: LABOUR PRODUCTIVITY IN AGRICULTURE

Labour productivity in agriculture in the EU-28 ranges from EUR 4 000 to EUR 72 000 per AWU...

Labour productivity in agriculture is expressed as the Gross Value Added (GVA) in agriculture per Annual Work Unit (AWU). Agricultural labour productivity in the EU-28 stood at EUR 17 000 per AWU in 2016, showing a slight decline compared with the previous year. This value varies greatly among EU groups, as it is almost five times higher in the EU-15 (EUR 27 550 per AWU) than in the EU-N13 (EUR 5 614 per AWU). The highest labour productivity is found in the Netherlands (EUR 72 335 per AWU) which is roughly four times the EU-28 average, followed by Belgium (EUR 37 116 per AWU) and Denmark (EUR 34 858 per AWU). By contrast, Poland, Latvia, and Croatia presented the lowest labour productivities in their agricultural sector, at EUR 4 277, EUR 4 560 and EUR 5 268 respectively¹.

...and is increasing in most Member States

Between 2011 and 2016 the agricultural labour productivity in the EU-28 grew at an average annual rate of 2.3%, with a higher rate for the EU-N13 (+3.4%) than for the EU-15 (+1.7%). The highest annual rates of growth are found in Belgium (+24.3%), Latvia (+20.1%) and Slovakia (+11.9%). On the other hand, the average annual labour productivity in agriculture decreased in 9 Member States, with the highest rates found in Malta (-4.0%) and in Estonia (-2.1%).

¹ These figures have not been adjusted for purchasing power.

Graph 1 - Labour productivity in agriculture in 2016 and average annual growth rate, 2011-2016

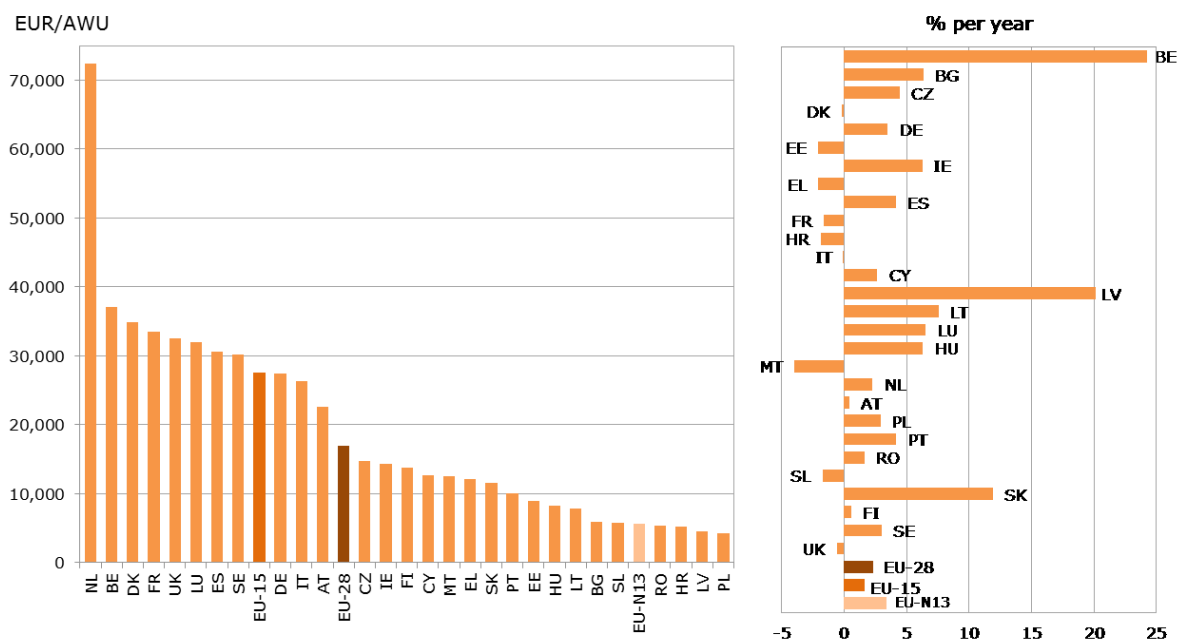
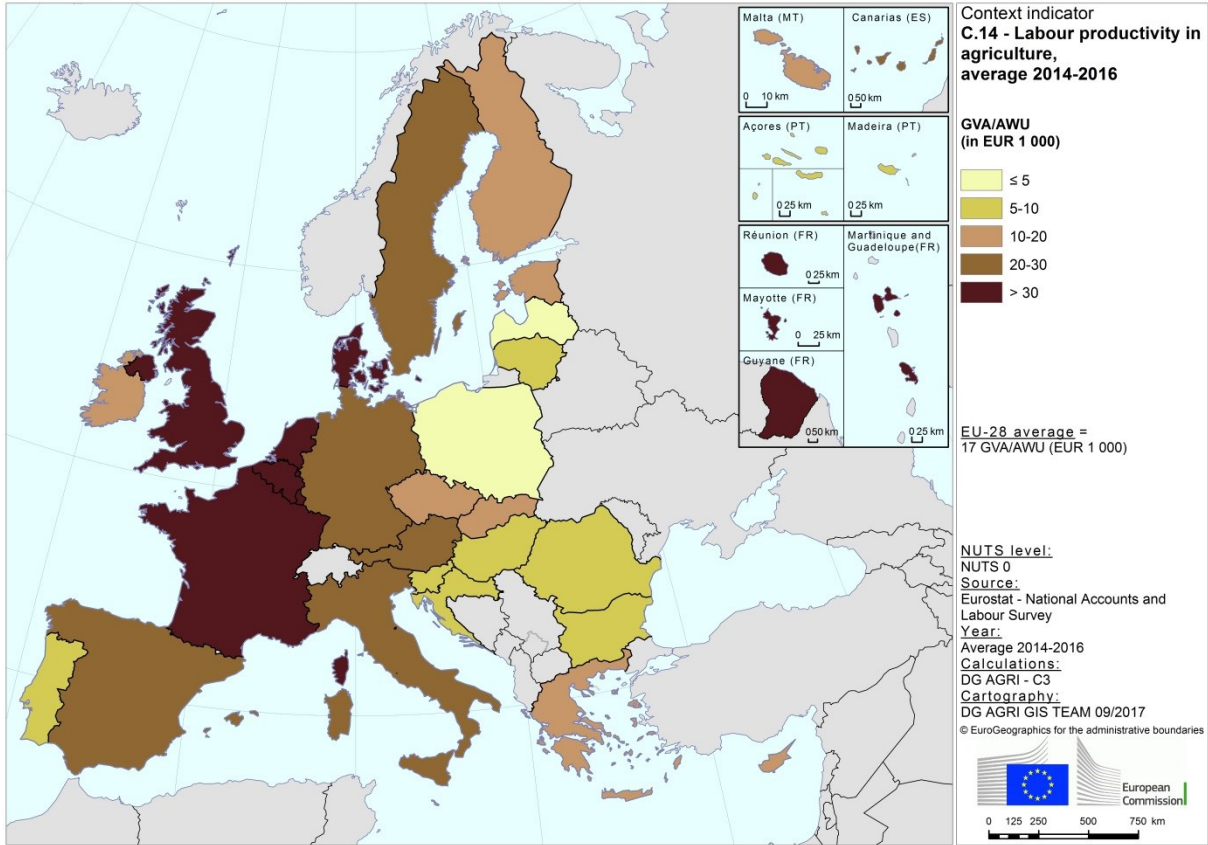


Table 1 - Labour productivity in agriculture

Indicator	C.14 - Labour productivity in agriculture	Change in labour productivity in agriculture
Measurement	GVA (at basic price - in EUR) / AWU	Average annual growth rate of GVA/AWU in agriculture (in volume)
Year	2016	2011 to 2016
Country	EUR/AWU	% per year
Belgium	37,116	24.3
Bulgaria	5,896	6.3
Czech Republic	14,747	4.4
Denmark	34,858	-0.2
Germany	27,456	3.5
Estonia	8,911	-2.1
Ireland	14,329	6.3
Greece	12,140	-2.0
Spain	30,642	4.2
France	33,540	-1.6
Croatia	5,268	-1.9
Italy	26,313	-0.1
Cyprus	12,607	2.7
Latvia	4,560	20.1
Lithuania	7,837	7.5
Luxembourg	32,017	6.5
Hungary	8,299	6.3
Malta	12,518	-4.0
Netherlands	72,335	2.3
Austria	22,632	0.4
Poland	4,277	2.9
Portugal	10,021	4.2
Romania	5,309	1.7
Slovenia	5,778	-1.7
Slovakia	11,560	11.9
Finland	13,804	0.6
Sweden	30,118	3.0
United Kingdom	32,550	-0.6
EU-28	16,992	2.3
EU-15	27,550	1.7
EU-N13	5,614	3.4

Context indicator	14 - Labour productivity in agriculture
Comments on methodology and data	Not applicable

Map 1 – Labour productivity in agriculture, average 2014-2016



Map 2 - Change in labour productivity in agriculture, 2011-2016

