



Road safety evolution in EU

Mars 2012

Fatalities

	1991	1992	1993	1994	1995	1996	1997	1998	1999	2000	2001	2002	2003	2004	2005	2006	2007	2008	2009	2010	(provisional) 2010 - 2011
Belgique/België	1,873	1,671	1,660	1,692	1,449	1,356	1,364	1,500	1,397	1,470	1,486	1,306	1,214	1,162	1089	1069	1071	944	944	812	4%
България (Bulgaria)	1,114	1,299	1,307	1,390	1,264	1,014	915	1,003	1,047	1,012	1,011	959	960	943	957	1043	1006	1061	901	776	-15%
Česká republika	1,331	1,571	1,524	1,637	1,588	1,570	1,597	1,360	1,455	1,486	1,333	1,430	1,447	1,382	1286	1063	1221	1076	901	802	-4%
Danmark	606	577	559	546	582	514	489	499	514	498	431	463	432	369	331	306	406	406	303	255	-13%
Deutschland	11,300	10,631	9,949	9,814	9,454	8,758	8,549	7,792	7,772	7,503	6,977	6,842	6,613	5,842	5361	5091	4949	4477	4152	3648	9%
Eesti	490	287	321	364	332	213	280	284	232	204	199	223	164	170	170	204	196	132	98	78	29%
Ireland	445	415	431	404	437	453	473	458	414	418	412	376	337	377	400	365	338	280	239	212	-12%
Ελλάδα (Elláda)	2,112	2,158	2,160	2,253	2,412	2,157	2,105	2,182	2,116	2,037	1,880	1,634	1,605	1,670	1658	1657	1612	1555	1456	1258	-13%
España	8,837	7,818	6,375	5,612	5,749	5,482	5,604	5,956	5,738	5,777	5,517	5,347	5,400	4,749	4442	4104	3823	3100	2714	2479	-6%
France	10,483	9,902	9,865	9,019	8,892	8,540	8,445	8,920	8,486	8,079	8,162	7,655	6,058	5,530	5318	4709	4620	4275	4273	3992	-1%
Italia	8,109	8,053	7,187	7,091	7,020	6,676	6,714	6,313	6,688	7,061	7,096	6,980	6,563	6,122	5818	5669	5131	4731	4237	4090	-4%
Κύπρος (Kypros)/Kibris	103	132	115	133	118	128	115	111	113	111	98	94	97	117	102	86	89	82	71	60	18%
Latvija	997	787	724	774	660	594	567	677	652	635	558	559	532	516	442	407	419	316	254	218	-18%
Lietuva	1,173	836	958	765	672	667	752	829	748	641	706	697	709	752	773	760	740	499	370	299	-1%
Luxembourg	83	69	78	65	70	71	60	57	58	76	70	62	53	50	47	43	46	35	48	32	13%
Magyarország	2,120	2,101	1,678	1,562	1,589	1,370	1,391	1,371	1,306	1,200	1,239	1,429	1,326	1,296	1278	1303	1232	996	822	740	-14%
Malta	16	11	14	6	14	19	18	17	4	15	16	16	16	13	17	11	14	15	21	15	13%
Nederland	1,281	1,253	1,235	1,298	1,334	1,180	1,163	1,066	1,090	1,082	993	987	1,028	804	750	730	709	677	644	537	4%
Österreich	1,551	1,403	1,283	1,338	1,210	1,027	1,105	963	1,079	976	958	956	931	878	768	730	691	679	633	552	-6%
Polska	7,901	6,946	6,341	6,744	6,900	6,359	7,310	7,080	6,730	6,294	5,534	5,826	5,642	5,712	5444	5243	5583	5437	4572	3908	7%
Portugal	3,217	3,086	2,701	2,505	2,711	2,730	2,521	2,126	2,028	1,877	1,670	1,655	1,542	1,294	1247	969	974	885	840	937	-7%
România	3,078	2,816	2,826	2,877	2,845	2,845	2,863	2,778	2,468	2,466	2,450	2,411	2,229	2,442	2629	2587	2800	3061	2796	2377	-15%
Slovenija	462	493	493	505	415	389	357	309	334	314	278	269	242	274	258	262	293	214	171	138	2%
Slovensko	614	677	584	633	660	616	788	819	647	628	614	610	645	603	606	614	667	622	380	371	-13%
Suomi/Finland	632	601	484	480	441	404	438	400	431	396	433	415	379	375	379	336	380	344	279	272	7%
Sverige	745	759	632	589	572	537	541	531	580	591	583	560	529	480	440	445	471	397	358	266	18%
United Kingdom	4,753	4,379	3,957	3,807	3,765	3,740	3,743	3,581	3,564	3,580	3,598	3,581	3,658	3,368	3336	3298	3059	2645	2337	1905	6%
	75,426	70,731	65,441	63,903	63,155	59,409	60,267	58,982	57,691	56,427	54,302	53,342	50,351	47,290	45,346	43,104	42,540	38,941	34,814	31,029	-2%

Source : CARE (EU road accidents database) or national publications

European Commission / Directorate General Energy and Transport



Road safety evolution in EU

Mars 2012

Accidents

	1991	1992	1993	1994	1995	1996	1997	1998	1999	2000	2001	2002	2003	2004	2005	2006	2007	2008	2009	2010
Belgique/België	58,223	55,438	54,933	53,018	50,744	48,750	50,078	51,167	51,601	49,065	47,444	47,444	50,479	48,670	49,307	49,171	43,239	42,115	41,944	39,306
България (Bulgaria)	4,875	7,206	7,355	7,288	7,435	6,351	6,018	6,905	7,586	6,886	6,709	6,769	6,997	7,612	8,224	8,222	8,010	8,045	7,068	6,610
Česká republika	21,460	24,936	25,147	27,590	28,746	29,340	28,376	27,207	26,918	25,445	26,027	26,586	27,320	26,516	25,239	22,115	23,060	22,481	21,706	19,675
Danmark	8,757	8,965	8,513	8,279	8,373	8,080	8,004	7,556	7,605	7,346	6,856	7,121	6,749	6,209	5,413	5,403	5,549	5,020	4,174	3,498
Deutschland	385,147	395,462	385,384	392,754	388,003	373,082	380,835	377,257	395,689	382,949	375,345	362,054	354,534	339,308	336,618	327,984	335,845	320,614	310,667	288,297
Eesti	1,923	1,167	1,317	1,584	1,644	1,318	1,491	1,612	1,472	1,504	1,888	2,164	1,931	2,244	2,341	2,585	2,449	1,868	1,506	1,347
Ireland	6,493	6,677	6,376	6,610	8,117	8,686	8,496	8,239	7,806	7,749	6,909	6,625	5,984	5,780	6,533	6,018	6,529	6,736	6,618	6,615
Ελλάδα (Elláda)	20,764	22,006	22,165	22,222	22,798	23,775	24,295	24,819	24,231	23,001	19,671	16,809	15,751	15,547	16,914	16,190	15,499	15,083	14,789	15,032
España	98,128	87,293	79,925	78,474	83,586	85,588	86,062	97,570	97,811	101,729	100,393	98,433	99,987	94,009	91,187	99,779	100,508	93,161	88,251	85,503
France	148,886	143,361	137,500	132,726	132,949	125,406	125,202	124,387	124,524	121,223	116,745	105,470	90,220	85,390	84,525	80,309	81,272	74,487	72,315	67,288
Italia	170,702	170,814	153,393	170,679	182,761	190,068	190,031	204,615	225,646	229,034	263,100	239,354	252,271	243,490	240,011	238,124	230,871	218,963	215,430	211,404
Κύπρος (Κυπρος)/Kibris					3,052		3,021	2,641	2,500	2,397	2,393	2,369	2,358	1,880	1,382	1,558	1,468	1,392	1,197	1,197
Latvija	4,271	3,474	3,389	3,814	4,056	3,711	3,925	4,540	4,442	4,482	4,766	5,083	5,379	10,487	9,310	8,986	9,865	8,894	3,160	3,193
Lietuva	6,067	4,049	4,319	3,902	4,144	4,579	5,319	6,445	6,356	5,807	5,972	6,091	5,965	6,357	6,772	6,588	6,448	4,796	3,827	3,530
Luxembourg	1,126	1,139	1,184	1,133	1,145	1,050	1,016	1,058	1,076	899	772	769	720	716	775	805	954	927	869	787
Magyarország	24,589	24,623	19,527	20,722	19,817	18,393	19,097	20,147	18,923	17,493	18,505	19,686	19,976	20,957	20,777	20,977	20,634	19,174	17,863	16,308
Malta			756	845	969						1,231	1,312	1,188	1,281	848	894	942	764	636	577
Nederland	40,703	41,021	40,204	41,391	42,641	41,041	41,036	41,299	42,271	42,271	35,313	33,538	31,635	27,758	27,007	24,527	25,819	23,708	19,378	10,778
Österreich	44,730	44,730	41,791	42,015	38,956	38,253	39,695	39,225	42,348	42,126	43,073	43,175	43,423	42,657	40,896	39,884	41,096	39,173	37,925	35,348
Polska	54,038	50,989	48,901	53,647	56,904	57,911	66,586	61,855	55,106	57,331	53,798	53,558	51,076	51,068	48,100	46,876	49,536	49,054	44,195	38,832
Portugal	48,953	50,851	48,645	45,830	48,339	49,265	49,417	49,357	48,508	44,463	42,521	42,219	41,495	38,930	37,066	35,680	35,311	33,613	35,484	35,426
România	8,948	8,181	8,972	9,381	9,119	8,931	8,801	8,457	7,950	7,555	7,528	7,453	6,942	7,335	19,819	21,905	24,661	29,307	28,612	25,995
Slovenija	5,479	5,781	6,290	6,552	6,567	6,273	6,973	5,874	7,009	8,584	9,595	10,541	11,910	12,890	10,509	11,620	11,640	9,165	8,717	7,659
Slovensko					8,713		9,489	9,704	8,578	7,884	8,181	7,866	8,551	8,443	7,903	7,988	8,483	8,416	8,415	8,119
Suomi/Finland	9,374	7,882	6,147	6,245	7,812	7,274	6,980	6,902	6,997	6,633	6,451	6,196	6,907	6,767	7,020	6,740	6,657	6,881	6,414	6,072
Sverige	16,003	15,599	14,959	15,888	15,626	15,321	15,752	15,514	15,834	15,770	15,796	16,947	18,365	18,029	18,094	18,213	18,548	18,462	18,027	16,504
United Kingdom	242,060	239,754	235,492	241,037	237,336	243,286	247,479	246,410	242,610	242,117	236,461	234,247	220,079	213,043	203,712	194,789	188,105	176,814	169,805	160,080
	1,444,623	1,434,795	1,374,434	1,405,067	1,420,352	1,408,916	1,435,023	1,451,802	1,482,628	1,462,996	1,463,443	1,409,879	1,388,192	1,343,373	1,326,302	1,303,930	1,302,998	1,239,113	1,188,992	1,114,980

Source : CARE (EU road accidents database) or national publications

European Commission / Directorate General Energy and Transport



Road safety evolution in EU

Mars 2012

Injured

	1991	1992	1993	1994	1995	1996	1997	1998	1999	2000	2001	2002	2003	2004	2005	2006	2007	2008	2009	2010
Belgique/België	82,646	79,101	78,008	75,332	72,300	68,899	71,540	72,758	73,145	69,961	65,294	59,548	57,326	56,814	53,610	54,615	57,200	55,643	55,133	52,758
България (Bulgaria)	5,168	8,254	8,548	8,441	8,717	7,325	7,007	7,980	9,098	8,030	7,984	8,100	8,488	9,308	10,112	10,215	9,827	9,952	8,674	8,674
Česká republika	27,502	32,000	32,277	35,667	36,967	37,743	36,608	35,227	34,710	32,439	33,676	34,389	35,438	34,254	32,211	28,114	29,191	28,501	27,244	24,383
Danmark	10,265	10,514	9,930	9,757	9,991	9,810	9,617	9,175	9,393	9,093	8,465	8,791	8,412	7,546	6,589	6,515	6,657	5,923	4,947	4,153
Deutschland	505,535	516,797	505,591	516,415	512,141	493,158	501,094	497,319	521,127	504,074	494,775	476,404	462,170	440,109	433,430	422,322	431,419	409,047	395,011	371,170
Eesti	2,131	1,289	1,502	1,832	1,897	1,547	1,837	1,989	1,690	1,843	2,443	2,868	2,539	2,875	3,023	3,509	3,270	2,398	1,931	1,719
Irland	9,877	10,189	9,833	10,231	12,679	13,495	13,298	12,955	12,510	12,224	10,405	9,206	8,430	7,953	9,477	8,532	7,806	7,865	7,865	7,851
Ελλάδα (Elláda)	28,949	30,284	29,910	30,297	31,180	32,755	33,464	33,721	32,706	30,763	26,336	22,459	20,737	20,179	22,048	20,675	19,766	19,010	18,664	19,108
España	148,450	129,949	118,065	114,525	122,277	124,955	126,152	142,302	143,741	150,526	149,600	146,917	150,634	138,383	132,809	143,450	142,522	130,947	124,966	120,344
France	205,968	198,103	189,020	180,832	181,403	170,117	169,578	168,535	167,572	162,117	153,505	137,426	115,602	108,429	108,076	102,125	103,201	93,798	90,934	84,461
Italia	240,714	241,106	216,111	239,184	259,571	272,115	270,966	293,842	322,999	360,013	373,286	378,492	356,475	343,179	334,858	332,955	325,850	310,745	307,258	302,735
Κύπρος (Κυπρος)/Kıbrıs	4,164	4,731	4,196	4,374	4,519	4,516	4,490	3,916	3,712	3,586	3,528	3,526	3,411	3,176	2,296	2,589	2,155	1,963	1,723	1,762
Latvija	4,543	3,766	3,721	4,380	4,903	4,324	4,674	5,414	5,244	5,449	5,852	6,300	6,639	6,416	5,600	5,400	6,085	5,408	3,930	4,023
Lietuva	6,638	4,251	4,555	4,146	4,508	5,223	6,198	7,667	7,696	6,960	7,103	7,428	7,266	7,862	8,467	8,252	8,043	5,818	4,459	4,230
Luxembourg	1,639	1,656	1,642	1,575	1,660	1,538	1,498	1,500	1,500	1,255	1,176	1,728	1,052	989	1,043	1,089	1,326	1,239	1,156	1,059
Magyarország	32,676	32,577	25,430	26,961	25,886	23,939	24,757	26,392	24,670	22,698	24,149	25,978	26,627	28,054	27,505	27,977	27,452	25,369	23,271	20,917
Malta	596	698	644	777	666	741	772	853	1,146	1,184	1,231	1,312	1,188	1,281	1,143	1,181	1,195	1,172	767	764
Nederland	47,278	48,069	47,728	49,215	50,711	48,983	49,116	49,543	51,097	46,084	42,810	40,682	37,976	33,302	31,828	28,559	30,350	27,525	22,889	12,457
Österreich	49,721	49,721	46,416	46,570	44,405	43,507	45,497	45,168	48,565	48,484	56,265	56,684	56,878	55,857	53,234	51,930	53,211	50,521	49,158	45,858
Polska	65,242	61,047	58,812	64,573	70,226	71,419	83,169	77,560	68,449	71,638	68,195	67,502	63,905	64,667	61,196	59,121	63,224	62,097	56,047	48,953
Portugal	68,793	70,274	66,087	61,585	65,202	65,997	65,934	66,342	65,082	59,696	56,839	56,379	55,068	51,850	49,096	47,018	46,198	43,824	46,414	46,365
România	7,789	6,960	8,302	8,198	7,716	7,504	7,451	7,221	6,768	6,315	21,620	21,276	19,670	21,550	23,200	26,128	29,604	36,177	35,524	32,414
Slovenija	6,938	7,394	7,762	7,921	7,976	7,798	8,669	7,318	8,980	11,574	13,222	14,404	17,007	18,944	14,783	16,607	16,404	12,742	12,306	10,498
Slovensko	9,706	11,500	11,418	10,994	11,573	11,648	12,573	12,902	11,466	10,094	10,839	10,263	11,321	11,190	10,452	10,706	11,237	10,951	8,411	8,119
Suomi/Finland	11,547	9,899	7,806	8,080	10,191	9,299	8,957	9,097	9,052	8,508	8,411	8,156	9,088	8,791	8,983	8,580	8,446	8,513	8,057	7,673
Sverige	21,057	20,727	19,741	21,083	21,173	20,810	21,280	21,356	21,964	22,032	22,330	24,747	27,103	26,582	26,459	26,636	26,749	26,248	25,219	23,305
United Kingdom	316,929	317,638	313,278	323,646	318,647	329,413	336,758	321,791	316,887	316,874	317,306	305,958	297,274	286,979	275,840	264,288	254,160	237,811	229,576	207,690
	1,907,125	1,894,423	1,811,261	1,861,362	1,894,225	1,885,557	1,920,045	1,937,278	1,978,197	1,945,284	1,986,645	1,936,923	1,867,724	1,796,519	1,747,368	1,719,088	1,722,548	1,631,207	1,571,534	1,473,443

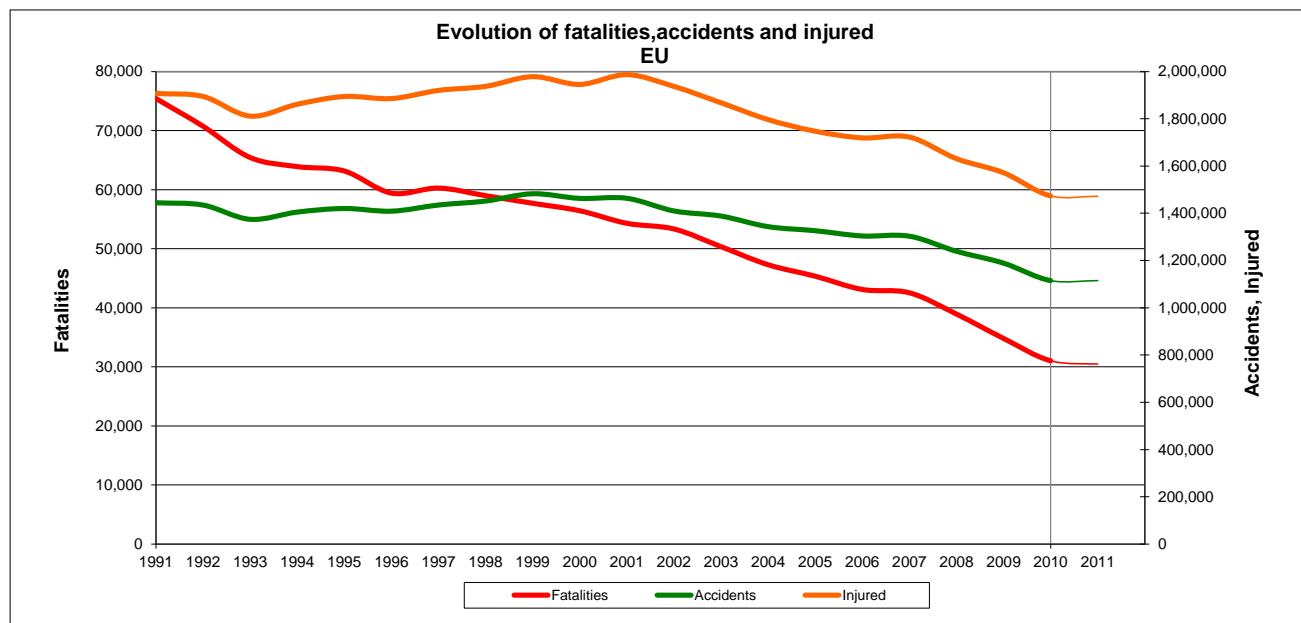
Source : CARE (EU road accidents database) or national publications

European Commission / Directorate General Energy and Transport



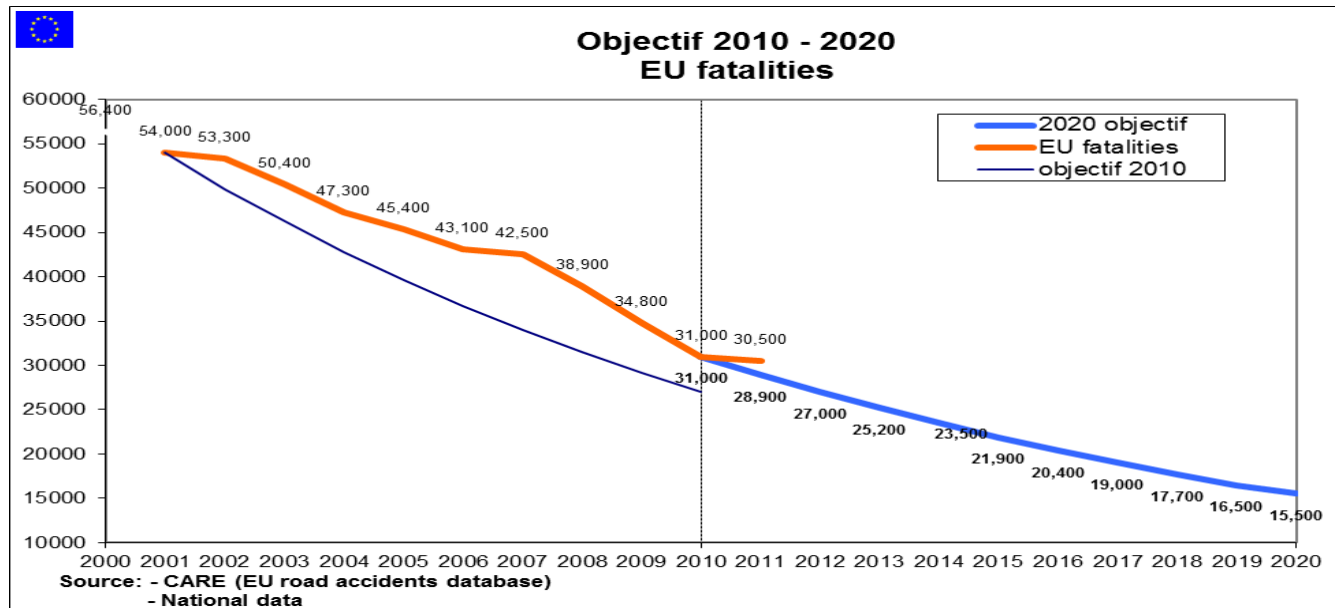
Road safety evolution in EU

Mars 2012



Source : CARE (EU road accidents database) or national publications

European Commission / Directorate General Energy and Transport



Source : CARE (EU road accidents database) or national publications

European Commission / Directorate General Energy and Transport

