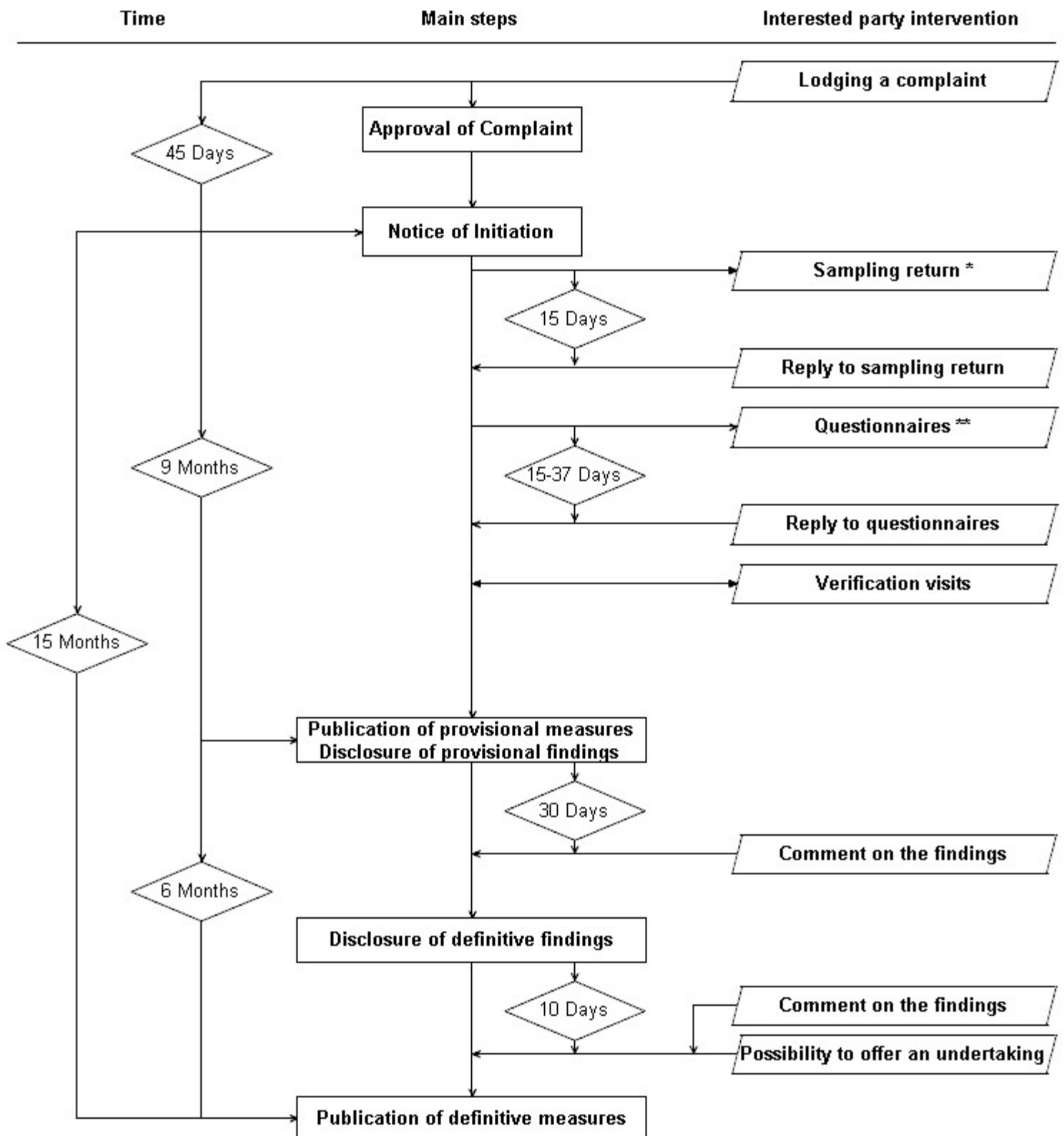


Anti-dumping Article 5 Investigation



* Sampling may be applied where the number of complainants, exporters and importers is large in order to limit the investigation to a reasonable number of parties.

** Questionnaires to exporters, EU producers, importers and EU users. Deadline for reply is minimum 37 days.

MET/IT questionnaire for exporting producers in countries considered as countries with economy in transition. Deadline for reply of MET/IT questionnaires is minimum 15 days.

For exporting producers not granted MET an analogue country will be applied for the purpose of establishing the normal value.

Producers in the analogue country will also receive questionnaires and be subject to verification visits.

Countries with economy in transition are China, Kazakhstan and Vietnam.