



EUROPEAN COMMISSION
DIRECTORATE-GENERAL FOR ENERGY AND TRANSPORT
DIRECTORATE B – Transport Logistics, TEN-T and Comodality
B1: External Transport Relations and Trans-European Transport Networks

TENtec iReport

User Manual

Date: 21/11/2008
Version: 1.0
Authors: Thomas Gascoigne
Revised by: Helmut Morsi
Approved by: Jean –Eric Paquet
Public:
Reference Number:

TABLE OF CONTENTS

1. INTRODUCTION.....	4
2. TENTEC IREPORT – INSTALLATION PROCEDURE.....	4
2.1. Downloading TENtec iReport	4
2.2. Windows installation and requirements.....	4
2.3. Linux installation and requirements.....	4
2.4. TENtec helpdesk.....	5
3. WORKING WITH THE IMPLEMENTATION REPORT	5
3.1. Setting the Member State	5
3.2. Creating file.....	6
3.3. Opening and closing file	7
3.4. Opening a form.....	7
3.5. Saving the report	7
3.6. Form validation	8
3.7. iReport validation system.....	9
3.8. Printing implementation report.....	9
3.9. Submitting implementation report.....	10
3.10. Configuration.....	12
4. STRUCTURE OF THE IMPLEMENTATION REPORT	12
4.1. Form A – General Questionnaire	12
4.1.1. Form A1 – National Transport Policy	12
4.1.2. Form A2 Investments on the Entire TEN-T Network	15
4.1.3. Form A3 – Traffic Management Systems	16
4.1.4. Form A4 – Priority Projects.....	17
4.1.5. Form A5 – Motorways of the Sea	18
4.2. Form B – TEN-T Priority Projects Investments Questionnaire.....	21
4.2.1. General.....	21
4.2.2. 'General Information' tab	22
4.2.3. 'Implementation Period and Maturity' tab.....	22
4.2.4. 'Investments' tab.....	23

Document History

Version	Date	Comment	Modified Pages
0.0	19/11/2008	Document created by Thomas Gascoigne	
0.1	21/11/08	Reviewed by Jesús M. Milán Franco	4, 5, 7, 11, 16, 18, 20
0.2	21/11/08	Revised by Helmut Morsi	1, 4, 7

1. INTRODUCTION

The TENtec iReport module is part of the TENtec Information System whose overall objective is to create a central TEN-T database and portal that enables monitoring of all TEN-T projects and related issues (e.g. cohesion funds on TEN-T and EIB), close working level cooperation between COM and TEN-T EA, modelling of future transport scenarios and the bi-directional communication between the Member States and the European Commission (open method of coordination).

The iReport module allows the electronic submission of data for the implementation report 2009.

The iReport module creates a file with an encrypted implementation report including an imbedded unique reference number which acts as a security check. This reference number is obligatory for a submission. This file should be sent attached to a normal e-mail to the following address:

tren-tentec@ec.europa.eu

2. TENTEC IREPORT – INSTALLATION PROCEDURE

2.1. Downloading TENtec iReport

Versions of the TENtec iReport application for both Windows and linux can be downloaded from the following link:

http://ec.europa.eu/ten/transport/projects/index_en.htm

2.2. Windows installation and requirements

To install the TENtec iReport application, just unzip the .zip file to the root of the C: drive. The unzip application will create a new folder (C:\TENtecIReport) where the application will be unzipped.

To run the application, double click on the .exe file (TENtec_iReport.exe) in the folder C:\TENtecIReport.

The minimum requirements to run in a Windows environment are:

- Windows XP
- Java Runtime Environment 1.6.0.

2.3. Linux installation and requirements

To install the TENtec iReport application, just unzip the .tar.gz file to the home directory. A new folder home/TENtecIReport will be created.

To run the application, double click on the iReport.sh file in the folder home/TENtecIReport.

The requirements to run in a linux environment are:

- Java Runtime Environment 1.6.0.

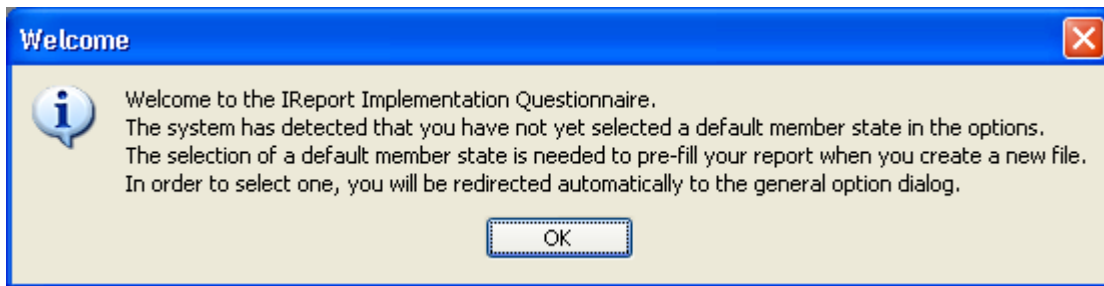
2.4. TEntec helpdesk

There is a helpdesk available for technical assistance relating to the use of the iReport application. It is possible to reach the helpdesk by telephone (+32 22976112) or by mail (tentec@ec.europa.eu).

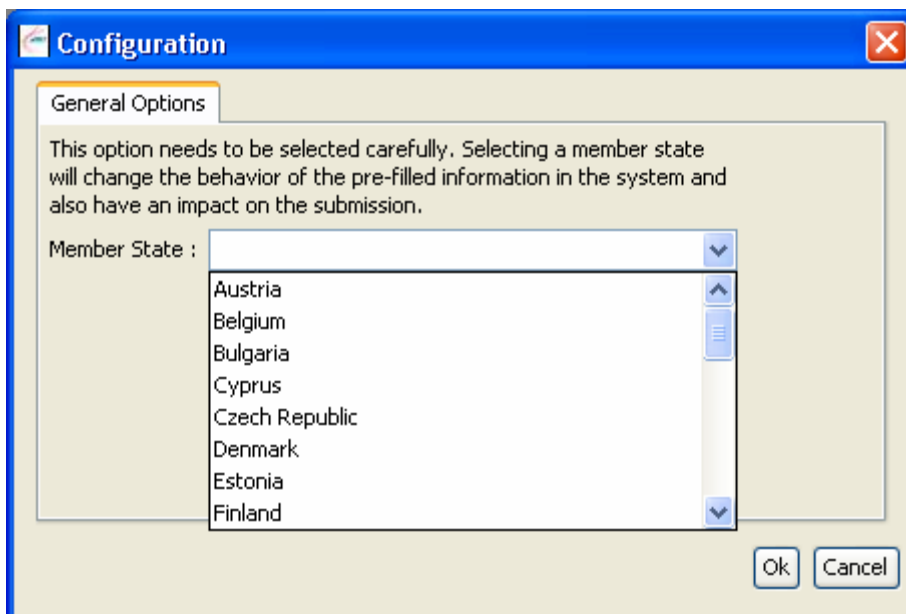
3. WORKING WITH THE IMPLEMENTATION REPORT

3.1. Setting the Member State

Before using the application, it is necessary to configure some parameters. The first time that the iReport application is run the following dialogue box will be displayed:



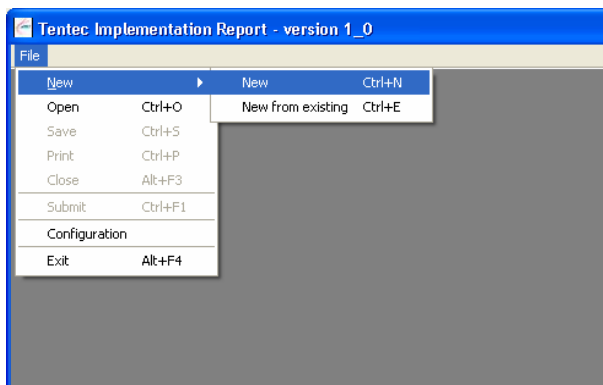
Clicking on **OK** allows the user to select the Member State for the pre-filling of the form data in the following dialogue box:



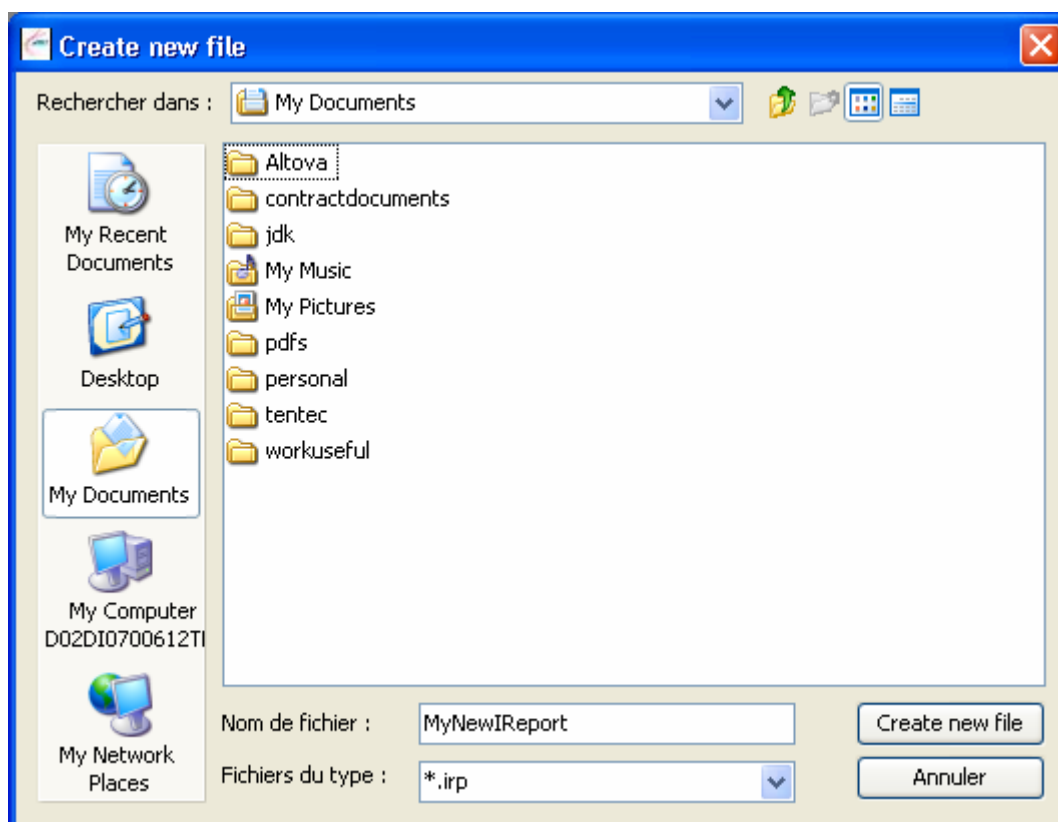
3.2. Creating file

There are 2 ways to create a new application form the TENCtec iReport application:

- (1) To create a new application from scratch with the menu option **File à New** or the shortcut **Ctrl+N**.
- (2) To create a new application using the data from an existing one with the menu option **File à New from existing file** or the shortcut **Ctrl+E**.

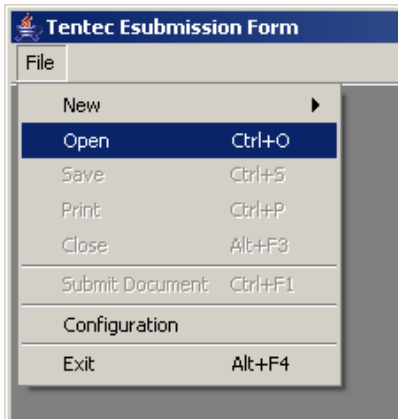


- (3) Selecting **File à New** causes the Create new file dialogue box to open as shown below. You should give the file a name and navigate to the location on your file system where you wish to save the file. Note that the file is given the extension **'.irp'** that identifies it as an iReport file.



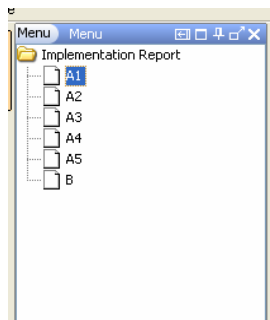
3.3. Opening and closing file

If you are working with an existing application, you can open or close the file by using the menu option **File à Open** or **File à Close**. It also is possible to use the shortcuts **Ctrl+O** for **Open** and **ALT+F3** for **Close**.



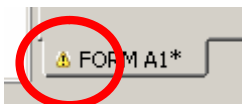
3.4. Opening a form

The application is made of two parts: Part A (General Questionnaire) and Part B (TEN-T Priority Projects Investments Questionnaire). The Part A contains six forms: Form A1 (National Transport Policy), Form A2 (Investments on the Entire TEN-T Network), Form A3 (Traffic Management Systems), Form A4 (Priority Projects), Form A5 (Motorways of the Sea). The Part B contains one form by section/sub-section with the information related to the section/subsection. Note that in case of a section divided into several subsections, it is only necessary to provide the information for the subsections.. The menu section on the right hand side of the application window displays an icon for each form. To open a form, double-click on the form icon.

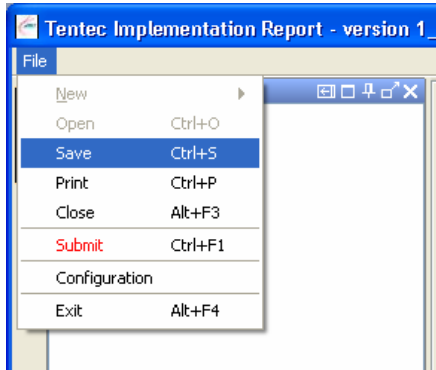


3.5. Saving the report

Every time a form is modified the file should be saved. When a form includes unsaved information a warning flag appears close to the name of the form.

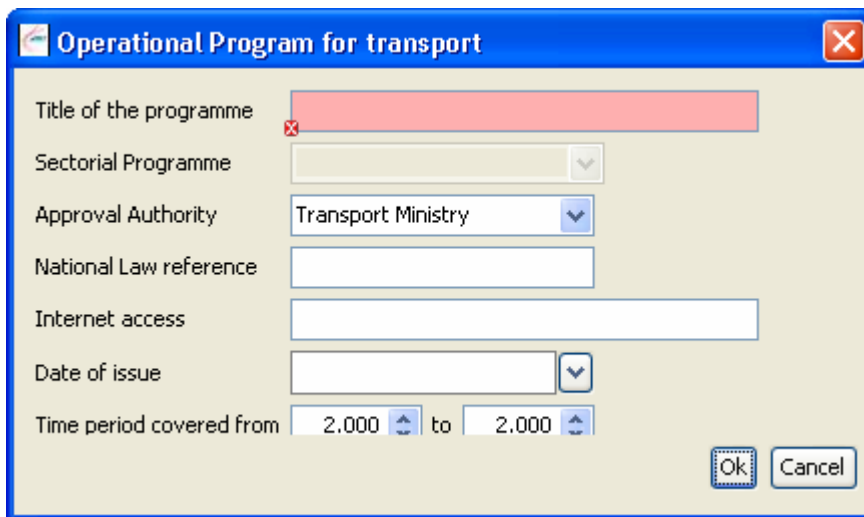


All forms are saved through the menu option **File à Save** or the shortcut **Ctrl+S**.



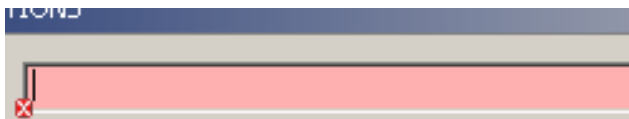
3.6. Form validation

Every time a section of the application is saved, the validation system will show all the errors or warning messages on the corresponding field in the form.



There are 2 levels of error in the form validation:

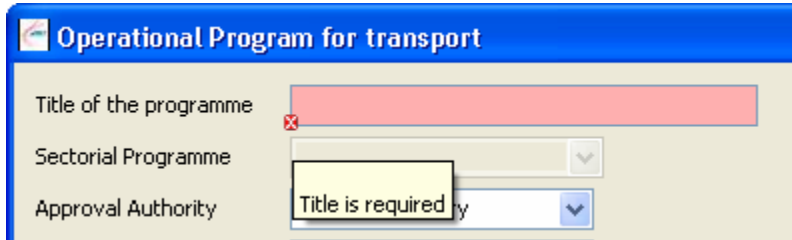
- **ERROR level:** This level displays an error message on a field. It disables the save operation if any error appears on the screen. You have to correct the value in order to be able to save the form.



- **WARNING level:** This level just displays a warning message on a field. It allows you to save the form even if a warning message appears and return back to correct this field later if you wish.



In order to know the warning or the error message linked to the field, point the mouse pointer to the error or warning icon appearing on the left of the field. A tooltip message will appear with the corresponding error or warning.



3.7. iReport validation system

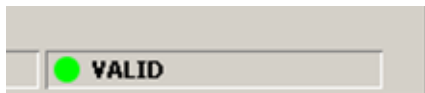
In order to guide you during the creation of the implementation report, you can consult the validation status bar of iReport shown below:



The iReport validation status bar appears in the bottom right of screen. A red circle sign indicates that the implementation report still contains errors and the number of errors the validation system found.

To consult the error messages from the validation system, just click on the iReport validation status bar or the 'Validation Messages' menu.

If an error is corrected on a form, it will disappear from this list. At the end, you should have a valid implementation report. If your implementation report is valid the validation system will display a green circle with the following message 'VALID'.

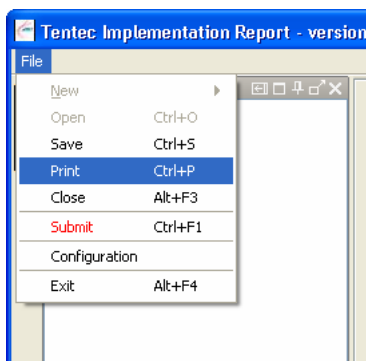


In order to close the validation message panel, click on the cross on the right side of the panel.

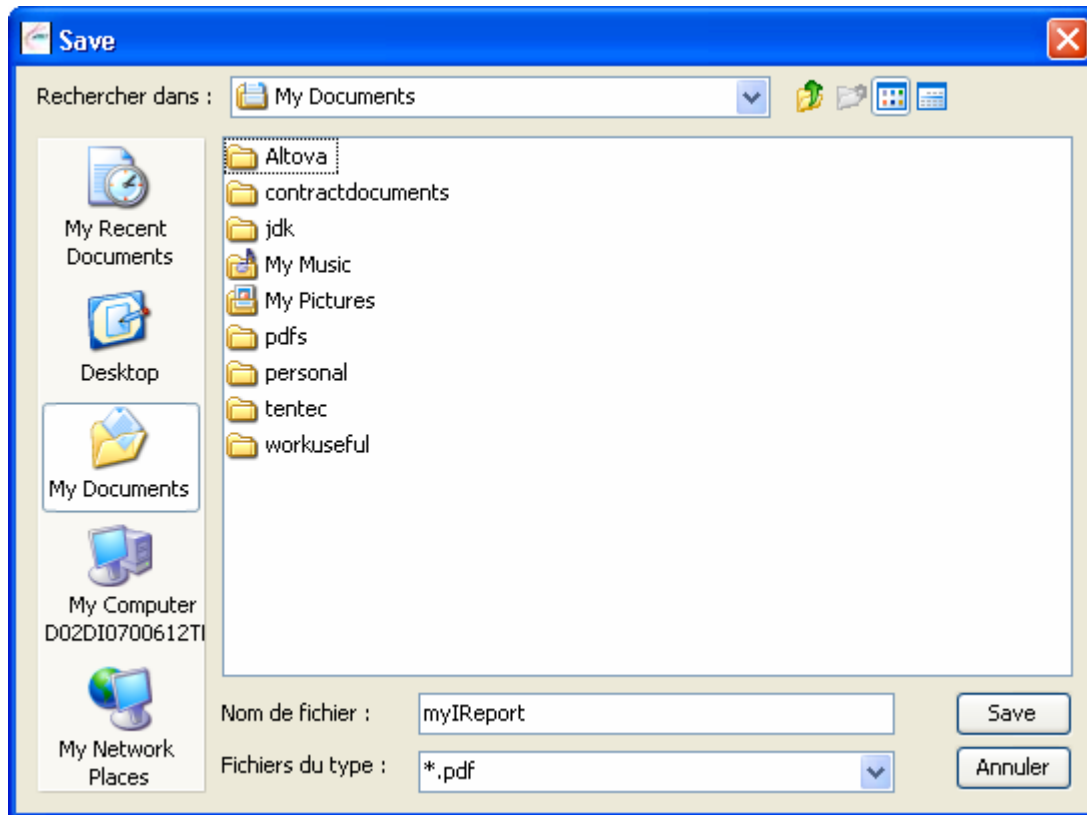


3.8. Printing implementation report

After the file is created, it is possible to print the implementation report even if not all the implementation report fields are fully filled. This is done using the menu option **File à Print** or the shortcut **Ctrl+P**.

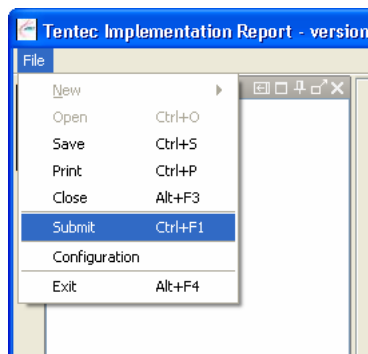


The printout creates a PDF file that it is necessary to save. The system will ask you to enter a file name and/or a directory in order to create the PDF file containing the printout.



3.9. Submitting implementation report

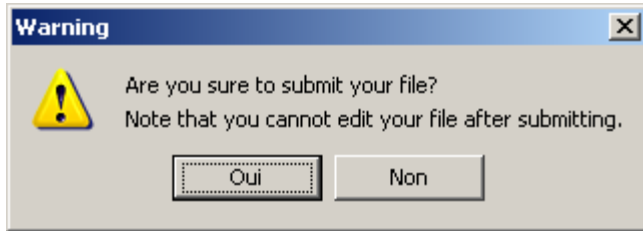
In order to submit the implementation report, use the menu option **File à Submit** or the shortcut **Ctrl+F1**.



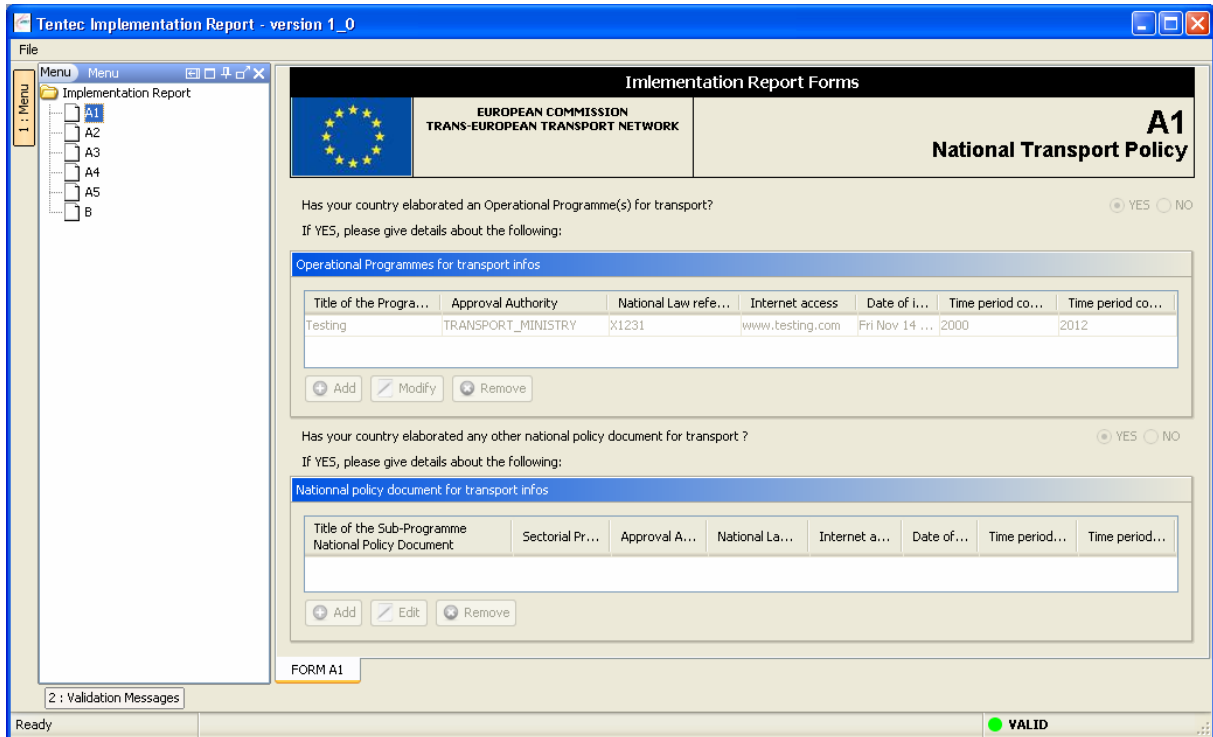
Note that the "Submit" option appears only if the application is fully validated by the iReport validation system and if the report has not already been submitted.

Warning: if you submit an implementation report you will not be able to modify data after this operation. On the submitted report only the open, close and print operations will be available.

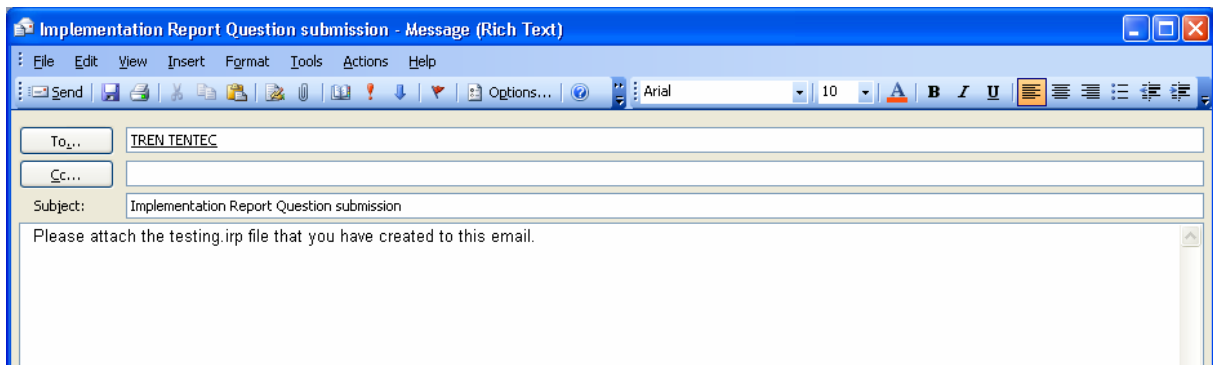
The system will display the following warning, click on "Yes" if you are ready to submit your application.



After submitting the report, you can view the data but each form is read-only.



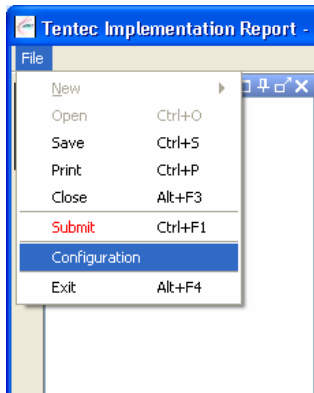
After submission of the implementation report the iReport application will open the following mail window:



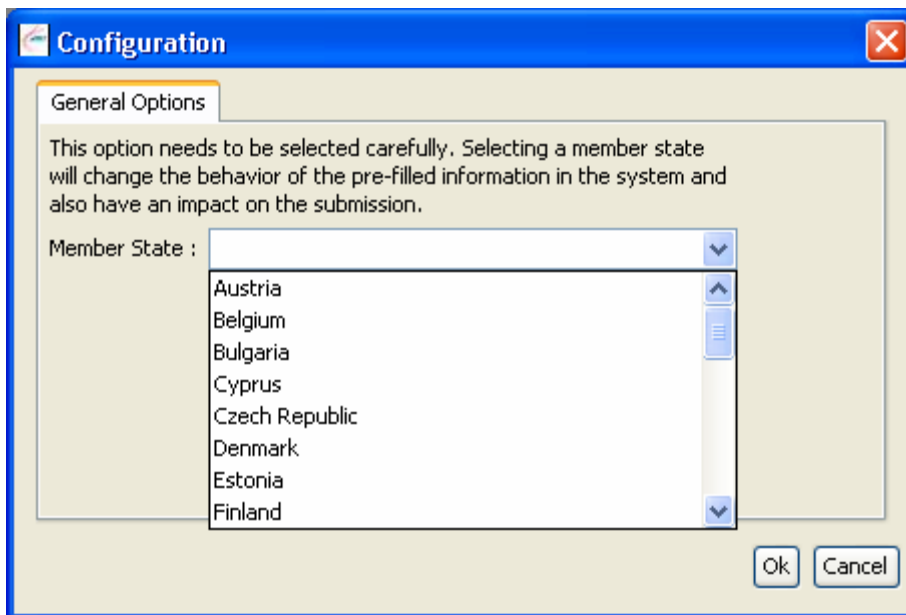
The email address is pre-filled and the mail body contains the name of the '.irp' file that stores the implementation report data. This file should be attached to the mail before it is sent. It is intended that a future version of iReport will automatically attach the file.

3.10. Configuration

The configuration menu option allows the Member State to be changed, use the menu option **File** à **Configuration**.



The following dialogue box appears allowing the user to select a Member State:



4. STRUCTURE OF THE IMPLEMENTATION REPORT

This section will describe the structure of the implementation report and the information needed in every form.

4.1. Form A – General Questionnaire

4.1.1. *Form A1 – National Transport Policy*

This form contains information about the Operational Programme(s) for transport and the National Policy Document(s) for transport:

Implementation Report Forms

EUROPEAN COMMISSION
TRANS-EUROPEAN TRANSPORT NETWORK

A1
National Transport Policy

Has your country elaborated an Operational Programme(s) for transport? YES NO
If YES, please give details about the following:

Operational Programmes for transport infos

Title of the Programme	Approval Authority	National Law reference	Internet access	Date of issue	Time period covered from	Time period covered to
Programme 1	TRANSPORT_MINIS...	A1000	www.myministry....	Mon Nov 24 00... 2000		2008

Add Modify Remove

Has your country elaborated any other national policy document for transport? YES NO
If YES, please give details about the following:

National policy document for transport infos

Title of the Sub-Programme	Sectorial Progra...	Approval Autho...	National Law refere...	Internet acc...	Date of is...	Time period covered f...	Time period covere...
----------------------------	---------------------	-------------------	------------------------	-----------------	---------------	--------------------------	-----------------------

Add Edit Remove

FORM A1*

2 : Validation Messages

Ready VALID

To add a new Operational Programme click on the **Add** button from the first table above and fill in the fields shown in the dialogue box below:

Operational Program for transport

Title of the programme: Programme 2

Sectorial Programme: [dropdown]

Approval Authority: Government

National Law reference: A1001

Internet access: www.mygovernment.com

Date of issue: lun. 24/11/2008

Time period covered from: 2.000 to 2.008

Ok Cancel

Click **OK** and a new row should appear in form A1:

Tentec Implementation Report - version 1_0

Implementation Report Forms

EUROPEAN COMMISSION
TRANS-EUROPEAN TRANSPORT NETWORK

A1
National Transport Policy

Has your country elaborated an Operational Programme(s) for transport? YES NO

If YES, please give details about the following:

Operational Programmes for transport infos

Title of the Programme	Approval Authority	National Law reference	Internet access	Date of issue	Time period covered from	Time period covered to
Programme 1	TRANSPORT_MINIS...	A1000	www.myministry....	Mon Nov 24 00... 2000	2000	2008
Programme 2	GOVERNMENT	A1001	www.mygovernm...	Mon Nov 24 00... 2000	2000	2008

Has your country elaborated any other national policy document for transport ? YES NO

If YES, please give details about the following:

National policy document for transport infos

Title of the Sub-Programme	Sectorial Progra...	Approval Autho...	National Law refere...	Internet acc...	Date of is...	Time period covered f...	Time period covere...
----------------------------	---------------------	-------------------	------------------------	-----------------	---------------	--------------------------	-----------------------

FORM A1*

2 : Validation Messages

Ready VALID

To modify or remove an existing Operational Programme, select a row by clicking on it in the table. When it is highlighted as shown in the following screenshot, the **Modify** or **Remove** option can be clicked:

Tentec Implementation Report - version 1_0

Implementation Report Forms

EUROPEAN COMMISSION
TRANS-EUROPEAN TRANSPORT NETWORK

A1
National Transport Policy

Has your country elaborated an Operational Programme(s) for transport? YES NO
If YES, please give details about the following:

Operational Programmes for transport infos

Title of the Programme	Approval Authority	National Law reference	Internet access	Date of issue	Time period covered from	Time period covered to
Programme 1	TRANSPORT_MINIS...	A1000	www.myministry....	Mon Nov 24 00... 2000	2000	2008
Programme 2	GOVERNMENT	A1001	www.mygovernment...	Mon Nov 24 00... 2000	2000	2008

Add Modify Remove

Has your country elaborated any other national policy document for transport? YES NO
If YES, please give details about the following:

National policy document for transport infos

Title of the Sub-Programme	Sectorial Progra...	Approval Autho...	National Law refere...	Internet acc...	Date of is...	Time period covered f...	Time period covere...
----------------------------	---------------------	-------------------	------------------------	-----------------	---------------	--------------------------	-----------------------

Add Edit Remove

FORM A1*

2 : Validation Messages

Ready VALID

National Policy Document(s) for transport can be added, modified or removed in an identical manner using the lower table of form A1.

4.1.2. *Form A2 – Investments on the Entire TEN-T Network*

Form A2 contains the data for investments amounts for the various transport modes:

Tentec Implementation Report - version 1_0

Implementation Report Forms

EUROPEAN COMMISSION
TRANS-EUROPEAN TRANSPORT NETWORK

A2
Investments

Please, mention the up to date expenditures and the foreseen investments for transport infrastructure within the period covered by the Operational Programme per mode (in Euros).

Transport Mode Infrastructure	Expenditure before 2003	Expenditure 2004	Expenditure 2005	Expenditure 2006	Expenditure 2007	Expenditure 2008 (estimated)	Foreseen Investment 2009	Foreseen Investment 2010-2013	Foreseen Investment 2014-2020
Railways	17 799 900 000 €	3 511 590 000 €	3 477 380 000 €	3 656 420 000 €	4 152 250 000 €	2 922 870 000 €	2 922 890 000 €	12 035 070 000 €	10 434 430 000 €
Roads	14 152 900 000 €	820 940 000 €	747 930 000 €	628 910 000 €	384 110 000 €	271 780 000 €	189 480 000 €	266 300 000 €	73 290 000 €
Inland Waterways	2 430 400 000 €	794 940 000 €	799 140 000 €	540 060 000 €	543 060 000 €	564 390 000 €	564 390 000 €	1 714 010 000 €	2 461 450 000 €
Seaports	2 317 200 000 €	169 710 000 €	139 780 000 €	288 080 000 €	614 300 000 €	467 930 000 €	398 330 000 €	491 890 000 €	10 250 000 €
Airports	5 439 600 000 €	1 820 000 €	3 160 000 €	4 470 000 €	13 160 000 €	25 550 000 €	49 930 000 €	48 040 000 €	0 €
Other	0 €	0 €	3 630 €	3 450 €	350 €	870 €	0 €	0 €	0 €
Total	42 140 000 000 €	5 295 000 000 €	5 167 393 630 €	5 117 943 450 €	5 706 880 350 €	4 252 520 000 €	4 125 020 000 €	14 555 310 000 €	12 979 420 000 €

FORM A1 FORM A2

2 : Validation Messages

Ready VALID

This form contains differently coloured columns and is pre-filled with data that has been previously provided. The different columns colours have the following meanings:

- **Yellow** - represents expenditure data from previous periods. This data should be verified as being correct and modified if required.
- **White** – represents expenditure data that is required for the current report period. These columns may be pre-filled with estimated amounts from a previous report. This data should be supplied or modified as necessary if pre-filled.
- **Blue** – represents estimated amounts for future report periods. These columns may be pre-filled with estimates from a previous report. This data should be supplied or modified as necessary if pre-filled.

Data is entered into a cell by double-clicking on the required cell or pressing the F2 key on a highlighted cell. After entering data press the F2, Tab or Enter key.

A useful shortcut to use with all the expenditure tables is **Ctrl+R**, which resizes all columns so that all data is visible in the columns. A horizontal scrollbar is added to view columns which do not fit on the screen.

Note that all the amounts must be in EUR.

4.1.3. Form A3 – Traffic Management Systems

Form A3 contains a report and investment amounts relating to traffic management systems for the various transport modes:

Tentec Implementation Report - version 1_0

File

Menu

Implementation Report

- A1
- A2
- A3
- A4
- A5
- B

Implementation Report Forms

EUROPEAN COMMISSION
TRANS-EUROPEAN TRANSPORT NETWORK

A3
Traffic Management Systems

Please, report in brief (no more than 2000 characters per mode) on the implementation of Traffic Management Systems on your country's transport network, which belongs to the TEN-T

Railways Roads Inland Waterways Maritime traffic Air traffic Other

Please, mention the up to date expenditures and the foreseen investments for Traffic Management Systems (in Euros)

Traffic Management Systems	Expenditu before 2003	Expendit 2004	Expendit 2005	Expendit 2006	Expendit 2007	Expendit 2008 (estimate)	Foresee Investme 2009	Foresee Investme 2010-20	Foresee Investme 2014-2020
Railways	0 €	0 €	0 €	0 €	0 €	0 €	0 €	0 €	0 €
Roads	0 €	0 €	0 €	0 €	0 €	0 €	0 €	0 €	0 €
Inland Waterways	0 €	0 €	0 €	0 €	0 €	0 €	0 €	0 €	0 €
Seaports	0 €	0 €	0 €	0 €	0 €	0 €	0 €	0 €	0 €
Airports	0 €	0 €	0 €	0 €	0 €	0 €	0 €	0 €	0 €
Other	0 €	0 €	0 €	0 €	0 €	0 €	0 €	0 €	0 €
Total	0 €	0 €	0 €	0 €	0 €	0 €	0 €	0 €	0 €

FORM A1 FORM A2 FORM A3*

2 : Validation Messages

Ready

VALID

Enter report data as necessary by clicking on the transport mode tabs. The investments table at the bottom of this form is completed in a similar manner to that described in section 4.1.2.

Note that all the amounts must be in EUR.

4.1.4. *Form A4 – Priority Projects*

Form A4 contains investments amounts relating to priority projects for the various transport modes:

Tentec Implementation Report - version 1_0


File

Menu Mer [Icons]

Implementation Report

- A1
- A2
- A3
- A4**
- A5
- B

Implementation Report Forms

 **EUROPEAN COMMISSION**
TRANS-EUROPEAN TRANSPORT NETWORK

A4
Priority Projects

Please, mention the priority projects (Reference: Decisions 1692/96/EC, and Decision 884/2004/EC) related to your country. Please mention the foreseen investments for these priority projects (in Euros)

Priority Project	Expendit. before 2003	Expendit. 2004	Expendit. 2005	Expendit. 2006	Expendit. 2007	Expendit. 2008 (estimate)	Foresee Investme 2009	Foresee Investme 2010-201	Foresee Investme 2014-202
Railways	0 €	0 €	0 €	0 €	0 €	0 €	0 €	0 €	0 €
Roads	0 €	0 €	0 €	0 €	0 €	0 €	0 €	0 €	0 €
Inland Waterways	0 €	0 €	0 €	0 €	0 €	0 €	0 €	0 €	0 €
Seaports	0 €	0 €	0 €	0 €	0 €	0 €	0 €	0 €	0 €
Airports	0 €	0 €	0 €	0 €	0 €	0 €	0 €	0 €	0 €
Other	0 €	0 €	0 €	0 €	0 €	0 €	0 €	0 €	0 €
Total	0 €	0 €	0 €	0 €	0 €	0 €	0 €	0 €	0 €

FORM A1 FORM A2 FORM A3 **FORM A4**

2 : Validation Messages

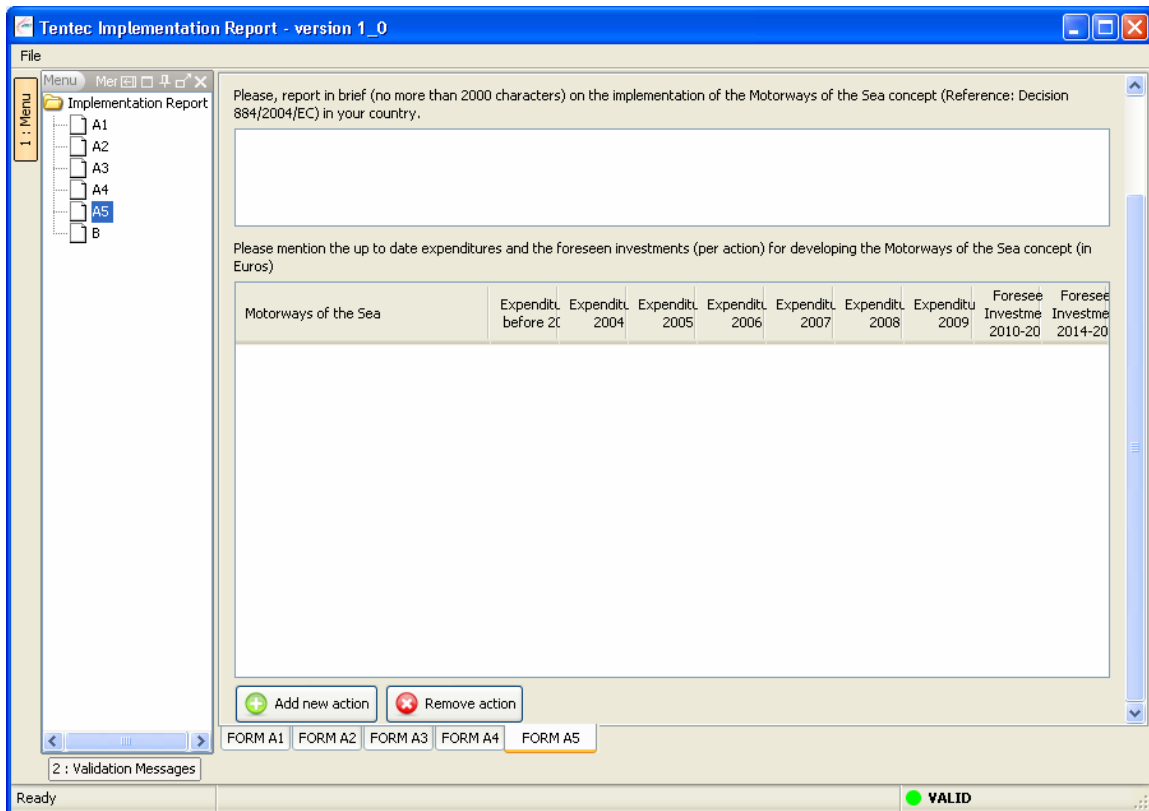
Ready ● VALID

The investments table is completed in a similar manner to that described in section 4.1.2.

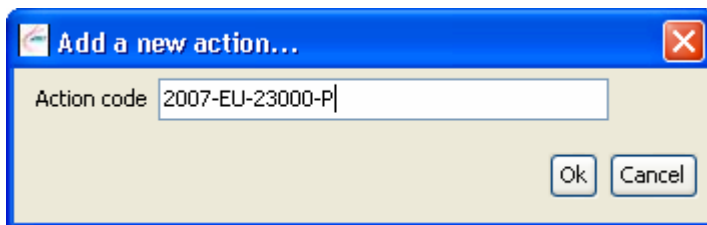
Note that all the amounts must be in EUR.

4.1.5. Form A5 – Motorways of the Sea

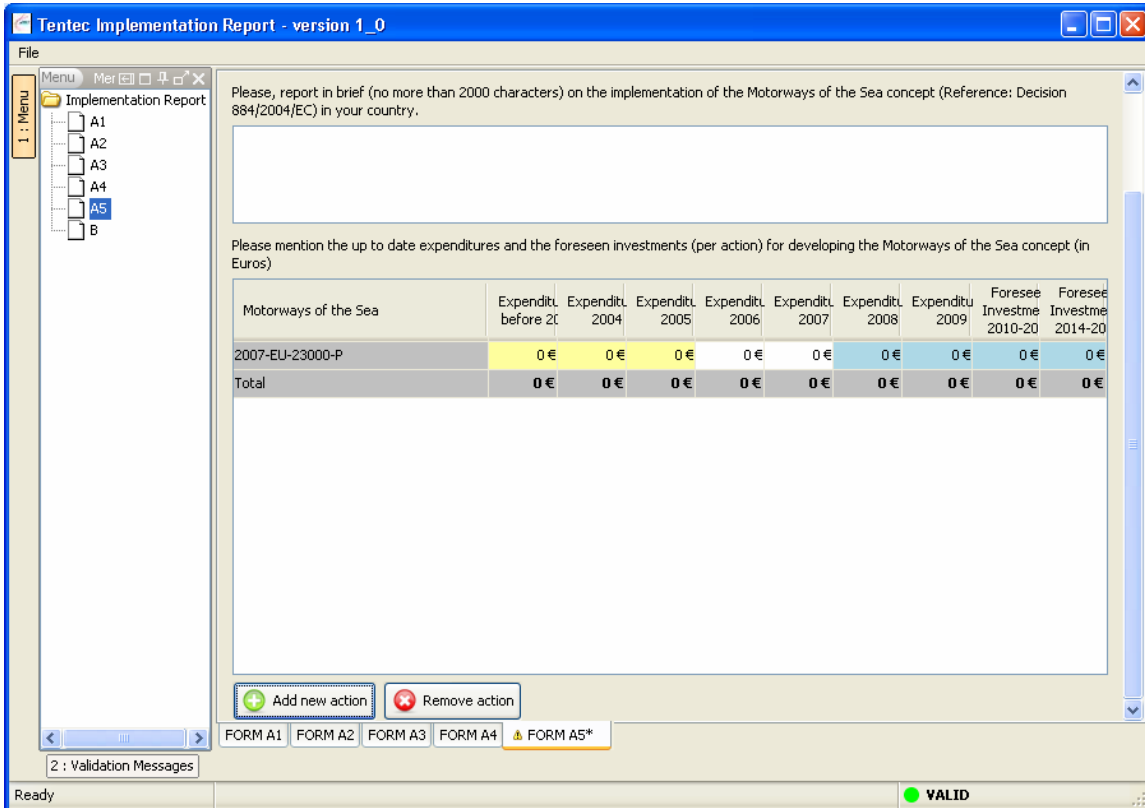
Form A5 contains a report and a table of investment expenditures broken down by action for motorways of the sea:



To add a new action clicks the **Add new action** button. The following dialogue box appears asking for an action code:



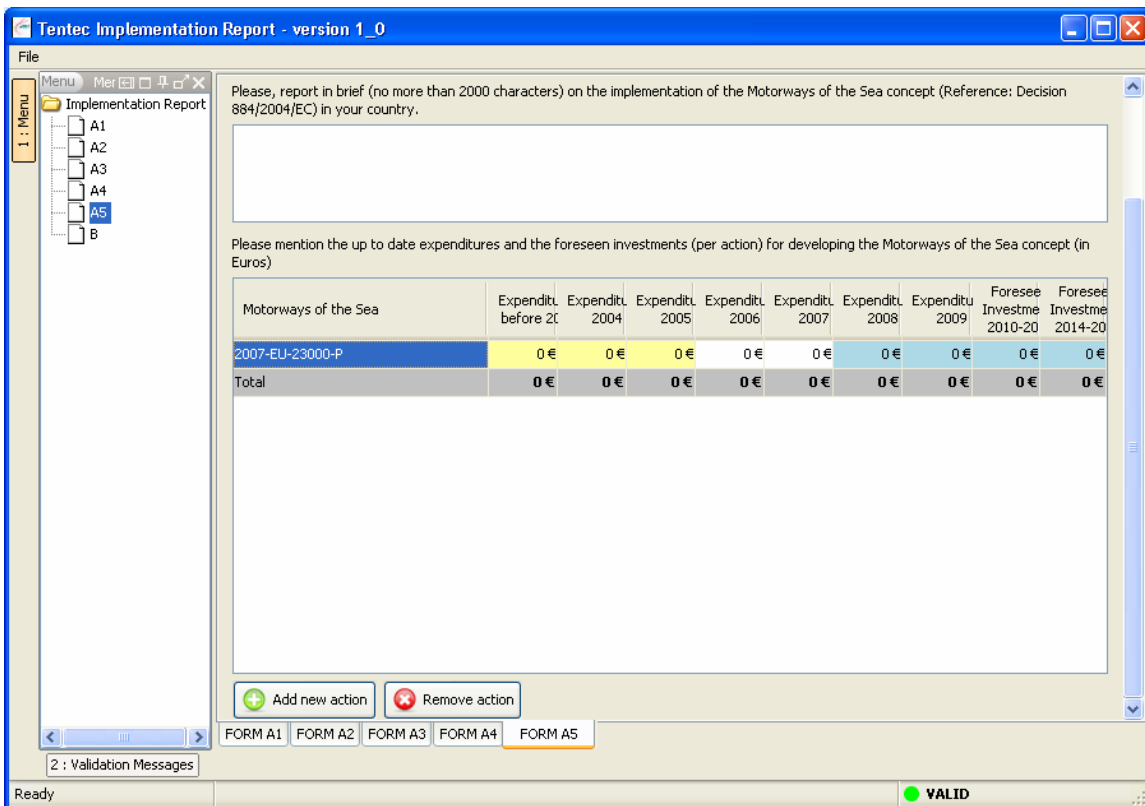
After entering an action code and pressing **Ok**, a new row will appear in the investments table:



The investments table is completed in a similar manner to that described in section 4.1.2.

Note that all the amounts must be in EUR.

To remove an action highlight, the action code as shown and press the **Remove action** button:




4.2. Form B – TEN-T Priority Projects Investments Questionnaire

4.2.1. General

Form B contains the priority project investments for all sections and subsections of the country. This form consists of a vertically scrolling table that contains all sections and subsections for the country. The lower part of the form contains information organised in three tabbed sections relating to the section or subsection that is currently selected in the table above.

The form B is pre-filled with any previous data provided for all sections and subsections. Completion of the form involves entering values where applicable for each tab of each section/subsection. **Note that in case of a section divided into several subsections, it is only necessary to provide the information for the subsections.** To move between sections / subsections it is possible to click the mouse on a row or use the navigation buttons to move up or down:



To help the user know when the form is complete, **it is possible to mark sections / subsections as complete.** This makes it easier to complete the section / subsection information in any order and know when all the information has been provided. It is not necessary to use this function before submitting the implementation report and it only acts as a guide to the user. If the check button is clicked , a checked indicator icon appears to the left of the currently selected section / subsection as shown here:

Section name	PP	SECT
Halle/Leipzig-Nurnberg	0100	0101
Nurnberg - Munchen	0100	0102
Munchen-Kufstein (depending on completion Brenner tunnel)	0100	0103
Brussels-Liège-Cologne	0200	0202
Liège-Aachen (P5)	0200	0202
Aachen-Köln	0200	0202
Köln-Frankfurt am Main *NP	0200	0254
<input checked="" type="checkbox"/> Saarbrücken-Mannheim	0400	0403
Beaudrecourt-Strasbourg-Stuttgart (incl. Kehl bridge)	1700	1701
Strasbourg - Appenweiler (Kehl bridge)	1700	1701
Kehl bridge (Works)	1700	1701
Kehl - Appenweiler (einschl. Bf. Kehl)	1700	1701
Stuttgart-Ulm	1700	1702

	Until end 2006	2007	2008 (estimated)	2009 (forese...)	2010-2013	2014-2020
State budget(s)	201 270 000 €	0 €	0 €	0 €	0 €	142 800 000 €
Regional/local budget(s)	0 €	0 €	0 €	0 €	0 €	0 €
TEN financing	20 330 000 €	10 000 000 €	10 000 000 €	0 €	0 €	0 €
Cohesion Funds	0 €	0 €	0 €	0 €	0 €	0 €
EIB loan	0 €	0 €	0 €	0 €	0 €	0 €
Other loans	0 €	0 €	0 €	0 €	0 €	0 €
Structural funds (ERDF) (Approved)	0 €	0 €	0 €	0 €	0 €	0 €
EBRD	0 €	0 €	0 €	0 €	0 €	0 €
Action promoter (Public or Private)	0 €	0 €	0 €	0 €	0 €	0 €
Other sources	0 €	0 €	0 €	0 €	0 €	0 €

4.2.2. 'General Information' tab

The following screenshot shows form B with the 'General Information' tab active and seven fields to complete:

The screenshot displays the 'Tentec Implementation Report - version 1_0' application window. The main area shows the 'General Information' tab for form B. The table below lists various sections with their corresponding PP and SECT values.

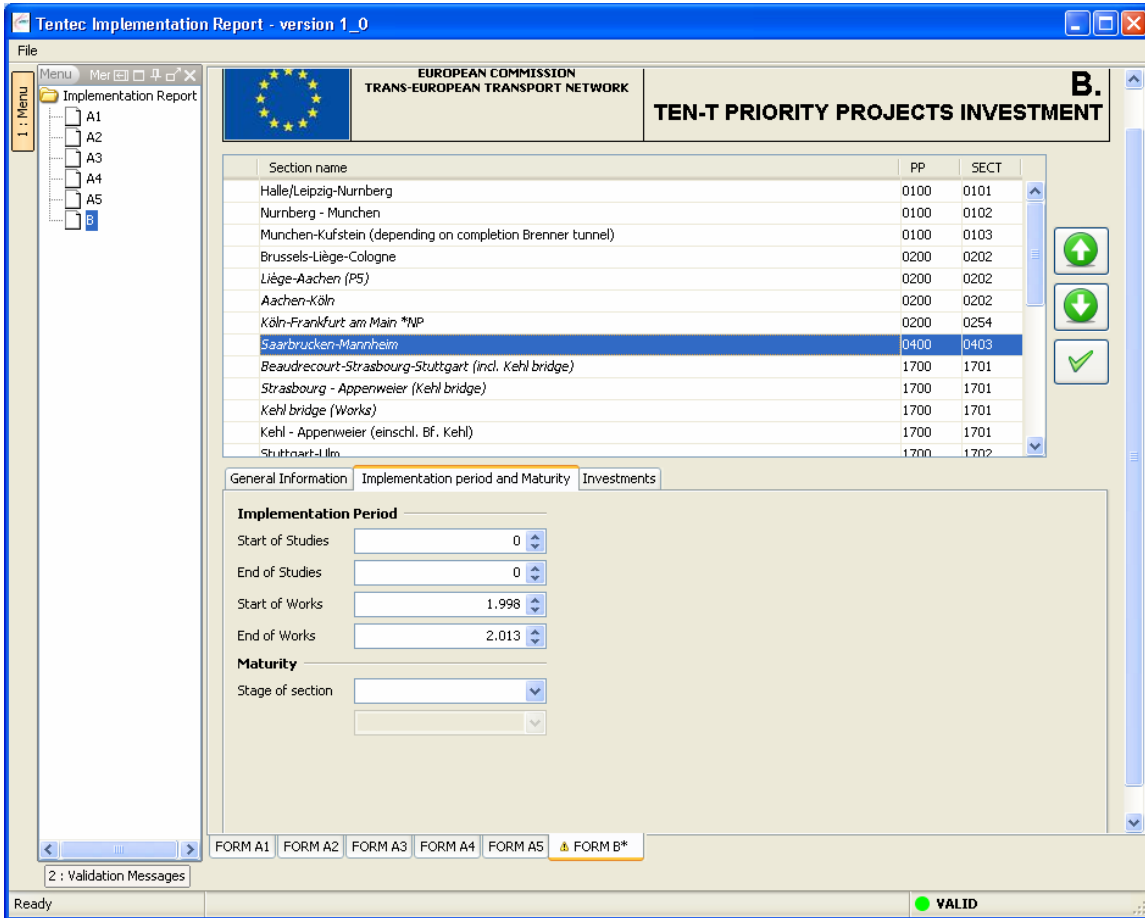
Section name	PP	SECT
Halle/Leipzig-Nurnberg	0100	0101
Nurnberg - Munchen	0100	0102
Munchen-Kufstein (depending on completion Brenner tunnel)	0100	0103
Brussels-Liège-Cologne	0200	0202
Liège-Aachen (P5)	0200	0202
Aachen-Köln	0200	0202
Köln-Frankfurt am Main *NP	0200	0254
Saarbrücken-Mannheim	0400	0403
Beaudrecourt-Strasbourg-Stuttgart (incl. Kehl bridge)	1700	1701
Strasbourg - Appenweiler (Kehl bridge)	1700	1701
Kehl bridge (Works)	1700	1701
Kehl - Appenweiler (einschl. Bf. Kehl)	1700	1701
Stuttgart-Ilm	1700	1702

Below the table, the 'General Information' tab is active, showing the following fields:

- Total section cost (EUR): 515.000.000
- Measure type: Upgrade
- Length of section (km):
 - Completed: 0
 - Works ongoing: 0
 - Works to start before 2010: 0
 - Works to start between 2010 and 2013: 0
 - Works to start after 2013: 0
- Transport Mode(s): Railways

4.2.3. 'Implementation Period and Maturity' tab

The following screenshot shows form B with the 'Implementation Period and Maturity' tab active and five fields to complete:



4.2.4. *'Investments' tab*

This 'Investments' tab contains the investments for the section / subsection broken down by sources of financing. The following screenshot shows form B with the 'Investments' tab active:

Tentec Implementation Report - version 1_0

EUROPEAN COMMISSION
TRANS-EUROPEAN TRANSPORT NETWORK

B.
TEN-T PRIORITY PROJECTS INVESTMENT

Section name	PP	SECT
Halle/Leipzig-Nurnberg	0100	0101
Nurnberg - Munchen	0100	0102
Munchen-Kufstein (depending on completion Brenner tunnel)	0100	0103
Brussels-Liège-Cologne	0200	0202
Liège-Aachen (P5)	0200	0202
Aachen-Köln	0200	0202
Köln-Frankfurt am Main *NP	0200	0254
Saarbrücken-Mannheim	0400	0403
Beaudrecourt-Strasbourg-Stuttgart (incl. Kehl bridge)	1700	1701
Strasbourg - Appenweier (Kehl bridge)	1700	1701
Kehl bridge (Works)	1700	1701
Kehl - Appenweier (einschl. Bf. Kehl)	1700	1701
Stuttgart-Ilm	1700	1702

General Information | Implementation period and Maturity | **Investments**

	Until end 2006	2007	2008 (estimated)	2009 (forese...)	2010-2013	2014-2020
State budget(s)	201 270 000 €	0 €	0 €	0 €	0 €	142 800 000 €
Regional/local budget(s)	0 €	0 €	0 €	0 €	0 €	0 €
TEN financing	20 330 000 €	0 €	0 €	0 €	0 €	0 €
Cohesion Funds	0 €	0 €	0 €	0 €	0 €	0 €
EIB loan	0 €	0 €	0 €	0 €	0 €	0 €
Other loans	0 €	0 €	0 €	0 €	0 €	0 €
Structural funds (ERDF) (Approved)	0 €	0 €	0 €	0 €	0 €	0 €
EBRD	0 €	0 €	0 €	0 €	0 €	0 €
Action promoter (Public or Private)	0 €	0 €	0 €	0 €	0 €	0 €
Other sources	0 €	0 €	0 €	0 €	0 €	0 €

FORM A1 | FORM A2 | FORM A3 | FORM A4 | FORM A5 | **FORM B***

2 : Validation Messages

Ready ● VALID

The table in the 'Investments' tab is completed in a similar manner to that described in section 4.1.2.

Note that all the amounts must be in EUR.