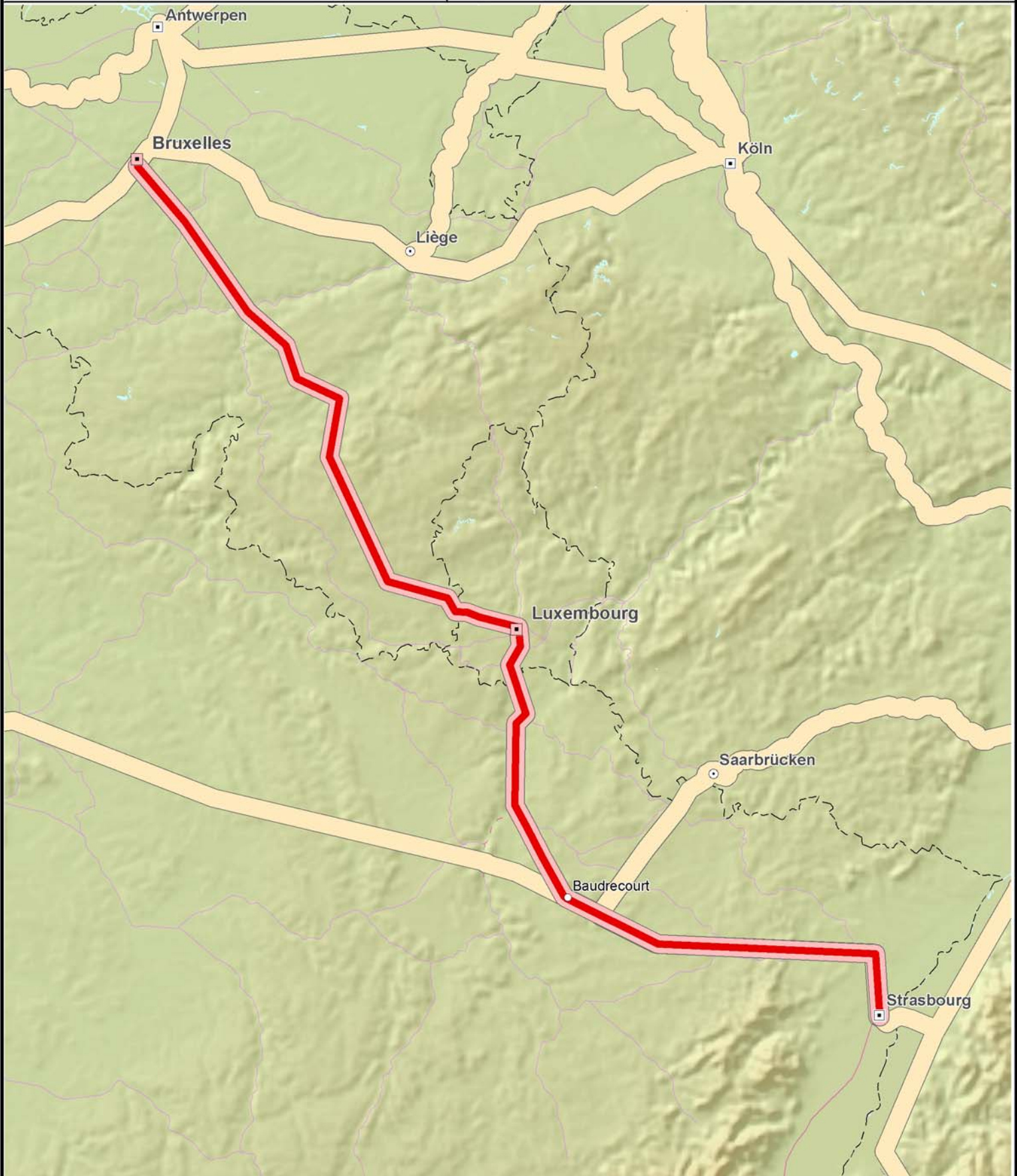




PROJECT N° 28

Trans-European transport network  
Priority projects

# "EUROCAPRAIL" ON THE BRUSSELS- LUXEMBOURG-STRASBOURG RAILWAY AXIS



- - - Planned Conventional
- - - Planned HighSpeed
- - - Planned UpgradedHighSpeed
- - - Existing Conventional
- - - Existing HighSpeed
- - - Existing UpgradedHighSpeed
- Priority axis n° 28
- Priority sections
- Other priority axes