



EUROPEAN COMMISSION
Employment, Social Affairs and Inclusion DG
Analysis, Evaluation, External Relations
Employment Analysis

**Posting of workers in the European Union
and EFTA countries : Report on A1 portable documents
issued in 2010 and 2011**

This note has been prepared in the frame of the work of the Administrative Commission for the coordination of social security systems and presented at its October 2012 meeting.

Administrative data collection on A1 portable documents issued in 2010 and 2011

- Presentation of main results -

1. Introduction and main findings	3
2. Overall picture of 2010 and 2011 data on posted workers	5
2.1. PD A1 issued by sending country.....	5
2.2. PD A1 by destination country	11
2.3. Country by country distribution of postings.....	17
3. Comparison with 2009 data	20
4. Breakdown by sector of economic activity.....	23
5. Strengths and weaknesses of the A1 data	25
Annex 1: Detailed country-by-country data tables on PD A1	26
Annex 2: data collection questionnaire 2010 and 2011	32

1. INTRODUCTION AND MAIN FINDINGS

This note presents data on the number of portable documents A1 ("PD A1"), previously E101 certificates¹, issued in EU Member States (and Iceland, Norway and Liechtenstein) during 2010 and 2011. PD A1 is issued when a worker or a self-employed person is posted in another EEA country. PD A1 is further used when a person is normally employed in more than one EEA country at the same time or in alternation. PD A1 certifies which social security legislation applies to the holder. Under the EU rules on coordination of social security systems a person is only subject to the social security legislation of one country at any time.

In the course of the latest data collection exercise during summer 2012, DG Employment has requested and received data from all 27 EU Member States as well as Iceland, Liechtenstein and Norway². The data show the number of PD A1 issued in these countries under Council Regulation (EC) No 883/2004 on the coordination of social security systems.

Almost all countries provided figures on PD A1 issued for postings to specific Member States as well as cases linked to international transport, activities in 2 or more countries or other cases under the Regulation. Out of the 30 countries replying to the questionnaire for 2011, 14 also provided a breakdown of data by sector of economic activity for posting cases.

The data originate from administrative sources from countries' ministries for labour or social affairs or social security or social insurance authorities.

The main findings emerging from the 2010-11 data collection are the following:

- In 2011, a total of 1.51 million PD A1 were recorded across the EU-27 and Iceland, Liechtenstein and Norway. Of these, around 1.21 million related to postings to specific countries. The remainder of almost 300,000 cases fell into the categories international transport, persons active in 2 or more Member States or other cases. This represents a strong increase compared to 2010 (1.33 million, among which 1.06 million related to postings to specific countries) and 2009 (respectively 1.27 million and 1 million).
- In 2011, around 60% of all postings (compared to 63% in 2010) originated in the EU-15 Member States³ and almost 40% (compared to 37% in 2010) in the EU-12 Member States⁴. Postings originating in EEA-EFTA⁵ countries accounted for only 0.2% of all postings.
- In 2011, the main sending countries of posted workers were Poland, Germany and France followed by Romania, Hungary, Belgium and Portugal. The main receiving countries

¹ From 1 May 2010, E101 forms have been replaced by A1 forms due to Council Regulation (EC) No 883/2004 on the coordination of social security systems and appropriate Decisions of the Administrative Commission for the Coordination of Social Security Systems. E101 forms continued however to be used to some extent in 2010 and 2011. In replying to the questionnaire, countries were asked to sum up the E101 and A1 forms for each of the year (2010 and 2011). Throughout this report the term A1 forms therefore refers to both A1 and E101 forms.

² Sweden provided data on certificates issued for posting to other countries only for the year 2011 (but not for 2010) and Switzerland did not provide any data for neither 2010 nor 2011. However, for both years, these two countries are included in this report as destination countries of workers posted from other countries.

³ The Member States forming part of the EU before 1 May 2004.

⁴ The Member States that joined the EU in 2004 and 2007.

⁵ Throughout this report the aggregate 'EEA-EFTA' refers to Iceland, Norway and Liechtenstein while the aggregate 'EFTA' refers to Iceland, Norway and Liechtenstein plus Switzerland.

were Germany and France followed by the Netherlands, Belgium, Spain, Italy and Austria.

- The data shows a pattern of distribution of posted workers between sending and receiving countries which largely seems to follow geographical proximity.
- Compared to 2009, the data indicate an increase in the number of postings, which occurred mainly between 2010 and 2011. The number of posted workers sent abroad has increased the most in relative terms (more than 70% increase) from Slovenia, Romania, Latvia, Estonia, Lithuania and Bulgaria. In absolute terms, the number of posted workers sent abroad has also increased strongly from Germany, Poland, Hungary and Slovakia.
- Moreover, the number of posted workers received from abroad has increased sharply (over 2009-11) in Austria, Norway and Germany (more than 40% increase) and in absolute terms also in Belgium, the Netherlands, Italy and Switzerland. On the contrary the number of workers posted to Spain and Greece has decreased, most probably in relation with the decline of labour demand subsequent to the crisis in those two countries.
- Concerning sectoral breakdown, the comparability and usefulness of the data is limited by the fact that for 2011, 16 countries did not provide figures by economic activity, including two countries with large number of postings (DE, FR). The data from the 14 countries which did provide a sectoral breakdown for 2011 suggest that on average around 71% of PD A1 issued were for industry, including 43% into the construction sector. The share of the PD A1 issued for activities in the service sector is around 27% (compared to 44% in 2009, but among a different group of countries). Agriculture and fishing make for around 2.5% of all PD A1.
- The A1 data collection fills an important information gap concerning the posting of workers. Despite some limitations (no information on duration of postings, limited data on sectors,...⁶) it is still the only source, to our knowledge, which allows for a comparable overview of the number of postings across EU-Member States.

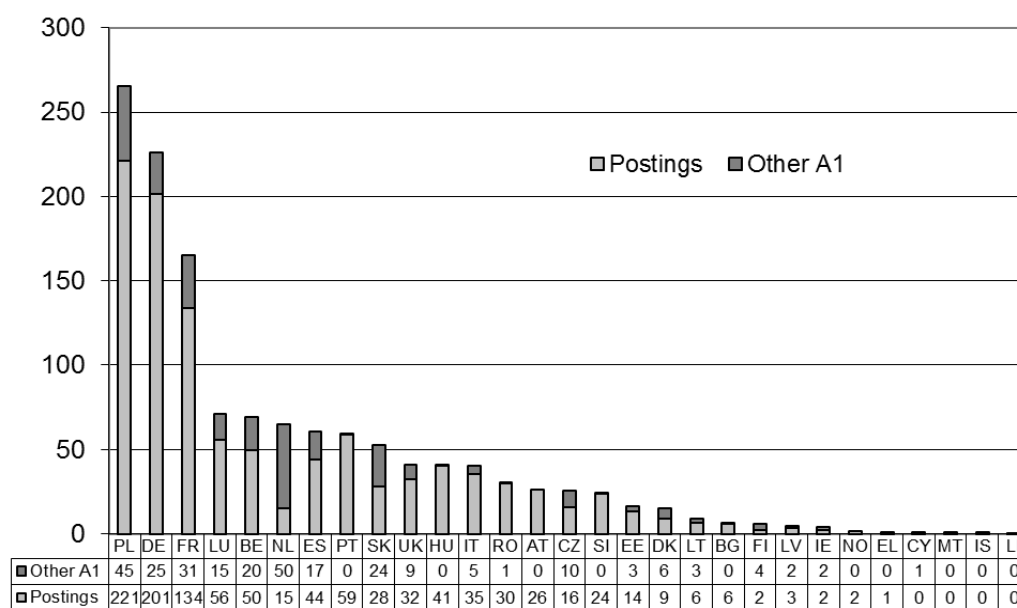
⁶ For an overview of the limitation, see note AC 019/11 from January 2011

2. OVERALL PICTURE OF 2010 AND 2011 DATA ON POSTED WORKERS

2.1. PD A1 issued by sending country

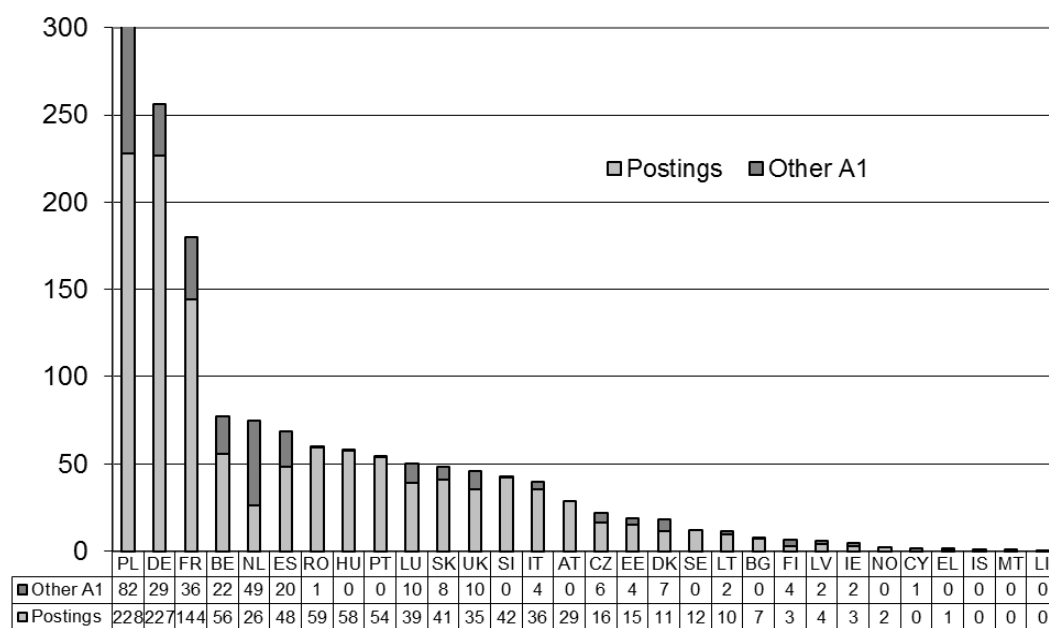
- **Figures 1a and 1b and tables 1a and 1b** below show the number of PD A1 issued in each of the 30 reporting countries in 2011 (29 in 2010). By showing postings to specific countries and PD A1 issued for persons active in international transport, active in 2 or more Member States or other categories, these figures give the view from the side of the sending countries.
- In 2011, a total of 1.51 million PD A1 were recorded across the EU-27 and Iceland, Liechtenstein and Norway. Of these, around 1.21 million related to postings to specific countries. The remainder of almost 300,000 cases fell into the categories international transport, persons active in 2 or more Member States or other cases. The overall figures were lower in 2010, respectively 1.33 million PD A1 issued, out of which 1.06 million relate to postings and 0.27 million to other cases.
- In 2011, the main sending countries were Poland with 228,000 PD A1 issued for posting, followed by Germany (227,000) and France (144,000). Four other countries (BE, RO, HU and PT) recorded a number higher than 50,000 and six others (ES, SI, SK, LU, IT, UK) issued between 30,000 and 50,000 PD A1 for postings. Numbers in most other countries were substantially lower.
- In 2011, around 60% of all postings (compared to 63% in 2010) originated in the EU-15 Member States and almost 40% (compared to 37% in 2010) in the EU-12 Member States. Postings originating in EEA-EFTA countries accounted for only 0.2% of all postings.
- Among the PD A1 issued in the EU-15 in 2011, around 64% were valid for other EU-15 countries, 6% for EU-12 countries, 9% for EFTA countries and 21% international transport, persons active in 2 or more Member States or other cases (**Table 2b**). Around 76% of PD A1 issued in the EU-12 were valid for EU-15 countries, 4% for other EU-12 countries, 2% for EFTA countries and 18% for international transport, persons active in 2 or more Member States or other cases.
- As for the EEA-EFTA countries, around 80% of PD A1 issued were for postings towards the EU-15, 7% towards EU-12 countries and 8% towards EFTA countries. The 6% remaining were issued for international transport, persons active in 2 or more Member States or other cases.
- For more detailed country breakdowns see **Tables 9 and 10** in the Annex.

Figure 1a: Number of PD A1 issued by sending country, 2010 (in 1,000)



Source: Administrative data from EU Member States, IS, LI and NO on PD A1 issued according to Council Regulation (EC) No 883/2004 on the coordination of social security system.
 Note: no data for Sweden for 2010.

Figure 1b: Number of PD A1 issued by sending country, 2011 (in 1,000)



Source: Administrative data from EU Member States, IS, LI and NO on PD A1 issued according to Council Regulation (EC) No 883/2004 on the coordination of social security system.

Table 1a: PD A1 issued by sending country, 2010 (number of cases)

Reporting country	Posting according to Art. 12 of Regulation (EC) No 883/2004 to destination in...			Total postings	Other A1				Total other A1	Total posting and other A1
	EU-15	EU-12	EFTA		International transport according to Art. 13	Active in 2 or more Member States according to Art. 13	Other - e.g. Art. 16 agreements	Mutiple destinations		
BE	47,817	1,117	928	49,862	0	18,208	1,436		19,644	69,506
BG	5,097	527	110	5,734					328	6,062
CZ	12,520	2,819	490	15,829	5,590	4,099	285		9,974	25,803
DK	4,104	361	4,797	9,262	880	5,027			5,907	15,169
DE	158,340	19,201	23,895	201,436	7	16,799	8,117		24,923	226,359
EE	12,919	114	547	13,580	300	2,297	327		2,924	16,504
IE	1,782	73	80	1,935	1,524	556	339		2,419	4,354
EL	398	234	10	642	4	0	0		4	646
ES	40,556	2,612	919	44,087		13,718	2,995		16,713	60,800
FR	112,650	12,571	8,675	133,896	117	897	1,637	28,822	31,473	165,369
IT	18,997	1,613	14,820	35,430	0	1,619	2,691	582	4,892	40,322
CY	81	0	0	81	0	515	0		515	596
LV	2,949	217	258	3,424	5	273	1,232		1,510	4,934
LT	4,450	588	1,424	6,462	91	2,061	493		2,645	9,107
LU	54,768	308	776	55,852	10,174	4,987	95		15,256	71,108
HU	37,725	2,494	421	40,640	28	4	146		178	40,818
MT	431	8	3	442	1	3	4		8	450
NL	14,541	326	323	15,190	2,655	44,822	2,165		49,642	64,832
AT	19,095	4,247	2,615	25,957	0	0	0		0	25,957
PL	202,402	12,117	6,607	221,126	0	44,018	509		44,527	265,653
PT	58,184	227	512	58,923	1	24	0		25	58,948
RO	28,548	958	224	29,730	0	0	532		532	30,262
SI	22,325	636	983	23,944	0	429	59		488	24,432
SK	21,547	6,131	567	28,245	5,208	1,311	17,774		24,293	52,538
FI	1,711	250	226	2,187	0	1,881	1,663		3,544	5,731
UK	29,367	1,321	1,421	32,109	780	4,559	3,661		9,000	41,109
IS	245	7	124	376	0	34	11		45	421
LI	51	0	10	61	0	138	22		160	221
NO	1,683	106	83	1,872	0	0	0		0	1,872
Total	915,283	71,183	71,848	1,058,314	27,365	168,279	46,193	29,404	271,569	1,329,883
EU-14	562,310	44,461	59,997	666,768	16,142	113,097	24,799	29,404	183,442	850,210
EU-12	350,994	26,609	11,634	389,237	11,223	55,010	21,361	0	87,922	477,159
EEA-EFTA	1,979	113	217	2,309	0	172	33	0	205	2,514

Source: Administrative data from EU Member States, IS, LI and NO on PD A1 issued according to Council Regulation (EC) No 883/2004 on the coordination of social security system.

Note: no data for Sweden for 2010. 'EU-14' refers to EU-15 countries minus Sweden.

Table 1b: PD A1 issued by sending country, 2011 (number of cases)

Reporting country	Posting according to Art. 12 of Regulation (EC) No 883/2004 to destination in...			Total postings	Other A1				Total other A1	Total posting and other A1
	EU-15	EU-12	EFTA		International transport according to Art. 13	Active in 2 or more Member States according to Art. 13	Other e.g. Art. 16 agreements	Mutiple destinations		
BE	53,084	1,711	1,136	55,931	0	19,857	1,687		21,544	77,475
BG	6,594	313	522	7,429					383	7,812
CZ	13,735	2,367	0	16,102	960	4,770	190		5,920	22,022
DK	5,090	484	5,917	11,491	1,300	5,336			6,636	18,127
DE	170,318	24,993	31,539	226,850	3	21,631	7,471		29,105	255,955
EE	14,299	174	849	15,322	289	3,159	189		3,637	18,959
IE	2,425	391	290	3,106	632	1,036	209		1,877	4,983
EL	487	391	10	888	4	7	0		11	899
ES	43,737	3,431	1,311	48,479		17,776	2,609		20,385	68,864
FR	123,412	11,512	9,332	144,256	911	5,540	1,575	27,654	35,680	179,936
IT	17,034	1,893	16,684	35,611	0	1,813	2,255	82	4,150	39,761
CY	32	6	0	38	0	1,497	0		1,497	1,535
LV	3,526	221	540	4,287	123	523	1,224		1,870	6,157
LT	6,601	273	2,641	9,515	14	1,457	469		1,940	11,455
LU	38,375	494	516	39,385	6,209	4,206	81		10,496	49,881
HU	55,102	1,966	780	57,848	108	66	60		234	58,082
MT	234	5	79	318	2	2	6		10	328
NL	25,006	529	451	25,986	1,247	44,788	2,950		48,985	74,971
AT	22,935	2,925	2,946	28,806	0	0	0		0	28,806
PL	216,902	6,364	4,664	227,930	0	81,770	0		81,770	309,700
PT	53,350	208	485	54,043	4	31	105		140	54,183
RO	57,845	1,132	386	59,363	0	0	710		710	60,073
SI	40,294	1,396	795	42,485	0	66	17		83	42,568
SK	30,584	9,788	554	40,926	6,009	561	972		7,542	48,468
FI	2,066	256	346	2,668	0	1,911	1,815		3,726	6,394
SE	3,747	415	7,609	11,771	0	0	0		0	11,771
UK	29,818	1,720	3,830	35,368	1,034	6,054	3,331		10,419	45,787
IS	213	17	147	377	0	15	5		20	397
LI	58	0	5	63	0	125	14		139	202
NO	1,933	171	59	2,163	0	0	0		0	2,163
Total	1,038,836	75,546	94,423	1,208,805	18,849	223,997	27,944	27,736	298,909	1,507,714
EU-15	590,884	51,353	82,402	724,639	11,344	129,986	24,088	27,736	193,154	917,793
EU-12	445,748	24,005	11,810	481,563	7,505	93,871	3,837	0	105,596	587,159
EEA-EFTA	2,204	188	211	2,603	0	140	19	0	159	2,762

Source: Administrative data from EU Member States, IS, LI and NO on PD A1 issued according to Council Regulation (EC) No 883/2004 on the coordination of social security system.

Table 2a: PD A1 issued by sending country, 2010 (% of total A1 per country)

Reporting country	Posting according to Art. 12 of Regulation (EC) No 883/2004 to destination in...			Total postings	Other A1				Total other A1	Total posting and other A1
	EU-15	EU-12	EFTA		International transport according to Art. 13	Active in 2 or more Member States according to Art. 13	Other - e.g. Art. 16 agreement	Mutiple destinations		
BE	68.8	1.6	1.3	71.7	0.0	26.2	2.1	0.0	28.3	100
BG	84.1	8.7	1.8	94.6	0.0	0.0	0.0	0.0	5.4	100
CZ	48.5	10.9	1.9	61.3	21.7	15.9	1.1	0.0	38.7	100
DK	27.1	2.4	31.6	61.1	5.8	33.1	0.0	0.0	38.9	100
DE	70.0	8.5	10.6	89.0	0.0	7.4	3.6	0.0	11.0	100
EE	78.3	0.7	3.3	82.3	1.8	13.9	2.0	0.0	17.7	100
IE	40.9	1.7	1.8	44.4	35.0	12.8	7.8	0.0	55.6	100
EL	61.6	36.2	1.5	99.4	0.6	0.0	0.0	0.0	0.6	100
ES	66.7	4.3	1.5	72.5	0.0	22.6	4.9	0.0	27.5	100
FR	68.1	7.6	5.2	81.0	0.1	0.5	1.0	17.4	19.0	100
IT	47.1	4.0	36.8	87.9	0.0	4.0	6.7	1.4	12.1	100
CY	13.6	0.0	0.0	13.6	0.0	86.4	0.0	0.0	86.4	100
LV	59.8	4.4	5.2	69.4	0.1	5.5	25.0	0.0	30.6	100
LT	48.9	6.5	15.6	71.0	1.0	22.6	5.4	0.0	29.0	100
LU	77.0	0.4	1.1	78.5	14.3	7.0	0.1	0.0	21.5	100
HU	92.4	6.1	1.0	99.6	0.1	0.0	0.4	0.0	0.4	100
MT	95.8	1.8	0.7	98.2	0.2	0.7	0.9	0.0	1.8	100
NL	22.4	0.5	0.5	23.4	4.1	69.1	3.3	0.0	76.6	100
AT	73.6	16.4	10.1	100.0	0.0	0.0	0.0	0.0	0.0	100
PL	76.2	4.6	2.5	83.2	0.0	16.6	0.2	0.0	16.8	100
PT	98.7	0.4	0.9	100.0	0.0	0.0	0.0	0.0	0.0	100
RO	94.3	3.2	0.7	98.2	0.0	0.0	1.8	0.0	1.8	100
SI	91.4	2.6	4.0	98.0	0.0	1.8	0.2	0.0	2.0	100
SK	41.0	11.7	1.1	53.8	9.9	2.5	33.8	0.0	46.2	100
FI	29.9	4.4	3.9	38.2	0.0	32.8	29.0	0.0	61.8	100
UK	71.4	3.2	3.5	78.1	1.9	11.1	8.9	0.0	21.9	100
IS	58.2	1.7	29.5	89.3	0.0	8.1	2.6	0.0	10.7	100
LI	23.1	0.0	4.5	27.6	0.0	62.4	10.0	0.0	72.4	100
NO	89.9	5.7	4.4	100.0	0.0	0.0	0.0	0.0	0.0	100
Total	68.8	5.4	5.4	79.6	2.1	12.7	3.5	2.2	20.4	100
EU-14	66.1	5.2	7.1	78.4	1.9	13.3	2.9	3.5	21.6	100
EU-12	73.6	5.6	2.4	81.6	2.4	11.5	4.5	0.0	18.4	100
EEA-EFTA	78.7	4.5	8.6	91.8	0.0	6.8	1.3	0.0	8.2	100

Source: Administrative data from EU Member States, IS, LI and NO on PD A1 issued according to Council Regulation (EC) No 883/2004 on the coordination of social security system.

Note: no data for Sweden for 2010. 'EU-14' refers to EU-15 countries minus Sweden.

Table 2b: PD A1 issued by sending country, 2011 (% of total A1 per country)

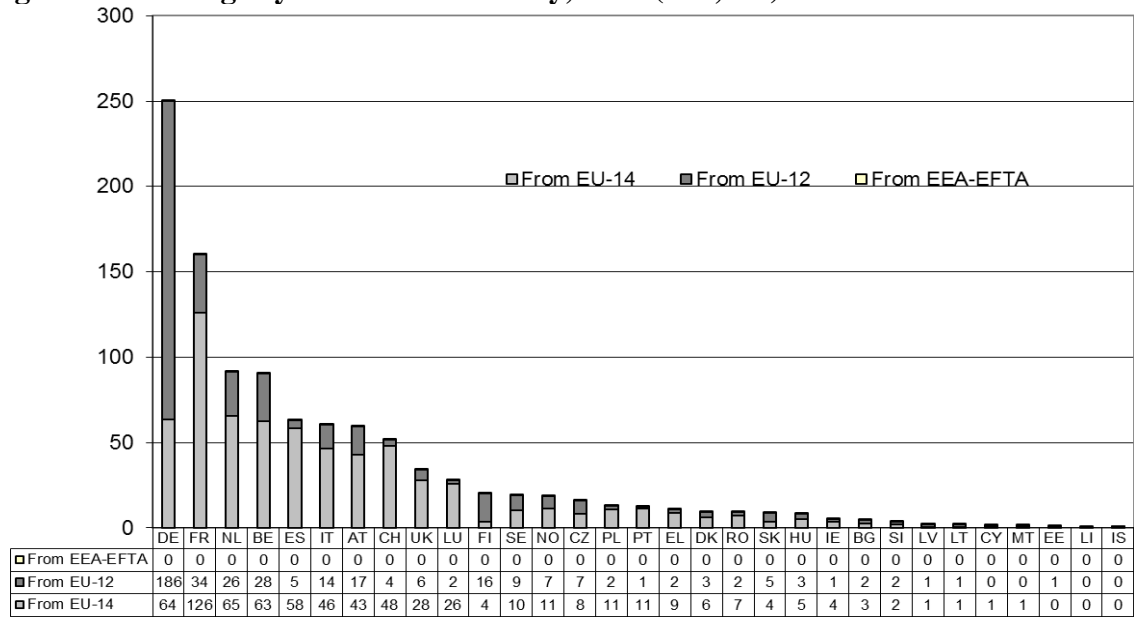
Reporting country	Posting according to Art. 12 of Regulation (EC) No 883/2004 to destination in...			Total postings	Other A1				Total other A1	Total posting and other A1
	EU-15	EU-12	EFTA		International transport according to Art. 13	Active in 2 or more Member States according to Art. 13	Other - e.g. Art. 16 agreements	Multiple destinations		
BE	68.5	2.2	1.5	72.2	0.0	25.6	2.2	0.0	27.8	100
BG	84.4	4.0	6.7	95.1	0.0	0.0	0.0	0.0	4.9	100
CZ	62.4	10.7	0.0	73.1	4.4	21.7	0.9	0.0	26.9	100
DK	28.1	2.7	32.6	63.4	7.2	29.4	0.0	0.0	36.6	100
DE	66.5	9.8	12.3	88.6	0.0	8.5	2.9	0.0	11.4	100
EE	75.4	0.9	4.5	80.8	1.5	16.7	1.0	0.0	19.2	100
IE	48.7	7.8	5.8	62.3	12.7	20.8	4.2	0.0	37.7	100
EL	54.2	43.5	1.1	98.8	0.4	0.8	0.0	0.0	1.2	100
ES	63.5	5.0	1.9	70.4	0.0	25.8	3.8	0.0	29.6	100
FR	68.6	6.4	5.2	80.2	0.5	3.1	0.9	15.4	19.8	100
IT	42.8	4.8	42.0	89.6	0.0	4.6	5.7	0.2	10.4	100
CY	2.1	0.4	0.0	2.5	0.0	97.5	0.0	0.0	97.5	100
LV	57.3	3.6	8.8	69.6	2.0	8.5	19.9	0.0	30.4	100
LT	57.6	2.4	23.1	83.1	0.1	12.7	4.1	0.0	16.9	100
LU	76.9	1.0	1.0	79.0	12.4	8.4	0.2	0.0	21.0	100
HU	94.9	3.4	1.3	99.6	0.2	0.1	0.1	0.0	0.4	100
MT	71.3	1.5	24.1	97.0	0.6	0.6	1.8	0.0	3.0	100
NL	33.4	0.7	0.6	34.7	1.7	59.7	3.9	0.0	65.3	100
AT	79.6	10.2	10.2	100.0	0.0	0.0	0.0	0.0	0.0	100
PL	70.0	2.1	1.5	73.6	0.0	26.4	0.0	0.0	26.4	100
PT	98.5	0.4	0.9	99.7	0.0	0.1	0.2	0.0	0.3	100
RO	96.3	1.9	0.6	98.8	0.0	0.0	1.2	0.0	1.2	100
SI	94.7	3.3	1.9	99.8	0.0	0.2	0.0	0.0	0.2	100
SK	63.1	20.2	1.1	84.4	12.4	1.2	2.0	0.0	15.6	100
FI	32.3	4.0	5.4	41.7	0.0	29.9	28.4	0.0	58.3	100
SE	31.8	3.5	64.6	100.0	0.0	0.0	0.0	0.0	0.0	100
UK	65.1	3.8	8.4	77.2	2.3	13.2	7.3	0.0	22.8	100
IS	53.7	4.3	37.0	95.0	0.0	3.8	1.3	0.0	5.0	100
LI	28.7	0.0	2.5	31.2	0.0	61.9	6.9	0.0	68.8	100
NO	89.4	7.9	2.7	100.0	0.0	0.0	0.0	0.0	0.0	100
Total	68.9	5.0	6.3	80.2	1.3	14.9	1.9	1.8	19.8	100
EU-15	64.4	5.6	9.0	79.0	1.2	14.2	2.6	3.0	21.0	100
EU-12	75.9	4.1	2.0	82.0	1.3	16.0	0.7	0.0	18.0	100
EEA-EFTA	79.8	6.8	7.6	94.2	0.0	5.1	0.7	0.0	5.8	100

Source: Administrative data from EU Member States, IS, LI and NO on PD A1 issued according to Council Regulation (EC) No 883/2004 on the coordination of social security system.

2.2. PD A1 by destination country

- ⇒ Under the A1 data collection exercise, countries were asked to provide data on how many PD A1 were issued by their authorities for postings and other activities abroad, but not for data on workers posted to their territory from other countries. However, given that countries reported on the destination countries of those persons for whom they issued PD A1 for postings one can calculate the number of posted workers to a specific destination country by summing up the corresponding numbers by sending country.
- ⇒ By this count, the number of posted workers received in 2011 was highest in Germany (311,000), followed by France (162,000), Belgium (125,000) and the Netherlands (106,000) (see **Figure 2b and table 3b**). Other countries having received a substantial number (30,000-80,000) of posted workers in 2011 were Austria, Italy, Switzerland, Spain, UK and Norway.
- ⇒ Overall, 69% of all PD A1 were issued in 2011 for posting in EU-15 countries, 5% in EU-12 countries, 6% in EFTA while around 20% concern PD A1 other than posting (international transport, persons active in 2 or more Member States or other cases). For this other type of PD A1, a breakdown by individual destination countries is not possible.
- ⇒ In the following countries, more than half of the posted workers come from EU-12 countries: Finland (79%), Germany (77%) and Sweden (51%). On the other side, posted workers coming from EU-15 countries represent the overwhelming majority (>90%) of posted workers in LI, LU, CH, PT and IE.

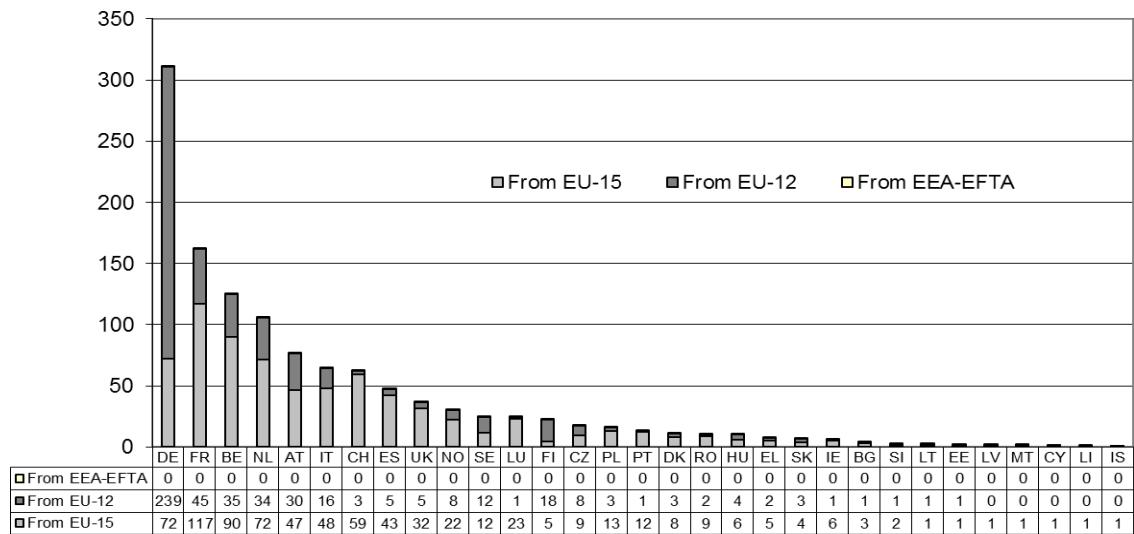
Figure 2a: Postings by destination country, 2010 (in 1,000)



Source: Administrative data from EU Member States, IS, LI and NO on PD A1 issued according to Council Regulation (EC) No 883/2004 on the coordination of social security system.

Note: Figures do not include postings from SE as this country did not provide data for 2010. 'EU-14' refers to EU-15 countries minus Sweden.

Figure 2b: Postings by destination country, 2011 (in 1,000)



Source: Administrative data from EU Member States, IS, LI and NO on PD A1 issued according to Council Regulation (EC) No 883/2004 on the coordination of social security system.

Table 3a: PD A1 by destination country, 2010 (number of cases)

Destination country	Posting according to Art. 12 of Regulation (EC) No 883/20041 from...			Total
	EU-14	EU-12	EEA-EFTA	
BE	62,600	27,836	104	90,540
BG	2,609	1,868	6	4,483
CZ	8,453	7,434	5	15,892
DK	6,137	3,249	222	9,608
DE	63,651	186,209	194	250,054
EE	455	779	1	1,235
IE	3,691	1,318	5	5,014
EL	8,749	1,873	34	10,656
ES	58,404	4,719	181	63,304
FR	126,228	34,147	157	160,532
IT	46,408	13,944	108	60,460
CY	1,272	422	8	1,702
LV	744	1,105	2	1,851
LT	649	1,190	11	1,850
LU	25,659	2,063	8	27,730
HU	5,388	3,055	14	8,457
MT	963	340	5	1,308
NL	65,388	25,964	208	91,560
AT	42,707	16,890	45	59,642
PL	11,075	1,767	35	12,877
PT	11,166	998	29	12,193
RO	7,307	2,116	22	9,445
SI	1,803	1,587	1	3,391
SK	3,743	4,946	3	8,692
FI	3,788	16,379	38	20,205
SE	10,103	9,178	183	19,464
UK	27,631	6,227	463	34,321
IS	384	136	23	543
LI	410	162	0	572
NO	11,204	7,448	119	18,771
CH	47,999	3,888	75	51,962
Total	666,768	389,237	2,309	1,058,314
EU-15	562,310	350,994	1,979	915,283
EU-12	44,461	26,609	113	71,183
EFTA	59,997	11,634	217	71,848

Source: Administrative data from EU Member States, IS, LI and NO on PD A1 issued according to Council Regulation (EC) No 883/2004 on the coordination of social security system.

Note: Figures do not include postings from SE as this country did not provide data for 2010. 'EU-14' refers to EU-15 countries minus Sweden.

Table 3b: PD A1 by destination country, 2011 (number of cases)

Destination country	Posting according to Art. 12 of Regulation (EC) No 883/2004 from...			Total
	EU-15	EU-12	EEA-EFTA	
BE	90,062	34,954	91	125,107
BG	3,295	708	3	4,006
CZ	9,333	7,808	3	17,144
DK	8,204	2,601	197	11,002
DE	72,307	238,852	202	311,361
EE	1,190	710	4	1,904
IE	5,518	560	6	6,084
EL	5,218	2,498	47	7,763
ES	42,557	4,842	241	47,640
FR	117,199	44,521	234	161,954
IT	47,967	16,135	121	64,223
CY	799	232	11	1,042
LV	1,314	465	9	1,788
LT	1,201	1,008	39	2,248
LU	22,962	1,328	5	24,295
HU	5,872	4,041	11	9,924
MT	1,179	265	5	1,449
NL	71,731	33,841	313	105,885
AT	46,722	29,574	39	76,335
PL	12,753	3,178	82	16,013
PT	12,335	996	14	13,345
RO	8,551	1,907	18	10,476
SI	1,993	682	1	2,676
SK	3,873	3,001	2	6,876
FI	4,584	17,502	97	22,183
SE	11,842	12,355	215	24,412
UK	31,676	5,189	382	37,247
IS	500	48	11	559
LI	744	19	0	763
NO	22,123	8,259	141	30,523
CH	59,035	3,484	59	62,578
Total	724,639	481,563	2,603	1,208,805
EU-15	590,884	445,748	2,204	1,038,836
EU-12	51,353	24,005	188	75,546
EFTA	82,402	11,810	211	94,423

Source: Administrative data from EU Member States, IS, LI and NO on PD A1 issued according to Council Regulation (EC) No 883/2004 on the coordination of social security system.

Table 4a: PD A1 by destination country, 2010 (row %)

Destination country	Posting according to Art. 12 of Regulation (EC) No 883/20041 from...			Total
	EU-14	EU-12	EEA-EFTA	
BE	69.1	30.7	0.1	100
BG	58.2	41.7	0.1	100
CZ	53.2	46.8	0.0	100
DK	63.9	33.8	2.3	100
DE	25.5	74.5	0.1	100
EE	36.8	63.1	0.1	100
IE	73.6	26.3	0.1	100
EL	82.1	17.6	0.3	100
ES	92.3	7.5	0.3	100
FR	78.6	21.3	0.1	100
IT	76.8	23.1	0.2	100
CY	74.7	24.8	0.5	100
LV	40.2	59.7	0.1	100
LT	35.1	64.3	0.6	100
LU	92.5	7.4	0.0	100
HU	63.7	36.1	0.2	100
MT	73.6	26.0	0.4	100
NL	71.4	28.4	0.2	100
AT	71.6	28.3	0.1	100
PL	86.0	13.7	0.3	100
PT	91.6	8.2	0.2	100
RO	77.4	22.4	0.2	100
SI	53.2	46.8	0.0	100
SK	43.1	56.9	0.0	100
FI	18.7	81.1	0.2	100
SE	51.9	47.2	0.9	100
UK	80.5	18.1	1.3	100
IS	70.7	25.0	4.2	100
LI	71.7	28.3	0.0	100
NO	59.7	39.7	0.6	100
CH	92.4	7.5	0.1	100
Total	63.0	36.8	0.2	100
EU-15	61.4	38.3	0.2	100
EU-12	62.5	37.4	0.2	100
EFTA	83.5	16.2	0.3	100

Source: Administrative data from EU Member States, IS, LI and NO on PD A1 issued according to Council Regulation (EC) No 883/2004 on the coordination of social security system.

Note: Figures do not include postings from SE as this country did not provide data for 2010. 'EU-14' refers to EU-15 countries minus Sweden.

Table 4b: PD A1 by destination country, 2011 (row %)

Destination country	Posting according to Art. 12 of Regulation (EC) No 883/20041 from...			Total
	EU-15	EU-12	EEA-EFTA	
BE	72.0	27.9	0.1	100
BG	82.3	17.7	0.1	100
CZ	54.4	45.5	0.0	100
DK	74.6	23.6	1.8	100
DE	23.2	76.7	0.1	100
EE	62.5	37.3	0.2	100
IE	90.7	9.2	0.1	100
EL	67.2	32.2	0.6	100
ES	89.3	10.2	0.5	100
FR	72.4	27.5	0.1	100
IT	74.7	25.1	0.2	100
CY	76.7	22.3	1.1	100
LV	73.5	26.0	0.5	100
LT	53.4	44.8	1.7	100
LU	94.5	5.5	0.0	100
HU	59.2	40.7	0.1	100
MT	81.4	18.3	0.3	100
NL	67.7	32.0	0.3	100
AT	61.2	38.7	0.1	100
PL	79.6	19.8	0.5	100
PT	92.4	7.5	0.1	100
RO	81.6	18.2	0.2	100
SI	74.5	25.5	0.0	100
SK	56.3	43.6	0.0	100
FI	20.7	78.9	0.4	100
SE	48.5	50.6	0.9	100
UK	85.0	13.9	1.0	100
IS	89.4	8.6	2.0	100
LI	97.5	2.5	0.0	100
NO	72.5	27.1	0.5	100
CH	94.3	5.6	0.1	100
Total	59.9	39.8	0.2	100
EU-15	56.9	42.9	0.2	100
EU-12	68.0	31.8	0.2	100
EFTA	87.3	12.5	0.2	100

Source: Administrative data from EU Member States, IS, LI and NO on PD A1 issued according to Council Regulation (EC) No 883/2004 on the coordination of social security system.

2.3. Country by country distribution of postings

- ⇒ **Tables 9 and 10** of the annex show the detailed distribution of PD A1 between the sending and receiving countries.
- ⇒ The figures show a rather clear pattern in the distribution of posted workers, which is rather close to the situation for 2009 (described in the previous note 019/11 from January 2011). The country destination seems to follow geographical location and historical and business traditions, though some countries have one or two leading destinations, and some tend to spread the workers across several countries (see **Table 5** below for a simplified presentation based on the 2011 situation):
- Posted workers from **Belgium, France, Germany, Luxembourg** and **the Netherlands** spread into neighbouring countries: posted workers from Germany went mostly to Austria, the Netherlands, France and Belgium; from Belgium mainly to France and the Netherlands; from Luxembourg to France and Belgium; and from the Netherlands to Belgium and Germany (however the Netherlands continue to report an extraordinarily high number of PD A1 for persons active in 2 or more Member States which cannot be classified in any destination country).
 - Posted workers from **France** tended to go to Belgium, Germany, Italy, UK and Spain.
 - Posted workers from **Austria** went mainly to Germany and Italy; from **Italy** to France, Germany and Spain; and those from **Liechtenstein** mostly to Germany and Austria.
 - Posted workers from **Iceland** tended to go to Norway; posted workers from **Norway** to the UK, the Netherlands and Sweden.
 - Main destinations for posted workers coming from **Denmark** are Norway and Sweden and for those coming from **Finland**, it is Sweden and Spain.
 - Posted workers from the **UK** mainly tended to go to France but also to Germany, Italy and the Netherlands, while the ones from **Ireland** went mainly to UK, the Netherlands, Sweden and Germany.
 - The main destinations for posted workers from **Portugal** were France and Spain, while for those from Spain mainly went to France followed by Italy and Portugal. For posted workers from **Greece** the main destination country was Romania, Germany and Bulgaria.
 - **Cyprus** posted workers mainly to Greece and those from **Malta** mostly to the Netherlands and to a lesser extent to Greece.
 - For **Czech Republic, Hungary, Poland, Slovakia, Slovenia, Romania and Bulgaria**, the main recipient country was Germany. The secondary destinations of posted workers from these countries are France, Belgium, the Netherlands, Austria and Italy.
 - A main destination for posted workers from **Estonia** is Finland, while for those from **Latvia** it was Germany and Sweden. Finally, those coming from **Lithuania** mainly went to Norway, Germany and France.

Table 5: Geographic proximity - main destination countries of posted workers, 2011
(column% - only shares of 5% or higher)

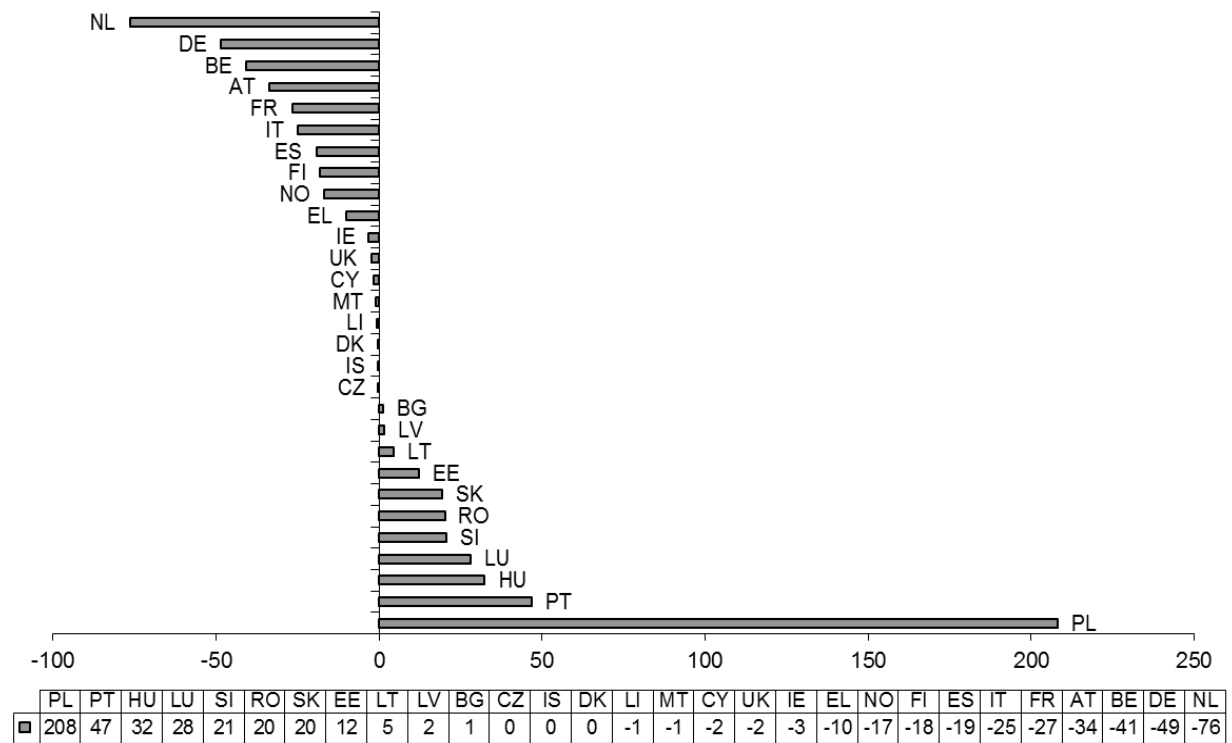
Destination country	Sending country																													
	LU	NL	BE	FR	DE	AT	IT	LI	IS	NO	SE	DK	FI	EE	LT	LV	UK	IE	ES	PT	EL	CY	MT	HU	PL	CZ	SK	SI	BG	RO
LU		11		6																										
NL			29	17	5	7			15						7		8	15		13			37	5	8	6	9	7	12	
BE	32	50		26	9		9					7		6	6		9		10					5	9	5	9		14	6
FR	45	9	38		10		27		13	9				17		44	6	35	34						11	10	9		7	13
DE	16	23	9	16		58	15	47	13	6		9	10		22	33	10	13	10	9	18		8	63	56	38	31	48	40	53
AT					20		7	45																						
IT				11	8	8										9		16		7	5	7		15		10	11	21		
LI																														
IS																														
NO									38		64	51	11	5	28	12	6	9												7
SE										10		12	19		8	16		14												
DK									11	7																				
FI																			82		7									
EE																						8								
LT																														
LV																														
UK				10						18		6	8					18	7				10							
IE																														
ES				11					13		11	5	15								24	5								
PT																				13										
EL								5																						
CY																							5							
MT																														
HU																								16						
PL																			11											
CZ																														
SK																														15
SI																														7
BG																														16
RO																														22

Source: Administrative data from EU Member States, IS, LI and NO on PD A1 issued according to Council Regulation (EC) No 883/2004 on the coordination of social security system.

Note: CH is not included in the table as it did not provide any data on PD A1 issued for posting abroad.

- ⇒ **Figures 3a and 3b** gives an overview of the net balance of postings by country by showing the number of postings originating in a country (excluding PD A1 issued for international transport, activity in 2 or more states and other cases) minus the number of postings received from other countries.
- ⇒ By this account, the **Netherlands, Germany, Belgium and Austria** were, both in 2010 and 2011, the countries who received the highest number of posted workers in net terms. It should be noted that the Netherlands reported, both in 2010 and 2011, an extraordinarily high number of PD A1 for persons active in 2 or more Member States which cannot be classified in any destination country and taken into account for the net posting balance overview.
- ⇒ On the other hand, **Poland** was by far the main (net) sending country, followed by Portugal, Hungary and Luxembourg in 2010 and by Romania, Hungary, Portugal and Slovenia in 2011.

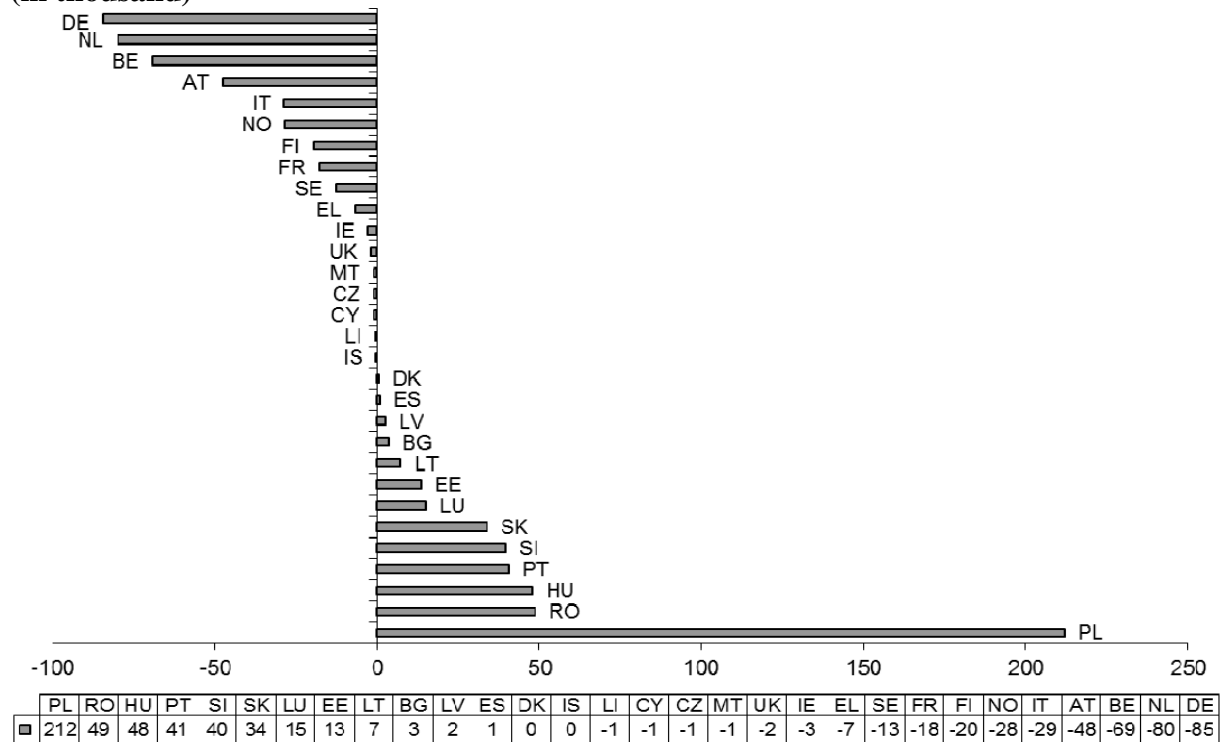
Figure 3a: Net balance between posted workers sent and posted workers received, 2010 (in thousand)



Source: Administrative data from EU Member States, IS, LI and NO on PD A1 issued according to Council Regulation (EC) No 883/2004 on the coordination of social security system.

Notes: Figures do not include postings from SE

Figure 3b: Net balance between posted workers sent and posted workers received, 2011 (in thousand)

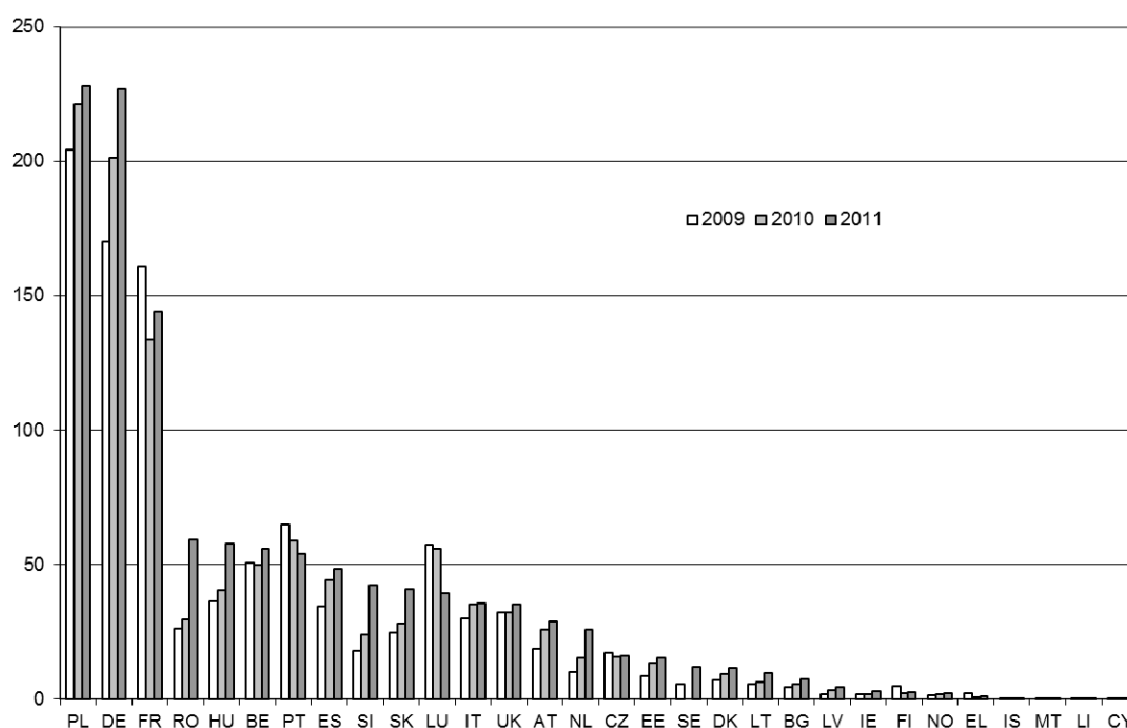


Source: Administrative data from EU Member States, IS, LI and NO on PD A1 issued according to Council Regulation (EC) No 883/2004 on the coordination of social security system.

3. COMPARISON WITH 2009 DATA

- ⇒ **Figure 4 and table 6** show a comparison of PD A1 issued in the reporting countries in the years 2009, 2010 and 2011.
- ⇒ Compared to 2009, the data indicate an increase in the number of postings, which occurred mainly between 2010 and 2011.
- ⇒ Over 2009-11, the number of posted workers sent abroad has increased the most in relative terms from Slovenia (+138%), Romania (+127%), Latvia (+117%), Estonia (+83%), Lithuania (+73%) and Bulgaria (+70%). In absolute terms, the number of posted workers sent abroad has also increased strongly from Germany (+57,000), Poland (+24,000) and Hungary (+21,000).
- ⇒ On the other side of the spectrum, decreases have been recorded (over 2009-11) in the case of workers posted by Luxembourg (-18,000), France (-17,000) and Portugal (-11,000). Moreover, the number of posted workers sent abroad has sharply decreased in Finland (-46%) and Greece (-61%) but the initial levels (2009) were quite low in absolute terms (respectively 5,000 and 2,000).

Figure 4: Postings by sending country, 2009 - 2011 (in thousand)



Source: Administrative data from EU Member States, IS, LI and NO on PD A1 issued according to Council Regulation (EC) No 883/2004 on the coordination of social security system.

Notes: Figures for postings originating in the UK relate for 2009 data to April 2009 to March 2010. Figures for Germany relate for 2009 data to 1 January 2009 to 30 November 2009. No data for Sweden for 2010

Table 6: PD A1 certificates by sending country, 2009 – 2011

Sending countries	Postings			Other A1			Total posting and other A1		
	2009	2010	2011	2009	2010	2011	2009	2010	2011
BE	50,774	49,862	55,931	20,826	19,644	21,544	71,600	69,506	77,475
BG	4,366	5,734	7,429	335	328	383	4,701	6,062	7,812
CZ	17,150	15,829	16,102	9,253	9,974	5,920	26,403	25,803	22,022
DK	7,063	9,262	11,491	8,868	5,907	6,636	15,931	15,169	18,127
DE	170,345	201,436	226,850	11,239	24,923	29,105	181,584	226,359	255,955
EE	8,384	13,580	15,322	1,620	2,924	3,637	10,004	16,504	18,959
IE	1,941	1,935	3,106	3,921	2,419	1,877	5,862	4,354	4,983
EL	2,265	642	888	60	4	11	2,325	646	899
ES	34,349	44,087	48,479	19,701	16,713	20,385	54,050	60,800	68,864
FR	160,774	133,896	144,256	61,147	31,473	35,680	221,921	165,369	179,936
IT	29,955	35,430	35,611	931	4,892	4,150	30,886	40,322	39,761
CY	29	81	38	3,954	515	1,497	3,983	596	1,535
LV	1,971	3,424	4,287	191	1,510	1,870	2,162	4,934	6,157
LT	5,486	6,462	9,515	1,890	2,645	1,940	7,376	9,107	11,455
LU	57,276	55,852	39,385	19,010	15,256	10,496	76,286	71,108	49,881
HU	36,403	40,640	57,848	2,561	178	234	38,964	40,818	58,082
MT	112	442	318	0	8	10	112	450	328
NL	9,924	15,190	25,986	66,310	49,642	48,985	76,234	64,832	74,971
AT	18,757	25,957	28,806	0	0	0	18,757	25,957	28,806
PL	204,374	221,126	227,930	4,197	44,527	81,770	208,571	265,653	309,700
PT	65,012	58,923	54,043	487	25	140	65,499	58,948	54,183
RO	26,116	29,730	59,363	4	532	710	26,120	30,262	60,073
SI	17,835	23,944	42,485	1,182	488	83	19,017	24,432	42,568
SK	24,688	28,245	40,926	18,405	24,293	7,542	43,093	52,538	48,468
FI	4,929	2,187	2,668	1,680	3,544	3,726	6,609	5,731	6,394
SE	5,503		11,771	8,162		0	13,665		11,771
UK	32,284	32,109	35,368	8,672	9,000	10,419	40,956	41,109	45,787
IS	123	376	377	78	45	20	201	421	397
LI	64	61	63	0	160	139	64	221	202
NO	1,291	1,872	2,163	0	0	0	1,291	1,872	2,163
Total	1,010,533	1,058,314	1,208,805	278,843	271,569	298,909	1,289,376	1,329,883	1,507,714

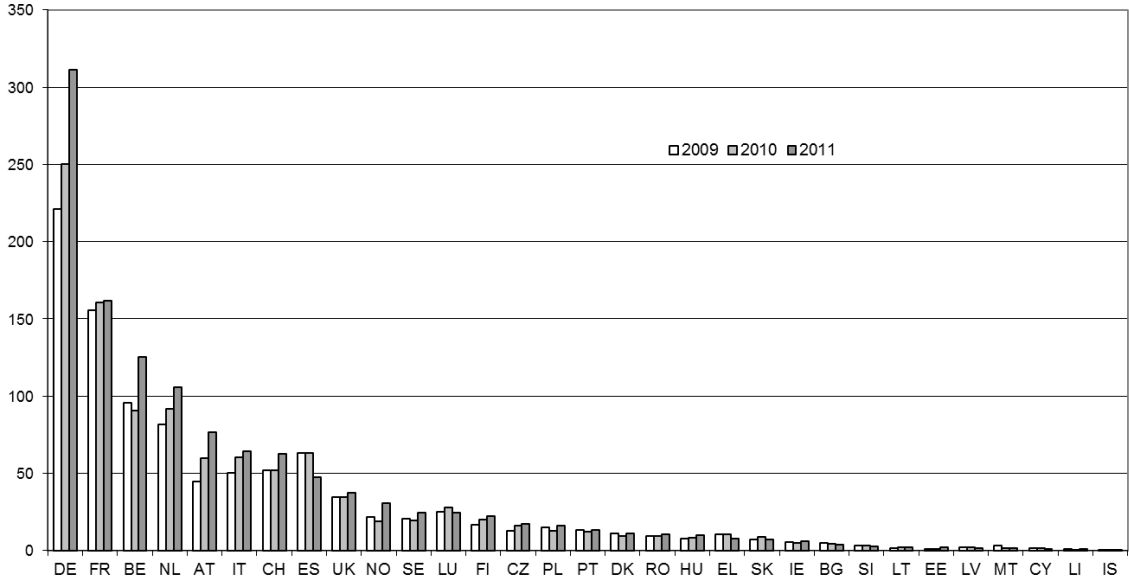
Source: Administrative data from EU Member States, IS, LI and NO on PD A1 issued according to Council Regulation (EC) No 883/2004 on the coordination of social security system.

Notes: Figures for postings originating in the UK relate, for 2009 data to April 2009 to March 2010. Figures for Germany relate, for 2009 data to 1 January 2009 to 30 November 2009. No data for Sweden for 2010

Figure 5 and table 7 show a comparison of postings by destination country between 2009 and 2011.

- ⇒ The comparison over time by destination country shows a rather stable pattern in the order of main destination countries. From 2009 to 2011, the following trends can however be noted: strong increase in the number of posted workers received for Austria (+32,000 or +71%), Norway (+9,000, or +42%) and Germany (+90,000 or +41%). In absolute terms, strong increases also occurred towards Belgium (+30,000), the Netherlands (+24,000), Italy (+14,000) and Switzerland (+11,000).
- ⇒ On the contrary the number of posted workers has decreased towards Spain (-16,000 or -25%) and Greece (-3,000 or -26%), most probably in relation with the decline of labour demand subsequent to the crisis in those two countries.

Figure 5: Postings by destination country, 2009 - 2011 (in thousand)



Source: Administrative data from EU Member States, IS, LI and NO on PD A1 issued according to Council Regulation (EC) No 883/2004 on the coordination of social security system.

Notes: Figures for postings originating in the UK relate for 2009 data to April 2009 to March 2010. Figures for postings originating in Germany relate for 2009 data to 1 January 2009 to 30 November 2009. Workers posted from Sweden are included only for 2011.

Table 7: Postings by destination country, 2009 – 2011

Destination country	2009	2010	2011
BE	95,589	90,540	125,107
BG	5,096	4,483	4,006
CZ	12,756	15,892	17,144
DK	10,928	9,608	11,002
DE	221,222	250,054	311,361
EE	1,225	1,235	1,904
IE	5,357	5,014	6,084
EL	10,489	10,656	7,763
ES	63,390	63,304	47,640
FR	155,601	160,532	161,954
IT	50,365	60,460	64,223
CY	1,524	1,702	1,042
LV	1,921	1,851	1,788
LT	1,655	1,850	2,248
LU	25,042	27,730	24,295
HU	7,438	8,457	9,924
MT	2,976	1,308	1,449
NL	81,852	91,560	105,885
AT	44,806	59,642	76,335
PL	14,704	12,877	16,013
PT	13,028	12,193	13,345
RO	9,320	9,445	10,476
SI	2,969	3,391	2,676
SK	7,193	8,692	6,876
FI	16,920	20,205	22,183
SE	20,792	19,464	24,412
UK	34,760	34,321	37,247
IS	699	543	559
LI	833	572	763
NO	21,603	18,771	30,523
CH	51,987	51,962	62,578

Source: Administrative data from EU Member States, IS, LI and NO on PD A1 issued according to Council Regulation (EC) No 883/2004 on the coordination of social security system.

Notes: Figures for postings originating in the UK relate for 2009 data to April 2009 to March 2010. Figures for postings originating in Germany relate for 2009 data to 1 January 2009 to 30 November 2009. Workers posted from Sweden are included only for 2011.

4. BREAKDOWN BY SECTOR OF ECONOMIC ACTIVITY

- ⇒ **Table 8** shows the sectoral distribution of PD A1 for the 14 countries which provided data by sector breakdown in 2011.
- ⇒ Due to the fact that many countries (including France and Germany, two of the three most important sending countries) did not provide a breakdown by economic activity conclusions on the distribution of posted workers by sectors of economic activity are rather difficult.

- ⇒ The data from those 14 countries which did provide a sectoral breakdown suggest that on average in 2011 around 71% of PD A1 certificates issued were for industry, including 43% into the construction sector⁷. The share of the PD A1 issued for activities in the service sector is around 27% and agriculture and fishing make for around 2.5% of all PD A1.
- ⇒ Poland, the largest sending country overall, displayed in 2011 a quite large share in the construction sector (47%). It is also the case for posted workers from Portugal (67%) and Estonia (77%).

Table 8: PD A1 by economic activity, 2011

Reporting country	Sectors of economic activity (in % of total)									
	Agriculture, hunting and fishing NACE A	Industry NACE B to F			Services NACE G to T					
		Industry Total	of which	Construction NACE F	Services Total	Wholesale and retail trade NACE G	Accommodation and food services activities NACE I	Transportation and storage; Information and communication NACE H and J	Financial and insurance; Real estate; Professional, scientific and technical activities; Administrative and support service activities NACE K, L, M and N	Education, health and social work, arts and other services NACE P, Q, R and S
BE	0.5	44.9	24.8	54.6	4.2	1.0	2.5	35.4	11.5	
CZ	0.8	60.8	39.6	38.5	2.5	0.5	2.4	4.0	29.2	
EE	3.7	86.4	77.0	9.9	0.4	0.2	0.9	4.0	2.0	
IS	11.8	41.4	41.4	46.8	0.3	3.2	4.3	8.0	31.0	
CY	0.0	0.0	0.0	100.0	56.4	5.1	0.0	25.6	12.8	
RO	3.2	86.3	28.4	10.5	0.4	0.6	5.1	1.6	2.7	
PL	3.6	67.4	46.8	29.0	1.1	0.1	1.6	1.2	3.9	
PT	3.6	88.8	67.5	7.6	0.0	0.0	0.1	7.3	0.1	
LI	0.0	98.4	0.0	1.6	0.0	0.0	0.0	1.6	0.0	
LT	2.5	67.6	36.0	29.9	0.3	0.0	3.0	0.1	0.0	
MT	0.0	47.5	0.0	52.5	2.5	0.6	4.7	39.6	5.0	
FI	0.2	40.3	2.9	59.5	0.1	0.7	30.4	15.2	13.0	
HU	0.2	88.4	37.8	11.4	0.4	0.1	0.8	0.2	0.8	
LU	0.0	50.1	40.4	49.9	3.0	0.5	3.1	41.3	2.0	
Sum	2.5	70.7	43.5	26.8	1.3	0.3	2.1	8.3	4.4	

Source: Administrative data from EU Member States, IS, LI and NO on PD A1 issued according to Council Regulation (EC) No 883/2004 on the coordination of social security system.

Notes: For missing countries no sectoral breakdown of PD A1 certificates available. Note that the shares are calculated among the total of the three main sectors (Agriculture, Industry and Services) and that PD A1 for which the sector was not mentioned were therefore excluded from the total.

⁷ These are much larger shares than in 2009, though the distribution is also influenced by which countries reported data with a sectoral breakdown (i.e.: the fact that UK is not included in table 8 has a large impact on the overall share of industry – including construction - versus services).

5. STRENGTHS AND WEAKNESSES OF THE A1 DATA

- ⇒ The A1 data collection fills an important information gap concerning the posting of workers. To our knowledge, it is still the only source which allows for a comparable overview of the number of postings across EU-Member States. DG Employment therefore recommends continuing this exercise in the future and plans next data collection exercise in 2014 to cover years 2012 and 2013.
- ⇒ However, the usefulness and the quality of the data remain limited in a number of ways. We repeat here the main limits already pointed in the previous notes 409/09 prepared in October 2009 and 019/11 from January 2011 :
- While almost all countries transmitted figures, two countries (Sweden for 2010, Switzerland for 2010 and 2011) did not provide any data and therefore prevented the calculation of a complete sending by destination country matrix.
 - At a more methodological level, the available data only provide the number of PD A1 certificates issued in each country, but do not contain any information on the duration of postings or the hours worked. In other words, the present data are not really an indicator for labour input. It is therefore not possible to use these figures to calculate the impact of postings on the level and structure of employment and wages in the sending and receiving countries.
 - Moreover, a structural analysis of the labour market impact of postings is prevented by the lack of sectoral breakdown for the data of the main sending countries and a general lack of detail by economic activity. While postings tend to concentrate on a few specific activities (e.g. construction), the available data are not detailed enough to allow any deeper analysis.
 - In addition, there is still some uncertainty to what extent the number of PD A1 recorded by countries is a precise proxy of the actual number of postings taking place. Firstly, it is not known how many PD A1 translate into actual postings. Secondly, there is no information on undocumented postings, i.e. workers posted by their employers without having applied for a PD A1.
 - The presented data are not data on postings according to the "posting" definition of Directive 96/71/EC concerning the posting of workers in the framework of the provision of services. The conditions which must be fulfilled in order to qualify as posted worker according to EU rules on the coordination of social security systems are fundamentally different from those under Directive 96/71/EC (e.g. strict time limitation of maximum 24 months applies in the social security field). A posted worker in the framework of the provision of services must not always fulfil the condition for issuing PD A1 confirming that s/he will remain subject to the social security legislation of the state s/he were posted from. Such a worker is a posted worker in accordance with Directive 96/71/EC but without PD A1 and does not therefore appear in the reported data.
- ⇒ Some of these limitations can be addressed by further improving the coverage of the present data collection exercise. Other limitations, in particular concerning labour input, sector detail or undocumented postings would require a further investigation.

ANNEX 1: DETAILED COUNTRY-BY-COUNTRY DATA TABLES ON PD A1

Table 9a: PD A1 issued in 29 reporting countries by destination, 2010

Destination country	Sending country																				Total	of which from												
	BE	BG	CZ	DK	DE	EE	IE	EL	ES	FR	IT	CY	LV	LT	LU	HU	MT	NL	AT	PL		PT	RO	SI	SK	FI	UK	IS	LI	NO	EU-14	EU-2	EEA-EFTA	
BE	0	405	852	98	15373	40	116	21	1330	21149	1854	0	95	297	10748	2067	7	5625	489	19157	5126	1637	1003	2276	131	540	11	93	90540	62600	27836	104		
BG	34	0	82	20	1117	3	2	58	355	493	70	0	1	2	8	151	0	23	228	1349	30	168	35	77	45	26	0	6	4483	2609	1868	6		
CZ	202	23	0	82	4404	2	6	2	287	1885	123	0	7	21	22	171	0	69	1279	2934	22	4	113	4159	7	63	1	4	15892	8453	7434	5		
DK	130	12	165	0	4041	35	2	0	136	1131	167	0	28	29	38	154	0	126	75	2549	111	77	43	167	33	147	68	154	9608	6137	3249	222		
DE	4530	2546	4465	474	0	207	217	114	4253	23177	3107	0	132	1056	5171	26889	10	3782	11918	113446	5175	16171	10641	9466	261	1472	58	17	119	250054	63651	186209	194	
EE	5	0	18	15	186	0	0	0	15	140	8	0	100	37	3	2	4	9	616	0	0	0	3	70	0	0	1	1	1235	455	779	1		
IE	97	2	27	59	831	0	0	0	307	1446	43	0	1	8	135	23	15	43	114	1197	251	0	26	19	14	351	0	5	5014	3691	1318	5		
EL	125	139	87	135	1161	9	2	0	438	2067	1011	70	31	70	28	13	152	209	97	624	40	581	28	69	72	3364	0	1	33	10656	8749	1873	34	
ES	1052	156	710	331	10715	17	34	39	0	17010	2755	0	10	188	228	206	2	702	598	18968	385	293	297	205	5767	18	1	162	63304	58404	4719	181		
FR	18479	344	1495	544	17893	196	185	66	16782	0	5555	0	196	641	37115	1136	0	1781	955	22865	17191	4251	549	2474	106	9576	11	2	144	160532	126228	34147	157	
IT	1379	367	865	277	15198	28	62	36	6238	15449	0	0	269	114	333	983	15	787	2697	3903	1451	3086	3402	912	107	2394	14	94	60460	46408	13944	108		
CY	17	34	16	30	192	0	0	73	46	155	36	0	3	0	3	0	0	4	9	326	46	40	0	3	661	0	8	8	1702	1272	422	8		
LV	20	5	49	12	397	41	1	0	50	182	11	0	0	221	17	27	0	8	6	756	0	0	2	4	1	39	1	1	1851	744	1105	2		
LT	14	0	55	27	354	42	0	0	34	181	23	0	55	0	2	143	0	2	10	881	0	0	0	14	2	0	1	10	1850	649	1190	11		
LU	5129	2	108	6	16124	1	7	1	41	3451	114	11	1	0	0	152	16	186	300	1622	258	64	24	62	42	3	5	27730	25659	2063	8			
HU	218	20	200	15	1815	0	5	3	269	1792	301	0	6	0	46	0	2	45	745	1123	10	573	163	968	16	108	1	13	8457	5388	3055	14		
MT	7	0	23	22	266	1	2	0	50	400	57	0	0	0	13	30	0	9	6	280	16	0	1	5	10	105	1	4	1308	963	340	5		
NL	14653	845	927	124	27391	301	477	6	2168	5719	1977	0	95	662	330	1435	195	0	864	15901	7423	1518	1976	2109	50	4206	7	201	91560	65388	25964	208		
AT	387	150	1926	105	36567	2	7	5	325	1733	1082	0	8	0	127	3938	3	436	0	4526	1363	404	3449	2484	29	541	5	29	11	59642	42707	16890	45	
PL	324	60	567	99	5221	23	48	1	640	3702	93	0	40	288	112	114	2	109	433	0	64	123	46	504	70	159	0	35	12877	11075	1767	35		
PT	218	2	54	28	1339	1	4	6	5259	3059	225	0	0	37	108	0	99	172	609	0	174	48	2	77	643	12	1	16	12193	11166	998	29		
RO	196	161	165	18	2669	2	4	97	748	2496	406	0	0	16	698	1	43	539	830	36	0	76	183	9	30	1	21	9445	7307	2116	22			
SI	31	7	37	1	862	0	2	0	59	372	135	0	0	19	2	249	0	9	324	1081	0	7	0	187	6	0	0	1	3391	1803	1587	1		
SK	49	217	1607	20	1718	0	3	0	59	773	350	0	5	0	64	908	1	1	659	1941	3	43	200	0	14	30	1	2	8692	3743	4946	3		
FI	161	13	105	37	1796	11701	14	0	98	1295	68	0	156	523	24	111	0	28	111	2996	15	10	299	465	0	141	4	34	20205	3788	16379	38		
SE	163	21	330	136	4241	374	208	7	292	2709	213	0	726	836	103	173	0	95	296	6023	60	58	148	489	397	183	4	179	19464	11033	9178	183		
UK	1314	93	404	750	5670	7	447	97	2889	13255	826	0	21	26	351	337	16	642	409	4529	752	132	396	266	229	0	30	433	34321	27631	6227	463		
IS	2	0	22	72	220	0	0	0	5	70	2	0	0	18	4	1	0	0	5	68	0	7	15	5	4	0	0	23	543	384	136	23		
LI	3	0	20	0	276	0	0	0	0	44	1	0	0	5	2	0	1	80	140	0	0	0	0	0	0	0	0	0	572	410	162	0		
NO	98	104	267	4637	3345	532	61	2	179	1141	107	0	240	1402	17	93	0	137	330	4212	231	190	183	225	186	733	119	0	18771	11204	7448	119		
CH	825	6	181	88	20054	15	19	8	735	7420	14710	0	18	4	750	325	3	185	2200	2187	281	27	785	337	36	688	5	10	60	51962	47999	3888	75	
Sub-total postings	49862	5734	15829	9262	201436	13580	1935	642	44087	133896	35430	81	3424	6462	55852	40640	442	15190	25957	22126	58923	29730	23944	28245	2187	32109	376	61	1872	105814	666768	389237	2309	
of which																																		
EU-15	47817	5097	12520	4104	158340	12919	1782	398	40556	112650	18997	81	2949	4450	54768	37725	431	14541	19095	202402	58184	28548	22325	21547	1711	29367	245	51	1683	915283	562310	350994	1979	
EU-12	1117	527	2819	361	19201	114	73	234	2612	12571	1613	0	217	588	308	2494	8	326	4247	12117	227	958	636	6131	250	1321	7	0	106	7183	44461	26609	113	
EFTA	928	10	490	4797	23895	547	80	10	919	8675	14820	0	258	1424	776	421	3	323	2615	6607	512	224	983	567	226	1421	124	10	83	71848	59997	11634	217	
Int. Transport (art 13)	0		5590	880	7	300	1524	4		117	0	0	5	91	10174	28	1	2655	0	0	1	0	0	5208	0	780	0	0	0	27365	16142	11223	0	
2 or more countries (art 13)	18208		4099	5027	16799	2297	556	0	13718	897	1619	515	273	2061	4987	4	3	44822	0	44018	24	0	429	1311	1881	4559	34	138	0	168279	113097	55010	172	
Other (e.g.: art 16)	1436		285		8117	327	339	0	2995	1637	2691	0	1232	493	95	146	4	2165	0	509	0	532	59	17774	1663	3661	11	22	0	46193	24799	21361	33	
Multiple destinations										28822	582																			29404	29404	0	0	
Sub-total other	16644	328	9974	5907	24923	2924	2419	4	16713	31473	4892	515	1510	2645	15256	178	8	49642	0	44527	25	532	488	24293	3544	9000	45	160	0	271569	183442	87922	205	
Total	69506	6062	25803	15169	226359	16504	4354	646	60800	165369	40322	596	4934	9107	71108	40818	450	64832	25957	265653	58948	30262	24432	52538	5731	41109	421	221	1872	1329883	850210	477159	2514	

Source: Administrative data from EU Member States, IS, LI and NO on PD A1 issued according to Council Regulation (EC) No 883/2004 on the coordination of social security system.

Note: Figures do not include PD A1 issued by SE as this country did not provide data for 2010. 'EU-14' refers to EU-15 countries minus Sweden. CH is only included as a destination country as it did not report any data on PDA1 issued for neither 2010, nor 2011.

Table 9b: PD A1 issued in 29 reporting countries by destination, 2010 (column %)

Destination country	Sending country																				Total	of which from													
	BE	BG	CZ	DK	DE	EE	IE	EL	ES	FR	IT	CY	LV	LT	LU	HU	MT	NL	AT	PL		PT	RO	SI	SK	FI	UK	IS	LI	NO	EU-14	EU-12	EEA-EFTA		
	BE	0.0	6.7	3.3	0.6	6.8	0.2	2.7	3.3	2.2	12.8	4.6	0.0	19	3.3	15.1	5.1	16	8.7	19	7.2	8.7	5.4	4.1	4.3	2.3	13	2.6	0.0	5.0	6.8	7.4	5.8	4.1	
	BG	0.0	0.0	0.3	0.1	0.5	0.0	0.0	9.0	0.6	0.3	0.2	0.0	0.0	0.0	0.0	0.4	0.0	0.0	0.9	0.5	0.1	0.6	0.1	0.1	0.8	0.3	0.0	0.0	0.3	0.3	0.3	0.4	0.2	
	CZ	0.3	0.4	0.0	0.5	1.9	0.0	0.1	0.3	0.5	1.1	0.3	0.0	0.1	0.2	0.0	0.4	0.0	0.1	4.9	1.1	0.0	0.0	0.5	7.9	0.1	0.2	0.2	0.0	0.2	1.2	1.0	1.6	0.2	
	DK	0.2	0.2	0.6	0.0	1.8	0.2	0.0	0.0	0.2	0.7	0.4	0.0	0.6	0.3	0.1	0.4	0.0	0.2	0.3	1.0	0.2	0.3	0.2	0.3	0.6	0.4	16.2	0.0	8.2	0.7	0.7	0.7	8.8	
	DE	6.5	42.0	17.3	3.1	0.0	13	5.0	17.6	7.0	14.0	7.7	0.0	26.6	11.6	7.3	65.9	2.2	5.8	45.9	42.7	8.8	53.4	43.6	18.0	4.6	3.6	13.8	7.7	6.4	18.8	7.5	39.0	7.7	
	EE	0.0	0.0	0.1	0.1	0.1	0.0	0.0	0.0	0.0	0.1	0.0	0.0	2.0	0.4	0.0	0.0	0.4	0.0	0.0	0.2	0.0	0.0	0.0	0.0	12	0.0	0.0	0.0	0.1	0.1	0.1	0.2	0.0	
	IE	0.1	0.0	0.1	0.4	0.4	0.0	0.0	0.0	0.5	0.9	0.1	0.0	0.0	0.1	0.2	0.1	3.3	0.1	0.4	0.5	0.4	0.0	0.1	0.0	0.2	0.9	0.0	0.0	0.3	0.4	0.4	0.3	0.2	
	EL	0.2	2.3	0.3	0.9	0.5	0.1	0.0	0.0	0.7	1.2	2.5	11.7	0.6	0.8	0.0	0.0	33.8	0.3	0.4	0.2	0.1	1.9	0.1	0.1	1.3	8.2	0.0	0.5	1.8	0.8	1.0	0.4	1.4	
	ES	1.5	2.6	2.8	2.2	4.7	0.1	0.8	6.0	0.0	10.3	6.8	0.0	0.2	2.1	0.3	0.5	0.4	1.1	2.3	0.9	32.2	1.3	1.2	0.6	3.6	14.0	4.3	0.5	8.7	4.8	6.9	1.0	7.2	
	FR	26.6	5.7	5.8	3.6	7.9	12	4.2	10.2	27.6	0.0	13.8	0.0	4.0	7.0	52.2	2.8	0.0	2.7	3.7	8.6	29.2	14.0	2.2	4.7	1.8	23.3	2.6	0.9	7.7	12.1	14.8	7.2	6.2	
	IT	2.0	6.1	3.4	1.8	6.7	0.2	1.4	5.6	10.3	9.3	0.0	0.0	5.5	1.3	0.5	2.4	3.3	1.2	10.4	1.5	2.5	10.2	13.9	1.7	1.9	5.8	3.3	0.0	5.0	4.5	5.5	2.9	4.3	
	CY	0.0	0.6	0.1	0.2	0.1	0.0	0.0	11.3	0.1	0.1	0.1	0.0	0.1	0.0	0.0	0.0	0.0	0.0	0.0	0.1	0.1	0.0	0.0	0.0	1.6	0.0	0.0	0.4	0.1	0.1	0.1	0.3		
	LV	0.0	0.1	0.2	0.1	0.2	0.2	0.0	0.0	0.1	0.1	0.0	0.0	0.0	2.4	0.0	0.1	0.0	0.0	0.0	0.3	0.0	0.0	0.0	0.0	0.0	0.1	0.2	0.0	0.1	0.1	0.1	0.2	0.1	
	LT	0.0	0.0	0.2	0.2	0.2	0.3	0.0	0.0	0.1	0.1	0.1	0.0	1.1	0.0	0.0	0.4	0.0	0.0	0.0	0.3	0.0	0.0	0.0	0.0	0.0	0.0	0.2	0.0	0.5	0.1	0.1	0.2	0.4	
	LU	7.4	0.0	0.4	0.0	7.1	0.0	0.2	0.2	0.1	2.1	0.3	1.8	0.0	0.0	0.0	0.4	3.6	0.3	1.2	0.6	0.4	0.2	0.1	0.1	0.0	0.1	0.7	0.0	0.3	2.1	3.0	0.4	0.3	
	HU	0.3	0.3	0.8	0.1	0.8	0.0	0.1	0.5	0.4	1.1	0.7	0.0	0.1	0.0	0.1	0.0	0.4	0.1	2.9	0.4	0.0	1.9	0.7	1.8	0.3	0.3	0.2	0.0	0.7	0.6	0.6	0.6		
	MT	0.0	0.0	0.1	0.1	0.1	0.0	0.0	0.0	0.1	0.2	0.1	0.0	0.0	0.0	0.0	0.1	0.0	0.0	0.0	0.1	0.0	0.0	0.0	0.0	0.2	0.3	0.2	0.0	0.2	0.1	0.1	0.1	0.2	
	NL	21.1	13.9	3.6	0.8	12.1	1.8	11.0	0.9	3.6	3.5	4.9	0.0	1.9	7.3	0.5	3.5	43.3	0.0	3.3	6.0	12.6	5.0	8.1	4.0	0.9	10.2	1.7	0.0	10.7	6.9	7.7	5.4	8.3	
	AT	0.6	2.5	7.5	0.7	16.2	0.0	0.2	0.8	0.5	1.0	2.7	0.0	0.2	0.0	0.2	9.6	0.7	0.7	0.0	1.7	2.3	1.3	14.1	4.7	0.5	1.3	1.2	13.1	0.6	4.5	5.0	3.5	1.8	
	PT	0.5	1.0	2.2	0.7	2.3	0.1	1.1	0.2	1.1	2.2	0.2	0.0	0.8	3.2	0.2	0.3	0.4	0.2	1.7	0.0	0.1	0.4	0.2	1.0	1.2	0.4	0.0	0.0	1.9	1.0	1.3	0.4	1.4	
	RO	0.3	0.0	0.2	0.2	0.6	0.0	0.1	0.9	8.6	1.8	0.6	0.0	0.0	0.0	0.1	0.3	0.0	0.2	0.7	0.2	0.0	0.6	0.2	0.0	1.3	1.6	2.9	0.5	0.9	0.9	1.3	0.2	1.2	
	SI	0.0	0.1	0.1	0.0	0.4	0.0	0.0	0.0	0.1	0.2	0.3	0.0	0.0	0.2	0.0	0.6	0.0	0.0	1.2	0.4	0.0	0.0	0.0	0.4	0.1	0.0	0.0	0.0	0.1	0.3	0.2	0.3	0.0	
	SK	0.1	3.6	6.2	0.1	0.8	0.0	0.1	0.0	0.1	0.5	0.9	0.0	0.1	0.0	0.1	2.2	0.2	0.0	2.5	0.7	0.0	0.1	0.8	0.0	0.2	0.1	0.2	0.0	0.1	0.7	0.4	1.0	0.1	
	FI	0.2	0.2	0.4	0.2	0.8	70.9	0.3	0.0	0.2	0.8	0.2	0.0	3.2	5.7	0.0	0.3	0.0	0.0	0.4	1.1	0.0	0.0	1.2	0.9	0.0	0.3	1.0	0.0	1.8	1.5	0.4	3.4	1.5	
	SE	0.2	0.3	1.3	7.5	1.9	2.3	4.8	1.1	0.5	1.6	0.5	0.0	14.7	9.2	0.1	0.4	0.0	0.1	1.1	2.3	0.1	0.2	0.6	0.9	6.9	0.4	1.0	0.0	9.6	1.5	1.2	1.9	7.3	
	UK	1.9	1.5	1.6	4.9	2.5	0.0	10.3	15.0	4.8	8.0	2.0	0.0	0.4	0.3	0.5	0.8	3.6	1.0	1.6	1.7	1.3	0.4	1.6	0.5	4.0	0.0	7.1	0.0	23.1	2.6	3.2	1.3	18.4	
	IS	0.0	0.0	0.1	0.5	0.1	0.0	0.0	0.0	0.0	0.0	0.0	0.0	0.0	0.2	0.0	0.0	0.0	0.0	0.0	0.0	0.0	0.0	0.1	0.0	0.1	0.0	0.0	0.0	1.2	0.0	0.0	0.0	0.9	
	LI	0.0	0.0	0.1	0.0	0.1	0.0	0.0	0.0	0.0	0.0	0.0	0.0	0.0	0.0	0.0	0.0	0.0	0.0	0.3	0.1	0.0	0.0	0.0	0.0	0.0	0.0	0.0	0.0	0.0	0.0	0.0	0.0	0.0	
	NO	0.1	1.7	1.0	30.6	1.5	3.2	1.4	0.3	0.3	0.7	0.3	0.0	4.9	15.4	0.0	0.2	0.0	0.2	1.3	1.6	0.4	0.6	0.7	0.4	3.2	1.8	28.3	0.0	0.0	1.4	1.3	1.6	4.7	
	CH	1.2	0.1	0.7	0.6	8.9	0.1	0.4	1.2	1.2	4.5	36.5	0.0	0.4	0.0	1.1	0.8	0.7	0.3	8.5	0.8	0.5	0.1	3.2	0.6	0.6	1.7	1.2	4.5	3.2	3.9	5.6	0.8	3.0	
	Sub-total postings	71.7	94.6	61.3	61.1	89.0	82.3	44.4	99.4	72.5	81.0	87.9	13.6	69.4	71.0	78.5	99.6	98.2	23.4	100.0	83.2	100.0	98.2	98.0	53.8	38.2	78.1	89.3	27.6	100.0	79.6	78.4	81.6	91.8	
	of which	EU-15	68.8	84.1	48.5	27.1	70.0	78.3	40.9	61.6	66.7	68.1	47.1	13.6	59.8	48.9	77.0	92.4	95.8	22.4	73.6	76.2	98.7	94.3	91.4	41.0	29.9	71.4	58.2	23.1	89.9	68.8	66.1	73.6	78.7
	EU-12	1.6	8.7	10.9	2.4	8.5	0.7	1.7	36.2	4.3	7.6	4.0	0.0	4.4	6.5	0.4	6.1	1.8	0.5	16.4	4.6	0.4	3.2	2.6	11.7	4.4	3.2	1.7	0.0	5.7	5.4	5.2	5.6	4.5	
	EFTA	1.3	1.8	1.9	31.6	10.6	3.3	1.8	1.5	1.5	5.2	36.8	0.0	5.2	15.6	1.1	1.0	0.7	0.5	10.1	2.5	0.9	0.7	4.0	1.1	3.9	3.5	29.5	4.5	4.4	5.4	7.1	2.4	8.6	
	Int. Transport (art 13)	0.0	0.0	21.7	5.8	0.0	1.8	35.0	0.6	0.0	0.1	0.0	0.0	0.1	1.0	14.3	0.1	0.2	4.1	0.0	0.0	0.0	0.0	0.0	9.9	0.0	1.9	0.0	0.0	2.1	1.9	2.4	0.0	0.0	
	2 or more countries (art 13)	26.2	0.0	15.9	33.1	7.4	13.9	12.8	0.0	22.6	0.5	4.0	86.4	5.5	22.6	7.0	0.0	0.7	69.1	0.0	16.6	0.0	0.0	1.8	2.5	32.8	11.1	8.1	62.4	0.0	12.7	13.3	11.5	6.8	
	Other (e.g.: art 16)	2.1	0.0	1.1	0.0	3.6	2.0	7.8	0.0	4.9	1.0	6.7	0.0	25.0	5.4	0.1	0.4	0.9	3.3	0.0	0.2	0.0	1.8	0.2	33.8	29.0	8.9	2.6	10.0	0.0	3.5	2.9	4.5	1.3	
	Multiple destinations	0.0	0.0	0.0	0.0	0.0	0.0	0.0	0.0	0.0	17.4	1.4	0.0	0.0	0.0	0.0	0.0	0.0	0.0	0.0	0.0	0.0	0.0	0.0	0.0	0.0	0.0	0.0	0.0	2.2	3.5	0.0	0.0	0.0	
	Sub-total other	28.3	5.4	38.7	38.9	11.0	17.7	55.6	0.6	27.5	19.0	12.1	86.4	30.6	29.0	21.5	0.4	1.8	76.6	0.0	16.8	0.0	1.8	2.0	46.2	61.8	21.9	10.7	72.4	0.0	20.4	21.6	18.4	8.2	
	Total	100	100	100	100	100	100	100	100	100	100	100	100	100	100	100	100	100	100	100	100	100	100	100	100	100	100	100	100	100	100	100	100	100	100

Source: Administrative data from EU Member States, IS, LI and NO on PD A1 issued according to Council Regulation (EC) No 883/2004 on the coordination of social security system.

Note: Figures do not include PD A1 issued by SE as this country did not provide data for 2010. 'EU-14' refers to EU-15 countries minus Sweden. CH is only included as a destination country as it did not report any data on PDA1 issued for neither 2010, nor 2011.

Table 9c: PD A1 issued in 29 reporting countries by destination, 2010 (row %)

Destination country	Sending country																												Total	of which from					
	BE	BG	CZ	DK	DE	EE	IE	EL	ES	FR	IT	CY	LV	LT	LU	HU	MT	NL	AT	PL	PT	RO	SI	SK	FI	UK	IS	LI		NO	EU-14	EU-12	EFTA		
	BE	0.0	0.4	0.9	0.1	17.0	0.0	0.1	0.0	15	23.4	2.0	0.0	0.1	0.3	11.9	2.3	0.0	6.2	0.5	21.2	5.7	1.8	1.1	2.5	0.1	0.6	0.0	0.0	0.1	100	69.1	30.7	0.1	
	BG	0.8	0.0	18	0.4	24.9	0.1	0.0	13	7.9	11.0	16	0.0	0.0	0.0	0.2	3.4	0.0	0.5	5.1	30.1	0.7	3.7	0.8	1.7	10	2.8	0.0	0.0	0.1	100	58.2	41.7	0.1	
	CZ	13	0.1	0.0	0.5	27.7	0.0	0.0	0.0	18	11.9	0.8	0.0	0.0	0.1	0.1	11	0.0	0.4	8.0	18.5	0.1	0.0	0.7	26.2	0.0	0.4	0.0	0.0	0.0	100	53.2	46.8	0.0	
	DK	14	0.1	17	0.0	42.1	0.4	0.0	0.0	14	11.8	1.7	0.0	0.3	0.3	0.4	16	0.0	13	0.8	26.5	1.2	0.8	0.4	16	0.3	15	0.7	0.0	16	100	63.9	33.8	2.3	
	DE	18	1.0	18	0.2	0.0	0.1	0.1	0.0	17	9.3	1.2	0.0	0.5	0.4	2.1	10.8	0.0	15	4.8	45.4	2.1	6.5	4.3	3.8	0.1	0.6	0.0	0.0	0.0	100	25.5	74.5	0.1	
	EE	0.4	0.0	15	12	15.1	0.0	0.0	0.0	12	11.3	0.6	0.0	8.1	3.0	0.2	0.2	0.2	0.3	0.7	49.9	0.0	0.0	0.0	0.2	5.7	0.0	0.0	0.0	0.1	100	36.8	63.1	0.1	
	IE	19	0.0	0.5	12	16.6	0.0	0.0	0.0	6.1	28.8	0.9	0.0	0.0	0.2	2.7	0.5	0.3	0.9	2.3	23.9	5.0	0.0	0.5	0.4	0.3	7.0	0.0	0.0	0.1	100	73.6	26.3	0.1	
	EL	12	1.3	0.8	1.3	10.9	0.1	0.0	0.0	4.1	19.4	9.5	0.7	0.3	0.7	0.3	0.1	1.4	2.0	0.9	5.9	0.4	5.5	0.3	0.6	0.7	31.6	0.0	0.0	0.3	100	82.1	17.6	0.3	
	ES	17	0.2	1.1	0.5	16.9	0.0	0.1	0.1	0.0	26.9	4.4	0.0	0.0	0.3	0.4	0.3	0.0	1.1	0.9	3.9	30.0	0.6	0.5	0.5	0.3	9.1	0.0	0.0	0.3	100	92.3	7.5	0.3	
	FR	115	0.2	0.9	0.3	11.1	0.1	0.1	0.0	10.5	0.0	3.5	0.0	0.1	0.4	23.1	0.7	0.0	11	0.6	14.2	10.7	2.6	0.3	1.5	0.1	6.0	0.0	0.0	0.1	100	78.6	21.3	0.1	
	IT	2.3	0.6	14	0.5	25.1	0.0	0.1	0.1	10.3	25.6	0.0	0.0	0.4	0.2	0.6	16	0.0	13	4.5	6.5	2.4	5.1	5.6	1.5	0.2	4.0	0.0	0.0	0.2	100	76.8	23.1	0.2	
	CY	10	2.0	0.9	1.8	11.3	0.0	0.0	4.3	2.7	9.1	2.1	0.0	0.2	0.0	0.2	0.0	0.0	0.2	0.5	19.2	2.7	2.4	0.0	0.2	0.0	38.8	0.0	0.0	0.5	100	74.7	24.8	0.5	
	LV	1.1	0.3	2.6	0.6	21.4	2.2	0.1	0.0	2.7	9.8	0.6	0.0	0.0	11.9	0.9	1.5	0.0	0.4	0.3	40.8	0.0	0.0	0.1	0.2	0.1	2.1	0.1	0.0	0.1	100	40.2	59.7	0.1	
	LT	0.8	0.0	3.0	1.5	19.1	2.3	0.0	0.0	1.8	9.8	1.2	0.0	3.0	0.0	0.1	7.7	0.0	0.1	0.6	14.2	10.7	2.6	0.3	1.5	0.1	6.0	0.0	0.0	0.5	100	50.1	64.3	0.6	
	LU	18.5	0.0	0.4	0.0	58.1	0.0	0.0	0.0	0.1	12.4	0.4	0.0	0.0	0.0	0.0	0.5	0.1	0.7	1.1	5.8	0.9	0.2	0.1	0.2	0.0	0.2	0.0	0.0	0.0	100	92.5	7.4	0.0	
	HU	2.6	0.2	2.4	0.2	21.5	0.0	0.1	0.0	3.2	21.2	3.6	0.0	0.1	0.0	0.5	0.0	0.0	0.5	8.8	13.3	0.1	6.8	1.9	11.4	0.2	1.3	0.0	0.0	0.2	100	63.7	36.1	0.2	
	MT	0.5	0.0	1.8	1.7	20.3	0.1	0.2	0.0	3.8	30.6	4.4	0.0	0.0	0.0	1.0	2.3	0.0	0.7	0.5	21.4	1.2	0.0	0.1	0.4	0.8	8.0	0.1	0.0	0.3	100	73.6	26.0	0.4	
	NL	16.0	0.9	1.0	0.1	29.9	0.3	0.5	0.0	2.4	6.2	2.2	0.0	0.1	0.7	0.4	1.6	0.2	0.0	0.9	17.4	8.1	1.7	2.2	2.3	0.1	4.6	0.0	0.0	0.2	100	71.4	28.4	0.2	
	AT	0.6	0.3	3.2	0.2	61.3	0.0	0.0	0.0	0.5	2.9	1.8	0.0	0.0	0.0	0.2	6.6	0.0	0.7	0.0	7.6	2.3	0.7	5.8	4.2	0.0	0.9	0.0	0.0	0.0	100	71.6	28.3	0.1	
	PL	2.5	0.5	4.4	0.8	40.5	0.2	0.4	0.0	5.0	28.7	0.7	0.0	0.3	2.2	0.9	0.9	0.0	0.8	3.4	0.0	0.5	1.0	0.4	3.9	0.5	1.2	0.0	0.0	0.3	100	86.0	13.7	0.3	
	PT	1.8	0.0	0.4	0.2	11.0	0.0	0.0	0.0	43.1	25.1	1.8	0.0	0.0	0.0	0.3	0.9	0.0	0.8	1.4	5.0	0.0	1.4	0.4	0.0	0.6	5.3	0.1	0.0	0.1	100	91.6	8.2	0.2	
	RO	2.1	1.7	1.7	0.2	28.3	0.0	0.0	1.0	7.9	26.4	4.3	0.0	0.0	0.0	0.2	7.4	0.0	0.5	5.7	8.8	0.4	0.0	0.8	1.9	0.1	0.3	0.0	0.0	0.2	100	77.4	22.4	0.2	
	SI	0.9	0.2	1.1	0.0	25.4	0.0	0.1	0.0	1.7	11.0	4.0	0.0	0.0	0.6	0.1	7.3	0.0	0.3	9.6	31.9	0.0	0.2	0.0	5.5	0.2	0.0	0.0	0.0	0.0	100	53.2	46.8	0.0	
	SK	0.6	2.5	18.5	0.2	19.8	0.0	0.0	0.0	0.7	8.9	4.0	0.0	0.1	0.0	0.7	10.4	0.0	0.0	7.6	22.3	0.0	0.5	2.3	0.0	0.2	0.3	0.0	0.0	0.0	100	43.1	56.9	0.0	
	FI	0.8	0.1	0.5	0.2	8.9	57.9	0.1	0.0	0.5	6.4	0.3	0.0	0.8	2.6	0.1	0.5	0.0	0.1	0.5	14.8	0.1	0.0	1.5	2.3	0.0	0.7	0.0	0.0	0.2	100	18.7	81.1	0.2	
	SE	0.8	0.1	1.7	5.8	21.8	1.9	1.1	0.0	1.5	13.9	1.1	0.0	3.7	4.3	0.5	0.9	0.0	0.5	1.5	30.9	0.3	0.3	0.8	2.5	2.0	0.9	0.0	0.0	0.9	100	51.9	47.2	0.9	
	UK	3.8	0.3	1.2	2.2	16.5	0.0	1.3	0.3	8.4	38.6	2.4	0.0	0.1	0.1	1.0	1.0	0.0	1.9	1.2	13.2	2.2	0.4	1.2	0.8	0.7	0.0	0.1	0.0	1.3	100	80.5	18.1	1.3	
	IS	0.4	0.0	4.1	13.3	40.5	0.0	0.0	0.0	0.9	12.9	0.4	0.0	0.0	3.3	0.7	0.2	0.0	0.0	0.9	12.5	0.0	1.3	2.8	0.9	0.7	0.0	0.0	0.0	4.2	100	70.7	25.0	4.2	
	LI	0.5	0.0	3.5	0.0	48.3	0.0	0.0	0.0	0.0	7.7	0.2	0.0	0.0	0.0	0.9	0.3	0.0	0.2	14.0	24.5	0.0	0.0	0.0	0.0	0.0	0.0	0.0	0.0	100	71.7	28.3	0.0		
	NO	0.5	0.6	1.4	24.7	17.8	2.8	0.3	0.0	1.0	6.1	0.6	0.0	1.3	7.5	0.1	0.5	0.0	0.7	1.8	22.4	1.2	1.0	1.0	1.2	1.0	3.9	0.6	0.0	0.0	100	59.7	39.7	0.6	
	CH	1.6	0.0	0.3	0.2	38.6	0.0	0.0	0.0	1.4	14.3	28.3	0.0	0.0	0.0	1.4	0.6	0.0	0.4	4.2	4.2	0.5	0.1	1.5	0.6	0.1	1.3	0.0	0.0	0.1	100	92.4	7.5	0.1	
	Sub-total postings	4.7	0.5	1.5	0.9	19.0	1.3	0.2	0.1	4.2	12.7	3.3	0.0	0.3	0.6	5.3	3.8	0.0	1.4	2.5	20.9	5.6	2.8	2.3	2.7	0.2	3.0	0.0	0.0	0.2	100	63.0	36.8	0.2	
	of which	EU-15	5.2	0.6	1.4	0.4	17.3	1.4	0.2	0.0	4.4	12.3	2.1	0.0	0.3	0.5	6.0	4.1	0.0	1.6	2.1	22.1	6.4	3.1	2.4	2.4	0.2	3.2	0.0	0.0	0.2	100	61.4	38.3	0.2
	EU-12	1.6	0.7	4.0	0.5	27.0	0.2	0.1	0.3	3.7	17.7	2.3	0.0	0.3	0.8	0.4	3.5	0.0	0.5	6.0	17.0	0.3	1.3	0.9	8.6	0.4	1.9	0.0	0.0	0.1	100	62.5	37.4	0.2	
	EFTA	1.3	0.2	0.7	6.7	33.3	0.8	0.1	0.0	1.3	12.1	20.6	0.0	0.4	2.0	1.1	0.6	0.0	0.4	3.6	9.2	0.7	0.3	1.4	0.8	0.3	2.0	0.2	0.0	0.1	100	83.5	16.2	0.3	
	Int. Transport (art 13)	0.0	0.0	20.4	3.2	0.0	1.1	5.6	0.0	0.0	0.4	0.0	0.0	0.0	0.3	37.2	0.1	0.0	9.7	0.0	0.0	0.0	0.0	0.0	19.0	0.0	2.9	0.0	0.0	0.0	100	59.0	41.0	0.0	
	2 or more countries (art 13)	10.8	0.0	2.4	3.0	10.0	1.4	0.3	0.0	8.2	0.5	1.0	0.3	0.2	1.2	3.0	0.0	0.0	26.6	0.0	26.2	0.0	0.0	0.3	0.8	1.1	2.7	0.0	0.1	0.0	100	67.2	32.7	0.1	
	Other (e.g.: art 16)	3.1	0.0	0.6	0.0	17.6	0.7	0.7	0.0	6.5	3.5	5.8	0.0	2.7	1.1	0.2	0.3	0.0	4.7	0.0	1.1	0.0	1.2	0.1	38.5	3.6	7.9	0.0	0.0	0.0	100	53.7	46.2	0.1	
	Multiple destinations	0.0	0.0	0.0	0.0	0.0	0.0	0.0	0.0	0.0	98.0	2.0	0.0	0.0	0.0	0.0	0.0	0.0	0.0	0.0	0.0	0.0	0.0	0.0	0.0	0.0	0.0	0.0	0.0	0.0	100	100.0	0.0	0.0	
	Sub-total other	7.2	0.1	3.7	2.2	9.2	1.1	0.9	0.0	6.2	11.6	1.8	0.2	0.6	1.0	5.6	0.1	0.0	18.3	0.0	16.4	0.0	0.2	0.2	8.9	1.3	3.3	0.0	0.1	0.0	100	67.5	32.4	0.1	
	Total	5.2	0.5	1.9	1.1	17.0	1.2	0.3	0.0	4.6	12.4	3.0	0.0	0.4	0.7	5.3	3.1	0.0	4.9	2.0	20.0	4.4	2.3	1.8	4.0	0.4	3.1	0.0	0.0	0.1	100	63.9	35.9	0.2	

Source: Administrative data from EU Member States, IS, LI and NO on PD A1 issued according to Council Regulation (EC) No 883/2004 on the coordination of social security system.

Note: Figures do not include PD A1 issued by SE as this country did not provide data for 2010. 'EU-14' refers to EU-15 countries minus Sweden. CH is only included as a destination country as it did not report any data on PDA1 issued for neither 2010, nor 2011.

Table 10a: PD A1 issued in 30 reporting countries by destination, 2011

Destination country	Sending country																												Total	of which from					
	BE	BG	CZ	DK	DE	EE	IE	EL	ES	FR	IT	CY	LV	LT	LU	HU	MT	NL	AT	PL	PT	RO	SI	SK	FI	SE	UK	IS		LI	NO	EU-15	EU-12	EEA-EFTA	
BE	0	1003	853	116	18149	45	268	35	1441	35295	1740	0	271	577	12645	2962	3	12901	801	20245	5639	3396	2034	3565	187	306	539	18	73	125107	90062	34954	91		
BG	43	0	63	24	2040	8	3	140	162	551	96	0		1	28	11	0	41	80	436	2	146	11	32	27	58	0	0	3	4006	3295	708	3		
CZ	296	20	0	48	5716	0	6	1	284	1998	147	0	1	1	60	341	0	54	521	1283	57	3	82	6077	13	37	95	0	3	17144	9333	7808	3		
DK	160	16	68	0	5428	16	5	1	160	1367	72	0	15	189	74	171	0	167	15	1723	37	97	84	222	44	478	96	41	156	11002	8204	2601	197		
DE	4862	2938	6076	1044	0	313	414	158	4766	21881	2948	1	1388	2060	6232	35961	19	6026	15245	125804	4770	31609	20071	12612	273	451	3237	47	27	128	311361	72307	238852	202	
EE	12	26	27	13	848	0	0	0	31	159	2	0	51	177	4	7	0	6	20	353	0	2	5	62	74	21	0	0	4	1904	1190	710	4		
IE	104	2	30	37	2244	0	0	0	326	1598	44	0		0	35	39	1	57	29	364	86	43	68	13	10	18	930	0	6	6084	5518	560	6		
EL	162	236	114	132	1124	3	11	0	410	1805	446	27	121	12	25	27	64	168	57	420	320	1431	0	43	77	300	181	0	3	44	7763	5218	2498	47	
ES	1031	141	410	307	6692	60	45	48	0	14936	2483	0	12	41	245	244	6	751	624	2345	12762	1139	151	293	395	588	1650	15	226	47640	42557	4842	241		
FR	20874	501	1571	530	19382	271	180	22	16491	0	5207	0	200	1603	17503	2293	1	2281	914	25781	18502	7570	1274	3456	116	379	14818	48	186	161954	117199	44521	234		
IT	1363	405	1050	245	15251	56	47	58	7481	15020	0	2	176	182	331	716	17	847	2185	2411	1770	6677	3578	865	86	313	2970	17	1	103	64223	47967	16135	121	
CY	26	5	28	28	352	0	0	45	91	137	20	0	17	0	4	4	0	9	1	146	4	27	0	5	5	77	0	0	11	1042	799	232	11		
LV	104	35	43	21	811	90	1	1	15	120	21	0	0	3	10	1	0	4	19	263	5	1	2	27	7	26	149	0	9	1788	1314	465	9		
LT	25	2	43	18	823	58	2	0	92	191	8	0	126	0	4	9	1	7	4	724	0	28	2	15	8	19	0	2	37	2248	1201	1008	39		
LU	5956	6	63	7	1693	2	16	2	41	3602	98	1	1	10	0	222	10	180	570	862	449	81	47	23	5	13	330	0	1	4	24295	22962	1328	5	
HU	151	31	171	36	2327	0	21	5	247	1425	181	6	1	5	71	0	1	67	671	800	0	555	705	1766	25	45	600	1	10	9924	5872	4041	11		
MT	180	1	25	41	370	0	0	0	18	364	43	0		4	16	0	0	10	6	203	0	4	0	28	12	24	95	0	5	1449	1179	265	5		
NL	15757	918	963	318	34322	460	454	14	1968	5785	1401	0	129	709	499	2980	89	0	1418	15542	7020	2765	2750	3536	73	122	2580	4	309	105885	71731	33841	313		
AT	496	134	1688	150	39064	7	8	9	365	1880	1274	0	9	8	131	8404	0	394	0	5414	1233	871	8748	4291	31	69	1618	3	26	10	76335	46722	29574	39	
PL	439	25	770	174	5552	18	332	3	1207	3032	558	0	18	80	156	458	2	126	336	0	31	199	129	1479	59	88	660	14	68	16013	12753	3178	82		
PT	281	7	135	140	1749	1	10	20	6164	3303	188	1	39	0	31	57	0	98	54	439	0	259	26	32	54	34	209	0	14	13345	12335	996	14		
RO	257	119	101	16	3249	0	14	196	114	2156	517	0	3	0	80	587	0	157	549	875	99	0	111	111	10	16	121	0	18	10476	8551	1907	18		
SI	87	4	34	6	951	0	1	0	47	433	83	0		1	13	80	0	10	355	369	0	44	0	150	4	3	0	0	1	2676	1993	682	1		
SK	91	45	1062	59	1954	0	11	0	123	946	217	0	4	1	48	468	1	38	363	912	10	123	349	0	12	1	0	0	2	6876	3873	3001	2		
FI	160	83	165	69	2118	12560	6	68	119	1037	174	0	284	375	72	71	0	44	127	2967	19	76	455	466	0	241	330	0	97	22183	4584	17502	97		
SE	226	61	262	1355	5044	500	421	9	445	2677	217	0	689	734	106	302	0	132	222	7118	157	1546	301	842	501	0	330	9	206	24412	11842	12355	215		
UK	1652	143	287	640	8058	5	540	43	3560	13226	742	0	192	101	446	653	24	960	574	2467	586	285	707	325	214	435	0	11	371	37247	31676	5189	382		
IS	6	0	0	5	332	10	0	0	15	109	0	0		6	7	0	0	3	18	32	0	0	0	0	1	4	0	0	11	559	500	48	11		
LI	8	0	0	1	575	0	0	0	0	10	0	0		0	8	2	0	0	142	10	0	0	7	0	0	0	0	0	0	763	744	19	0		
NO	120	494	0	5841	3770	819	262	0	409	1080	159	0	488	2632	30	119	0	127	368	3135	241	309	129	134	286	7504	1926	141	0	30523	22123	8259	141		
CH	1002	28	0	70	26862	20	28	10	887	8133	16525	0	52	3	471	659	79	321	2418	1487	244	77	659	420	59	101	1904	6	5	48	62578	59035	3484	59	
Sub-total postings	55931	7429	16102	11491	226850	15322	3106	888	48479	144256	35611	38	4287	9515	39385	57848	318	25986	28806	227930	54043	59363	42485	40926	2668	11771	35368	377	63	2163	1208805	724639	481563	2603	
of which	EU-15	53084	6594	13735	5090	170318	14299	2425	487	43737	123412	17034	32	3526	6601	38375	55102	234	25006	22935	216902	53350	57845	40294	30584	2066	3747	29818	213	58	1933	1038836	590884	445748	2204
	EU-12	1711	313	2367	484	24993	174	391	391	3431	11512	1893	6	221	273	494	1966	5	529	2925	6364	208	1132	1396	9788	256	415	1720	17	0	171	75546	51353	24005	188
	EFTA	1136	522	0	5917	31539	849	290	10	1311	9332	16684	0	540	2641	516	780	79	451	2946	4664	485	386	795	554	346	7609	3830	147	5	59	94423	82402	11810	211
Int. Transport (art 13)		0	960	1300	3	289	632	4		911	0	0	123	14	6209	108	2	1247	0	0	4	0	0	6009	0	0	1034	0	0	1849	11344	7505	0		
2 or more countries (art 13)		19857	4770	5336	21631	3159	1036	7	17776	5540	1813	1497	523	1457	4206	66	2	44788	0	81770	31	0	66	561	1911	0	6054	15	125	0	223997	129986	93871	140	
Other (e.g.: art 16)		1687	190		7471	189	209	0	2609	1575	2255	0	1224	469	81	60	6	2950	0	0	105	710	17	972	1815	0	3331	5	14	0	27944	24088	3837	19	
Multiple destinations										27654	82																			27736	27736	0	0		
Sub-total other		21544	383	5920	6636	29105	3637	1877	11	20385	35680	4150	1497	1870	1940	10496	234	10	48985	0	81770	140	710	83	7542	3726	0	10419	20	139	0	298909	193154	105596	159
Total		77475	7812	22022	18127	255955	18959	4983	899	68864	179936	39761	1535	6157	11455	49881	58082	328	74971	28806	309700	54183	60073	42568	48468	6394	11771	45787	397	202	2163	1507714	917793	587159	2762

Source: Administrative data from EU Member States, IS, LI and NO on PD A1 issued according to Council Regulation (EC) No 883/2004 on the coordination of social security system.

Note: CH is only included as a destination country as it did not report any data on PDA1 issued for neither 2010, nor 2011.

Table 10c: PD A1 issued in 30 reporting countries by destination, 2011 (row %)

Destination country	Sending country																										Total	of which from								
	BE	BG	CZ	DK	DE	EE	IE	EL	ES	FR	IT	CY	LV	LT	LU	HU	MT	NL	AT	PL	PT	RO	SI	SK	FI	SE		UK	IS	LI	NO	EU-15	EU-12	EEA-EFTA		
BE	0.0	0.8	0.7	0.1	14.5	0.0	0.2	0.0	1.2	28.2	1.4	0.0	0.2	0.5	10.1	2.4	0.0	10.3	0.6	16.2	4.5	2.7	1.6	2.8	0.1	0.2	0.4	0.0	0.0	0.1	100	72.0	27.9	0.1		
BG	1.1	0.0	1.6	0.6	50.9	0.2	0.1	3.5	4.0	13.8	2.4	0.0	0.0	0.0	0.7	0.3	0.0	1.0	2.0	10.9	0.0	3.6	0.3	0.8	0.7	1.4	0.0	0.0	0.0	0.1	100	82.3	17.7	0.1		
CZ	1.7	0.1	0.0	0.3	33.3	0.0	0.0	0.0	1.7	11.7	0.9	0.0	0.0	0.0	0.3	2.0	0.0	0.3	3.0	7.5	0.3	0.0	0.5	35.4	0.1	0.2	0.6	0.0	0.0	0.0	100	54.4	45.5	0.0		
DK	1.5	0.1	0.6	0.0	49.3	0.1	0.0	0.0	1.5	12.4	0.7	0.0	0.1	1.7	0.7	1.6	0.0	1.5	1.0	15.7	0.3	0.9	0.8	2.0	0.4	4.3	0.9	0.4	0.0	1.4	100	74.6	23.6	1.8		
DE	1.6	0.9	2.0	0.3	0.0	0.1	0.1	0.1	1.5	7.0	0.9	0.0	0.4	0.7	2.0	11.5	0.0	1.9	4.9	40.4	1.5	10.2	6.4	4.1	0.1	0.1	1.0	0.0	0.0	0.0	100	23.2	76.7	0.1		
EE	0.6	1.4	1.4	0.7	44.5	0.0	0.0	0.0	1.6	8.4	0.1	0.0	2.7	9.3	0.2	0.4	0.0	0.3	1.1	18.5	0.0	0.1	0.3	3.3	3.9	1.1	0.0	0.0	0.0	0.2	100	62.5	37.3	0.2		
IE	1.7	0.0	0.5	0.6	36.9	0.0	0.0	0.0	5.4	26.3	0.7	0.0	0.0	0.0	0.6	0.6	0.0	0.9	0.5	6.0	1.4	0.7	1.1	0.2	0.2	0.3	15.3	0.0	0.0	0.1	100	90.7	9.2	0.1		
EL	2.1	3.0	1.5	1.7	14.5	0.0	0.1	0.0	5.3	23.3	5.7	0.3	1.6	0.2	0.3	0.3	0.8	2.2	0.7	5.4	4.1	18.4	0.0	0.6	1.0	3.9	2.3	0.0	0.0	0.6	100	67.2	32.2	0.6		
ES	2.2	0.3	0.9	0.6	14.0	0.0	0.1	0.1	0.1	0.0	3.14	5.2	0.0	0.0	0.1	0.5	0.5	0.0	1.6	1.3	4.9	26.8	2.4	0.3	0.6	0.8	1.2	3.5	0.0	0.0	0.5	100	89.3	10.2	0.5	
FR	12.9	0.3	1.0	0.3	12.0	0.2	0.1	0.0	10.2	0.0	3.2	0.0	0.1	1.0	10.8	1.4	0.0	1.4	0.6	15.9	11.4	4.7	0.8	2.1	0.1	0.2	9.1	0.0	0.0	0.1	100	72.4	27.5	0.1		
IT	2.1	0.6	1.6	0.4	23.7	0.1	0.1	0.1	11.6	23.4	0.0	0.0	0.3	0.3	0.5	1.1	0.0	1.3	3.4	3.8	2.8	10.4	5.6	1.3	0.1	0.5	4.6	0.0	0.0	0.2	100	74.7	25.1	0.2		
CY	2.5	0.5	2.7	2.7	33.8	0.0	0.0	4.3	8.7	13.1	1.9	0.0	1.6	0.0	0.4	0.4	0.0	0.9	0.1	14.0	0.4	2.6	0.0	0.5	0.5	7.4	0.0	0.0	0.0	1.1	100	76.7	22.3	1.1		
LV	5.8	2.0	2.4	1.2	45.4	5.0	0.1	0.1	0.8	6.7	1.2	0.0	0.0	0.2	0.6	0.1	0.0	0.2	1.1	14.7	0.3	0.1	0.1	1.5	0.4	1.5	8.3	0.0	0.0	0.5	100	73.5	26.0	0.5		
LT	1.1	0.1	1.9	0.8	36.6	2.6	0.1	0.0	4.1	8.5	0.4	0.0	5.6	0.0	0.2	0.4	0.0	0.3	0.2	32.2	0.0	1.2	0.1	0.7	0.4	0.8	0.0	0.1	0.0	1.6	100	53.4	44.8	1.7		
LU	24.5	0.0	0.3	0.0	48.1	0.0	0.1	0.0	0.2	14.8	0.4	0.0	0.0	0.0	0.0	0.9	0.0	0.7	2.3	3.5	1.8	0.3	0.2	0.1	0.0	0.1	1.4	0.0	0.0	0.0	100	94.5	5.5	0.0		
HU	1.5	0.3	1.7	0.4	23.4	0.0	0.2	0.1	2.5	14.4	1.8	0.1	0.0	0.1	0.7	0.0	0.0	0.7	6.8	8.1	0.0	5.6	7.1	17.8	0.3	0.5	6.0	0.0	0.0	0.1	100	59.2	40.7	0.1		
MT	12.4	0.1	1.7	2.8	25.5	0.0	0.0	0.0	1.2	25.1	3.0	0.0	0.0	0.3	1.1	0.0	0.0	0.7	0.4	14.0	0.0	0.3	0.0	1.9	0.8	1.7	6.6	0.0	0.0	0.3	100	81.4	18.3	0.3		
NL	14.9	0.9	0.9	0.3	32.4	0.4	0.4	0.0	1.9	5.5	1.3	0.0	0.1	0.7	0.5	2.8	0.1	0.0	1.3	17.5	6.6	2.6	2.6	3.3	0.1	0.1	2.4	0.0	0.0	0.3	100	67.7	32.0	0.3		
AT	0.6	0.2	2.2	0.2	51.2	0.0	0.0	0.0	0.5	2.5	1.7	0.0	0.0	0.0	0.2	1.0	0.0	0.5	0.0	7.1	1.6	1.1	11.5	5.6	0.0	0.1	2.1	0.0	0.0	0.0	100	61.2	38.7	0.1		
PL	2.7	0.2	4.8	1.1	34.7	0.0	2.1	0.0	7.5	18.9	3.5	0.0	0.1	0.5	1.0	2.9	0.0	0.8	2.1	0.0	0.2	1.2	0.8	9.2	0.4	0.5	4.1	0.1	0.0	0.4	100	79.6	19.8	0.5		
PT	2.1	0.1	1.0	1.0	13.1	0.0	0.1	0.1	46.2	24.8	1.4	0.0	0.3	0.0	0.2	0.4	0.0	0.7	0.4	3.3	0.0	1.9	0.2	0.2	0.4	0.3	1.6	0.0	0.0	0.1	100	92.4	7.5	0.1		
RO	2.5	1.1	1.0	0.2	31.0	0.0	0.1	1.9	10.6	20.6	4.9	0.0	0.0	0.0	0.8	5.6	0.0	1.5	5.2	8.4	0.9	0.0	1.1	1.1	0.1	0.2	1.2	0.0	0.0	0.2	100	81.6	18.2	0.2		
SI	3.3	0.1	1.3	0.2	35.5	0.0	0.0	0.0	1.8	16.2	3.1	0.0	0.0	0.0	0.5	3.0	0.0	0.4	13.3	13.8	0.0	1.6	0.0	5.6	0.1	0.1	0.0	0.0	0.0	0.0	100	74.5	25.5	0.0		
SK	1.3	0.7	15.4	0.9	28.4	0.0	0.2	0.0	1.8	13.8	3.2	0.0	0.1	0.0	0.7	6.8	0.0	0.6	5.3	13.3	0.1	1.8	5.1	0.0	0.2	0.0	0.0	0.0	0.0	0.0	100	56.3	43.6	0.0		
FI	0.7	0.4	0.7	0.3	9.5	56.6	0.0	0.3	0.5	4.7	0.8	0.0	1.3	1.7	0.3	0.3	0.0	0.2	0.6	13.4	0.1	0.3	2.1	2.1	0.0	1.1	1.5	0.0	0.0	0.4	100	20.7	78.9	0.4		
SE	0.9	0.2	1.1	5.6	20.7	2.0	1.7	0.0	1.8	11.0	0.9	0.0	2.8	3.0	0.4	1.2	0.0	0.5	0.9	29.2	0.6	6.3	1.2	3.4	2.1	0.0	1.4	0.0	0.0	0.8	100	48.5	50.6	0.9		
UK	4.4	0.4	0.8	1.7	21.6	0.0	1.4	0.1	9.6	35.5	2.0	0.0	0.5	0.3	1.2	1.8	0.1	2.6	1.5	6.6	1.6	0.8	1.9	0.9	0.6	1.2	0.0	0.0	0.0	1.0	100	85.0	13.9	1.0		
IS	1.1	0.0	0.0	0.9	59.4	1.8	0.0	0.0	2.7	19.5	0.0	0.0	0.0	1.1	1.3	0.0	0.0	0.5	3.2	5.7	0.0	0.0	0.0	0.0	0.2	0.7	0.0	0.0	0.0	2.0	100	89.4	8.6	2.0		
LI	1.0	0.0	0.0	0.1	75.4	0.0	0.0	0.0	0.0	1.3	0.0	0.0	0.0	0.0	1.0	0.3	0.0	0.0	18.6	1.3	0.0	0.0	0.9	0.0	0.0	0.0	0.0	0.0	0.0	0.0	100	97.5	2.5	0.0		
NO	0.4	1.6	0.0	19.1	12.4	2.7	0.9	0.0	1.3	3.5	0.5	0.0	1.6	8.6	0.1	0.4	0.0	0.4	1.2	10.3	0.8	1.0	0.4	0.4	0.9	24.6	6.3	0.5	0.0	0.0	100	72.5	27.1	0.5		
CH	1.6	0.0	0.0	0.1	42.9	0.0	0.0	0.0	1.4	13.0	26.4	0.0	0.1	0.0	0.8	1.1	0.1	0.5	3.9	2.4	0.4	0.1	1.1	0.7	0.1	0.2	3.0	0.0	0.0	0.1	100	94.3	5.6	0.1		
Sub-total postings	4.6	0.6	1.3	1.0	18.8	1.3	0.3	0.1	4.0	11.9	2.9	0.0	0.4	0.8	3.3	4.8	0.0	2.1	2.4	18.9	4.5	4.9	3.5	3.4	0.2	1.0	2.9	0.0	0.0	0.2	100	59.9	39.8	0.2		
of which																																				
EU-15	5.1	0.6	1.3	0.5	16.4	1.4	0.2	0.0	4.2	11.9	1.6	0.0	0.3	0.6	3.7	5.3	0.0	2.4	2.2	20.9	5.1	5.6	3.9	2.9	0.2	0.4	2.9	0.0	0.0	0.2	100	56.9	42.9	0.2		
EU-12	2.3	0.4	3.1	0.6	33.1	0.2	0.5	0.5	4.5	15.2	2.5	0.0	0.3	0.4	0.7	2.6	0.0	0.7	3.9	8.4	0.3	1.5	1.8	13.0	0.3	0.5	2.3	0.0	0.0	0.2	100	68.0	31.8	0.2		
EFTA	1.2	0.6	0.0	6.3	33.4	0.9	0.3	0.0	1.4	9.9	17.7	0.0	0.6	2.8	0.5	0.8	0.1	0.5	3.1	4.9	0.5	0.4	0.8	0.6	0.4	8.1	4.1	0.2	0.0	0.1	100	87.3	12.5	0.2		
Int. Transport (art 13)	0.0	0.0	5.1	6.9	0.0	1.5	3.4	0.0	0.0	4.8	0.0	0.0	0.7	0.1	32.9	0.6	0.0	6.6	0.0	0.0	0.0	0.0	0.0	31.9	0.0	0.0	5.5	0.0	0.0	0.0	100	60.2	39.8	0.0		
2 or more countries (art 13)	8.9	0.0	2.1	2.4	9.7	1.4	0.5	0.0	7.9	2.5	0.8	0.7	0.2	0.7	1.9	0.0	0.0	20.0	0.0	36.5	0.0	0.0	0.0	0.3	0.9	0.0	2.7	0.0	0.1	0.0	100	58.0	41.9	0.1		
Other (e.g.: art 16)	6.0	0.0	0.7	0.0	26.7	0.7	0.7	0.0	9.3	5.6	8.1	0.0	4.4	1.7	0.3	0.2	0.0	10.6	0.0	0.0	0.4	2.5	0.1	3.5	6.5	0.0	11.9	0.0	0.1	0.0	100	86.2	13.7	0.1		
Multiple destinations	0.0	0.0	0.0	0.0	0.0	0.0	0.0	0.0	0.0	99.7	0.3	0.0	0.0	0.0	0.0	0.0	0.0	0.0	0.0	0.0	0.0	0.0	0.0	0.0	0.0	0.0	0.0	0.0	0.0	0.0	100	100.0	0.0	0.0		
Sub-total other	7.2	0.1	2.0	2.2	9.7	1.2	0.6	0.0	6.8	11.9	1.4	0.5	0.6	0.6	3.5	0.1	0.0	16.4	0.0	27.4	0.0	0.2	0.0	2.5	1.2	0.0	3.5	0.0	0.0	0.0	100	64.6	35.3	0.1		
Total	5.1	0.5	1.5	1.2	17.0	1.3	0.3	0.1	4.6	11.9	2.6	0.1	0.4	0.8	3.3	3.9	0.0	5.0	1.9	20.5	3.6	4.0	2.8	3.2	0.4	0.8	3.0	0.0	0.0	0.1	100	60.9	38.9	0		

ANNEX 2: DATA COLLECTION QUESTIONNAIRE 2010 AND 2011

Reporting Country:

Reporting Institution:

Year/ reference Period:

Notes concerning reference period, type of data, exact sources and other

Number of PD A1 and E101 forms issued by sector of economic activity according to Regulation (EC) No 883/2004:

	Total	Sectors of economic activity								
		Agriculture, hunting and fishing NACE A	Industry NACE B to F		Services Total	Services NACE G to T				
			Industry Total	of which Construction NACE F		Wholesale and retail trade NACE G	Accommodation and food service activities NACE I	Transportation and storage, information and communication NACE H and J	Financial and insurance, Real estate, Professional, scientific and technical activities, Administrative and support service activities NACE K, L, M and N	Education, health and social work, arts and other services NACE P, Q, R and S
Receiving country (single destination only)										
Posting according to Art. 12 of Regulation (EC) No 883/2004	Belgium	0								
	Bulgaria	0								
	Czech Republic	0								
	Denmark	0								
	Germany	0								
	Estonia	0								
	Greece	0								
	Spain	0								
	France	0								
	Ireland	0								
	Italy	0								
	Cyprus	0								
	Latvia	0								
	Lithuania	0								
	Luxembourg	0								
	Hungary	0								
	Malta	0								
	Netherlands	0								
	Austria	0								
	Poland	0								
	Portugal	0								
	Romania	0								
	Slovenia	0								
	Slovak Republic	0								
	Finland	0								
	Sweden	0								
United Kingdom	0									
Iceland	0									
Liechtenstein	0									
Norway	0									
Switzerland	0									
Sub-total postings	0	0	0	0	0	0	0	0	0	
International transport according to Art. 13	0									
Active in 2 or more Member States according to Art. 13	0									
Other - e.g. Art. 16 agreement	0									
Sub-total other	0	0	0	0	0	0	0	0	0	
Total	0	0	0	0	0	0	0	0	0	