



## **Youth neither in employment nor education and training (NEET)**

### **Presentation of data for the 27 Member States**

*On the basis of discussions and a proposal by its Indicators Group, the Employment Committee (EMCO) agreed in April 2010 on a definition for youth neither in employment nor in education and training (NEET) for use in the context of the Europe 2020 Employment Guidelines.*

*This note aims to present overall NEET figures and breakdowns by age, gender, labour market status and educational attainment for the 27 Member States and according to the agreed definitions. The figures stem from the European labour force survey as provided by Eurostat.*

## **1 Background and definitions**

The labour market situation of young people is usually described through indicators such as the employment rate and unemployment rates or ratios which provide information about the relative situation of young people who already have a job or are actively looking for one. However, these traditional indicators for youth labour market participation are frequently criticized for their limited relevance, given the high number of youth who are not in the labour force because they are still in school, training or university. Moreover, indicators on youth employment and unemployment do not cover those youth who are neither active nor in education.

As consequence of the shortcomings of traditional youth labour market indicators, a number of studies and reports from academia, national authorities and international organisations have been using additional indicators on youth who are disengaged from both work and education and are arguably at a high risk of labour market and social exclusion. While statistical definitions and terminology tend to differ between sources, a frequently used term for this specific category of jobless youth not in education is youth neither in employment nor education and training, i.e. NEET.

NEET have also caught the attention of policy makers in the EU as a useful indicator for monitoring the labour market and social situation of youth in the context of the EU's new Europe 2020 growth strategy and its corresponding Employment Guidelines.

Against this background, EMCO and its Indicators Group together with Eurostat investigated and discussed the issue of a NEET indicator for use in the European Employment Strategy.<sup>1</sup> Eventually, EMCO at its meeting on 19 May 2010 and based on a

---

<sup>1</sup> See Commission discussion notes "Indicators for young persons at risk of labour market exclusion" docs. INDIC/02/260110/EN and INDIC/11/210410/EN.

proposal by the Indicators Group<sup>2</sup> agreed on the following definition of NEET and corresponding breakdowns for use in the context of the Europe 2020 Employment Guidelines:

NEET are defined as youth "neither in employment nor in any education nor training".

This definition of NEET includes:

- Unemployed persons (according to ILO definition) not in any education and training;
- Inactive persons (ILO definition) not in any education and training.

In other words, "not employed" includes both unemployed and inactive, with "not in any education or training" meaning that persons that are employed and/or follow formal or non-formal education are not considered to be NEET.

The main NEET indicator covers the age group 15-24. For analytical purposes the indicator is broken down by sex and available for different age groups (15-17 / 15-19 / 15 – 24/ 15 – 34 / 18 – 24 / 20-24 / 20 – 34 / 25-29). Breakdowns by labour market status (unemployed, inactive) and education level (at most lower secondary attainment/at least upper secondary attainment) are also available (with breakdowns by educational attainment to be used from age 18 as teens aged 15-17 are typically below the age by which upper secondary education can be reached).

The NEET indicator is calculated by using data from the European Labour Force Survey under observation of established rules for statistical quality and reliability. The data are available at Eurostat's publicly accessible online database (see: [http://epp.eurostat.ec.europa.eu/portal/page/portal/statistics/search\\_database](http://epp.eurostat.ec.europa.eu/portal/page/portal/statistics/search_database)) under the domain "*Population and social conditions/Education and training/Educational attainment, outcomes and returns of education/Transition from education to work, early leavers from education and training*"

---

<sup>2</sup> See doc. EMCO/31/190510/EN.

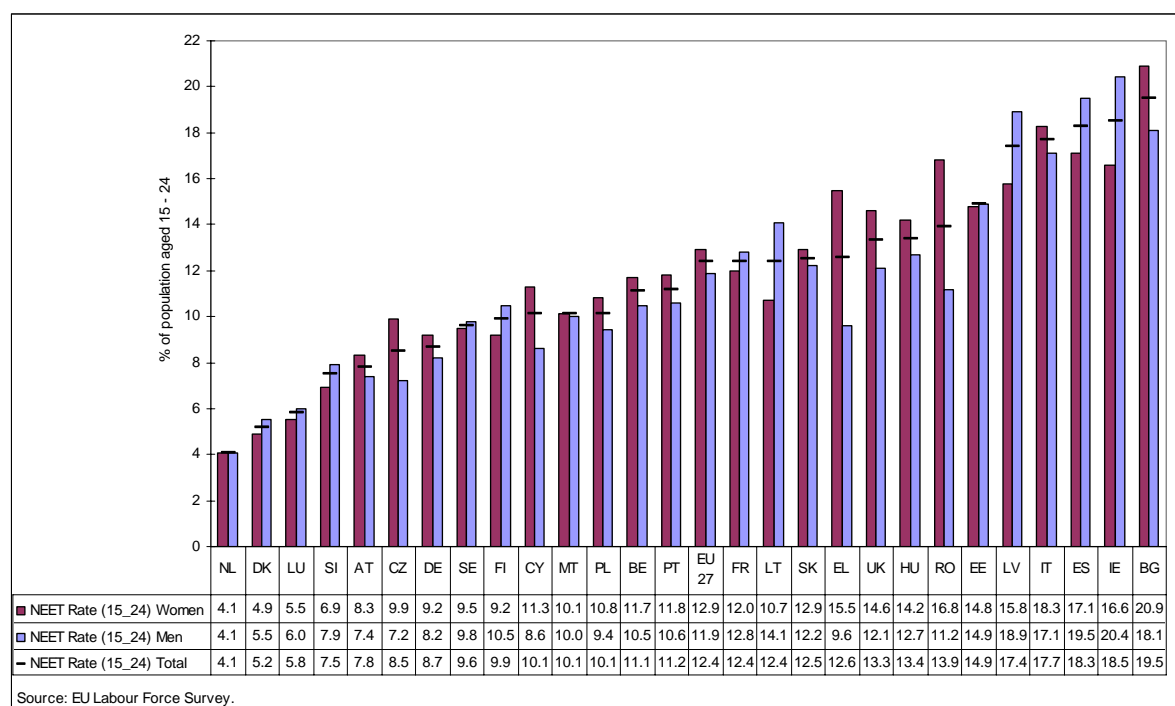
## 2 NEET-rates and main breakdowns in EU Member States 2009

The overall NEET-rate for youth aged 15-24 at the EU level was 12.4% in 2009 (Chart 1), with considerable variation between Member States. In seven Member States (NL, DK, LU, SI, AT, CZ and DE) the NEET-rate was under 9% and in five Member States (BG, IE, ES, IT and LV) it was over 17%.

The average NEET-rate for women is somewhat higher than for men, with the EU-level, female NEET-rate (15-24) at 12.9% in 2009, compared to 11.9% for male youth. Chart 1 shows overall NEET rates by gender for the age group 15 to 24 in all Member States. There are a couple of exceptions, but generally the highest NEET-rates for women can be found in the same Member States that also show the highest rates for men. Likewise, the lowest NEET-rates for women are encountered in the same Member States as the lowest rates for men.

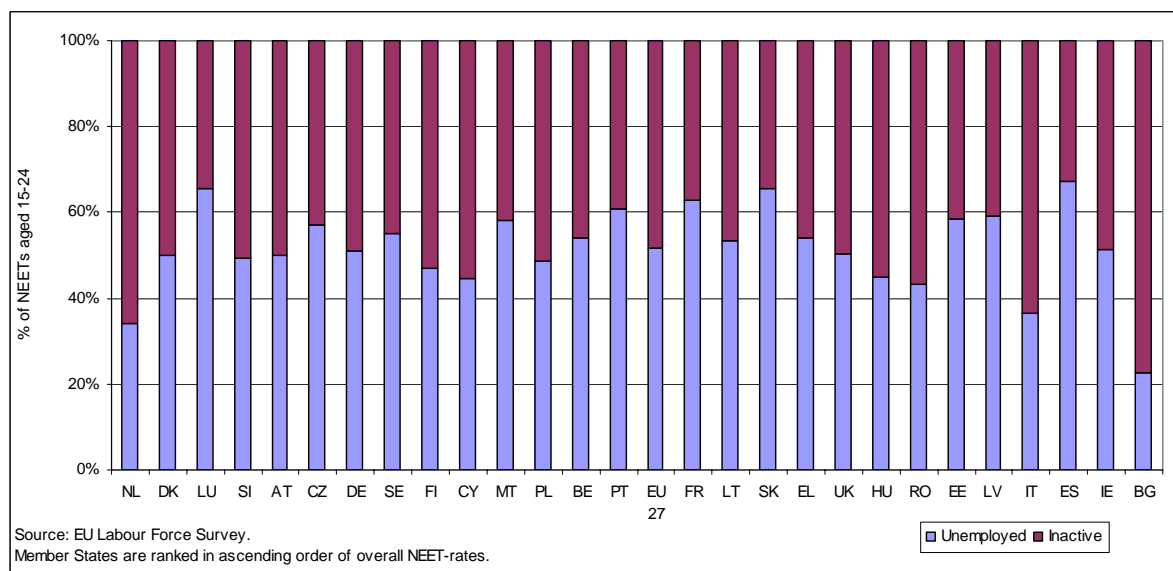
In 2009, almost in half of the Member States NEET-rates for young men were higher than NEET-rates for young women. However, in earlier years, in almost all Member States young women were more likely to be NEET than young men (see Annex 1).

**Chart 1: NEET-rates (15-24) by gender, 2009**



In 2009 at the EU 27 level, a little over half of all NEETs (15-24) were unemployed, with the remainder inactive (Chart 2). Also in most of the Member States, a higher proportion of youth in NEET status were reported as unemployed in 2009. However, in earlier years, a higher proportion of youth in NEET status were reported as inactive rather than unemployed in most of the Member States (see Annex 3).

**Chart 2: NEET aged 15-24 by labour market status, 2009**



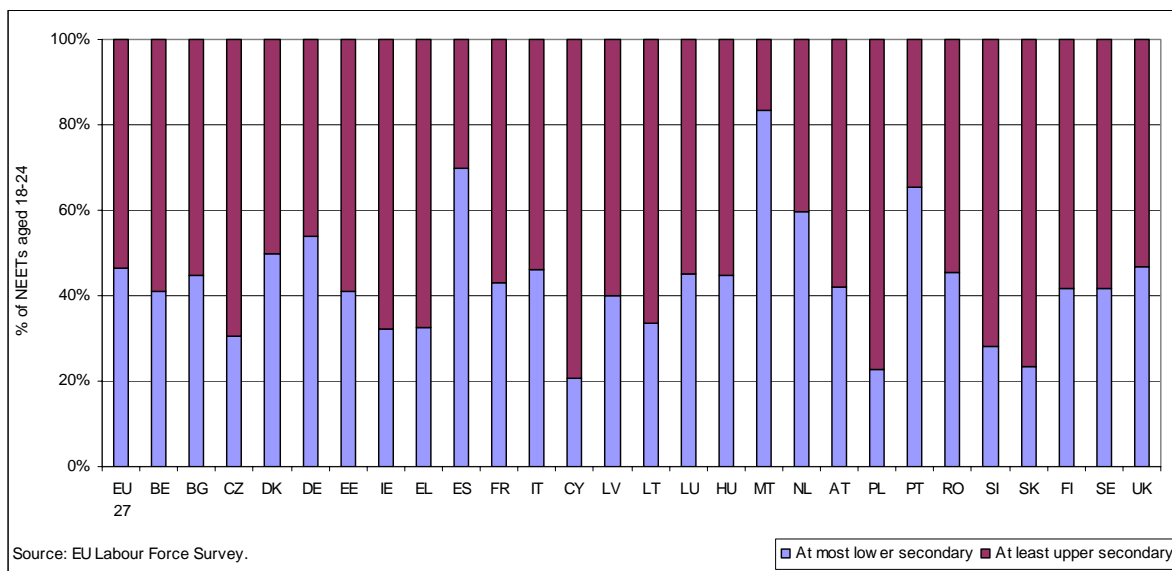
Concerning breakdown by educational attainment, in 2009 at the EU 27 level, little over half of young people aged 18-24 were NEET with at least upper secondary educational attainment (Chart 3). Also in most of the Member States, the share of NEET with at least upper secondary education was bigger than the share of NEET with at most lower secondary education. The situation was the same also in earlier years (see Annex 4).

For the breakdown by educational attainment, the age group 18-24 has been chosen, as teens aged 15-17 are typically below the age by which upper secondary education can be reached. The 18-24 age group also makes the information about NEET by educational attainment coherent with the Europe 2020 headline indicator 'early leavers from education and training' which is defined for the same age bracket.

As shown in chart 3 and annex 4, in some countries the shares by education are very different from the EU average. NEET reflects both the education system (and the potential of transition from it) as well as labour market conditions for young people and the combination of these factors can vary considerably between Member States. For example, in some countries, reasons for "difficult" transitions may be more structural, while in other countries they may have more to do with the economic cycle and (current) labour market situation. In some countries, it can also be a very low female labour-market participation that explains patterns of overall NEET-rates and their distribution by educational attainment.<sup>3</sup>

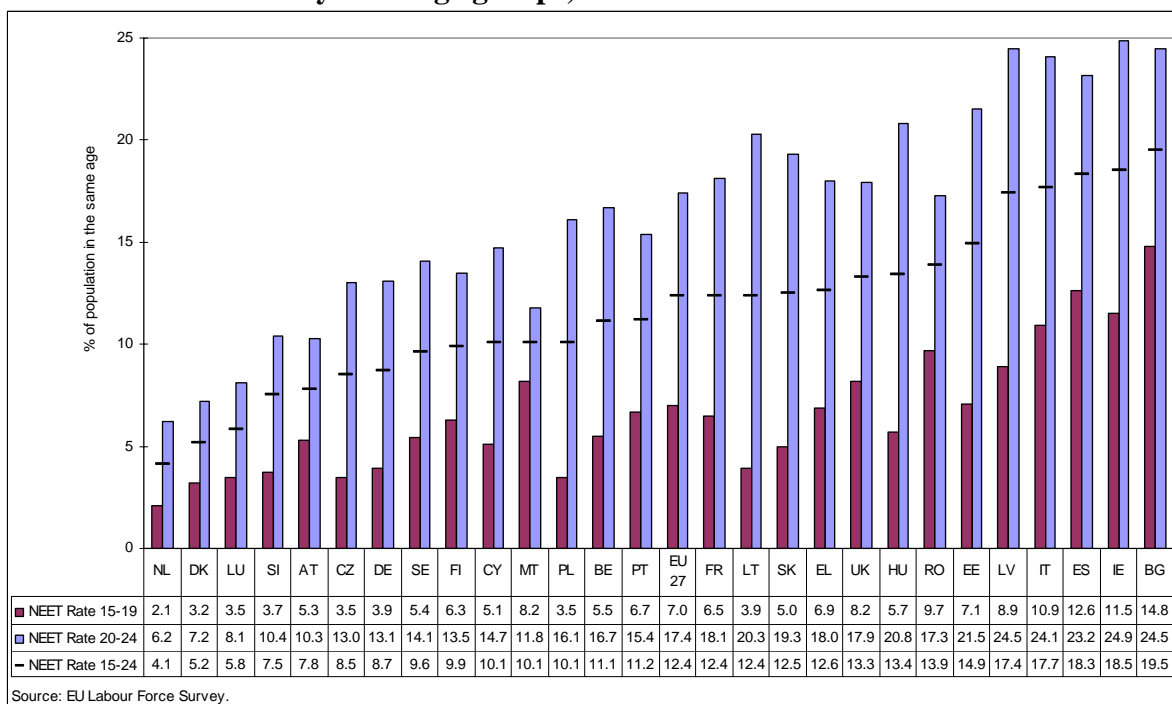
<sup>3</sup> Later this year and next year Eurostat is planning to do analysis based on the LFS 2009 ad hoc module on "the entry of young people into the labour market", which will look in more detail at school to work-transitions and NEET incidence.

**Chart 3: NEET aged 18-24 by educational attainment, 2009**



Generally, the same Member States had high (and low) NEET rates in all age groups (15-24, 15-19 and 20-24).

**Chart 4: NEET-rates by main age groups, 2009**

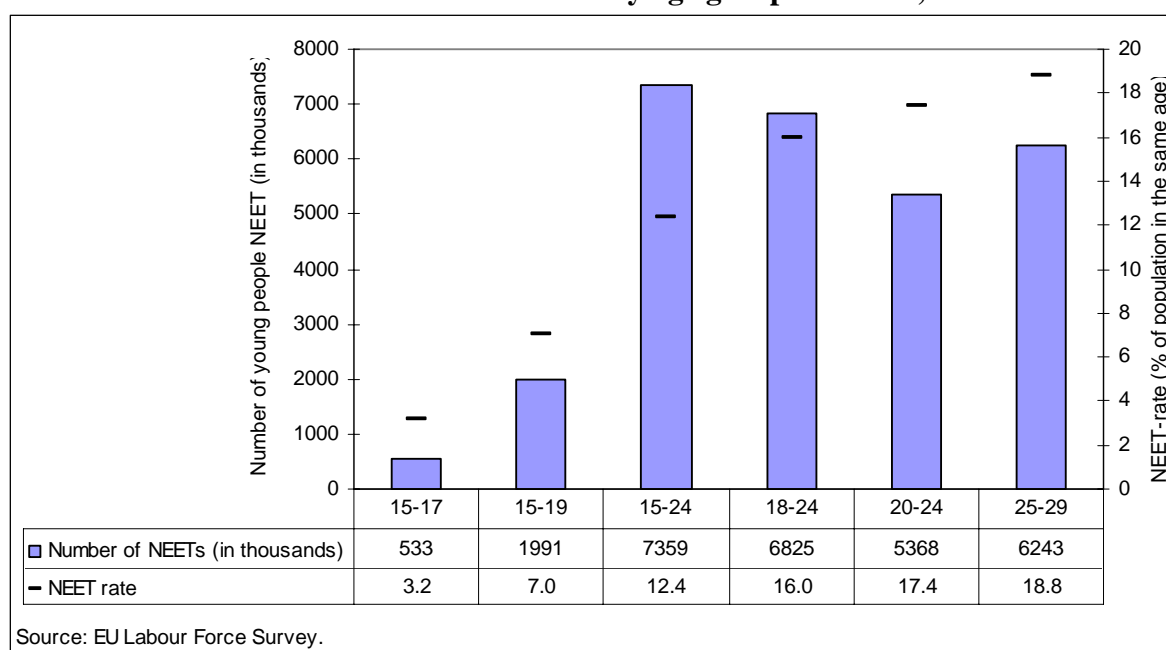


### 3 Further breakdowns by age, gender, labour market status and education

NEET-rates for the age group 15 to 24 can mask substantial differences for different sub-groups within that age-bracket. In the youngest age groups, NEET-rates tend to be quite low, but increase sharply with age of 18 (chart 5). An average of 16% of young people between the age of 18 and 24 were NEET in 2009. By comparison, the NEET-rate for the age group of 15-17 was 3.2.

In absolute terms, there were almost 7.4 million youth NEET aged 15-24, and around 6.8 million in the age group 18 to 24. Chart 5 below presents also the distribution of this group according to the age subgroups expressed in thousands of persons.

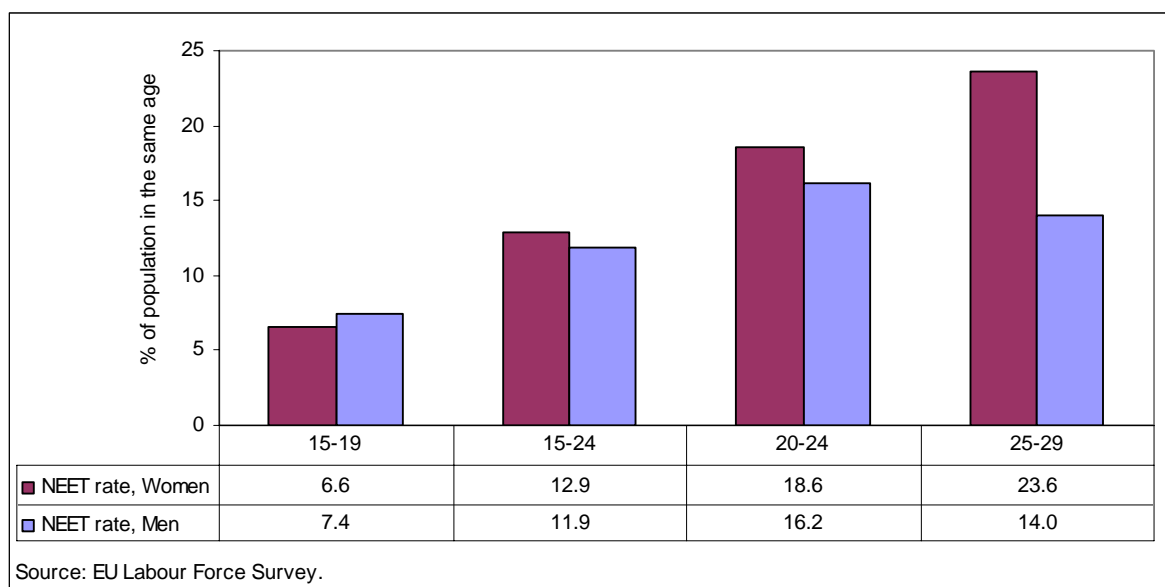
**Chart 5: Number of NEET and NEET-rates by age group in EU-27, 2009**



The distribution of youth NEET-rates by gender also changes along the age profile. Female teenagers aged 15 to 19 tend to have lower NEET-rates than their male counterparts. However, in the age group 20 to 24 and especially in the age group 25 to 29 young women are more likely to be NEET than men, mostly due to personal or family responsibilities

There is a range of reasons why young people become NEET. For example, NEET can include early school leavers from education and training that do not find a job, young women taking care of children, recently graduated people taking time off before taking up employment or young people who are unemployed between contracts.

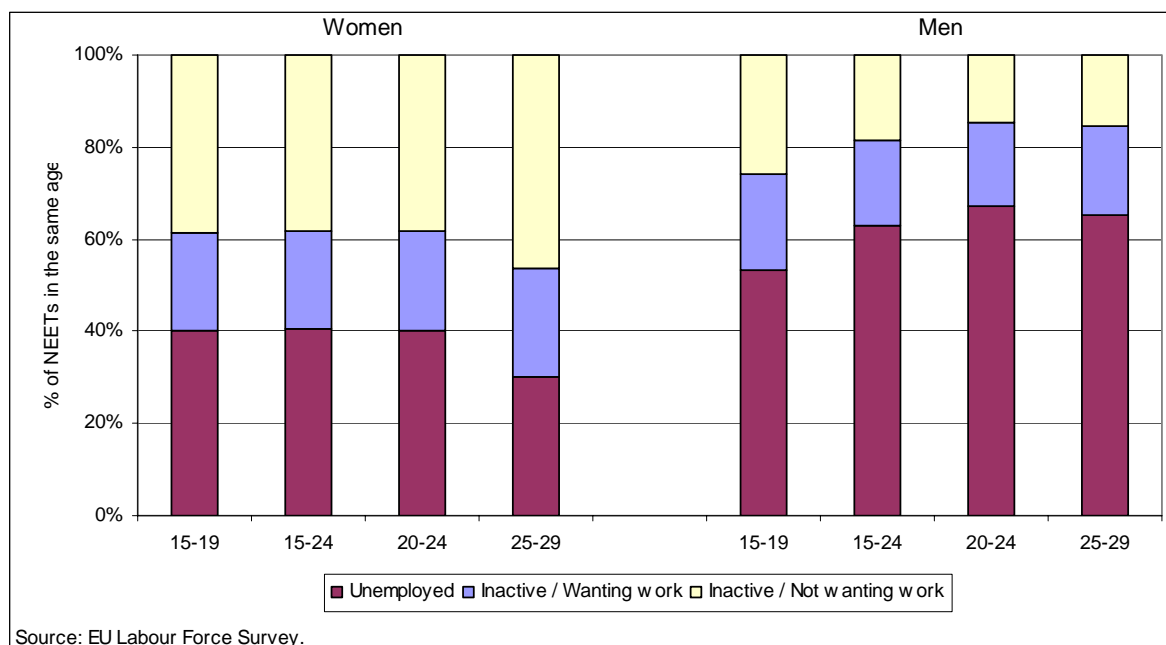
**Chart 6: NEET-rates by gender and age group in EU-27, 2009**



In all the age groups, about one half of average NEET were unemployed and the other half inactive in 2009. However, the shares were very different for women and men. In the age group of 15 to 24, about 60% of women with NEET status were inactive (Chart 2). In the same age group, two thirds of men with NEET status were unemployed. For young women, the distinction between NEET unemployed and NEET inactive was the same both in age group of 15-19 and 20-24. However, in the age group of 25-29 the share of inactive was much higher than for younger NEETs. For men, the share of unemployed was highest in the age group of 20-24 and lowest in the age group of 15-19.

It is also possible to make a distinction between NEET inactive wanting to work, but not unemployed according to the strict definition of the ILO (i.e. labour reserve) and not wanting to work (i.e. inactive and not labour reserve). Both for women and for men, the share of inactive and wanting work was almost the same in all age groups. For women, the share of inactive and not wanting work was biggest amongst the 25 to 29 years old, and for men amongst teenagers (15-19).

**Chart 7: NEET by labour market status, age group and gender in EU-27, 2009**



As regards breakdown by educational attainment, 53% of NEET in the age group of 18-24 had at least upper secondary education in 2009. In the age group of 25-29, that share was 62%.

## 4 Development of NEET-rates between 2000-2009

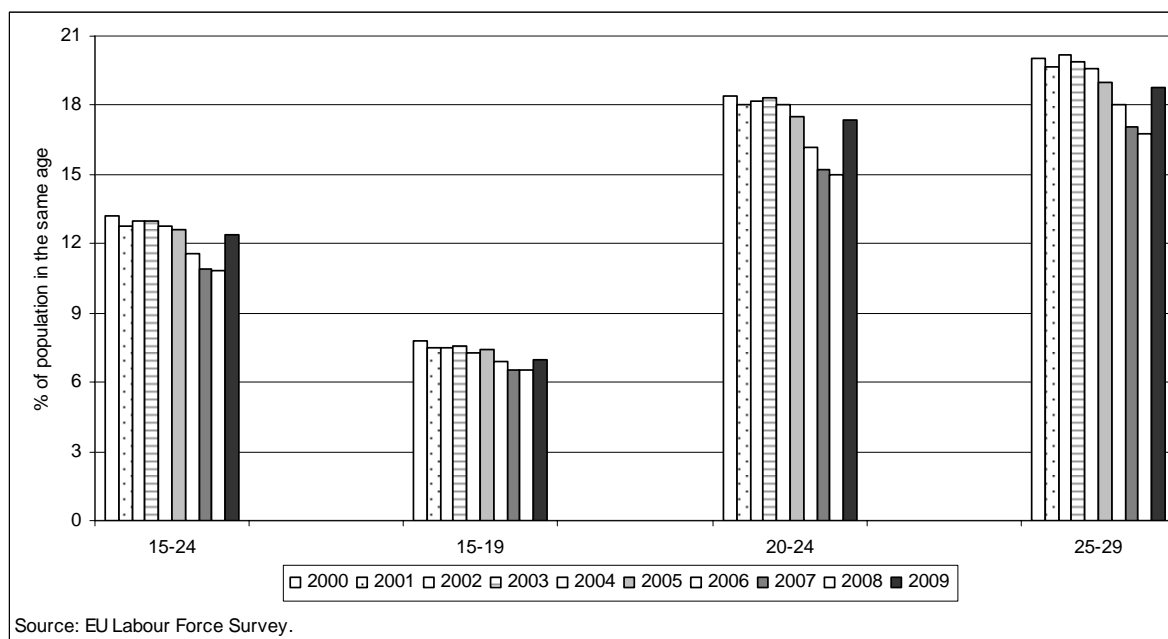
On the whole, both the number of young people NEET and NEET-rates declined from 2000 to 2008. This development could be observed same in all age groups and same for women and men.

However, in 2009, NEETs increased both in terms of rates and the numbers. From 2008 to 2009, overall NEET-rates (15-24) increased in all Member States except LU and MT. In five Member States (EE, LV, ES, IE and LT), NEET rates (15-24) increased more than three percentage points. These five Member States also had the biggest increase in youth unemployment rates in EU 2008-2009.

The increases have been strongest in the age groups of 20-24 and 25-29, and more so for men. Also the distribution according to labour market status changed in 2009, with the share of unemployed NEET increasing vis-à-vis the share of inactive NEET. The share of NEET unemployed increased more in the older age groups (20 to 24 and 25 to 29) than in the younger age group (15 to 19), and more for men than women. The recent increase in NEET figures are mostly a result of the economic crisis which lead to a sharp increase in youth unemployment, in particular for young men, and made it harder for young people to make the transition form school into work.

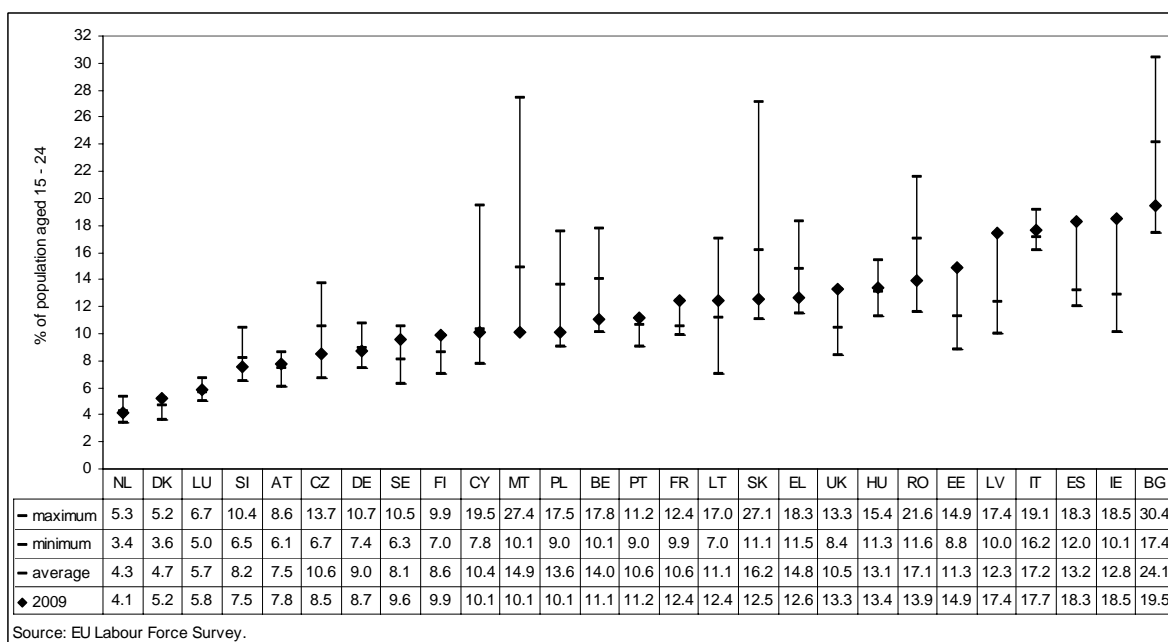


**Chart 8: NEET-rates by main age groups in EU-27, 2000-2009**



Although NEET rates vary considerably between Member States, they do not tend to fluctuate strongly over time. Between 2000 and 2009, in half of the Member States, the NEET-rates have varied by less than five percentage points (chart 9). There are some Member States that have had big changes, but in many cases this is mainly due to increased youth unemployment in the wake of the crisis (in some cases also due to measurement problems).

**Chart 9: The highest and lowest NEET-rates (15-24) in EU Member States between 2000 and 2009**



The results are not totally representative in some Member States (EE, LT, LU, MT, SI and in some breakdowns also DK and CY). The situation has been the same in most of the years.

The populations are rather small in certain countries and cases which imply reliability issues when using the LFS. The group of NEET is small, so the sample is not big enough to capture them correctly.

## Annex 1: NEET-rates (15-24) by gender 2000-2009

	Total										Women										Men									
	2000	2001	2002	2003	2004	2005	2006	2007	2008	2009	2000	2001	2002	2003	2004	2005	2006	2007	2008	2009	2000	2001	2002	2003	2004	2005	2006	2007	2008	2009
EU-27	13.2	12.8	13.0	13.0	12.8	12.6	11.6	10.9	10.8	12.4	14.9	14.4	14.4	14.1	13.9	13.8	12.8	12.1	12.0	12.9	11.5	11.2	11.6	12.0	11.7	11.4	10.5	9.7	9.7	11.9
BE	17.7	16.3	16.1	17.8	15.4	13.0	11.2	11.2	10.1	11.1	19.8	18.1	17.3	18.7	16.0	13.6	12.3	12.2	11.1	11.7	15.6	14.6	14.9	16.9	14.7	12.5	10.2	10.2	9.2	10.5
BG		30.4	28.1	29.0	26.4	25.1	22.2	19.1	17.4	19.5		30.3	27.6	29.1	26.7	26.5	24.7	20.6	19.3	20.9		30.5	28.6	28.9	26.2	23.7	19.9	17.7	15.6	18.1
CZ			12.4	13.7	13.7	13.3	9.2	6.9	6.7	8.5			15.3	16.2	15.5	15.4	11.1	9.1	8.7	9.9			9.5	11.2	12.0	11.2	7.3	4.9	4.8	7.2
DK	4.7	5.2	5.2	5.2	5.1	4.3	3.6	4.3	4.2	5.2	5.2	5.6	5.8	5.5	5.5	5.1	3.8	3.8	4.3	4.9	4.3	4.9	4.6	5.0	4.8	3.6	3.4	4.8	4.2	5.5
DE	7.7	7.4	8.4	10.0	10.1	10.7	9.5	8.8	8.3	8.7	8.9	8.3	9.2	10.3	10.3	11.2	10.1	9.5	9.2	9.2	6.5	6.5	7.6	9.7	9.9	10.1	8.9	8.0	7.4	8.2
EE	14.5	14.3	10.3	10.2	12.1	10.2	8.8	8.9	8.8	14.9	15.7	18.1	12.8	10.8	14.5	(12.2)	(11.1)	(9.2)	(9.4)	14.8	13.3	10.7	(7.8)	(9.6)	(9.8)	(8.2)	(6.6)	(8.6)	(8.2)	14.9
IE			14.0	11.7	11.9	10.9	10.1	10.7	14.8	18.5			15.1	12.8	13.1	11.8	11.2	11.4	14.3	16.6			12.9	10.6	10.7	10.1	9.0	10.0	15.4	20.4
EL	16.9	16.1	15.3	18.3	16.8	16.1	12.2	11.5	11.7	12.6	21.5	20.1	19.3	22.0	21.3	19.7	15.5	14.8	14.4	15.5	12.5	12.2	11.3	14.7	12.4	12.6	8.9	8.3	8.9	9.6
ES	12.1	12.0	12.6	12.5	12.5	13.0	12.0	12.2	14.4	18.3	14.1	14.1	14.6	14.2	14.4	15.1	13.8	14.0	15.0	17.1	10.2	10.0	10.6	10.8	10.7	11.1	10.3	10.4	13.9	19.5
FR	10.2	9.9	10.3	9.9	10.5	10.8	10.9	10.3	10.3	12.4	11.5	11.5	11.4	10.6	11.1	11.6	11.9	11.0	10.5	12.0	8.8	8.3	9.3	9.3	9.8	10.0	10.0	9.6	10.1	12.8
IT	19.1	18.1	16.8	16.6	16.6	17.0	16.8	16.2	16.6	17.7	22.0	20.4	18.8	18.5	18.4	18.9	18.3	17.3	18.0	18.3	16.3	15.9	14.8	14.7	14.9	15.2	15.4	15.1	15.2	17.1
CY	10.1	7.8	8.4	8.9	9.4	19.5	10.7	9.0	9.7	10.1	13.7	10.6	10.4	11.3	12.2	21.5	11.2	9.6	10.9	11.3	5.7	4.6	6.0	6.3	6.3	17.3	10.2	8.3	8.2	8.6
LV			14.3	11.5	10.9	10.0	11.1	11.8	11.4	17.4			15.1	13.5	12.8	11.3	14.3	13.6	13.2	15.8			13.4	9.7	9.1	8.7	7.9	10.1	9.8	18.9
LT	17.0	16.0	11.8	10.3	10.9	8.6	8.2	7.0	8.9	12.4	15.7	13.9	11.6	10.9	11.5	9.2	(8.4)	7.8	9.3	10.7	18.3	18.1	11.9	9.8	10.3	(8.1)	(8.0)	(6.2)	(8.6)	14.1
LU	5.0	5.5	5.0	5.1	6.3	5.5	6.7	5.7	6.2	5.8	7.4	6.6	8.0	(5.8)	7.9	6.7	7.3	(6.6)	(7.8)	(5.5)	(2.7)	(4.4)	(2.1)	(4.5)	(4.6)	(4.3)	6.1	(4.7)	(4.6)	(6.0)
HU	15.4	14.6	13.9	12.6	12.7	12.9	12.4	11.3	11.5	13.4	17.9	16.9	15.6	14.5	14.5	14.7	13.9	12.6	13.0	14.2	12.9	12.4	12.2	10.8	10.9	11.2	11.0	9.9	10.1	12.7
MT	27.4	17.7	16.9	19.4	13.1	11.9	10.3	11.7	10.4	10.1	28.8	20.3	17.8	21.4	15.3	12.6	(10.4)	11.2	11.7	(10.1)	26.1	15.3	16.0	17.5	11.0	11.2	10.2	12.2	(9.1)	10.0
NL	3.8	4.1	4.0	5.1	5.3	5.3	4.0	3.5	3.4	4.1	5.3	5.4	4.7	5.6	5.6	5.5	4.4	4.0	3.8	4.1	2.4	2.8	3.4	4.7	5.0	5.0	3.7	3.1	3.1	4.1
AT	7.9	8.1	6.1	6.1	8.6	8.3	7.5	7.0	7.1	7.8	8.5	8.3	6.2	6.8	8.9	8.6	8.0	7.6	7.8	8.3	7.3	7.9	6.0	5.5	8.4	8.0	7.0	6.4	6.4	7.4
PL		17.1	17.5	16.7	15.0	13.9	12.6	10.6	9.0	10.1		18.1	18.0	16.8	15.6	14.5	13.1	11.9	10.8	10.8		16.1	17.0	16.5	14.4	13.4	12.1	9.3	7.3	9.4
PT	9.0	9.4	10.6	11.2	11.1	11.2	10.6	11.2	10.3	11.2	11.0	11.3	12.2	12.4	12.0	12.2	11.5	12.8	11.7	11.8	7.1	7.5	9.0	10.0	10.3	10.2	9.8	9.7	8.9	10.6
RO	20.2	18.3	21.6	20.3	19.8	16.8	14.8	13.3	11.6	13.9	21.0	19.8	23.5	21.9	20.8	18.8	16.6	15.1	14.5	16.8	19.4	16.7	19.8	18.7	18.9	14.9	13.0	11.6	8.8	11.2
SI		10.4	9.5	8.0	7.5	8.9	8.5	6.7	6.5	7.5		10.8	9.1	8.1	8.1	9.7	8.6	(6.6)	(6.2)	(6.9)		10.0	9.9	7.9	(7.0)	8.2	8.4	(6.8)	(6.7)	(7.9)
SK			27.1	18.2	17.9	15.8	14.4	12.5	11.1	12.5			28.0	18.6	18.8	17.3	16.0	14.1	12.5	12.9			26.1	17.8	16.9	14.4	12.8	11.0	9.6	12.2
FI	9.7	8.5	8.6	9.6	9.1	7.8	7.7	7.0	7.8	9.9	9.8	9.0	8.5	9.8	9.3	7.8	8.1	7.7	7.9	9.2	9.6	8.1	8.6	9.4	8.8	7.9	7.2	6.4	7.7	10.5
SE	6.3	7.7	7.5	6.8	7.6	10.5	9.3	7.5	7.8	9.6	5.8	7.6	7.5	6.3	6.8	10.1	9.0	7.4	8.2	9.5	6.8	7.7	7.6	7.3	8.3	11.0	9.6	7.5	7.5	9.8
UK	10.9	11.0	11.1	9.0	8.4	8.4	8.5	11.9	12.1	13.3	13.3	13.1	13.2	10.4	9.6	9.5	9.6	13.7	14.1	14.6	8.6	8.9	9.1	7.6	7.2	7.3	7.5	10.1	10.2	12.1

Source: EU Labour Force Survey

Note: Empty cells correspond to data not available. Data in brackets lack reliability due to small sample size.

## Annex 2: NEET-rates by main age groups 2000-2009

	Age group 15-19										Age group 20-24										Age group 25-29									
	2000	2001	2002	2003	2004	2005	2006	2007	2008	2009	2000	2001	2002	2003	2004	2005	2006	2007	2008	2009	2000	2001	2002	2003	2004	2005	2006	2007	2008	2009
EU-27	7.8	7.5	7.5	7.6	7.3	7.4	6.9	6.5	6.5	7.0	18.4	18.0	18.2	18.3	18.0	17.5	16.2	15.2	15.0	17.4	20.0	19.7	20.2	19.9	19.6	19.0	18.0	17.1	16.8	18.8
BE	16.6	14.7	13.3	14.2	11.6	8.4	6.2	6.5	5.2	5.5	18.8	17.8	18.8	21.2	18.9	17.6	16.3	15.9	15.1	16.7	16.2	16.9	17.0	18.4	18.0	15.9	16.0	16.5	15.6	16.2
BG		20.9	17.5	19.7	18.7	17.8	16.4	14.5	13.7	14.8		39.9	38.8	38.8	35.0	33.5	29.3	24.6	21.6	24.5		37.6	36.6	33.9	33.4	30.5	27.5	22.9	21.1	24.0
CZ			6.3	8.4	7.9	8.9	4.3	2.8	2.6	3.5			17.7	18.4	19.1	17.3	13.7	10.8	10.4	13.0			23.0	23.4	23.8	22.5	20.9	19.2	17.4	19.8
DK	(2.5)	3.2	2.7	2.7	2.9	2.7	2.4	2.8	2.4	3.2	6.6	7.1	7.7	7.7	7.5	6.2	5.0	5.9	6.1	7.2	8.2	8.9	8.8	9.4	8.6	8.8	6.6	6.5	5.8	7.8
DE	2.8	2.7	3.2	4.6	3.4	4.2	4.0	3.7	3.8	3.9	13.1	12.6	13.8	15.6	16.8	17.2	15.0	13.8	12.6	13.1	15.3	15.8	16.2	17.8	18.9	18.3	17.8	15.9	14.4	14.9
EE	(6.9)	(7.8)			(5.8)				(5.4)	(7.1)	22.0	20.8	16.5	16.6	19.0	16.6	(13.9)	(12.3)	11.9	21.5	24.8	23.6	23.5	22.3	22.1	20.0	(14.9)	17.2	17.0	25.7
IE			13.3	10.2	10.3	8.6	7.8	7.9	11.0	11.5			14.6	13.0	13.2	12.9	11.9	13.0	18.2	24.9			15.4	14.4	14.5	13.3	13.3	13.7	17.9	23.3
EL	9.0	7.6	7.1	13.3	10.6	10.8	6.7	6.5	6.9	6.9	25.1	24.1	22.7	22.7	22.1	20.6	17.2	16.3	16.2	18.0	28.0	27.3	26.2	24.4	24.9	22.8	21.1	21.3	20.0	21.1
ES	8.7	8.3	8.7	8.7	8.3	10.7	10.1	10.1	11.4	12.6	14.9	15.0	15.6	15.5	15.8	14.9	13.5	13.8	17.0	23.2	21.0	19.6	19.8	18.7	17.6	16.1	14.9	14.4	17.4	23.3
FR	5.1	5.0	5.4	4.7	5.1	5.7	6.0	5.3	5.2	6.5	15.8	15.0	15.3	15.2	16.0	16.0	15.9	15.3	15.3	18.1	19.2	18.5	18.8	17.6	17.7	17.3	16.9	17.0	16.6	18.3
IT	12.1	11.2	10.1	10.1	11.6	11.7	11.6	10.7	11.4	10.9	25.1	24.1	22.6	22.2	21.2	22.0	21.6	21.3	21.6	24.1	26.0	24.9	24.2	23.8	23.7	24.6	23.1	23.3	23.8	25.5
CY	6.2	4.8	5.1	4.8	4.1	18.2	7.5	4.2	5.6	5.1	14.2	10.9	11.8	13.0	14.7	20.7	13.7	13.2	13.3	14.7	15.0	13.7	11.4	14.7	11.6	15.2	13.8	12.2	12.7	13.9
LV			9.5	5.7	5.3	6.3	7.6	8.6	7.5	8.9			19.7	18.2	17.0	13.9	14.6	14.9	15.0	24.5			24.3	22.5	22.8	21.3	18.3	17.9	16.9	26.4
LT	9.0	7.5	5.7	4.6	(4.3)	(2.9)	(3.3)	(3.2)	(2.9)	(3.9)	25.9	25.6	18.9	17.0	18.2	14.9	13.4	10.7	14.6	20.3	22.7	25.4	22.3	20.7	18.9	15.4	14.0	16.4	19.1	21.2
LU			(3.0)	(2.1)	(3.0)	(2.2)	(4.1)			(3.5)	8.2	9.0	7.0	8.1	9.6	8.9	9.4	(8.5)	(10.0)	(8.1)	12.9	12.5	11.6	9.9	11.2	9.1	10.4	10.3	14.2	10.5
HU	8.5	8.8	7.9	6.7	6.5	6.4	6.3	5.6	5.5	5.7	20.5	19.5	19.0	17.9	18.4	19.0	18.2	16.7	17.3	20.8	26.6	25.5	25.7	24.6	23.3	23.6	22.7	22.0	23.0	24.9
MT	38.4	19.7	20.4	22.5	12.8	11.4	(9.6)	12.0	11.1	(8.2)	15.7	15.6	13.5	16.4	13.5	12.4	10.9	11.4	(9.7)	11.8	25.8	22.8	22.0	23.1	20.9	19.8	19.7	17.7	17.2	17.7
NL	2.2	1.9	2.5	3.2	3.1	3.1	2.1	2.0	1.9	2.1	5.5	6.1	5.5	7.1	7.6	7.5	6.1	5.1	5.0	6.2	9.5	8.7	9.9	9.7	9.1	9.4	8.4	7.6	7.1	7.6
AT	6.4	7.0	3.5	4.8	6.9	5.9	5.2	4.8	5.4	5.3	9.5	9.2	8.8	7.5	10.3	10.6	9.6	9.1	8.8	10.3	12.4	11.4	11.3	10.0	12.1	12.3	12.2	12.5	11.3	11.4
PL		7.0	7.2	6.5	4.9	4.1	3.8	3.3	2.6	3.5		27.4	27.9	26.7	24.4	22.7	20.4	17.1	14.9	16.1		28.5	30.4	29.5	28.8	27.3	24.3	21.6	19.3	20.5
PT	7.8	8.0	8.7	9.5	9.5	8.6	8.4	7.8	7.1	6.7	10.1	10.6	12.2	12.6	12.5	13.2	12.5	14.1	13.1	15.4	11.8	11.4	12.7	14.1	13.2	14.2	14.2	15.1	14.6	14.5
RO	14.0	11.7	14.3	12.6	14.8	11.8	10.9	9.9	9.0	9.7	26.6	25.0	29.3	28.7	25.2	22.2	18.9	16.5	13.8	17.3	22.4	22.3	27.1	26.4	23.8	21.3	19.6	17.6	16.2	19.0
SI		(6.2)	(5.7)	(4.2)	(3.9)	(5.4)	(5.4)	(4.4)	(3.7)	(3.7)		14.0	12.7	11.1	10.7	12.0	11.3	8.6	8.7	10.4		9.5	11.2	10.9	9.4	11.2	11.7	10.8	9.1	12.5
SK			21.3	9.6	8.1	7.8	7.9	7.3	5.5	5.0			32.5	26.4	27.0	23.4	20.2	17.3	16.1	19.3			27.5	28.0	27.6	28.3	24.9	24.7	22.8	25.8
FI	5.6	4.8	4.9	6.4	5.6	4.3	3.6	3.4	5.3	6.3	13.8	12.2	12.2	12.7	12.5	11.2	11.6	10.6	10.5	13.5	16.1	14.5	13.4	12.7	13.7	12.7	12.6	11.1	10.9	14.1
SE	3.0	5.7	6.0	4.2	4.6	8.0	6.4	4.3	4.4	5.4	9.1	9.7	9.2	9.8	10.8	13.3	12.7	11.1	11.7	14.1	7.8	6.7	7.6	7.9	8.6	10.2	10.2	8.8	8.5	10.4
UK	7.5	7.6	7.5	7.2	6.4	6.3	6.5	8.1	7.9	8.2	14.4	14.5	14.9	10.8	10.4	10.5	10.5	15.5	16.1	17.9	15.2	15.5	15.3					14.9	15.0	16.6

Source: EU Labour Force Survey

Note: Empty cells correspond to data not available. Data in brackets lack reliability due to small sample size.

### Annex 3: NEET aged 15-24 by labour market status (% of NEET in the age group), 2000-2009

	Unemployed, %											Inactive, %									
	2000	2001	2002	2003	2004	2005	2006	2007	2008	2009		2000	2001	2002	2003	2004	2005	2006	2007	2008	2009
EU-27	50.8	49.2	49.6	48.9	50.0	48.4	47.9	45.0	45.9	51.6	49.2	50.8	50.4	51.1	50.0	51.6	52.1	55.0	54.1	48.4	
BE	28.8	32.5	34.2	36.5	40.9	45.4	49.1	45.5	48.0	54.1	71.2	67.5	65.8	63.5	59.1	54.6	50.9	54.5	52.0	45.9	
BG		41.4	38.4	26.6	26.5	23.5	23.0	21.4	20.1	22.6		58.6	61.6	73.4	73.5	76.5	77.0	78.6	79.9	77.4	
CZ			49.2	46.7	51.1	45.9	59.8	44.9	41.8	57.0			50.8	53.3	48.9	54.1	40.2	55.1	58.2	43.0	
DK	38.3	53.8	45.1	45.3	46.2	37.2	44.4	38.1	45.2	50.0	61.7	46.2	54.9	54.7	53.8	62.8	55.6	61.9	54.8	50.0	
DE	42.9	41.9	46.4	48.0	53.5	57.0	55.8	53.4	50.6	51.2	57.1	58.1	53.6	52.0	46.5	43.0	44.2	46.6	49.4	48.8	
EE	50.3	47.6	45.1	46.1	44.3	44.1			36.8	58.4	49.7	52.4	54.9	53.9	55.7	55.9			63.2	41.6	
IE			26.4	31.0	31.4	33.9	36.6	38.3	43.6	51.4			73.6	69.0	68.6	66.1	63.4	61.7	56.4	48.6	
EL	60.9	59.0	58.8	44.8	53.6	47.8	57.4	53.0	49.6	54.0	39.1	41.0	41.2	55.2	46.4	52.2	42.6	47.0	50.4	46.0	
ES	68.0	55.8	58.7	60.8	60.0	47.7	46.7	47.1	57.2	67.2	32.0	44.2	41.3	39.2	40.0	52.3	53.3	52.9	42.8	32.8	
FR	64.4	60.2	60.6	58.6	59.0	60.2	61.5	58.3	57.8	62.9	35.6	39.8	39.4	41.4	41.0	39.8	38.5	41.7	42.2	37.1	
IT	52.6	49.2	50.0	49.4	41.6	40.6	34.7	32.7	33.1	36.4	47.4	50.8	50.0	50.6	58.4	59.4	65.3	67.3	66.9	63.6	
CY	37.0	34.6	34.5	32.6	33.3	26.7	31.5	35.6	29.9	44.6	63.0	65.4	65.5	67.4	66.7	73.3	68.5	64.4	70.1	55.4	
LV			35.0	37.9	39.4	28.0	32.4	26.3	34.8	59.2			65.0	62.1	60.6	72.0	67.6	73.7	65.2	40.8	
LT	55.3	52.2	47.5	51.5	46.8	37.9	26.8	24.3	29.2	53.2	44.7	47.8	52.5	48.5	53.2	62.1	73.2	75.7	70.8	46.8	
LU	36.0	36.4	44.0	54.9	64.5	63.6	59.7	63.2		65.5	64.0	63.6	56.0	45.1	35.5	36.4	40.3	36.8		34.5	
HU	27.9	24.0	26.6	28.3	29.9	35.4	36.8	37.2	38.8	44.8	72.1	76.0	73.4	71.7	70.1	64.6	63.2	62.8	61.2	55.2	
MT	22.3	39.5	33.7	36.6	55.7	59.7	60.8	46.2	45.6	58.0	77.7	60.5	66.3	63.4	44.3	40.3	39.2	53.8	54.4	42.0	
NL	25.6	27.5	27.5	33.3	41.5	37.7	34.1	28.6	26.5	34.1	74.4	72.5	72.5	66.7	58.5	62.3	65.9	71.4	73.5	65.9	
AT	35.4	30.9	54.1	45.2	46.5	49.4	45.3	48.6	43.7	50.0	64.6	69.1	45.9	54.8	53.5	50.6	54.7	51.4	56.3	50.0	
PL		67.3	66.3	65.3	66.7	65.7	57.9	46.2	40.0	48.5		32.7	33.7	34.7	33.3	34.3	42.1	53.8	60.0	51.5	
PT	39.6	40.0	45.3	50.9	51.8	54.1	55.7	54.5	56.9	60.7	60.4	60.0	54.7	49.1	48.2	45.9	44.3	45.5	43.1	39.3	
RO	38.6	37.7	38.7	30.5	36.9	35.1	41.9	43.6	45.7	43.2	61.4	62.3	61.3	69.5	63.1	64.9	58.1	56.4	54.3	56.8	
SI		50.0	54.7	58.8	57.3	47.8	47.1	40.3	47.7	49.3		50.0	45.3	41.3	42.7	52.2	52.9	59.7	52.3	50.7	
SK			53.9	70.9	68.7	65.2	62.5	54.0	54.5	65.6			46.1	29.1	31.3	34.8	37.5	46.0	45.5	34.4	
FI	49.0	48.2	51.8	47.9	42.2	47.4	46.8	44.3	41.8	46.9	51.0	51.8	48.2	52.1	57.8	52.6	53.2	55.7	58.2	53.1	
SE	38.1	33.8	34.7	47.1	50.0	46.7	50.5	50.0	50.0	55.2	61.9	66.2	65.3	52.9	50.0	53.3	49.5	50.0	50.0	44.8	
UK	42.7	41.8	41.1	42.2	45.2	45.2	47.1	43.7	45.5	50.4	57.3	58.2	58.9	57.8	54.8	54.8	52.9	56.3	54.5	49.6	

Source: EU Labour Force Survey

Note: Empty cells correspond to data not available.

**Annex 4: NEET aged 18-24 by educational attainment (% of NEET in the age group), 2000-2009**

	At most lower secondary education, %										At least upper secondary education, %									
	2000	2001	2002	2003	2004	2005	2006	2007	2008	2009	2000	2001	2002	2003	2004	2005	2006	2007	2008	2009
EU-27	44.0	44.4	43.6	44.0	44.2	44.7	46.3	47.1	48.9	46.5	56.0	55.6	56.4	56.0	55.8	55.3	53.7	52.9	51.1	53.5
BE	36.0	37.7	37.4	36.8	37.8	40.1	42.5	43.1	45.5	41.1	64.0	62.3	62.6	63.2	62.2	59.9	57.5	56.9	54.5	58.9
BG		42.0	44.9	46.6	48.5	49.4	45.7	42.9	47.0	44.8		58.0	55.1	53.4	51.5	50.6	54.3	57.1	53.0	55.2
CZ			23.6	28.1	27.6	27.2	26.2	31.2	38.2	30.4			76.4	71.9	72.4	72.8	73.8	68.8	61.8	69.6
DK	45.6	38.2	38.2	50.0	38.5	46.4	43.5	60.4	58.2	50.0	54.4	61.8	61.8	50.0	61.5	53.6	56.5	39.6	41.8	50.0
DE	57.5	55.9	53.0	53.1	48.9	52.9	55.9	56.9	55.7	53.8	42.5	44.1	47.0	46.9	51.1	47.1	44.1	43.1	44.3	46.2
EE	41.1	42.9	45.5	42.4	34.1	38.6		50.5	39.6	40.9	58.9	57.1	54.5	57.6	65.9	61.4		49.5	60.4	59.1
IE			38.1	41.6	42.9	42.1	42.5	41.9	35.3	32.1			61.9	58.4	57.1	57.9	57.5	58.1	64.7	67.9
EL	31.9	32.9	31.7	28.6	27.4	26.4	33.5	31.2	32.5	32.6	68.1	67.1	68.3	71.4	72.6	73.6	66.5	68.8	67.5	67.4
ES	61.1	60.6	62.2	65.3	64.7	63.9	64.0	65.9	69.4	69.9	38.9	39.4	37.8	34.7	35.3	36.1	36.0	34.1	30.6	30.1
FR	50.7	53.0	49.3	45.9	46.1	44.4	45.9	47.8	45.2	42.9	49.3	47.0	50.7	54.1	53.9	55.6	54.1	52.2	54.8	57.1
IT	50.2	53.2	51.7	51.0	48.3	48.6	47.3	46.5	46.4	46.0	49.8	46.8	48.3	49.0	51.7	51.4	52.7	53.5	53.6	54.0
CY	35.0	38.7	32.5	30.9	34.3	21.2	22.1	24.4	29.9	20.5	65.0	61.3	67.5	69.1	65.7	78.8	77.9	75.6	70.1	79.5
LV			44.1	50.0	45.1	46.8	40.4	43.3	44.6	39.9			55.9	50.0	54.9	53.2	59.6	56.7	55.4	60.1
LT	39.4	39.8	42.2	42.4	33.6	28.1	36.8	30.2	31.5	33.7	60.6	60.2	57.8	57.6	66.4	71.9	63.2	69.8	68.5	66.3
LU	56.7	56.9	66.2	45.5	54.4	54.2	57.5	53.4	54.1	45.2	43.3	43.1	33.8	54.5	45.6	45.8	42.5	46.6	45.9	54.8
HU	42.1	41.4	42.0	44.4	47.0	46.7	47.9	46.3	49.0	44.7	57.9	58.6	58.0	55.6	53.0	53.3	52.1	53.7	51.0	55.3
MT	64.1	68.2		77.1	74.1					83.5	35.9	31.8		22.9	25.9					16.5
NL	66.0	64.7	65.3	60.9	55.4	57.8	62.7	61.4	62.2	59.6	34.0	35.3	34.7	39.1	44.6	42.2	37.3	38.6	37.8	40.4
AT	46.0	45.8	46.8	47.9	38.2	38.2	44.1	46.6	45.5	42.1	54.0	54.2	53.2	52.1	61.8	61.8	55.9	53.4	54.5	57.9
PL		20.7	21.3	19.2	19.2	19.8	22.1	20.7	22.8	22.6		79.3	78.7	80.8	80.8	80.2	77.9	79.3	77.2	77.4
PT	77.7	76.9	74.8	71.2	73.2	71.7	69.4	67.6	66.1	65.5	22.3	23.1	25.2	28.8	26.8	28.3	30.6	32.4	33.9	34.5
RO	35.3	35.0	37.3	39.0	44.7	43.8	45.3	47.8	50.7	45.5	64.7	65.0	62.7	61.0	55.3	56.2	54.7	52.2	49.3	54.5
SI		25.8	23.7	25.5	24.2	25.5	28.8	24.4	24.1	28.3		74.2	76.3	74.5	75.8	74.5	71.2	75.6	75.9	71.7
SK			18.0	17.2	23.4	25.0	29.0	31.7	32.6	23.5			82.0	82.8	76.6	75.0	71.0	68.3	67.4	76.5
FI	30.6	37.2	37.7	42.5	40.2	39.0	40.2	40.2	43.4	41.9	69.4	62.8	62.3	57.5	59.8	61.0	59.8	59.8	56.6	58.1
SE	27.8	37.8	35.6	39.8	37.5	40.0	45.7	42.6	47.1	41.6	72.2	62.2	64.4	60.2	62.5	60.0	54.3	57.4	52.9	58.4
UK	57.8	55.7	55.3	44.4	50.0	47.5	47.1	51.0	52.0	46.7	42.2	44.3	44.7	55.6	50.0	52.5	52.9	49.0	48.0	53.3

Source: EU Labour Force Survey

Note: Empty cells correspond to data not available.

**Annex 5: NEET by labour market status, age group and gender (% of NEET in the age group), 2009**

	15-24					
	Women		Men		Total	
	Unemployed, %	Inactive, %	Unemployed, %	Inactive, %	Unemployed, %	Inactive, %
EU-27	40.3	59.7	63.0	37.0	51.6	48.4
BE	47.0	53.0	61.0	39.0	54.1	45.9
BG	14.4	85.6	31.5	68.5	22.6	77.4
CZ	39.4	60.6	80.6	19.4	57.0	43.0
DK	38.8	61.2	58.2	41.8	50.0	50.0
DE	38.0	62.0	65.4	34.6	51.2	48.8
EE					58.4	41.6
IE	36.7	63.3	63.2	36.8	51.4	48.6
EL	51.0	49.0	58.8	41.2	54.0	46.0
ES	58.5	41.5	74.4	25.6	67.2	32.8
FR	55.0	45.0	71.1	28.9	62.9	37.1
IT	31.3	68.7	41.5	58.5	36.4	63.6
CY	41.2	58.8	49.4	50.6	44.6	55.4
LV	40.5	59.5	74.1	25.9	59.2	40.8
LT	36.4	63.6	66.0	34.0	53.2	46.8
LU					65.5	34.5
HU	33.1	66.9	57.8	42.2	44.8	55.2
MT					58.0	42.0
NL	25.0	75.0	41.5	58.5	34.1	65.9
AT	41.0	59.0	60.8	39.2	50.0	50.0
PL	37.0	63.0	61.7	38.3	48.5	51.5
PT	58.5	41.5	62.9	37.1	60.7	39.3
RO	28.1	71.9	65.2	34.8	43.2	56.8
SI	40.0	60.0	55.7	44.3	49.3	50.7
SK	49.2	50.8	82.0	18.0	65.6	34.4
FI	37.4	62.6	55.2	44.8	46.9	53.1
SE	44.7	55.3	64.9	35.1	55.2	44.8
UK	33.6	66.4	70.0	30.0	50.4	49.6

Source: EU Labour Force Survey

Note: Empty cells correspond to data not available.

**Annex 5 (cont.): NEET by labour market status, age group and gender (% of NEET in the age group), 2009**

	18-24						25-29					
	Women		Men		Total		Women		Men		Total	
	Unemployed, %	Inactive, %	Unemployed, %	Inactive, %	Unemployed, %	Inactive, %	Unemployed, %	Inactive, %	Unemployed, %	Inactive, %	Unemployed, %	Inactive, %
EU-27	41.1	58.9	65.4	34.6	52.8	47.2	30.0	70.0	65.7	34.3	43.6	56.4
BE	50.3	49.7	66.4	33.6	57.9	42.1	36.9	63.1	67.7	32.3	49.1	50.9
BG	15.4	84.6	33.9	66.1	24.5	75.5	16.8	83.2	37.0	63.0	24.6	75.4
CZ	38.2	61.8	81.1	18.9	57.1	42.9	18.7	81.3	68.8	31.2	30.8	69.2
DK	41.0	59.0	62.0	38.0	53.0	47.0	35.7	64.3	63.9	36.1	48.7	51.3
DE	38.1	61.9	65.5	34.5	50.8	49.2	28.6	71.4	72.0	28.0	46.3	53.7
EE					58.8	41.2					44.0	56.0
IE	39.8	60.2	69.3	30.7	56.0	44.0	27.0	73.0	70.9	29.1	49.1	50.9
EL	53.2	46.8	60.3	39.7	56.1	43.9	44.9	55.1	78.9	21.1	55.7	44.3
ES	60.7	39.3	77.2	22.8	69.5	30.5	53.8	46.2	79.1	20.9	66.1	33.9
FR	55.6	44.4	73.1	26.9	64.6	35.4	39.1	60.9	72.1	27.9	51.4	48.6
IT	32.9	67.1	44.1	55.9	38.4	61.6	24.5	75.5	44.6	55.4	31.8	68.2
CY	44.4	55.6	52.7	47.3	47.6	52.4	25.1	74.9	60.5	39.5	36.0	64.0
LV	42.8	57.2	77.3	22.7	61.9	38.1	41.4	58.6	69.5	30.5	54.5	45.5
LT	36.6	63.4	66.7	33.3	53.8	46.2	40.2	59.8	70.9	29.1	56.1	43.9
LU											43.8	56.2
HU	34.4	65.6	59.6	40.4	46.6	53.4	21.4	78.6	63.3	36.7	35.7	64.3
MT					53.9	46.1						
NL	26.3	73.7	43.6	56.4	35.7	64.3	17.8	82.2	45.1	54.9	27.6	72.4
AT	36.3	63.7	58.4	41.6	46.3	53.7	22.7	77.3	58.7	41.3	34.8	65.2
PL	37.4	62.6	62.5	37.5	49.3	50.7	25.5	74.5	56.6	43.4	35.1	64.9
PT	59.5	40.5	66.9	33.1	63.3	36.7	58.5	41.5	71.9	28.1	63.9	36.1
RO	29.4	70.6	69.5	30.5	45.5	54.5	15.2	84.8	64.5	35.5	31.1	68.9
SI	42.4	57.6	56.6	43.4	50.5	49.5	44.3	55.7	60.8	39.2	51.2	48.8
SK	49.4	50.6	84.5	15.5	66.9	33.1	25.4	74.6	81.3	18.7	41.9	58.1
FI	40.0	60.0	59.4	40.6	50.4	49.6	28.0	72.0	61.8	38.2	40.4	59.6
SE	46.9	53.1	67.7	32.3	57.7	42.3	34.7	65.3	69.6	30.4	50.0	50.0
UK	32.6	67.4	71.1	28.9	50.3	49.7	18.0	82.0	63.3	36.7	34.5	65.5

Source: EU Labour Force Survey

Note: Empty cells correspond to data not available.