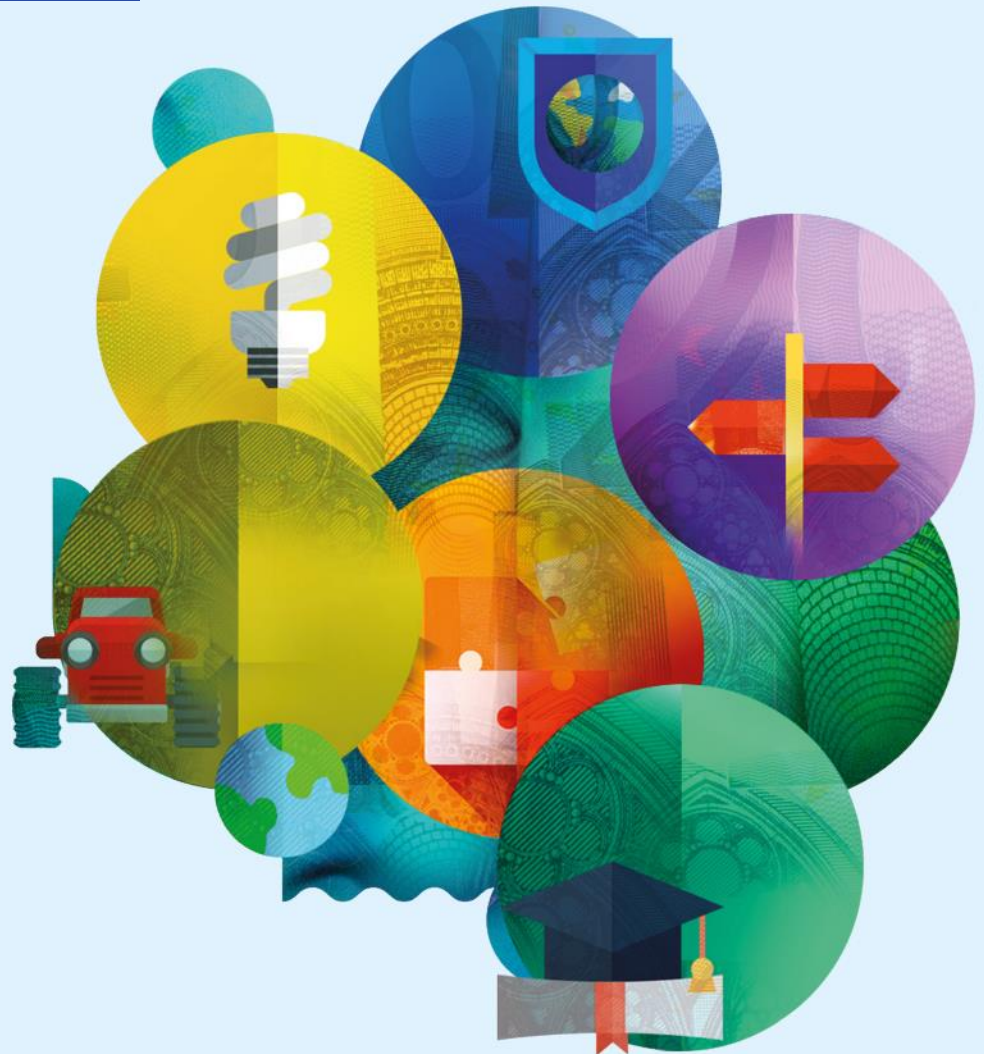


Contribution of the MFF to the new European Disability Strategy

DDG A. Sukova





FAIR & BALANCED

A new architecture for the future

In billion euro, current prices



I. SINGLE MARKET, INNOVATION AND DIGITAL

- 1 Research and Innovation
- 2 European Strategic Investments
- 3 Single Market
- 4 Space



II. COHESION AND VALUES

- 5 Regional Development and Cohesion
- 6 Economic and Monetary Union
- 7 Investing in People, Social Cohesion and Values



III. NATURAL RESOURCES AND ENVIRONMENT

- 8 Agriculture and Maritime Policy
- 9 Environment and Climate Action



IV. MIGRATION AND BORDER MANAGEMENT

- 10 Migration
- 11 Border Management



V. SECURITY AND DEFENCE

- 12 Security
- 13 Defence
- 14 Crisis Response



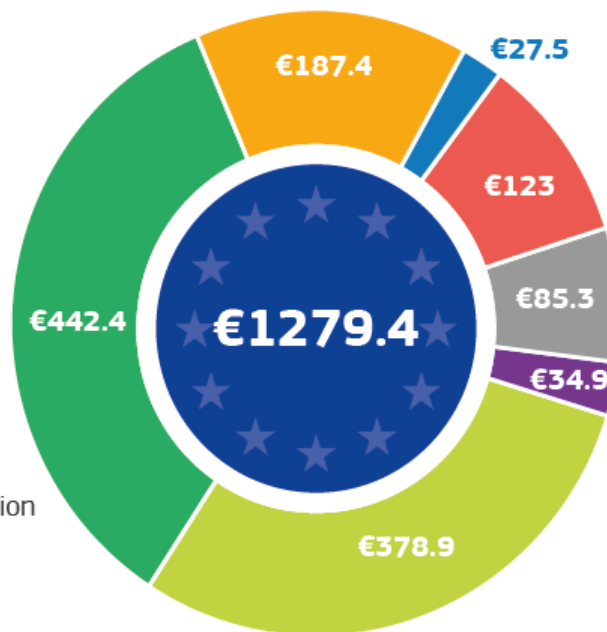
VI. NEIGHBOURHOOD AND THE WORLD

- 15 External Action
- 16 Pre-Accession Assistance



VII. EUROPEAN PUBLIC ADMINISTRATION

- 17 European Public Administration





The ESF+ in the MFF 2021-2027



II COHESION & VALUES

5 Regional Development & Cohesion

- European Regional Development Fund
- Cohesion Fund
- Support to the Turkish-Cypriot Community

6 Economic & Monetary Union

- Reform Support Programme including the Reform Delivery Tool and Convergence Facility
- Protection of the Euro Against Counterfeiting

7 Investing in People, Social Cohesion & Values

- European Social Fund + (incl. Integration of Migrants & Health)
- ERASMUS+
- European Solidarity Corps
- Justice, Rights & Values
- Creative Europe (incl. MEDIA)

European
Solidarity
Fund

European
Investment
Stabilization
Function

Globalization
Adjustment
Fund



European
Commission



The ESF+ components

ESF +

Employment, education and
social inclusion (ESF)

Investing in youth (YEI)

Support to the most
Deprived (FEAD)

EU priority actions /
Experimentation (EaSI)

Health



Shared Management
(In)direct Management



European
Commission



ESF+ SPECIFIC OBJECTIVES

A more social Europe (European Pillar of Social Rights)

EMPLOYMENT

- Access to employment
- Modernising labour market
- Women's labour market participation, work/life balance, childcare, working environment, adaptation of workers, active and healthy ageing

EDUCATION TRAINING

- Quality and inclusive education and training
- Labour market relevance of Education and training systems
- Lifelong learning, upskilling, anticipating change and new skills requirements

SOCIAL INCLUSION

- Active inclusion
- Integration of migrants and marginalised such as Roma
- Access to services; social protection healthcare systems and long term care
- Social integration of people at risk of poverty;
- Addressing material deprivation

Horizontal principles: Gender, Equal opps. Non-discrimination

Health

Contribution to Smarter Europe; Greener, low-carbon Europe



European
Commission

ESF + €101,2 Billion

ESF+ Shared management

€100 billion

Concentration requirements

- CSR implementation
- at least 25% Social inclusion
- at least 2% material deprivation (4% EU-level target)
- at least 10% in Member States with high NEET rate

Outermost Regions/NSRF €400 million

ESF+

(in)direct management

- Employment and Social Innovation strand
- Health strand

Transnationality

€200 million

€1,2 billion

€761 million

€413 million



DISABILITY AND THE ESF+: AN OVERVIEW

ESF+

- Support to the transition from institutional/residential care to family and community-based care
- Specific objective on access to quality, sustainable and affordable services
- Equal opportunities and non-discrimination (including disability and transition from institutional /residential to family and community-based care)

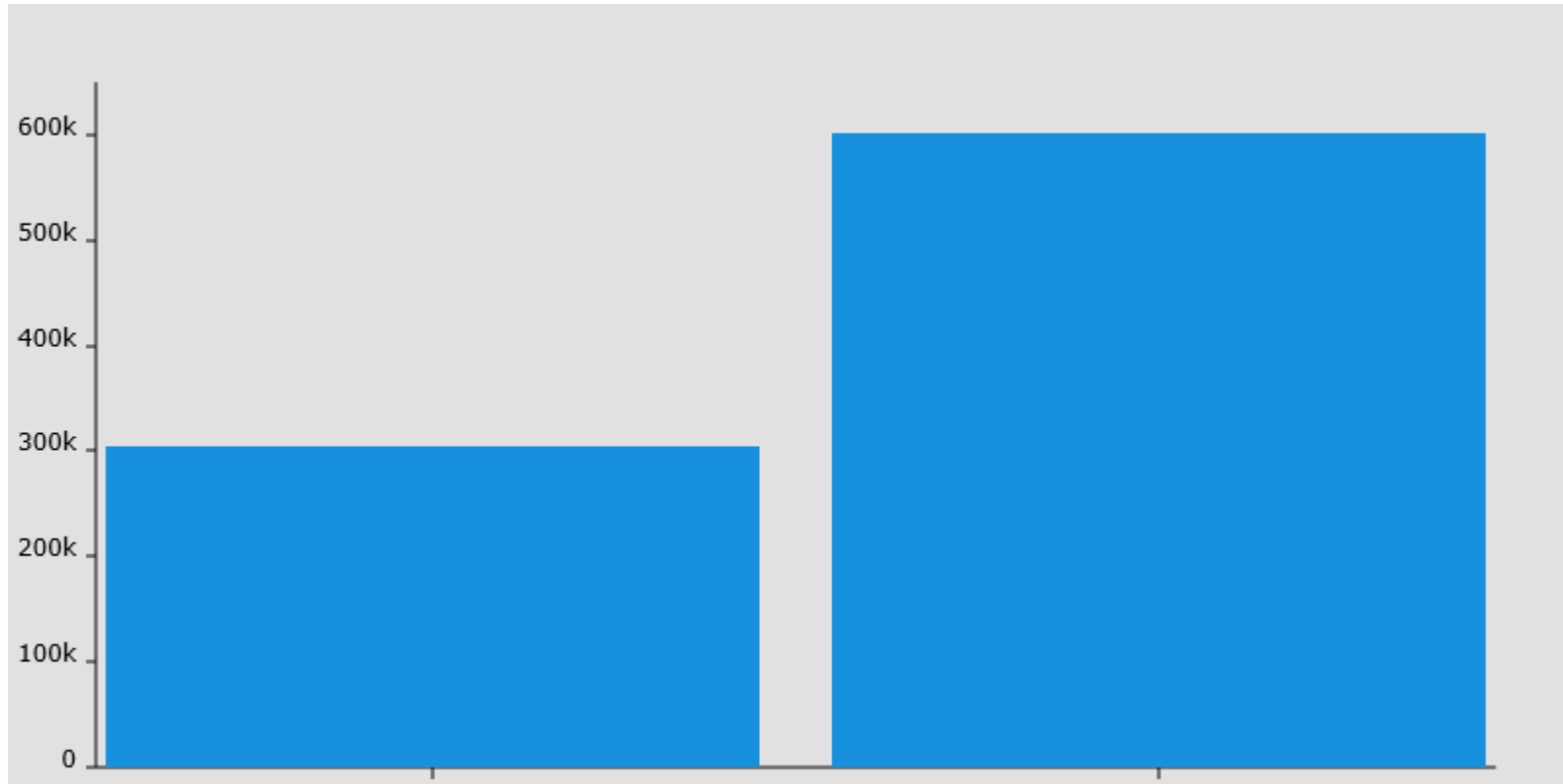
DISABILITY AND THE ESF+: AN OVERVIEW

Common provisions regulations

- Policy objective 4: a more social Europe
- Enabling conditions (Art. 11) (2)
 - ❖ Charter of Fundamental Rights
 - ❖ UN Convention on the Rights of Persons with Disabilities (UNCRPD)
- Partnership principle with regional and local authorities (art. 6)

Participants with disabilities (2015 and 2016)

Implemented: 601 511 participants



PROJECT EXAMPLE 1: BULGARIA

The Foster Care Project

- Substitute family care for children placed in institutions and children with disabilities
- Recruitment, consultation, training and supervision of foster families in all 28 regions
- So far over 2000 children in foster care in more than 1700 families

PROJECT EXAMPLE 2: LITHUANIA

Development of integrated services in Anykščiai district

- High-quality integrated services for the disabled and the elderly
- Better availability of nursing and social services at home, favourable conditions for people to live independently
- Development of volunteering to organise leisure activities
- 88 people supported (original target 55 people)
- Surveys confirm excellent results

THANK YOU FOR LISTENING

“

Our social funds are indispensable bricks in the new architecture of the EU budget, to empower people, make sure they can make the best out of our changing world of work, and accompany those who need it most.

Marianne Thyssen

#EUBudget