



INFO DAY SSH-2009-3.2.2

Social platform on research for families and family policies

Marc Goffart

**European Commission – DG Research
Research in Economic, Social and Human Sciences**

Meeting Room CSC/LSC, Rue Joseph II, 79 (block 2C) Or via Rue de Loi 80
Brussels, 23/10/2008, 13:30 – 17:00



23/10/2008

DG Research / L.2

1



Important features of a social platform on Sustainable Lifestyles

- Mix of scientific, civil society and policy experience, as well as good management and communication skills.
- European coverage and balances, within the consortium and among interests the stakeholders:
 - Geographical balance (Europe and beyond, if relevant);
 - Balance of academic disciplines and methodologies, as well as of sectoral interests;
 - Balance of variety civil society and policy-making interests;
- Need to be operational at short notice:
 - expected life-span of 12-18 months (starting Sept. 2010?)
 - with results for the SSH research Roadmap 2012-2013.





2009 WP Evaluation Criteria (1/3)

➤ **1. Scientific and/or technological excellence**

- Soundness of concept, and quality of objectives;
- relevance to the objectives of the specific/SSH programme;
- **SA: Quality and effectiveness** of the support action mechanisms, and associated work plan.

NB:

- The threshold for each individual criteria will be 3 out of 5.
- The overall threshold for the three individual scores is 10 (out of 15).





2009 WP Evaluation Criteria (2/3)

➤ 2. Quality and efficiency of the implementation and management

- Appropriateness of the **management** structure & procedures
- Quality & relevant experience of the **individual** participants
- SA: Quality of the **consortium** as a whole (including complementarity, balance) [for SA: *only if relevant*]
- SA: Appropriateness of the allocation and justification of the **resources** to be committed (budget, staff, equipment)





2009 WP Evaluation Criteria (3/3)

➤ 3. Potential impact through the development, dissemination and use of project results

- Contribution, at the European [and/or international] level, to the expected impacts listed in the work programme under the relevant topic/activity;
- SA: **Appropriateness** of measures for spreading excellence, exploiting results, and dissemination knowledge, through **engagement with stakeholders, and the public at large.**



Administrative details on WP2010 topic SSH.2010.2.1-4. Social platform on Sustainable Lifestyles

- Call identifier: FP7-SSH-2010-4
(see SSH WP2010 & Call Fiche)
- Date of publication: 30 July 2009
- Deadline: **15 December** 2009 at **17.00.00**
(Brussels local time)
- Funding scheme: Coordination and support action
(**supporting action**)
- Minimum conditions: **At least 1** legal entity
- Indicative Budget per topic: **1.500.000** EUR
- For topic SSH.2010.2.1-4 only one proposal will be selected.





*SSH-2009 topic: **Social Platform on research for families and family policies** Scope & activities*

- The social platform will define a future **research agenda** for families and family policies,
 - based on a focussed, critical review of **existing research**,
 - and taking account of key **policy questions** in this context.
 - **Foresight** dimension: it will look also at the future of our families and its related policies.
- Complementary/synergetic to the high-level group of policy experts on demographic questions and its Stakeholder Forum (coordinated by EC – DG EMPL)
 - Formal **Liaison Group** of HLG to the SP on Families will be helpful to complement stakeholder/policy involvement





Outline of the *Social Platform on research for families and family policies*

Com muni cation

- 3 Conferences
- Website
- Online Journal
- Reports
- Text book

Disse mina tion

WP1: State of the Art Reports in existential fields

- Family Structures & Forms
- Family Development & Living Environments
- Family Organisation & Care needs
- Family Policies & Social Services
- Diversity and Inequalities

WP2: Critical Review of existing research on Families: Stakeholder & expert involvement (focus groups) on policy issues: *gender equality; work-life balance; services; migration*

WP3: Key policy questions and research issues future scenario development (max 5) on «Well-being of families and Social Policy in future EU» with stakeholders & policy

European Research Agenda

- Scientific
- Families
- Socio-political
- Economic

Perspe ctives

at

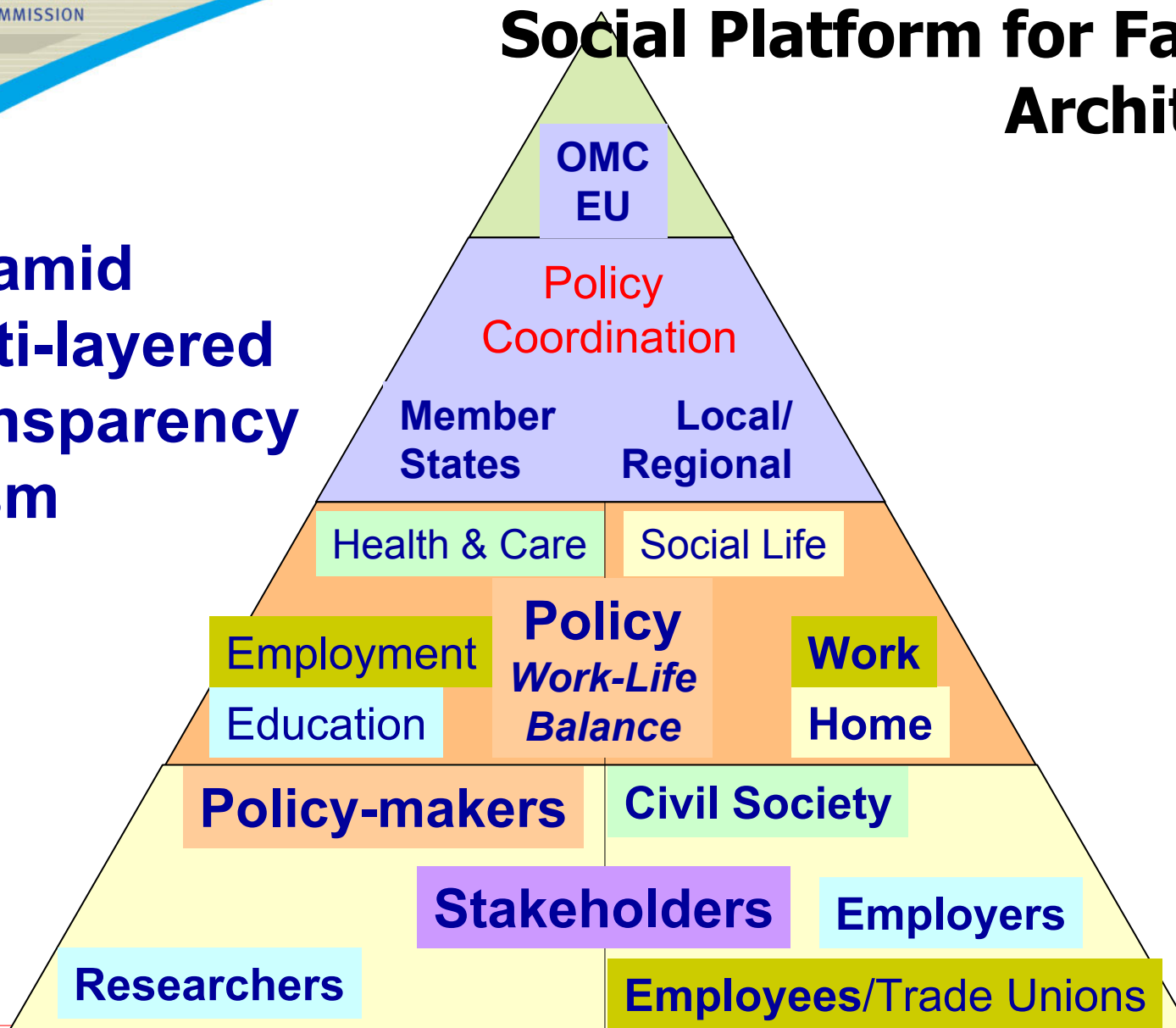
- EU/SSH
- National
- Regional
- Local

Levels



Social Platform for Families: Architecture

- Pyramid
- Multi-layered
- Transparency
- Prism





EUROPEAN COMMISSION

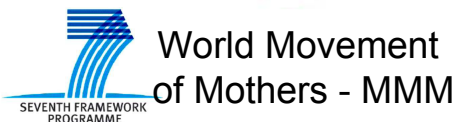
Community Research

Varied Civil Society Interests in the policies/research on Family/ies

Partners in Consortium



Confederation of Family Organisations in the EU



« External » Stakeholders – EU/int. level

- European Alliance for Families (official EU policy-makers)
- Alliance for Childhood European Network Group
- Gay and Lesbian Parents Association (APGL)
- Christian Action Research Education for Europe (CARE) – Eurochild - European Federation of Unpaid Parents and Careers at Home (FEFAF)
- International Planned Parenthood Federation European Network (IPPF EN)



Lesbian & Gay

« External » Stakeholders – national/local level

- Union Nationale des Associations Familiales (UNAF, FR)
- Association des parents d'enfants mentalement handicaps (LUX)
- One parent exchange and network (OPEN, IE)
- Union de centros de accion rural (UNCEAR, ES)
- SOS Children's Villages (LT)
- Association Protection of Unborn Life (CZ)



lone parents in IE



SINAPSE – e-communities

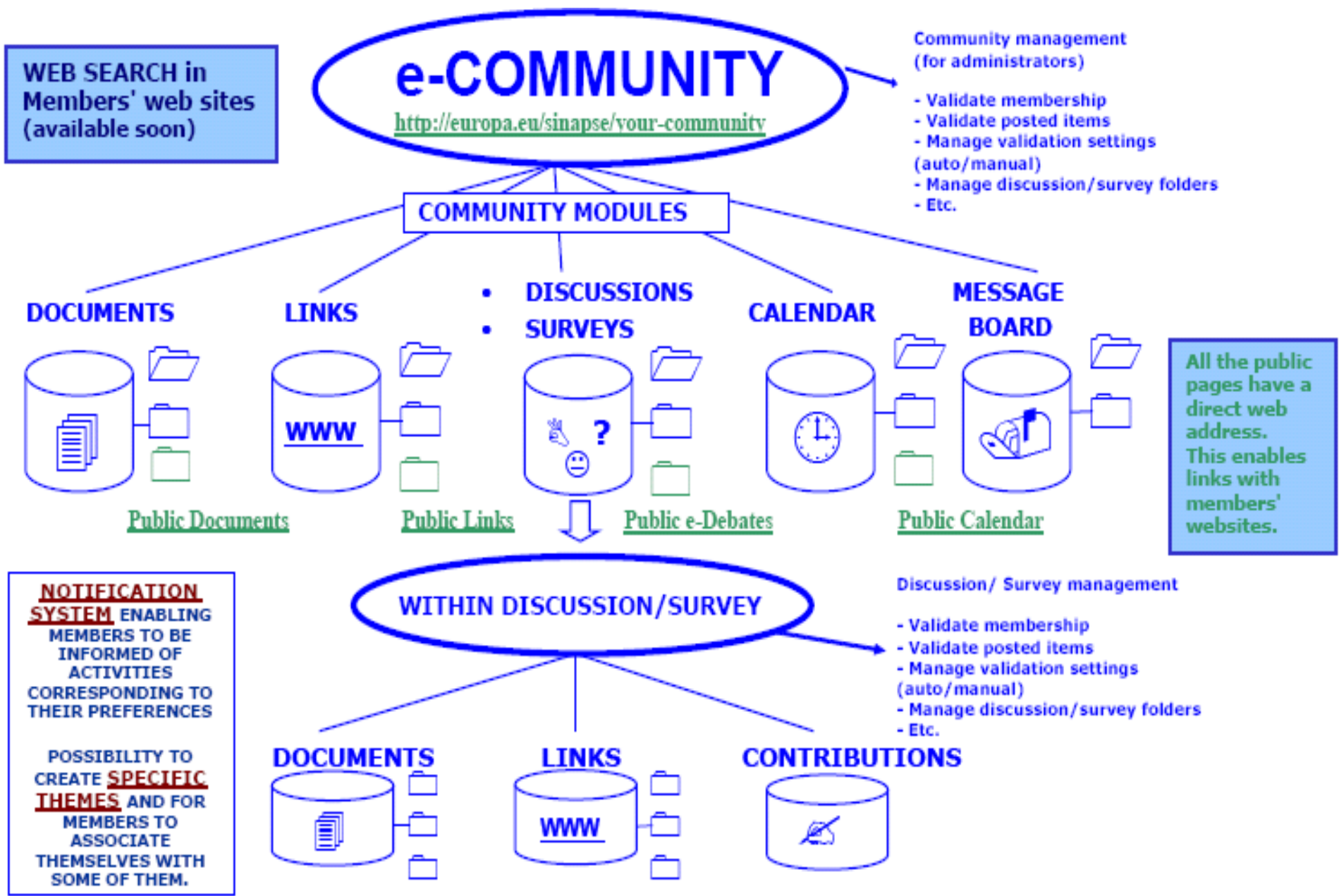
(supported by « Science in Society »)

SINAPSE is a **web-based communication platform**: essential tools to promote exchange of info between stakeholders.

- **thematic communities** who want to establish a **communication platform** for **members** with a **common expertise or interest**.
 - **library** of documents and of links
 - a **calendar** and a **message board** for the community.
 - possibility of launching discussions and surveys, incl. **public consultations/debates**.
- The SINAPSE e-community can be personalised and/or embedded in a regular website.
- Some of the information stored in the Community can be open to all Internet users by **creating public pages** (public library of documents/links, public calendar).



<http://europa.eu/sinapse/>



PROGRAMME