



Info Day “The Ocean of Tomorrow”
Brussels, September 9, 2010

*Research themes for the
sustainable exploitation of the oceans:
the INSEAN perspective*

Francesco Salvatore

INSEAN, Italian Ship Model Basin

Rome, Italy



INSEAN
Italian ship model basin

Partnership with INSEAN

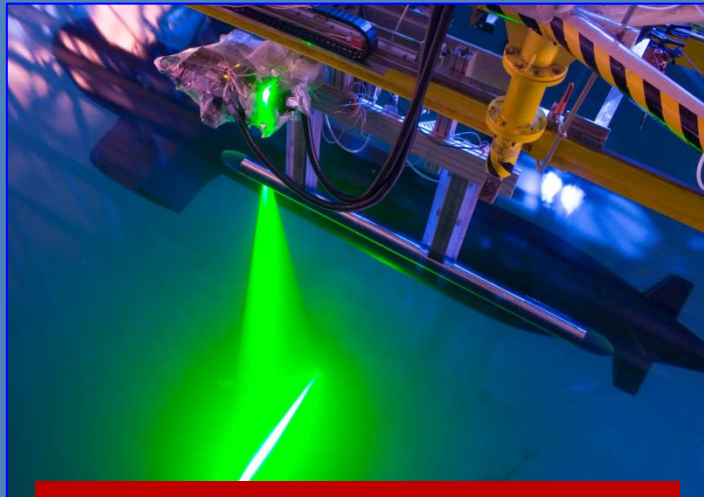
- INSEAN, the **Italian Maritime Engineering Research Center**
- Public body, established in Rome in 1927
- Research in **hydrodynamics** through:
 - ✓ *Model testing in large-scale facilities*
 - ✓ *Development of analysis/design models and software*
 - ✓ *Expertise on multi-disciplinary areas*
- Experience in RTD projects (10 ongoing under EU FP6-FP7)

Here: expression of interest for

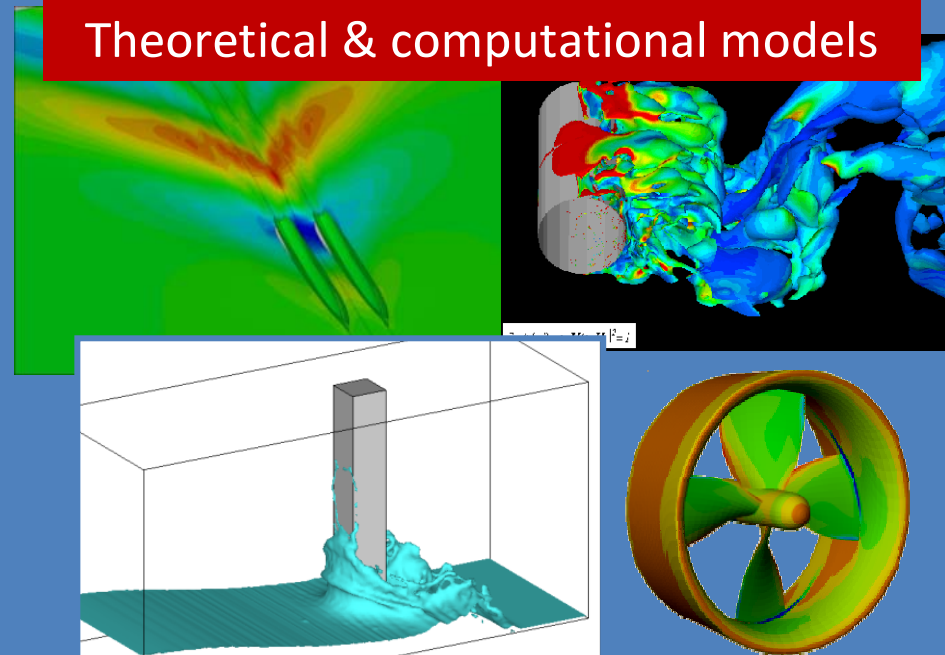
➤ Topic OCEAN.2011-1 – Multi-use offshore platforms

INSEAN: research tools

- World-class facilities like 2 towing tanks, 2 circulating water channels provide a **unique test-plant** for floating and submersible bodies
- Dimensions of facilities allow for testing of **very-large sized models**
- **State-of-art** equipment and techniques for analysis & design



LDV-PIV velocimetry
Digital-image processing



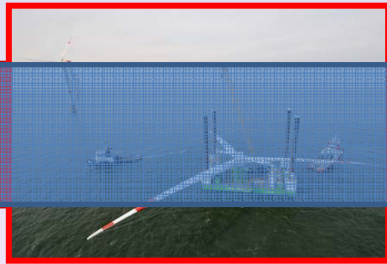
INSEAN: areas of interest



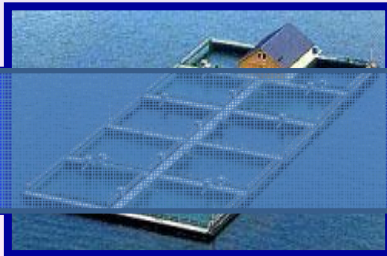
Green energy
Product. & storage)



Transports
(offshore terminals)



Platform
integration

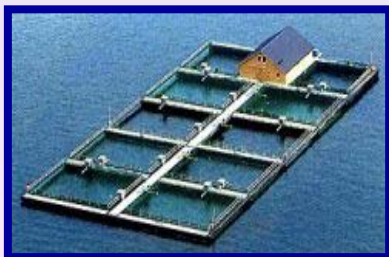


Aquaculture
(Fish farming)

R&D contributions by INSEAN on theme: **Aquaculture**

- Support to inter-disciplinary activities within the project

Partnership proposals



INSEAN is interested to join developing consortia for Topic OCEAN.2011-1 through:

- *Expertise in several branches of maritime engineering focused on OCEAN.2011-1 key-words*
- *Long-term experience in EU-funded R&D projects*
- *Active contribution to proposal preparation*

Contacts:

- Francesco Salvatore (f.salvatore@insean.it)
- Emilio Campana (e.campana@insean.it)