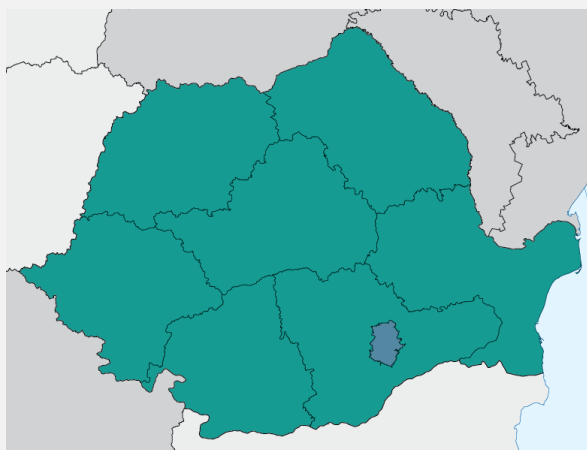


EUROPEAN STRUCTURAL AND INVESTMENT FUNDS¹



ROMANIA

With a budget of EUR 454 billion for 2014-2020, the European Structural and Investment Funds (ESI Funds) are the European Union's main investment policy tool. The ESI Funds combine five Funds: European Regional Development Fund (ERDF); European Social Fund (ESF); Cohesion Fund (CF); European Agricultural Fund for Rural Development (EAFRD); and the European Maritime and Fisheries Fund (EMFF). Romania, together with 19 other Member States, will also benefit from the Youth Employment Initiative (YEI).



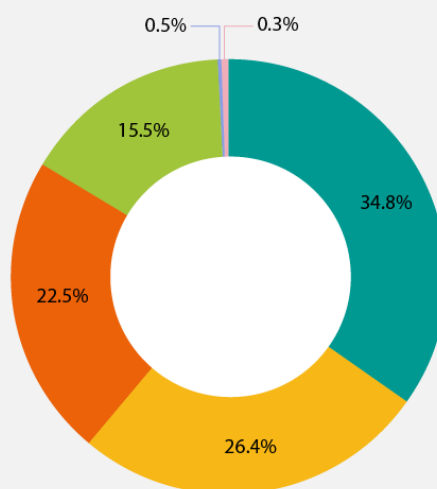
Categories of regions for the ERDF, ESF and EAFRD 2014-2020

- Less developed regions (GDP/head < 75% of EU-27 average)
- More developed regions (GDP/head >= 90% of EU-27 average)

Through eight national and regional programmes, Romania has been allocated **EUR 30.84 billion** from ESI Funds over the period 2014-2020. With a national contribution of **EUR 5.63 billion**, Romania has a total budget of **EUR 36.47 billion** to be invested in various areas, from creating jobs and growth to promoting innovation as well as protecting the environment and supporting social inclusion.

ESI FUNDS BUDGET FOR ROMANIA (2014-2020)

- EUR 10.73 billion through the ERDF
- EUR 6.93 billion through the CF
- EUR 8.13 billion through the EAFRD
- EUR 4.77 billion through the ESF
- EUR 168 million through the EMFF
- EUR 106 million through the YEI



¹ Data included in this factsheet have been extracted from the ESIF Open Data platform which is accessible online at <https://cohesiondata.ec.europa.eu/>. Data on target achievements are based on officially agreed common indicators or, for the ESF, programme specific indicators (reference date for data: November 2015).

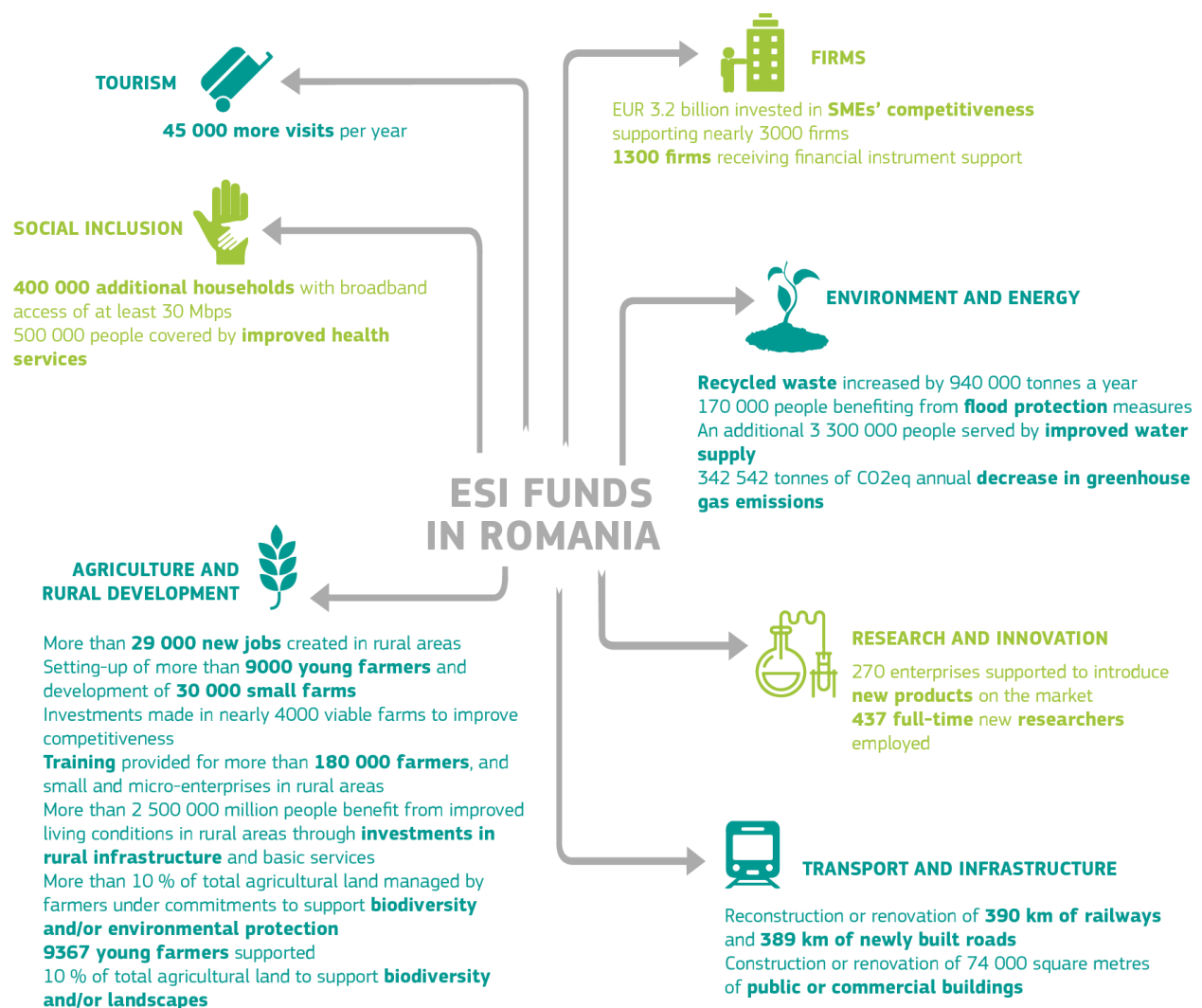
MAIN PRIORITIES

ESI FUNDS IN ROMANIA WILL:

- Improve the country's **competitiveness** by strengthening the links between research, innovation, smart specialisation areas and competitive sectors, and boosting technology transfer.
- Help to double added value in the IT sector (relative to GDP) and increase the number of users of **e-government systems**.
- Support **SMEs, farms and cooperatives**, and **fishery and aquaculture holdings** thereby contributing to modernisation, higher productivity and survival rates, and agricultural restructuring.
- Invest in **energy, climate change and resource efficiency**, with a focus on **environmental conservation** and protection.
- Invest in **TEN-T networks and transport accessibility**, upgrading kilometres of railways, new roads, and new metro lines and shortening average travel times.
- Increase **labour-market participation** to boost the employment rate, targeting **young people** not in employment, education or training, and other vulnerable groups.
- Promote **social inclusion** and **combat poverty and discrimination**, helping disadvantaged people (including Roma) to access the labour market and improve their health and social status.
- Reduce **early school leaving** and increase **participation in tertiary education**.
- Enhance the **institutional capacity** of **public authorities** supporting the reform of public administration and the effectiveness of the justice system.

TARGETS

All funds are designed to support Romania's **socio-economic development**. The expected results (**targets**) give an overall view of where Romania should be on key parameters by 2020.



HOW WILL ROMANIA ACHIEVE THE EXPECTED RESULTS?

Romania will work towards the efficient spending of the EU funds, based on a multidimensional approach.

FULFILLING PRECONDITIONS FOR THE EFFECTIVE AND EFFICIENT USE OF ESI FUNDS

To ensure that ESI Funds are used efficiently and focus on results, the Commission has set some preconditions when allocating ESI Funds to the Member States.

The main purpose of these conditions, also called 'ex-ante conditionalities', is to help all Member States and their regions to tackle issues that past experience has shown to be particularly relevant to the efficient implementation of the Funds. These principles could be linked, for example, to the implementation of EU legislation, the financing of strategic EU projects, or administrative evaluation and institutional capacity.

The *ex-ante* conditionalities cover most investment areas: improvements to regional research and innovation (R&I) strategies as well as strategic plans linked to environment protection, energy resources, transport, socio-economic inclusion, health services, education and training.

ENCOURAGING THE USE OF FINANCIAL INSTRUMENTS AND TERRITORIAL TOOLS

A significant proportion of the investment will be delivered through financial instruments, including the SME Initiative implemented by the European Investment Bank. The aim is to support SMEs, farms and energy efficiency by providing early- and growth-stage equity, loans and guarantees.

Support is envisaged for: sustainable urban development, the shift to a low-carbon economy, environmental protection, the regeneration of deprived communities, and improving education and training infrastructure. The Funds will implement integrated territorial investment in the Danube Delta, a territory with specific environmental and socio-economic challenges. Moreover, funding will also contribute to community-led local development for urban, rural and fisheries-dependent areas.

SIMPLIFICATION FOR BENEFICIARIES

Romania intends to: simplify guidelines for applicants and procurement procedures for private beneficiaries; improve public procurement legislation; use simplified cost options; simplify the procedures for building permits; and rationalise administrative procedures.

SUCCESS STORIES: EXAMPLES OF PROJECTS USING 2007-2013 ESI FUNDS

BETTER ENERGY SYSTEMS AND LEISURE FACILITIES AT TUDOR VLADIMIRESCU CAMPUS

Improvements to the electrical and heating systems, leisure and catering facilities at Gheorghe Asachi Technical University's Tudor Vladimirescu campus in Iasi represent an important contribution to social inclusion, jobs, education and training in north-eastern Romania. A total of 5070 students are using the upgraded facilities, and 12 dormitories have been renovated within this project. The energy efficiency achieved by the project has contributed to reducing the costs of student accommodation by almost 40 %.

Total budget: EUR 12 595 018

EU budget contribution to the project from ERDF: EUR 10 705 776

More information: <http://europa.eu/!GV86YX>

THOUSANDS TO ENJOY ENHANCED WATER SERVICES

A major improvement to water services will soon benefit more than 246 000 inhabitants in south-east Romania. The project will concentrate on investments in drinking-water treatment and distribution, and waste-water collection and treatment, including two treatment plants.

Total budget: EUR 95 750 000

EU budget contribution to the project from CF: EUR 73 890 000

More information: <http://europa.eu/!wc38vf>

LAUNCH PAD FOR SUCCESSFUL WOMEN ENTREPRENEURS

A multi-regional Romanian project developed the entrepreneurial skills of 400 women and enhanced their employability. Women from Bucharest, Giurgiu, Oradea and Slatina underwent an intensive course to prepare them better for the labour market and help them in any subsequent career. The training aimed at creating 20 partnerships and 320 start-ups, with as many as 250 SMEs making a profit within a year of activity.

Total budget: EUR 504 700

EU budget contribution to the project from ERDF and ESF: EUR 460 480

More information: <http://europa.eu/!FP84kq>

CAREER CARAVAN

ESF funding co-financed a 'career caravan' that visited 42 schools in four Romanian regions. The caravan provided information, personalised guidance and counselling to 12 000 upper secondary education students preparing to move to higher education or to the active life.

Total budget: EUR 4 600 000

EU budget contribution to the project from ESF: EUR 4 000 000

More information: <http://caravanacarierei.bns.ro/>

BAKING TRADITIONAL BREAD FOR THE LOCAL COMMUNITY

EAFRD support helped a bakery to extend and modernise its production capacity, providing traditional bread and bakery products for over 85 000 people in the rural areas of Cluj and Bistrita counties, in north-west Romania. Through the project, in which employment is an important component, 103 jobs have been created.

Total budget: EUR 2 647 068

EU budget contribution to the project from EAFRD: EUR 920 107

More information: <http://europa.eu/!dP74BY>

FIND OUT MORE ABOUT ESI FUNDS IN ROMANIA

- ESI Funds: <http://ec.europa.eu/esif>
- ESI Funds Open Data Platform: <https://cohesiondata.ec.europa.eu/countries/RO>
- ERDF & CF: http://ec.europa.eu/regional_policy/en/atlas/romania
- ESF: <http://ec.europa.eu/esf/main.jsp?catId=395&langId=en>
- EAFRD: http://ec.europa.eu/agriculture/rural-development-2014-2020/country-files/index_en.htm
- EMFF: http://ec.europa.eu/fisheries/cfp/emff/doc/op-romania-summary_en.pdf
- YEI: ec.europa.eu/social/BlobServlet?docId=13479&langId=en
- The EU Representation in Romania: http://ec.europa.eu/romania/index_ro.htm
- EU project examples: http://ec.europa.eu/budget/euprojects/search-projects/list_en
- Follow us on Twitter: @EU Regional @EU Social @EU Agri @EU Mare #ESIFunds