

5.4. Distribution of production aids between groups of farms

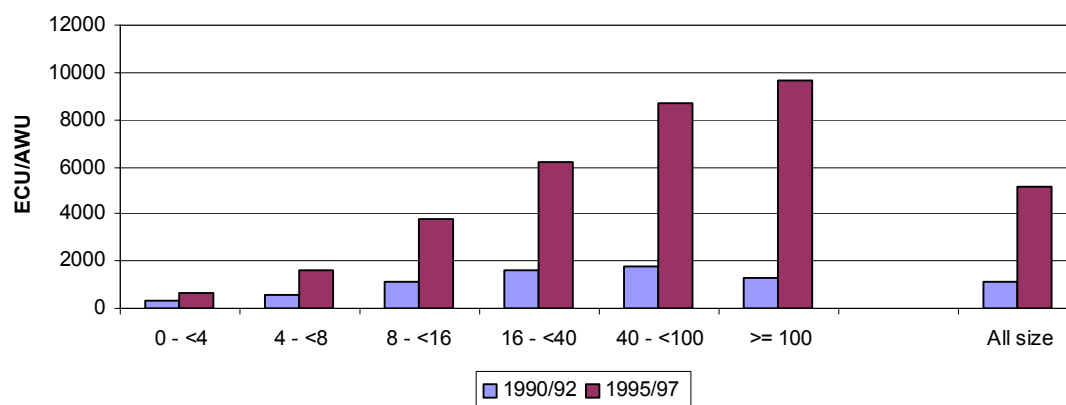
The decrease of the number of holdings and increases in their average size is one of the main features of modern agriculture in developed countries. Within EU, the picture is quite variegated, with some northern countries presenting high levels of physical and economic concentration of agricultural holdings, whilst in many southern regions agricultural structure is still characterised by small holdings.

Looking at the impact of the CAP price support by group of farms, classified by ESU (Economic Size Unit - FADN classification), we have to say that price support is mainly captured by those big and productive agricultural holdings, which concentrate the bulk of the EU agricultural output (OECD, 1999)¹. In other terms, we occur a circular causation: the process of economic concentration brings about inequalities in the distribution of price support, but price support positively affects the development of big farms.

In this section our empirical analysis is focused on the distribution of production subsidies² by farm group. Our calculations are based on data provided by FADN.

After the 1992 Reform we record a general increase in subsidies for all the farm groups, but the most remarkable increases have been occurred for farms of big sizes. Ratios of production subsidies to annual working units and utilised agricultural areas clearly show that farms of medium sizes – respectively between 8 and 40 ESU, and between 16 and 40 ESU – are characterised by significant values. Since the Mac Sharry, medium-big farms (between 40 and 100 ESU) and big farms (more than 100 ESU) have been receiving a big amount of production aids, with the consequence that the level of subsidies per AWU for big and big-medium farms is now higher than that of medium farms (graph 5.6 and 5.7).

Graph 5.6 Production subsidies per AWU by group of farms, classified by ESU
(Economic Size Unit - FADN classification)
[ECU/AWU at 1985 constant values]

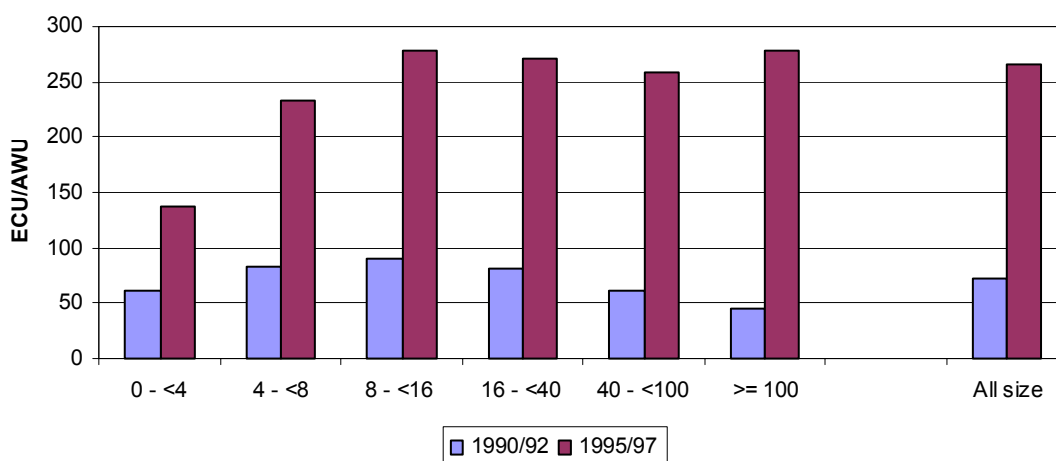


Source: our elaborations - FADN data

¹ OECD, 1999, Distributional Effects of Agricultural Support in Selected OECD Countries

² In evaluating the importance of subsidies by farm group, we do not consider any distinction between national and european subsidies. Data provided by FADN present “subsidies” as an aggregate which contains both national and european aids.

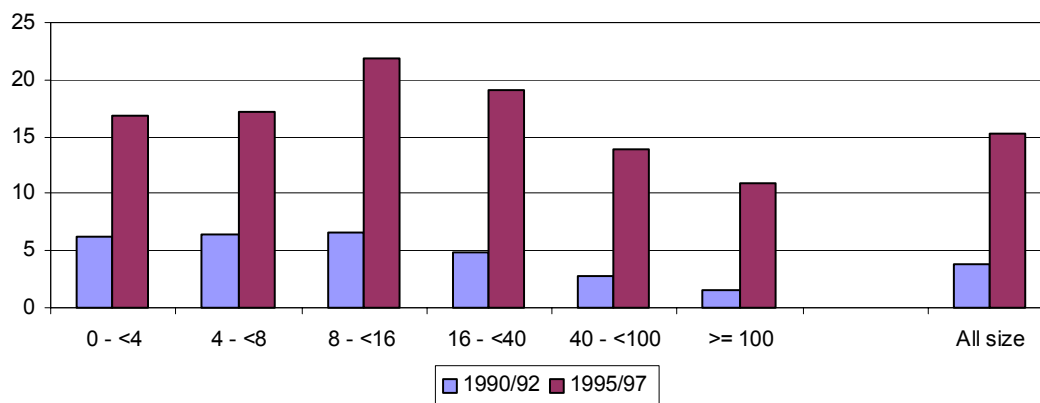
Graph 5.7 Production subsidies per UAA by group of farms, classified by ESU (Economic Size Unit - FADN classification)
[ECU/AWU at 1985 constant values]



Source: our elaborations - FADN data

At yet, big and medium-big farms are less dependent on support than medium and small ones (graph 5.8); this is partly due to the lower level of production recorded for small and small-medium farms.

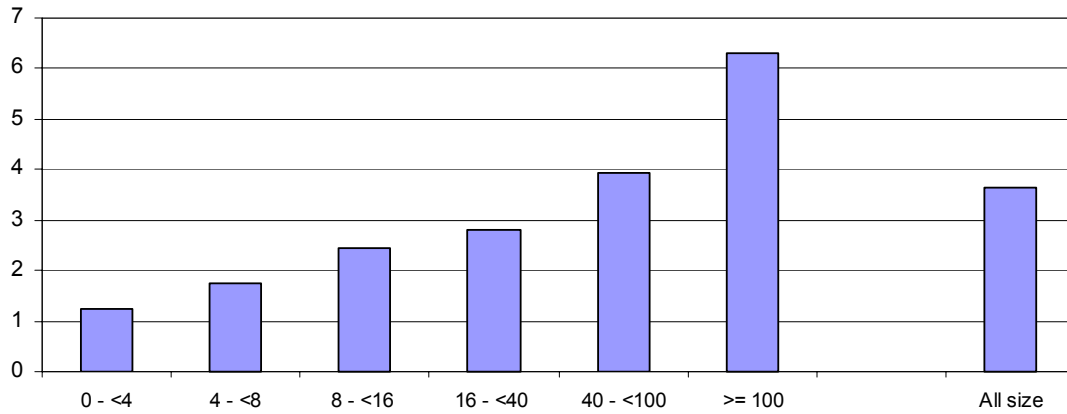
Graph 5.8 Degree of dependence on production subsidies by group of farms, classified by ESU (Economic Size Unit - FADN classification)
[ECU/AWU at 1985 constant values]



Source: our elaborations - FADN data

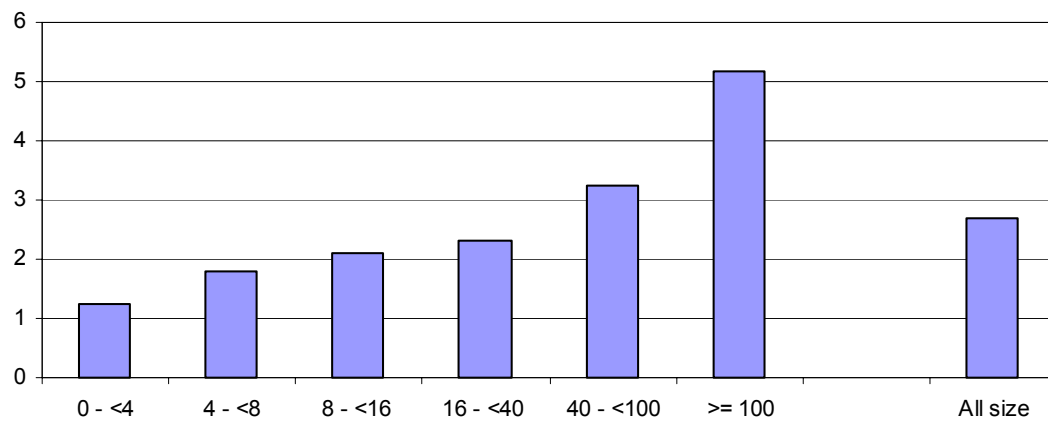
In reality, because of the introduction of 1992 direct payments, medium-big and big farms' share in production subsidies is increasing, whichever indicator we use. By calculating the rate of changes in our indicators between 1990/92 and 1995/97, we note that big farms have been the main beneficiaries of the reforms: the rate of changes of subsidies per AWU and per UAA present their highest values for big farms, at the second position come medium-big farms and so forth (graphs 5.9 and 5.10).

Graphs 5.9 Rate of change of production subsidies per AWU by farm group (ESU), 1990/92 - 1995/97



Source: our elaborations - FADN data

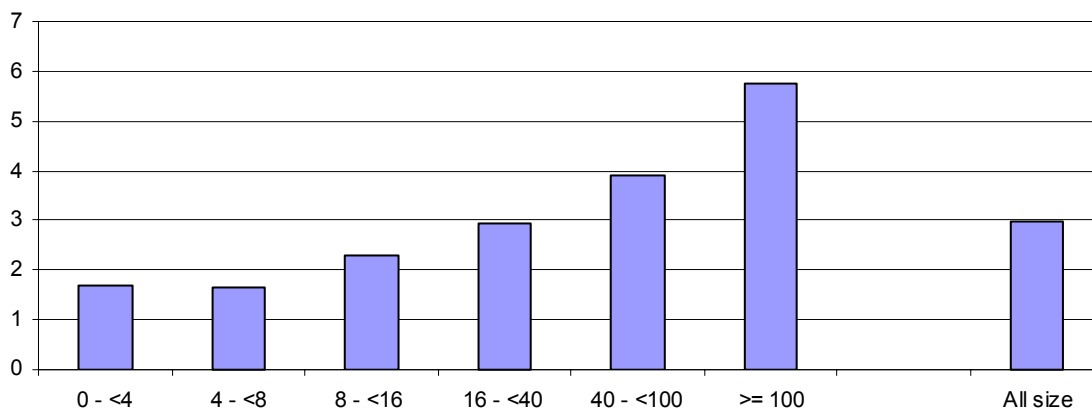
Graphs 5.10 Rate of change of production subsidies per UAA by farm group (ESU), 1990/92 - 1995/97



Source: our elaborations - FADN data

As for the evolution of the degree of dependence on subsidies, big farms have increased their dependence on subsidies at a very high rate. As already noted for other indicators, we see that the rate of change of the degree of dependence on subsidies is positively correlated with farm size. (graph 5.11).

Graphs 5.11 Rate of change of the degree of dependence on production subsidies by farm group (ESU), 1990/92 - 1995/97



Source: our elaborations - FADN data

From these results, we can deduce that public policy in agriculture still tends to concentrate support on big farms, even when the support measure is represented by direct payments rather than price support. We can say that CAP not only accompanies but also influences the development of large specialised units, to the detriment of small and medium-sized holdings.

Nevertheless, in several EU regions small farms still are a significant element of the local communities; small economic and physical sizes are often occurred in areas where agriculture is very important in terms of GDP and employment. Furthermore, small agricultural holdings play a very important role in maintaining both the land and the rural fabric. Whether policy makers still think that small agricultural holdings are potential subjects for policy actions, then a sectoral strategy would be inadequate and wider measures of rural development should be implemented.

5.5.Evaluation of the impacts of the CAP within the EU regions

This final section contains the main empirical results concerning the overall impact of the CAP at regional level. Our estimates take into account taxpayers, consumers and producers, and they are based on the formula used by Tarditi for the First Cohesion report (paragraph 5.1). In that case, Mac Sharry reform was still not fully implemented and data availability was a major constraint.

Unfortunately, Eurostat database still presents large discontinuities between countries and regions. For example, still miss regional data for greek regions for the years following 1991; for Netherlands, statistics on regional agriculture are not available from 1993 onwards. We have tried to overcome these constraints by combining regional data coming from national statistical offices, with information on the evolution of national agriculture.

We have implemented our calculations for three years: 1989, 1994 and 1996. The first year has been chosen as pre-Mac Sharry reference, 1994 has been chosen to compare our calculations with the Tarditi's ones; finally, we have selected 1996 because we do not have more updated data at regional level for many countries³.

Since 1992, four main elements have affected the redistribution of benefits and losses at regional level:

³ Regio Eurostat database contains 1997 data for Germany, Sweden and Portugal. Anyway, data for the majority of the other countries are not so updated (see appendix 3.C)

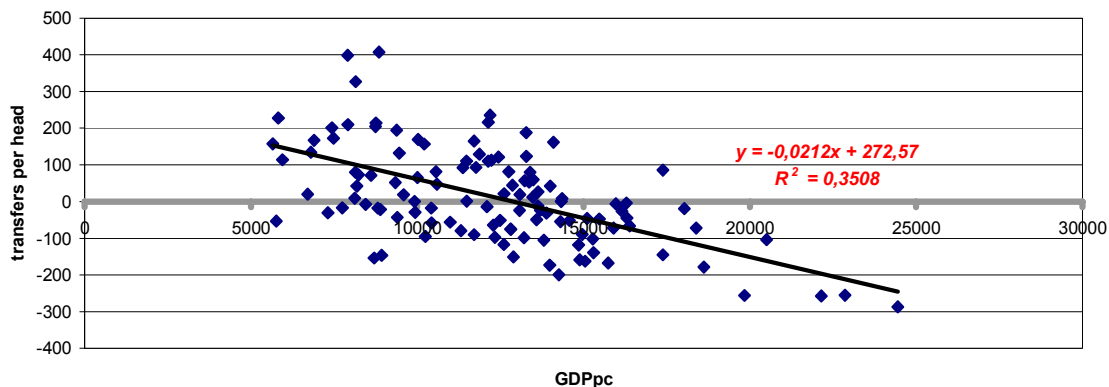
- (i) market price support has been decreasing after the Mac Sharry Reform and the conclusion of the Uruguay Round. As consequence, consumers' burden, originated by internal prices higher than the corresponding world ones, declined in all the regions. This has produced a favourable effect on final transfers for all the EU regions;
- (ii) on the other hand, the reduction in domestic prices implies also lower level of support to producers; this has negatively affected those farmers and those regions specialised in the production of highly protected commodities. In virtue of the fall in price support, total CAP support (price support plus direct income support) has declined in all the EU countries, but Ireland;
- (iii) the introduction of direct payments has offset the impact of price reductions in cereals and beef production. Farmers have been compensated by payments based on historical yields or animal numbers;
- (iv) CAP expenditure has not significantly changed in real terms.

The overall impacts of these four elements may be summarised as follows:

- (a) a general improvement in the welfare situation of the EU community; after 1992, “losing” countries lose less and “gaining” countries gain more (appendix 5.A);
- (b) over time, there are not clear signs of positive developments concerning the redistribution of CAP benefits and losses across EU. In other terms, we cannot safely say that lagging regions tend to gain more than more developed ones.

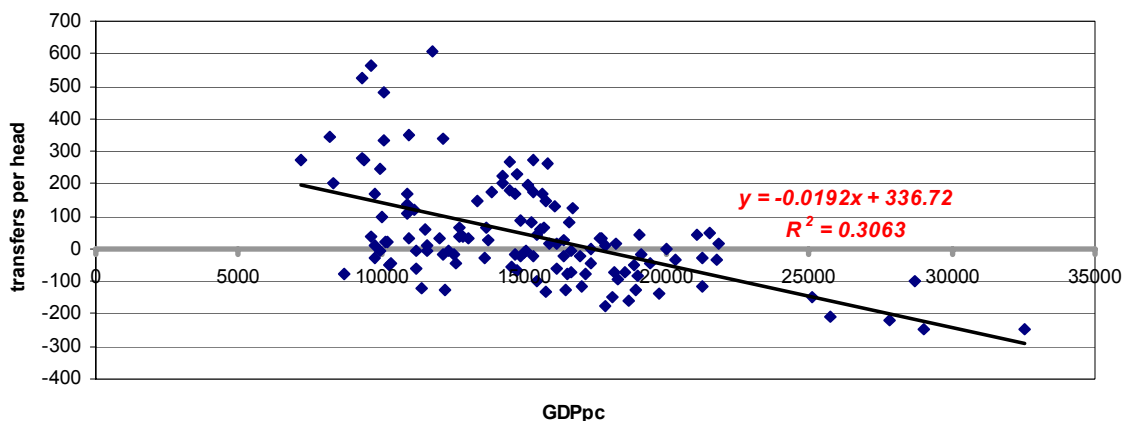
In 1996, like in 1989 and 1994, positive transfers per head were prevalently concentrated in regions where per capita GDP were below the EU average (Appendix 5.A). This implies that CAP support contributes to the pace of convergence of lagging regions. From 1989 to 1996, there is no evidence that the relationship between total transfers per head and per capita GDP has significantly changed (graphs 5.12, 5.13 and 5.14).

Graph 5.12 Relationship between per capita GDP (purchasing power parities) and transfers per head generated by the CAP (ECU mio at 1985 constant value) across the EU regions [1989]



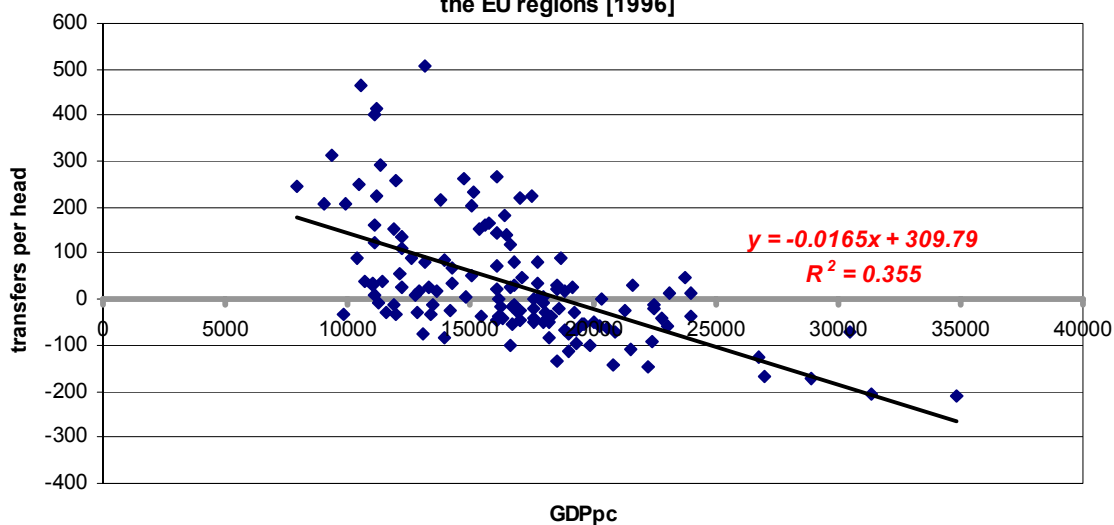
Source: our calculations - Eurostat data on per capita GDP

Graph 5.13 Relationship between per capita GDP (purchasing power parities) and transfers per head generated by the CAP (ECU mio at 1985 constant values) across the EU regions [1994]



Source: our calculations - Eurostat data on per capita GDP

Graph 5.14 Relationship between per capita GDP (purchasing power parities) and transfers per head generated by the CAP (ECU mio at 1985 constant values) across the EU regions [1996]



Source: our calculations - Eurostat data on per capita GDP

The relative fall in consumers' over-expenditure determines a general improvement but does not affect directly the redistribution of CAP benefits and losses within the EU regions. In fact, in our

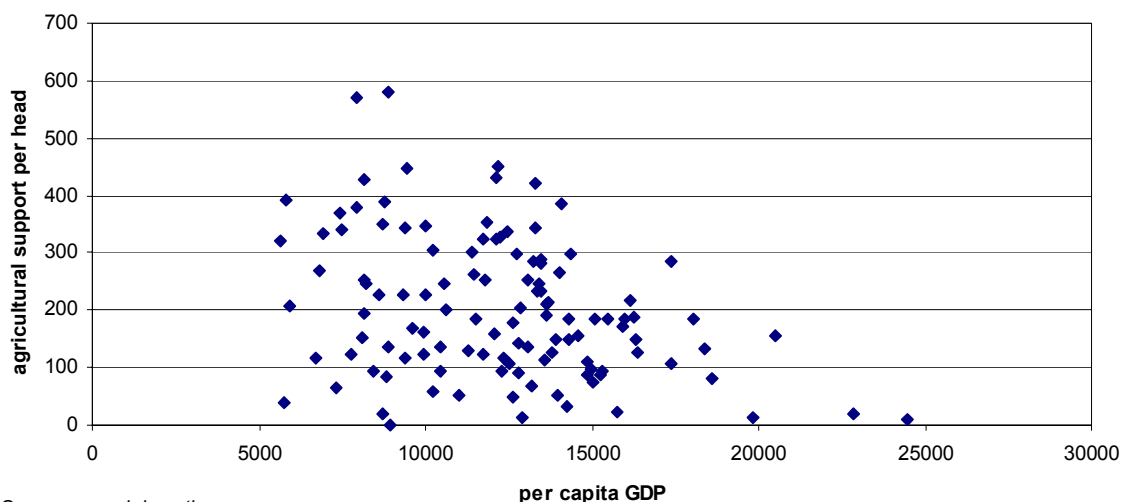
model we assume equal levels of per capita consumption for each region of a country; consequently, the rate of decrease in consumers' burdens is quite even within the EU.

Relative variations in transfers from taxpayers by region are relatively low. Thus, they cannot produce significant changes for the redistribution of CAP benefits and losses.

We have not recorded remarkable improvements from a redistributive point of view also because the 1992 Reform has not produced important changes in the allocation of total CAP support to the agricultural sector at territorial level. In paragraph 5.2, we have seen that the effects of the Mac Sharry within the agricultural sector are ambiguous: the positive relationship between total support per AWU and the GVamp per AWU becomes less steep, but also less regular.

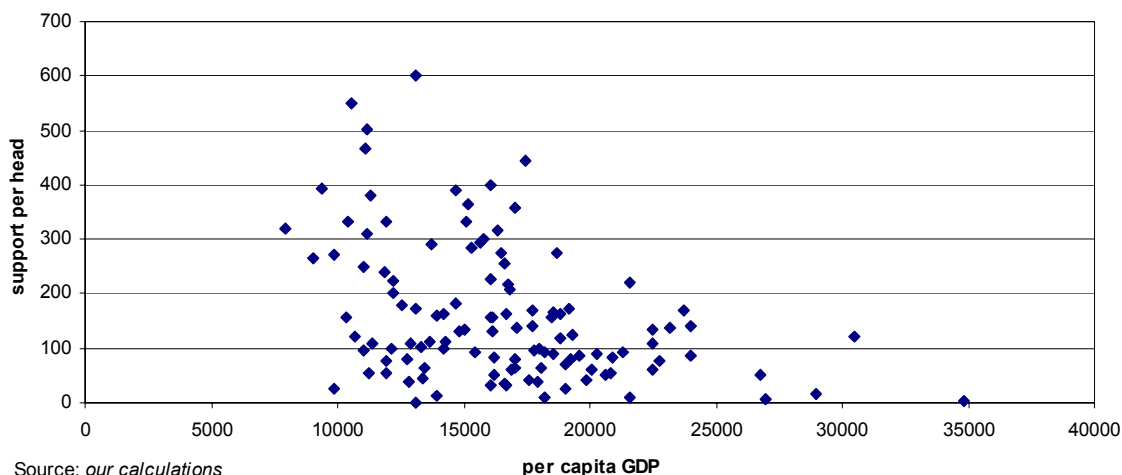
By abandoning the sectoral perspective, we have calculated the ratio of total CAP support to the agricultural sector to total population at regional level. The relationship between transfers to the agricultural sector per head and per capita GDP shows a slight negative relationship (graphs 5.15 and 5.16), that is to say support per head is higher for regions having lower per capita GDP, thereby enhancing the process of convergence. However, despite the 1992 Mac Sharry Reform, there have not been consistent developments of this relationship since 1989.

Graph 5.15 Relationship between CAP support to the agricultural sector per head (mio ECU at 1985 prices) and per capita GDP - EU regions (purchasing power parities) [1989]



Source: our elaborations

Graph 5.16 Relationship between CAP total support to the agricultural sector per head (mio ECU at 1985 prices) and per capita GDP - EU regions (purchasing power parities) [1996]



Source: our calculations

From 1989 to 1996, CAP support to the agricultural sector has decreased for almost all the EU countries; the most remarkable falls have been occurred for Netherlands and Belgium, but also Italy, UK, Germany. These countries are “losers”.

For France, Greece, and Spain the decline in CAP support is slighter; furthermore, within these countries, we note many regions with an increase in total CAP support; Ireland is the only country for which we record clearly an increase in CAP support to producers from 1989 to 1996. Ireland, together with countries of the previous group and Denmark, is a net “gainer”.

Portugal was a net “gainer” in 1996, but as seen in paragraph 2.3, its position is reversed if we consider the following years.

As concerns the new Member States, Austria and Finland, as Portugal, were net gainer in 1996. These countries received a big amount of subsidies after the accession, but their position turned to be negative from 1996 onwards (see paragraph 2.3); Sweden is losing because of its high budgetary contribution.

The introduction of direct payments has brought about significant shifts mainly for Spain and France, that is to say for a cohesion country and a rich country.

In Spain, like in France, the introduction of direct payments has determined an increase in CAP transfers for almost all the regions. Both countries have turned to be gainers after 1992.

In Spain, the highest gains are recorded for the central part of the country, where it is concentrated the production of seminatives: Castilla, Extremadura, Aragon. In terms of total transfers per head, these regions are among the main beneficiaries within EU (maps 5.7a, 5.7b and 5.7c). Urbanised areas are net losers: Madrid, Cataluna, Pais Vasco, Comunidad Valenciana and Baleares (Appendix 5.A).

In France, southern regions, like Provence, Alpes and Cote d’Azur, generally lose. The loss for Ile de France has declined after the Mac Sharry; the most significant gains are occurred in regions which are traditional producers of cereals. Bretagne is still a gainer but its relative position is worsened for the region has not got significant benefits from the 1992 changes. After the Mac Sharry, many french region have strenghtened their relative positions, thereby ranking in the group of the main beneficiaries of the implementation of the CAP.

In Germany, the situation in the former DDR regions is remarkably different from that of the rest of the country. These regions are generally gainers in virtue of low average GDP and larger importance of agriculture in the regional economy. The only western gainer region is Niedersachsen, because of the considerable weight of agriculture in the economy of this region.

As concerns UK, we note that those regions, which generally obtain positive effects from the CAP, have seen their gains decreasing (Wales, Scotland, Northern Ireland and East Anglia), whilst for some losing regions the situation is improving.

In Italy, southern regions are generally gainers, but Sicily and Campania. These two regions are relatively highly populated and, because of the composition of regional FAP, they are not significant recipients of CAP support. For some northern and central regions, the movement is positive, whereas there is a negative trend for Emilia Romagna, Veneto, Marche and Umbria.

Almost all greek regions benefit from the CAP. Only Attiki is a net loser, given its concentration of urban inhabitants and non-agricultural economy. Among the top EU regions with the highest levels of transfers per head, we find many greek regions.

The CAP operates also in a positive way for some portuguese regions, notably Alentejo and Acores, though the country as whole is not gaining from the CAP (maps 5.7).

Finally, Belgium and Netherlands are the only countries for which we record lower transfers generated by the CAP after 1992. In both countries, the regions which have most benefited from the 1992 changes are the capital regions, which also present the highest level of per capita GDP.

Table 5.A Major components in total transfers generated by the CAP across the EU regions [mio ECU at 1985 con

	transfers to the agricultural sector from taxpayers			transfers from consumers			total transfers to the agricultural sector			1989
	1989	1994	1996	1989	1994	1996	1989	1994	1996	
<i>be Belgium</i>	965.0	1029.1	1022.7	1066.3	898.8	511.5	1489.0	1408.2	922.5	-542.5
be1 Région Bruxelles	145.5	148.5	147.5	104.2	84.5	47.8				-249.5
be2 Vlaams Gewest	566.9	612.9	609.9	614.6	520.3	296.5	886.3	886.3	492.0	-295.5
be3 Région Wallonne	252.7	267.6	265.3	347.4	294.1	167.1	602.7	521.9	430.6	2.0
<i>dk Denmark</i>	473.3	472.7	508.9	1008.8	843.7	502.4	1525.3	1553.4	1161.4	43.0
<i>Germany</i>	6036.6	7791.1	7711.6	8984.2	6697.7	3700.7	10595.1	8733.5	7074.0	-4423.5
de1 Baden-Württemberg	1010.8	1126.5	1115.0	1373.2	842.7	466.8	1015.5	803.4	637.3	-1368.5
de2 Bayern	1096.8	1307.6	1297.6	1608.5	976.9	542.5	2413.3	1967.7	1617.1	-292.5
de3 Berlin		320.9	307.7		286.2	157.0		4.0	2.4	
de4 Brandenburg		144.0	147.8		209.0	115.0		436.8	400.2	
de5 Bremen	80.9	90.6	87.9	96.4	56.2	30.7	7.7	5.6	4.1	-169.5
de6 Hamburg	240.8	286.6	285.7	233.4	140.2	77.3	14.0	10.9	7.3	-460.5
de7 Hessen	638.0	774.5	773.6	810.7	491.4	271.8	456.8	379.3	300.1	-991.5
de8 Mecklenburg-Vorpommern		95.4	96.8		151.8	82.5		432.2	407.6	
de9 Niedersachsen	595.5	700.4	692.8	1045.9	629.8	351.9	2073.3	1569.4	1213.1	431.0
dea Nordrhein-Westfalen	1560.7	1738.5	1707.5	2456.4	1462.4	809.3	1279.1	997.1	719.4	-2738.5
deb Rheinland-Pfalz	310.0	338.4	326.4	531.8	323.3	179.9	457.9	381.1	317.1	-383.5
dec Saarland	92.2	101.3	98.9	153.5	89.3	49.0	35.7	28.7	27.0	-209.5
ded Sachsen		244.1	253.4		379.4	206.6		404.4	332.9	
dee Sachsen-Anhalt		145.3	144.2		228.7	123.9		434.5	365.5	
def Schleswig-Holstein	208.4	247.2	243.6	373.3	221.9	123.3	727.8	556.6	454.0	146.0
deg Thüringen		129.9	132.8		208.6	113.3		321.6	268.8	
<i>gr Greece</i>	307.7	361.8	411.2	1421.7	1089.8	532.0	2461.8	2886.6	2348.6	732.0
gr11 Anatoliki Makedonia, Thraki	15.3	17.5	19.9	78.5	58.8	28.5	205.4	171.2	139.3	111.0
gr12 Kentriki Makedonia	50.5	61.2	69.6	235.3	183.6	90.1	419.3	440.7	358.5	133.0
gr13 Dytiki Makedonia	9.4	9.5	10.8	41.0	31.5	15.3	112.3	115.4	93.9	62.0
gr14 Thessalia	21.4	23.8	27.0	103.1	77.6	37.7	277.6	346.7	282.1	153.0
gr21 Ipeiros	7.1	8.2	9.4	46.6	37.6	18.6	128.7	144.7	117.7	75.0
gr22 Ionia Nisia	5.2	6.3	7.2	26.2	20.6	10.1	63.5	122.0	99.2	32.0
gr23 Dytiki Ellada	17.8	21.6	24.6	98.7	75.9	37.2	233.2	299.1	243.3	116.0
gr24 Sterea Ellada	20.7	22.2	25.2	78.8	66.5	33.7	193.9	195.5	159.1	94.0
gr25 Peloponnisos	17.2	20.0	22.7	83.1	68.0	34.2	334.4	454.0	369.4	234.0
gr3 Attiki	113.2	135.5	153.9	494.2	365.1	175.4	70.4	59.4	48.3	-537.0
gr41 Voreio Aigaio	4.0	4.9	5.5	27.2	19.7	9.4	61.5	89.2	72.5	30.0
gr42 Notio Aigaio	8.6	10.3	11.7	34.6	27.4	13.6	55.9	36.5	29.7	12.0
gr43 Kriti	17.4	20.7	23.6	74.4	57.6	28.4	305.8	412.5	335.6	214.0
<i>es Spain</i>	1942.5	1720.4	1689.9	4020.1	3326.1	1404.5	5283.4	6245.7	4446.9	-679.5
es11 Galicia	109.3	93.8	93.4	290.8	232.2	97.5	424.9	379.0	293.3	24.0
es12 Principado de Asturias	53.8	44.3	43.3	117.0	92.2	38.4	137.5	116.8	109.7	-33.0
es13 Cantabria	26.7	22.5	21.9	54.5	44.8	18.8	106.3	87.3	84.8	25.0
es21 Pais Vasco	128.5	108.4	104.7	220.1	177.5	74.2	100.0	83.0	66.7	-248.0
es22 Comunidad Foral de Navarra	33.4	28.0	27.6	53.9	44.5	18.8	129.0	140.0	89.0	41.0
es23 La Rioja	14.7	13.2	12.8	27.0	22.2	9.3	66.1	58.1	40.8	24.0
es24 Aragón	68.2	58.8	57.1	125.9	100.8	42.3	394.8	430.5	267.8	200.0
es3 Comunidad de Madrid	300.3	274.7	273.3	502.0	424.9	179.4	70.2	65.3	41.6	-732.0
es41 Castilla y León	118.2	102.7	103.0	272.3	214.7	89.9	903.0	1169.9	730.7	512.0
es42 Castilla-la Mancha	71.7	62.1	61.1	177.1	142.5	60.5	599.5	794.3	559.3	350.0
es43 Extremadura	36.7	33.5	31.6	116.5	90.8	38.4	304.5	418.3	291.9	151.0

Table 5.A Major components in total transfers generated by the CAP across the EU regions [mio ECU at 1985 con

	transfers to the agricultural sector from taxpayers			transfers from consumers			total transfers to the agricultural sector			1989
	1989	1994	1996	1989	1994	1996	1989	1994	1996	
es51 Cataluña	368.7	328.6	326.4	620.7	516.2	217.1	537.1	473.2	231.3	-452
es52 Comunidad Valenciana	188.9	166.0	160.2	390.8	330.6	139.9	359.8	421.2	178.0	-219
es53 Baleares	43.1	41.0	40.0	70.4	61.2	26.0	46.1	46.0	29.5	-67
es61 Andalucía	255.6	230.3	224.1	710.8	599.3	254.6	848.8	1113.4	1116.7	-117
es62 Murcia	46.9	41.7	39.9	105.4	90.8	38.7	171.1	195.6	106.1	18
es63 Ceuta y Melilla (ES)	5.3	4.8	5.0	12.8	11.0	4.7				
es7 Canarias (ES)	72.4	66.0	64.7	152.3	129.9	55.7	85.0	125.8	99.3	-139
<i>fr France</i>	4685.0	4576.6	4618.7	8297.3	6706.7	3895.0	10403.5	11816.8	9463.0	-2578
fr1 Île de France	1332.7	1350.1	1344.3	1557.6	1272.8	737.2	193.3	236.8	171.1	-2697
fr21 Champagne-Ardenne	104.4	95.0	96.9	198.8	156.9	90.4	521.8	603.3	482.8	218
fr22 Picardie	123.4	118.9	120.4	265.4	215.7	124.6	607.6	664.8	530.1	218
fr23 Haute-Normandie	147.3	143.4	143.8	254.5	205.2	119.1	319.6	372.8	307.9	-82
fr24 Centre	181.8	169.2	170.6	347.3	280.0	163.3	628.5	806.5	623.0	99
fr25 Basse-Normandie	92.6	95.9	96.1	204.4	163.5	94.7	597.2	646.3	566.2	300
fr26 Bourgogne	119.0	110.1	111.9	237.1	187.2	108.6	453.5	581.5	515.7	97
fr3 Nord - Pas-de-Calais	268.8	258.2	260.5	584.3	463.0	267.5	467.4	494.2	375.5	-385
fr41 Lorraine	162.5	154.5	156.1	340.5	266.4	154.6	330.6	403.9	363.8	-172
fr42 Alsace	136.2	136.6	136.7	238.2	192.9	113.8	149.8	171.9	122.2	-224
fr43 Franche-Comté	81.2	77.3	78.8	161.7	128.9	74.6	256.1	275.8	243.3	13
fr51 Pays de la Loire	222.7	216.7	219.5	448.5	363.6	211.0	1045.8	1109.7	870.6	374
fr52 Bretagne	186.9	182.8	188.6	410.3	329.1	191.3	1252.4	1273.1	842.4	655
fr53 Poitou-Charentes	107.1	101.8	103.1	234.7	188.6	108.5	521.2	655.4	539.0	179
fr61 Aquitaine	208.6	196.7	203.0	409.2	331.6	192.4	584.0	649.3	471.3	-33
fr62 Midi-Pyrénées	169.7	162.1	166.8	356.0	288.0	167.5	722.5	873.5	749.0	196
fr63 Limousin	45.3	44.3	44.4	106.9	83.4	48.0	219.2	253.1	280.3	67
fr71 Rhône-Alpes	434.5	422.9	430.2	781.6	640.9	374.9	587.3	628.1	515.0	-628
fr72 Auvergne	88.3	83.2	83.8	195.2	152.6	87.9	429.7	499.5	478.7	146
fr81 Languedoc-Roussillon	130.5	133.2	134.4	307.4	255.7	150.0	272.4	322.3	225.1	-165
fr82 Provence-Alpes-Côte d'Azur	325.4	307.9	312.6	621.1	511.2	297.7	217.3	243.6	155.4	-729
fr83 Corse	16.0	15.8	16.3	36.6	29.5	17.4	30.3	51.4	34.5	-22
<i>ie Ireland</i>	201.5	233.0	253.4	900.4	719.5	545.6	1566.9	1648.1	1603.8	465
<i>it Italy</i>	4132.5	2829.5	3347.7	6139.3	5283.7	2842.8	8493.9	6944.4	5106.0	-1777
it11 Piemonte	367.7	240.0	286.6	469.7	398.2	212.7	644.2	576.8	397.0	-193
it12 Valle d'Aosta	10.7	7.5	8.9	12.3	10.9	5.9	20.9	20.0	20.2	-2
it13 Liguria	141.1	95.9	112.0	184.9	153.8	82.2	40.6	18.0	14.0	-285
it2 Lombardia	846.6	564.9	673.1	956.8	823.1	442.5	1166.4	1098.0	770.5	-637
it31 Trentino-Alto Adige	74.5	55.8	66.6	95.4	83.6	45.3	166.2	180.4	124.3	-3
it32 Veneto	362.0	258.0	313.9	472.5	408.3	219.8	806.5	668.5	474.7	-27
it33 Friuli-Venezia Giulia	102.0	70.7	84.9	130.3	110.3	58.9	152.9	143.2	92.5	-79
it4 Emilia-Romagna	352.5	246.1	296.4	422.8	362.9	194.6	1109.5	807.9	546.3	334
it51 Toscana	275.6	187.0	221.7	383.5	326.3	174.7	344.0	266.5	216.7	-315
it52 Umbria	56.6	39.2	46.0	87.7	75.8	41.0	187.6	136.4	117.2	43
it53 Marche	105.9	72.7	87.4	154.0	133.0	71.6	260.5	202.3	117.3	0
it6 Lazio	407.8	287.0	337.0	552.5	479.5	257.9	443.5	344.7	266.2	-516
it71 Abruzzo	79.1	55.1	64.8	134.4	116.8	63.0	195.6	142.5	106.0	-17
it72 Molise	18.3	12.4	14.8	35.8	30.7	16.4	81.1	55.7	53.8	27
it8 Campania	281.5	187.5	216.1	606.0	527.9	285.7	648.7	359.9	320.1	-238
it91 Puglia	208.5	143.0	165.0	433.8	376.0	202.4	643.1	652.8	439.8	0
it92 Basilicata	27.7	19.9	24.0	66.2	56.5	30.2	137.6	148.6	108.8	43
it93 Calabria	91.1	59.3	69.8	225.7	192.3	102.9	404.8	198.2	251.1	88

Table 5.A Major components in total transfers generated by the CAP across the EU regions [mio ECU at 1985 con

	transfers to the agricultural sector from taxpayers			transfers from consumers			total transfers to the agricultural sector			1989
	1989	1994	1996	1989	1994	1996	1989	1994	1996	
<i>ita Sicilia</i>	237.6	165.9	190.4	537.9	464.7	252.6	670.0	597.6	383.5	-105
<i>itb Sardegna</i>	85.7	61.5	68.5	177.2	153.3	82.3	370.3	326.4	286.1	107
<i>lu Luxembourg</i>	56.5	60.3	59.7	40.3	35.7	20.8	57.8	55.6	50.6	-38
<i>nl Netherlands</i>	1467.2	1548.3	1649.0	2044.1	1864.1	1281.3	3162.5	2744.0	1914.4	-348
<i>nl1 Noord-Nederland</i>	152.6	157.5	167.5	220.0	196.2	134.6	672.5	557.2	449.7	299
<i>nl2 Oost-Nederland</i>	258.9	280.6	296.9	415.9	382.7	264.9	1064.4	913.8	660.5	389
<i>nl3 West-Nederland</i>	745.8	781.6	829.5	956.3	873.7	598.7	600.1	526.1	383.6	-1102
<i>nl4 Zuid-Nederland</i>	309.9	328.6	355.2	451.8	411.3	283.2	825.4	717.3	407.7	63
<i>at Austria</i>			696.7			451.2			1166.7	
<i>at1 Ostösterreich</i>			332.9			189.8				
<i>at2 Südösterreich</i>			123.0			99.2				
<i>at3 Westösterreich</i>			240.9			162.2				
<i>pt Portugal</i>	249.0	443.3	316.6	782.3	745.8	357.2	954.5	1138.7	786.6	-76
<i>pt11 Norte</i>	75.8	139.6	99.4	275.4	264.3	127.1	238.4	246.1	194.9	-112
<i>pt12 Centro (P)</i>	34.7	64.6	47.0	135.4	129.3	61.6	205.7	211.8	161.4	35
<i>pt13 Lisboa e Vale do Tejo</i>	107.6	188.2	132.8	262.4	248.9	119.2	176.7	215.7	101.2	-193
<i>pt14 Alentejo</i>	13.4	19.1	14.4	43.1	40.2	18.9	241.8	337.8	244.6	185
<i>pt15 Algarve</i>	8.8	15.4	11.1	26.0	25.9	12.4	28.8	45.5	13.4	-6
<i>pt2 Açores (PT)</i>	4.3	7.7	5.4	19.3	18.0	8.7	52.5	73.5	64.3	28
<i>pt3 Madeira (PT)</i>	4.4	8.6	6.3	20.7	19.3	9.3	10.6	8.2	6.7	-14
<i>fi Finland</i>			358.4			322.3			691.9	
<i>fi13 Itä-Suomi</i>			37.6			44.4				
<i>fi14 Väli-Suomi</i>			42.3			44.5				
<i>fi15 Pohjois-Suomi</i>			33.3			35.1				
<i>fi16 Uusimaa (suuralue)</i>			123.5			100.0				
<i>fi17 Etelä-Suomi</i>			119.5			96.7				
<i>fi2 Åland</i>			2.2			1.6				
<i>se Sweden</i>			732.1			475.1			864.1	
<i>se01 Stockholm</i>			174.9			92.8			17.1	
<i>se02 Östra Mellansverige</i>			113.4			80.7			170.2	
<i>se04 Sydsverige</i>			96.2			68.0			151.9	
<i>se06 Norra Mellansverige</i>			68.3			46.4			77.8	
<i>se07 Mellersta Norrland</i>			31.9			21.2			49.8	
<i>se08 Övre Norrland</i>			41.7			28.3			59.9	
<i>uk United Kingdom</i>	3568.6	2340.1	3055.5	5765.2	4252.8	2317.7	6516.0	5400.5	3665.2	-2817
<i>ukc North East</i>	135.4	89.0	114.5	260.4	190.5	102.7				
<i>ukd North West (including Merseyside)</i>	393.2	253.5	325.3	692.2	503.6	272.2				
<i>uke Yorkshire and The Humber</i>	278.5	180.6	234.4	497.0	366.2	198.7	460.2	450.6	250.5	-315
<i>ukf East Midlands</i>	240.0	159.0	203.0	402.0	298.6	163.1	546.6	518.8	266.4	-95
<i>ukg West Midlands</i>	299.0	198.1	258.6	525.7	386.1	209.7	557.3	453.7	322.2	-267
<i>ukh1 East Anglia</i>	127.9	85.1	111.0	205.7	153.2	84.2	387.3	405.0	208.5	53
<i>ukh2 Bedfordshire, Hertfordshire</i>	98.6	63.1	83.3	153.1	112.6	61.6				
<i>ukh3 Essex</i>	83.9	54.0	72.0	154.4	114.2	62.4				
<i>uki London</i>		397.4	517.2							

	transfers to the agricultural sector from taxpayers			transfers from consumers			total transfers to the agricultural sector			1989
	1989	1994	1996	1989	1994	1996	1989	1994	1996	
ukj South East	479.7	324.2	439.0	763.6	566.2	310.7				
ukk South West	274.6	182.4	238.4	468.4	348.9	190.8	949.1	813.6	664.9	206
ukl Wales	151.4	97.5	126.2	289.0	212.3	115.2	756.1	495.8	392.7	315
ukm Scotland	294.6	202.3	262.5	513.7	374.0	202.6	915.5	659.5	484.6	107
ukn Northern Ireland	74.2	53.7	70.3	159.4	119.4	65.7	481.6	413.9	300.8	248

Appendix 5.B Composition of total transfers to the agricultural sector - price support plus "direct and other payments" - ECU mio									
	direct and other payments			price support			total transfers		
	1996	1994	1989	1996	1994	1989	1996	1994	1989
Belgium	451.5	387.9	231.8	952.6	1629.7	1500.2	1404.1	2017.7	1989.0
Flemish Gewest	232.2	239.4	134.2	516.6	1030.5	896.8	748.9	1269.9	1030.5
Wallonnie	219.3	148.6	97.6	436.1	599.2	603.4	655.4	747.8	958.5
Denmark	845.4	449.9	152.4	922.2	1775.8	1621.8	1767.6	2225.7	1989.0
Germany	4598.0	3249.6	2235.3	6168.6	9263.8	10088.8	10766.6	12513.4	12513.4
Baden-Württemberg	412.4	285.9	285.9	557.6	865.1	895.4	970.0	1151.1	1151.1
Bavaria	855.2	613.6	557.5	1605.9	2205.7	2249.6	2461.2	2819.3	2819.3
Berlin	1.5	0.9		2.2	4.8	7.2	3.6	5.7	5.7
Brandenburg	369.1	268.0		240.0	357.9		609.1	625.9	625.9
Hessen	1.5	1.1	1.6	4.9	6.9	7.3	6.3	8.0	8.0
Niedersachsen	5.3	2.4	4.5	5.9	13.2	11.8	11.2	15.6	15.6
Rheinland-Pfalz	210.9	155.3	111.9	245.8	388.2	419.5	456.7	543.5	543.5
Sachsen-Anhalt	370.6	270.5		249.7	348.8		620.3	619.3	619.3
Sachsen	687.3	462.4	469.0	1159.1	1786.2	1942.7	1846.4	2248.6	2248.6
Northrhein-Westfalen	409.2	272.4	278.6	685.8	1156.3	1209.2	1095.0	1428.7	1428.7
Rheinland-Pfalz	242.2	164.6	143.2	240.5	381.5	389.4	482.7	546.1	546.1
Saarland	19.3	12.1	9.6	21.7	29.0	31.9	41.1	41.2	41.2
Schlesien	241.6	187.3		265.0	392.2		506.6	579.5	579.5
Sachsen-Anhalt	327.4	231.3		228.8	391.3		556.2	622.5	622.5
Schleswig-Holstein	209.8	153.9	151.4	481.3	643.6	695.1	691.1	797.5	797.5
Thüringen	234.9	167.7		174.3	293.1		409.2	460.8	460.8
France	2785.6	2575.1	1161.5	789.0	1560.8	1419.4	3574.6	4135.9	2785.6
North Macedonia, Thracian	103.4	96.6	74.9	67.6	148.7	153.3	171.0	245.3	245.3
Central Macedonia	328.6	302.7	170.2	155.2	328.7	267.2	483.7	631.4	631.4
South Macedonia	120.8	111.7	48.9	31.9	53.7	75.6	152.8	165.4	165.4
Greece	310.5	287.1	122.6	107.0	209.6	173.9	417.6	496.7	496.7
Crete	158.8	147.3	49.9	48.8	60.0	88.6	207.6	207.3	207.3
North Macedonia	157.1	144.8	42.5	14.6	29.9	25.9	171.8	174.8	174.8
South Macedonia	302.0	279.2	109.0	75.3	149.3	138.0	377.3	428.5	428.5
Central Macedonia	146.9	135.8	79.2	81.2	144.3	125.0	228.1	280.1	280.1
Thrace	483.0	446.6	192.9	93.9	203.9	138.3	576.9	650.5	650.5
Crete	42.0	38.9	21.6	31.9	46.2	45.5	73.9	85.1	85.1
North Macedonia	111.0	102.7	33.5	16.7	25.1	31.6	127.7	127.8	127.8
South Macedonia	27.7	25.6	28.8	18.5	26.7	28.8	46.2	52.3	52.3
Thrace	0.0	456.3	187.7	69.7	134.7	127.6	69.7	591.0	591.0
Spain	4220.4	3811.1	1038.7	2547.8	5137.8	5107.0	6768.2	8948.9	6768.2
Galicia	76.5	77.4	46.9	369.9	465.6	447.3	446.4	543.0	543.0
Principado de Asturias	38.8	25.1	13.4	128.1	142.3	146.5	166.9	167.4	167.4
Cantabria	26.1	22.9	13.8	103.0	102.1	109.8	129.1	125.1	125.1
Basque Country	39.9	34.9	8.3	61.6	84.0	108.1	101.5	118.9	118.9
Foral Community of Navarre	89.3	84.3	26.7	46.1	116.3	123.3	135.5	200.6	200.6
La Rioja	30.5	25.1	19.1	31.5	58.2	57.8	62.1	83.3	83.3
Aragón	320.1	315.9	94.3	87.5	301.0	365.0	407.7	616.8	616.8
Community of Madrid	31.5	30.6	13.9	31.8	62.9	67.7	63.3	93.6	93.6
Castilla y León	720.8	887.0	132.5	391.4	789.2	917.8	1112.2	1676.2	1676.2
Castilla-La Mancha	675.9	767.9	144.8	175.4	370.2	552.4	851.3	1138.1	1138.1
Extremadura	321.1	323.8	92.7	123.2	275.6	261.5	444.3	599.4	599.4
Cataluña	182.4	162.6	73.1	169.5	515.4	551.6	352.0	677.9	677.9
Community of Valencia	77.8	83.7	68.9	193.1	519.8	349.6	270.9	603.4	603.4
Canary Islands	21.3	23.6	7.1	23.6	42.2	46.5	44.8	65.8	65.8
Andalusia	1368.5	769.0	258.0	331.1	826.3	729.4	1699.6	1595.2	1595.2
Murcia	90.3	81.5	20.6	71.1	198.7	178.4	161.5	280.2	280.2

Appendix 5.B Composition of total transfers to the agricultural sector - price support plus "direct and other payments" - ECU mio

	direct and other payments			price support			total transfers		
	1996	1994	1989	1996	1994	1989	1996	1994	1989
Belgium (ES)	109.1	95.9	4.5	42.0	84.4	94.3	151.2	180.3	129.8
France	7791.6	5398.6	1051.5	6611.1	11532.5	11049.9	14402.7	16931.1	12200.0
Centre de France	202.0	145.1	5.7	58.4	194.2	219.2	260.4	339.3	210.0
Champagne-Ardenne	454.5	317.7	24.0	280.3	546.7	582.9	734.8	864.4	550.0
Normandie	396.5	286.8	21.9	410.3	665.7	684.8	806.9	952.5	600.0
Haute-Normandie	238.8	170.0	19.6	229.8	364.2	352.2	468.6	534.2	350.0
Centre	774.2	561.6	40.6	174.1	593.9	690.5	948.3	1155.5	750.0
Basse-Normandie	267.7	179.2	37.1	594.1	746.8	657.6	861.8	926.0	600.0
Bourgogne	526.6	347.5	49.7	258.3	485.7	477.7	785.0	833.2	550.0
Nord - Pas-de-Calais	220.9	154.1	22.9	350.7	554.1	520.8	571.6	708.2	450.0
Lorraine	292.7	188.3	25.8	261.0	390.4	358.7	553.7	578.7	400.0
Alsace	100.6	68.7	9.5	85.5	177.6	164.7	186.0	246.3	150.0
Bretagne	127.6	86.2	22.5	242.7	309.0	275.5	370.3	395.2	250.0
Pays de la Loire	570.5	370.6	71.8	754.5	1219.4	1144.7	1325.0	1589.9	1000.0
Normandie	422.1	264.6	68.1	860.0	1559.4	1388.7	1282.1	1824.0	1400.0
Poitou-Charentes	553.6	387.3	55.5	266.7	551.8	550.8	820.3	939.1	600.0
Normandie	444.7	305.1	60.6	272.5	625.2	618.6	717.3	930.3	600.0
Normandie	770.6	550.7	134.1	369.5	700.9	706.2	1140.0	1251.6	800.0
Normandie	259.7	159.0	59.7	166.8	203.6	195.2	426.5	362.6	250.0
Normandie-Alpes	353.8	236.4	75.4	430.0	663.5	607.8	783.9	899.9	600.0
Normandie	400.0	265.6	84.6	328.6	450.1	415.2	728.5	715.7	450.0
Languedoc-Roussillon	230.6	192.7	106.3	112.1	269.1	210.6	342.6	461.9	300.0
Provence-Alpes-Côte d'Azur	145.6	111.5	42.5	90.8	237.5	210.2	236.5	349.0	250.0
Normandie	38.3	50.0	13.7	14.2	23.6	21.5	52.6	73.6	50.0
Normandie	1067.6	741.4	254.2	1373.4	1620.0	1568.5	2441.0	2361.4	1500.0
Normandie	3687.4	2882.2	2623.9	4083.9	7067.8	7256.2	7771.3	9949.9	9000.0
Normandie	249.9	194.8	112.5	354.4	631.6	636.8	604.3	826.5	500.0
Normandie	13.3	12.7	9.9	17.5	16.0	14.5	30.7	28.7	20.0
Normandie	10.4	7.0	13.9	10.9	18.7	33.3	21.3	25.7	20.0
Normandie	287.8	241.7	139.9	884.8	1331.6	1216.8	1172.7	1573.2	1000.0
Normandie-Alto Adige	44.3	62.2	39.7	144.8	196.3	153.6	189.1	258.5	150.0
Normandie	325.2	271.1	222.1	397.4	686.7	716.1	722.5	957.8	600.0
Normandie-Venezia Giulia	81.9	65.5	36.5	58.9	139.7	141.3	140.8	205.2	150.0
Normandie-Romagna	284.4	247.2	224.2	547.1	910.3	1066.4	831.5	1157.5	800.0
Normandie	241.0	187.2	154.4	88.8	194.6	245.8	329.8	381.8	250.0
Normandie	145.5	96.4	97.5	32.9	99.0	120.8	178.4	195.4	150.0
Normandie	105.5	108.3	79.1	73.0	181.6	223.9	178.5	289.9	200.0
Normandie	173.4	144.1	130.8	231.7	349.8	385.1	405.1	493.8	350.0
Normandie	100.6	64.4	64.5	60.8	139.7	163.1	161.4	204.1	150.0
Normandie	49.3	27.2	28.8	32.7	52.6	65.5	82.0	79.8	60.0
Normandie	292.2	175.2	373.3	195.0	340.5	381.3	487.2	515.7	350.0
Normandie	437.4	369.5	300.1	231.9	565.9	448.0	669.3	935.4	700.0
Normandie	117.9	91.5	62.8	47.7	121.3	97.3	165.7	212.9	150.0
Normandie	265.4	70.3	172.8	116.7	213.6	298.1	382.1	283.9	200.0
Normandie	276.0	297.7	219.6	307.7	558.6	559.7	583.7	856.3	600.0
Normandie	186.2	148.1	141.5	249.2	319.6	289.2	435.5	467.7	350.0
Normandie	17.1	7.9	1.1	60.0	71.8	66.2	77.1	79.7	60.0
Normandie	494.9	325.3	262.8	2418.9	3606.4	3415.9	2913.8	3931.7	3000.0
Normandie-Nederland	111.5	73.3	61.4	572.9	725.1	720.9	684.4	798.4	600.0
Normandie-Nederland	156.8	103.1	80.9	848.5	1206.3	1157.2	1005.3	1309.4	1000.0
Normandie-Nederland	117.9	77.5	63.0	465.9	676.2	635.0	583.9	753.7	600.0
Normandie-Nederland	108.7	71.4	57.4	511.8	956.4	902.8	620.5	1027.8	800.0
Normandie	1098.1			677.6			1775.7		

Appendix 5.B Composition of total transfers to the agricultural sector - price support plus "direct and other payments" - ECU mio

	direct and other payments			price support			total transfers		
	1996	1994	1989	1996	1994	1989	1996	1994	1989
Österreich	497.8								
Niederösterreich	227.9								
Oberösterreich	372.4								
Belgien	617.0	672.7	132.4	580.2	958.9	977.8	1197.2	1631.6	1010.0
Frankreich	129.7	124.4	29.3	166.9	228.3	248.0	296.6	352.7	200.0
Frankreich (P)	109.8	86.6	26.9	135.8	216.9	212.4	245.6	303.4	150.0
Ilhas da Boa Vista e Vale do Tejo	77.7	100.5	24.0	76.3	208.5	181.5	154.0	309.0	100.0
Irland	260.5	291.3	44.3	111.9	192.7	237.0	372.4	484.0	200.0
Italien	6.4	32.4	5.0	14.0	32.7	28.5	20.4	65.1	10.0
Portugal (PT)	25.9	34.1	1.8	72.0	71.1	59.2	97.9	105.2	10.0
Portugal (PT)	6.8	3.2	1.1	3.4	8.5	11.3	10.2	11.7	10.0
Spanien	562.4			490.7			1053.1		
Finnland	121.4								
Åland	126.2								
Finlandia-Suomi	91.4								
Uusimaa (suuralue)	32.7								
Etelä-Suomi	188.6								
Alue	2.0								
Schweden	576.2			739.0			1315.2		
Stockholm	15.8			10.3			26.1		
Östra Mellansverige	144.9			114.2			259.1		
Västsverige	99.2			132.1			231.2		
Norra Mellansverige	53.6			64.8			118.4		
Östernorrland	34.6			41.1			75.7		
Västernorrland	44.1			47.0			91.1		
United Kingdom	2333.8	2128.3	841.3	3244.7	5609.5	6738.1	5578.5	7737.8	7000.0
North East									
North West									
Yorkshire	193.5	182.8	57.3	187.8	462.9	478.1	381.3	645.6	300.0
East Midlands	230.7	240.9	58.6	174.8	502.5	577.2	405.5	743.4	600.0
West Midlands	182.0	154.1	76.8	308.4	496.0	571.4	490.4	650.1	600.0
East Anglia	213.0	184.3	18.2	104.4	396.0	432.2	317.4	580.3	400.0
Hampfordshire									
Hampshire									
London									
South East									
South West	307.5	218.7	121.1	704.5	947.1	982.9	1012.0	1165.8	1000.0
Wales	217.4	215.2	87.2	380.3	495.1	792.2	597.7	710.4	800.0
Scotland	363.3	318.6	161.5	374.3	626.3	903.3	737.6	944.9	1000.0
Northern Ireland	131.5	156.1	70.3	326.3	436.9	489.9	457.8	593.0	500.0