

EUROPEAN INTEROPERABILITY REFERENCE ARCHITECTURE

ISA² Programme
Interoperability Solutions
for European Public Administrations,
Businesses and Citizens

ISA²

Top reasons to use EIRA

- ✓ It operationalizes the European Interoperability Framework from an architectural perspective
- ✓ It supports the design of Trans-European systems by highlighting the most salient interoperable building blocks
- ✓ It facilitates portfolio decision-making, for example rationalization
- ✓ It promotes share and re use of interoperability solutions
- ✓ It allows assessing the architectural impact of legislation

Our target audience

The notion of modern and performing public services entails interoperability to implement more efficient digital public services that bring value to, citizens and businesses across borders and sectors.

However, **interoperability** is not a purely technical concept, but has a broader scope. According to ISA², it is “the ability of disparate and diverse organisations to interact towards mutually beneficial and agreed common goals, involving the sharing of information and knowledge between organisations, through the business processes they support, by means of the exchange of data between their respective ICT systems.” This is why the European Interoperability Reference Architecture is **of interest to policy makers, portfolio managers and ICT managers, not only enterprise or system architects.**

Our mission

The development of EU Systems as a result of sectoral policies carries a downside risk to interoperability: sectors may end up by developing their own standards, interfaces and applications, and thus create structural inefficiencies for data to flow across sectors.

The same applies to the development of National Systems as a result of national policies. In this case every EU country may end up by developing their own standards, interfaces and applications. The European Interoperability Reference Architecture is a **step towards greater reuse of solutions among public administrations.**

An action supported by ISA²

This Action is supported by the European Commission's ISA² Programme. ISA² is a EUR 131 million programme supporting the modernization of public administrations in Europe through the development of interoperability solutions. More than 25 solutions are already available with more to come soon. All solutions are open source and available free of charge to any interested public administration in Europe.

More on the programme

ec.europa.eu/isa2

Contact ISA²

ISA2@ec.europa.eu

Follow us

 @EU_ISA2

 ISA² Programme

 ISA² Programme

Want to know more?

EIRA and CarTool

Contact us

DIGIT-EIRA@ec.europa.eu

New EIRA & CarTool

The new **EIRA v3.0.0** is now available on Joinup. It has major upgrades related to the release of the new European Interoperability Framework, insights on the key interoperability enablers and a comprehensive review of the quality of the descriptions of each architecture building block using Persistent Unified Reference Identifiers.

Following the new EIRA, the new **CarTool v3.0.0** has been released as well. It brings unmatched support for the EIRA as an open source Archi® plug-in, and includes both editing features to model solutions using the EIRA and querying features to query an EIRA-based Cartography of solutions.

The major upgrades enable access to:

- third reference architectures in addition to the EIRA;
- the ISA² European Interoperability Cartography (EIC) of solutions; and
- the EIRA Library of Interoperability Specifications (EIRA LIS).

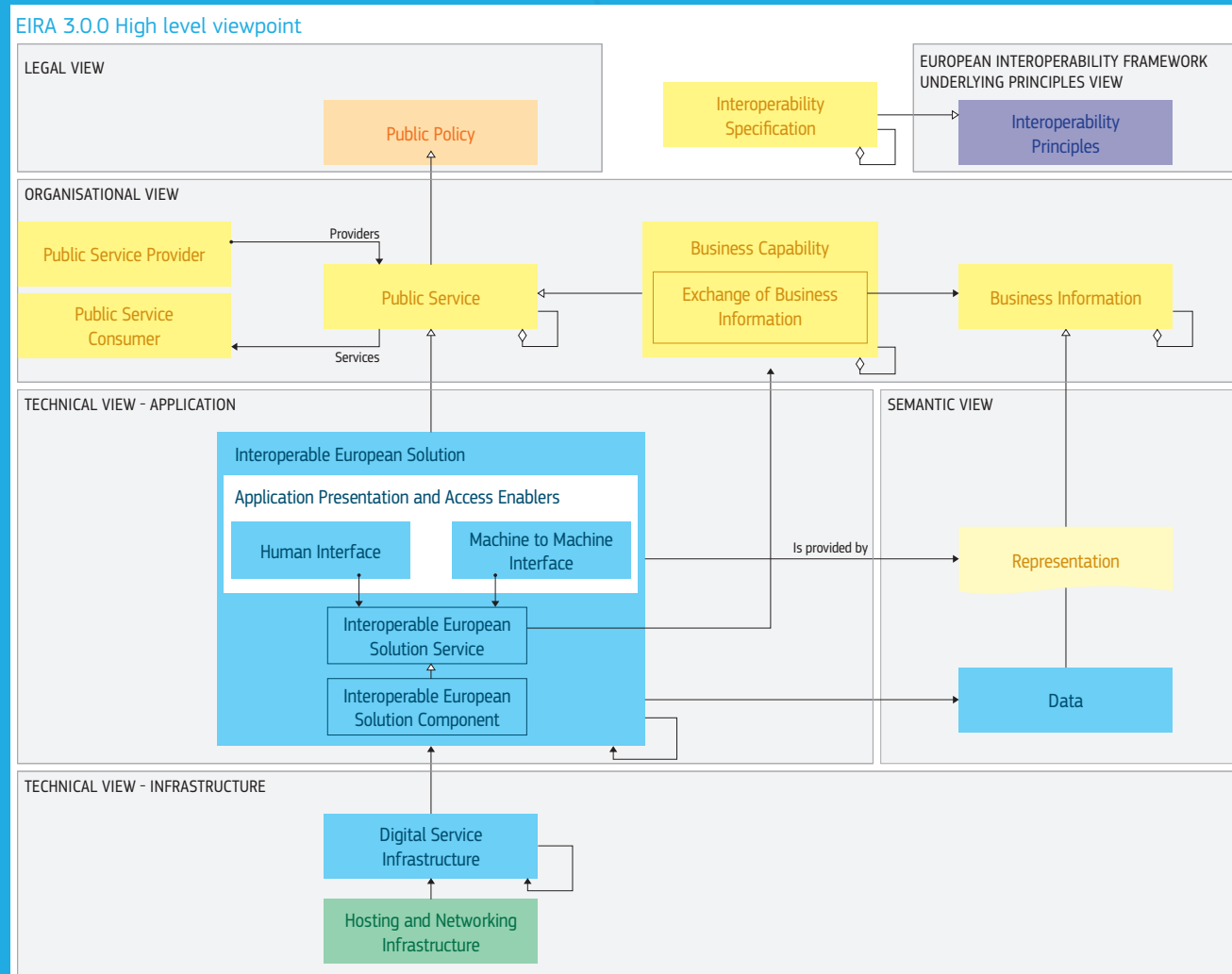
The **EIRA LIS** contains standards and specifications substantiating the interoperability aspects of the EIRA architectural building blocks. The aim is to support decisions on design of interoperable solutions enabling digital public services.




Our approach

The EIRA/CarTool and EIC are developed through a collaborative approach involving the European Commission, standardisation bodies, EU countries and other experts. This approach supports the alignment of the EIRA and the EIC with the needs of its end users, and allows building blocks and solutions from a diverse set of European projects and initiatives to be taken into account.

Our value proposition

The users' needs have been translated into 4 groups of use cases, summarised in the table below:



 DESIGNING	Accelerate the design of systems that support the delivery of interoperable digital public services (across borders and sectors).
 ASSESSING	Provide a reference model for comparing existing architectures in different policy domains and thematic areas, to identify focal points for convergence and reuse.
 DISCOVERING AND REUSING	Ease the discovery and reuse of interoperability solutions through the Trans-European Solutions Cartography using the CarTool
 COMMUNICATING AND SHARING	Help documenting the most salient interoperability elements of complex systems and facilitate the sharing of reusable solutions

If you participate in the design of cross-border or cross-sector information systems at European or national level, you will benefit from the European Interoperability Reference Architecture in your daily work.