



EUROPEAN COMMISSION
DIRECTORATE-GENERAL
INFORMATICS
Information systems Directorate

Brussels, April 2008

European Commission

IMI Release Notes

Internal Market Information System

Information on IMI compatibility with internet browsers and supported platforms

Version 1.100

TABLE OF CONTENTS

1. INTRODUCTION	3
1.1. Purpose	3
1.2. Scope	3
1.3. Overview	3
2. ABOUT THIS RELEASE	3
3. COMPATIBILITY AND SUPPORTED PLATFORMS	3
3.1. Web browsers	3
3.2. Screen resolution and colour depth	3
3.3. Remote control software	4
3.4. System requirements	4
3.5. Network requirements	5
3.6. Browser options	5
3.6.1. Internet Explorer	5
3.6.2. Mozilla Firefox	8
4. INSTALLATION/VERSION INFORMATION	9
5. CHANGES/NEW FEATURES	9
6. KNOWN ERRORS, PROBLEMATIC FEATURES AND LIMITATIONS	9

1. INTRODUCTION

1.1. Purpose

The purpose of this document is to communicate major features and changes in this release of the Internal Market Information System. It also documents system requirements, known problems and workarounds.

1.2. Scope

This document describes the Internal Market Information System version 1.0, to be used for the IMI pilot project on the recognition of Professional Qualifications.

1.3. Overview

IMI is a general system capable of supporting the exchange of information, which is needed in order to make internal market legislation work smoothly. It allows fast, structured, traceable exchange of information among competent authorities in different member states, supporting all official EU languages.

IMI supports also the administrative co-operation requirements of Directive 2005/36/EC on the Recognition of Professional Qualifications.

The application is hosted in the Data Centre of European Commission, and accessible through the Internet. A secure communication protocol (HTTPS) is used to encrypt the data in transit on the network.

2. ABOUT THIS RELEASE

Release 1.0 includes all the functionalities needed for the pilot phase of IMI, that will focus on the recognition of Professional Qualifications for 4 pilot professions.

3. COMPATIBILITY AND SUPPORTED PLATFORMS

3.1. Web browsers

IMI 1.0 has been designed to avoid any platform-specific feature: as such, it is expected to work on most recent web browsers. However, it was clearly not possible to execute extensive tests on all possible platforms, and with all possible configurations.

For this reason, IMI has been fully tested on the browsers most used in Public Administrations, as well as in the general IT market, while it was developed so that it should work (but is not supported) on most mainstream browsers.

The following table explains this in detail:

IMI has been fully tested and is fully supported	
	Mozilla Firefox version 2 on Windows XP with service pack 2
	Internet Explorer version 6 on Windows XP with service pack 2
	Internet Explorer version 7 on Windows Vista Enterprise
	Mozilla Firefox version 2 on Linux (Ubuntu distribution)

IMI SHOULD WORK, but HAS NOT BEEN TESTED and IS NOT SUPPORTED	
	Internet Explorer 5.5 Mozilla Firefox 1.x Netscape Navigator 9.x Apple Safari 3.1 Opera 9.26
IMI DOES NOT WORK	
	Internet Explorer 5.0 and older versions Netscape Communicator 4.x and older versions Lynx and other text-only browsers

3.2. Screen resolution and colour depth

To make the best use of all the features of IMI user interface, it is suggested to use a screen resolution of 1024 * 768 pixels (or higher) and a colour depth of 65K colours (or higher). IMI can be used also at a screen resolution of 800 * 600 pixels and with only 256 colours.

The browser features to increase and decrease font size are supported and work correctly in IMI. These features can be accessed as follow:

- Mozilla Firefox: View=> Text size => Increase / Decrease
- Internet Explorer: View=> Text size => Larger / Smaller

3.3. Remote control software

IMI works fairly well also when the browser is running on a remote machine, and it is accessed using a remote control software.

IMI has been tested with the "Remote Desktop Connection" available in Windows operating systems, and with RealVNC, an open-source remote control software which is the "de facto" standard in Linux environments. Please note, however, that the use of a remote control software, while it may be useful for some specific cases, generally degrades the application performance.

3.4. System requirements

IMI is a web application, and as such most of its logic is executed on the web server. However, part of the user interface requires processing power on the local computer. In general, any computer that can run a recent version of Internet Explorer or Mozilla Firefox can be used to access IMI.

In more specific terms, recommended system requirements to use IMI can be considered equal to the minimum system requirements to execute Windows Vista, as reported in <http://www.microsoft.com/windows/products/windowsvista/editions/systemrequirements.msp>

- 1 GHz 32-bit (x86) or 64-bit (x64) processor
- 512 MB of system memory

Other hardware requirements, like disk space, do not apply to IMI that stores its data on the server.

Linux operating systems have normally lower hardware requirements, so a Linux computer will be able to execute IMI even with a less powerful hardware configuration.

3.5. Network requirements

IMI interface has been designed to minimise the quantity of data exchanged between the local computer and the server, limiting graphics and unnecessary screen elements; for this reason, it does not pose a heavy load on the network speed. However, to experience a reasonably fast response time in IMI, an Internet broadband connection is needed, capable of a minimum bit rate of 512 kbit/sec.

In most large organizations where Internet connection is provided through the internal local-area network, the connection speed will satisfy the above requirement.

3.6. Browser options

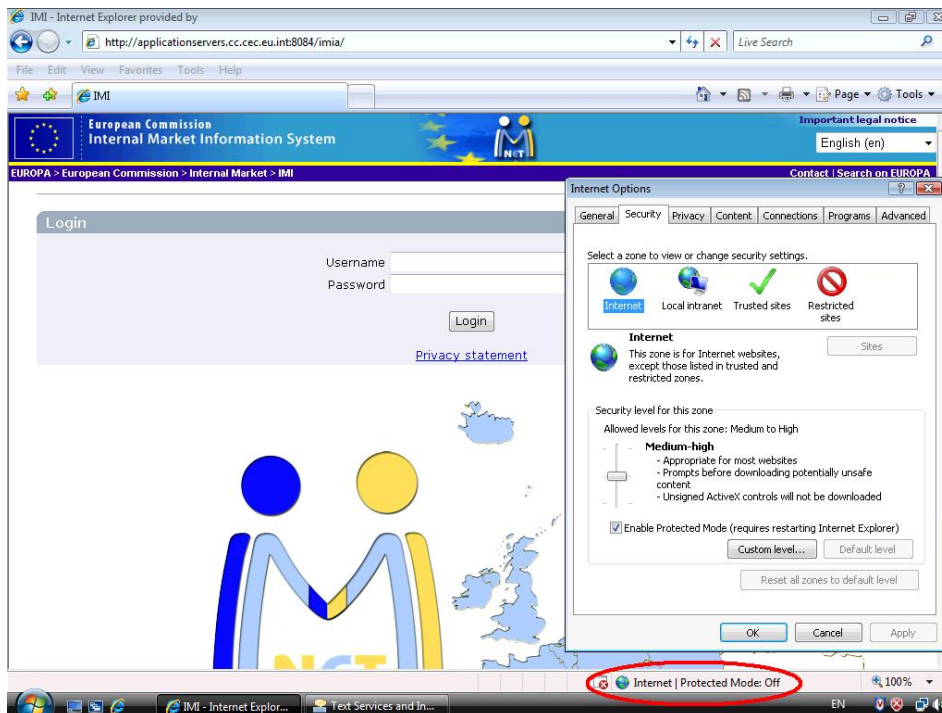
A very restrictive setting of browser options can limit the functionality of IMI. Specifically, if JavaScript support is turned off in the browser options, some IMI functionalities will not be available. A similar result is obtained if IMI is added to the list of "restricted sites" in Internet Explorer. Popup blockers, on the other hand, do not give problems since IMI does not use pop-up windows.

In general, IMI works fine with default settings or with most commonly used browser settings, since it does not rely on specific browser features. More details are reported below.

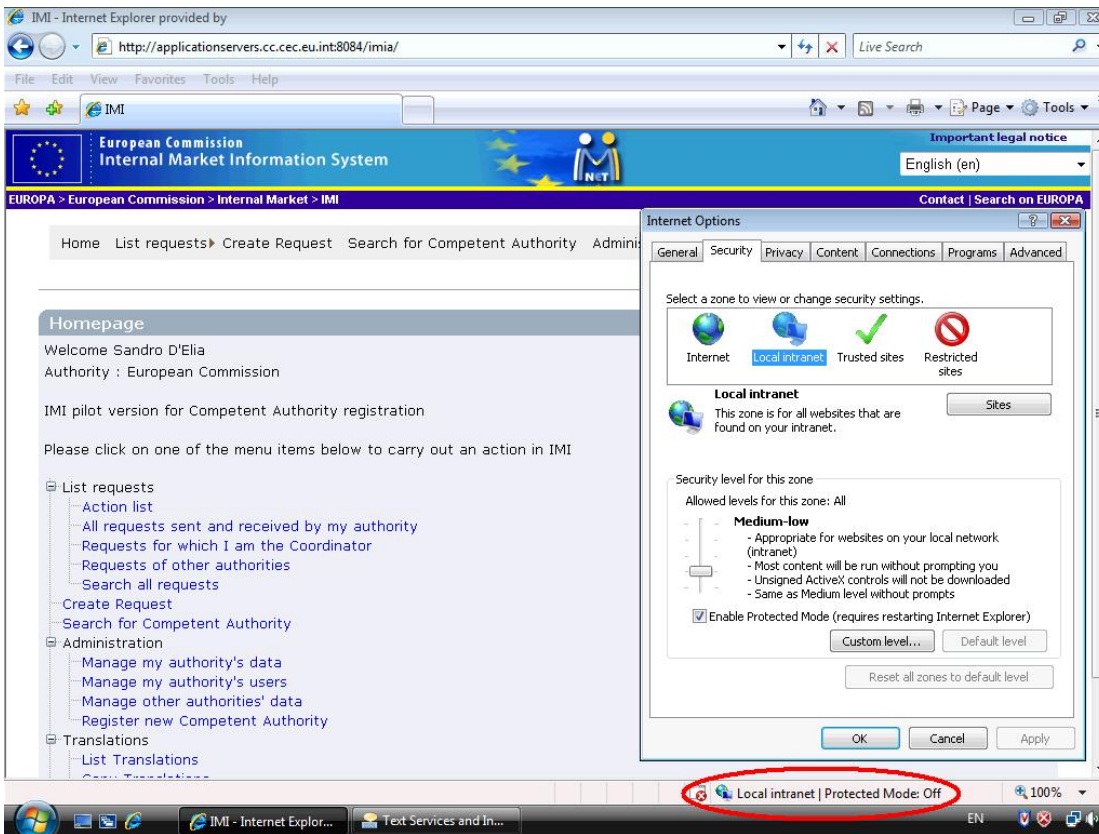
3.6.1. Internet Explorer

IMI has been tested using the default settings of Internet Explorer 7 installed on Windows Vista Enterprise.

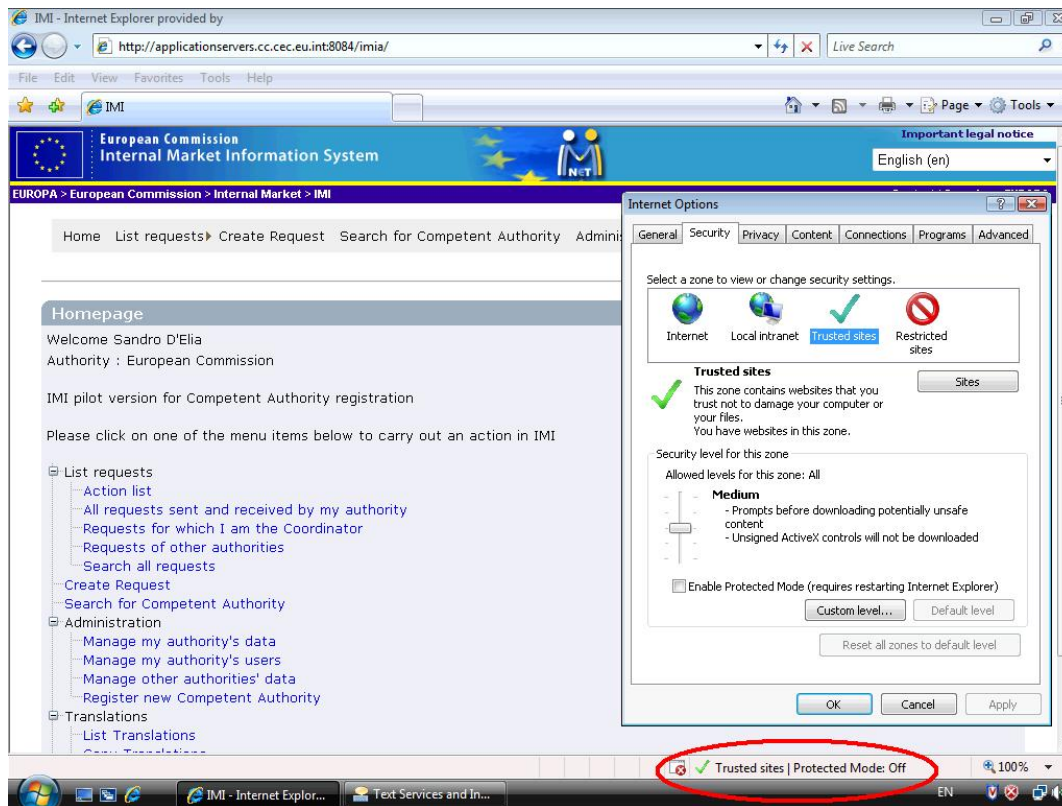
IMI works correctly if the security settings of the browser are set to any of the three security zones: "Internet", "Local intranet" or "Trusted sites". To access the security settings, select "Tools – Internet options" from the menu bar, and then select the tab "Security", as in the images below.



IMI working in "Internet" security mode

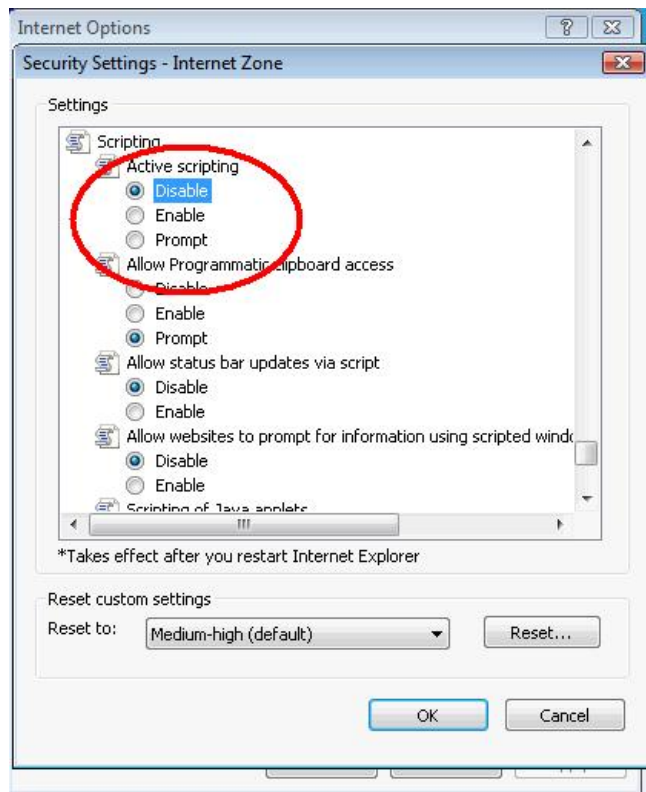


IMI working in "Local intranet" security mode



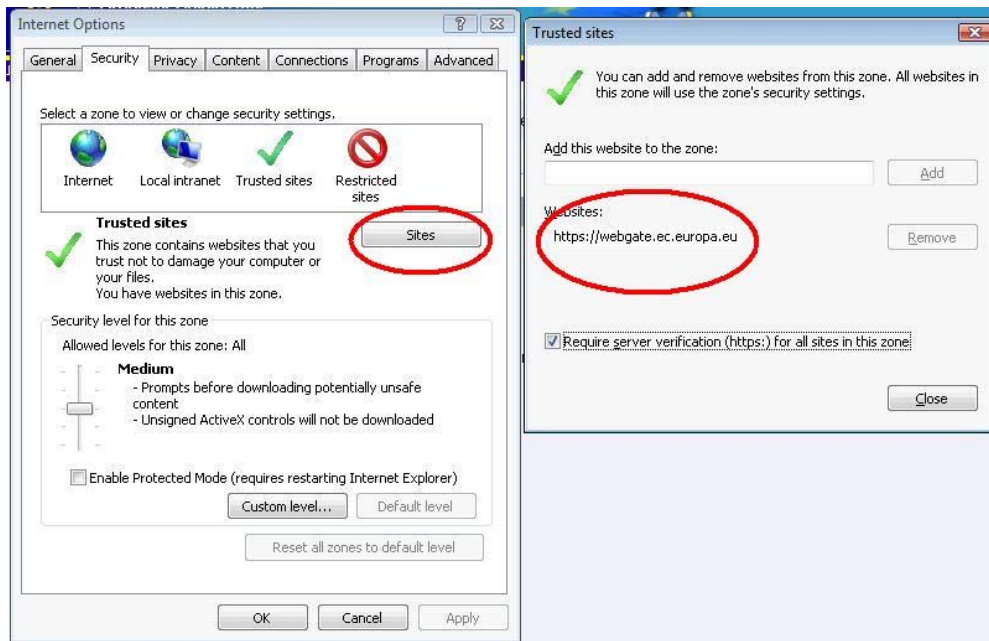
IMI running in "Trusted sites" security mode

It is possible that specific browser settings prevent IMI from working properly. The single most important setting is the "Active scripting ": it is known that disabling this setting (as in the figure below) will not allow IMI to run:



Disabling scripting in Internet Explorer

In case of problems, it is suggested to reset the security settings for the different zones defined in Internet Explorer (Internet, Local intranet, Trusted sites, Restricted sites) to the default level, and to add IMI to the list of TRUSTED SITES, as in the example below.



Adding IMI to the trusted sites in Internet Explorer

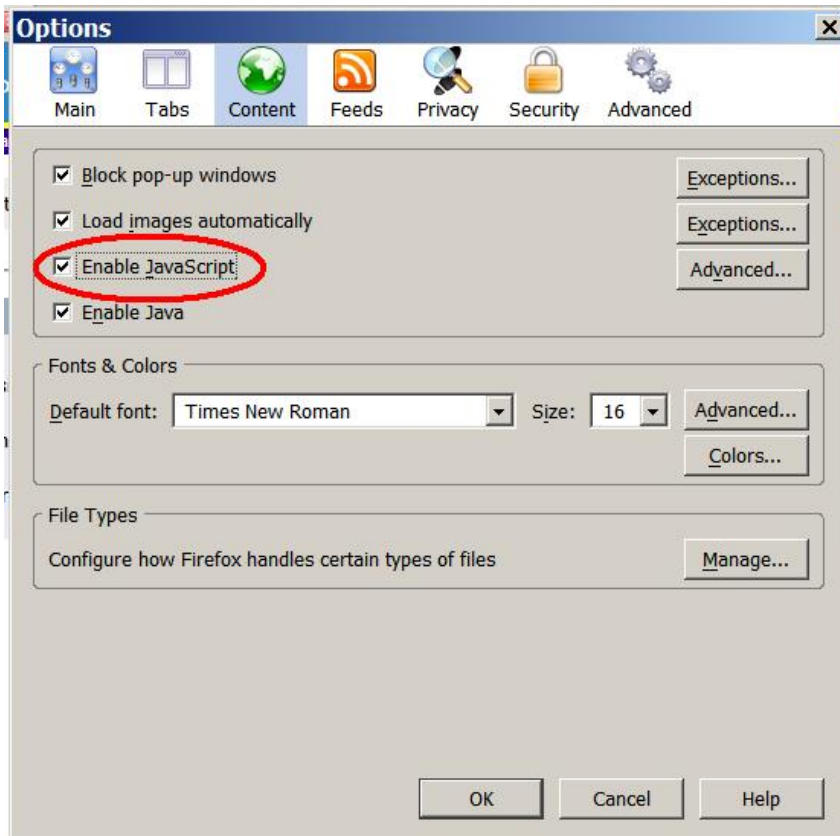
Please note that if IMI is added to the list of "Restricted sites" it will not work properly.

The "Protected mode" of Internet Explorer 7, available only on some configurations, will have no effect on IMI execution because IMI does not manipulate files or registry keys on the local machine.

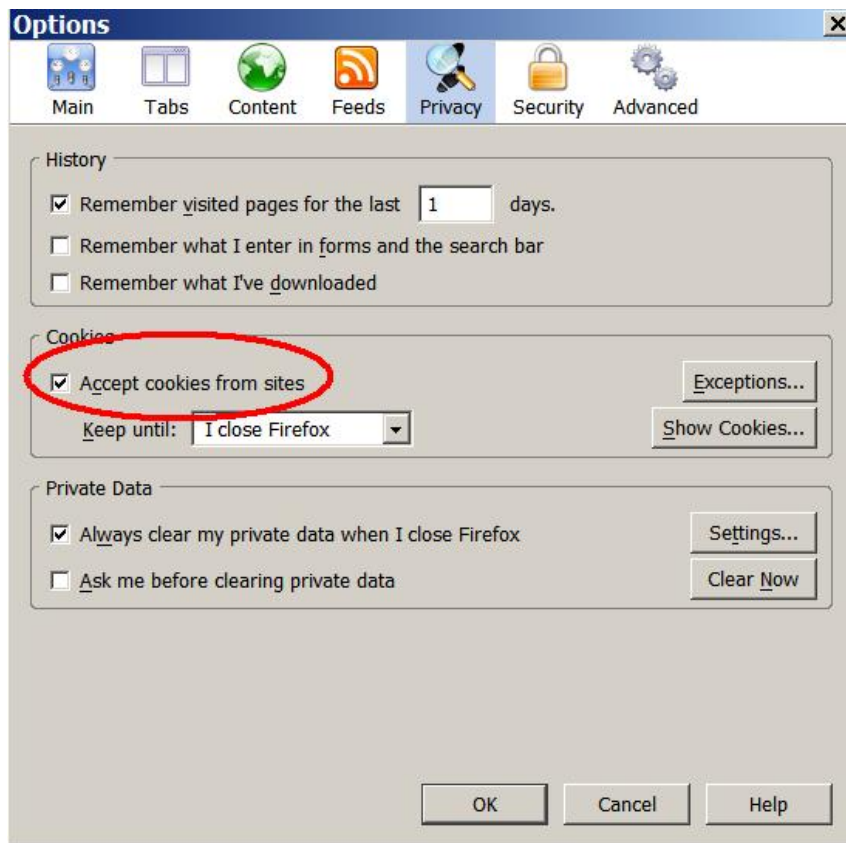
3.6.2. *Mozilla Firefox*

IMI has been tested With Mozilla Firefox version 2.0.x on Windows and on Linux (Ubuntu); no significant difference in the browser behaviour among the two different platforms has been found.

IMI works properly with the default Mozilla settings, and also with more restrictive configuration. However, the "Accept cookies from sites" and "Enable Javascript" settings have to be left in the default status (checked) for IMI to work properly. The settings can be found under "Tools - Options" as in the examples below.



Correct setting for the "Enable Javascript" flag in Firefox



Correct setting for the "Accept cookies from sites " flag in Firefox

As with Internet Explorer, also in Mozilla most of the different browser settings have no effect on IMI, and can be set to any preferred value.

Mozilla works perfectly with IMI also in the "portable" version, which does not require installation and can be executed from an USB key or a CD. Portable Firefox can be downloaded from http://portableapps.com/apps/internet/firefox_portable

4. INSTALLATION/VERSION INFORMATION

IMI runs on the web server, and no local installation is needed.

To check which is the IMI version currently in execution, please select the "About" menu item in the IMI application menu.

5. CHANGES/NEW FEATURES

Version 1.1 is the first full version of IMI application, including all the functionalities for the information exchange among Competent Authorities.

6. KNOWN ERRORS, PROBLEMATIC FEATURES AND LIMITATIONS

There are a few known limitations that will be solved in future releases

- The application language cannot be changed during the execution of tasks that require several steps, like the creation of a new request. In this case, the application goes back to the main menu.
- After the application has been idle for the number of minutes defined in the application server configuration (currently 15 minutes), the session is closed without warning and the user has to login again.