

A blue-tinted photograph of a forest reflected in water. The trees are silhouetted against the water, creating a symmetrical effect. The overall mood is calm and serene.

National digitisation strategies benefiting food and farming: the Estonian case

e-Estonia

A large crowd of people is gathered at dusk, many holding Estonian flags. In the background, there is a large, arched structure and a lighthouse with a flame on top. The sky is a mix of orange, red, and blue.

- + internet is a social right
- + every Estonian resident has an electronic ID
- + 99% of services are online
- + a few hours to start a company
- + Estonians trust e-solutions

electronic ID

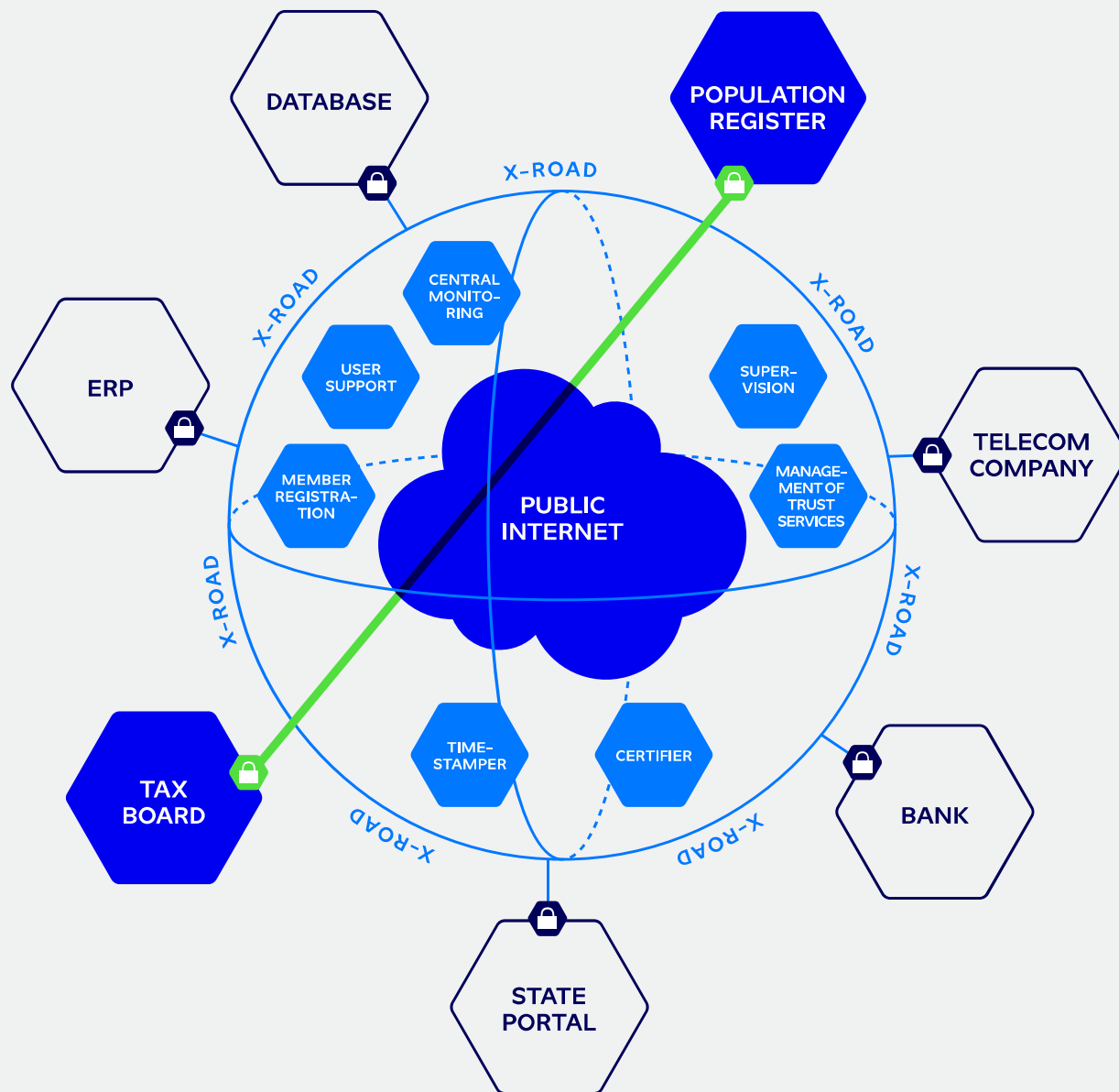
The strongest identity.

- + 94% of e-ID – celebrating 15 Years!
- + 7% of mobile-ID
- + 15% of smart-ID

exchange

The busiest highway of e-Estonia – X-Road from 2001.

- + saving 800 years annually
- + over 900 connected organizations, databases
- + over 500 million transactions per year
- + Clear and honest principles:
 - Once-only
 - Digital by default
 - Strict rules of access



E-estonia and food and farming



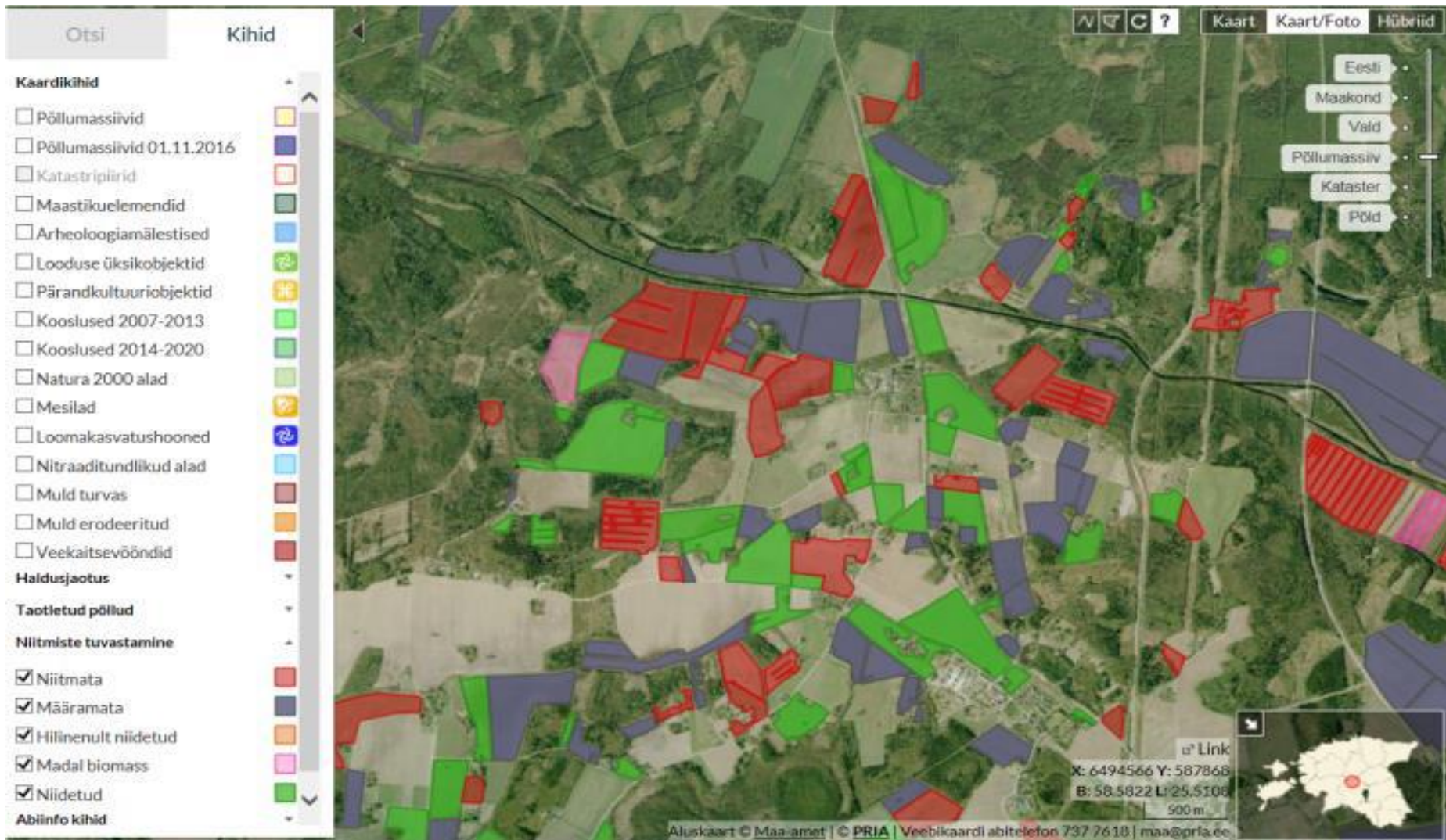
ARIB - Estonian Paying Agency

e-ARIB:

- + e-ID is used to identify the client
- + All of the services are possible to use online
- + 90% of the area-based applications are submitted via e-ARIB
- + System is user-friendly allowing farmers to use it without specialised consultants.
- + Information from other registers pre-filled for clients
- + High level of automated controls – focus on IT-system development instead of hiring extra employees



Sattellite based mowing detection of ARIB



PÕLLUMAJANDUSE REGISTRITE
JA INFORMATSIOONI AMET

Veebikaardi funktsioonid

Otsingud

Kaardikihid

PRIA avaliku veebikaardi teave

PRIA veebikaart on abivahend, mille abil saab kiiresti leida põllumassiive, poollooduslike kooslusi, loomakasvatushooneid ning mõota vahemaid ja pindalasiid.

Probleemi korral võta ühendust:

Telefon: 737 7618

E-post: maa@pria.ee

Allikad:

Maa-amet: Katastriinfo, aluskaardid,

veekaitsevööndid, aadressandmed

Keskkonnateabekeskus: Keskkonnaregister

Põllumajandusamet: Maaparandussüsteemide register

Põllumajandusuuringute Keskus: Mullakaardid

Muinsuskaitseamet: Arheoloogiamälestised

Keskonnaamet: Karuputkekolooniad

PRIA avaliku veebikaardi valmimist rahastas Euroopa Liit

Client portal of the Ministry of Rural Affairs



- + One consolidated portal for most of the services of the Ministry and its area of government: food, feed, plant health, seeds, land improvement, fertilisers, organic agriculture.
- + e-ID is used to identify the client
- + Connectivity with relevant registers - aim is to pre-fill the data fields as much as possible.
- + Connectivity with portals dealing with official controls, surveys, monitoring fees etc. with fully automated processes
- + Ambition to go fully paperless in next couple of years
- + Main logic in developing e-services – specified target group and each service has to have its „owner“ who is responsible for the quality.



MAAELUMINISTEERIUM

Mobiilinumbr või isikukood

 Logi sisse Mobiil-ID'ga

 Logi sisse ID-kaardiga

VETERINAAR- JA TOIDUAMET

Söödad

Toidukontroll

PÕLLUMAJANDUSAMET

Taimetervis

Seemned

Maaparandus

Väetised

Mahepõllumajandus

Füto-sanitaarsertifikaadi asendamise taotlus



Füto-sanitaarsertifikaadi taotlus



Riigilõivu tagastamise avaldus



Seemnekartuli sertifitseerimine - mullaproovide võtmine



Seemnekartuli sertifitseerimine - põldtunnustamise tellimine



Seemnekartuli sertifitseerimine - taimepasside taotlus



Säilitussordi seemnekartuli kasvatamise teatis



Taimeliigi mikropaljundamise tegevusloa taotlus



Taimepassi taotlus



Taimetervisse registrisse kandmine ja registriandmete muutmine (majandustegevusteade)



Teatis EL toodavast paljundusmaterjalist ja tarbekartulist



kliendiportaal@agri.ee

+372 625 6100

Kasutusjuhend



Europa Liit
Euroopa
Regionaalarengu Fond



Ennast tulevikku heaks



Future plans

Need to increase collaboration between state, IT-sector and food and farming sector

NB!

+ Secure and clearly ruled data exchange via e-ID and X-road serves as a prerequisite



The priorities of the Estonian EU Presidency

- + An open and innovative european economy
- + Safe and secure Europe
- + Digital Europe and the
Free Movement of Data
- + Inclusive and sustainable Europe



Estonian Presidency
of the Council of the
European Union

! Due to revoking and renewing the ID-card certificates, there may be disruptions in using the Internet Bank

[More information](#)

News - 10.11.2017
SEB: new app makes insuring one's life easier
 The life insurance survey of SEB Elu- ja Pensionikindlustus reveals that Estonian people value family, close friends, children and health most in their life. However, the insurance statistics tell you otherwise: nearly 60% of the population have home insurance, less than half of it, i.e., nearly 30% of population have life insurance. According to bank data, more than half on Estonian population is bound with financial obligations (including leasing).
[Read more](#)

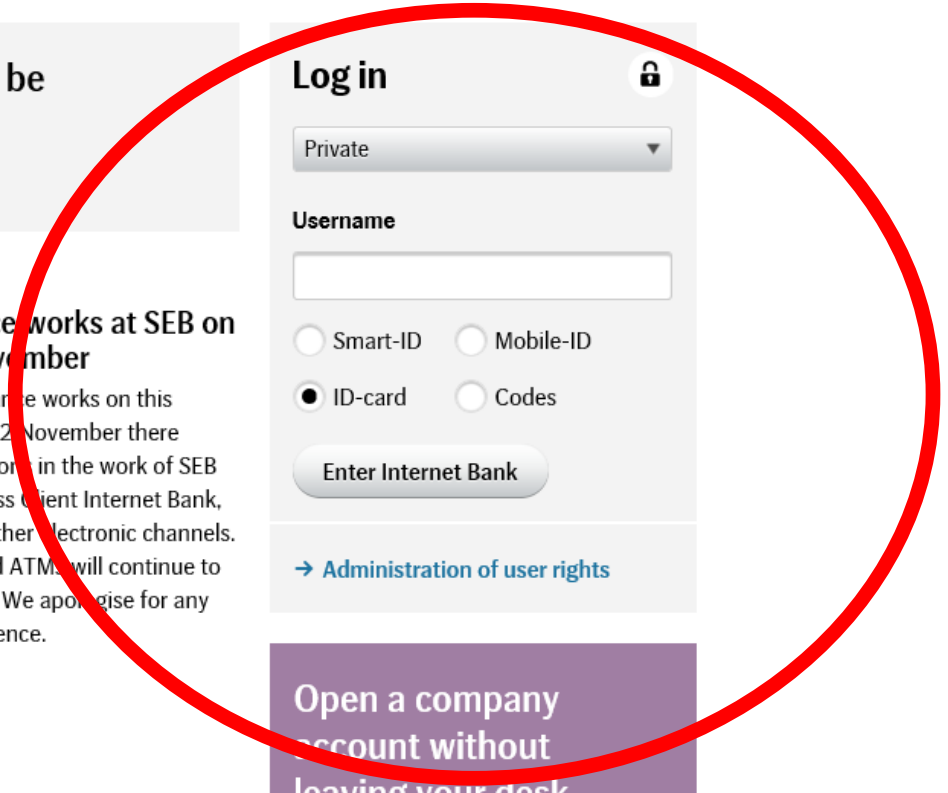
News - 01.11.2017
Eight steps to renew ID-card certificates
 A security risk affecting ID-cards issued since October 2014 has been detected and all certificates of these cards shall be suspended by the state on 3 November at 24:00.
[Read more](#)

Investment news - 07.11.2017
Baltic Horizon Fund additional subscription period 6th November 2017 – 30th November 2017
 Subscription order are accepted until 30th of November 2017 4 pm. The subscription order can be submitted only at a bank office.
[Read more](#)

News - 01.11.2017
SEB will no longer issue code cards
 SEB will stop issuing code cards starting from 1 November, offering its current and future clients the option of using Smart-ID, Mobile-ID, or a PIN calculator as alternative authentication methods. SEB will continue to issue code cards to underage customers who so request.
[Read more](#)

News - 07.11.2017
IT maintenance works at SEB on 11 and 12 November
 Due to IT maintenance works on this weekend, 11 and 12 November there might be interruptions in the work of SEB Private and Business Client Internet Bank, Mobile Bank and other electronic channels. Card payments and ATMs will continue to operate as normal. We apologise for any possible inconvenience.
[Read more](#)

News - 31.10.2017
In January, the price list and terms and conditions of AS SEB Pank will change
 On 1 January 2018, changes will come into force in the price list of AS SEB Pank. On 13 January, changes in the general terms and conditions, in the terms of settlement, in the terms and conditions of agreements of current accounts, debit cards, credit cards, and credit cards with fixed payment, and in the terms and conditions for the Internet Bank for Business, the Internet Bank for private individuals, the merchant



Log in

Private ▾

Username

Smart-ID Mobile-ID

ID-card Codes

Enter Internet Bank

[→ Administration of user rights](#)

Open a company account without leaving your desk

Read more

Contact

Customer support
 665 5100

Skype call
 seb.eesti

Letter to bank
 Contact form

Estonian priorities & agriculture

- + An Open And Innovative European Economy
 - **Launching A Debate On The Future Of The Common Agricultural Policy (CAP).**
- + Digital Europe And The Free Flow Of Data
 - Free Movement Of Data
 - E-Government
- + Inclusive and sustainable Europe
 - Sustainable use of resources (water ,air, soil)