

# HOLISTIC APPROACH TO THE USEFUL INFORMATION REGARDING HEALTH CARE: CROWDHEALTH USE CASE.

HOSPITAL LA FE DE VALENCIA  
UNIVERSITARI I POLITÈCNIC



Instituto de  
Investigación  
Sanitaria LaFe



CrowdHEALTH



GENERALITAT  
VALENCIANA

CONSELLERIA DE SANITAT UNIVERSAL  
I SALUT PÚBLICA

**LaFe**  
Departament  
de Salut



## INDEX

Innovación y experiencia al servicio del paciente

- ▶ Health Department La Fe, Valencia
  - ▶ Who we are?
  - ▶ What we have?
- ▶ Real-world data for improving health care
- ▶ What do we need?
  - ▶ The obesity public health problem
- ▶ EU CrowdHEALTH Project
  - ▶ Holistic Health Records
- ▶ Wishful thinking



### Who we are?

- ▶ Health Research Institute LA FE (IISLAFE) is a research institution that manages Health Department Valencia-La Fe (La Fe) research activity.
  - ▶ La Fe covers geographical area located in the south area of the city of Valencia
  - ▶ La Fe coordinates all the healthcare services provided in the territory, from primary to tertiary care, covering 300.000 inhabitants directly and a catchment area adding up to 515.000 persons.
  - ▶ The Department has a central management based in the Hospital La Fe, the biggest reference hospital in the region and fifth in Spain.




### What we have?

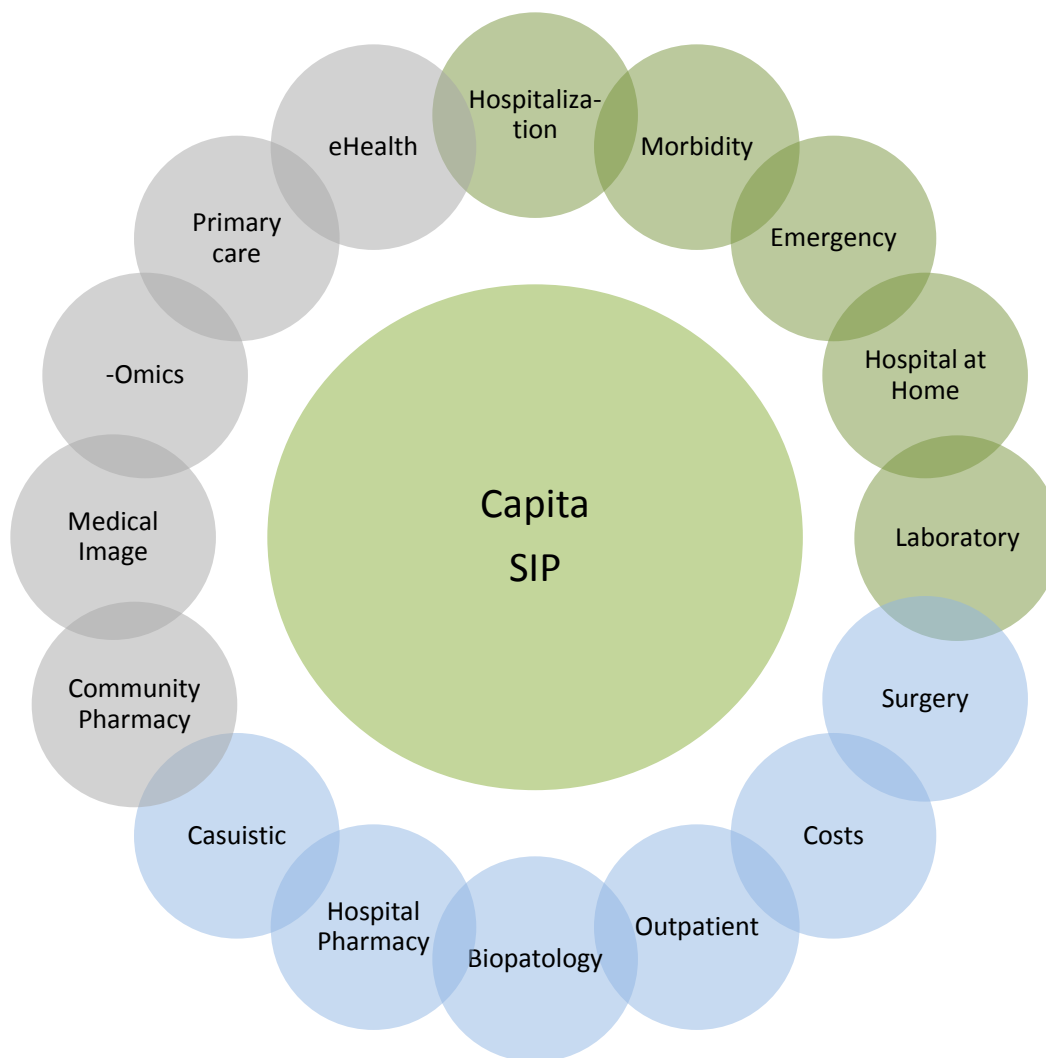
- ▶ Health Department La Fe has deployed Electronic Health Records at different care levels.
  - ▶ La Fe has a volume up to 20 million of data related to our Health Department organized in a system of datamarts.
  - ▶ Data warehouse from several information systems including: clinical activity and assists areas, diagnostics systems and hospital management.



Real-world data for improving health care

Innovación y experiencia al servicio del paciente

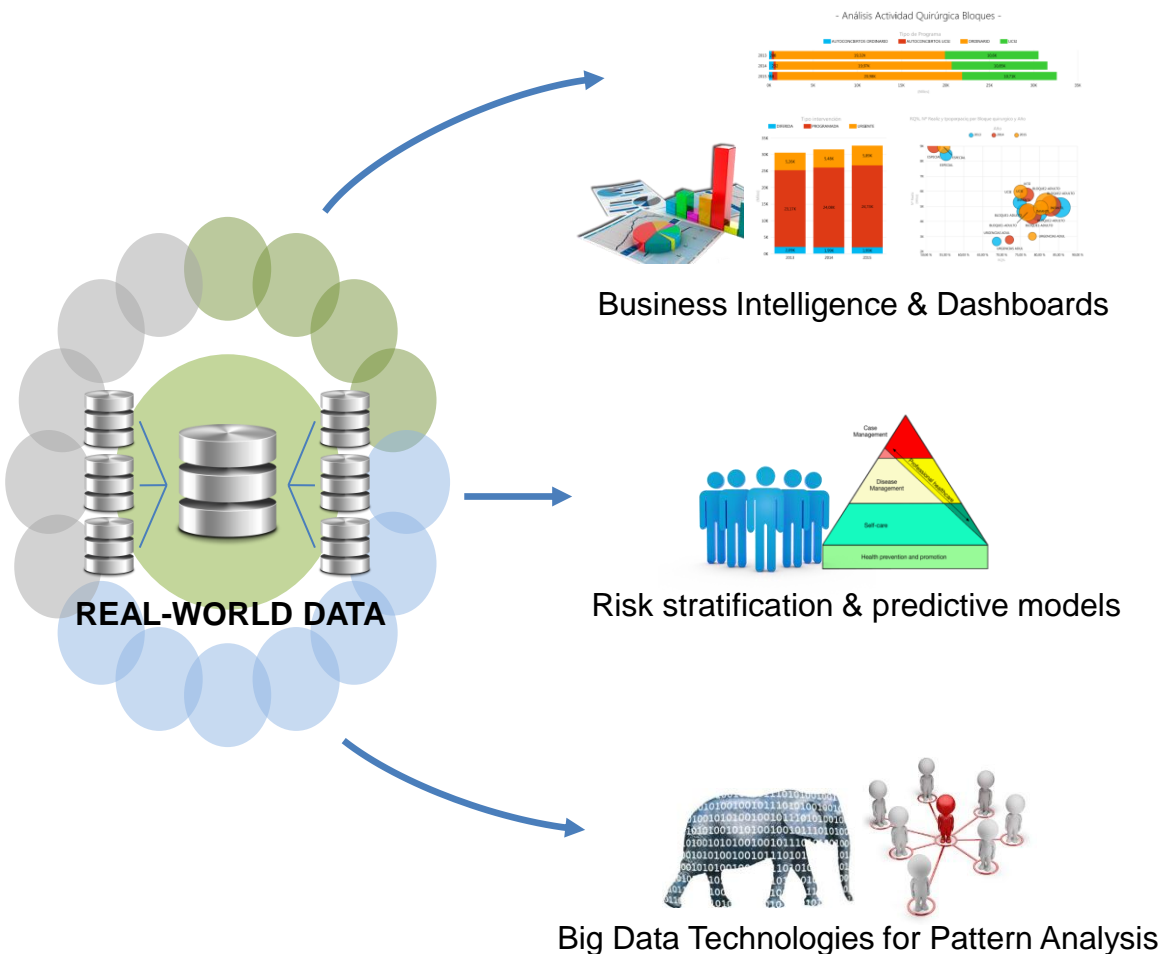
-  Datamarts already in use
-  Datamarts in preproduction stage
-  Data exists but they are not ready to be used (access not granted)





# Real-world data for improving health care

Innovación y experiencia al servicio del paciente



- Admissions & Discharges
- Emergency room
- Surgery
- Morbidities
- Health functional areas
  - Diabetes
  - Prostate cancer
  - Breast cancer
  - Inflammatory bowel disease
  - Rheumatic disease
  - ...

- Chronic patients with complex multimorbidity
- Hospital resource utilisation
- 30-day readmissions
- One-year mortality

- Diabetes Mellitus Type II
- Diabetes complications
  - Cardiopathies
  - Neuropathies
  - Retinopathies



Still there are important information needs

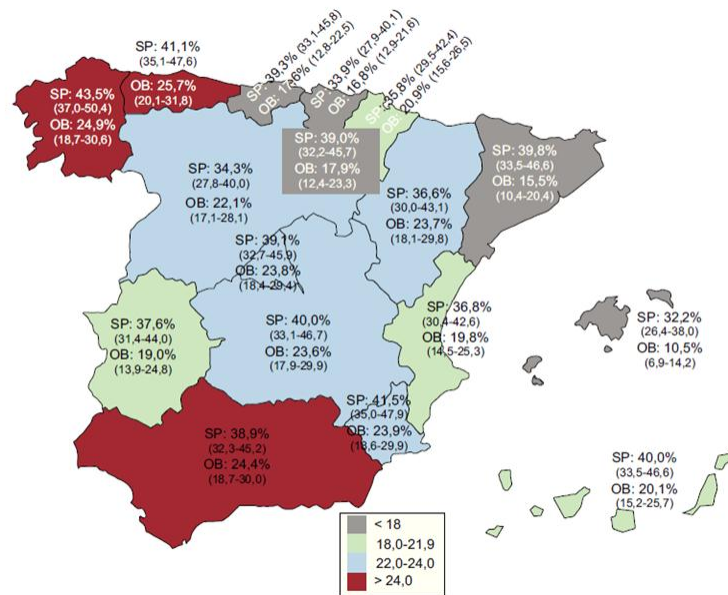
Innovación y experiencia al servicio del paciente

## What we need?

- ▶ Dietary habits
- ▶ Physical activity habits
- ▶ Sleeping habits
- ▶ Sedentariness habits
- ▶ Compliance with medication
- ▶ Monitoring with remote sensors
- ▶ Monitoring with smartphone apps
- ▶ Socio-demographic information
- ▶ Evidence-based decisions

## OBESEITY AND OVERWEIGHT

- ▶ Estimated prevalence in the Spanish adult population is
  - ▶ 39.3% overweight
  - ▶ 22.8% obesity



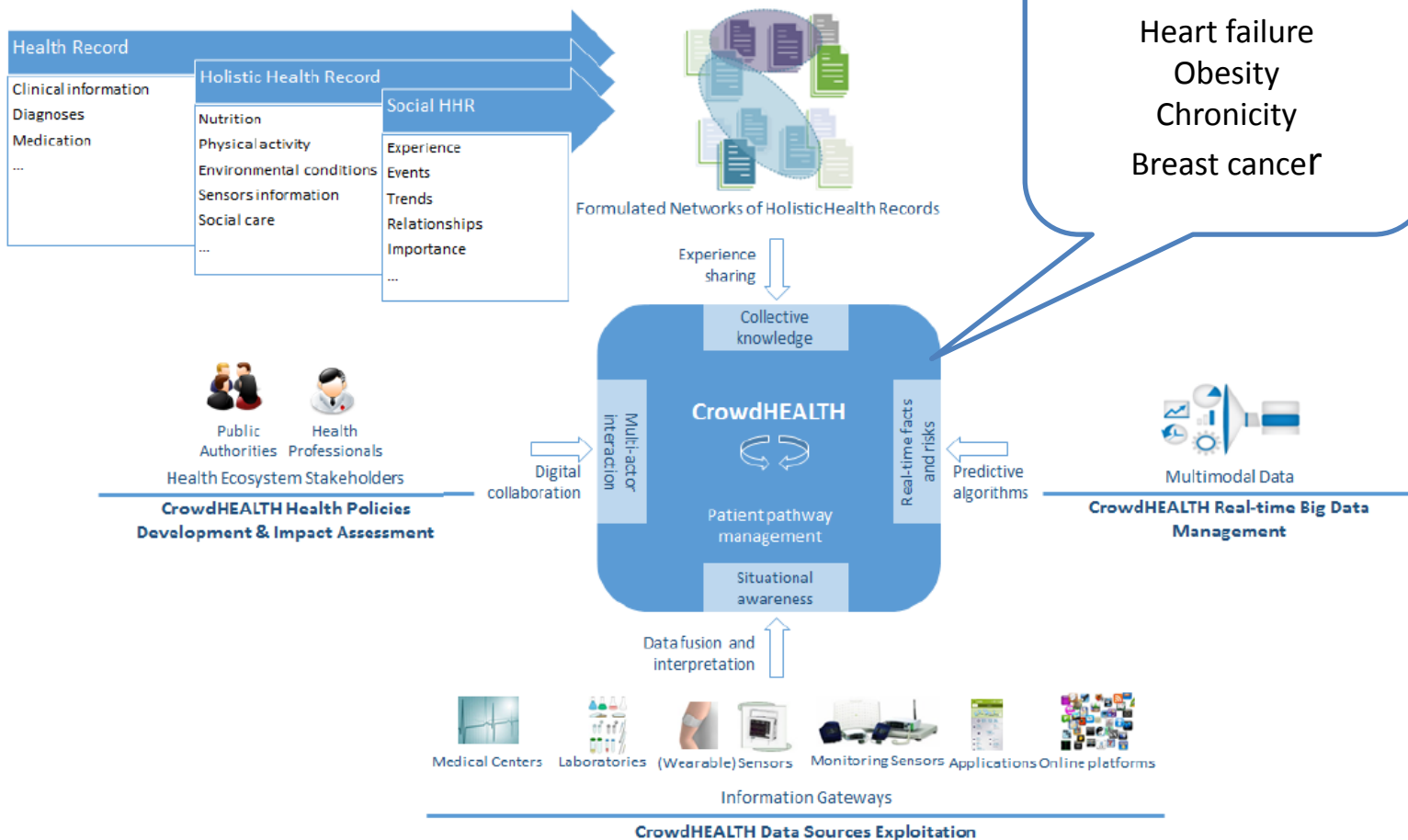


# EU CrowdHEALTH Project

Innovación y experiencia al servicio del paciente



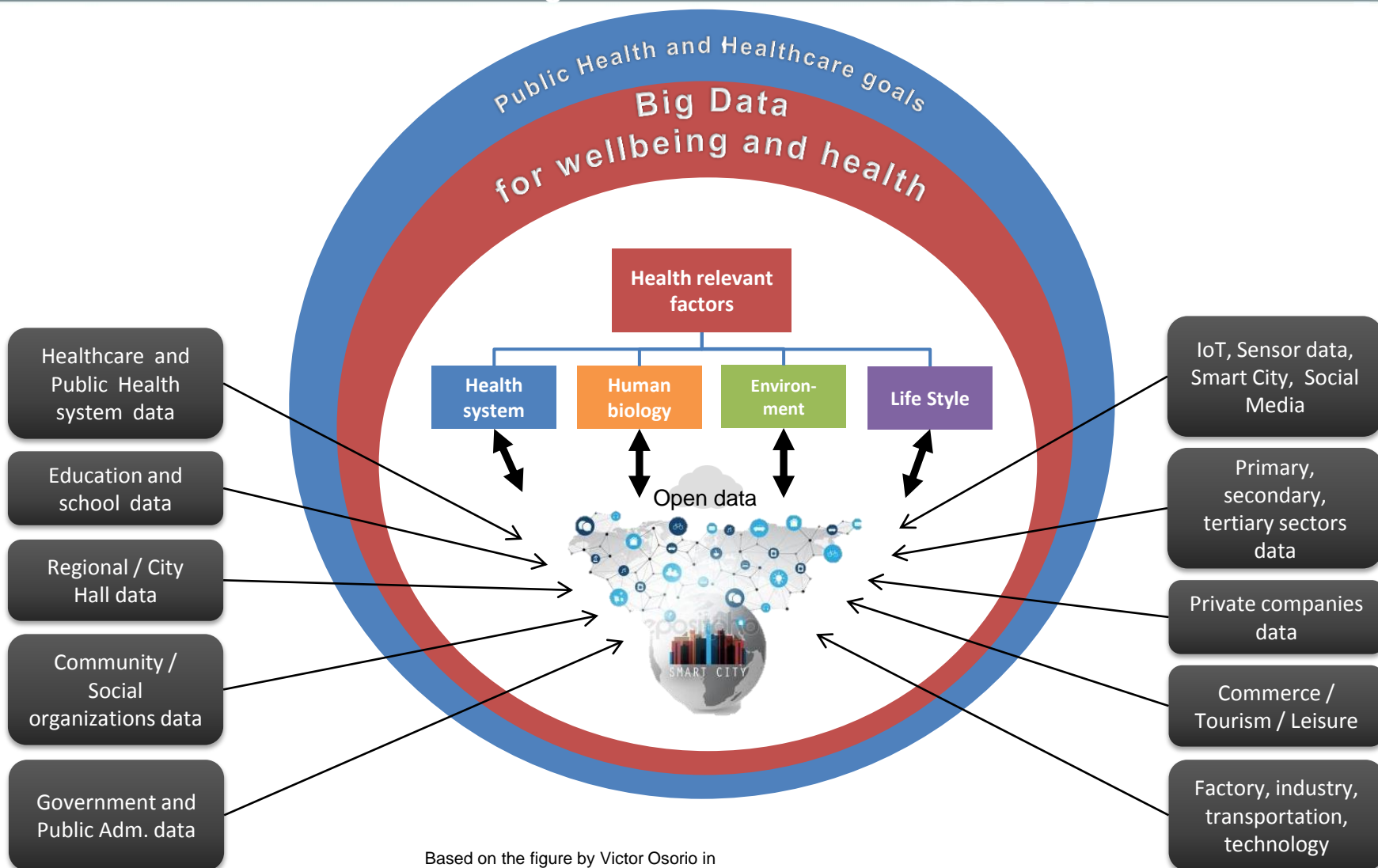
## CrowdHEALTH





## An overview of wishful thinking

Innovación y experiencia al servicio del paciente







GENERALITAT  
VALENCIANA

CONSELLERIA DE SANITAT UNIVERSAL  
I SALUT PÚBLICA

LaFe

Hospital  
Universitari  
i Politècnic



Innovación y experiencia al servicio del paciente

# Thanks for your attention!

Contact:

Dr. Salvador Tortajada Velert

Unidad Conjunta de Investigación en TIC Aplicadas a  
Reingeniería de Procesos Socio-Sanitarios La Fe (eRPSS)

Mail: [tortajada\\_sal@gva.es](mailto:tortajada_sal@gva.es)

Tel: (+34)961245717 Ext:411692



Instituto de  
Investigación  
Sanitaria LaFe



CrowdHEALTH