

BUNDES BREITBAND BÜRO



Coordination of broadband development in Germany

- Federal structure of support for broadband development
- 1st level: municipal and regional experts
 - Supporting local actions
 - first contact for local residents and companies
 - Development of new forms of cooperation with residents and companies
- 2nd level: competence centres of the single states /regions
 - Supporting 1st level, local residents and companies,
 - Coordinating regional activities
 - Implementation of regional broadband strategies
- 3rd level: Federal Government
 - Designing national strategies
 - Coordinating and implementing European strategies



Network of support and development

- Network of all public supporting levels
- All levels cooperate and coordinate with
 - Chambers of Commerce (national, regional and local branches)
 - German Cities Council
 - German County Association
 - German Association of Towns and Municipalities
- Federal Broadband Office
 - Coordination of network activities
 - Support federal government

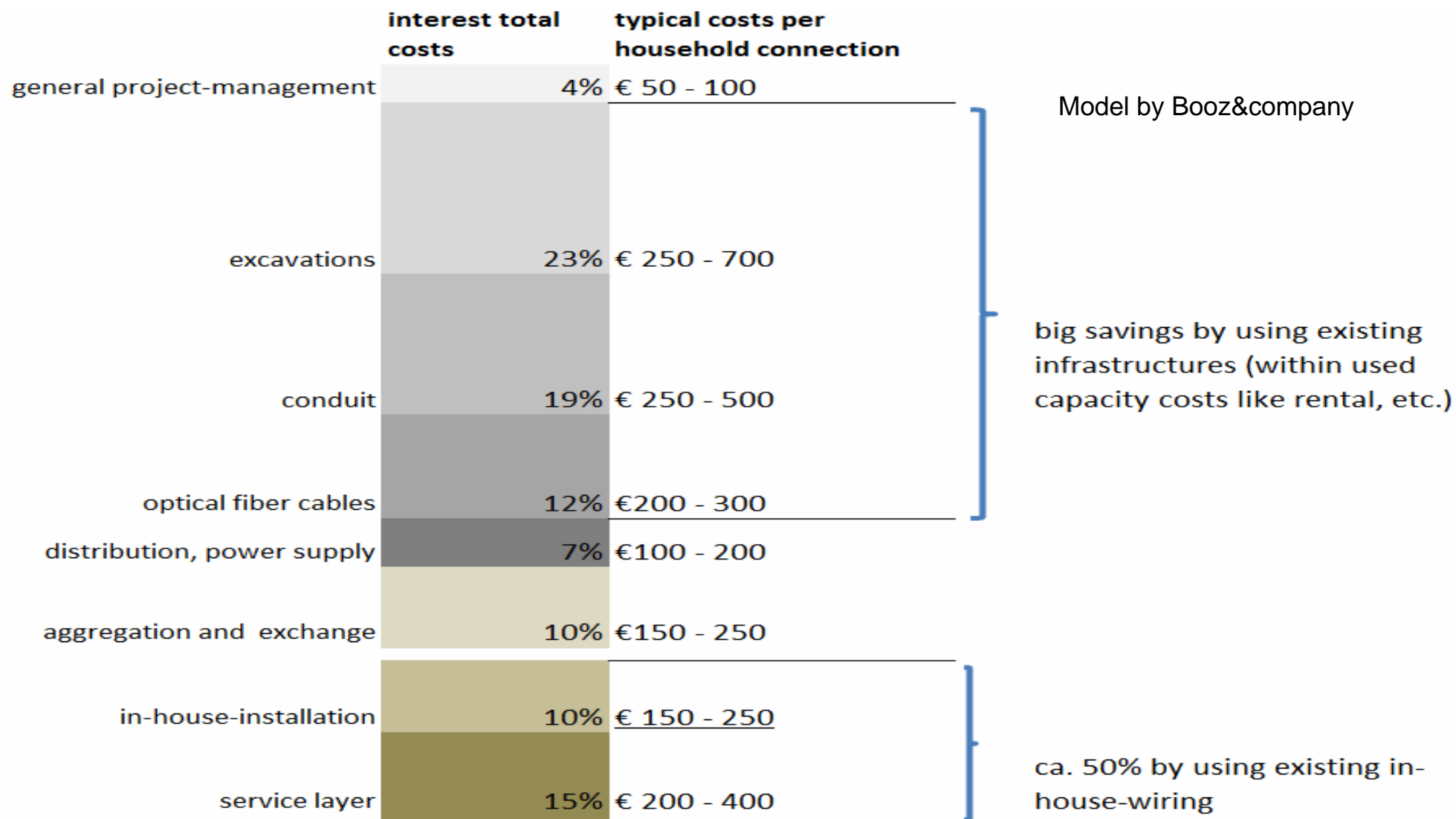


Four pillars of the National Broadband Strategy

- 1) **Using synergies for building up infrastructure** through opening and using of existing public and private facilities.
- 2) **Supporting politics for using frequencies**, e.g. through using of digital dividend (790 bis 862 MHz) for broadband development in rural areas.
- 3) **Growth friendly regulation**, giving strength to incentives for investments and aspects of planning security and supporting cooperative market approaches.
- 4) **Measures for financial support** to connect municipalities that are not provided with broadband via the market (white spots)

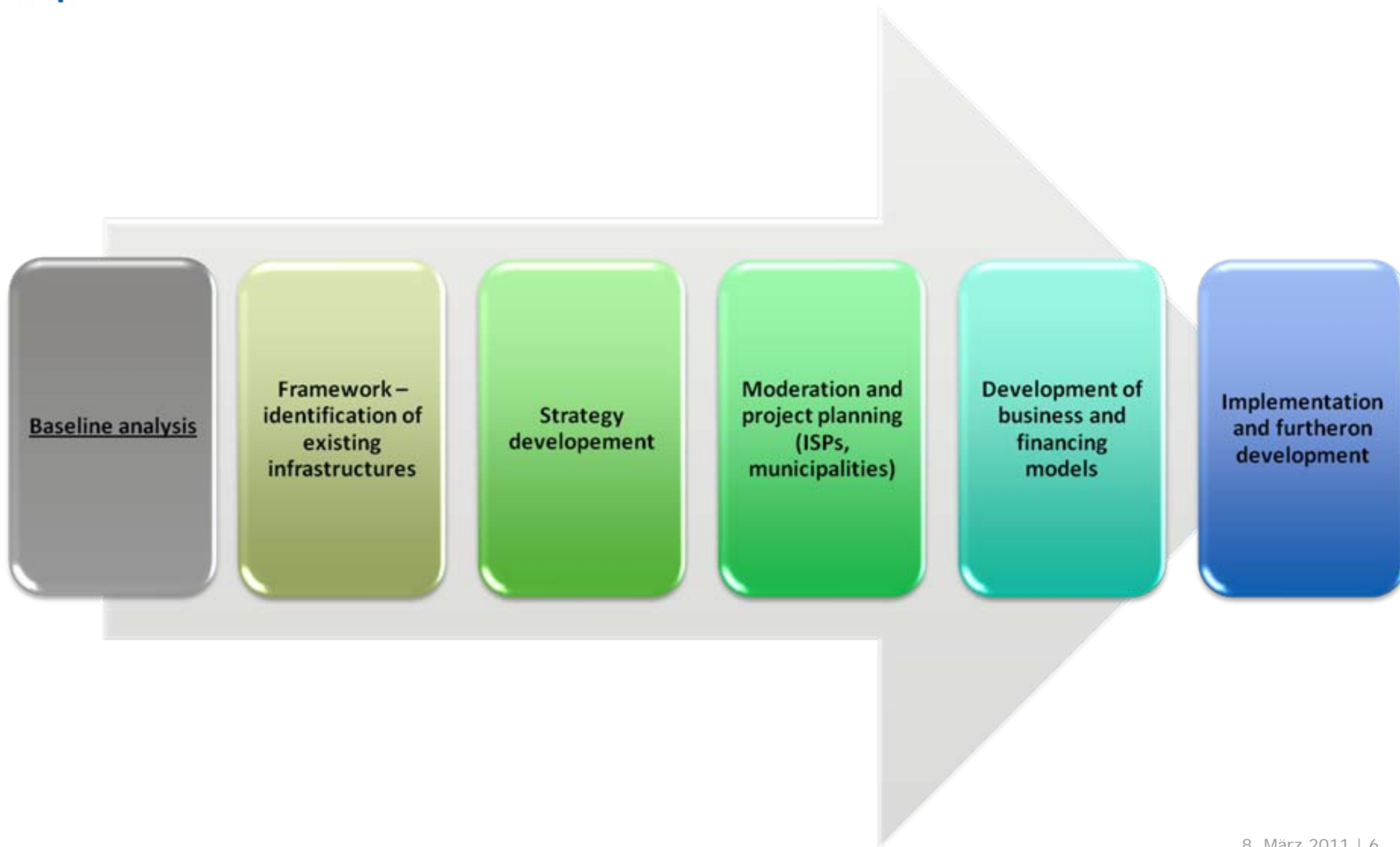


Pillar 1 – synergies through using existing infrastructures



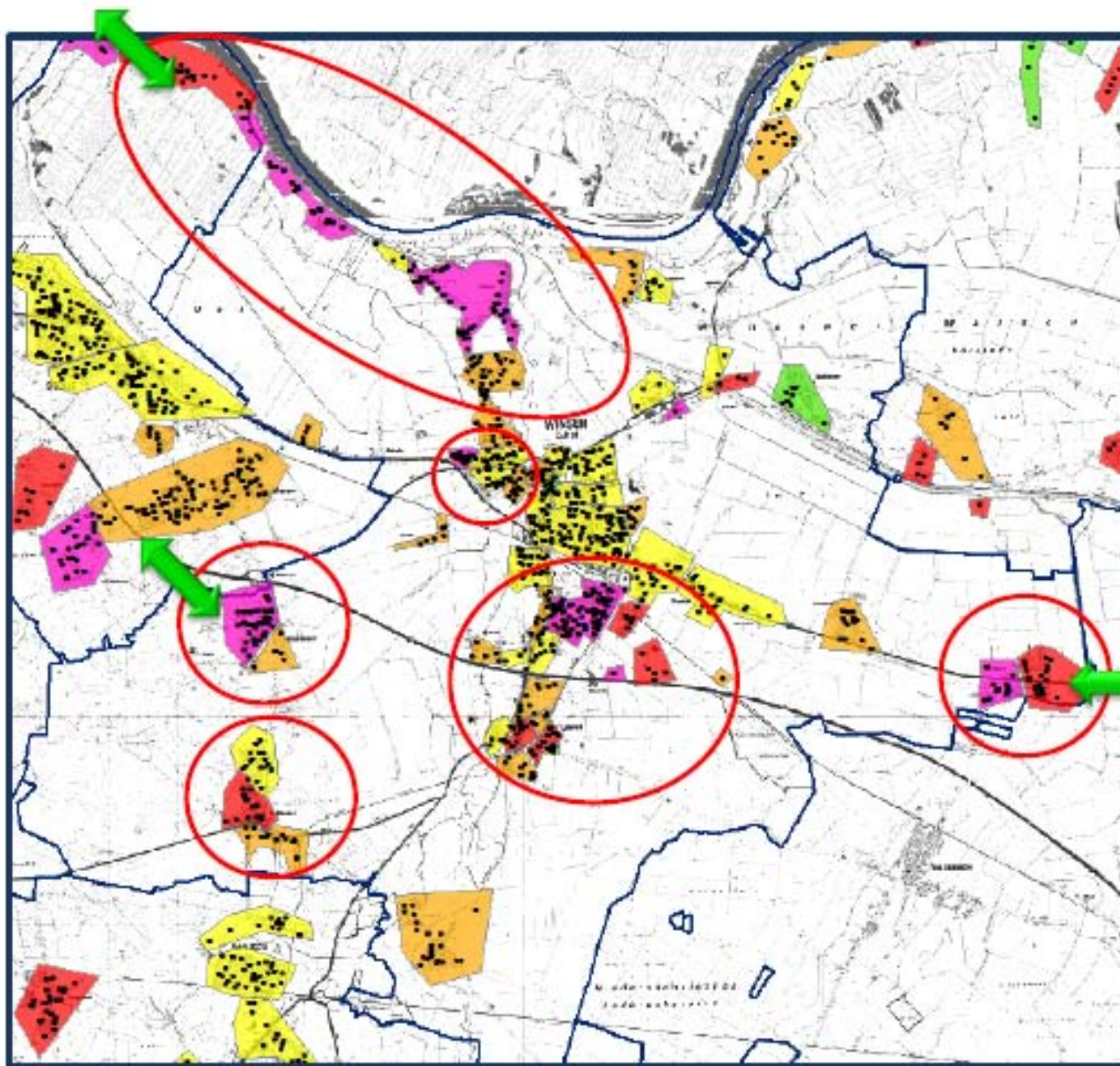


Cost effectiveness as a step by step approach





Clustering



Haushalte	4
Beteiligung	2
Bedarf	3
Versorgung	2





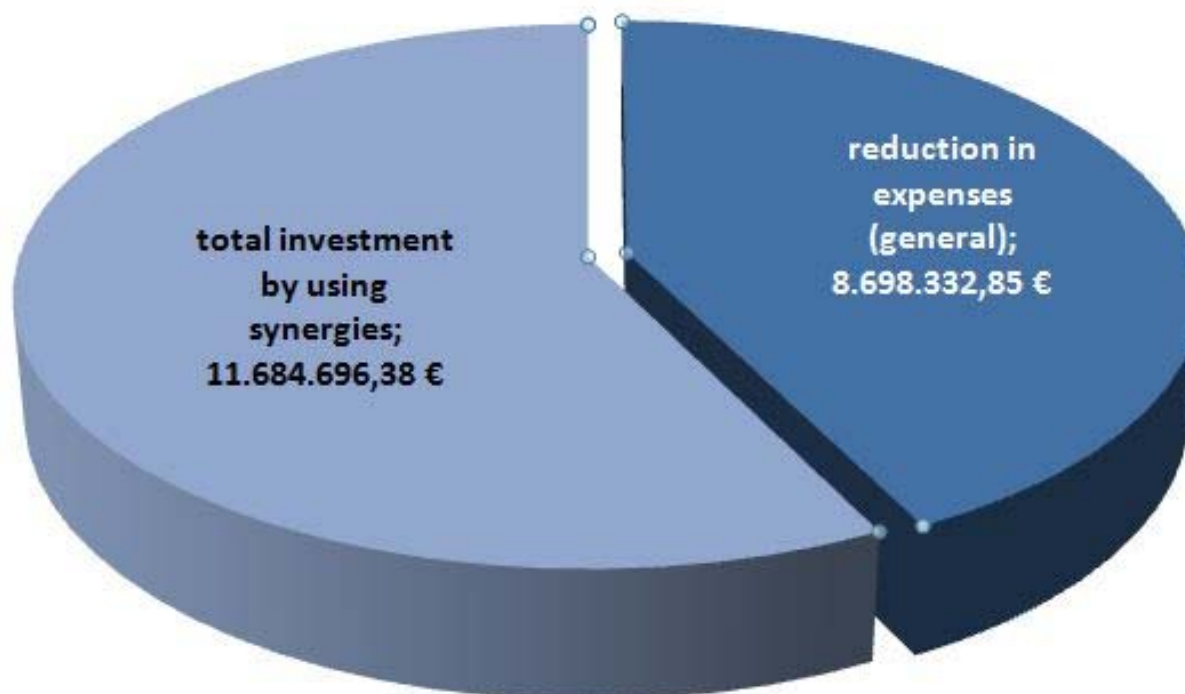
Pillar 1 – synergies through using existing infrastructures

- model projects initiated by the Federal Ministry of Economics and Technology
- main criteria for the status of Model Project is using existing synergies to the largest possible extent
- e.g. using sewage pipes, existing tubes or combining with other interventions like building projects

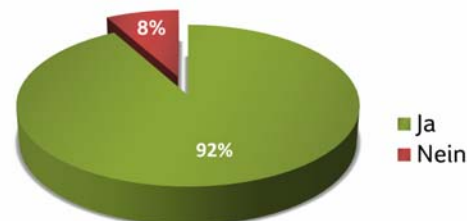


Pillar 1 – synergies through using existing infrastructures

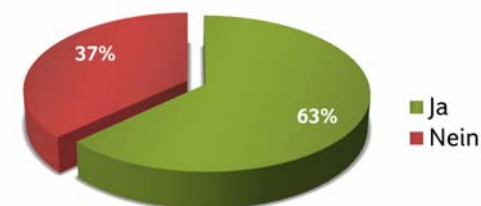
➔ reducing the costs app. 43%



Durchführung einer Bedarfsanalyse



Durchführung einer Machbarkeitsstudie



Thank you for your attention!



Tim Brauckmüller

Haus der Kommunikation
Oranienburger Straße 18
10178 Berlin

Telefon: 030 60989900

Fax: 030 609899099

E-Mail: t.brauckmueller@breitbandbuero.de

www.zukunft-breitband.de

