

# Multi Knowledge

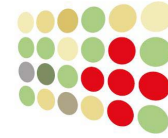
## Creating New Knowledge In Networks of Medical Research



Information Society  
Technologies

**Instrument: STREP**

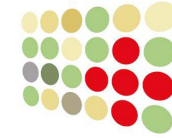
**Project Identifier: FP6-IST-2004-027106**



Multi Knowledge

## The project:

The MULTI-KNOWLEDGE Project aims to integrate different biomedical information from heterogeneous sources (clinical, laboratory and metabolic) with data on gene and protein expression provided by new high-throughput technologies in a system committed to cardiovascular risk profiling



Multi Knowledge

### **The consortium:**

- **CENTRO DI CULTURA SCIENTIFICA „A. VOLTA“ (Italy)**
  - **AGILENT TECHNOLOGIES, ISRAEL Ltd. (Israel)**
  - **UNIVERSITÀ DEGLI STUDI DI PARMA (Italy)**
    - **KING'S COLLEGE LONDON (UK)**
- **PCS PROFESSIONAL CLINICAL SOFTWARE GMBH (Austria)**
  - **S.A.T.A. - S.R.L. (Italy)**
- **INFORMATION MANAGEMENT GROUP LTD (UK)**
- **DATAMED A.E. HEALTHCARE INTEGRATOR (Greece)**
- **THE STANFORD LELAND JUNIOR UNIVERSITY (Usa)**

### **Timetable:**

**from 01/01/06 to 31/03/2008**

**Total cost: € 3.776.148,00**

**EC funding: € 2.440.00,00**

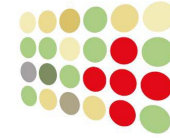


Information Society  
Technologies

**Instrument: STREP**

**Project Identifier: FP6-2004-IST-027106**

Classical risk factors (high cholesterol, high blood pressure, smoking, etc) can explain **only 50%** cases of CV events

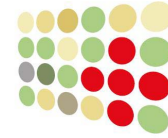


Multi Knowledge

There arises the need to get:

- a better prediction of the CV events
- a better prevention strategy

Therefore, **MULTI-KNOWLEDGE** will create a predictive algorithm combining heterogeneous data (clinical, laboratory, metabolic, gene and protein expression data) to identify the presence of early signs of vessel wall atherosclerotic disease



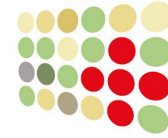
Multi Knowledge

## Scientific-medical objectives:

- To investigate the impact of CV risk factors on systemic inflammation using gene expression profiling
- To integrate clinical and molecular data to predict the presence of early signs of atherosclerosis

## Technical aims:

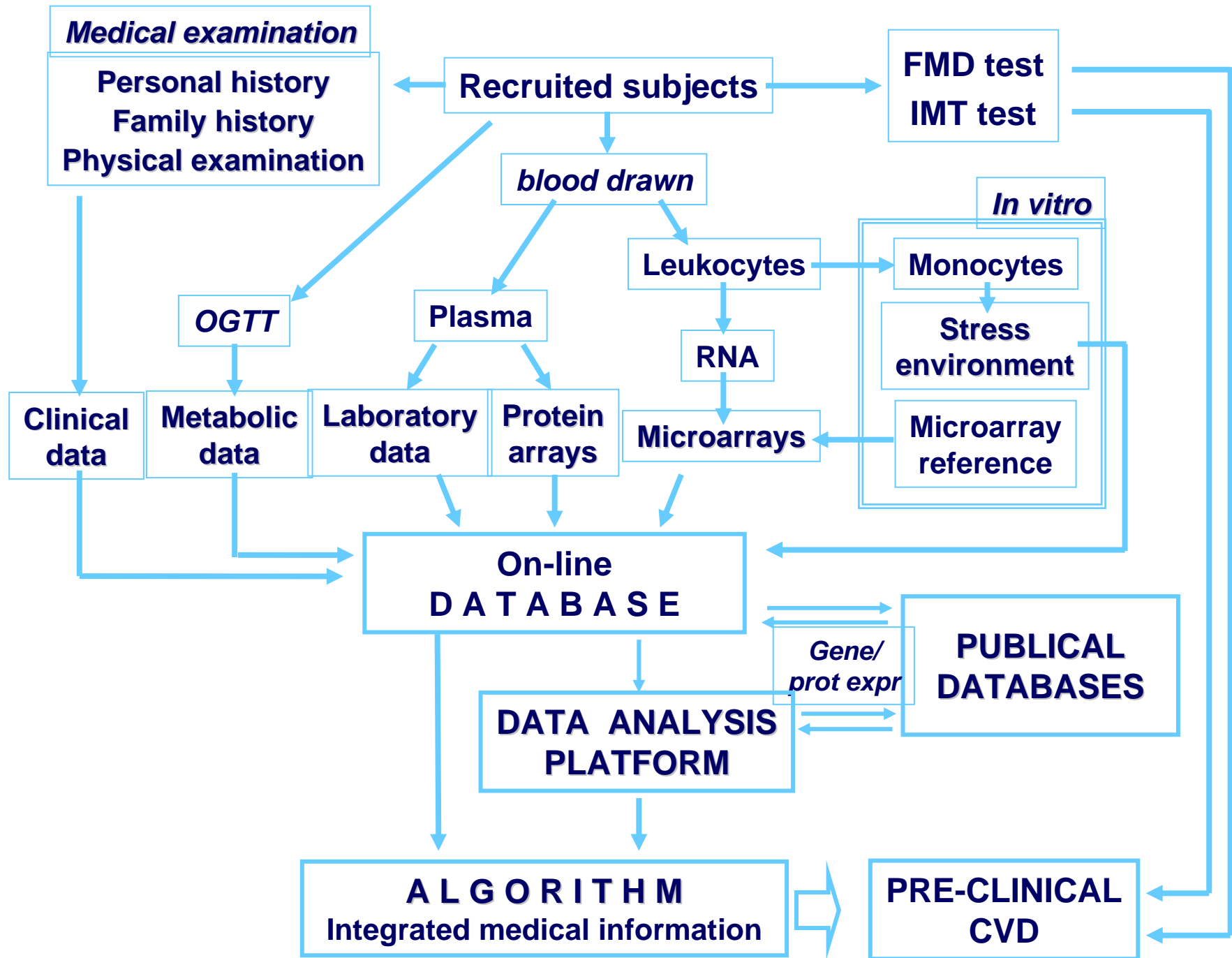
- To create an efficient workflow environment for multi-national multi-professional research consortia aiming at cooperatively mining, modeling, visualizing biomedical and clinical data under a single common perspective

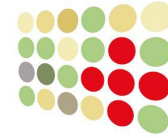


Multi Knowledge

## THE WORKPLAN:

- Phase A: Evaluation of needs and data integration
- Phase B: Mining of Integrated Data
- Phase C: Process Modeling
- Phase D: Evaluation and Assessment





Multi Knowledge

## EXPECTED RESULTS AND IMPACTS:

- Strategic impacts on the health care ICT market
- Strategic impact on the EU healthcare systems
- Strategic impact on social communities
- Strategic impact on scientific research