

# Introduction to Living Labs related project presentations

Living Labs Information Event  
January 2009

Per Blixt, Head of Unit F4  
New Infrastructure Paradigms and Experimental Facilities  
European Commission - DG Information Society and Media  
[per.blixt@ec.europa.eu](mailto:per.blixt@ec.europa.eu)



European Commission  
Information Society and Media

"The views expressed in this presentation are those of the author and do not necessarily reflect the views of the European Commission"

# Living Lab related projects

**LABORANOVA**

Collaboration Environment for Strategic Innovation

**ECOSPACE**

eProfessional Collaboration Space

**COSPACES**

Innovative Collaborative Work Environments for Individuals and Teams in Design and Engineering

**C@R**  
Collaboration @Rural

A collaborative platform for living and working in rural areas

**WEARIT @WORK**

Empowering the mobile worker by wearable computing

**CO-LLABS** - Community Based Living Labs to Enhance SMEs Innovation in Europe

**CORELABS** – Co-creative Living Labs

**CLOCK** - Challenges of Collaborative Working Environment

**OpenFutures** – Future Centers as Collaborative Working Environments



## First Living Labs related achievements from the FP6 and CIP project portfolio

A pool of **tools, methodologies and showcases of technologies** is created by IPs, and used by LLs, to promote user-driven open innovation methodologies

Several IPs have developed an **interoperability framework** for collaboration technologies

Coordination and Support Actions, and Thematic Network, together with Integrated Projects, have been instrumental in the launch of the **European Network of Living Labs**



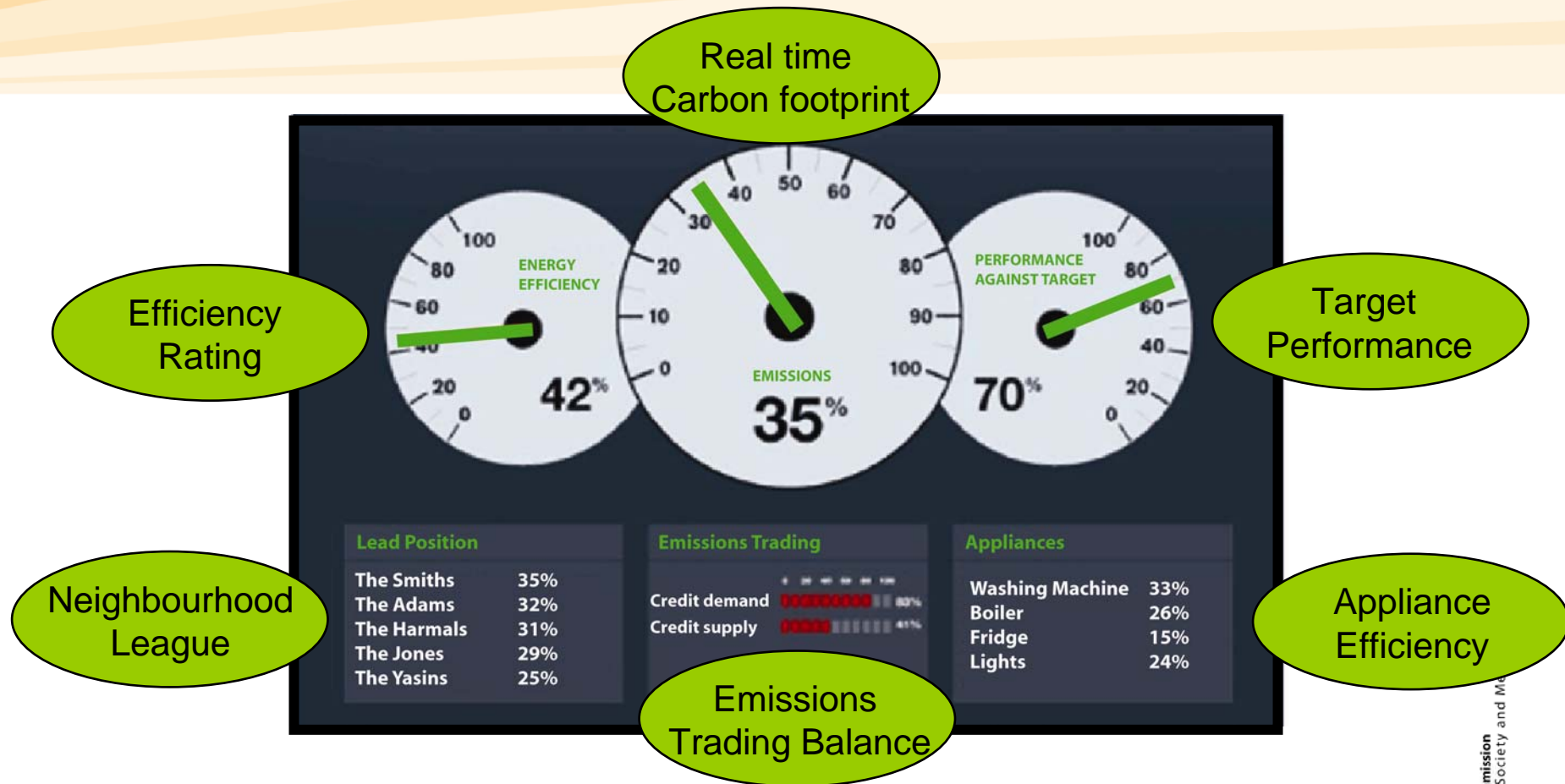
## Living Labs related project example: DEHEMS Digital Home Energy Management System

- DEHEMS ICT RTD project, led by Manchester City Council, started on 1 June 2008, in the portfolio of the unit ICT for Sustainable Growth (INFSO H4), under FP7 6.3 - ICT for the environmental management and energy efficiency.
- DEHEMS Vision: DEHEMS will develop & implement a granular and scalable 'energy use performance model' giving real time individual & comparative information on household emissions and energy performance.
- This will inform wider actions by providing recommendations and choices to change customer behaviour and reduce climate change emissions.

(Atul Hatwal, Policy Advisor, DEHEMS; LL workshop, 1/7/2008; see also [www.dehems.eu](http://www.dehems.eu))



# DEHEMS Customer Visualisation



- Dashboard accessible via PC, Mobile Phone, PDA etc



# Role of Living Labs in DEHEMS

- Living Labs are the development methodology for DEHEMS
- Living Labs central to connecting design, development and operation of service around the user
- Key element is the role of the user at an individual and community level
- Practical connection for citizens between daily life and European activity
- Three Living Labs cycles over the course of the project
- Progressively develop with project focus evolving from basic operation of pilot system to successfully achieving behaviour change

