

Making the children
feel secure and
involved



The National Development Centre of Child Mental Health

Lars Hellgren
Leader of the UPP-centre



Key message nr 6

- **“In times of economic recession, allocation of resources tends to focus on physical health and treatment. Health services should have the capacity and means to also support the mental health of families and children especially in such situations, which are known to compromise family functioning.”**
- **Collaboration is a cornerstone now and always**

Background document text

- Services for children and families are often divided into health, social, educational and cultural sectors. Collaboration across sectors and between different personnel is often difficult as the sectors have their own organisational structures, financial responsibilities and action guidelines, resulting in different sectoral interests and ways of working. This also refers to specialised and community based health services in many countries. Sectorised services result in problems in service delivery and effectiveness from the point the child and family and tax cost effectiveness.

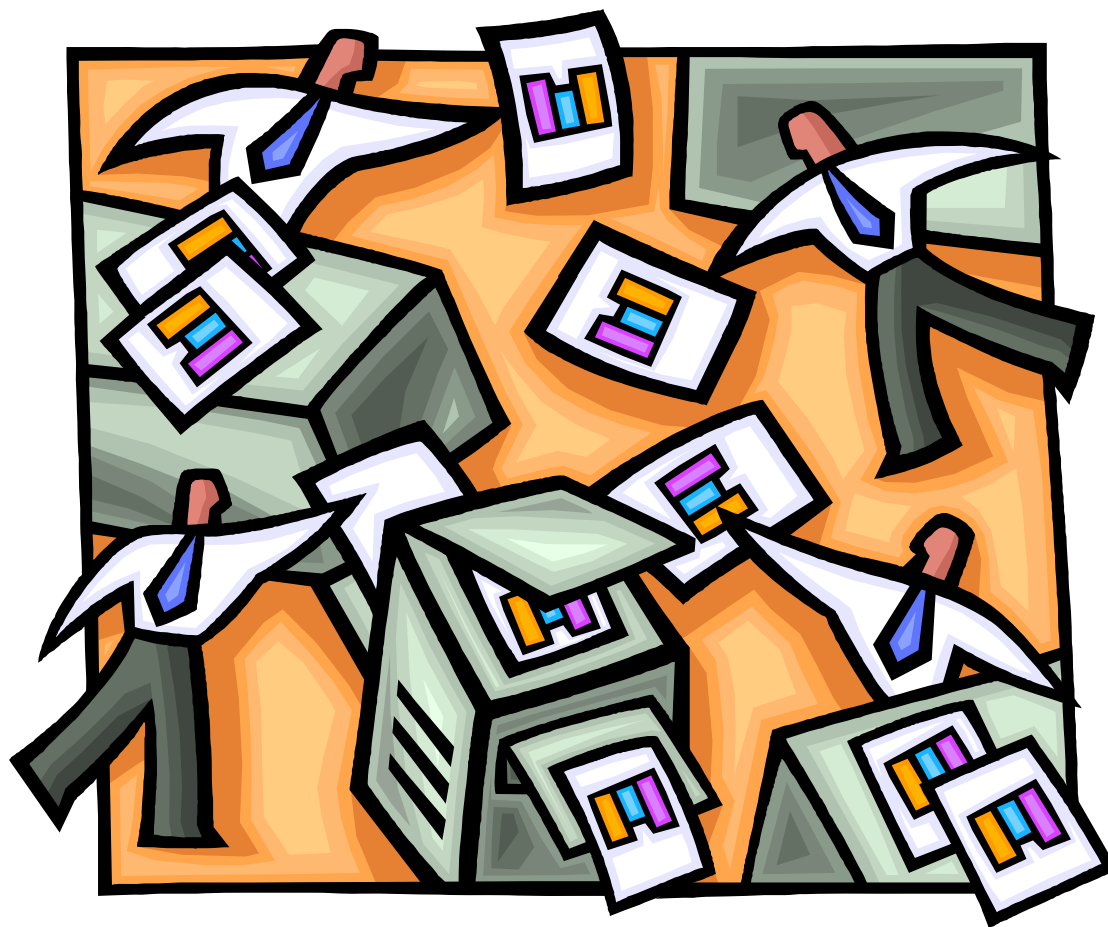


Attend the children!

Key message nr 9

- There is a **gap between what is known and what is really put into practice in terms of promoting child development and the prevention of mental problems through services**. Major advances have been made during the past fifteen years, although there is still a need of greater implementation of effective interventions.
- **When it comes to evidence and science:**

Which method to use?



Which reports will do?



Key message nr 5

- **Health services should respect the agency and expertise of children and parents** and enhance their capacities to take initiatives concerning their own health, family life and services, by involving children and parents in planning, decision-making and the implementation of preventive and promotion actions.
- “National strategy for a developed parental support. A profit for everybody.”

Compass for Action 3

- Universal, developmentally appropriate, community based and prevention and promotion oriented health services, starting with family planning and pregnancy extending through childhood years.
- This compass raises the question of universal or selective prevention and promotion:

National strategy for a
developed parental
support. A profit for
everybody



Essential action for the European Memberstates

- “We all need to support the development of high quality research, including cost effectiveness studies, on culturally sensitive preventative and promotion methods / interventions for child mental health”.

**Together we can make it?
Thank you!**



This paper was produced for a meeting organized by Health & Consumers DG and represents the views of its author on the subject. These views have not been adopted or in any way approved by the Commission and should not be relied upon as a statement of the Commission's or Health & Consumers DG's views. The European Commission does not guarantee the accuracy of the data included in this paper, nor does it accept responsibility for any use made thereof.