

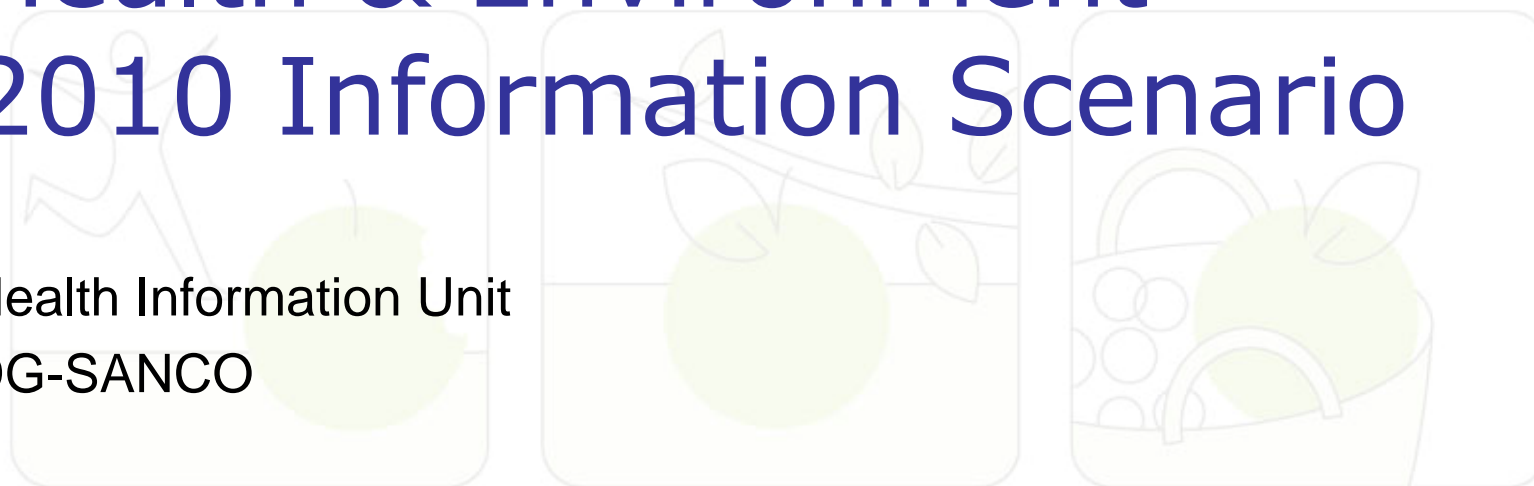
Health & Environment Working party

Health Information Unit
DG-SANCO



Health & Environment 2010 Information Scenario

Health Information Unit
DG-SANCO



EU Health Information

Provide quality, relevant, comparable and timely data, information and knowledge

Basis for public health decision-making at European, national and sub-national level

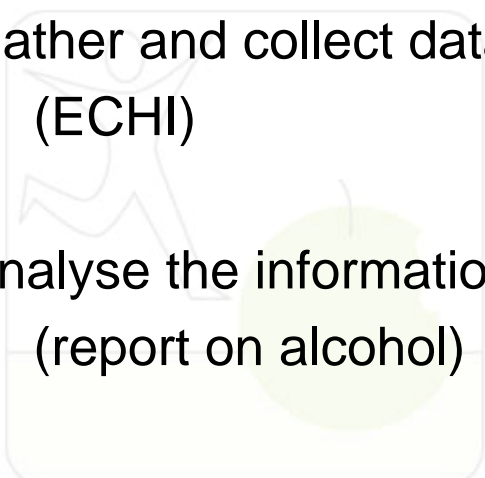
Choosing relevant set of data and indicators, up-to-date information technology and relevant statistical analysis

EU Health Information

Gather and collect data
(ECHI)

Analyse the information
(report on alcohol)

Disseminate knowledge for action
(Public Health Portal; eHealth ministerial conference)



Scenario 2010

The H&E IS will support Risk Assessment

characterization of the potential adverse health effects of human exposures to environmental hazards

based on consensus opinion health scientists, reviewing the scientific literature and resorting to established methodologies

Scenario 2010

Hazard identification

injuries or disease that may be produced by a stressor and conditions of exposure under which injury or disease is produced

inferring if effects observed in one setting will occur in another (e.g., whether substances found to be carcinogenic in animals have the same results in humans)

[comprehensive and updated database of scientific consensus, research and research gaps, per stressor]

Scenario 2010

Dose-response assessment

quantitative relationship between the amount of exposure to a stressor and the extent of injury or disease under different conditions of exposure

[comprehensive and updated database of scientific consensus, research and research gaps, per stressor]

Scenario 2010

Exposure assessment

nature and size of the population exposed to a substance and
magnitude and duration of their exposure

may concern anticipated exposure in the future

[comprehensive and updated database and mapping of population
and stressors, modeling]

Scenario 2010

The H&E IS will support Risk Management

which substances may be stored or transported in a certain way
to what extent a waste site must be cleaned up
what levels for air emissions and noise are allowed
how much of a chemical a company may discharge into a river
what level of contamination in drinking water is permitted
what level of exposure to EMF is acceptable

+ what policies are in place and which work best

Scenario 2010

The H&E IS will also rely on a network of monitoring stations spread over the EU

E&H studies that take into account potential socio-economic confounding factors are regularly launched

Specific subpopulations are surveyed (children)

The levels of pollutants in the human body are known for most cases and places; reference values for biomarkers have been collected

Scenario 2010

The methods allow for multiple exposure, even at very low levels, to be assessed

The relative contribution of sources is understood

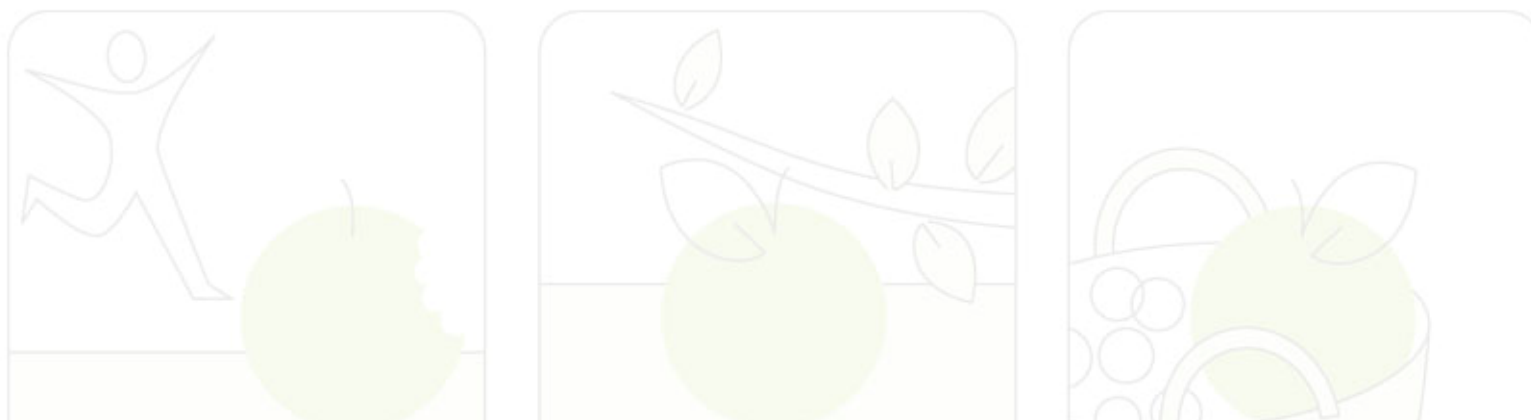
Efforts to reduce emissions can be tracked and evaluated

(what is the success in reducing the presence of pollutants in the environment and humans; how long does it take to take effect?)

Scenario 2010

MS authorities and citizens can straightforwardly access and compare data

A common E&H nomenclature and set of indicators, complete with methodological notes, has been agreed and is under use throughout the EU



What are the stressors

What are their sources

Where are they

How do they move about

What is the human exposure to them

How successful has policy been in controlling them

EMF 2010

A large cohort study on mobile phone use has been completed; a common international research agenda has been set

Relevant new applications (+7 T MRI, RFID, 5G) have been accompanied by adequate research; RF, IF, ELF, static fields are better understood

A complete map of EMF exposure is available for the RF and ELF range

A common approach towards risk communication has been taken and citizens routinely receive relevant information on the issue

PH Portal 2010

Citizens access on-line H&E information, at national and sub-national level

A single entry point exists for data hosted by Sanco, Env, EEA, JRC

An updated repository of national and regional H&E policies is kept

On-line, real-time monitoring of stressors is possible and pollution forecasts are available

Citizens can subscribe to services such as pollen or recreational water alerts

Planning 2010

A new highway ring is to be built around a city

Information concerning the population is available

The noise map of the road is calculated

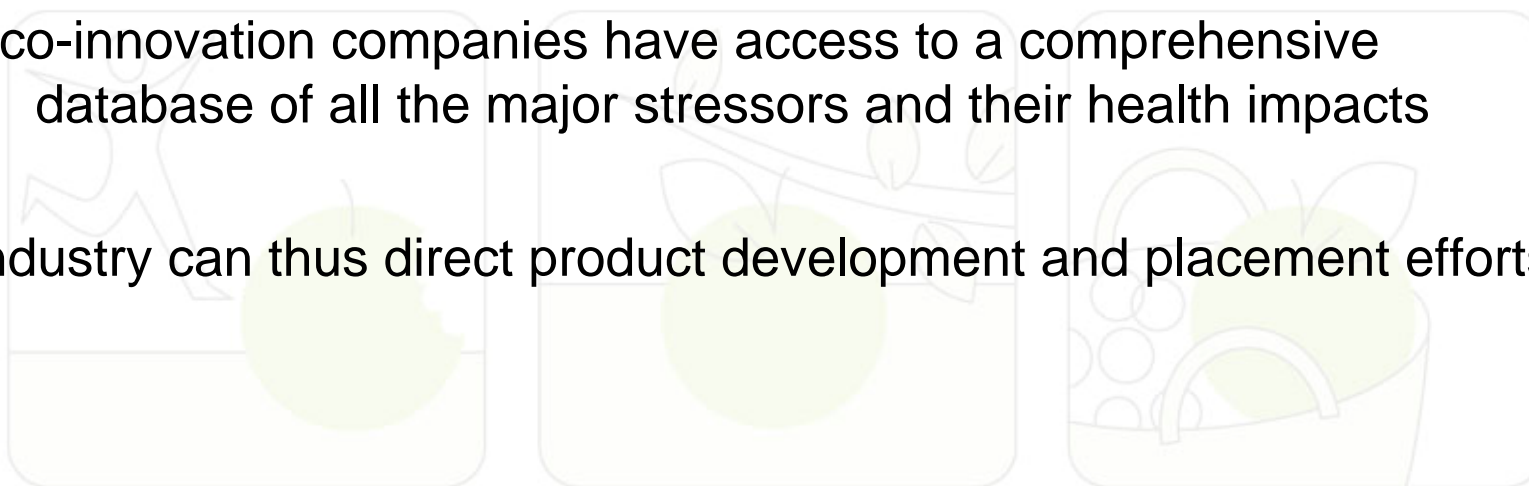
Health impact is calculated

Adequate containment measures are devised

Eco-innovation 2010

Eco-innovation companies have access to a comprehensive database of all the major stressors and their health impacts

Industry can thus direct product development and placement efforts



Health & Environment Working party

Health Information Unit
DG-SANCO



This paper was produced for a meeting organized by Health & Consumer Protection DG and represents the views of its author on the subject. These views have not been adopted or in any way approved by the Commission and should not be relied upon as a statement of the Commission's or Health & Consumer Protection DG's views. The European Commission does not guarantee the accuracy of the data included in this paper, nor does it accept responsibility for any use made thereof.