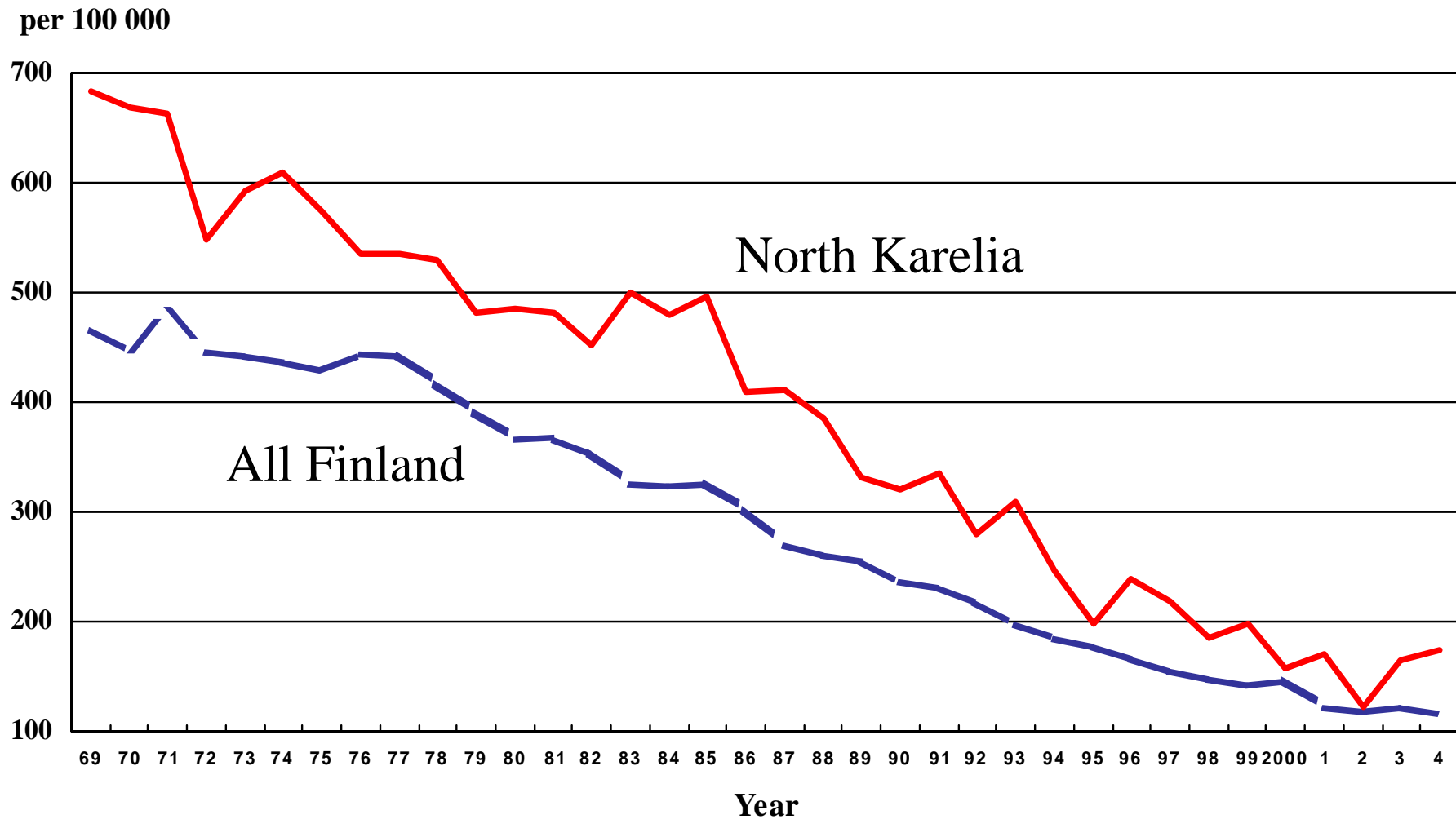


# CHD mortality in all Finland and in North Karelia 35-64 year old men



# CHD mortality in Finland 35-64 year old men and women

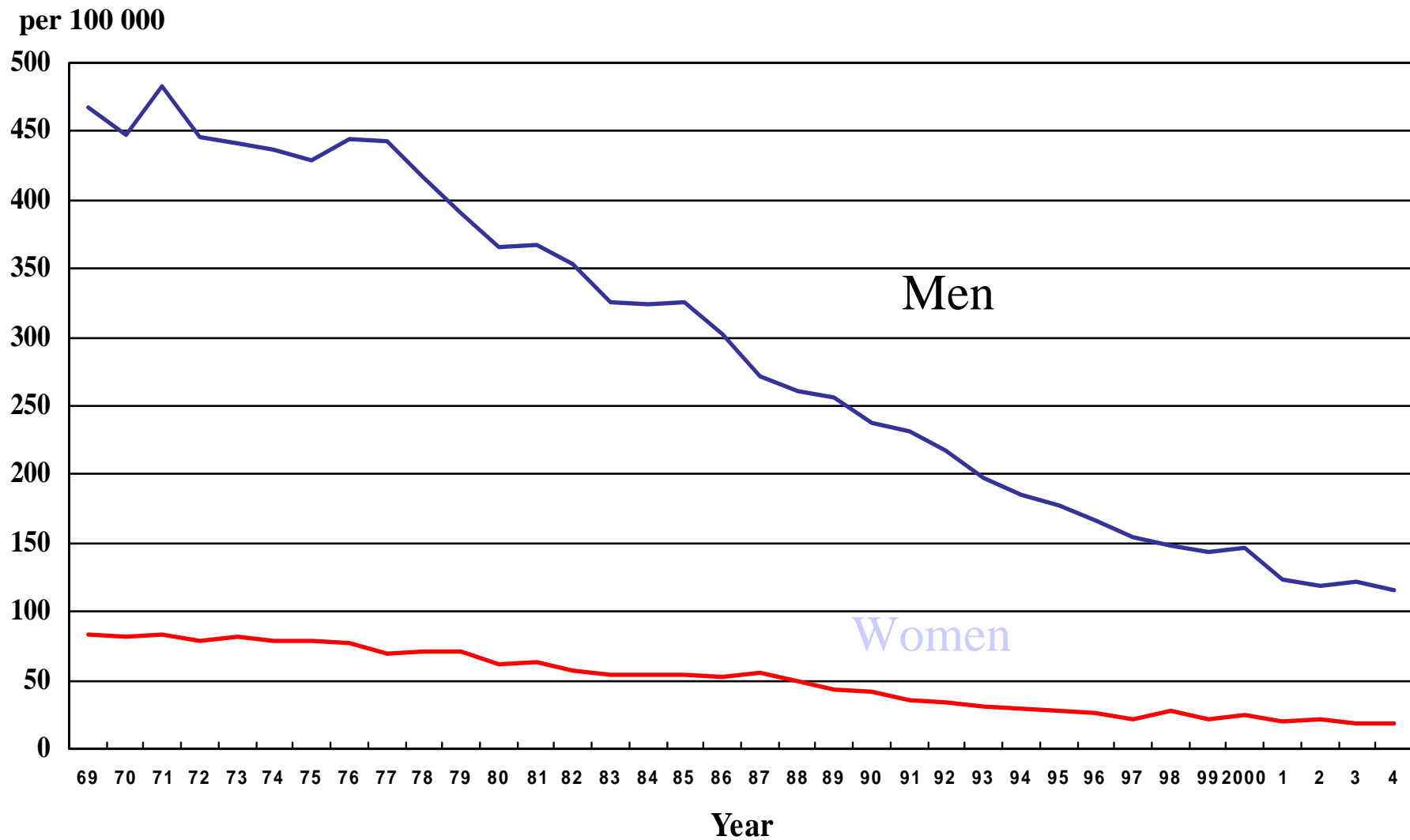
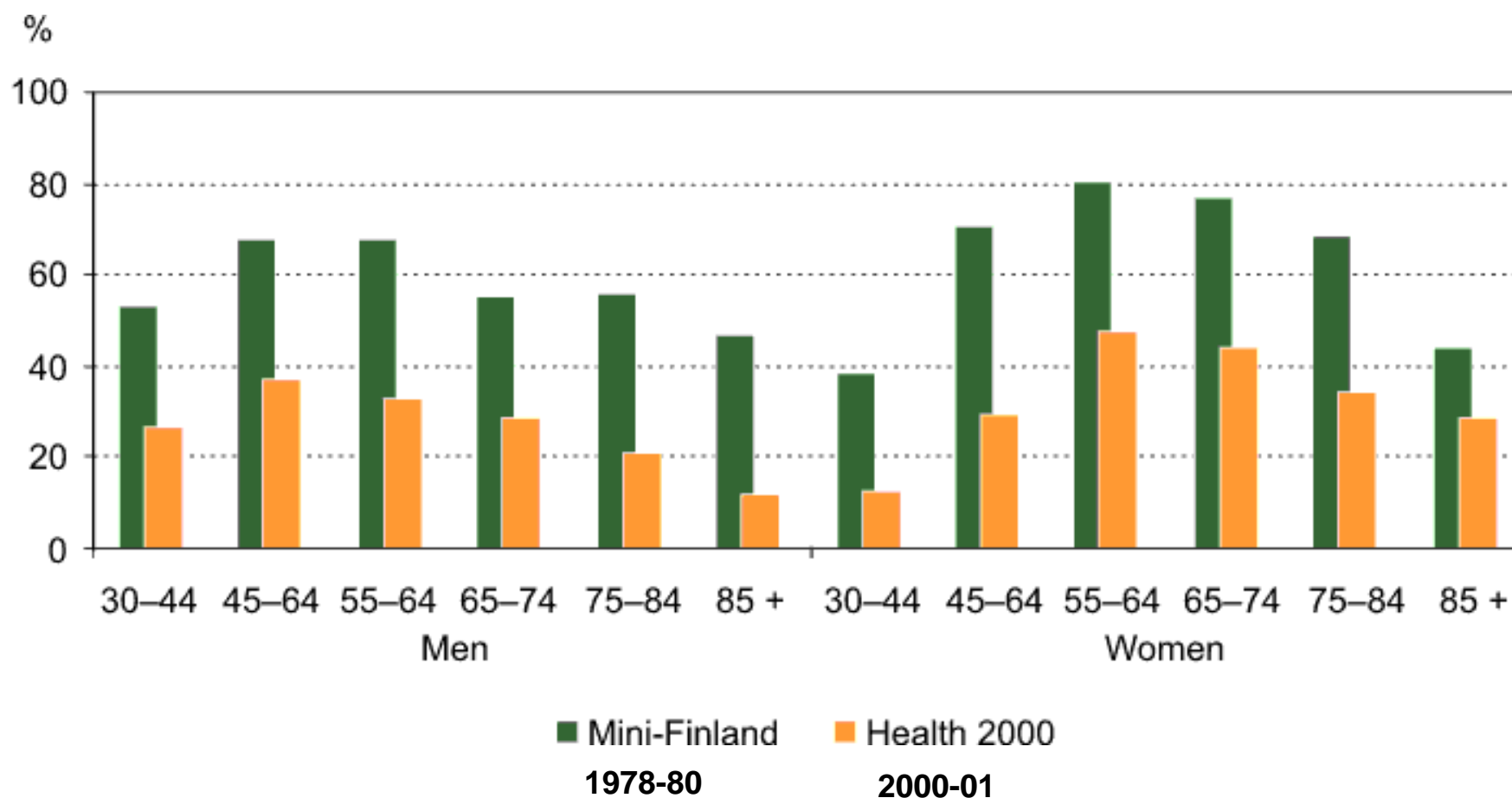
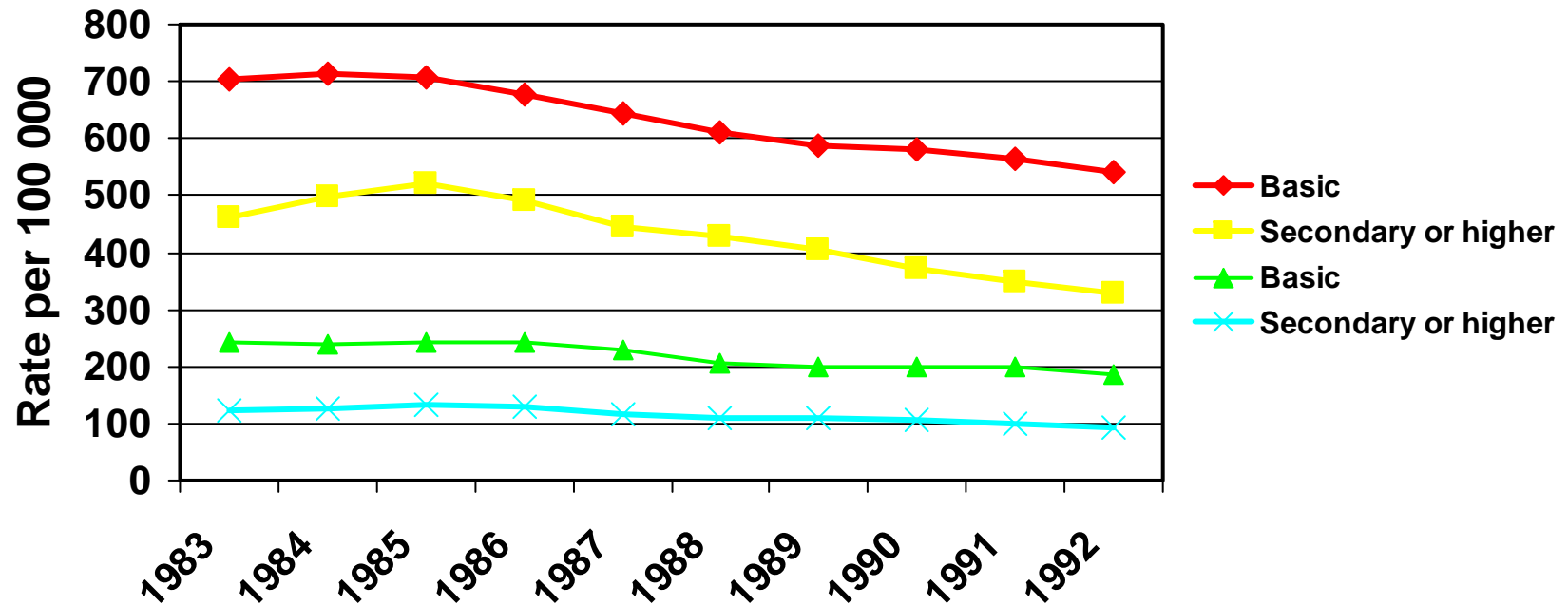


Figure 15.2. Prevalence of high serum cholesterol concentration ( $\geq 6.5$  mmol/l) in 1978-80 and 2000-01.



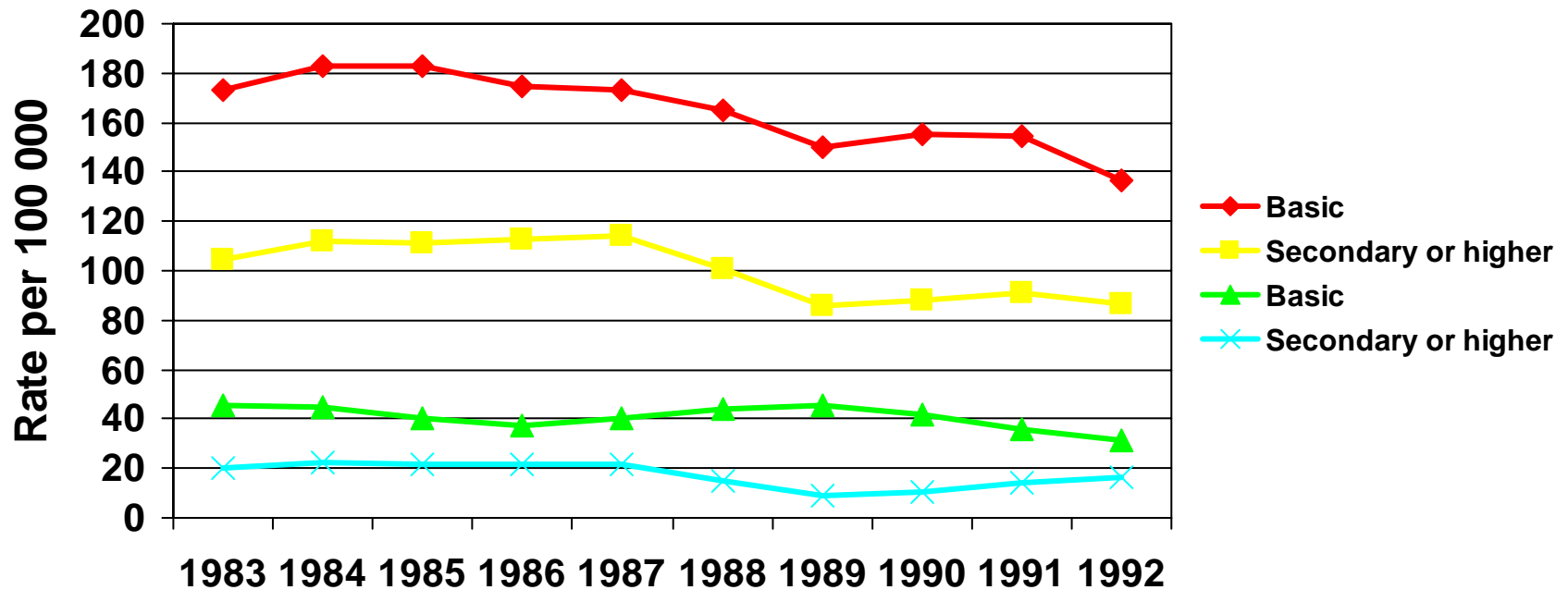
# Trends in Age-standardized Incidence and 28-day Mortality Rates by Education

## Men



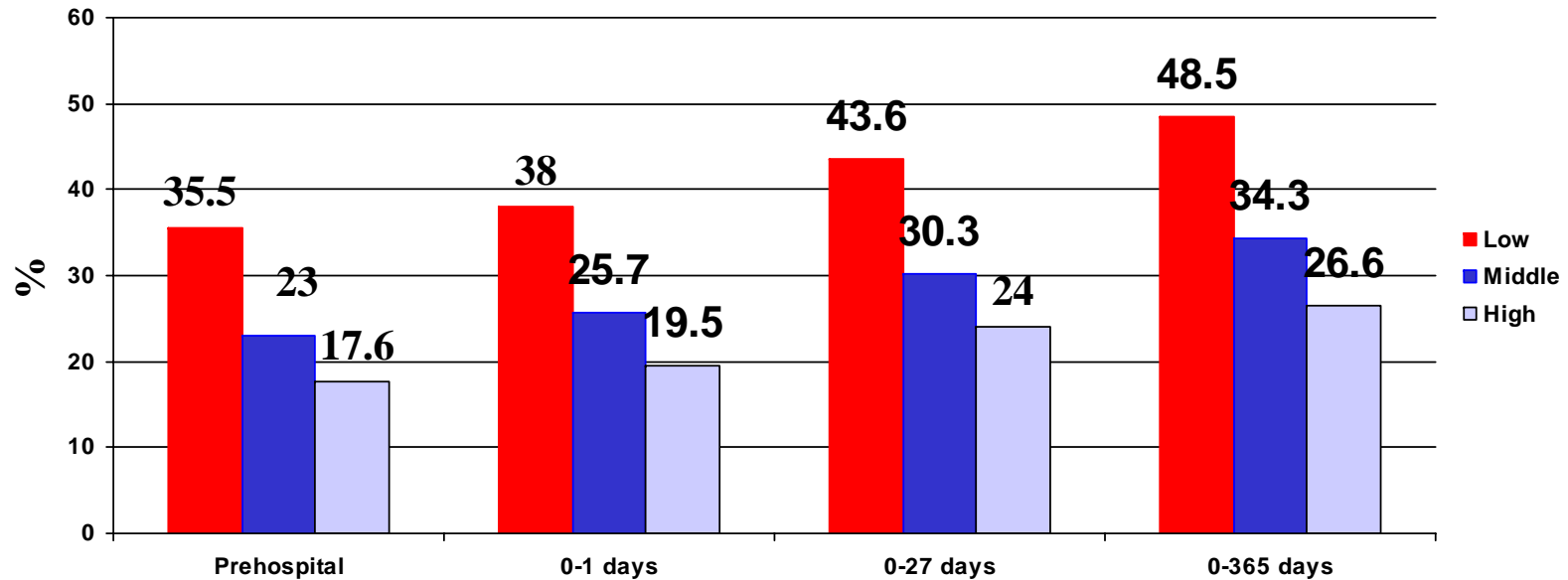
# Trends in Age-standardized Incidence and 28-day Mortality Rates by Education

## Women



# Case-Fatality of First MI Events by Income

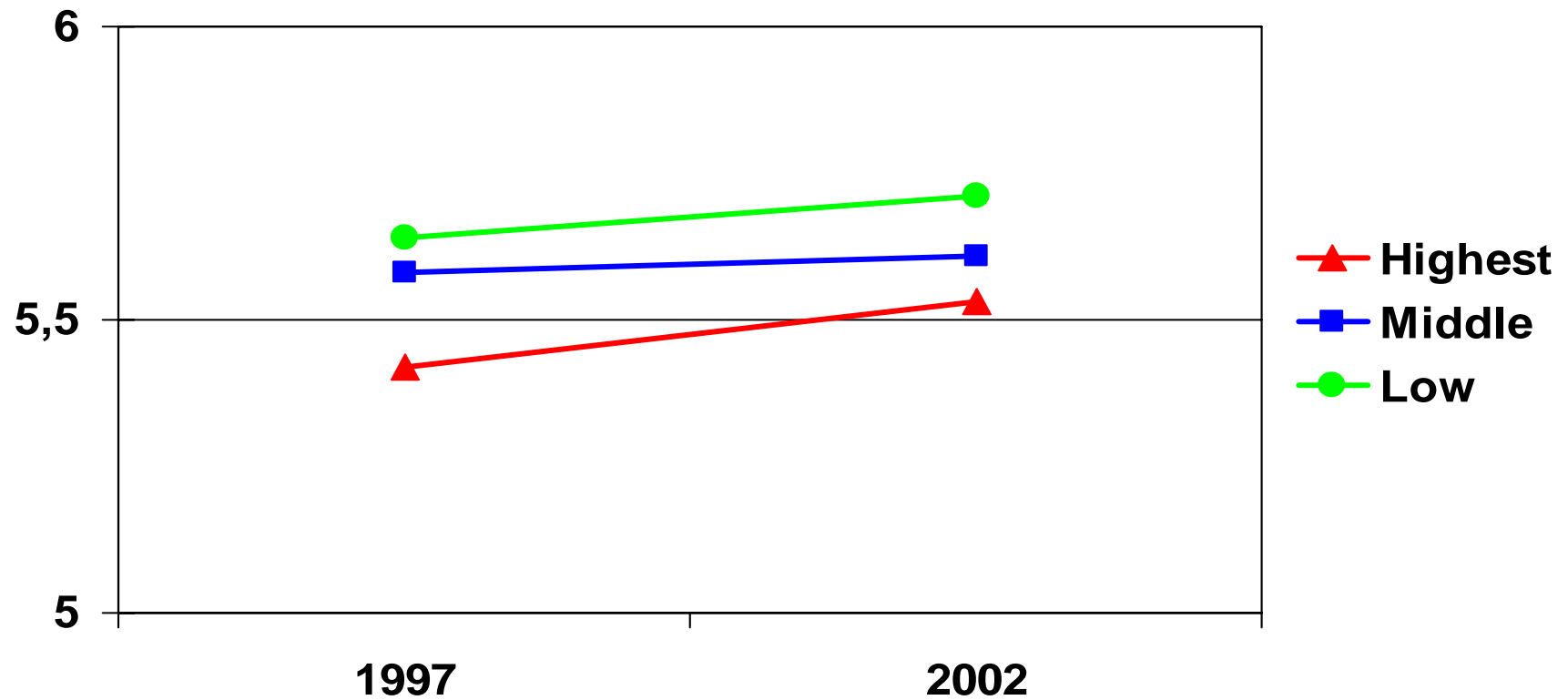
Men aged 35-64 years



# Population attributable risk

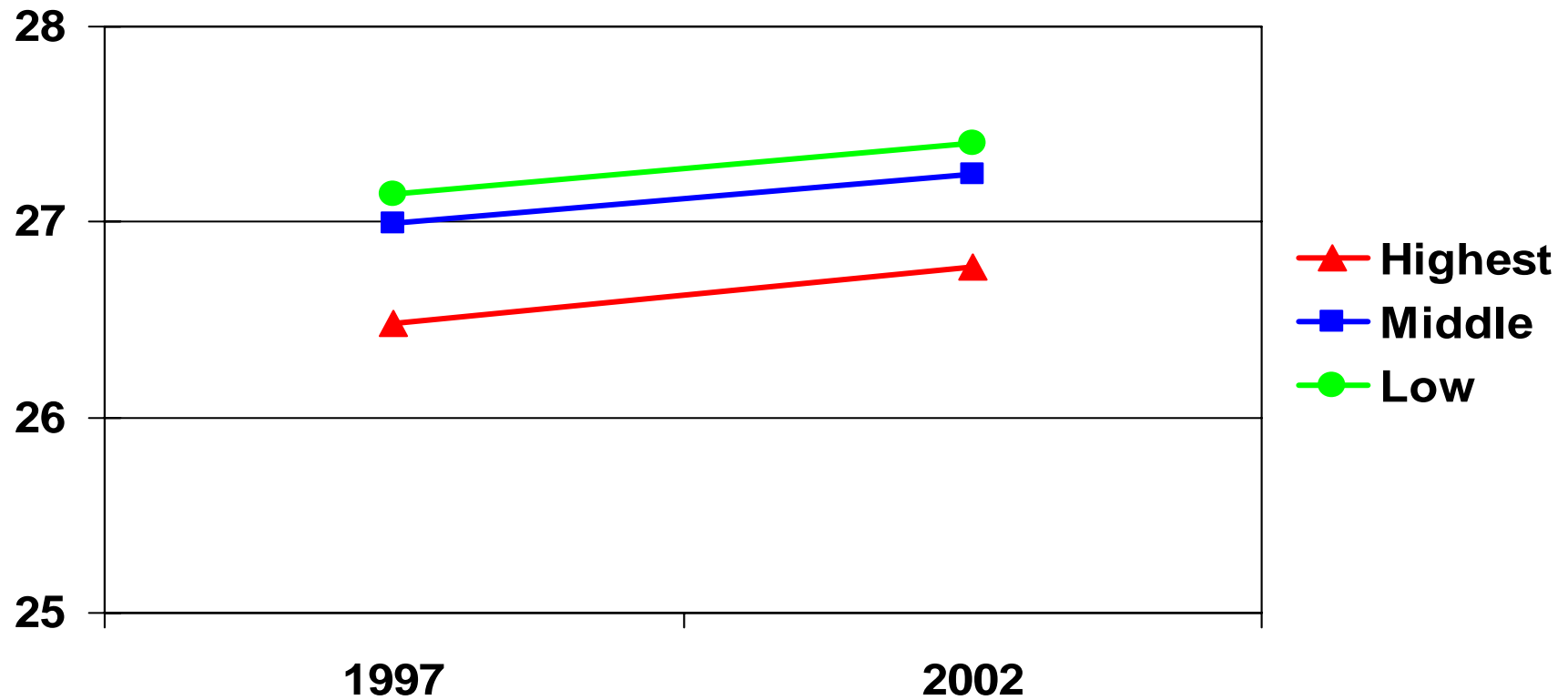
- associated with low or middle income group is 53% in comparison with high income group

# Serum total cholesterol according to education in 25-64 old men

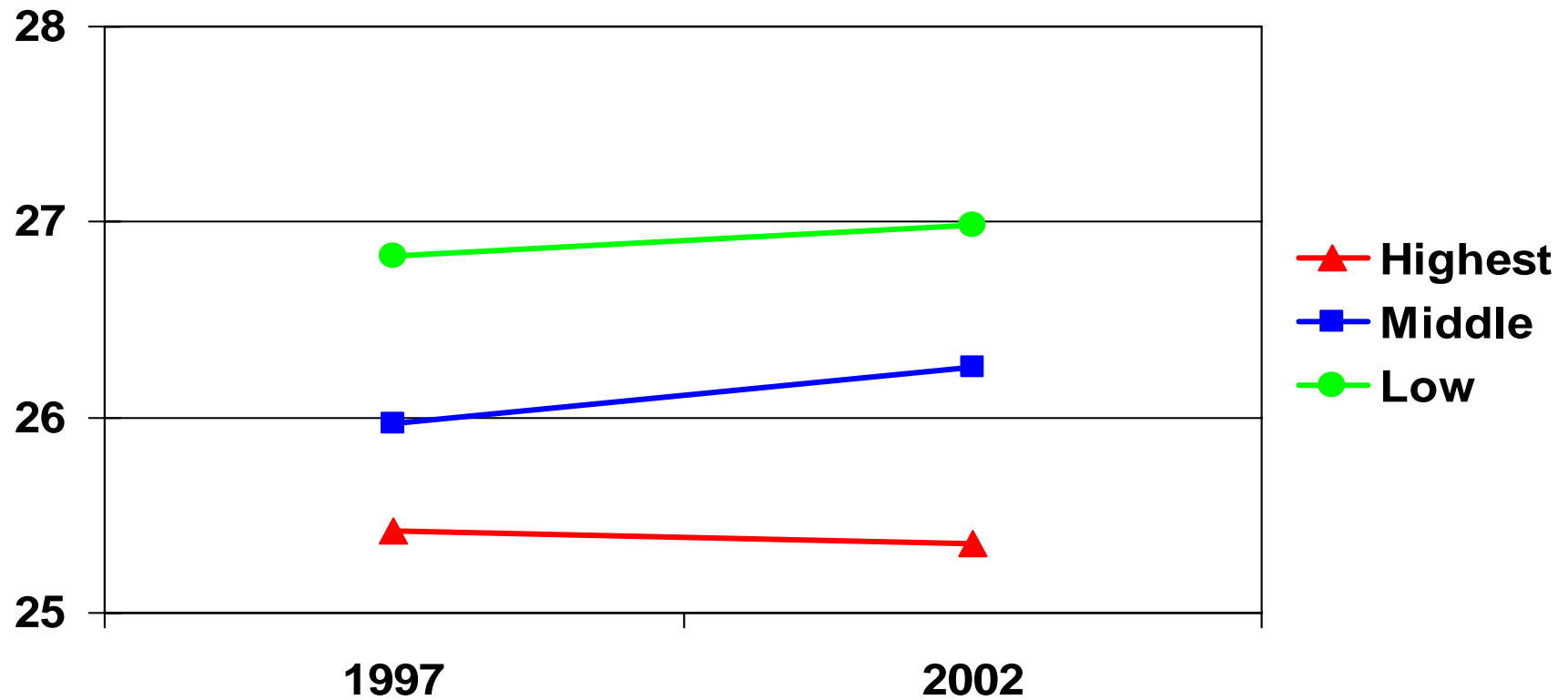




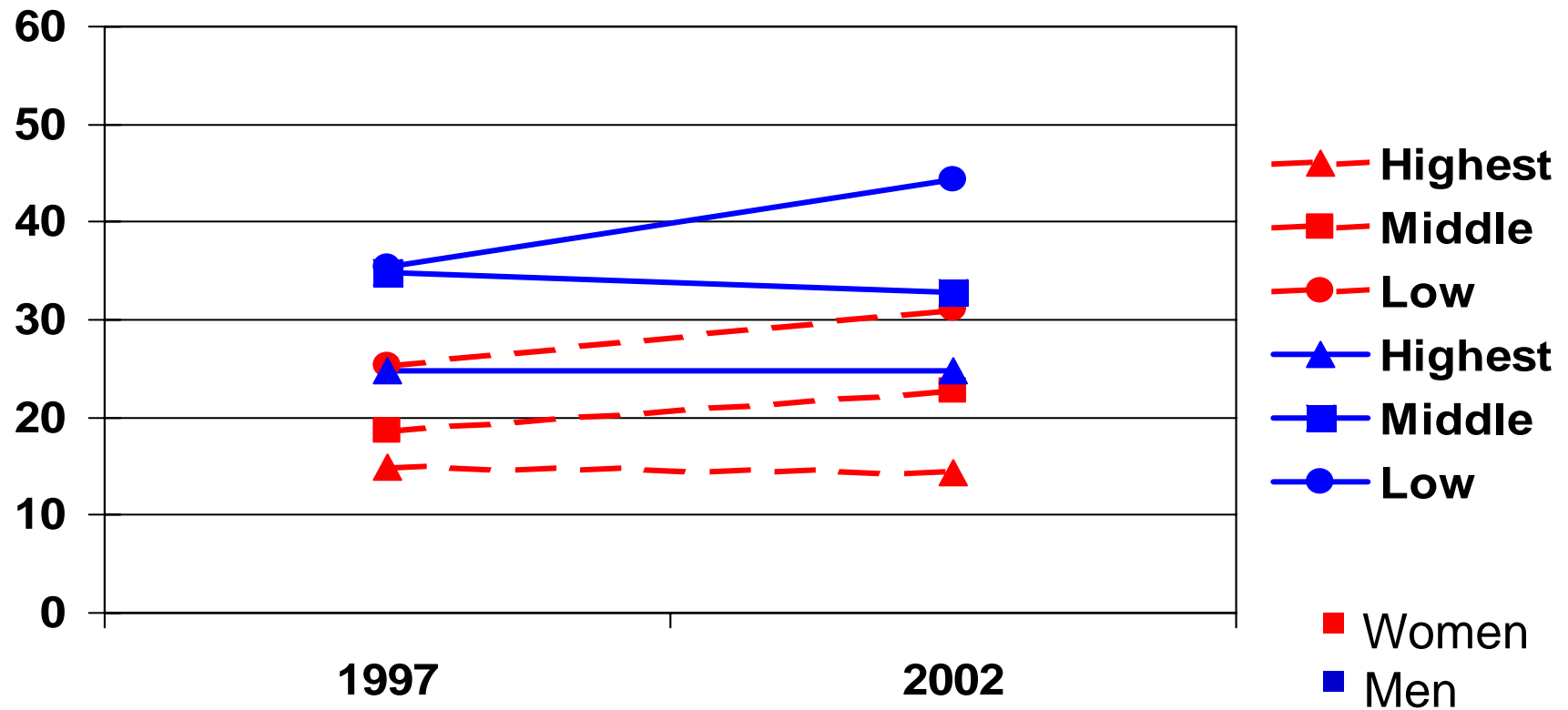
# Body mass index according to education in 25-64 old men



# Body mass index according to education in 25-64 old women



# Smoking according to education 25-64 years olds



**This paper was produced for a meeting organized by Health & Consumer Protection DG and represents the views of its author on the subject. These views have not been adopted or in any way approved by the Commission and should not be relied upon as a statement of the Commission's or Health & Consumer Protection DG's views. The European Commission does not guarantee the accuracy of the data included in this paper, nor does it accept responsibility for any use made thereof.**